

Quality Solid Brass Hardware & Bath Accessories



idh
by
St. Simons, Inc.

“The Special Finishes Specialist”©

TABLE OF CONTENT

Solid Brass Decorative Hardware and Bath Accessories

Section A	Flush Bolts, Dust Proof Strike	Page 3
Section B	Door Guards, Security Hardware, Heavy Duty Surface Bolts	Pages 4-7
Section C	Door Pulls	Page 8
Section D	Door Stops, Door Holders	Pages 8-12
Section E	Window Hardware	Pages 13-14
Section F	Hooks, Brackets	Pages 14-15
Section G	Cabinet Hardware	Page 16
Section H	Sliding Door Hardware	Page 17
Section I	Exterior & Front Door Hardware	Pages 18-20
Section J	Door Hinges, Finials, Cabinet Hinges	Pages 20-22
Section K	Ball Catches, Ball Latches	Page 23
Section L	Heavy Duty Wall Plates, Wall Plates	Page 24
Section M	Door Hardware Components	Page 25
Section N	Towel Shelves, Bath Accessories	Pages 25-27



FINISHES

“The Special Finishes Specialist”©

- 003/605 Polished Brass
- 004/606 Satin Brass
- 005/609 Antique Brass
- 014/618 Bright Nickel
- 015/619 Satin Nickel
- 15A/620 Antique Nickel
- 026/625 Polished Chrome
- 26D/626 Satin Chrome
- 10B/613 Oil-Rubbed Bronze
- 019/622 Matte Black
- 008 Bright Copper
- 08A Antique Copper
- 3NL: Polished Brass No Lacquer

Section A

Solid Brass Flush Bolts and Dust Proof Strikes

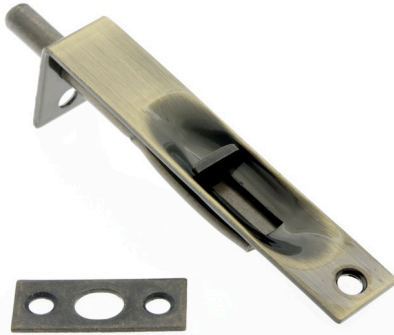


#11010
6" Flush Bolt
With Square End
 Face: $\frac{3}{4}$ " x 6"
 Throw: 1"
 Strike: $\frac{7}{8}$ x $1\frac{3}{4}$ "

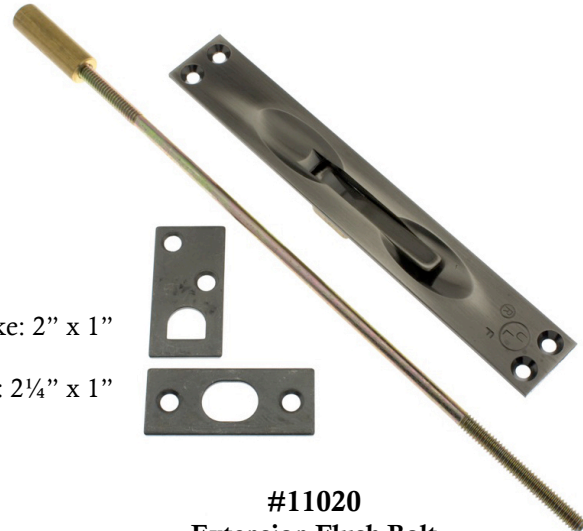


Strike
 included:
 $\frac{7}{8}$ " x $1\frac{3}{4}$ "

#11011
6" Flush Bolt
With Radius End
 Face: $\frac{3}{4}$ " x 6"
 Throw: 1"



#11014
4" Flush Bolt
With Square End
 Face: $\frac{3}{4}$ " x 4"
 Throw: $\frac{3}{4}$ "
 Strike: $\frac{5}{8}$ " x $1\frac{1}{2}$ "



Strike: 2" x 1"
 Strike: $2\frac{1}{4}$ " x 1"

#11020
Extension Flush Bolt
 Face: 1" x $6\frac{3}{4}$ "
 Length: $6\frac{3}{4}$ "
 Width: 1"
 Throw: 1"

idh's Solid Brass *Security Flush Bolts, Extension Flush Bolts* and *Dust Proof Strikes* are manufactured to meet and exceed USA industry standards. *Flush Bolts* come in 4 inch and 6 inch lengths.



#28400
Dust Proof Strike
 Length: $3\frac{1}{2}$ "
 Width: $1\frac{1}{2}$ "
 Body Diameter: $\frac{13}{16}$ "



#28401
Dust Proof Strike
Without Face Plate
 Length: $3\frac{1}{2}$ "
 Body Diameter: $\frac{13}{16}$ "

Section B

Solid Brass Door Guards, and Security Hardware



- #11041: 1.5" Surface Bolt, Throw: 3/8"
- #11042: 2" Surface Bolt, Throw: 7/16"
- #11043: 3" Surface Bolt, Throw: 7/16"
- #11044: 4" Surface Bolt, Throw: 1"
- #11046: 6" Surface Bolt, Throw: 1"
- #11066: 8" Surface Bolt, Throw: 1"



Six Lengths

idh's very popular classic Solid Brass *Surface Bolts* in 1½, 2, 3, 4, 6 and 8 inch lengths feature concealed screw installation, tension spring that holds the throw bolt solidly in position, quick and easy installation.

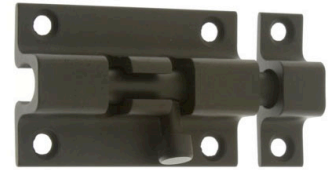


#11048
Chain Door Guard
Base 3-3/8" x 1-3/8"
Keeper: 2" x 3/4"



#11049
Chain Bolt Guard
Base 3½" x 1½"
Keeper: 1-3/8" x 1½"

#11285
2" Security Barrel Bolt



2¼" x 1-3/8" 1-3/8" x ½"



From 4 inch *Dutch Door Bolts* (#11270) to 36 inch *Surface Bolts*, **idh** has one of the widest selections of premium quality *Heavy Duty Solid Brass Decorative Surface Bolts* both in finishes and lengths. These *Surface Bolts* are offered in Standard Guides, Round or Colonial Swirl Knobs, and in 2 different types of Ornamental Guides. Standard lengths: 4¼, 8, 12, 18, 24 and 36 inch.

Other popular items in the category are Solid Brass *Security Guards*, *Chain Door Guards*, *Chain Bolt Guards* and 2" *Barrel Bolts*.



#28061
Security Guard
Base: 2½" x 1"
Arm: 4"
(rivet to end of arm)



#28062
Security Guard With Ball End
Base: 2½" x 1"
Arm: 4" (not including ball)

Section B

Solid Brass Heavy Duty Surface Bolts
Lengths: 8" 12", 18", 24", 36"



- *Standard Guides*
- *Ornamental Guides*



- *Round Knobs*
- *Colonial Swirl Knobs*



Section B

Solid Brass Heavy Duty Surface Bolts



**Heavy Duty Surface Bolt
With Round Knob**



#11272: 8" Rod



#11278: 12" Rod



#11280: 18" Rod

3 Strikes:
Mortise Strike
Angle Strike
Universal Strike



**Heavy Duty Surface Bolt
With Colonial Swirl Knob**



#11272S: 8" Rod



#11278S: 12" Rod



#11280S: 18" Rod



*Heavy Duty Surface Bolts with **Standard Guides***
Rod Lengths: 8", 12", 18", 24", 36"
Base Width/Rod Diameter: 5/8"
Guide Width: 1-5/8"



**Heavy Duty Surface Bolt
With Round Knob**

#11282: 24" Rod

#11288: 36" Rod



Mortise Strike



Angle Strike



Universal Strike



**Heavy Duty Surface Bolt
With Colonial Swirl Knob**

#11282S: 24" Rod

#11288S: 36" Rod



Section B
Solid Brass Heavy Duty Surface Bolts

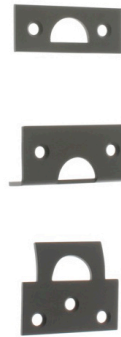


**Round Knob
Ornamental Bolt
With 2" Barrel Guide**

#11200: 8" Rod

#11208: 12" Rod

3 Strikes:
Mortise Strike
Angle Strike
Universal Strike



**Colonial Swirl Knob
Ornamental Bolt
With 2" Barrel Guide**

#11204: 8" Rod

#11212: 12" Rod

*Heavy Duty Surface Bolts with **Ornamental Guides***
Rod Lengths: 8", 12", 18", 24", 36"
Extra Wide Rod Diameter: 11/16"



**Round Knob,
Ornamental Bolt
With 3" Barrel Guide**

#11216: 18" Rod

#11224: 24" Rod

#11232: 36" Rod



**Colonial Swirl Knob,
Ornamental Bolt
With 3" Barrel Guide**

#11220: 18" Rod

#11228: 24" Rod

#11236: 36" Rod

3 Strikes:
Mortise Strike
Angle Strike
Universal Strike

Section C
Solid Brass Door Pulls



#25011
Round Base Pull
Through Bolt Mount
 5½" c/c
Overall Length: 7-3/8"
 Base Diameter: 2"
 Projection: 1-7/8"



#25036
Round Pull
Concealed Mount
 5-1/8" c/c
Overall Length: 6"
 Base Diameter: 1"
 Projection: 1-7/8"



#25040
4" c/c Bar Sash Lift/Door Pull
 Projection: 1"



#25042
3½" c/c Bar Sash Lift/Door Pull
 Projection: 1"

From 3½" c-to-c to 5 ½" c-to-c, these quality Solid Brass *Pulls* can be used as door, window, cabinet and general utility pulls.

Section D
Solid Brass Door Stops

idh... Your Ultimate **SOURCE** for *Solid Brass Door Stops & Holders*



#13010
3" Arrow Base Stop
 Base Diameter: 1¼"



#13009
4½" Arrow Base Stop
 Extra Wide Base Diameter: 1-5/8"



#13004
3¾" Base Stop with 2 Screw Holes
 Surface Mount
 Extra Wide Base Diameter: 1-5/8"



#13013
3¾" Fancy 3-Ring Base Stop
 Extra Wide Base Diameter: 1-7/16"

Section D

Solid Brass Door Stops and Door Holders



#13007
Mini Stop "Gooseneck"
Base Diameter: 1-1/8"
Height: 1-3/8"



#13012
Small Stop "Gooseneck"
Base: 2 1/2" x 1-5/8"
Height: 2"



#13014
Large Stop "Gooseneck"
Base: 2 1/2" x 1 1/2"
Height: 2-7/8"



#13016
"Cup" Stop & Holder with Hook
Wall mount
Base Diameter: 2 1/4"
Height: 4"



#13018
"Cup" Stop
Wall mount
Base Diameter: 2 1/2"
Height: 3 3/4"



#13020
"Canon" Hook Stop & Holder
Floor mount
Base Diameter: 2 1/4"
Height: 4"
Clearance: 3 1/4"



#13022
"Canon" Stop
Floor mount
Base Diameter: 2 1/2"
Height: 3-1/8"
Clearance: 2 3/4"

Section D

Solid Brass Door Stops and Door Holders



#13045
Wall Door Bumper
Diameter: 1"
Projection: 5/8"



#13060
Low Profile Dome Stop
Base Height: 1/8"
Overall Height: 1"
Base Diameter: 1 3/4"



#13070
High Profile Dome Stop
Base Height: 3/8"
Overall Height: 1-3/8"
Base Diameter: 1 3/4"



#13080
"Bullet" Stop
Base Diameter: 1 1/4"
Height: 1 3/4"
Clearance: 1"



#13085
"Flat Top" Stop
Base Diameter: 1 1/4"
Height: 1 1/2"
Clearance: 1"



#13087
High Clearance "Flat Top" Stop
Base Dia.: 1 1/4"
Height: 2 1/4"
Clearance: 1 3/4"

Section D

Solid Brass Door Stops and Door Holders



#13100
Square Kickdown Stop/Holder
4.5" Projection:
Base to tip of rubber
Arm Length: 4½"



#13102
Square Kickdown Stop/Holder
5.5" Projection:
Base to tip of rubber
Arm Length: 5½"



#13107
Triangle Kickdown Stop/Holder
5" Projection:
Base to tip of rubber
Arm Length: 5"



#13120
"Sphinx" Door Stop
(Kick Proof)
Base: 1¾" x 2½"
Height: 1-5/8"
Max Clearance: 1½"



#13029
Forged Hinge Pin Stop
Solid Brass
Width: 2½"

Make **idh** your ultimate source for *Door Stops* and *Door Holders*. With 27 models, **idh** has the right one to suit most mounting and height conditions for commercial or residential applications.

Section D

Solid Brass Door Stops and Door Holders



#13090
**Lion Head Bullet Door
Bumper/Stop**

Base Diameter: 1-3/8"
Height: 2-1/16"
Clearance: 1-5/16"

- *Lion Head*
- *Ribbon & Reed*
- *Melon*



#13092
**Ribbon & Reed Bullet
Door Bumper/Stop**

Base Diameter: 1-3/8"
Height: 2-1/16"
Clearance: 1-5/16"



#13097
**4" Ribbon & Reed
Arrow Base Stop**

Base Diameter: 1/4"
Length: 4/4"



#13094
**Melon Bullet Door
Bumper/Stop**

Base Diameter: 1-3/16"
Height: 2-1/16"
Clearance: 1-5/16"



#13200
**Ribbon & Reed
Crane Door Stop**

Height: 2/4"
Base Length: 2"
Base Width: 1-5/8"
Overall Height: Base End to Top 2/4"

Section E

Solid Brass Window Hardware



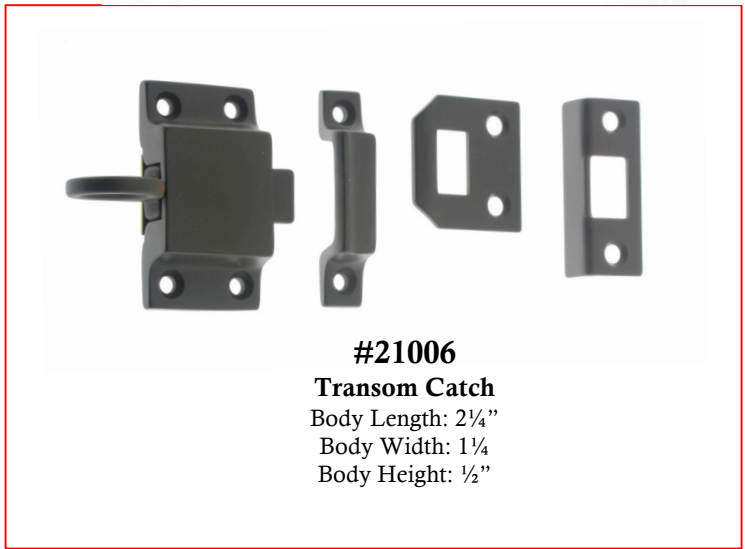
#21001
10" Casement Adjuster
 Overall Length: 10"
 Projection: 1-13/16"
 Rod Diameter: 3/8"



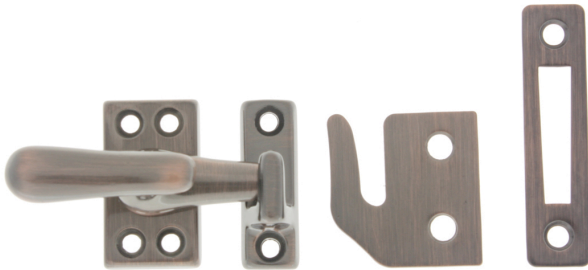
#21002
12" Casement Adjuster
 Overall Length: 12"
 Projection: 1-13/16"
 Rod Diameter: 3/8"



#21013
Small Casement Fastener
 Base: 1-9/16" x 7/8"
 Projection: 1-1/3"



#21006
Transom Catch
 Body Length: 2 1/4"
 Body Width: 1 1/4"
 Body Height: 1/2"



#21014
Large Casement Fastener
 Base: 2-1/16" x 1-1/16"
 Projection: 1-7/8"



#21019
Large Sash Catch
 Base: 2-7/8" x 1-1/16"
 Catch: 2-7/8" x 5/8"



#21020
Small Sash Catch
 Base: 2 1/2" x 7/8"
 Catch: 2 1/2" x 5/8"

idh's Solid Brass *Window Hardware* is made to the strictest quality standards from both appearance and mechanical standpoints. *Sash Catches*, *Casement Fasteners*, and *Casement Adjusters* all come in two sizes.

Section E

Solid Brass Window Hardware



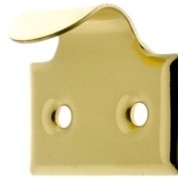
#21050
Heavy Duty
Ornamental Sunburst
Sash Lift
 Width: 1-7/8"
 Projection: 1-1/16"



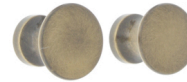
#21021
Shutter Bar Kit
 Base: 1-3/16" x 5/8"
 Knob Diameter: 5/8"



#21051
Heavy Duty
Sash Lift
 Width: 1 1/4"
 Projection: 1-1/16"



#21066
Window Hook Lift
 Width: 1-5/8"
 Projection: 7/8"



#25400
Rectangular
Flush Pull
 Length: 3-1/8"
 Width: 1-5/16"
 Depth: 5/16"



#25040
Sash Lift/Door Pull
 4" c/c
 Projection: 1"



#25042
Sash Lift/Door Pull
 3 1/2" c/c
 Projection: 1"

Section F

Solid Brass Hooks and Brackets



#17014
Single Hook
 Projection: 1 1/2"
 Height: 1-3/8"



#17016
Double Hook
 Proj: 1 1/2"
 Width: 2 3/4"



#17011
Garment Hook
 Projection: 3 3/4"
 Height: 7"



#17012
C Hook
 Projection: 3 3/4"
 Height: 5"



#17020
Coat & Hat Hook
 Projection: 3 3/4"
 Height: 2 3/4"

Section F

Solid Brass Hooks and Brackets

Superior quality and crisp definition on our period design *Handrail Brackets* are what sets our *Handrail Brackets* apart from the crowd. **idh** has 4 models of handrail brackets.



#18013
Hand Rail Bracket
 Base Width: 1½"
 Base Length: 2½"
 Projection: ¾"
 Base to Rail Center: 2½"



#18014
Hand Rail Bracket
 (Tapered Base)
 Base Width: 1-5/16"
 Base Length: ¾"
 Projection: 3-1/8"
 Base to Rail Center: 2½"



#18016
Windsor Hand Rail Bracket
 Base Width: 1½"
 Base Length: 3"
 Projection: 3-5/8"
 Base to Rail Center: 2-7/8"



#18020
Spider Web Hand Rail Bracket
 Base Width: 1-7/8"
 Base Length: 3-7/8"
 Projection: 4"
 Base to Rail Center: 2¾"

Section G

Solid Brass Cabinet Hardware



#25056
Wire Pull
4" c/c
Diameter: 5/16"



#25054
Wire Pull
3½" c/c
Diameter: 5/16"



#25052
Wire Pull
3" c/c
Diameter: 5/16"



#25050
Wire Pull
2½" c/c
Diameter: 5/16"

#25215
Small Drawer Pull
¾" c/c
Overall Length: 3¾"



#25216
Large Drawer Pull
¾" c/c
Overall Length: 4"



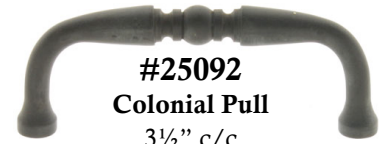
#21197
Round Knob
Diameter: 1½"
Height: 1-5/16"



#21194
Round Knob
Diameter: 1¼"
Height: 1-1/8"



#21196
Round Knob
Diameter: 1"
Height: 1"



#25092
Colonial Pull
¾" c/c
Diameter: 3/8"
Projection: 1¼"



#25090
Colonial Pull
¾" c/c
Diameter: 3/8"
Projection: 1¼"



#25040
Bar Sash Lift/Door Pull
4" c/c, Utility
Overall Length: 4-5/8"

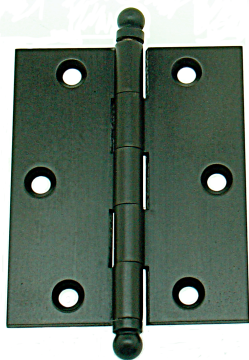


#25042
Bar Sash Lift/Door Pull
¾" c/c, Utility
Overall Length: 4"

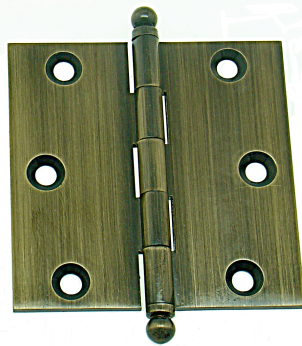


#25400
Rectangular Flush Pull
L: 3-1/8" W: 1-5/16", D: 5/16"

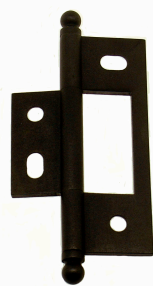
idh's premium quality Solid Brass *Cabinet Hinges* with *Ball Finials* are made to our stringent standards and specifications. Available in 2" x 1 ½", 2 ½" x 7 1/10" and 3" x 2" sizes, these *Hinges* and our other *Cabinet Hardware* selections are the perfect match for the most discriminating cabinetry.



#82520
Cabinet Hinge
2½" x 2" (Pair)



#82525
Cabinet Hinge
2½" x 2½" (Pair)



#82600
Non-Mortise
Cabinet Hinge
Overall HT: 3-1/16" (Pair)

#82015
Cabinet Hinge
2" x 1½" (Pair)



#82517
Cabinet Hinge
2½" x 1-7/10" (Pair)



#83020
Cabinet Hinge
3" x 2" (Pair)



Section H

Solid Brass Sliding Door Hardware

#14010
6¼" Edge Pull
 6¼" x 1¼"
 5-3/8" c/c



#14020
4" Edge Pull
 3-7/8" x ¾"
 3-3/8" c/c



#25410
Pocket Passage Pull
 Height: 2¾"
 Width: 2½"

idh's Sliding Door Combination Pulls (25410, 25411) in Passage and Privacy functions have been the industry standard for many years – easy to install and fully reversible. Also offered are our *Flush Pulls*, our hard to find premium quality 14010 6½" Edge Pull, 14020 4" Edge Pull and 28500 Mortise Door Bolt.



#25411
Pocket Privacy Pull
 Height: 2¾"
 Width: 2½"



#25220
Flush Ring Pull
 1¼" x 1½"



#25400
Rectangular Flush Pull
 L: 3-1/8", W: 1-5/16"
 D: 5/16"



#28410
ASA Universal Strike
 1-7/8" x 4-7/8"



#28500
Mortise Door Bolt
 Body Length: 2½"
 Diameter: 9/16"
 Throw: ½"



#25420
Round Flush Pull
 Diameter: 2-1/8"
 Depth: 3/8"
 Bore to Install Dia.: 2-1/8"

Section I

Solid Brass Exterior and Front Door Hardware



#20010
Windsor Knocker
6-1/8" x 3-1/8"



#20012
Wilmington Knocker
7" x 3-5/8"



#20014
Bostonian Knocker
6 3/4" x 4"



#20016
Claremont Knocker
8 1/4" x 4 1/4"



#20018
Charleston Knocker
6 1/2" x 3 1/2"



#20022
Beaded Knocker
8" x 3 3/4"



#20082
Mini Knocker
Hotel & Apartment
3 3/4" x 2 1/4"



4" Cast Solid Brass Numbers

- 0: #23020
- 1: #23021
- 2: #23022
- 3: #23023
- 4: #23024
- 5: #23025
- 6: #23026
- 7: #23027
- 8: #23028
- 9: #23029



6" Cast Solid Brass Numbers

- 0: #23200
- 1: #23201
- 2: #23202
- 3: #23203
- 4: #23204
- 5: #23205
- 6: #23206
- 7: #23207
- 8: #23208
- 9: #23209

From premium grade forged Solid Brass *Door Knockers* to **idh**'s *Flag Pole Holders* to our 4 inch and 6 inch *House Numbers*, our products will give any front door the quality first impression it deserves. *Select idh for quality. Select idh for looks.*



#21260
Rectangular Escutcheon
Storm Door Latch
4 1/2" x 1 1/2"
Knob Diameter: 1 3/4"
Projection: 2"



#21262
Dual Lever
Rectangular Escutcheon
Storm Door Latch
4 1/2" x 1 1/2"
Projection: 2"



Section I

Solid Brass Exterior and Front Door Hardware



#22110
Letter Mail Plate &
Open Back Plate
8 $\frac{3}{4}$ " x 2-7/8"
Opening: 7" x 1 $\frac{3}{4}$ "



#22120
Magazine Mail Plate &
Open Back Plate
13" x 3-9/16"
Opening: 11" x 2"



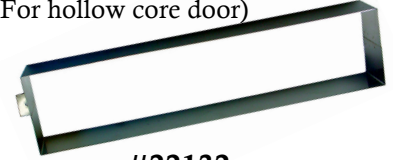
#22111
Letter Mail Plate
Front only
8 $\frac{3}{4}$ " x 2-7/8"
Opening: 7" x 1 $\frac{3}{4}$ "



#22121
Magazine Mail Plate
Front only
13" x 3-9/16"
Opening: 11" x 2"

#22130
Stainless Steel Sleeves for Letter
Mail Slot

W: 7-3/8", H: 2-3/8", D: 1 $\frac{3}{4}$ "
(For hollow core door)



#22132

Stainless Steel Sleeves
For Magazine Slot

W: 11-3/8", H: 2 $\frac{1}{2}$ ", D: 1 $\frac{3}{4}$ "
(For hollow core door)



#22123
Magazine Mail Plate
With Inside Cover
(Exclusive Curved Plate Design)
13" x 3-9/16"
Opening: 11" x 2"



#18052
Flag Pole Holder
For 1" Diameter Pole
Base: 2 $\frac{1}{4}$ " Wide
Overall Height: 6 $\frac{1}{4}$ "

#18050
Flag Pole Holder
For $\frac{3}{4}$ " Diameter Pole
Base: 1 $\frac{3}{4}$ " Wide
Overall Height: 4 $\frac{3}{4}$ "



Section I

Solid Brass Exterior and Front Door Hardware



#21250
Storm Screen Door Latch
Knob & Lever Model
Knob Diameter: 1 3/4"



#21252
Storm Screen Door Latch
Dual Lever Model



Key Plate
1-5/8" x 4 1/4"

#18054
Craftsman Twist
Bell
Width: 3-7/8"
Length: 5-5/8"



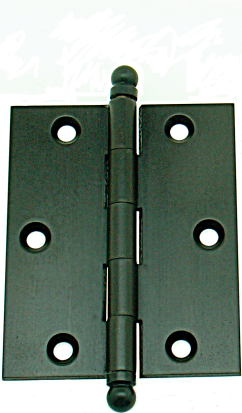
Key Plate
1 1/2" x 3-1/8"

#18055
Ornate Twist Bell
Width: 3-3/16"
Length: 4 1/2"

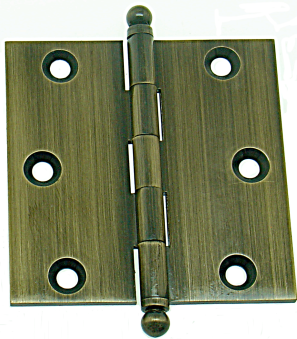


Section J

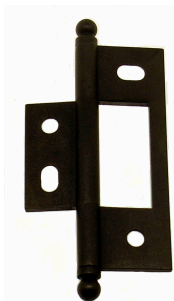
Solid Brass Door Hinges, Finials, and Cabinet Hinges



#82520
Cabinet Hinge
2 1/2" x 2" (Pair)



#82525
Cabinet Hinge
2 1/2" x 2 1/2"
(Pair)



#82600
Non-Mortise
Cabinet Hinge
Overall Height: 3-1/16"
(Pair)

#82015
Cabinet Hinge
2" x 1 1/2"
(Pair)



#82517
Cabinet Hinge
2 1/2" x 1-7/10"
(Pair)



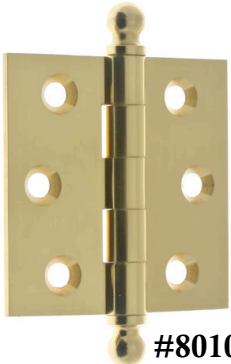
#83020
Cabinet Hinge
3" x 2"
(Pair)



Section J

Solid Brass Door Hinges, Finials, and Cabinet Hinges

Loose Pin Hinges



#80100
Loose Pin Hinge
2½" x 2½" (Pair)



#80101
Loose Pin Hinge
3" x 3" (Pair)

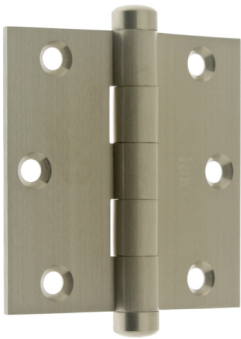


#80102
Loose Pin Hinge
3½" x 3½" (Pair)

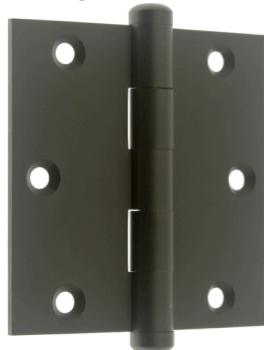


#80103
Loose Pin Hinge
4" x 4" (Pair)

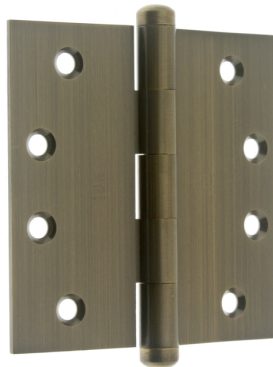
Full Mortise Door Hinges



#83030
Door Hinges
Square Corner
3" x 3" (Pair)



#83535
Door Hinges
Square Corner
3½" x 3½" (Pair)



#84040
Door Hinges
Square Corner
4" x 4" (Pair)



#84545
Door Hinges
Square Corner
4½" x 4½" (Pair)

Half-Surface Offset Hinges



#80001
Cabinet & Door
Half-Surface
Offset Hinges
2½" x 2¾" (Pair)



#80002
Cabinet & Door
Half-Surface
Offset Hinges
3" x 3¾" (Pair)



#80003
Cabinet & Door
Half-Surface
Offset Hinges
3½" x 4-3/8" (Pair)



#80004
Cabinet & Door
Half-Surface
Offset Hinges
4" x 5-1/8" (Pair)

Section J

Solid Brass Door Hinges, Finials, and Cabinet Hinges



#80320
Half Surface
Adjustable
Spring Screen
Door Hinge
With Ball Finials
 3"H x 2¾" (Pair)
 Overall Height:
 4" (tip to tip)

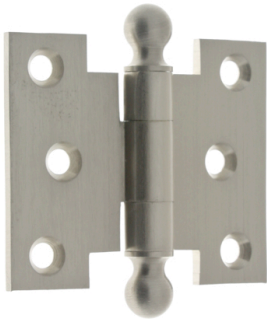


#80360
Heavy Duty
Spring Screen
Door Hinge
With Ball Finials
 3"H x 2½" (Pair)
 Overall Height:
 4¼" (tip to tip)



#84050
Wide Throw Ball Tip Hinge
 4" x 5" (Pair)

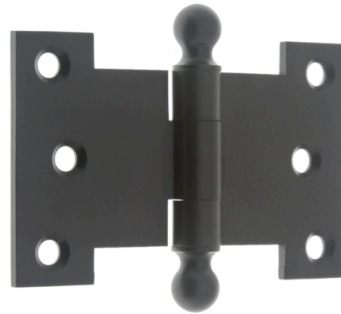
Parliament Hinges



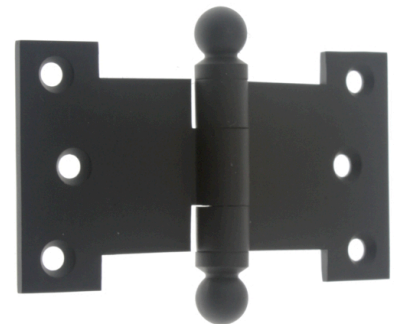
#80252
Parliament Hinges
With Ball Finials
 2½" x 3" (Pair)



#80253
Parliament Hinges
With Ball Finials
 2½" x 3½" (Pair)

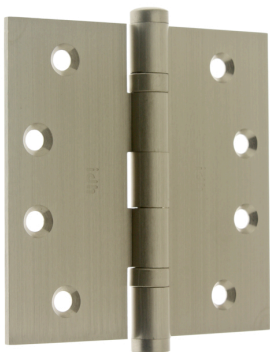


#80254
Parliament Hinges
With Ball Finials
 2½" x 4" (Pair)



#80255
Parliament Hinges
With Ball Finials
 2½" x 4½" (Pair)

Ball Bearing Hinges



#86000
Ball Bearing Hinges
 4" x 4" (Pair)
 Two Ball Bearings



#86001
Ball Bearing Hinges
 4½" x 4½" (Pair)
 Two Ball Bearings



Door Hinge Finials

- #88100: Ball
 - #88101: Urn
 - #88102 Acorn
 - #88103: Steeple
- (For Hinges:

#83030, #83535, #84040, #84545, #86000, #86001, #84050)

idh's extruded Solid Brass *Door Hinges* and among the very best in the industry today. Machined to tight tolerances for the exact fit, these hinges not only function superbly but will greatly enhance any door project. 4 attractive thread-in *Finials* are also offered.

Our premium quality *Heavy Duty Parliament Hinges* (2½ x 3", 2½" x 3½", 2½" x 4", 2½" x 4½") and our *Screen Door Hinges* are manufactured for heavy duty applications.

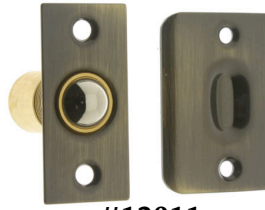
Our *Extruded Solid Brass Cabinet Hinges* are among the best in the industry: 5 sizes.

Section K

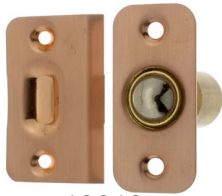
Solid Brass Ball Catches and Ball Latches



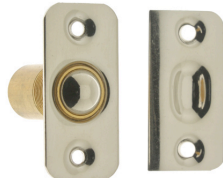
#12010
Narrow Square
Roller Ball Catch
 Face: 1" x 2-1/8"
 Strike: 1-1/16" x 2-1/8"
 Tube Diameter: 3/4"
 Tube Length: 1 1/2"



#12011
Wide Square
Roller Ball Catch
 Face: 1" x 2-1/8"
 Strike: 1-3/8" x 2-1/8"
 Tube Diameter: 3/4"
 Tube Length: 1 1/2"



#12012
Wide Round
Roller Ball Catch
 Face: 1" x 2-1/8"
 Strike: 1-3/8" x 2-1/8"
 Tube Diameter: 3/4"
 Tube Length: 1 1/2"



#12015
Narrow Round
Roller Ball Catch
 Face: 1" x 2-1/8"
 Strike: 1" x 2-1/8"
 Tube Diameter: 3/4"
 Tube Length: 1 1/2"



#12017
Heavy Duty
Silent Roller Latch
With Square Strike Adjustable
 Face: 3-3/8" x 1"
 Strike: 2 1/4" x 1-1/16"



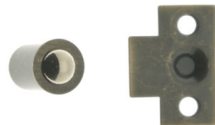
#12027
Rectangle Strike
 2 1/4" x 1-1/16"



#12038
T Strike
 2 3/4" x 1-7/8"



#12020
Tension Ball Catch
 3-Way
 1-5/16 x 3/8"
 Projection: 9/16" (Strike engaged)



#12040
Mini Ball Catch
 Tube Diameter: 3/8"
 Tube Length: 3/4"
 Strike: 1" x 3/4"



#12028
Heavy Duty
Silent Roller Latch
With T Strike Adjustable
 Face: 3-3/8" x 1"
 Strike: 2 3/4" x 1-7/8"

idh's 12017 and 12028 *Adjustable Roller Latches* can be easily adjusted for correct door clearance and tension. Excellent for rooms where silent functioning is required. When the door closes, the *Roller Latch* silently engages.

Section L

Solid Brass Heavy Cast Wall Plates and Wall Plates



#53001
Heavy Cast
Double Switch
Plate

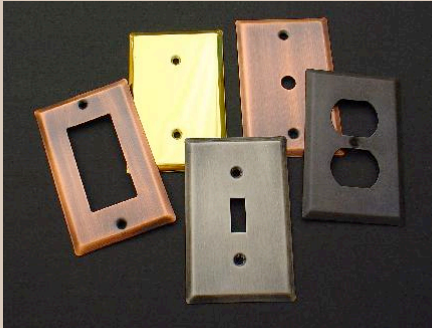


#53002
Heavy Cast
Single
Receptacle



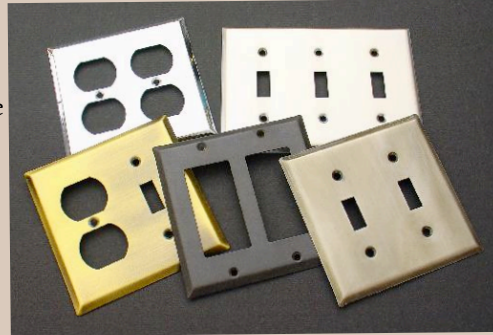
#53004
Heavy Cast
Single Switch
Plate

#28010
Square
Single
Cover
Plate



#28024
Square
Single
Antenna
Plate

#28058
Square
Double
Receptacle
Plate



#28022
Square
Triple
Switch
Plate

#28054
Square
Single
GFCI
Plate

#28012
Square
Single
Switch
Plate

#28014
Square
Single
Receptacle
Plate

#28020
Square
Double
Combo
Plate

#28056
Square
Double
GFCI
Plate

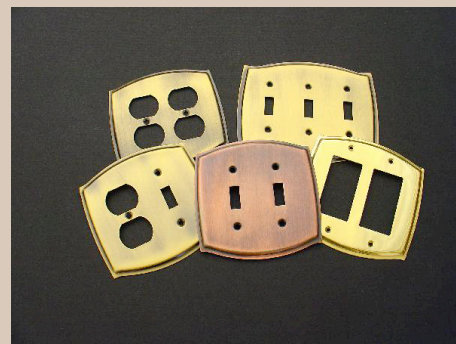
#28018
Square
Double
Switch
Plate

#28044
Round
Single
GFCI
Plate



#28034
Round
Single
Receptacle
Plate

#28048
Round
Double
Receptacle
Plate



#28042
Round
Triple
Switch
Plate

#28032
Round
Single
Switch
Plate

#28047
Round
Single
Antenna
Plate

#28030
Round
Single
Cover
Plate

#28040
Round
Double
Combo
Plate

#28038
Round
Double
Switch
Plate

#28046
Round
Double
GFCI
Plate

Wall Plates in traditional and contemporary looks – these solid brass diecast and stamped plates come in many finishes. Create that finishing touch with these premium quality plates.

Section M

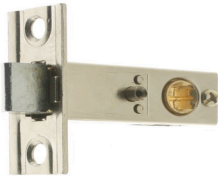
Solid Brass Door Hardware Components



1 3/4" Backset, Tubular Latch
#21110S: Passage, #21110V: Privacy



2-3/8" Backset, Tubular Latch
#21120S: Passage, #21120V: Privacy



2 3/4" Backset, Tubular Latch
#21130S: Passage, #21130V: Privacy



#21233 Rosette
(Pair) Diameter: 1 3/4"



#21231 Rosette
(Pair) Diameter: 2 3/4"



#21230 Rosette
(Pair) Diameter: 2 1/2"



#21225 Superior Quality Glass Knob Set With Zinc Diecast Shank



#21300 Crystal Knob - Octagonal Solid Brass Shank



#21301 Crystal Knob - Round Solid Brass Shank



#21302 Crystal Knob - Fluted Solid Brass Shank

idh's superior quality *Passage and Privacy Latches* come in 3 backset lengths: 1 3/4", 2-3/8" and 2 3/4". These latches are strictly cycle tested and are made for Heavy Duty applications. Latch Bolt spins 360 degrees.

Section N

Solid Brass Bath Accessories



Parlor Rack
#19000: 19" Wide
#19002: 24" Wide



#19021 18" 2-Tier Towel Shelf



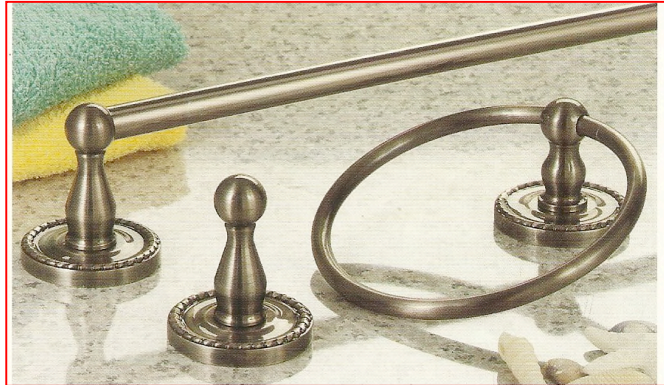
#19020 24" 3-Tier Towel Shelf

Section N

Solid Brass Bath Accessories



Newport Collection
 #B38402 18" Towel Bar
 #B38404 24" Towel Bar
 #B38406 30" Towel Bar
 #B38416 Towel Ring
 #B38422 Paper Holder
 #B38430 Single Hook



Bel-Air Collection
 #B33102 18" Towel Bar
 #B33104 24" Towel Bar
 #B33106 30" Towel Bar
 #B33118 Towel Ring
 #B33122 Paper Holder
 #B33130 Single Hook



Jade East Collection
 #B37102 18" Towel Bar
 #B37104 24" Towel Bar
 #B37106 30" Towel Bar
 #B37116 Towel Ring
 #B37122 Paper Holder
 #B37130 Single Hook



Savannah Collection
 #B36202 18" Towel Bar
 #B36204 24" Towel Bar
 #B36206 30" Towel Bar
 #B36216 Towel Ring
 #B36222 Paper Holder
 #B36230 Single Hook



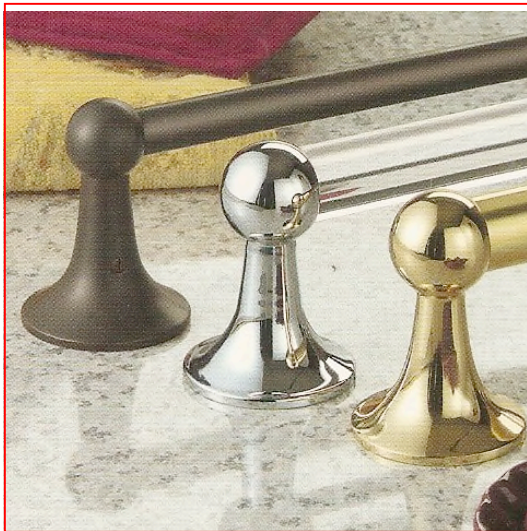
Section N

Solid Brass Bath Accessories



La Chine Collection

- #B34202 18" Towel Bar
- #B34204 24" Towel Bar
- #B34206 30" Towel Bar
- #B34216 Towel Ring
- #B34222 Paper Holder
- #B34230 Single Hook



Sovereign I Collection

With 1" Diameter Bar & 5/8" Diameter Bar

- #B11310 18" Towel Bar, 1" Dia. Bar
- #B11310A 18" Towel Bar, Acrylic 1" Dia. Bar
- #B15061 18" Towel Bar, 5/8" Dia. Bar
- #B11312 24" Towel Bar, 1" Dia. Bar
- #B11312A 24" Towel Bar, Acrylic 1" Dia. Bar
- #B15062 24" Towel Bar, 5/8" Dia. Bar
- #B11315 30" Towel Bar, 1" Dia. Bar
- #B11315A 30" Towel Bar, Acrylic 1" Dia. Bar
- #B15069 30" Towel Bar, 5/8" Dia. Bar
- #B11314 Paper Holder
- #B11318 Towel Ring
- #B11320 Single Hook



Bryn Mawr Collection

With 1" Diameter Bar & 5/8" Diameter Bar

- #B39102A 18" Towel Bar, 1" Acrylic Bar
- #B39103 18" Towel Bar, 1" Dia. Brass Bar
- #B39140 18" Towel Bar, 5/8" Dia. Bar
- #B39104A 24" Towel Bar, 1" Acrylic Bar
- #B39105 24" Towel Bar, 1" Dia. Brass Bar
- #B39142 24" Towel Bar, 5/8" Dia. Bar
- #B39106A 30" Towel Bar, 1" Acrylic Bar
- #B39107 30" Towel Bar, 1" Dia. Brass Bar
- #B39144 30" Towel Bar, 5/8" Dia. Bar
- #B39122 Paper Holder
- #B39130 Towel Ring
- #B39134 Single Hook



idh supplies a wide spectrum of high quality solid brass architectural and decorative hardware and bath accessories. Our products are strategically positioned to appeal to your pro-customers who demand elegance and quality in solid brass at great prices.

- More than 10 finishes
- Premium quality
- Large inventory – 90%+ fill rate for quick ship in 72 hours
- Great prices
- USA quality packaging
- **Exceptionally FRIENDLY and PROFESSIONAL service providing P.O.M.:**

“Peace Of Mind”!

OUR MISSION

To enhance our customers' competitive position by providing quality products, quality packaging, great value, quick ship and superb customer service.



idh

by St. Simons, Inc.

Demand Quality, Demand **idh**®



idh *by St. Simons, Inc.*

“The Special Finishes Specialist”©

PO BOX 6776
ORANGE, CALIFORNIA 92863-6776

www.idhbrass.com

Tel: 800-337-9398
Email: info@idhbrass.com

Fax orders: 800-455-9948
Email orders: orderdesk@idhbrass.com

DISTRIBUTED BY: