

TEMPLATE NO.

18951
SHT 1 OF 2

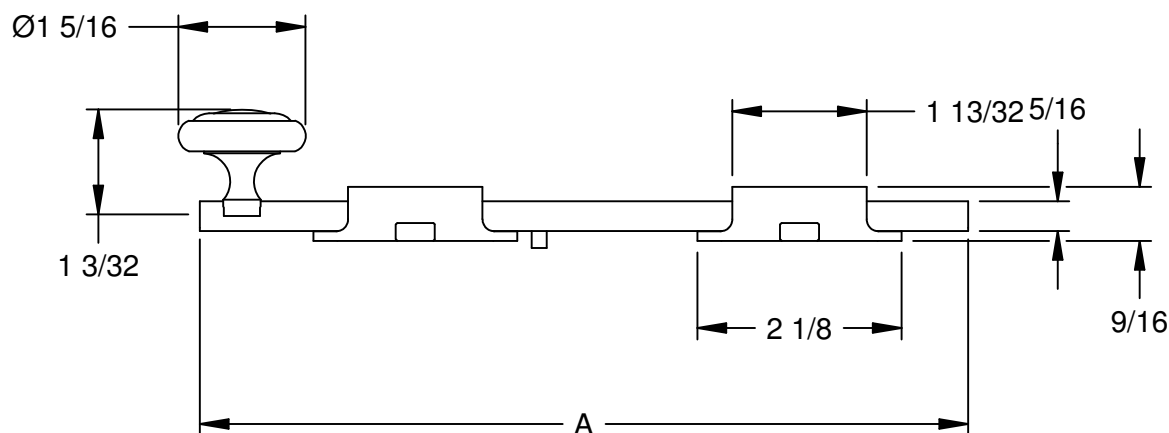
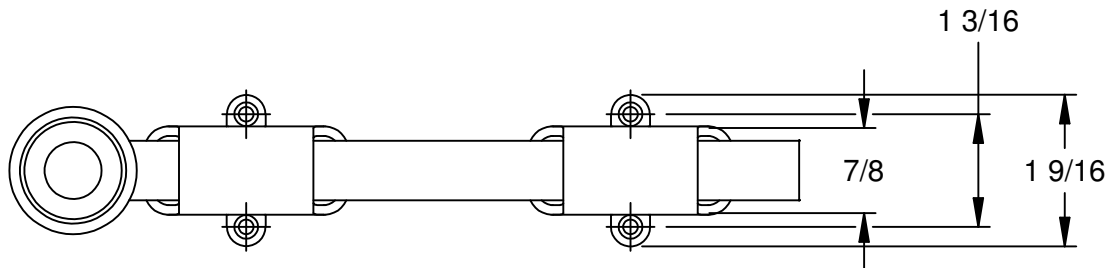
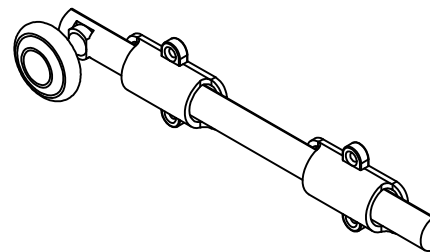


3528 Emery Street
PO BOX 23277
Los Angeles, CA 90023-0277
(323)262-4191 www.trimcobbw.com
email:info@trimcobbw.com

PRODUCT

3920/3921
SURFACE BOLT

SUPPLIED WITH #6 X 3/4 UNDERCUT FLAT HEAD, PHILLIPS DRIVE, SHEET METAL MOUNTING SCREWS



PART NUMBER	DIMENSION "A"
3920-4	4-1/4
3920-8	8
3920-36	36
3920-48	48
3921-8	8
3921-12	12
3921-18	18
3921-24	24
3921-36	36
3921-48	48

THE DIFFERENCE BETWEEN 3920 AND 3921 IS THE KNOB - THE 3920 KNOB IS SMOOTH WHILE THE 3921 KNOB IS GROOVED - AS SHOWN.

SEE SHEET 2 FOR STRIKE DATA

NOTE: This template is provided for use only on the job for which is was requested. Trimco reserves the right to make design changes without notice. Trimco will not be responsible for errors or damage caused by the use of out-of-date templates.

DATE

08/22/12

TEMPLATE NO.

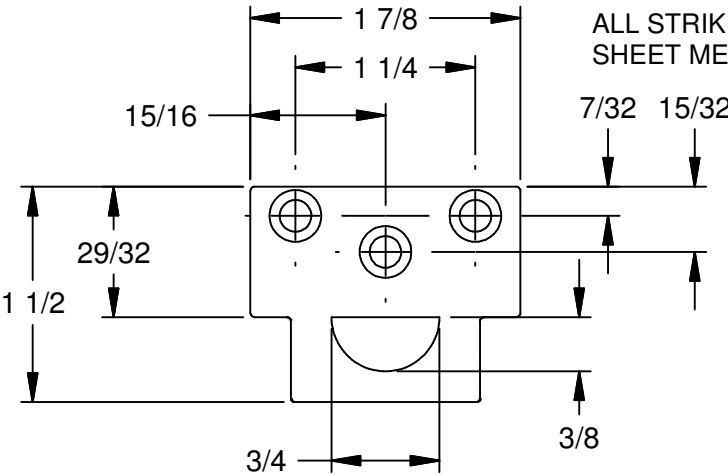
18951
SHT 2 OF 2



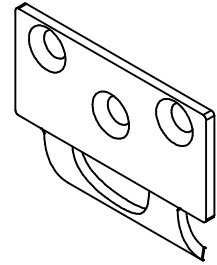
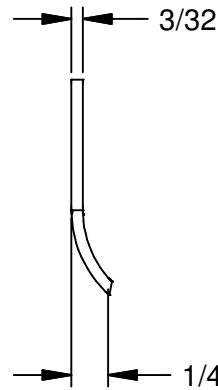
3528 Emery Street
PO BOX 23277
Los Angeles, CA 90023-0277
(323)262-4191 www.trimcobbw.com
email:info@trimcobbw.com

PRODUCT

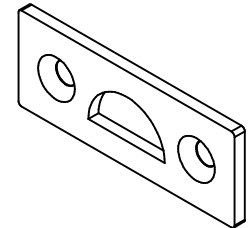
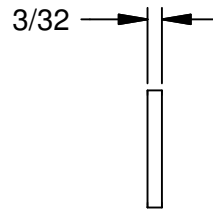
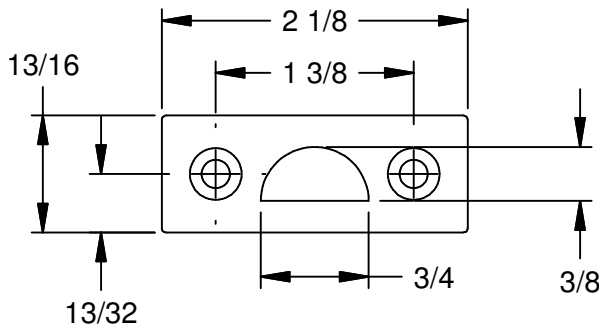
3920/3921
SURFACE BOLT STRIKES



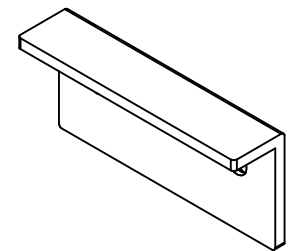
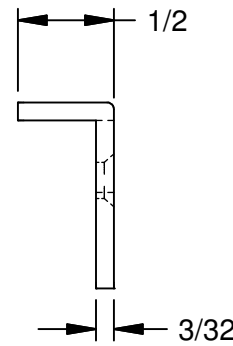
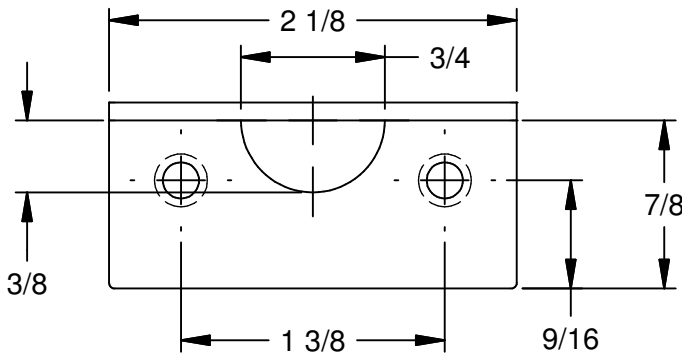
ALL STRIKES SUPPLIED WITH #6X3/4 FLAT HEAD, PHILLIPS DRIVE SHEET METAL MOUNTING SCREWS



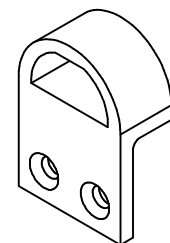
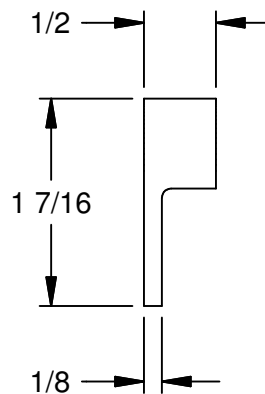
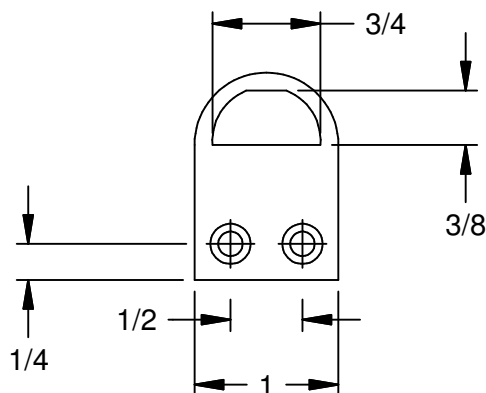
UNIVERSAL STRIKE
SUPPLIED WITH ALL
EXCEPT -4



MORTISE STRIKE
SUPPLIED WITH -4
AVAILABLE UPON
REQUEST FOR OTHERS



ANGLE STRIKE
AVAILABLE UPON
REQUEST



CAST ANGLE STRIKE
SUPPLIED WITH -4 ONLY

REVISION RECORD:
CORRECTED C-SINK HOLES, REMOVED DIMS 3/32 AND 31/32 FROM ANGLE STRIKE: (SGH/JG, DATE: 08/22/12)
SUPERSEDES REVISION RECORD, DATED: (10/20/08)

NOTE: This template is provided for use only on the job for which is was requested. Trimco reserves the right to make design changes without notice. Trimco will not be responsible for errors or damage caused by the use of out-of-date templates.

DATE

08/22/12