

TEMPLATE NO.

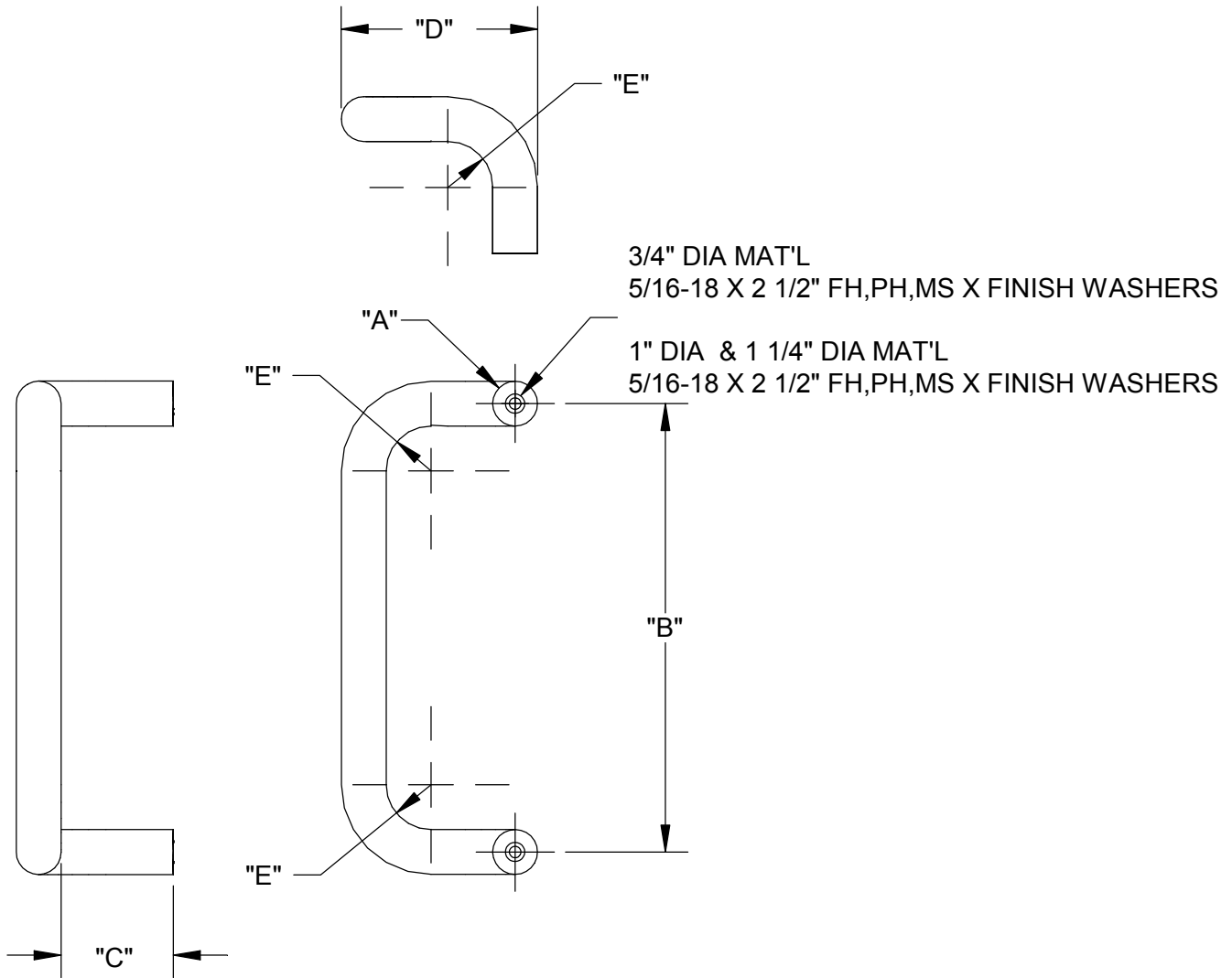
17248



3528 Emery Street  
 PO Box 23277  
 Los Angeles, CA 90023-0277  
 (323) 262-4191  
 www.trimcobbw.com

PRODUCT

1191-1, 1191-2, 1191-3,  
 1191-4, 1191-5, 1191-4J, 1191-5J,  
 PULL



NOTE: SEE MOUNTING DETAIL FOR METHODS OF MOUNTING

TRIMCO	A	B	C	D	E
PART NUMBER	MAT'L DIA.	CENTER TO CENTER	CLEARANCE	OFFSET (OUTSIDE TO OUTSIDE)	RADIUS
1191-1	3/4" DIA	8"	2 1/2"	3 7/8"	3/4"
1191-2	3/4" DIA	10"	2 1/2"	3 7/8"	3/4"
1191-3	1" DIA	10"	2 1/2"	4 3/8"	1"
1191-4	1" DIA	12"	2 1/2"	4 3/8"	1"
1194-5	1" DIA	18"	2 1/2"	4 3/8"	1"
1191-4J	1 1/4" DIA	12"	2 7/8"	5 1/4"	1 1/4"
1191-5J	1 1/4" DIA	18"	2 7/8"	5 1/4"	1 1/4"

NOTE: This template is provided for use only on the job for which it was requested. Trimco reserves the right to make design changes without notice. Trimco will not be responsible for errors or damage caused by the use of out-of-date templates.

DATE

2/24/06