

STANLEY[®]
Security Solutions



DOOR CLOSERS

Price List 61DC
Effective: May 7, 2012

STANLEY[®]
Closers

Contents

Contents	2
What is new in this Price List	3
Nomenclature Updates	4
Sales Policy	5
Warranty	6
General Product Information	7
How to Order	7
D-4990/D-4990T Low Energy Operator	8
D-4550/D-4551 Series Closers	9
D-4550EH Electronic Hold Open	10
D-3550/D-3551 Series Closers	11
D-1610/D-1611 Series Closers	12
C030/C050 Series Concealed Closers	13
Mounting Accessories	14
Covers	15
Arm Components	15
Order Form	16
Notes	17

D-1610 SERIES STANLEY DOOR CLOSER



The Newly launched D-1610 is a slim line closer designed to accommodate the standard aluminum storefront application footprint. The D-1610 series construction incorporates heat treated steel components combined with a durable cast aluminum cylinder body.

Although both products incorporate a common mounting hole pattern, the D-1610 cylinder body and tri-pack arm assembly possess a more robust design and customer driven aesthetic appeal over the previous D-1650 model. Consequently, with the launch of the new D-1610, the D-1650 series will be discontinued.

Certified ANSI/BHMA A 156.4 Grade 1, UL10C, and UBC 7-2
10 year Limited Warranty (refer to the Stanley Door Closer Price Book)

How to order and other information can be found on page 7.

If you require additional information regarding this new product or any other Stanley products, please contact local Stanley sales representative or the Stanley Customer Service team at 800.711.6814. You can also view the Stanley Closers catalogs by visiting www.stanleydoorclosers.com

Nomenclature Updates



Security Solutions

Adam Matusz
Group Product Manager
Stanley Security Solutions, Inc.

RE: Nomenclature Changes

With recent upgrades of our internal systems including the implementation of SAP, Stanley Security Solutions, Inc. has made several adjustments to our product ordering nomenclature and process. By ensuring all nomenclature is consistent on invoices, catalogs, and literature we are making another step forward in our quest to be easier to do business with. We greatly appreciate your continued support, changes will be reflected in all versions of our new price books launching May 7, 2012.

As reference, below are examples of the nomenclature updates to our Stanley Door Closers

Stanley Door Closers (SDC)

- CL has been added to the beginning of all door closer product numbers:

HOW TO ORDER

CLOSERS

Options: add suffix:
 AVB - Advanced Variable Backcheck (optional)
 DA - Delayed Action (optional)
 LL - Lead Lined Cover (optional)
 MC - Metal Cover (optional)

Size: D - (refer to individual closer)
 1 - Size 1-4

Model No.

Arm Type: add suffix:
 L - Long Rod Forearm (TJ only)
 H - Standard Hold-Open
 HL - Standard Hold-Open w/ Long Rod & Shoe
 HXL - Standard Hold-Open w/ Long Rod & Shoe
 RH - Parallel Hold-Open
 EDA - Heavy Duty Arm
 EH - Electronic Hold-Open
 HEEDA - Heavy Duty Arm w/ Hold-Open
 JS - Heavy Duty Arm w/ Stop
 CS - Heavy Duty Arm w/ Compression Stop
 HS - Heavy Duty Arm w/ Hold-Open & Stop
 HCS - Heavy Duty Arm w/ Hold-Open & Comp. Stop
 T - Track Mount
 HT - Track Mount w/ Hold-Open
 TCS - Track Compression Stop

Finish:
 850 - Aluminum
 850 - Statuary Bronze
 851 - Bronze
 852 - Black
 855 - Dark Bronze
 856 - Brass
 Finish Option:
 GR - Special Rust Inhibitor

Fasteners:
 *CN - Hex Nuts & Bolts
 Wood & Machine
 Screws furnished
 standard.
 SEC - Security Screws
 ** When using hex nuts with
 doors thicker than 1-3/4"
 please indicate on order form.

CLD-4550DAEDA x 689 x SN

SERIES	OLD PRODUCT NUMBER		NEW PRODUCT NUMBER
D-4550	D-4550DAEDA x 689 x SN	=	CL D-4550DAEDA x 689 x SN
D-3550	D-3550DAPH x 690 x SEC	=	CL D-3550DAPH x 690 x SEC
D-1610	D-1611H x 689 x SN	=	CL D-1611H x 689 x SN

Again, we apologize for any inconvenience this may have caused. The overall implementation of these new data systems will help us to better serve you in the future.

Thank you,

Adam Matusz
Group Product Manager
Stanley Security Solutions

Stanley Security Solutions, Inc.
Corporate Headquarters: 6161 East 75th Street, Indianapolis, IN 46250
Ph: 317 849 2250 Fax: 317 806 3127
www.stanleysecuritysolutions.com

Sales Policies

PRICES: All previous prices are superseded by this List Price. All prices are subject to change without notice. Orders for users outside the continental United States will be by quotation from the International Department to cover any additional import duties, freight, communications, and insurance cost.

All valid orders must either be accompanied by a valid quote or be part of a current and registered buying program. If an order is received that does not meet either of these conditions, it will not be entered and will be forwarded to the local contract construction representative for resolution.

ALL ORDERS WILL BE FILLED AT PRICES IN EFFECT AT THE TIME OF ORDER.

ORDERS: Stanley Security Solutions, Inc (Stanley) reserves the right to decline orders in which the price or quantity of goods is not satisfactory. Stanley will not be bound to fill any orders unless or until they have been accepted at the Indianapolis office. Stanley will accept orders via phone, email, fax or courier.

Note: Receipt or possession of this price book does not grant approval to quote or purchase Stanley products. Please contact your Stanley sales representative for further details.

For customers who have been issued a valid quote: **THE QUOTE NUMBER AND PRICE LIST NUMBER USED MUST BE CLEARLY REFERENCED ON THE ORDER.** A \$100 service fee will be deducted from any credit issued on an order in which the quote number and proper price list number was not referenced.

SPECIAL ORDERS: Any modification to a standard product configuration is considered a special order. No credits will be issued for returned special orders unless authorized by Customer Service (800) 711-6814.

PHONE ORDERS: Accuracy of phone orders will be determined by receipt of a written confirmation or acceptance of our acknowledgment.

SAMPLES: Please contact your local Stanley Contract Construction Representative (CR) for sample requests.

CANCELLATIONS: After orders are entered for manufacturing, cancellations cannot be accepted without our permission, and may be subject to a cancellation charge equivalent to 30% of the purchase price.

MINIMUM CHARGE: The expense of handling an order necessitates a minimum charge of \$50.00 net per invoice.

TERMS: Thirty (30) days net. Stanley reserves the right to add a service charge to all invoices past due. International sales are accepted with a confirmed irrevocable letter of credit.

DELIVERY: We endeavor to make prompt shipment of all orders, but we shall not be held responsible for any loss or damage resulting from delay in filling orders due to causes beyond our control, including delivery of material to us.

FREIGHT ALLOWANCES: All shipments are F.O.B. factory via carrier we select. Goods in transit are at the risk of the buyer. Single or combined shipments including Stanley lock sets, exit devices, and door closers will be considered for free freight with orders at or above \$6,000 net (product combination must be on same purchase order). These freight terms apply only to a single destination within the contiguous United States.

EXPORT REGULATIONS: Purchaser agrees to conform to, and abide by, the export laws and regulations of the United States, including, but not limited to, the Export Administration Act of 1979 as amended and its implementing regulations. Diversion contrary to US laws and regulations is prohibited.

CLAIMS: All claims due to errors or defects must be submitted, in writing, within 30 days after receipt of goods. When Stanley is responsible, adjustments will be made.

PROPER INSTALLATION: Current installation instructions for any Stanley exit device product should be carefully followed for proper operation of the installed unit. If improperly installed, malfunction of the unit may result.

BACK CHARGES: Stanley is not responsible for, does not authorize, and will not accept any back charges for the cost of any labor or material incurred by anyone other than Stanley for any repair, service, installation or replacement unless approved with Stanley's prior written consent.

RETURNED GOODS: Customer has up to one (1) year from date of invoice to return goods except for warranty returns. All materials returned to Stanley, regardless of the reason, must have a correct Return Goods Authorization (RGA) number applied to the outside of the shipping carton. All goods must be returned in original packaging and be in resalable condition except for warranty returns. Transportation charges of returned goods must be prepaid by the customer. A re-stocking charge of 30% of the purchase price will be applied to the customer's account except for warranty returns. All goods must be returned within sixty (60) days of RGA issue date. Product not returned in saleable condition or after sixty (60) days of the RGA number issue date is subject to disposal by Stanley with no credit issued. Use fax number 888-214-1918 for returned goods authorization only.

Warranty

1. STANLEY SECURITY SOLUTIONS, INC. mechanical products are warranted against defects in material and workmanship for a period of **TEN (10) YEARS** from the date of invoice. The D-4550EH, and D-4990 product is warranted against defects in material and workmanship for a period of **TWO (2) YEARS** from the date of invoice.

2 STANLEY SECURITY SOLUTIONS, INC. electrical products are warranted against defects in material and workmanship for a period of **ONE (1) YEAR** from the date of invoice.

3 This warranty does not cover defects or damage arising from failure to perform normal maintenance, faulty installation, ordinary wear and tear, misuse, abuse, freight damage, application for which the product was not designed, or incorrect or improper wiring of electrical products.

4 Claims under this warranty must be made in writing to STANLEY. At its option, STANLEY will repair the defect, replace the product, or issue credit at the net value originally invoiced. STANLEY liability shall in no event exceed the net cost of the product.

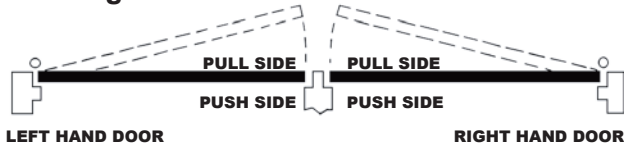
REPAIR, REPLACEMENT OR CREDIT AS PROVIDED UNDER THIS WARRANTY IS THE EXCLUSIVE REMEDY OF THE CONSUMER. STANLEY SECURITY SOLUTIONS, INC. SHALL NOT BE LIABLE FOR ANY INCIDENTAL OR CONSEQUENTIAL DAMAGES FOR BREACH OF ANY EXPRESS OR IMPLIED WARRANTY ON THIS PRODUCT. EXCEPT TO THE EXTENT PROHIBITED BY APPLICABLE LAW, ANY IMPLIED WARRANTY OF MERCHANTABILITY OR FITNESS FOR A PARTICULAR PURPOSE ON THIS PRODUCT IS LIMITED IN DURATION TO THE DURATION OF THIS WARRANTY. WE ARE NOT RESPONSIBLE FOR ANY CHARGES FOR LABOR OR MATERIALS INCURRED BY OTHERS WITHOUT OUR PRIOR WRITTEN CONSENT.

Some states do not allow the exclusion or limitation of incidental or consequential damages, or allow limitations on how long an implied warranty lasts, so the above limitations or exclusion may not apply to you. This warranty gives you specific legal rights, and you may also have other rights which vary from state to state.

Closers

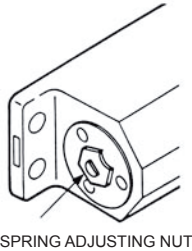
General Information

Handing



Closing Power Adjustment

Closers with spring power adjustment to size (6) are set at size (3) before leaving the factory. Closers with spring power adjustment from 1-4 are set at size (2) before leaving the factory.



Interchangeable Arms

All D-3550/D-3551 and D-4550/D-4551 Series arms are interchangeable.

Thru Bolts and Sex Nuts

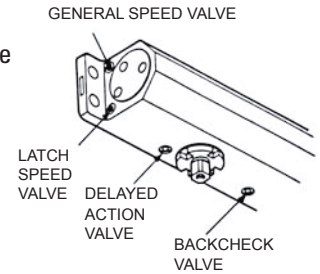
When thru bolting is ordered, factory will furnish sex nuts for use with the machine screws furnished with the closer. Nuts are sized to accommodate 1-3/4" thick doors. D-4550, D-3550 – 12/24 thread \$1.25 each
D-1610 – 10/32 thread \$1.25

Security Screws

All mounting screws will be Torx pin tamper resistant machine screws. Available for Heavy Duty Arm applications only Specify SEC Security Screws.

Delayed Action

A delayed action feature is available with this series for all applications and arms. The feature permits the door to close very slowly through the delayed action cycle range. To order, suffix DA to closer number.



Advanced Variable Backcheck (AVB) optional Cylinder starts backcheck at approximately 45° instead of the normal 75°. Add suffix "ABV" to selected cylinder. When combined with Delayed Action consult factory for special template (Heavy Duty Arm applications).

Packing

All surface mounted closers with standard arm sets are packed for mounting on regular, parallel arm or top jamb applications. D-1610 Series are packaged (10) closers per case. D-4550EH are packaged (1) per package. All other closers are packaged individually.

ANSI and UL Specifications

The Stanley door closers D-1610, D-3550, D-4550 Series meet the requirements of the ANSI/BHMA Standard A156.4 – 2000 Grade 1. Underwriters' Laboratories and Underwriters' Laboratories of Canada Listing. "For Self-Closing Doors Without Hold-Open feature" on R7551®.



How To Order

CLOSERS

Options: add suffix

AVB - Advanced Variable Backcheck (optional)
DA - Delayed Action (optional)
LL - Lead Lined Cover (optional)
MC - Metal Cover (optional)

Size: 0 - (refer to individual closer)
1 - size 1-4

Model No.

Arm Type: add suffix

L - Long Rod Forearm (TJ only)
H - Standard Hold-Open
HL - Standard Hold-Open w/ Long Rod & Shoe
HXL - Standard Hold-Open w/ Long Rod & Shoe
PH - Parallel Hold-Open
EDA - Heavy Duty Arm
EH - Electronic Hold-Open
H-EDA - Heavy Duty Arm w/ Hold-Open
S - Heavy Duty Arm w/ Stop
CS - Heavy Duty Arm w/ Compression Stop
HS - Heavy Duty Arm w/ Hold-Open & Stop
HCS - Heavy Duty Arm w/ Hold-Open & Comp Stop
T - Track Mount
HT - Track Mount w/ Hold-Open
TCS - Track Compression Stop

CLD-4550DAEDA × 689 × SN

Finish:

689 - Aluminum
690 - Statuary Bronze
691 - Bronze
693 - Black
695 - Dark Bronze
696 - Brass

Finish Option:

SRI - Special Rust Inhibitor

Fasteners:

* SN - Sex Nuts & Bolts
Wood & Machine
Screws furnished
standard

SEC - Security Screws

* When using sex nuts with doors thicker than 1-3/4" please indicate on order form.

Closers

D-4990 Low Energy Operators and Accessories

D-4990



Low Energy Operators (Non-handed)

D-4990T



628
313-dark
bronze

Description

For additional switch plates available contact your local Stanley Security Solutions representative.

8R-D-4990 Series - Push Side Mount (includes arm assembly)

D-4990

4,094

8R-D-4990T Series - Pull Side Mount (includes arm assembly)

D-4990T

4,143

Accessories

6" Round 6" Ring



4 1/2" Square



Jamb



Dual Plate



Touchless



433



Push Plate Posts



Description

Product No.

Arm Assemblies (used with D-4990) A45-501L 77
(used with D-4990T) A45-507T 131

Optional Power Supply 24VDC @ 0.5A PS-490 47

6" Round Stainless Steel Plate

Handicap logo and Push-to-Open text CL2216 179
6" round surface mount box CL2220 75
6" round weather ring CL2223 13

4 1/2" Square Stainless Steel Plate

Handicap logo and Push-to-Open text CL4163 168
4 1/2" square surface mount box CL4638 75

Jamb Stainless Steel Plate

Handicap logo and Push-to-Open text CL2055 131
Surface mount box CL2245 22

Dual Push Plate "Vestibule Plate"

Vestibule plate with text, logo and arrows CL2388 261

Touchless Push Plates

Touchless push plate fits single/double gang box CL2025 270

Radio Control 433 Transmitters / 433 Receiver

Digital transmitter 433MHz w/flag conn 9V battery (1 button) CL4490 175
433 MHz digital receiver CL4485 192

Push Plate Posts

Silver - mounting post for stainless steel push plates* CL2248 363
Black - mounting post for stainless steel push plates* CL2247 351
Bronze - mounting post for stainless steel push plates* CL2249 363
* For use with 4 1/2" square plates part # CL4163

Push Plate Packages

2 square push plates, 2 boxes (surface or flush mount),
2 transmitters, 1 receiver (433 Freq) CL4976 1,030

Low Energy Operator

Weight

D-4990 40 lbs
D-4990T 40 lbs

To Order: Specify: 8R-D-4990 × 628 Accessories ordered separate

Closers

D-4550/D-4551 Series Surface Closers

COMPLETE CLOSERS

Application	D-4550/D-4551 Series	Price	Weight
Standard, Parallel Arm, Top Jamb	Std. w/PA Brkt	330	9 lbs
Long Rod Forearm (top jamb only)	L	330	9 lbs
Hold Open Arm (standard & top jamb)	H	356	9 lbs
Hold Open Parallel Arm	PH	356	9 lbs
Heavy Duty Arm (PA only)	EDA	356	11 lbs
Electronic Hold Open	EH	643	11 lbs
Heavy Duty Arm w/ Hold Open (PA only)	H-EDA	398	11 lbs
Heavy Duty Arm w/ Stop (PA only)	S	390	11 lbs
Heavy Duty Arm w/ Compression Stop (PA only)	CS	528	11 lbs
Heavy Duty Arm w/ Hold Open & Stop (PA only)	HS	433	11 lbs
Heavy Duty Arm w/ Hold Open & Compression Stop (PA only)	HCS	562	11 lbs
Track Mounting (pull side only)	T	384	10 lbs
Track Mounting with Hold Open (pull side only)	HT	398	10 lbs
Track Compression Stop	TCS	398	10 lbs

Options		Price
Advanced Variable Backcheck Option	AVB	15
Delayed Action Cylinder Option	DA	30
Sex Nuts (add 1 package per closer - 4 sex nuts per pkg)	SN	6
Lead Lined Cover	LL	63
Metal Cover (brushed, stainless steel standard)	MC	33
Security Screws	SEC	64
Special Rust Inhibitor	SRI	32

CYLINDER ASSEMBLY SETS

Description	Assembly No.	Price	Weight
Cylinder Body and Cover, size 1-6 or 2-6	DB-4550	254	7 lbs
Cylinder Body and Cover, size 1-4	DB-4551	254	7 lbs
Cylinder Body and Cover with DA, size 1-6 or 2-6	DB-4550DA	285	7 lbs
Cylinder Body and Cover with DA, size 1-4	DB-4551DA	285	7 lbs

ARM ASSEMBLY SETS

Description	Assembly No.	Price	Weight
Standard Arm Set (Std, PA & Top Jamb)	A45-501	76	2 lbs
Standard Arm with Long Rod and Shoe Set (Top Jamb)	A45-501L	76	2 lbs
Standard Hold-Open Arm Set (Std & Top Jamb)	A45-501H	102	2 lbs
Standard Hold-Open Arm w/ Long Rod and Shoe Set	A45-501HL	102	2 lbs
Standard Hold-Open Arm w/ Long Rod and Shoe Set	A45-501HXL	102	2 lbs
Parallel Hold-Open Arm Set	A45-503H	102	2 lbs
Heavy Duty Parallel Arm Set	A45-505	102	4 lbs
Heavy Duty Parallel Arm Set w/ Hold-Open	A45-505H	144	4 lbs
Heavy Duty Parallel Arm Set w/ Stop	A45-505S	135	4 lbs
Heavy Duty Parallel Arm Set w/ Compression Stop	A45-505CS	274	4 lbs
Heavy Duty Parallel Arm Set w/ Hold-Open and Stop	A45-505HS	179	4 lbs
Heavy Duty Parallel Arm Set w/ Hold-Open and Comp Stop	A45-505HCS	308	4 lbs
Track Rail Arm and Track Set (pull side only)	A45-507T	130	3 lbs
Track Rail Arm and Hold-Open Track Set (pull side only)	A45-507HT	144	3 lbs
Track Compression Stop	A45-507TCS	144	3 lbs
Electronic Hold-Open Track Arm Assembly ...	A45-507EH	389	3 lbs

NOTES

- Closers are available in the following painted finishes: Aluminum (689), Dark Bronze (695), Statuary Bronze (690), Bronze (691), Brass (696), and Black (693).
- Arm Assemblies are interchangeable between D-4550 and D-3550 Series Closers.



Closers

D-3550/D-3551 Series Surface Closers

COMPLETE CLOSERS

Application	D-3550/D-3551 Series	Price	Weight
Standard, Parallel Arm, Top Jamb	Std. w/PA Brkt	294	7 lbs
Long Rod Forearm (top jamb only)	L	294	7 lbs
Hold Open Arm (standard & top jamb)	H	320	7 lbs
Hold Open Parallel Arm	PH	320	7 lbs
Heavy Duty Arm (PA only)	EDA	320	9 lbs
Heavy Duty Arm w/ Hold Open (PA only)	H-EDA	362	9 lbs
Heavy Duty Arm w/ Stop (PA only)	S	354	9 lbs
Heavy Duty Arm w/ Compression Stop (PA only)	CS	492	9 lbs
Heavy Duty Arm w/ Hold Open & Stop (PA only)	HS	397	9 lbs
Heavy Duty Arm w/ Hold Open & Compression Stop (PA only)	HCS	526	9 lbs
Track Mounting (pull side only)	T	338	8 lbs
Track Mounting w/ Hold Open (pull side only)	HT	362	8 lbs
Track Compression Stop	TCS	362	8 lbs

Options		Price	
Delayed Action Cylinder Option	DA	30	
Sex Nuts (add 1 package per closer - 4 sex nuts per pkg)	SN	6	
Security Screws	SEC	64	
Special Rust Inhibitor	SRI	32	

CYLINDER ASSEMBLY SETS

Description	Assembly No.	Price	Weight
Cylinder Body and Cover, size 2-6	DB-3550	218	5 lbs
Cylinder Body and Cover, size 1-4	DB-3551	218	5 lbs
Cylinder Body and Cover with DA, size 2-6	DB-3550DA	249	5 lbs
Cylinder Body and Cover with DA, size 1-4	DB-3551DA	249	5 lbs

ARM ASSEMBLY SETS

Description	Assembly No.	Price	Weight
Standard Arm Set (Std, PA & Top Jamb)	A45-501	76	2 lbs
Standard Arm with Long Rod and Shoe Set (Top Jamb)	A45-501L	76	2 lbs
Standard Hold-Open Arm Set (Std & Top Jamb)	A45-501H	102	2 lbs
Standard Hold-Open Arm w/ Long Rod and Shoe Set	A45-501HL	102	2 lbs
Standard Hold-Open Arm w/ Long Rod and Shoe Set	A45-501HXL	102	2 lbs
Parallel Hold-Open Arm Set	A45-503H	102	2 lbs
Heavy Duty Parallel Arm Set	A45-505	102	4 lbs
Heavy Duty Parallel Arm Set w/ Hold-Open	A45-505H	144	4 lbs
Heavy Duty Parallel Arm Set w/ Stop	A45-505S	135	4 lbs
Heavy Duty Parallel Arm Set w/ Compression Stop	A45-505CS	274	4 lbs
Heavy Duty Parallel Arm Set w/ Hold-Open and Stop	A45-505HS	179	4 lbs
Heavy Duty Parallel Arm Set w/ Hold-Open and Comp Stop	A45-505HCS	308	4 lbs
Track Rail Arm and Track Set (pull side only)	A45-507T	130	3 lbs
Track Rail Arm and Hold-Open Track Set (pull side only)	A45-507HT	144	3 lbs
Track Compression Stop	A45-507TCS	144	3 lbs

NOTES

- Closers are available in the following painted finishes: Aluminum (689), Dark Bronze (695), Statuary Bronze (690), Bronze (691), Brass (696), and Black (693).
- Arm Assemblies are interchangeable between D-4550 and D-3550 Series Closers.



Closers

D-1610/D-1611 Series Surface Closers

COMPLETE CLOSERS - (Less Cover)

Application	D-1610/D-1611 Series	Price	Weight
Standard, Parallel Arm, Top Jamb	Std. w/PA Brkt	148	5 lbs
Long Rod Forearm (top jamb only)	L	148	5 lbs
Hold Open Arm (standard & top jamb)	H	161	5 lbs
Hold Open Parallel Arm	PH	161	5 lbs

Options		Price	Weight
Full Cover	FC	11	1 lb
Sex Nuts (add 1 package per closer - 4 sex nuts per pkg)	SN	6	
Security Screws	SEC	61	
Special Rust Inhibitor	SRI	30	

CYLINDER ASSEMBLY SETS

Description	Assembly No.	Price	Weight
Cylinder Body and Cover, size 2-5	DB-1610	112	4 lbs
Cylinder Body and Cover, size 1-4	DB-1611	112	4 lbs

ARM ASSEMBLY SETS

Description	Assembly No.	Price	Weight
Standard Arm Set (Std, PA & Top Jamb)	A16-401	36	1 lb
Standard Arm with Long Rod (Top Jamb)	A16-401L	36	1 lb
Standard Hold-Open Arm Set (Std & Top Jamb)	A16-401H	49	1 lb

FULL COVER SETS

Description	Assembly No.	Price	Weight
Full Cover	C-165	11	1 lb

NOTES

- Closers are shipped standard **Less Cover**.
- Aluminum (689), Dark Bronze (695), Statuary Bronze Closers are available in the following painted finishes: (690), Bronze (691), Brass (696), and Black (693).
- Closers are packed (6) per case.



Closers

CO-30/CO-50 Series Concealed Closers

CONCEALED IN-DOOR CLOSERS

Application	CO-50 Series	Price	Weight
Concealed In-Door Size 3	CO-53	287	5 lbs
Concealed In-Door Size 4	CO-54	287	5 lbs
Concealed In-Door Size 3 with Hold Open	CO-153	303	5 lbs
Concealed In-Door Size 4 with Hold Open	CO-154	303	5 lbs

OVERHEAD CONCEALED CLOSERS (Handed)

Application	CO-50 Series	Price	Weight
Overhead Concealed Size 5	CO-55	551	12 lbs
Overhead Concealed Size 6	CO-56	551	12 lbs
Overhead Concealed Size 5 with Hold Open	CO-155	563	12 lbs
Overhead Concealed Size 6 with Hold Open	CO-156	563	12 lbs

DOUBLE ACTING OVERHEAD CONCEALED CLOSERS (Side Loading)

Application		Door Opening		CO-30 Series	Price	Weight
Max Opening	Hold Open	Max Int	Max Ext			
105°	—	3'-0"	2'-6"	30-21S	348	10 lbs
90°	—	3'-0"	2'-6"	30-23S	348	10 lbs
105°	105°	3'-6"	3'-0"	30-30S	348	10 lbs
90°	—	3'-6"	3'-0"	30-31S	348	10 lbs
105°	90°	3'-6"	3'-0"	30-32S	348	10 lbs
105°	—	—	—	30-34S	348	10 lbs
105°	—	—	—	30-41S	356	10 lbs

NOTES

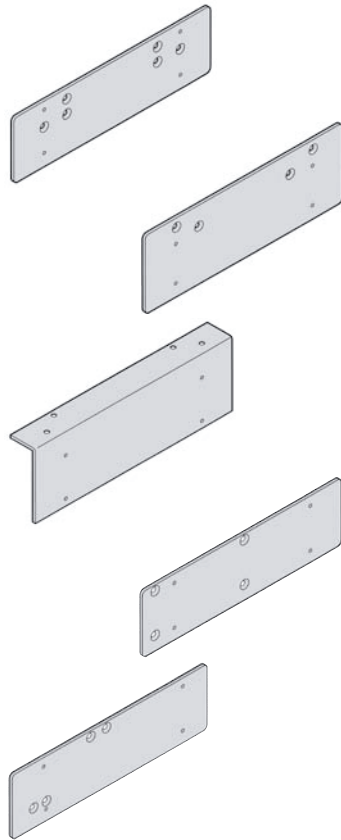
- Closers are available in Aluminum (689) painted finishes.
- Special Rust Inhibitor (SRI) for installations where a higher level of corrosive resistance is required.
Add \$32.00.

Closers

Mounting Accessories

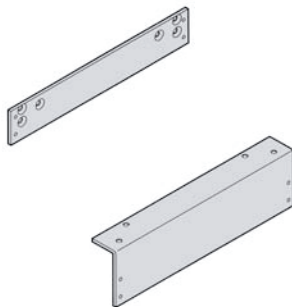
Description	Part No.	Price	Weight
-------------	----------	-------	--------

D-4550/D-4551 Cylinder Mounting Plates



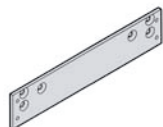
Drop Plate (Std., PA or TJ mount)	P45-180	41	4 lbs
Drop Plate (PA mount) Heavy Duty for use with a narrow top rail	P45-180D	41	4 lbs
Angle Bracket (push side mount)	P45-190	41	5 lbs
Adapter Plate for D4550 with Heavy Duty Arm Application to retrofit to LCN 4111 with Heavy Duty Arm Application	P45-4110	41	4 lbs
Adapter Plate for D4550 with Heavy Duty Arm Application to retrofit to LCN 4040 with Heavy Duty Arm Application	P45-4040	41	4 lbs

D-3550/D-3551 Cylinder Mounting Plates



Drop Plate (Std., PA or TJ mount)	P35-180	41	3 lbs
Angle Bracket (push side mount)	P35-190	41	4 lbs

D-1650/D-1651 Cylinder Mounting Plates

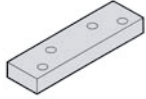


Drop Plate (Std., PA or TJ mount)	P16-180	41	2 lbs
-----------------------------------	---------	----	-------

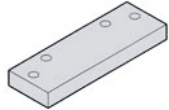
Mounting Accessories

Description	Part No.	Price	Weight
-------------	----------	-------	--------

D-4550/D-3550 Arm Mounting Accessories



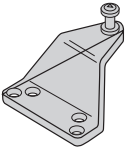
Spacer Block for mounting PA Bracket on Rabbet	P45-110	16	1 lb
--	---------	----	------



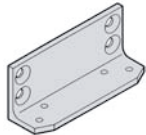
Spacer Block for mounting HD Arms on Rabbet	P45HD-110	17	1 lb
---	-----------	----	------



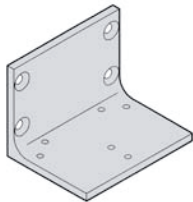
Angle Bracket for Shoe Support on HD Arms	P45HD-112	17	05 lbs
---	-----------	----	--------



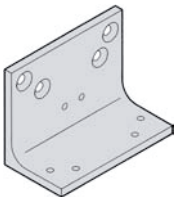
Extra-Clearance Offset Soffit Plate Bracket	P45-113	25	1 lb
---	---------	----	------



Angle Bracket for mounting PA Bracket on Flush Transom	P45-114	20	1 lb
--	---------	----	------



Angle Bracket for mounting HD Arms on Flush Transom	P45HD-114	26	2 lbs
---	-----------	----	-------



Angle Bracket for mounting HD Arms on Flush Transom with Over Head Stop Applications	P45HD-114-1	26	2 lbs
--	-------------	----	-------



Closers

Components

COVERS

4550/3550 SERIES

	Part No.	Price
4550 Series Cover	C-455	13
4550 Series Metal Cover (brushed, stainless steel standard)	MC-455	33
3550 Series Cover	C-355	13

ARM COMPONENTS

4550/3550 SERIES - Standard (STD, PA & TJ Mount)

	Part No.	Price
Parallel Arm Shoe	501-11	9
Standard Main Arm	501-22	21
Standard Fore Arm	501-44	14
Standard Arm Adjusting Rod	501-66	12
Standard Arm Long Adjusting Rod	501L-66	12
Standard Arm Shoe	501-88	7
Elbow Connection Machine Screw	501-32	2
Elbow Connection Washer	501-10	2
Adjusting Rod Check Nut	501-36	2
Standard Shoe Hinge Pin	501-35	2
Standard Shoe Machine Screw	501-38	2
Threaded Stop Insert	505-117	29
Compression Stop Insert	501-39	63



Closers

Notes



Stanley Security Solutions, Inc.
6161 East 75th Street, Indianapolis, Indiana 46250

©2012 Stanley Security Solutions, Inc. • www.stanleysecuritysolutions.com

Phone: (800) 711-6814 • Fax: (877) 835-1030

5/12
17678-S3