

Sargent

Sell Sheets 2017

The NEW Standard In Healthcare



BHW Trim
Behavioral Health Series®

The NEW Standard in Healthcare

Today, healthcare facilities are transforming the patient experience, combining safety and reliability with aesthetics. SARGENT's innovative BHW trim integrates the lever and escutcheon, creating a superior design that is safer, easy to use and aesthetically pleasing. Its streamlined look and feel brings an elegant style to the most demanding environments and fits perfectly in modern behavioral health areas.



Features

- Aesthetic, modern design with integrated lever and escutcheon
- Uses the ANSI/BHMA Grade 1 8200 Series mortise lock
- Available in 37 functions including Asylum/Institutional (ANSI F30), Institutional Privacy (ANSI F26) and Privacy (ANSI F22, F19 and F02) as well as electrified options
- Uses standard mortise prep, with only 2 additional holes
- Microshield® antimicrobial coating option available
- Matching behavioral health thumbturn available
- UL Listed for use with Fire Rated doors
- ADA Compliant
- Patented design and construction

Applications

- Behavioral Health Units
- Patient Room Doors
- De-escalation Rooms
- Psychiatric Facilities
- Assisted Living Facilities

Benefits

- **Beautiful:** tapered surfaces and escutcheon shape lend a modern design aesthetic to healthcare facilities
- **Strong and durable:** lock exceeds ANSI/BHMA Grade 1 requirements to withstand abusive environments
- **Versatile:** 37 functions, including electrified and behavioral health specific; can be used on many opening types
- **Minimizes risk:** helps contribute to patient safety with unique design; available with MicroShield® antimicrobial coating
- **Easy to use:** intuitive operation of lever provides easy access for staff and patients

Other Products in Specialty Hardware

- BHL Trim for the 8200 Series
- BHD Knob for use with 7800 Series and 9200 Series
- Push/Pull Paddle Trim (ALP) for the 8200 Series and HP bored lock



BHL Trim



BHD Knob



ALP Trim

NOTE: Although these products are better designed for behavioral health applications than traditional trim, they do not eliminate the risk that an object can be affixed to, or around them.

SARGENT Manufacturing Company
For more information call 800-727-5477
or visit us online at www.sargentlock.com

Copyright © 2015, 2017, Sargent Manufacturing Company, an ASSA ABLOY Group company. All rights reserved. Reproduction in whole or in part without the express written permission of Sargent Manufacturing Company is prohibited. Patent pending and/or patent www.assaabloydss.com/patents.

ASSA ABLOY is the global leader in door opening solutions, dedicated to satisfying end-user needs for security, safety and convenience.



MicroShield®

As part of their promise to provide innovative solutions to their customers, certain ASSA ABLOY Group brands offer the MicroShield® technology, a silver-based antimicrobial coating designed to inhibit the growth of bacteria.

MicroShield® is a registered trademark of Yale Security Inc., an ASSA ABLOY Group company.

Extreme Durability



FM8700 Series Surface Vertical Rod Exit Device

Robust and Reliable

The FM8700 Series has a two point latching system, designed to protect individuals in extreme weather situations. Certified to secure community shelters during tornado events, the FM8700 Series has a robust design utilizing extra-heavy duty steel components that secure the door to the frame. Plus, its available with a large number of options for maximum flexibility.



Features

- Two point latching system
- Automatically activated latch bolts when door is closed
- Through-bolts on door for solid attachment
- Accommodates single doors sized 3'0" x 7'0" up to 4'0" x 8'0"; pair of doors sized 6'0" x 7'0" up to 8'0" x 8'0"
- Available in 10 functions with a variety of trim styles and finishes
- UL Classified in accordance with FEMA P-320 (2014), FEMA P-361 (2015) and ICC 500 (2014)
- ANSI/BHMA A156.3 Grade 1 certified
- UL Listed for use on panic (UL 305) and fire-rated (UL 10C) exit devices
- Part of a complete ASSA ABLOY tornado and hurricane shelter solution utilizing Ceco StormPro® Series and Curries StormPro® Series doors and frames and McKinney® StormPro® hinges

Applications

- Community Shelters
- Safe Rooms
- Corporate Campuses
- Schools
- Healthcare Facilities
- Government Facilities

Benefits

- **Strong:** Specially machined rail and internal components for a sturdier and robust design
- **Flexible:** Multiple functions available including electrified
- **Peace of Mind:** Surface mounted device makes for a simple door prep and a quick and easy installation
- **Aesthetically Pleasing:** Available with a wide variety of standard and decorative levers



SARGENT Manufacturing Company
For more information call 800-727-5477
or visit us online at www.sargentlock.com

Copyright © 2017, Sargent Manufacturing Company, an ASSA ABLOY Group company. All rights reserved. Reproduction in whole or in part without the express written permission of Sargent Manufacturing Company is prohibited.

ASSA ABLOY is the global leader in door opening solutions, dedicated to satisfying end-user needs for security, safety and convenience.

Shelter and Safety from the Storm



FM6100 Series Multi-Point Auto Deadlocking System for Storm Shutters



Multi-Point Auto Deadlocking Shutter System

The SARGENT FM6100 Series multi-point auto deadlocking system for shutters helps secure community shelters and safe rooms by withstanding severe wind speeds and flying debris. Sturdy, concealed heavy-duty steel components firmly fasten the shutter to the frame in multiple locations. All latch points - top, bottom and center - engage when the shutter is closed, strengthening the opening and helping protect lives during a windstorm event.



Features

- Multiple latch points retract with a single motion at lever and project automatically when the shutter is closed
- Inswing applications
- Concealed vertical rods for additional security
- Available as classroom and passage functions for doors; inside passage function x blank plate for shutters
- Available for shutters sized 3'6" x 3'6" up to 4' x 6'8"
- Available with Studio Collection levers and optional MicroShield® antimicrobial coating
- Seven Year Warranty

Benefits

- Strong: Extra-heavy duty steel components, through bolts on shutter, and heavy duty escutcheons help withstand severe wind speeds and flying debris
- Aesthetically-pleasing: clean design with concealed vertical rods and Studio Collection decorative levers enhance any decor
- Code Compliant: UL Listed for FEMA P361 (2015) and P320 (2014) and ICC 500-2014 applications, complies with NFPA 80 and NFPA 101 life-safety requirements and listed for usage on up to 3-hour UL10B or 10C fire rated openings
- Integrated Assembly: Part of a complete ASSA ABLOY windstorm solution system with CECO DOOR StormPro® 361 and CURRIES Storm Pro® 361 shutters and frames and McKINNEY StormPro® hinges

Applications:

- Community shelters and safe rooms
- Corporate and educational facilities
- Healthcare and government campuses
- 911 call stations, emergency operation centers, and fire/rescue/ambulance and police stations



For information call 800-727-5477 or visit us online at www.sargentlock.com

SARGENT Manufacturing Company
800-727-5477 • www.sargentlock.com

Copyright © 2017, Sargent Manufacturing Company, an ASSA ABLOY Group company. All rights reserved. Reproduction in whole or in part without the express written permission of Sargent Manufacturing Company is prohibited.

ASSA ABLOY is the global leader in door opening solutions, dedicated to satisfying end-user needs for security, safety and convenience.

SARGENT
ASSA ABLOY

Maximum Protection



FM7300 Series
Multi-Point Lock

Strong & Flexible

The FM7300 Series helps secure community shelters and safe rooms by withstanding tornado wind speeds and flying debris. Available in multiple function and trim combinations, the FM7300 Series offers the flexibility needed to accommodate a full range of door opening solutions including electronic access control with the reliability and durability needed for extreme conditions. Its unique center case adjustability feature simplifies installation and device adjustment.



Features

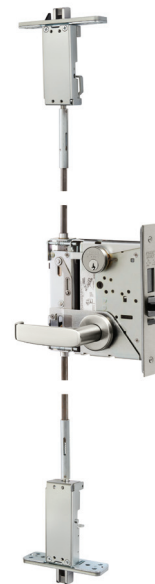
- Utilizes standard 8200 Series mortise lock, offering a full range of mechanical and electromechanical functions and options
- Three latch points project automatically; Fourth latch point with a single motion.
- Dogging option allows device to operate as standard mortise lock with a single latch point for everyday use
- Complies with ICC 500 (2014), FEMA P-320 (2014), and FEMA P-361 (2015) certification
- ANSI/BHMA A156.37 Grade 1 certified
- Fully Integrated as a complete ASSA ABLOY tornado windstorm solution utilizing Ceco StormPro® 361 and Curries StormPro® 361 doors and frames and McKinney StormPro® hinges
- Concealed vertical rods for additional security
- Available with access control options
- Inswing and outswing applications
- Concealed vertical assembly (rods, latches and cassette) pre-installed in door.
- Available for single doors sized 3'0" x 7'0" up to 4'0" x 8'0"; pair of doors sized 6'0" x 7'0" up to 8'0" x 8'0"
- Available with Studio Collection levers and optional MicroShield™ antimicrobial coating
- Seven year warranty

Applications

- Community shelters and safe rooms
- Corporate and educational facilities
- Healthcare and government campuses
- 911 call stations, emergency operation centers, and fire/rescue/ambulance and police stations

Benefits

- **Robust Design:** Utilizes proven 8200 Series mortise lock, heavy-duty steel components, and four latching points
- **Peace of Mind:** Indicator option provides visual confirmation of security
- **Easy Operation:** Vertical latch dogging feature available for easier daily use; top and bottom rods are adjustable from the center case while the door is hung
- **Flexible:** Multiple functions available including classroom, electrified and access control applications
- **Quicker Installation:** Reversible strikes make installation easier and accommodate variability in opening and floor conditions
- **Aesthetically Pleasing:** Sectional trim with wide variety of decorative levers, rose and trim combinations



SARGENT Manufacturing Company
For more information call 800-727-5477
or visit us online at www.sargentlock.com

Copyright © 2017, Sargent Manufacturing Company, an ASSA ABLOY Group company. All rights reserved. Reproduction in whole or in part without the express written permission of Sargent Manufacturing Company is prohibited.

ASSA ABLOY is the global leader in door opening solutions, dedicated to satisfying end-user needs for security, safety and convenience.

A Perfect 10!



10 Line Cylindrical Locks



Impressive strength and durability.

The SARGENT 10 Line cylindrical lock provides all that and more. With the strength to handle whatever you throw at it, the 10 Line offers the flexibility to accommodate storerooms to classrooms to access control applications. Backed by a seven-year warranty, this lock is all things to all doors. Impressive!



Features

- ANSI/BHMA Grade 1 certified for cycle and strength requirements. Exceeds cycle testing standards by nine times with 9.6 million cycles and torque resistance by 1.5 times.
- UL-cUL listed for 3 hour fire doors and windstorm applications
- Freewheeling trim optional
- Available in 21 different functions, including classroom security and electromechanical options for access control applications
- Offered in 12 architectural grade finishes to match any décor
- Integrates into most existing facility key systems including SARGENT security systems (Degree, Signature, KESO, and XC; also accepts Schlage® and Medeco LFIC)
- 6 lever designs, 2 rose designs offered
- 7 Year Warranty

Applications

- Offices
- Schools/Universities
- Hospitals
- Manufacturing facilities

Benefits

Strength & Security: Heavy-duty design far exceeds industry testing standards. Security features provide additional resistance against vandalism and unauthorized entry

Flexibility: Accommodates retrofit applications and a variety of door preparations. Easy to connect to other electrified products.

Efficient Installation: Convenient installation diagram and pre-assemble components makes for quick, easy installation in less than 1 minute.

Inventory Management: Non handed lever designs provide for efficient warehousing.



ASSA ABLOY is the global leader in door opening solutions, dedicated to satisfying end-user needs for security, safety and convenience

SARGENT Manufacturing Company
800-727-5477 • www.sargentlock.com

Multiple Points of View



7000 Series Multi-Point Lock

Strong and Worry Free.

Looking for a flexible and reliable multi-point lock? The 7000 Series multi-point concealed vertical rod lock provides just what you're looking for. Ideal for a wide variety of applications where exit devices are not required, the 7000 Series offers 36 functions and use on multiple door types. Plus its heavy duty construction provides strength and durability which makes it perfect for abusive environments like commercial, educational and healthcare facilities.



Features

- Available with 9 functions for inside trim and 11 outside functions
- For use on all door types (metal, aluminum, wood, narrow stile)
- Single or double door applications
- Available with Studio Collection decorative levers
- UL Listed for wood and metal fire rated doors
- Option available for no bottom rod (NB)
- Available with electrified trim, SARGENT Harmony™ Integrated Wiegand access control and electric latch retraction (ELR) options
- Supports electrified dogging with ELR option
- UL listed for Windstorm and Hurricane metal door applications with WS and HC options: ZHEM.R21744

Applications

- Pairs of doors that do not require panic devices
- When flush bolts are not permitted in:
 - Assembly
 - Education
 - Healthcare
 - Hazard Occupancy
- Single doors that do not require a panic device with power operators

ASSA ABLOY is the global leader in door opening solutions, dedicated to satisfying end-user needs for security, safety and convenience

SARGENT Manufacturing Company
800-727-5477 • www.sargentlock.com

Benefits

- Flexible: 36 function combinations including classroom security and latch hold back for multiple door types
- Versatile: More choices for electrified openings including ELR and Harmony™ Integrated Wiegand access control options
- Reduced maintenance: when used in place of automatic flushbolts and coordinators, fewer moving parts and virtually maintenance free
- Accessible: when used without the bottom rod, obstacles are eliminated for equipment and wheel chairs
- Aesthetically-pleasing: clean, simple design with concealed rods can be used with decorative Studio Collection levers



Inner Strength, Redefined!

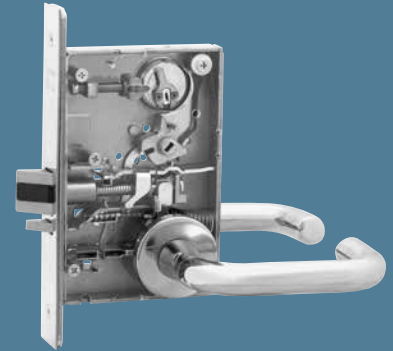


8200 Series Mortise Lock



Raising the bar of excellence.

The 8200 Series mortise lock is designed and constructed with the highest quality components to provide maximum security, performance, and durability, making it the strongest lock on the block. Considered the industry benchmark for all mortise locks on the market today, the robust lock is an attractive solution with a multitude of lever and escutcheon styles available.



Features

- ANSI/BHMA Grade 1 certified for cycle and strength requirements
- UL-cUL listed for 3 hour fire doors and windstorm applications
- Thru-bolted lever trim and strengthened cylinder retainer
- Available with security key systems (Degree, Signature, KESO, and XC)
- Available in 58 different functions, including electromechanical, security (freewheeling, security escutcheon, anti-vandal pull trim) and monitoring
- 6 lever designs, 2 roses/escutcheons designs, and 14 architectural finishes offered
- Available with behavioral health trim
- 10-year warranty
- Patented design and construction

Benefits

Strength & Reliability: Far exceeds independently verified testing, making it the strongest and most durable mortise lock in the industry. Verified for over 14 million cycles.

Security: Several security features provide additional resistance against vandalism and unauthorized entry.

Flexibility & Aesthetics: Aesthetic design combined with a variety of functions, lever designs and architectural finishes match a wide range of styles and make it ideal for all types of applications (e.g. offices, hospitals, behavioral health environments, schools/universities).

Ease of Install and Maintenance: Multifunctional lockbody makes switching functions on-site easy and reduces inventory requirements.



MicroShield®

As part of their promise to provide innovative solutions to their customers, certain ASSA ABLOY Group brands offer the MicroShield® technology, registered with the EPA and FDA. MicroShield® is a silver-based antimicrobial coating designed to inhibit the growth of bacteria.

MicroShield® is a registered trademark of Yale Security Inc., an ASSA ABLOY Group company.

ASSA ABLOY is the global leader in door opening solutions, dedicated to satisfying end-user needs for security, safety and convenience

SARGENT Manufacturing Company
800-727-5477 • www.sargentlock.com

Push The Envelope



Push/Pull Trim



Push/Pull Solution

You need it all: heavy-duty push/pull hardware that is flexible, easy to use and aesthetically pleasing. SARGENT push/pull trim provides all that and more. Appropriate for behavioral healthcare settings, beautiful enough for healing environments and durable enough for demanding classroom doors, this trim offers multiple mounting options and easy operation, even when your hands aren't free. So when the building requirements are tough, push back with SARGENT.



Mortise Lock Features

- Based on proven SARGENT 8200 Mortise Lock
- Uses standard mortise prep
- Available in 42 functions including classroom security functions
- Electrified options provide connection to access control
- UL Listed for use with Fire Rated doors
- ANSI/BHMA Grade 1

Bored Lock Features

- Uses SARGENT HP Bored Lock
- Available in 2-3/4", 5" and 7" backsets
- Passage and privacy functions
- UL Listed for use with Fire Rated doors
- ANSI/BHMA Grade 1

Trim Features

- Non-handed
- MicroShield® antimicrobial finish option
- "Push" and "pull" identification available for paddles
- Available in full range of finishes including stainless steel
- ADA Compliant



ASSA ABLOY is the global leader in door opening solutions, dedicated to satisfying end-user needs for security, safety and convenience

SARGENT Manufacturing Company
800-727-5477 • www.sargentlock.com

Benefits

- Beautiful: sleek, aesthetic form aligns with evidence-based design approach to healing environments and modern learning environments
- Strong and durable: grade 1 locks hold up to abusive environments
- Safety: ligature-resistant features for behavioral health units and rehabilitation facilities
- Flexible: multiple mounting orientations allow customized openings
- Easy Open: paddle shape and location create target for door activation without using hands, and push/pull motion is easy for small hands to operate

Applications

Healthcare

- Behavioral Health Units
- Patient Room Doors
- Assisted Living Facilities
- De-escalation Rooms
- Psychiatric Facilities

Education

- Classrooms
- Labs

Easily field-configurable in several mounting options and available with "push" and "pull" identification on paddles



U.S. Patent No. 646,548S; 646,549S



MicroShield®

As part of their promise to provide innovative solutions to their customers, certain ASSA ABLOY Group brands offer the MicroShield® technology, a silver-based antimicrobial coating designed to inhibit the growth of bacteria.

MicroShield® is a registered trademark of Yale Security Inc., an ASSA ABLOY Group company.

Security Comes From Strength



11 Line Bored Lock



*Office Security
Function with Indicator*



The right combination of freedom and security

SARGENT designed the 11 Line to meet the demanding, ever-changing requirements of government and military facilities. The unique T-Zone construction easily exceeds ANSI/BHMA Grade 1 requirements for torque and cycle testing, ensuring durability in high-traffic applications. A single lock body and wide variety of functions and trim provides flexibility and ease of management to meet needs throughout the base or building. Durable, flexible, reliable—for government and military facilities, this lock is ready to serve.

Applications

Barracks • Maintenance Shops • Medical & Dental Clinics
DOD Schools • HQ/Admin facilities



11 Line Bored Locks



Features

- 18 functions available, including many functions are field changeable requiring no additional parts
- Integrates into most existing facility's key systems - accepts SARGENT key systems including Degree® and Signature; also accepts SFIC and Schlage® and Medeco® LFIC
- Fits standard 161 door prep and is non-handed
- Simple cylinder removal provides easy change outs
- Made from 68% post-consumer recycled content as per LEED MR credit 4
- Available in 13 hardware finishes and Microshield® antimicrobial coating
- 10-year limited warranty

Benefits

- **Durable and Reliable:** Independently-verified cycle testing proves the 11 Line will last the lifetime of the facility. No through bolts or surface screws to be installed improperly or forgotten; T-Zone construction prevents the lock from twisting
- **Flexible:** Integrates with numerous key systems and utilizes one lockbody for multiple functions, simplifying facility maintenance
- **Lower Cost of Ownership:** Fewer inventoried parts combined with a high number of opening cycles results in less time and frequency for maintenance and reduced overall expenses
- **Safe and Secure:** Torque resistant construction provides ability to withstand tough environments to keep occupants and property safe and secure
- **Sustainable:** Contributes to your sustainability efforts - fewer lock replacements due to long life and high post-consumer recycled content
- **Healthy Environment:** Microshield® coating available; supplements your cleaning protocol for a healthier environment for staff and the public

Durability and Cycle Testing

- Withstands more than **TWO TIMES** ANSI/ BHMA A156.2 Grade 1 torque force on a locked lever
- T-Zone lock technology tested to **15 times** the standard in ANSI/BHMA A156.2 Grade 1 cycle testing.
- **15 MILLION cycles equals** over 55 years of opening life in many facilities!



Security Continuum

Using a combination of the 7, 10, and 11 Line locks, each opening can have the right level of strength, durability and flexibility. This floor plan shows how the combination of these locks secure the diverse openings in a government or military facility all with the same key system!



SARGENT Manufacturing Company
For more information call 800-727-5477
or visit us online at www.sargentlock.com

Copyright © 2016, Sargent Manufacturing Company, an ASSA ABLOY Group company. All rights reserved. Reproduction in whole or in part without the express written permission of Sargent Manufacturing Company is prohibited.

90833 5/16



MicroShield®

As part of their promise to provide innovative solutions to their customers, certain ASSA ABLOY Group brands offer the MicroShield® technology, registered with the EPA and FDA. MicroShield® is a silver-based antimicrobial coating designed to inhibit the growth of bacteria. MicroShield® is a registered trademark of Yale Security Inc., an ASSA ABLOY Group company.

ASSA ABLOY is the global leader in door opening solutions, dedicated to satisfying end-user needs for security, safety and convenience

Lean Packaging



More Value Less Waste

Lean packaging is a cost effective and eco-friendly means of protecting and shipping hardware. This new, innovative packaging is designed with pre-installed hardware in mind.



Who is this for?

Designed to eliminate waste and improve productivity, lean packaging is a perfect fit for distributors providing pre-installed hardware.

Benefits

- Reduces waste: Reduces packaging waste by up to 20%
- Saves time: Requires 25% less time to unpack hardware
- Environmentally friendly: All packaging is made from 100% post-consumer fiber
- Minimizes mistakes: Each lock is shipped in specially designed "sleeve" packaging with unique compartments, reducing the chance of missing parts
- Efficient: Packaging is easy to open, check-in and handle; improves productivity of the pre-installed hardware process

Availability and ordering information

- Available for bored, mortise and tubular locks
- Minimum order quantity is 50 locks
- Configured as Lean Assembly Packs™ or Lean Project Pallets™
 - To order Lean Assembly Packs, use "LAP" as a prefix
 - Minimum order quantity is 50 locks
 - 5 locks per pack
 - To order a Lean Project Pallet, use "LPP" as a prefix
 - Minimum order quantity is 50 locks
 - 25 "sleeves" per row
 - No outer carton, shrink wrapped to keep contents contained and protected
- No additional charge

Available with the following products:

- Bored Locks - 7 Line, 10 Line, and 11 Line
- Mortise Locks - 7900 Series, 8200 Series, and 9200 Series with standard, roseless and Studio Collection decorative trim
- Tubular Locks - DL Series and RDL Series

Product exclusions:

- Bored Locks – electromechanical locks
- Mortise Locks – M9200 Series, electromechanical locks, knob locks, free wheeling option
 - Trim – BHL, BHW, ALP, KS, LS
 - Rose – E, L, SL, BH

Lean Assembly Pack



Lean Project Pallet



For more information, contact your local ASSA ABLOY Door Security Solutions salesperson.

ASSA ABLOY is the global leader in door opening solutions, dedicated to satisfying end-user needs for security, safety and convenience

SARGENT Manufacturing Company
800-727-5477 • www.sargentlock.com

Copyright © 2015, Sargent Manufacturing Company, an ASSA ABLOY Group company. All rights reserved. Reproduction in whole or in part without the express written permission of Sargent Manufacturing Company is prohibited.

Mobile Access



SE LP10 Integrated Wiegand Access Control Lock

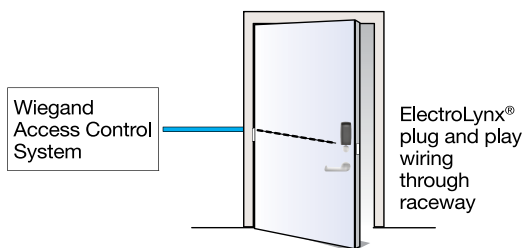


Flexibility and Advanced Security

The SARGENT SE LP10 brings a new level of flexibility to our Integrated Wiegand access control solutions. Featuring multiCLASS SE® Technology from HID Global®, the SE LP10 is ideal for mixed credential environments and enables easy migration to higher security credentials and mobile access.



Features	Benefits
multiCLASS SE® Technology from HID Global®	<ul style="list-style-type: none"> Provides heightened security Supports: <ul style="list-style-type: none"> Multiple credential technologies, offering easy migration to higher security credentials or consolidation of mixed credentials HID Mobile Access® powered by Seos®, for both iOS® and Android™ devices
Open architecture platform	Compatibility with all popular access control systems
Integrated design incorporates all access control components, including card reader, door position switch, and request to exit monitoring sensors	Significantly reduces installation time
Intelligent power management	Reduces reader power consumption by as much as 75%
SARGENT ANSI/BHMA Grade 1 hardware, available in: 10 Line Cylindrical Lock, 8200 Series Mortise Lock, and 80 Series Exit Device	Industry leading Grade 1 hardware offers the highest degree of physical security available in access control locks; flexibility to support a variety of openings
Direct Wiegand output	Eliminates the need for an interface panel
Lockdown capable	Ability to secure areas immediately from central security system
Provided with pre-terminated ElectroLynx® connectors	Reduced installation time and costs; improved reliability
Reader housing available in two colors: two-tone gray (pictured) or all black	Flexibility to match the look of your facility
Mortise locks feature EcoFlex™ technology	<ul style="list-style-type: none"> Reduces energy consumption up to 96%, as certified by GreenCircle Field configurable to fail-safe or fail-secure Operates from 12-24VDC, offering greater flexibility in system design Innovative actuator design provides superior reliability



ASSA ABLOY is the global leader in door opening solutions, dedicated to satisfying end-user needs for security, safety and convenience

SARGENT Manufacturing Company
800-727-5477 • www.sargentlock.com

Copyright © 2013 - 2015 Sargent Manufacturing Company, an ASSA ABLOY Group company. All rights reserved. Reproduction in whole or in part without the express written permission of Sargent Manufacturing Company is prohibited.

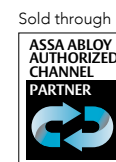
HID, iCLASS SE, iCLASS, multiCLASS, SE, Secure Identity Object, and SIO-Enabled are trademarks or registered trademarks of HID Global in the U.S. and/or other countries.

Credential Support

- 2.4 GHz credentials:
 - Secure Identity Object™ (SIO) on Mobile IDs (Bluetooth Smart)
- 13.56 MHz credentials:
 - Secure Identity Object™ (SIO) on iCLASS Seos, iCLASS SE/SR, MIFARE DESFire EV1 and MIFARE Classic (on by default)
 - Standard iCLASS Access Control Application, ISO14443A (MIFARE) CSN, ISO14443B CSN, and ISO15693 CSN
 - ISO14443A/B (PIV-compatible Transparent FASC-N read) available with SE LP10-F
 - NFC-enabled mobile phones
- 125 kHz credentials:
 - HID Prox®, AWID, EM4102

Specifications and System Requirements

- Reader: 12VDC
 - Mortise locks operate from 12-24VDC; cylindrical locks and exit devices available as 12 or 24VDC
 - Mortise locks field selectable to fail-safe or fail-secure; must specify fail-safe or fail-secure for cylindrical locks and exit devices
- Patent pending



Mobile Access



SE LP10 Integrated Wiegand Access Control Lock

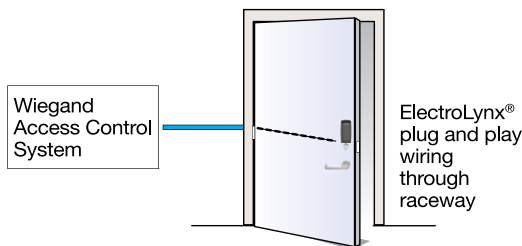


Flexibility and Advanced Security

The SARGENT SE LP10 brings a new level of flexibility to our Integrated Wiegand access control solutions. Featuring multiCLASS SE® Technology from HID Global®, the SE LP10 is ideal for mixed credential environments and enables easy migration to higher security credentials and mobile access.



Features	Benefits
multiCLASS SE® Technology from HID Global®	<ul style="list-style-type: none"> Provides heightened security Supports: <ul style="list-style-type: none"> Multiple credential technologies, offering easy migration to higher security credentials or consolidation of mixed credentials HID Mobile Access® powered by Seos®, for both iOS® and Android™ devices
Open architecture platform	Compatibility with all popular access control systems
Integrated design incorporates all access control components, including card reader, door position switch, and request to exit monitoring sensors	Significantly reduces installation time
Intelligent power management	Reduces reader power consumption by as much as 75%
SARGENT ANSI/BHMA Grade 1 hardware, available in: 10 Line Cylindrical Lock, 8200 Series Mortise Lock, and 80 Series Exit Device	Industry leading Grade 1 hardware offers the highest degree of physical security available in access control locks; flexibility to support a variety of openings
Direct Wiegand output	Eliminates the need for an interface panel
Lockdown capable	Ability to secure areas immediately from central security system
Provided with pre-terminated ElectroLynx® connectors	Reduced installation time and costs; improved reliability
Reader housing available in two colors: two-tone gray (pictured) or all black	Flexibility to match the look of your facility
Mortise locks feature EcoFlex™ technology	<ul style="list-style-type: none"> Reduces energy consumption up to 96%, as certified by GreenCircle Field configurable to fail-safe or fail-secure Operates from 12-24VDC, offering greater flexibility in system design Innovative actuator design provides superior reliability



ASSA ABLOY is the global leader in door opening solutions, dedicated to satisfying end-user needs for security, safety and convenience

SARGENT Manufacturing Company
800-727-5477 • www.sargentlock.com

Copyright © 2013 - 2015 Sargent Manufacturing Company, an ASSA ABLOY Group company. All rights reserved. Reproduction in whole or in part without the express written permission of Sargent Manufacturing Company is prohibited.

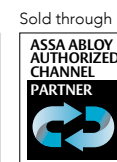
HID, iCLASS SE, iCLASS, multiCLASS, SE, Secure Identity Object, and SIO-Enabled are trademarks or registered trademarks of HID Global in the U.S. and/or other countries.

Credential Support

- 2.4 GHz credentials:
 - Secure Identity Object™ (SIO) on Mobile IDs (Bluetooth Smart)
- 13.56 MHz credentials:
 - Secure Identity Object™ (SIO) on iCLASS Seos, iCLASS SE/SR, MIFARE DESFire EV1 and MIFARE Classic (on by default)
 - Standard iCLASS Access Control Application, ISO14443A (MIFARE) CSN, ISO14443B CSN, and ISO15693 CSN
 - ISO14443A/B (PIV-compatible Transparent FASC-N read) available with SE LP10-F
 - NFC-enabled mobile phones
- 125 kHz credentials:
 - HID Prox®, AWID, EM4102

Specifications and System Requirements

- Reader: 12VDC
 - Mortise locks operate from 12-24VDC; cylindrical locks and exit devices available as 12 or 24VDC
 - Mortise locks field selectable to fail-safe or fail-secure; must specify fail-safe or fail-secure for cylindrical locks and exit devices
- Patent pending



SARGENT

ASSA ABLOY

SARGENT Bored Locks: Secure Every Opening



ASSA ABLOY, the global leader
in door opening solutions

Versatile Locking Solutions for Any Environment

Facilities with varying security needs can be a challenge to secure. One size never fits all when it comes to safety and security; you need options. SARGENT bored locks offer the choices you need to provide the right level of security at each door opening. And these locks never compromise on durability, strength, or style.



11 Line

This lock sets a higher standard for ANSI/BHMA Grade 1 bored-in locks with our unique T-Zone® construction. Designed for the highest traffic areas at a facility, the 11 Line provides unequalled strength and durability.



10 Line

Your 'go-to' option, this cylindrical lock exceeds ANSI/BHMA Grade 1 standards and offers a multitude of functions to handle any application.



7 Line

The 7 Line is designed for interior and exterior standard-duty Grade 2 applications.



11 Line

Bored Locks



BENEFITS

- **Durable and Reliable:** Independently-verified cycle testing proves the 11 Line will last the lifetime of the facility
- **Flexible:** Integrates with numerous key systems and utilizes one lockbody for multiple functions, simplifying facility maintenance
- **Lower Cost of Ownership:** Fewer inventoried parts combined with a high number of opening cycles results in less time and frequency for maintenance and reduced overall expenses
- **Safe and Secure:** Torque resistant construction provides ability to withstand tough environments to keep occupants and property safe and secure
- **Sustainable:** Contributes to your sustainability efforts - fewer lock replacements due to long life and high post-consumer recycled content

FEATURES

- 18 functions available, including Classroom Security; many functions are field changeable requiring no additional parts
- Integrates into most existing facility's key systems – accepts SARGENT key systems including patented Degree® and Signature; also accepts Best® SFIC and Schlage® and Medeco® LFIC
- Retrofits any standard cylindrical lock doorprep and is non handed
- Simple cylinder removal provides easy change outs
- Made from 68% post-consumer recycled content as per LEED MR credit 4
- Available in 13 architectural grade finishes and Microshield® antimicrobial coating
- 10 year limited warranty

DURABILITY AND CYCLE TESTING

- Withstands more than **TWO TIMES** ANSI/ BHMA A156.2 Grade 1 torque force on a locked lever
- T-Zone lock technology tested to **15 times** the standard in ANSI/BHMA A156.2 Grade 1 cycle testing
- **15 MILLION** cycles equals over 55 years of opening life in many facilities!

TYPICAL APPLICATIONS

- High traffic doors
- Areas subject to severe abuse
- Schools, hospitals, other public buildings
- Retrofit applications



10 Line

Bored Locks



BENEFITS

- **Strength & Durability:** Exceeds ANSI/BHMA Grade 1 requirements for cycle and torque resistance
- **Safety & Security:** Specialized functions allow for quick and secure lockdowns
- **Flexibility:** Accommodates retrofit applications and a variety of door preparations
- **Efficient Installation:** Pre-assembled components makes for quick, easy installation

FEATURES

- 21 different functions, including classroom security and electromechanical options
- Freewheeling and vandal resistant trim optional
- 7 year limited warranty
- 11 architectural grade finishes to match any décor with or without MicroShield® antimicrobial coating

TYPICAL APPLICATIONS

- Offices
- Schools / Universities
- Hospitals
- Manufacturing Facilities



BHMA[™]
CERTIFIED

7 Line

Bored Locks



BENEFITS

- **Reliable:** Exceeds ANSI/BHMA A156.2 Grade 2 cycle requirements
- **Flexible:** Ideal for many applications with 10 functions; fits modified 161 door preps

FEATURES

- 10 standard functions with special functions available
- Conveniently installs in one minute or less; user-friendly packaging and instructions
- Multiple security key systems available (Signature, XC, Keso and Keso F1)
- Internal through-bolts supply strength and stability without requiring additional door preparation
- 5 year limited warranty; no service required
- 11 architectural grade finishes and Microshield® antimicrobial coating

TYPICAL APPLICATIONS

- Medical Clinics
- Offices
- Public Buildings
- Hotels / Motels
- Government Facilities



Where To Use SARGENT Locks

OFFICE / WAREHOUSE EXAMPLE

-  11 Line
-  10 Line
-  7 Line
-  Exit Device



MEDICAL OFFICE BUILDING EXAMPLE

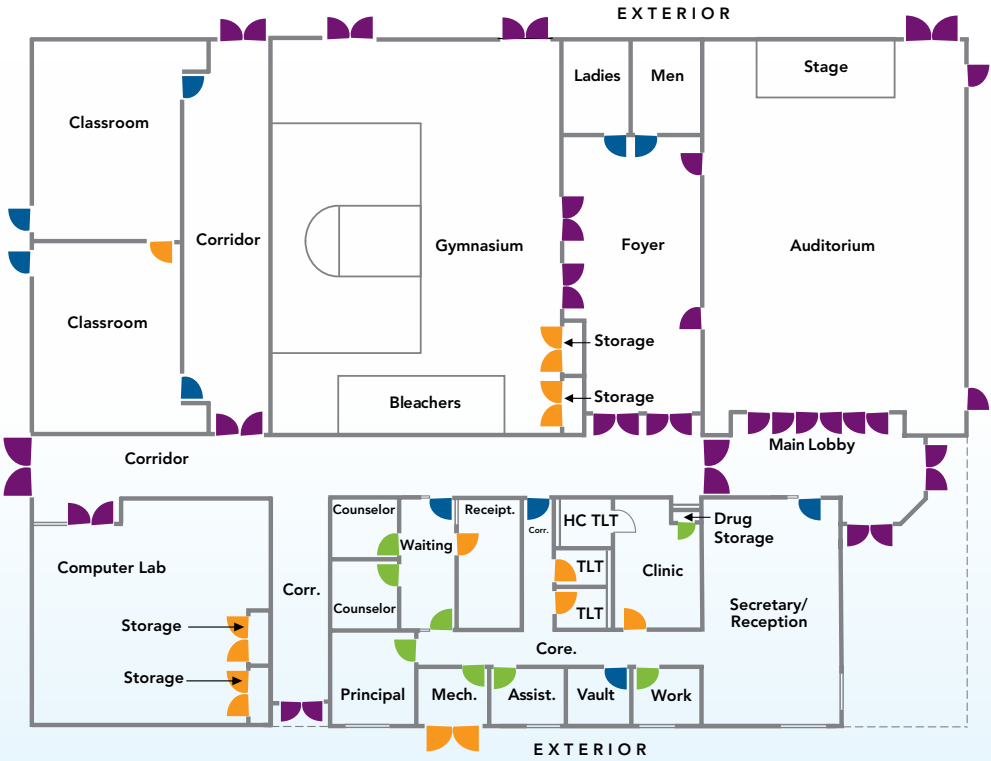
-  11 Line
-  10 Line
-  7 Line
-  Exit Device



Using a combination of the **11, 10, and 7 lines of locks**, each opening can have the right level of strength, durability to last, and flexibility. The floor plans below show how the combination of these locks secure the diverse openings in any type of facility.

SCHOOL EXAMPLE

- 11 Line
- 10 Line
- 7 Line
- Exit Device



For additional information, contact your
ASSA ABLOY Door Security Solutions
sales consultant, call SARGENT at
800-727-5477, or visit www.sargentlock.com

SARGENT
ASSA ABLOY

ASSA ABLOY is the global leader in door opening solutions, dedicated to satisfying end-user needs for security, safety and convenience.

SARGENT Manufacturing Company
For more information call 800-727-5477
or visit us online at www.sargentlock.com

Copyright © 2015 Sargent Manufacturing Company, an ASSA ABLOY Group company. All rights reserved. Reproduction in whole or in part without the express written permission of Sargent Manufacturing Company is prohibited.



MicroShield®

As part of their promise to provide innovative solutions to their customers, certain ASSA ABLOY Group brands offer the MicroShield® technology, registered with the EPA and FDA. MicroShield® is a silver-based antimicrobial coating designed to inhibit the growth of bacteria. MicroShield® is a registered trademark of Yale Security Inc., an ASSA ABLOY Group company.

In A Class By Itself

11 Line Bored Lock



*Classroom Security
Function with Indicator*



Experience is the best teacher

SARGENT designed the 11 Line to meet the demanding environments of educational facilities. The unique T-Zone construction easily exceeds ANSI/BHMA Grade 1 requirements for torque and cycle testing, ensuring durability in abusive applications. For flexibility and ease of management, a single lock body serves all functions. Plus, the 11 Line offers a classroom security function with unique locking indicator to help during panic situations. Durable, flexible, reliable—for educational facilities, this lock is in a class by itself.

Applications

Classrooms • Bathrooms • Administrative Offices



11 Line Bored Locks



Features

- 18 functions available, including Classroom Security; many functions are field changeable requiring no additional parts
- Integrates into most existing facility's key systems - accepts SARGENT key systems including Degree® and Signature; also accepts SFIC and Schlage® and Medeco® LFIC
- Fits standard 161 door prep and is non-handed
- Simple cylinder removal provides easy change outs
- Made from 68% post-consumer recycled content as per LEED MR credit 4
- Available in 13 hardware finishes and Microshield® antimicrobial coating
- 10-year limited warranty

Benefits

- **Durable and Reliable:** Independently-verified cycle testing proves the 11 Line will last the lifetime of the facility. No through bolts or surface screws to be installed improperly or forgotten; T-Zone construction prevents the lock from twisting
- **Flexible:** Integrates with numerous key systems and utilizes one lockbody for multiple functions, simplifying facility maintenance
- **Lower Cost of Ownership:** Fewer inventoried parts combined with a high number of opening cycles results in less time and frequency for maintenance and reduced overall expenses
- **Safe and Secure:** Torque resistant construction provides ability to withstand tough environments to keep occupants and property safe and secure
- **Sustainable:** Contributes to your sustainability efforts - fewer lock replacements due to long life and high post-consumer recycled content
- **Healthy Environment:** Microshield® coating available; supplements your cleaning protocol for a healthier environment for children and faculty

Durability and Cycle Testing

- Withstands more than **TWO TIMES** ANSI/ BHMA A156.2 Grade 1 torque force on a locked lever
- T-Zone lock technology tested to **15 times** the standard in ANSI/BHMA A156.2 Grade 1 cycle testing.
- **15 MILLION cycles equals** over 55 years of opening life in many facilities!



Security Continuum

Using a combination of the 7, 10, and 11 Line locks, each opening can have the right level of strength, durability and flexibility. This floor plan shows how the combination of these locks secure the diverse openings in a school all with the same key system!



SARGENT Manufacturing Company
For more information call 800-727-5477
or visit us online at www.sargentlock.com

Copyright © 2015 Sargent Manufacturing Company, an ASSA ABLOY Group company. All rights reserved. Reproduction in whole or in part without the express written permission of Sargent Manufacturing Company is prohibited.

90757A 9/15



MicroShield®

As part of their promise to provide innovative solutions to their customers, certain ASSA ABLOY Group brands offer the MicroShield® technology, registered with the EPA and FDA. MicroShield® is a silver-based antimicrobial coating designed to inhibit the growth of bacteria. MicroShield® is a registered trademark of Yale Security Inc., an ASSA ABLOY Group company.

ASSA ABLOY is the global leader in door opening solutions, dedicated to satisfying end-user needs for security, safety and convenience.

Long Lasting Security



11 Line Bored Locks



Built for demanding healthcare environments

We turn to healthcare facilities to extend our lifespans. Healthcare facilities turn to SARGENT for hardware with the durability for a lifetime of hard use. The 11 line's unique T-Zone construction delivers durability and strength that easily exceeds ANSI/BHMA Grade 1 requirements for torque and cycle testing. And facility maintenance is simplified with a single lock body that works for all functions. Durable, flexible, reliable-this is a lock designed for the life of your healthcare facility.

Applications

Laboratories • Public Restrooms • Offices



11 Line Bored Locks



Features

- 18 functions available, including Hospital Privacy; many functions are field changeable requiring no additional parts
- Integrates into most existing facility's key systems - accepts SARGENT key systems including Degree® and Signature; also accepts SFIC and Schlage® and Medeco® LFIC
- Fits standard 161 door prep and is non-handed
- Simple cylinder removal provides easy change outs
- Made from 68% post-consumer recycled content as per LEED MR credit 4
- Available in 13 hardware finishes and Microshield® antimicrobial coating
- 10-year limited warranty

Benefits

- **Durable and Reliable:** Independently-verified cycle testing proves the 11 Line will last the lifetime of the facility. No through bolts or surface screws to be installed improperly or forgotten; T-Zone construction prevents the lock from twisting
- **Flexible:** Integrates with numerous key systems and utilizes one lockbody for multiple functions, simplifying facility maintenance
- **Lower Cost of Ownership:** Fewer inventoried parts combined with a high number of opening cycles results in less time and frequency for maintenance and reduced overall expense
- **Safe and Secure:** Torque resistant construction provides ability to withstand tough environments like healthcare facilities, keeping occupants and property safe and secure.
- **Sustainable:** Contributes to your sustainability efforts - fewer lock replacements due to long life and high post-consumer recycled content
- **Healthy Environment:** Microshield® coating available; supplements your cleaning protocol for a healthier environment to keep germs at bay

Durability and Cycle Testing

- Withstands more than **TWO TIMES** ANSI/ BHMA A156.2 Grade 1 torque force on a locked lever
- T-Zone lock technology tested to **15 times** the standard in ANSI/BHMA A156.2 Grade 1 cycle testing.
- **15 MILLION cycles** equals over 55 years of opening life in many facilities!



Security Continuum

Using a combination of the 7, 10, and 11 Line locks, each opening can have the right level strength, durability and flexibility. This floor plan shows how the combination of these locks secure the diverse openings in a healthcare facility all with the same key system!



SARGENT Manufacturing Company
For more information call 800-727-5477
or visit us online at www.sargentlock.com

Copyright © 2015 Sargent Manufacturing Company, an ASSA ABLOY Group company. All rights reserved. Reproduction in whole or in part without the express written permission of Sargent Manufacturing Company is prohibited.

90731 9/15



MicroShield®

As part of their promise to provide innovative solutions to their customers, certain ASSA ABLOY Group brands offer the MicroShield® technology, registered with the EPA and FDA. MicroShield® is a silver-based antimicrobial coating designed to inhibit the growth of bacteria. MicroShield® is a registered trademark of Yale Security Inc., an ASSA ABLOY Group company.

ASSA ABLOY is the global leader in door opening solutions, dedicated to satisfying end-user needs for security, safety and convenience.

STUDIO
collection

Simpli™
Unique

ROSELESS TRIM





This elegant trim by SARGENT seamlessly unifies the lever and the door. Compatible with most Studio Collection decorative levers, Simpli™ creates a flawless aesthetic vision on any door.

Door hardware is necessary, but doesn't need to impose. Select a distinctive decorative lever and a beautiful finish to form a stunning continuum of design with Simpli.

Oh, and did we mention it's compatible with commercial grade hardware? So attractive and reliable...it's Simpli irresistible!

Benefits:

- Lever and trim melt into the door for minimal appearance
- Variety of decorative levers to complement your design
- One lever on all openings creates a consistent theme throughout your building
- 14 architectural finishes available including MicroShield® antimicrobial coating
- Maiman and Graham wood doors, Ceco Door and Curries hollow metal doors can be expertly prepared for Simpli trim

Available with:

- DL tubular lock
- 8200 mortise lock
- Harmony Series mortise access control lock



MQ



MI



ME



MO



MV

SARGENT®
ASSA ABLOY

For details, contact your ASSA ABLOY Door Security Solutions sales consultant or visit www.studiocollection.com

SARGENT Manufacturing Company
800-727-5477
www.sargentlock.com

ASSA ABLOY is the global leader in door opening solutions, dedicated to satisfying end-user needs for security, safety and convenience

the good design studio

The Good Design Studio — your resource for beautiful doors, frames and hardware from ASSA ABLOY Group brands.

www.thegooddesignstudio.com

* Not available with MC, MP, MT, MN, MK, Gramercy, Grant Park and Wooster Square Series decorative levers.

Copyright © 2011-2015, Sargent Manufacturing Company, an ASSA ABLOY Group company. All rights reserved. Reproduction in whole or part without the express written permission of Sargent Manufacturing Company is prohibited.

STUDIO
collection

Leading
THE Way
BY Design

SARGENT®

ASSA ABLOY

ASSA ABLOY, the global leader
in door opening solutions



The Studio Collection from SARGENT features superbly styled door trim available in a broad array of designs and finishes.

This collection enables inspired design professionals to incorporate their aesthetic vision into any opening, allowing a consistent appearance regardless of the door's function. Studio Collection levers are compatible with SARGENT commercial-grade mortise and tubular locks, exit devices, electromechanical and access control locks in a variety of applications.

Grant Park



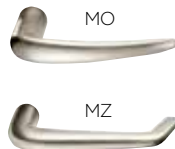
Notting Hill



Odéon



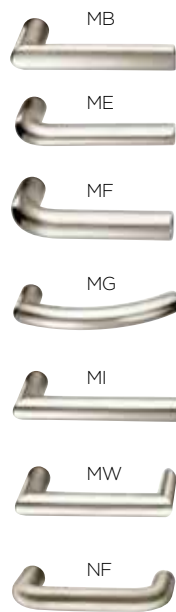
Rialto



Wooster Square



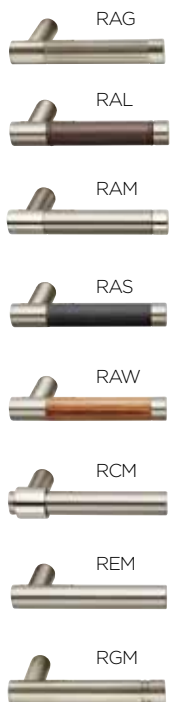
Aventura



Centro



Gramercy



SARGENT
ASSA ABLOY

For details, contact your ASSA ABLOY Door Security Solutions sales consultant or visit www.studiocollection.com

SARGENT Manufacturing Company
800-727-5477
www.sargentlock.com

ASSA ABLOY is the global leader in door opening solutions, dedicated to satisfying end-user needs for security, safety and convenience

STUDIO
collection

Leading
THE Way
BY Design

SARGENT®

ASSA ABLOY

ASSA ABLOY, the global leader
in door opening solutions



The Studio Collection from SARGENT features superbly styled door trim available in a broad array of designs and finishes.

This collection enables inspired design professionals to incorporate their aesthetic vision into any opening, allowing a consistent appearance regardless of the door's function. Studio Collection levers are compatible with SARGENT commercial-grade mortise and tubular locks, exit devices, electromechanical and access control locks in a variety of applications.

Grant Park



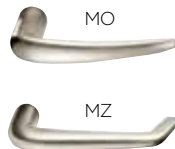
Notting Hill



Odéon



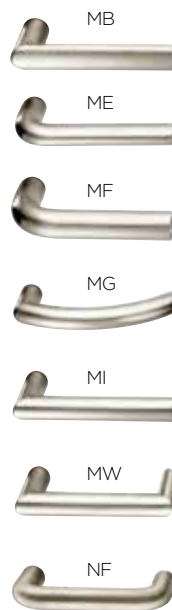
Rialto



Wooster Square



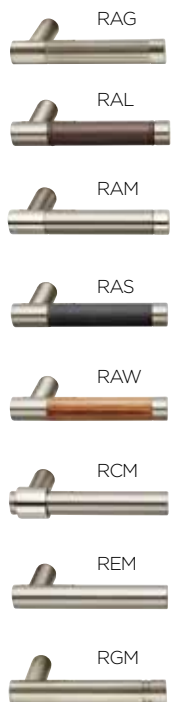
Aventura



Centro



Gramercy



SARGENT
ASSA ABLOY

For details, contact your ASSA ABLOY Door Security Solutions sales consultant or visit www.studiocollection.com

SARGENT Manufacturing Company
800-727-5477
www.sargentlock.com

ASSA ABLOY is the global leader in door opening solutions, dedicated to satisfying end-user needs for security, safety and convenience

STUDIO
collection

Gramercy
SERIES



SARGENT®
ASSA ABLOY

ASSA ABLOY, the global leader
in door opening solutions

Gramercy

Inspired by the architectural innovation of the New York City neighborhood of Gramercy Park, this collection of levers from SARGENT brings fashionable style and streamlined design to every opening. Featuring inserts of complementary and rich materials such as hand-stitched leather, wood and brushed stainless, these decorative levers offer a complete continuum of design for any application. Go ahead touch it, you'll never want to let go.

Available Finishes:

 **32** Bright stainless steel

 **32D** Satin stainless steel

Additional finishes, wood and leather colors available as special order. Consult the factory for more info.



REM



RAL



RAS



RAG



RAM



RGM



RAW



RCM

the good design studio

The Good Design Studio — your resource for beautiful doors, frames and hardware from ASSA ABLOY Group brands.

www.thegooddesignstudio.com



SARGENT
ASSA ABLOY

For details, contact your ASSA ABLOY Door Security Solutions sales consultant or visit www.studiocollection.com

SARGENT
Manufacturing Company
800-727-5477
www.sargentlock.com

ASSA ABLOY is the global leader in door opening solutions, dedicated to satisfying end-user needs for security, safety and convenience

STUDIO
collection



It's Hip To
Be Square

SARGENT®
ASSA ABLOY

ASSA ABLOY, the global leader
in door opening solutions



Square shapes relay a sense of stability, strength and balance to bring a decidedly minimalist feel to your next interior.

The modern square trim from SARGENT is available with all Studio Collection decorative levers in any of the 14 architectural finishes...be hip, go square.

Tubular Locks¹

Square roses are available with passage and privacy functions for DL Series Tubular Locks.



E2 Rose, Passage



E2 Rose, Privacy

Mortise Locks

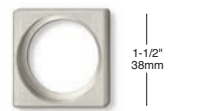
The square trim set includes cylinder collar, rose, thumbturn² and thumbturn backplate. The set is available with 7900, 8200, IN120 and Passport 1000 (P1, P2, PG) Series Mortise Locks. The E2 and E3 roses are available individually on any mortise lock where Studio Collection roses are currently offered.



E2 Rose



E3 Rose



1KA Cylinder Collar



Square Backplate with T2 Square Thumbturn

Complementary Levers



MD



MT



ND



MI



MJ



MW



MP



RAW

SARGENT

ASSA ABLOY

For details, contact your ASSA ABLOY Door Security Solutions sales consultant or visit www.studiocollection.com

SARGENT Manufacturing Company
800-727-5477
www.sargentlock.com

ASSA ABLOY is the global leader in door opening solutions, dedicated to satisfying end-user needs for security, safety and convenience

the good design studio

The Good Design Studio — your resource for beautiful doors, frames and hardware from ASSA ABLOY Group brands.

www.thegooddesignstudio.com



¹Cannot retrofit on existing cylindrical lock door preps with thru-bolt holes outside the 2-1/8" bored hole.
²Square thumbturn (T2) must be specified as an option before lock order string. The standard thumbturn will be supplied if T2 option is not listed.

Copyright © 2012-2015, Sargent Manufacturing Company, an ASSA ABLOY Group company. All rights reserved. Reproduction in whole or part without the express written permission of Sargent Manufacturing Company is prohibited.

STUDIO
collection

**Design THAT
Delivers**

STANDARD
SHIPMENT TIMES
FOR SELECTED
LEVERS & ROSES



SARGENT®

ASSA ABLOY

ASSA ABLOY, the global leader
in door opening solutions



**High performance hardware. A choice of stylish levers.
Conveniently from one source.**

SARGENT Studio Collection enhances the designs of professionals who demand the best in aesthetics through a full continuum of architectural hardware including mortise locks, tubular locks, exit devices, electromechanical and access control products. These popular Studio Collection levers and roses will now ship within standard lead times. The complete family of levers and roses for Studio Collection will continue to be available with an 8-12 week lead time.



SARGENT
ASSA ABLOY

For details, contact your ASSA ABLOY Door Security Solutions sales consultant or visit www.studiocollection.com

SARGENT Manufacturing Company
800-727-5477
www.sargentlock.com

ASSA ABLOY is the global leader in door opening solutions, dedicated to satisfying end-user needs for security, safety and convenience



Available Finishes



- 03** Bright Brass, Clear Coated
- 04** Satin Brass, Clear Coated
- 09** Bright Bronze, Clear Coated
- 10** Satin Bronze, Clear Coated
- 10B** Dark Oxidized Satin Bronze, Oil Rubbed
- 10BE** Dark Oxidized Satin Bronze, Equivalent
- 10BL** Dark Oxidized Satin Bronze, Clear Coated
- 20D** Statuary Dark Bronze, Clear Coated
- 14** Bright Nickel Plated, Clear Coated
- 15** Satin Nickel Plated, Clear Coated
- 26** Bright Chrome Plated
- 26D** Satin Chrome Plated

STUDIO
collection

Wooster
Square
SERIES



SARGENT®
ASSA ABLOY

ASSA ABLOY, the global leader
in door opening solutions

Wooster Square

One of New Haven's most prominent neighborhoods, Wooster Square, was the home to many SARGENT employees in the late 1800's. Reflective of the 19th century craftsmanship that these people brought to the area, The Wooster Square Series blends modern-day materials with tasteful, clean lines.

Features:

- Available with 9 roses, 3 escutcheons from The Studio Collection
- Offered in 14 architectural finishes — including MicroShield™ antimicrobial coating (H001 and H002 only)
- Compatible with mortise and tubular locks, access control locks and exit devices
- Designed to suite with IN120 access control reader, McKinney hinges, Rockwood door pulls and accessories



H001



H002



H003



H004



H005



H006

the good design studio

The Good Design Studio — your resource for beautiful doors, frames and hardware from ASSA ABLOY Group brands.

www.thegooddesignstudio.com



Note: H003 - H006 contain white or black polycarbonate insert

Founded in the early 1800s, SARGENT® is a market leader in locksets, cylinders, door closers, exit devices, electro-mechanical products and access control systems for new construction, renovation, and replacement applications. The company's customer base includes commercial construction, institutional, and industrial markets.

Copyright © 2015, Sargent Manufacturing Company, an ASSA ABLOY Group company. All rights reserved.

SARGENT®

ASSA ABLOY

ASSA ABLOY, the global leader
in door opening solutions

STUDIO
collection

Wooster
Square
SERIES



SARGENT®
ASSA ABLOY

ASSA ABLOY, the global leader
in door opening solutions

Wooster Square

One of New Haven's most prominent neighborhoods, Wooster Square, was the home to many SARGENT employees in the late 1800's. Reflective of the 19th century craftsmanship that these people brought to the area, The Wooster Square Series blends modern-day materials with tasteful, clean lines.

Features:

- Available with 9 roses, 3 escutcheons from The Studio Collection
- Offered in 14 architectural finishes — including MicroShield™ antimicrobial coating (H001 and H002 only)
- Compatible with mortise and tubular locks, access control locks and exit devices
- Designed to suite with IN120 access control reader, McKinney hinges, Rockwood door pulls and accessories



H001



H002



H003



H004



H005



H006

the good design studio

The Good Design Studio — your resource for beautiful doors, frames and hardware from ASSA ABLOY Group brands.

www.thegooddesignstudio.com



Note: H003 - H006 contain white or black polycarbonate insert

Founded in the early 1800s, SARGENT® is a market leader in locksets, cylinders, door closers, exit devices, electro-mechanical products and access control systems for new construction, renovation, and replacement applications. The company's customer base includes commercial construction, institutional, and industrial markets.

Copyright © 2015, Sargent Manufacturing Company, an ASSA ABLOY Group company. All rights reserved.

SARGENT®

ASSA ABLOY

ASSA ABLOY, the global leader
in door opening solutions

SARGENT
ASSA ABLOY

Efficient. Flexible. Dependable.



Ecoflex™ Technology
Always the right fit.



ASSA ABLOY, the global leader
in door opening solutions

Ecoflex™ technology, available in SARGENT electrified mortise locks, represents a significant innovation in door opening technology. The Ecoflex electrified mortise lock is ideal for access control applications, whether it's used in conjunction with a wall reader, in an integrated hard-wired lock, or in an integrated battery powered lock.



FEATURES	BENEFITS
ANSI/BHMA Grade 1 certified mortise lock	Strength and durability; assurance of high quality hardware
Reduced energy consumption and product sustainability measures	<ul style="list-style-type: none"> ■ Up to 96% energy savings, as certified by GreenCircle ■ Lower operating costs ■ Assists with load reduction in optimizing energy performance credit in LEED ■ Reduces number of power supplies required for hard-wired locks ■ Improves battery life for offline locks
Field configurable to fail-safe or fail-secure	<p>A single lock body can be used for a variety of applications throughout a facility</p> <ul style="list-style-type: none"> ■ Simplifies ordering ■ Reduces stocking requirements with one flexible lock ■ Offers greater flexibility to adapt to changing requirements
Ability to operate from 12 volts to 24 volts	<ul style="list-style-type: none"> ■ Greater flexibility in system design
Innovative actuator design	<p>Superior reliability</p> <ul style="list-style-type: none"> ■ Higher performance and reduced maintenance ■ Ability to have longer cable runs without negatively impacting lock function ■ Reduces risk of voltage drops and eliminates inductive kickback ■ Lower total cost of ownership
Available with a wide range of finishes and decorative levers	<ul style="list-style-type: none"> ■ Blends into any environment seamlessly

Technical Specifications:

12V or 24V applications

- 500mA lock body peak current draw
- 15mA lock body holding current draw*

*Approximately 5% of an equivalent solenoid

Available in:

- Electrified mortise locks
- Harmony Integrated Wiegand mortise locks
- IN120 WiFi mortise locks
- KP Series keypad mortise locks
- Passport 1000 P1 PoE mortise locks
- Passport 1000 P2 WiFi mortise locks
- Profile Series v.G1.5 offline locks
- Profile Series v.S1 PoE mortise locks
- Profile Series v.S2 WiFi mortise locks
- SE LP10 Integrated Wiegand mortise locks



In fail-safe applications, such as stairwells, the Ecoflex electrified mortise lock offers a potential savings of 50kWh per opening per year.

ASSA ABLOY is the global leader in door opening solutions, dedicated to satisfying end-user needs for security, safety and convenience

SARGENT Manufacturing Company
800-727-5477 • www.sargentlock.com



Securing the future



Passport 1000 P1 Power over Ethernet (PoE) Campus Access Control Solution



SARGENT PoE Access Control Locks

ASSA ABLOY, the global leader
in door opening solutions

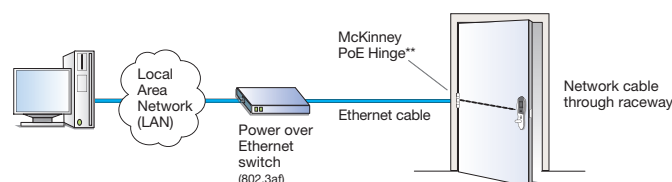
Simple, secure, online campus access control.

An online ANSI/BHMA Grade 1 lock utilizing Power over Ethernet (PoE) technology, the Passport 1000 P1 provides a cost-effective, future-proof solution for campuses. Featuring HID® multiCLASS SE™ technology, it provides simultaneous support for multiple credentials and offers an easy migration path to higher security credentials and NFC mobile access. Recognized for its contribution to sustainable buildings, the P1 re-uses existing IEEE 802.3af PoE infrastructure, streamlines the installation process, reduces costs and components, and minimizes power consumption.



FEATURES	BENEFITS
Utilizes IEEE 802.3af PoE-enabled network infrastructure for both power and data	<ul style="list-style-type: none"> Streamlines the installation process, reducing costs Eliminates the need for any proprietary equipment Enables real-time communication
HID® multiCLASS SE™ Technology with magnetic stripe reader	<ul style="list-style-type: none"> Provides heightened security Supports multiple credential technologies, offering easy migration from magnetic stripe or other contactless standards to higher security credentials or consolidation of mixed credentials Supports NFC and mobile access with Seos™
Keypad option available	<ul style="list-style-type: none"> Two-factor authentication offers enhanced security
Intelligence built into lock for local decision making	<ul style="list-style-type: none"> Lock operates regardless of network status Supports up to 2,400 users Provides a 10,000 event transaction history/audit trail
Privacy button	<ul style="list-style-type: none"> Allows shelter in place/local lockdown Enables privacy capabilities for applications such as residence halls
Reduced energy consumption and product sustainability measures	<ul style="list-style-type: none"> Uses 90% less power in standby mode than traditional access control installations, with a peak power consumption of 7 watts per lock Reuses existing network infrastructure Streamlined system architecture provides improved reliability and reduces materials
Integrated ANSI/BHMA Grade 1 hardware, available in cylindrical lock, mortise lock, and exit device configurations	<ul style="list-style-type: none"> Flexibility to support various openings Assurance of high quality hardware
Available with a wide range of finishes and decorative levers	<ul style="list-style-type: none"> Blends into any environment seamlessly Designed to meet the requirements of designers and architects

Typical Configuration



ASSA ABLOY is the global leader in door opening solutions, dedicated to satisfying end-user needs for security, safety and convenience

Credential Support:

- Mag Stripe
- High Frequency (13.56 MHz):
 - HID iCLASS®
 - HID iCLASS SE® (SIO-enabled)
 - HID iCLASS® Seos™
 - HID MIFARE® SE
 - HID DESfire® EV1 SE
 - MIFARE Classic
 - DESfire EV1
 - FeliCa
- Low Frequency (125 kHz):
 - HID Prox®
- NFC-enabled mobile phones

Technical Specifications:

- Power over Ethernet enabled
- Conforms to IEEE 802.3af PoE powered device standard
- Class 2 device defined by IEEE 802.3af requiring 7 watts

Security:

- AES 128-bit encryption

Software:

Compatible with approved third party access control software

**McKinney PoE hinge sold separately. Alternately, an Electronic Power Transfer (EPT) or door cord may be used.



For information call 800-727-5477 or visit us online at www.sargentlock.com

Securing the future

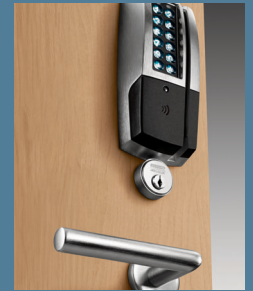


Passport 1000 P2 WiFi Campus Access Control Solution



A smart solution for today and tomorrow.

An ANSI/BHMA Grade 1 lock using WiFi technology, the Passport 1000 P2 provides a cost-effective, future-proof solution for campuses. Featuring HID® multiCLASS SE™ technology, it provides simultaneous support for multiple credentials and offers an easy migration path to higher security credentials and NFC mobile access. With no wiring required, installation is fast, easy and affordable.



FEATURES	BENEFITS
Utilizes IEEE 802.11 WiFi infrastructure	<ul style="list-style-type: none"> Significantly reduces installation costs Eliminates the need for any proprietary equipment Ideal for hard-to-wire locations
HID® multiCLASS SE™ Technology with magnetic stripe reader	<ul style="list-style-type: none"> Provides heightened security Supports multiple credential technologies, offering easy migration from magnetic stripe or other contactless standards to higher security credentials or consolidation of mixed credentials Supports NFC and mobile access with Seos™
Keypad option available	<ul style="list-style-type: none"> Two-factor authentication offers enhanced security
Field-upgradable 802.11b/g/n radio	<ul style="list-style-type: none"> Interoperability with other WiFi equipment Future proof for constantly evolving WiFi standards
Intelligence built into lock for local decision making	<ul style="list-style-type: none"> Lock operates regardless of network status Supports up to 2,400 users Provides a 10,000 event transaction history/audit trail
Privacy button	<ul style="list-style-type: none"> Allows shelter in place/local lockdown Enables privacy capabilities for applications such as residence halls
Field selectable communication frequency	<ul style="list-style-type: none"> Allows you to balance security requirements with battery life
Integrated ANSI/BHMA Grade 1 hardware, available in cylindrical lock, mortise lock, and exit device configurations	<ul style="list-style-type: none"> Flexibility to support various openings Assurance of high quality hardware
Available with a wide range of finishes and decorative levers	<ul style="list-style-type: none"> Blends into any environment seamlessly Designed to meet the requirements of designers and architects

Credential Support:

- Mag Stripe
- High Frequency (13.56 MHz):
 - HID iCLASS®
 - HID iCLASS SE® (SIO-enabled)
 - HID iCLASS® Seos™
 - HID MIFARE® SE
 - HID DESfire® EV1 SE
 - MIFARE Classic
 - DESfire EV1
 - FeliCa
- Low Frequency (125 kHz):
 - HID Prox®
- NFC-enabled mobile phones

Security:

- AES 128-bit encryption
- Supports current WiFi network security standards, including:
 - WEP, WPA and WPA2
 - 802.1x

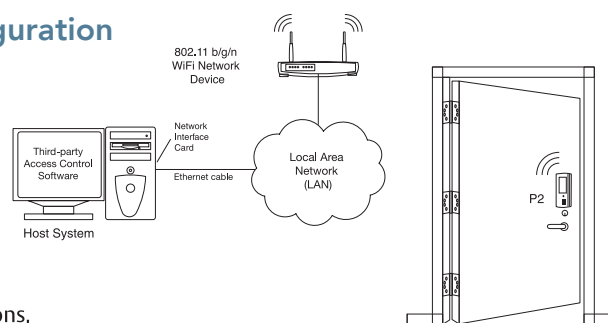
Operating Power:

- 6 AA batteries

Software:

Compatible with approved third party access control software

Typical Configuration



ASSA ABLOY is the global leader in door opening solutions, dedicated to satisfying end-user needs for security, safety and convenience



For information call 800-727-5477 or visit us online at www.sargentlock.com



Close Every Door



1331 Series Aluminum Door Closer



Looking for reliable and durable door control for most common applications? The SARGENT 1331 Series is an ANSI/BHMA Grade 1 closer that offers a full range of options to handle the most demanding applications. Featuring captured valves, a one-piece aluminum body, fully-adjustable size 1-6 spring, and range of standard and heavy-duty arms, the 1331 can be used in commercial, retail or healthcare applications.



Features

- ANSI/BHMA A156.4 Grade 1 certified
- Adjustable closing force range from size 1-6
- High impact full plastic cover; optional ABS plastic cover
- One-piece high strength aluminum alloy body
- Non-handed
- Individual backcheck, closing speed and latching speed valves
- Full range of standard and heavy duty arms
- 25-year limited warranty

Applications

- Office Buildings
- Assisted Living Facilities
- Hotel Guest Rooms
- Public Housing
- Retail Establishment

Benefits

- Durability: Certified to ANSI/BHMA Grade 1 requirements and backed by a 25-year warranty, the 1331 offers low total cost of ownership
- Flexibility: Standard and heavy duty arms along with separate speed control valves allows installation in a variety of applications
- Convenience: Non-handed closer easily installs in minutes
- Sustainable: Covered by SARGENT End-of-Life Recycling Program and optional ABS plastic cover available

Code Compliance

- Meets ANSI/BHMA A156.4 Grade 1 requirements
- Meets ANSI/BHMA A117.1
- UL and UL10C listed
- ADA compliant

SARGENT Manufacturing Company
800-727-5477 • www.sargentlock.com

Copyright © 2013 Sargent Manufacturing Company, an ASSA ABLOY Group company. All rights reserved.
Reproduction in whole or in part without the express written permission of Sargent Manufacturing Company is prohibited.

ASSA ABLOY is the global leader in door opening solutions, dedicated to satisfying end-user needs for security, safety and convenience.

Give It Your Best Shot

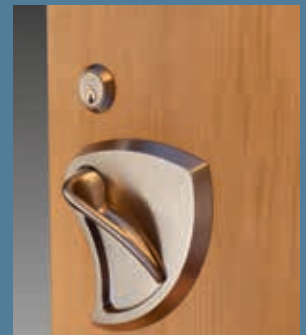


BHW Trim in Educational Settings



Worry-Free Schools

Traditional lever and knob locks are often targets for vandals in educational environments, especially in low traffic areas. SARGENT's innovative ANSI/BHMA Grade 1 BHW trim features an integrated lever and escutcheon — a unique design that is difficult to damage. The lock's low profile eliminates catch points, typical on traditional lever trim, that carts or other equipment can damage. Available in 37 functions and ADA compliant, the BHW can be used in many school applications including locker rooms, storage rooms and back entryways.



Features

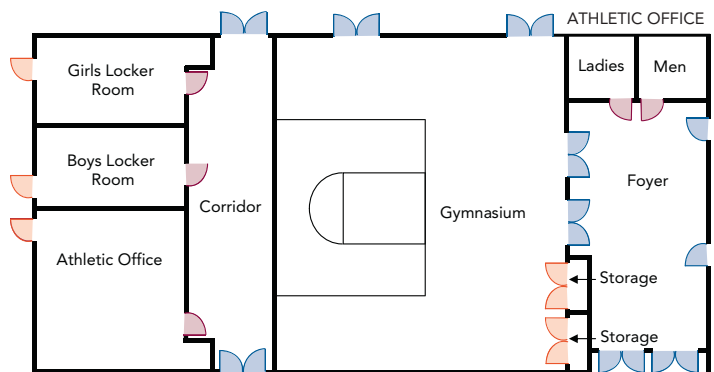
- Uses the ANSI/BHMA Grade 1 8200 mortise lock
- Available in 37 functions including electrified options
- Uses standard mortise prep, with only 2 additional holes
- Stainless Steel finishes (629, 630) standard; MicroShield® antimicrobial coating optional
- Matching thumbturn available
- Aesthetic, modern design with integrated lever and escutcheon
- UL Listed for use with Fire Rated doors
- ADA Compliant
- Patent Pending

Applications

- Locker Rooms
- Offices
- Storage Rooms
- Safe Rooms
- Laboratories

Benefits

- Strong and durable: Lock exceeds ANSI/BHMA Grade 1 requirements to withstand abusive environments; available with MicroShield® antimicrobial coating
- Safe: Low profile design reduces risk of injury by eliminating catch points
- Long lasting: Unique design reduces risk of damage from equipment or vandalism
- Beautiful: Tapered surfaces and escutcheon shape lend a modern design aesthetic to school facilities
- Easy to use: Intuitive operation of lever provides easy access for staff, students and visitors
- Versatile: 37 functions, including electrified; can be used on many opening types



Exit Device



BHW



ALP

SARGENT Manufacturing Company
100 Sargent Drive, New Haven, CT 06511 USA
800-727-5477 • www.sargentlock.com

Copyright © 2013 Sargent Manufacturing Company, an ASSA ABLOY Group company. All rights reserved. Reproduction in whole or in part without the express written permission of Sargent Manufacturing Company is prohibited.

ASSA ABLOY is the global leader in door opening solutions, dedicated to satisfying end-user needs for security, safety and convenience.



MicroShield®

As part of their promise to provide innovative solutions to their customers, certain ASSA ABLOY Group brands offer the MicroShield® technology, a silver-based antimicrobial coating designed to inhibit the growth of bacteria.

MicroShield® is a registered trademark of Yale Security Inc., an ASSA ABLOY Group company.

For Safety in Extreme Conditions



Tornado Resistant Products

During a tornado, protecting people in community refuge areas or storm shelters requires extremely durable products. As part of an overall tornado solution with other ASSA ABLOY Group brand products, SARGENT offers hardware tested to FEMA and ICC standards that withstands flying debris and pressure. In addition, these products are ANSI/BHMA Grade 1 for reliable day-to-day operation.



Features

- ANSI/BHMA Grade 1 certified
- UL listed for FEMA361, FEMA320 and ICC500 applications
- UL Listed for 3 hour doors
- Many functions to choose from, including electrified
- Available with optional MicroShield® antimicrobial coating

Applications

- Schools
- Hospitals
- Offices
- Government facilities

Tornado Ratings

	Max Size of Opening	Single or Double Doors	Max Impact Energy Resistance (ft-lbs)	Max Design Pressure	UL Listed to FEMA361	UL Listed to FEMA320	UL Listed to ICC500
FM6100/FM7100 Series	8'0" x 8'0"	both	15 lb. 2' x 4' @ 100 mph	+150/-150	yes	yes	yes
FM8700 Series	8'0" x 8'0"	both	15 lb. 2' x 4' @ 100 mph	+210/-210	yes	yes	yes
10 Line*	3'0" x 7'0"	single	15 lb. 2' x 4' @ 100 mph	+210/-210	no	yes	yes

*When used with 3 Medeco Maxum 11C Series deadbolt.



FM7100 Series Multi-Point Lock

- Multiple latch points retract with a single motion at lever and project automatically when the door is closed
- Available for doors or shutters

FM8700 Series Exit Device

- Two point latching device with adjustability through center case
- Single and double door applications

10 Line Cylindrical Lock

- Large selection of functions available to choose from, including electrified

To meet assembly requirements, use in conjunction with doors from ASSA ABLOY Group companies CECO DOOR and CURRIES.

SARGENT Manufacturing Company
800-727-5477
www.sargentlock.com

Copyright © 2013 Sargent Manufacturing Company, an ASSA ABLOY Group company. All rights reserved. Reproduction in whole or in part without the express written permission of Sargent Manufacturing Company is prohibited.

ASSA ABLOY is the global leader in door opening solutions, dedicated to satisfying end-user needs for security, safety and convenience.



MicroShield®

As part of their promise to provide innovative solutions to their customers, certain ASSA ABLOY Group brands offer the MicroShield® technology, a silver-based antimicrobial coating designed to inhibit the growth of bacteria.

MicroShield® is a registered trademark of Yale Security Inc., an ASSA ABLOY Group company.

Shelter from the Storm



Hurricane Resistant Bored Locks



To meet demanding windstorm requirements, it is critical to install reliable and durable hardware on your facility. SARGENT bored locks, when used with ASSA ABLOY Group brand doors, provide a complete solution for openings that need to be hurricane resistant.



Features

- ANSI/BHMA A156.2 certified
- UL Listed for 3 hour doors
- Successfully tested to the following:
 - ASTM E330, E1886, and E1996 test methods
 - TAS- 201, 202, and 203 High Velocity Hurricane Zone (HVHZ) protocols
- Meets Florida Building Code (FBC) requirements
- Large selection of functions available to choose from, including electrified
- Available with optional MicroShield® antimicrobial coating

Hurricane Rated Bored Locks



6500 Series



7 Line



10 Line



11 Line

To meet assembly requirements, use in conjunction with doors from ASSA ABLOY Group companies CECO and CURRIES.

For more information on bored locks, please visit www.sargentlock.com

Applications

- Schools
- Offices
- Government facilities
- Medical clinics

Hurricane Ratings

	Maximum Size of Opening	Single or Double Doors	Max Design Pressure (psf)	Max Impact Energy Resistance (ft-lbs)
6500 Series	3'0" x 7'0"	single	+60/-60	350
7 Line	3'0" x 7'0"	single	+60/-60	350
10 Line	3'0" x 7'0"	single	+60/-60	350
10 Line with 480 Series deadbolt, engaged	3'0" x 7'0"	single	+70/-70	350
11 Line	3'0" x 7'0"	single	+100/-100	350
11 Line	4'0" x 8'0"	single	+70/-70	350
11 Line with 480 Series deadbolt, engaged	4'0" x 8'0"	single	+70/-70	350
11 Line with 480 Series deadbolt, engaged and (2) Rockwood 556WS flushbolts engaged on inactive leaf	8'0" x 8'0"	double	+70/-70	350

SARGENT Manufacturing Company
800-727-5477 • www.sargentlock.com

Copyright © 2011-2013 Sargent Manufacturing Company, an ASSA ABLOY Group company. All rights reserved. Reproduction in whole or in part without the express written permission of Sargent Manufacturing Company is prohibited.

ASSA ABLOY is the global leader in door opening solutions, dedicated to satisfying end-user needs for security, safety and convenience.



MicroShield®

As part of their promise to provide innovative solutions to their customers, certain ASSA ABLOY Group brands offer the MicroShield® technology, a silver-based antimicrobial coating designed to inhibit the growth of bacteria.

MicroShield® is a registered trademark of Yale Security Inc., an ASSA ABLOY Group company. 90779 10/13

Shelter from the Storm



Hurricane Resistant Exit Devices



To meet demanding windstorm requirements, it is critical to install reliable and durable hardware on your facility. SARGENT exit devices, when used with ASSA ABLOY Group brand doors, provide a complete solution for openings that need to be hurricane resistant.



Features

- ANSI/BHMA A156.3 Grade 1 certified
- UL Listed for Panic (UL305) and Fire Rated (UL10C)
- Successfully tested to the following:
 - ASTM E330, E1886 and E1996 test methods
 - TAS-201, 202 and 203 High Velocity Hurricane Zone (HVHZ) protocols
- Meets Florida Building Code (FBC) requirements
- Exit devices available in rim, mortise, concealed vertical and surface vertical rod configurations
- Electrified functions, including electric latch retraction, available
- Available with Studio Collection decorative levers and optional MicroShield® antimicrobial coating

Applications

- Schools
- Hospitals
- Offices
- Government facilities

Hurricane Ratings

	Latching Points	Max. Size of Opening	Single or Double Doors	Max. Design Pressure (psf)	Max. Impact Energy Resistance (ft-lbs)
HC8800 Rim	1	8'0" x 8'0"	Double*	+70/- 70	350
WS8800 Rim	1	3'0" x 7'0"	Single	+60/-60	350
WS8900 Mortise	1	3'0" x 7'0"	Single	+60/-60	350
MD8600 Concealed Vertical Rod	2	8'0" x 8'0"	Double	+86/-86	350
HC8700 Surface Vertical Rod	2	8'0" x 8'0"	Double*	+65/-65	350
HC4-8700 Surface Vertical Rod	2	8'0" x 8'0"	Double	+150/-150	350

* Pair of doors with HC980 mullion

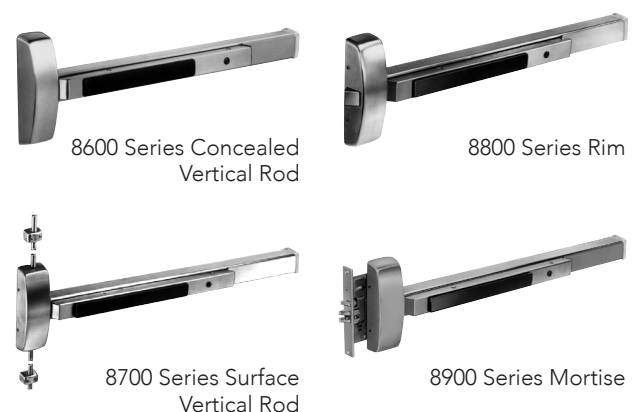
To meet assembly requirements, use in conjunction with doors from ASSA ABLOY Group companies CECO DOOR and CURRIES.

SARGENT Manufacturing Company
800-727-5477 • www.sargentlock.com

Copyright © 2013 Sargent Manufacturing Company, an ASSA ABLOY Group company. All rights reserved. Reproduction in whole or in part without the express written permission of Sargent Manufacturing Company is prohibited.

ASSA ABLOY is the global leader in door opening solutions, dedicated to satisfying end-user needs for security, safety and convenience.

Hurricane Rated Exit Devices



MicroShield®

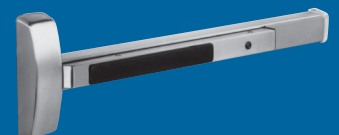
As part of their promise to provide innovative solutions to their customers, certain ASSA ABLOY Group brands offer the MicroShield® technology, a silver-based antimicrobial coating designed to inhibit the growth of bacteria.

MicroShield® is a registered trademark of Yale Security Inc., an ASSA ABLOY Group company.

Simplicity, Strength, and Durability



80 Series Exit Device



80 Series Exit Device



8600 Series Concealed Vertical Rod

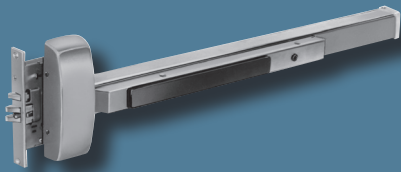
- Designed for standard width stile applications on metal or aluminum doors
- Concealed rods for security and aesthetics
- Single and double door applications
- Available less bottom rod
- ANSI/BHMS Grade 1
- UL Fire and Panic listed
- Also available in narrow stile (8400 Series)

8700 Series Surface Vertical Rod

- Two point latching (top & bottom with adjustability through center case)
- Single or double door applications
- ANSI/BHMA Grade 1
- UL Fire and Panic Listed

8800 Series Rim

- Designed for standard width stile applications on wood and metal doors
- Single point rim latching device
- Single and double door applications with mullions
- ANSI/BHMA Grade 1
- UL Fire and Panic listed
- Also available in narrow stile (8500 Series)



8900 Series Mortise Lock
Exit Device



Exit Device
Security Kit option



Beacon® option

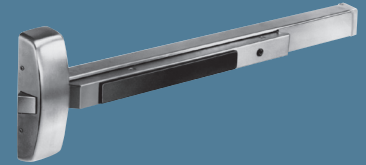
8900 Series Mortise Lock

- Designed for standard width stile applications on wood and metal doors
- Concealed single point guarded latching for additional security
- Available for single door applications or double door applications
- ANSI/BHMA Grade 1
- UL Fire and Panic listed
- Also available in narrow stile (8300 Series)

Popular options available:

- **Exit Device Security Kit** fills the gap between the exit device and the door lite that prevents intruders from wrapping chains/ropes around exit devices and locking people in.
- **Electric Latch Retraction** provides electrified retraction of the latchbolt for momentary or maintained periods.
- **ElectroGuard™ Delayed Egress** sounds a door alarm when an attempt is made to exit the door.
- **Beacon®** offers a combination of audible and visible alerts that are built into the exit device to guides occupants to the location of the exit.
- **SARGuide® Photoluminescent and Electroluminescent Exit Signage** increases the visibility of exit locations in dark or smoke filled passages.
- **Hurricane and Windstorm Resistance Certifications** meet building codes as specified by the Florida Building Code and the International Building code

The SARGENT 80 Series exit devices are ideal for environments that require strong and durable security solutions that will last the life of the building. Available in rim, mortise, surface vertical and concealed vertical rod configurations, these exit devices easily exceed ANSI/BHMA Grade 1 requirements for cycle and strength. With modular construction and few moving parts, the 80 Series devices are maintenance-free and provide unsurpassed security for any facility. Plus, options are available for unique applications including delayed egress, alarmed exit and electric latch retraction making these exit devices the go-to product in your building.



Features

- Modular construction, maintenance-free design
- Few moving parts
- Available in rim, mortise, surface vertical rod and concealed vertical rod
- Complete offering of electro-mechanical solutions
- Available with Microshield® antimicrobial coating
- Made from 61% post-consumer recycled content as per LEED MR credit 4
- 5 year warranty
- Available with Studio Collection decorative levers and 13 architectural finishes

Benefits

Strength & Reliability: Independently-verified cycle and strength testing proves the 80 Series will last the lifetime of the facility.

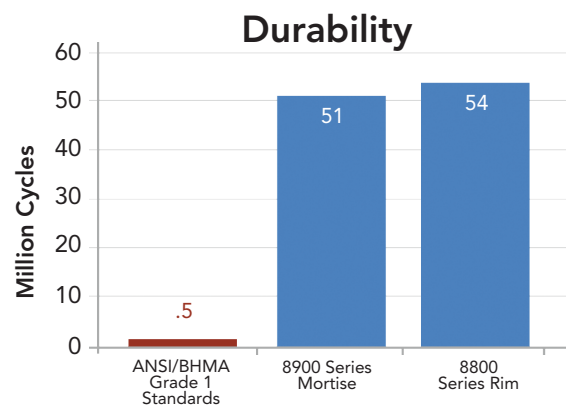
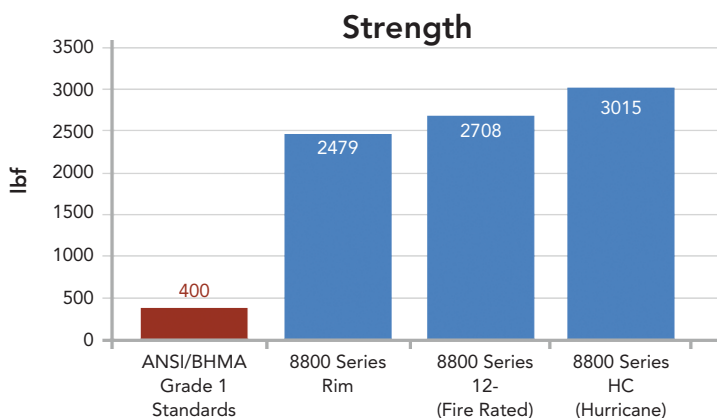
Security: Multiple security features provide additional resistance against vandalism and unauthorized entry.

Ease of Install and Maintenance: Modular components and robust design allow for quick and easy installation, and maintenance free operation.

Aesthetics: Attractive, minimalist design featuring full many levers and architectural finishes to blend with any decor.

Sustainable: Contributes to your sustainability efforts- less product replacements due to long life and high post-consumer recycled content.

Strength and Cycle Testing



Note: ANSI/BHMA standards are based on 3'0" x 7'0" doors. SARGENT devices were tested on 4'0" x 10'0" doors. All results were witnessed and verified by an independent, third party test lab.

For information call 800-727-5477 or visit us online at www.sargentlock.com

Copyright © 2013 Sargent Manufacturing Company, an ASSA ABLOY Group company. All rights reserved. Reproduction in whole or in part without the express written permission of Sargent Manufacturing Company is prohibited.

Shelter and Safety from the Storm



FM6100 and FM7100 Multi-Point Auto Deadlocking System



Multi-Point Auto Deadlocking Systems

Available for shutters (FM6100) and doors (FM7100), SARGENT multi-point auto deadlocking systems help secure community shelters and safe rooms by withstanding severe wind speeds and flying debris. Sturdy, concealed heavy-duty steel components firmly fasten the door or shutter to the frame in multiple locations. All latch points - top, bottom and center - engage when the door or shutter is closed, strengthening the opening and helping protect lives during a windstorm event.



Features

- Multiple latch points retract with a single motion at lever and project automatically when the door is closed
- Inswing and Outswing applications
- Concealed vertical rods for additional security
- Available as classroom and passage functions for doors; inside passage function x blank plate for shutters
- FM7100 available for doors sized 3' x 7' up to 4' x 8'; FM6100 available for shutters sized 1'8" x 3' up to 4' x 6'8"
- Available with Studio Collection levers and optional MicroShield™ antimicrobial coating
- Seven Year Warranty

Benefits

- Strong: Extra-heavy duty steel components, through bolts on door, and heavy duty escutcheons help withstand severe wind speeds and flying debris
- Aesthetically-pleasing: clean design with concealed vertical rods and Studio Collection decorative levers enhance any decor
- Code Compliant: UL Listed for FEMA 361 and 320 and ICC 500 applications, complies with NFPA 80 and NFPA 101 life-safety requirements and listed for usage on up to 3-hour, UL10B or 10C fire rated openings
- Integrated Assembly: Part of a complete ASSA ABLOY windstorm solution system with CECO StormPro® 361, CURRIES Storm Pro® 361 and FLEMING F-5 doors / shutters and frames and McKINNEY hinges

Applications:

- Community refuge areas, shelters and safe rooms where people seek protection from windstorm events:
 - Corporate and Educational campuses
 - Healthcare and Government facilities



For information call 800-727-5477 or visit us online at www.sargentlock.com

SARGENT Manufacturing Company
800-727-5477 • www.sargentlock.com

Copyright © 2013, Sargent Manufacturing Company, an ASSA ABLOY Group company. All rights reserved. Reproduction in whole or in part without the express written permission of Sargent Manufacturing Company is prohibited.

ASSA ABLOY is the global leader in door opening solutions, dedicated to satisfying end-user needs for security, safety and convenience.



MicroShield®

As part of their promise to provide innovative solutions to their customers, certain ASSA ABLOY Group brands offer the MicroShield® technology, a silver-based antimicrobial coating designed to inhibit the growth of bacteria.

MicroShield® is a registered trademark of Yale Security Inc., an ASSA ABLOY Group company.

School Security Solutions



Exit Devices



School administrators and facility managers have a new primary responsibility: making sure their learning environment is safe and secure. The need to keep unauthorized individuals out without inhibiting the daily freedom of movement of students and staff is of the highest priority. There are several schools of thought on how locking solutions can help accomplish this.

The best safety strategy for your facility

Appropriate door hardware is one critical element that contributes to a safe learning environment. Each school and each opening has different needs and understanding the benefits and challenges of each locking solution is crucial. Doors with exit devices or “panic bars” are of special concern. Typically used on the perimeter, these doors often serve as the first line of defense against intruders and also tend to take the most abuse.

Some safety scenarios to consider:

- Door remains locked throughout the day
- Door remains unlocked **EXCEPT** in an emergency situation
- Door locks are controlled by a central location
- Door is monitored and alarms if opened

SARGENT: When safety is priority one

Once a school has made a determination about what campus security means, there are a variety of SARGENT solutions to choose from. Many SARGENT products were developed specifically for school settings and provide unique functionality to keep students and staff safe. Finally, schools should take into consideration the life safety codes, fire codes and ADA compliance requirements in effect.

SARGENT manufactures a full line of exit devices known for their simplicity, aesthetics, and affordability. The SARGENT 80 Series is the strongest, most durable exit device in the industry today and offers the level of security performance you expect to keep students and staff safe.



Security Options for SARGENT Exit Devices



541 Exit Device Security Kit

The SARGENT 541 Exit Device Security Kit prevents intruders from locking people inside a facility by wrapping chains/ropes around exit device pushbars. The Security Kit accommodates all door styles and fills the gap between the exit device and the glass creating a flush surface with the door.



Exit Device with Double Cylinder

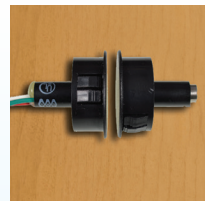
SARGENT offers a double cylinder function (16) on its 8800 Series and 8900 Series exit devices. This function provides a quick, easy way to lock the outside trim from the inside, without opening the door and is available as a cylinder or thumbturn on the inside chassis.



49 - Visual Indicator Option

The indicator, located on the inside chassis of the 8816 rim exit device with double cylinder function, displays whether the door has been secured by the cylinder on the inside of the room.

When secured, the indicator displays red with a locked icon for an easy visual confirmation; the indicator displays white with an unlocked icon when unlocked.



3287 Door Status Switch

SARGENT offers an integrated door position switch to provide assurance that the door is secure. Available with electrified exit devices, this switch sends a notification to the monitoring system when the door is out of position.

Other Exit Device Security Options

AL - Alarmed Exit

The AL- option from SARGENT is designed for areas requiring a stand-alone alarm on out swinging doors. This option sounds immediately upon exit and discourages unauthorized use.

TL - SARGuide® Electroluminescent Option

The SARGuide illuminated exit device increases the visibility of exit locations in dark or smoke filled passages, supplementing existing codes for egress lighting.

53 - Latchbolt Monitor Switch

The latch monitor provides true, tamper resistant latchbolt monitoring. The monitor switch is activated when the rail is depressed or for any reason that the latch moves.

55 - Request to Exit Option

This switch provides push rail monitoring for a variety of applications; such as to sound an alarm, initialize a delayed egress system or de-energize an electromagnetic lock.

56 - Electric Latch Retraction

Allows electrified retraction of latchbolt for momentary or maintained periods. Device returns to normal operation if fire alarm goes off or if there is an interruption of power to device. Opening remains unsecured while latchbolt is held retracted.

58 - Electric Dogging

When the push rail is depressed, the 58- is energized and simultaneously holds the rail down and retracts latch until the pushpad is released. An ideal solution where silent operation is needed.



SARGuide is available on products as a stand alone feature where ambient light charges the device or on products pre-wired with ElectroLynx® plug-in universal connectors where the light strip is built into the hardware.

ASSA ABLOY is the global leader in door opening solutions, dedicated to satisfying end-user needs for security, safety and convenience

SARGENT Manufacturing Company

100 Sargent Drive | P.O. Box 9725
New Haven, CT 06536-0915
Phone 800-727-5477
www.sargentlock.com

Classroom Security Solutions



Bored and Mortise Locks



Arrows show direction to turn the key on bored locks
(Classroom Security Intruder function)



Red indicator clearly displays locked/unlocked on mortise locks
(Classroom Security Intruder function)

School administrators and facility managers have a new primary responsibility: making sure their learning environment is safe and secure. The need to keep unauthorized individuals out without inhibiting the daily freedom of movement of students and staff is of the highest priority. There are several schools of thought on how locking solutions can help accomplish this.

The best safety strategy for your facility

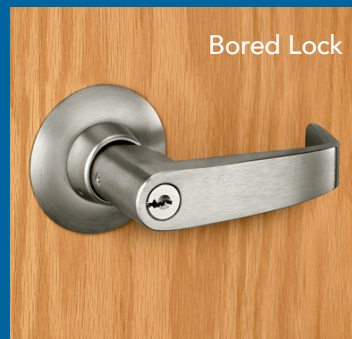
Appropriate door hardware is one critical element that contributes to a safe learning environment. Each school and each opening has different needs and understanding the benefits and challenges of each locking solution is crucial. Some safety scenarios to consider:

- Door remains locked throughout the day
- Door remains unlocked **EXCEPT** in an emergency situation
- Door locks are controlled by a central location

SARGENT: When safety is priority one

Once a school has made a determination about what classroom security means, there are a variety of SARGENT solutions to choose from. Many SARGENT products were developed specifically for school settings and provide unique functionality to keep students and staff safe.

SARGENT mechanical Grade 1 mortise and cylindrical locks offer many functions designed for securing classrooms and that allow you to customize the security on your doors. Innovative and affordable, SARGENT locks help you secure their world.



All of the functions in the chart below allow **FREE** egress and the outside (hallway) lever allows access by using a key.

HOW DO YOU LOCK THE OUTSIDE (HALLWAY) LEVER?	SARGENT FUNCTION NO. (ANSI FUNCTION NO.)	FUNCTIONALITY*	GRADE 1 BORED LOCK	GRADE 1 MORTISE LOCK
Lever is always locked	04 Storeroom (Bored F86, Mortise F07)	Outside lever is always locked; access to room requires key or someone from inside to open door.	X	X
Key outside; Pushbutton on inside lever	54 Corridor or Dormitory (Bored F90)	Key outside or pushbutton inside locks outside lever; rotating inside lever unlocks outside trim.	X	
Key inside	16 Classroom, Security, Apartment, Exit, Privacy (Bored F88, Mortise F09)	Outside lever is locked by key from inside. Key in outside lever retracts latch but does not unlock. Note: Need key holder to lock outside lever or access room from Outside. Key inside can set outside lever to passage mode	X	X
Turnbutton on inside lever	05 Entrance/Office (Bored 81)	Button inside locks trim. Key outside allows access to room. Note: Key outside will not unlock trim.	X	
Key outside	37 Classroom (Bored F84, Mortise F05)	Outside lever can be locked or unlocked by key; cannot lock outside lever from inside classroom.	X	X
Key, inside or outside	38 Classroom Security Intruder	Key inside or outside locks/unlocks trim. If locked by inside lever, key in outside retracts latch but does not unlock trim. Comes standard with locking direction engraved on inside rose. Note: Need key to lock outside lever or access room from outside.	X	
	38 Classroom Security Intruder (Mortise F32)	Key inside or outside locks/unlocks trim. If locked by inside lever, key in outside retracts latch but does not unlock trim. Available with visual indicator confirming whether the door is secure or not (49-).		X
	39 Classroom Security Deadbolt (Mortise F33)	Latch and deadbolt work in concert; key locks and unlocks latch and deadbolt from either side. When rotated, inside lever unlocks outside lever and retracts deadbolt. Note: After exiting, you must relock by key to prevent entry into the room.		8200 Mortise locks only
	40 Classroom Security Deadbolt (Mortise F34)	Same as 39 but with a deadlatch. Note: After exiting, you must relock by key to prevent entry into the room.		8200 Mortise locks only
	41 Classroom Security Deadbolt	Key on either side locks and unlocks latch and deadbolt - first rotation locks deadbolt, second rotation locks outside trim; rotating inside lever retracts both latch and deadbolt but outside lever remains locked. Note: In an emergency situation, number of rotations may be questioned.		8200 Mortise locks only

* Deadlocking latch standard on all functions listed, except Classroom Security Deadbolt function (39).

Other functions are available. For complete product descriptions refer to product catalogs or consult your ASSA ABLOY Door Security Solutions sales consultant.

ASSA ABLOY is the global leader in door opening solutions, dedicated to satisfying end-user needs for security, safety and convenience

SARGENT Manufacturing Company
 100 Sargent Drive | P.O. Box 9725
 New Haven, CT 06536-0915
 Phone 800-727-5477
www.sargentlock.com

Classroom Security Solutions



Profile Series v.G1.5 Lock with RF Fob



School administrators and facility managers have a new primary responsibility: making sure their learning environment is safe and secure. The need to keep unauthorized individuals out without inhibiting the daily freedom of movement of students and staff is of the highest priority. There are several schools of thought on how locking solutions can help accomplish this.

The best safety strategy for your facility

An appropriate access control system is one critical element that contributes to a safe learning environment. Each school and each opening has different needs and understanding the benefits and challenges of each locking solution is crucial. In addition, facilities are often faced with the challenge of increasing security within the constraints of existing budgets and with minimal disruption to the school.

Some access control scenarios to consider:

- Door remains locked throughout the day
- Door remains unlocked EXCEPT in an emergency situation
- Access control locks that require credentials to enter room
- Door locks are controlled by a central location

SARGENT: When safety is priority one

Once a school has made a determination about what campus security means, there are a variety of SARGENT solutions to choose from. Many SARGENT products were developed specifically for school settings and provide unique functionality to keep students and staff safe. Finally, schools should take into consideration the life safety codes, fire codes and ADA compliance requirements in effect.

The affordable SARGENT Profile Series v.G1.5, a standalone access control lock, offers unique functionality that is ideal for classroom applications. Providing easy everyday access to the classroom using a PIN code or proximity card, the G1.5 also provides the ability to lock the door quickly with an RF fob from almost anywhere inside the room.



vG1.5 Series Features

- Supports 2,000 users
- Provides 2,000 event audit trail
- Credential support:
 - HID® 125 kHz prox card
 - RF fob
- Available with keypad for dual factor authentication
- Programmable via keypad, data transfer device (DTD), or PDA*
- Available with key override
- Supports multiple types of users, such as extended, temporary, or supervisory
- Available in mortise lock, cylindrical lock, or exit device configurations

* DTD required for Windows Vista and later

System Requirements

- **Software:**
 - SoloPlus™ Access Control Management Software
 - Microsoft Windows based operating system (XP and later) or Windows Server (2003, 2008)*
 - Local administrative rights to the computer
- **Hardware:**
 - CD-Rom drive
 - Data Transfer Device or PDA (refer to catalog for compatible models)

* Refer to catalog or call 800-810-WIRE for specific information on compatible operating systems

RF Fob "Panic" Functionality and Schools

Ideal for classroom environments, RF fobs offer a convenient solution for remote control locking of the Profile Series v.G1.5.

When programmed for Panic mode and actuated from within 75 feet of the lock (inside):

- The door locks and disables all "user" credentials (both PIN code and prox card)
- The door stays locked even if fob is pressed repeatedly
- An interior indicator flashes red to show the door is in lockdown
- The lock must be reset by a master credential



RF Fob Features

- Three RF actuation modes: passage, unlock/relock or panic
- Use technology codes TU, TP, or TA to order RF functionality
- UL and cUL Listed for fire doors
- Typical operating distance of 35 to 75 feet on inside of door; 10 to 25 feet on outside of door*

* Depends on building construction



ASSA ABLOY is the global leader in door opening solutions, dedicated to satisfying end-user needs for security, safety and convenience

SARGENT Manufacturing Company

100 Sargent Drive | P.O. Box 9725

New Haven, CT 06536-0915

Phone 800-727-5477

www.sargentlock.com

Behavioral Health Series™



BHL Trim



Safe and Sound

The SARGENT BHL trim is part of the Behavioral Health Series™ of products. With an array of functions, this trim can be used on virtually any opening in healthcare environments. Sloping surfaces and overlapping rose and lever address safety concerns common in behavioral health facilities. Perfect for tough environments, the BHL trim uses the SARGENT 8200 mortise lock, providing impressive strength and reliability.



Features

- Overlapping lever and rose construction
- Uses the ANSI/BHMA Grade 1 8200 mortise lock
- Available in 21 functions, including Asylum/Institutional (ANSI F30) and Institutional Privacy (ANSI F26) and 4 electrified options
- Uses standard mortise prep
- Stainless Steel finishes (629, 630) standard; MicroShield® antimicrobial coating optional
- Matching behavioral health thumbturn available
- UL Listed for use with Fire Rated doors
- ADA Compliant

Benefits


- Strong and durable: lock exceeds ANSI/BHMA Grade 1 requirements to withstand abusive environments
- Flexible: 21 functions, including electrified; can be used on many opening types
- Minimizes risk: Sloped surfaces and overlapping rose with lever address common concerns in behavioral health environments; available with MicroShield® antimicrobial coating
- Simple retrofit: Upgrade existing openings easily; uses standard mortise door prep

Applications

- Behavioral Health Units
- Patient Room Doors
- De-escalation Rooms
- Psychiatric Facilities
- Assisted Living Facilities

Other Products in the Behavioral Health Series

- BHW Trim for the 8200 Mortise Lock
- BHD Knob for use with 7800 Series and 9200 Series
- Push/Pull Paddle Trim (ALP) for the 8200 Mortise Lock and HP Bored Lock

 **MicroShield®**
As part of their promise to provide innovative solutions to their customers, certain ASSA ABLOY Group brands offer the MicroShield® technology, a silver-based antimicrobial coating designed to inhibit the growth of bacteria.
MicroShield® is a registered trademark of Yale Security Inc., an ASSA ABLOY Group company.

NOTE: Although these products are better designed for behavioral health applications than traditional trim, they do not eliminate the risk that an object can be affixed to, or around them.

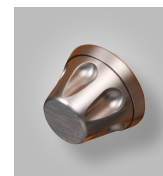
SARGENT Manufacturing Company
For more information call 800-727-5477 or visit us online at www.sargentlock.com

Copyright © 2012 Sargent Manufacturing Company, an ASSA ABLOY Group company. All rights reserved. Reproduction in whole or in part without the express written permission of Sargent Manufacturing Company is prohibited.

ASSA ABLOY is the global leader in door opening solutions, dedicated to satisfying end-user needs for security, safety and convenience.



BHW Trim



BHD Knob



ALP Trim

Designed for Access Control



Harmony Series Online Integrated Wiegand Access Control Solution



As awarded by The Chicago Athenaeum:
Museum of Architecture and Design.

ASSA ABLOY, the global leader
in door opening solutions

Sophisticated Wiegand solution.

Big features in a small, well-styled lock. Card reader, monitoring capabilities and SARGENT ANSI/BHMA Grade 1 hardware with direct Wiegand output are beautifully presented in the Harmony Series. Designed to blend into any environment flawlessly, Harmony is in tune with the aesthetic needs of the architect, and provides high security for the facility manager. With all components consolidated into the lock, installation time is reduced significantly compared to traditional access control installations.



Features	Benefits
Elegant design incorporates all access control components, including: card reader, door position switch, and request to exit monitoring sensors	Streamlined appearance blends seamlessly into any environment and maintains architectural integrity around the door; significantly reduces installation time
Open architecture platform	Compatibility with all popular access control systems
Integrated ANSI/BHMA Grade 1 hardware, available in: 10 Line Cylindrical Lock, 8200 Series Mortise Lock, 80 Series Exit Device, and 7000 Series Multi-Point Vertical Rod	Flexibility to support a variety of openings; industry leading Grade 1 hardware offers the highest degree of physical security available in access control locks
Direct Wiegand output	Eliminates the need for an interface panel
Supports industry leading credentials: HID® 125 kHz prox or HID® 13.56 MHz iCLASS®	Easy integration with existing credential systems
Lockdown capable	Ability to secure areas immediately from central security system
Secure-side electronics	Increased security and reduced risk of vandalism
Provided with pre-terminated ElectroLynx® connectors	Reduced installation time and costs; improved reliability
Weatherseal gasket and conduit included. Shroud available.	Can be used on a variety of exterior doors
Available with 56- Electric Latch Retraction with pull trim	Ideal for exterior openings in high abuse areas
Available with integrated magnetic door position switch (IDP) (patent pending)	Enhanced monitoring capabilities provide added assurance that the door is secure



ASSA ABLOY Group brands are the only providers of a complete range of access control solutions with full iCLASS® authentication.



MicroShield®

As part of their promise to provide innovative solutions to their customers, certain ASSA ABLOY Group brands offer the MicroShield® technology, a silver-based antimicrobial coating designed to inhibit the growth of bacteria.

MicroShield® is a registered trademark of Yale Security Inc., an ASSA ABLOY Group company.

Hardwiring Made Easy™



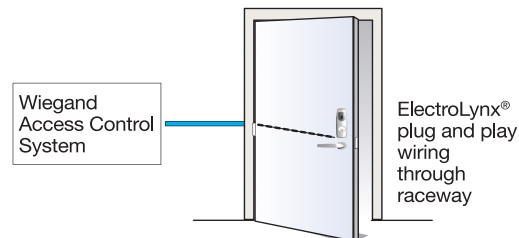
ElectroLynx®

As part of their promise to provide innovative, fast and effective high security solutions to their customers, certain ASSA ABLOY Group brands offer ElectroLynx®, a universal quick-connect system that simplifies the electrification of the door opening.

ElectroLynx® is a registered trademark of ASSA ABLOY Inc.

Specifications and System Requirements

- 125 kHz prox: reader - 12VDC; lock available as 12 or 24VDC
- 13.56 MHz iCLASS: lock and reader available as either 12 or 24VDC
- 80 Series exit device trim: 24VDC
- Fail Safe and Fail Secure solenoid versions available
- Harmony locks are listed to UL 294 (Access Control System Units). UL 294 is a U.S. system level certification. For information regarding access control system compliance, please call 800-810-WIRE



* U.S. Patent D601,001S; D601,002S; D601,003S; D602,762S

SARGENT Manufacturing Company
For more information call 800-727-5477 or visit us online at www.sargentlock.com

Copyright © 2009 - 2012 Sargent Manufacturing Company, an ASSA ABLOY Group company. All rights reserved. Reproduction in whole or in part without the express written permission of Sargent Manufacturing Company is prohibited.

HID and iCLASS are registered trademarks of HID Global in the U.S. and/or other countries. The Genuine HID Technology logo is a trademark owned and licensed by HID Global.

ASSA ABLOY is the global leader in door opening solutions, dedicated to satisfying end-user needs for security, safety and convenience.



In a Class By Itself



Passport 1000 PG Stand-Alone Campus Access Control Solution



Powerful Campus Access Control

Designed specifically for the needs of today's campuses, the Passport 1000 PG lock offers an efficient and cost-effective solution for comprehensive, reliable access control. With the ability to update access control rights without visiting the door, Passport 1000 PG locks combine centralized security and high quality SARGENT hardware with the ease and affordability of an offline lock.



Features

- Intelligent, integrated ANSI/BHMA Grade 1 hardware, available in:
 - 10 Line Bored Lock
 - 8200 Series Mortise Lock
 - 80 Series Exit Device
- Supports high coercivity mag stripe credentials; also available with keypad
- Supports 1,200 users per lock; audit trail for last 700 events
- Seamless database integration and software interface with enterprise, transaction and housing systems
- Issue cards at multiple locations, allowing administrators to issue new or replacement keycards in seconds, from anywhere on campus
- Ability to customize access, by defining unlimited access, extended-hours access or no access, by user and facility, down to the individual lock
- One Card solution uses a single keycard to provide user identification, building access, and parking privileges, allowing for the ultimate in personalized security
- Time-control user access allows campuses to limit entry to specific areas and hours
- Ability to audit event histories allows you to interrogate locks and review event history
- Uses six AA batteries for easy, cost-effective deployment and maintenance

Available with SARGENT Designer Levers

- Studio Collection
- Coastal Series

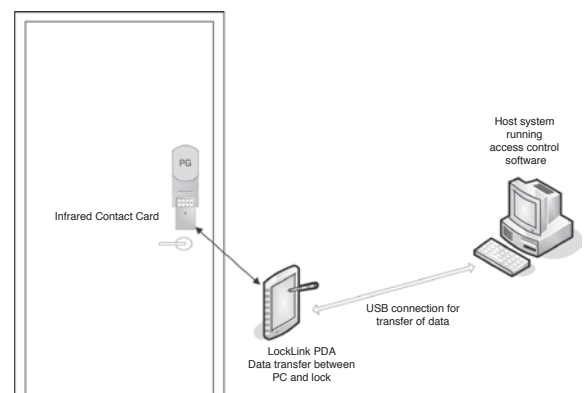


Benefits

- Significantly reduces installation time
 - No wires needed
 - Maintains architectural integrity around the door
 - Fewer discrete components to install than traditional access control
- Ability to update access rights without visiting the door simplifies access control and ensures more timely updates for higher security
- No special credentials needed; works with your campus' magstripe cards

Software

Compatible with approved third party access control software



For information call 800-727-5477 or visit us online at www.sargentlock.com

SARGENT Manufacturing Company
800-727-5477 • www.sargentlock.com

Copyright © 2010-2011, Sargent Manufacturing Company, an ASSA ABLOY Group company. All rights reserved. Reproduction in whole or in part without the express written permission of Sargent Manufacturing Company is prohibited.

ASSA ABLOY is the global leader in door opening solutions, dedicated to satisfying end-user needs for security, safety and convenience.

Access control in the palm of your hands

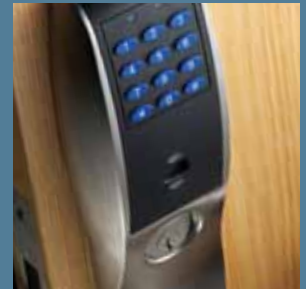


Profile Series v.G1.5 Stand Alone Access Control




Stand Alone Access Control

Profile Series v.G1.5 stand-alone locks provide a simple and affordable option for customized access control. Programmed via PDA or handheld data transfer, the locks offer a broad selection of technologies and programming features, supported by the physical security of a SARGENT ANSI/BHMA Grade 1 mechanical lock.



Lock Features

- Supports 2,000 users
- Provides 2,000 event audit trail
- Credential support:
 - HID® 125 kHz prox 
 - RF fob
- Available with keypad for dual factor authentication
- Programmable via keypad, data transfer device (DTD), or PDA*
- Available with key override
- Supports multiple types of users, such as extended, temporary, or supervisory
- Available in mortise lock, cylindrical lock, or exit device configurations

* DTD required for Windows Vista and later

Specifications and System Requirements

Software:

- SoloPlus™ Access Control Management Software
- Microsoft Windows based operating system (XP and later) or Windows Server (2003, 2008)*

Hardware:

- VGA monitor
- CD Rom drive
- Instruction manual (included)
- Data Transfer Device or PDA (refer to catalog for compatible models)



*Refer to catalog or call 800-810-WIRE for specific information on compatible operating systems

SoloPlus Features

- Database supports up to 20,000 users
- Ability to access information from multiple PCs through the use of a system manager
- Ability to view, print, and save reports
- User-friendly task list facilitates initial set up

Complete your system with:

- ES-G1 Enrollment Station for enrolling HID® 125 kHz proximity cards, up to 40 bit format, into SoloPlus software
- Stand-alone Prox Reader (hard powered) for openings that require an auto operator

Available with SARGENT Designer Levers

- Studio Collection
- Coastal Series



MicroShield®

As part of their promise to provide innovative solutions to their customers, certain ASSA ABLOY Group brands offer the MicroShield® technology, a silver-based antimicrobial coating designed to inhibit the growth of bacteria.

MicroShield® is a registered trademark of Yale Security Inc., an ASSA ABLOY Group company.

SARGENT Manufacturing Company
 800-727-5477 • www.sargentlock.com

Copyright © 2011, Sargent Manufacturing Company, an ASSA ABLOY Group company. All rights reserved. Reproduction in whole or in part without the express written permission of Sargent Manufacturing Company is prohibited.

HID is a registered trademark of HID Global Corporation.

ASSA ABLOY is the global leader in door opening solutions, dedicated to satisfying end-user needs for security, safety and convenience.



Faster, Quieter, Easier.



56- Electric Latch Retraction Exit Devices

Hardwiring Made Easy™



ASSA ABLOY, the global leader
in door opening solutions

Take charge of your exits.

The Electric Latch Retraction exit device from SARGENT provides remote-controlled latch retraction for high traffic egress doors, and delivers quiet, smooth operation. Easily installed in new or retrofit applications, the 56- ELR features maintenance-free design with few moving parts. Plus, each device draws less than one amp of power, simplifying installation and increasing system design flexibility.



Features

- Available option on all 80 Series Exit Devices
- Retrofit kits available for existing devices
- Motor-driven latch retraction
- Continuous or intermittent use
- Digital timer (0-20 seconds) – no costly external timer required
- Diagnostic LED to improve field service
- Available for 28" – 48" doors
- .6A during retraction and .25A maintained in dogged hold position
- 24 VDC regulated/filtered power supply required
- UL Listed for Class II circuitry
- Available for panic and fire exit hardware
- Compatible with Latchbolt Monitoring, Rail Signal Switch, Electroluminescent Rail, Hex Key and Cylinder Dogging

Benefits

- Uses standard electric hinge – special power transfer device NOT required
- Low current draw
- No special power supply required
- Self-adjusting retraction reduces installation time and improves performance
- Backwards compatible for ease of service in the field
- Fast and quiet retraction perfect for Offices, Convention Halls, Schools, Healthcare Facilities, Theaters and Libraries, and any environment sensitive to noise that demands consistent performance



ElectroLynx®

As part of their promise to provide innovative, fast and effective high security solutions to their customers, ASSA ABLOY Group companies offer ElectroLynx®, a universal quick-connect system that simplifies the electrification of the door opening.

ElectroLynx® is a registered trademark of ASSA ABLOY Inc.

SARGENT Manufacturing Company
For more information call 800-727-5477 or visit us online at
www.sargentlock.com

Copyright © 2009 - 2011 Sargent Manufacturing Company, an ASSA ABLOY Group company. All rights reserved. Reproduction in whole or in part without the express written permission of Sargent Manufacturing Company is prohibited.

ASSA ABLOY is the global leader in door opening solutions, dedicated to satisfying end-user needs for security, safety and convenience.

Connect the Locks.



Profile Series v.S1 Power over Ethernet (PoE) Access Control Solution



Simple, secure, on-line access control.

The Profile Series v.S1 brings the power of your network to your door hardware. An ANSI/BHMA Grade 1 lock utilizing Power over Ethernet (PoE) technology, the v.S1 connects to the building's Ethernet network, and can make decisions locally. Non-proprietary cable, PoE switches and midspans allow easy and cost-effective installations. With real-time door status monitoring and alarm notification, the v.S1 is available in exit device, mortise and cylindrical lock configurations.



Features	Benefits
Utilizes IEEE 802.3af PoE-enabled network infrastructure for both power and data (Class 2 device)	Streamlines the installation process, reduces costs, and enables real-time communication
Integrated ANSI/BHMA Grade 1 hardware, available in: 10 Line Bored Lock; 8200 Series Mortise Lock; 80 Series Exit Device	Flexibility to support a variety of openings; industry leading Grade 1 hardware offers the highest degree of physical security available in access control locks
Intelligence built into lock for local decision making	Lock operates regardless of network status; supports up to 2,400 users per lock and provides a 10,000 event transaction history/audit trail
Supports HID® 125 kHz prox or 13.56 MHz iCLASS® credentials (26 - 39 bit); supports CSN reads for other common 13.56 MHz cards, including MiFare, DesFire, and Felica	Integrates easily with existing credential systems
Full iCLASS® credential authentication	Offers enhanced security through encryption and mutual authentication
Built-in door status monitoring and configurable alarm notifications	Provides real-time alarms for immediate response
Weatherseal gasket and conduit included. Shroud available.	Can be used on a variety of exterior doors
Open architecture design	Facilitates integration with any access control system
Keypad option available	Two-factor authentication offers enhanced security

Technical Specifications

Security

- Advanced data security with standard encryption techniques
- AES 128-bit encryption

Software

- Lock Management Tool available for small installations
- To ensure quick and easy integration, our products are tested and certified to work with access control software and systems from many providers. Visit www.intelligentopenings.com for a complete list of partners.
- Software Development Kits (SDK) and support available to integrate into other third party access control systems. Call 800-810-WIRE for assistance.

Available with SARGENT Designer Levers

- Studio Collection
- Coastal Series



ASSA ABLOY Group brands are the only providers of a complete range of access control solutions with full iCLASS® authentication.



MicroShield®

As part of their promise to provide innovative solutions to their customers, certain ASSA ABLOY Group brands offer the MicroShield® technology, a silver-based antimicrobial coating designed to inhibit the growth of bacteria.

MicroShield® is a registered trademark of Yale Security Inc., an ASSA ABLOY Group company.

SARGENT Manufacturing Company

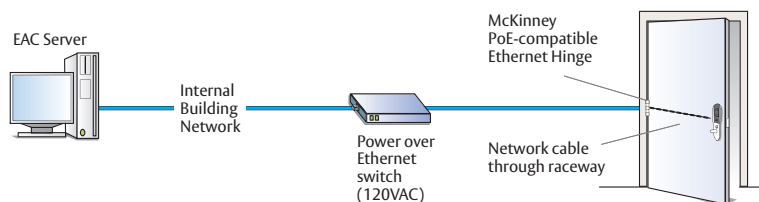
For information call 800-727-5477 or visit us online at www.sargentlock.com

Copyright © 2010 Sargent Manufacturing Company, an ASSA ABLOY Group company. All rights reserved. Reproduction in whole or in part without the express written permission of Sargent Manufacturing Company is prohibited.

The Genuine HID Technology logo is a trademark owned and licensed by HID Global.

HID and iCLASS are registered trademarks of HID Global Corporation.

ASSA ABLOY is the global leader in door opening solutions, dedicated to satisfying end-user needs for security, safety and convenience.



Typical System Configuration



SARGENT
ASSA ABLOY

Connect the Locks.



Profile Series v.S1 Power over Ethernet (PoE) Access Control Solution



Simple, secure, on-line access control.

The Profile Series v.S1 brings the power of your network to your door hardware. An ANSI/BHMA Grade 1 lock utilizing Power over Ethernet (PoE) technology, the v.S1 connects to the building's Ethernet network, and can make decisions locally. Non-proprietary cable, PoE switches and midspans allow easy and cost-effective installations. With real-time door status monitoring and alarm notification, the v.S1 is available in exit device, mortise and cylindrical lock configurations.



Features	Benefits
Utilizes IEEE 802.3af PoE-enabled network infrastructure for both power and data (Class 2 device)	Streamlines the installation process, reduces costs, and enables real-time communication
Integrated ANSI/BHMA Grade 1 hardware, available in: 10 Line Bored Lock; 8200 Series Mortise Lock; 80 Series Exit Device	Flexibility to support a variety of openings; industry leading Grade 1 hardware offers the highest degree of physical security available in access control locks
Intelligence built into lock for local decision making	Lock operates regardless of network status; supports up to 2,400 users per lock and provides a 10,000 event transaction history/audit trail
Supports HID® 125 kHz prox or 13.56 MHz iCLASS® credentials (26 - 39 bit); supports CSN reads for other common 13.56 MHz cards, including MiFare, DesFire, and Felica	Integrates easily with existing credential systems
Full iCLASS® credential authentication	Offers enhanced security through encryption and mutual authentication
Built-in door status monitoring and configurable alarm notifications	Provides real-time alarms for immediate response
Weatherseal gasket and conduit included. Shroud available.	Can be used on a variety of exterior doors
Open architecture design	Facilitates integration with any access control system
Keypad option available	Two-factor authentication offers enhanced security

Technical Specifications

Security

- Advanced data security with standard encryption techniques
- AES 128-bit encryption

Software

- Lock Management Tool available for small installations
- To ensure quick and easy integration, our products are tested and certified to work with access control software and systems from many providers. Visit www.intelligentopenings.com for a complete list of partners.
- Software Development Kits (SDK) and support available to integrate into other third party access control systems. Call 800-810-WIRE for assistance.

Available with SARGENT Designer Levers

- Studio Collection
- Coastal Series



ASSA ABLOY Group brands are the only providers of a complete range of access control solutions with full iCLASS® authentication.



MicroShield®

As part of their promise to provide innovative solutions to their customers, certain ASSA ABLOY Group brands offer the MicroShield® technology, a silver-based antimicrobial coating designed to inhibit the growth of bacteria.

MicroShield® is a registered trademark of Yale Security Inc., an ASSA ABLOY Group company.

SARGENT Manufacturing Company

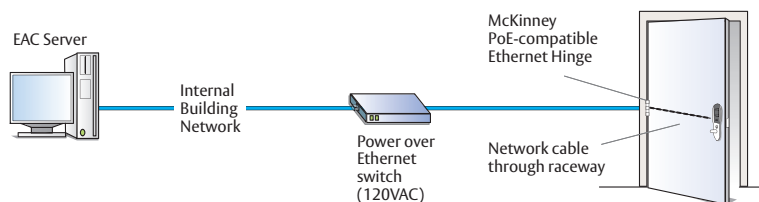
For information call 800-727-5477 or visit us online at www.sargentlock.com

Copyright © 2010 Sargent Manufacturing Company, an ASSA ABLOY Group company. All rights reserved. Reproduction in whole or in part without the express written permission of Sargent Manufacturing Company is prohibited.

The Genuine HID Technology logo is a trademark owned and licensed by HID Global.

HID and iCLASS are registered trademarks of HID Global Corporation.

ASSA ABLOY is the global leader in door opening solutions, dedicated to satisfying end-user needs for security, safety and convenience.



Typical System Configuration



SARGENT
ASSA ABLOY

Connect the Locks.



Profile Series v.S1 Power over Ethernet (PoE) Access Control Solution



Simple, secure, on-line access control.

The Profile Series v.S1 brings the power of your network to your door hardware. An ANSI/BHMA Grade 1 lock utilizing Power over Ethernet (PoE) technology, the v.S1 connects to the building's Ethernet network, and can make decisions locally. Non-proprietary cable, PoE switches and midspans allow easy and cost-effective installations. With real-time door status monitoring and alarm notification, the v.S1 is available in exit device, mortise and cylindrical lock configurations.



Features	Benefits
Utilizes IEEE 802.3af PoE-enabled network infrastructure for both power and data (Class 2 device)	Streamlines the installation process, reduces costs, and enables real-time communication
Integrated ANSI/BHMA Grade 1 hardware, available in: 10 Line Bored Lock; 8200 Series Mortise Lock; 80 Series Exit Device	Flexibility to support a variety of openings; industry leading Grade 1 hardware offers the highest degree of physical security available in access control locks
Intelligence built into lock for local decision making	Lock operates regardless of network status; supports up to 2,400 users per lock and provides a 10,000 event transaction history/audit trail
Supports HID® 125 kHz prox or 13.56 MHz iCLASS® credentials (26 - 39 bit); supports CSN reads for other common 13.56 MHz cards, including MiFare, DesFire, and Felica	Integrates easily with existing credential systems
Full iCLASS® credential authentication	Offers enhanced security through encryption and mutual authentication
Built-in door status monitoring and configurable alarm notifications	Provides real-time alarms for immediate response
Weatherseal gasket and conduit included. Shroud available.	Can be used on a variety of exterior doors
Open architecture design	Facilitates integration with any access control system
Keypad option available	Two-factor authentication offers enhanced security

Technical Specifications

Security

- Advanced data security with standard encryption techniques
- AES 128-bit encryption

Software

- Lock Management Tool available for small installations
- To ensure quick and easy integration, our products are tested and certified to work with access control software and systems from many providers. Visit www.intelligentopenings.com for a complete list of partners.
- Software Development Kits (SDK) and support available to integrate into other third party access control systems. Call 800-810-WIRE for assistance.

Available with SARGENT Designer Levers

- Studio Collection
- Coastal Series



ASSA ABLOY Group brands are the only providers of a complete range of access control solutions with full iCLASS® authentication.



MicroShield®

As part of their promise to provide innovative solutions to their customers, certain ASSA ABLOY Group brands offer the MicroShield® technology, a silver-based antimicrobial coating designed to inhibit the growth of bacteria.

MicroShield® is a registered trademark of Yale Security Inc., an ASSA ABLOY Group company.

SARGENT Manufacturing Company

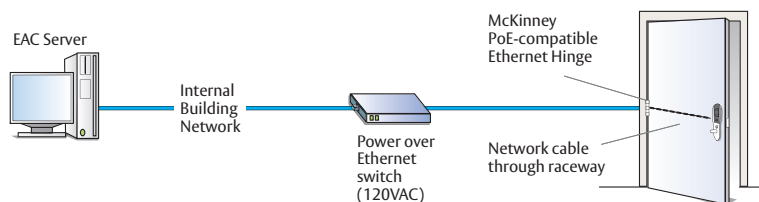
For information call 800-727-5477 or visit us online at www.sargentlock.com

Copyright © 2010 Sargent Manufacturing Company, an ASSA ABLOY Group company. All rights reserved. Reproduction in whole or in part without the express written permission of Sargent Manufacturing Company is prohibited.

The Genuine HID Technology logo is a trademark owned and licensed by HID Global.

HID and iCLASS are registered trademarks of HID Global Corporation.

ASSA ABLOY is the global leader in door opening solutions, dedicated to satisfying end-user needs for security, safety and convenience.



Typical System Configuration



SARGENT
ASSA ABLOY

SARGENT® introduces The XC Series Cylinder Assembly



The SARGENT® XC Series

The SARGENT XC Series cylinder is a patent pending product that, like the patented SIGNATURE™ Series cylinder, is readily integrated into most existing SARGENT key systems.

As the keyways used for XC are the same as many existing key systems, it offers a highly cost effective means of achieving higher security without the need to change the existing keying system.

With its patent pending side milled key blanks, standard key biting is easily accomplished in the field with any industry standard duplicating or code machine. Key control is maintained, as the blanks will only be available from Authorized SARGENT distributors.

The XC series is available in most SARGENT locks, include Bored, Mortise, Auxiliary, Exit Devices, Keyswitches and Low Profile Access Control Products. Cylinder types include standard SARGENT and Small Format Interchangeable Core.

**For more information contact us at
1-800-727-5477 or www.sargentlock.com**

SARGENT Manufacturing Company • 100 Sargent Drive • P.O. Box 9725 • New Haven, CT 06536-0915 Phone: 800-727-5477 • Fax: 888-863-5054 • Website: www.sargentlock.com
SARGENT of Canada • Phone: 905-940-2040 • Fax: 905-940-3242 • Website: www.sargentcanada.ca

SARGENT® Manufacturing company is an ASSA ABLOY Group company. Founded in 1864, SARGENT® is a market leader in locksets, cylinders, door closers, exit devices, electro-mechanical products, and access control systems for new construction, renovation, and replacement applications. The company's customer base includes commercial construction, institutional and industrial markets.

The ASSA ABLOY Group is the world's leading manufacturer and supplier of locks and associated products, dedicated to satisfying end-user needs for security, safety and convenience.

An ASSA ABLOY Group company

KEY Features/Benefits

- It is a patent pending product that can not be copied and supplied by others
- Available in complete cylinder assemblies or as body/barrel (plug) components. The locking pin mechanism is supplied factory assembled in barrel (plug)
- The keyways used are the same as many existing standard SARGENT key systems so increased security can be added to existing systems without having to change the key system
- XC keys can be cut to operate non-XC cylinders in an existing or new system
- XC keys can be field cut on standard keying or duplicating machines
- Available with most SARGENT locks in standard or Small Format Interchangeable Core cylinders
- In SFIC format, new systems are available in the NEW SARGENT 4A & 4B keyways
- Minimal up charge for XC feature
- Two keys are supplied standard with each cylinder

SARGENT®

ASSA ABLOY

SARGENT® introduces The XC Series Cylinder Assembly



The SARGENT® XC Series

The SARGENT XC Series cylinder is a patent pending product that, like the patented SIGNATURE™ Series cylinder, is readily integrated into most existing SARGENT key systems.

As the keyways used for XC are the same as many existing key systems, it offers a highly cost effective means of achieving higher security without the need to change the existing keying system.

With its patent pending side milled key blanks, standard key biting is easily accomplished in the field with any industry standard duplicating or code machine. Key control is maintained, as the blanks will only be available from Authorized SARGENT distributors.

The XC series is available in most SARGENT locks, include Bored, Mortise, Auxiliary, Exit Devices, Keyswitches and Low Profile Access Control Products. Cylinder types include standard SARGENT and Small Format Interchangeable Core.

**For more information contact us at
1-800-727-5477 or www.sargentlock.com**

SARGENT Manufacturing Company • 100 Sargent Drive • P.O. Box 9725 • New Haven, CT 06536-0915 • Phone: 800-727-5477 • Fax: 888-863-5054 • Website: www.sargentlock.com
SARGENT of Canada • Phone: 905-940-2040 • Fax: 905-940-3242 • Website: www.sargentcanada.ca

SARGENT® Manufacturing company is an ASSA ABLOY Group company. Founded in 1864, SARGENT® is a market leader in locksets, cylinders, door closers, exit devices, electro-mechanical products, and access control systems for new construction, renovation, and replacement applications. The company's customer base includes commercial construction, institutional and industrial markets.

The ASSA ABLOY Group is the world's leading manufacturer and supplier of locks and associated products, dedicated to satisfying end-user needs for security, safety and convenience.

An ASSA ABLOY Group company

KEY Features/Benefits

- It is a patent pending product that can not be copied and supplied by others
- Available in complete cylinder assemblies or as body/barrel (plug) components. The locking pin mechanism is supplied factory assembled in barrel (plug)
- The keyways used are the same as many existing standard SARGENT key systems so increased security can be added to existing systems without having to change the key system
- XC keys can be cut to operate non-XC cylinders in an existing or new system
- XC keys can be field cut on standard keying or duplicating machines
- Available with most SARGENT locks in standard or Small Format Interchangeable Core cylinders
- In SFIC format, new systems are available in the NEW SARGENT 4A & 4B keyways
- Minimal up charge for XC feature
- Two keys are supplied standard with each cylinder

SARGENT®

ASSA ABLOY