

Replacing the lock only is far less complicated. We achieve the flush look on our lock by recessing them into the Roval cabinet on the lock plate, (lock assembly). In the attached, it is referenced as the lock assembly. **There is the adhesive lock plate that adheres to the cabinet. The lock assembly screws onto that with two nuts. To replace the lock, you simply unscrew the two nuts, remove the lock assembly and remove the nut holding the lock in the assembly and replace the lock. Once completed, the lock assembly is screwed back onto the adhesive plate and it is done.**

Lock Replacement Procedure for Roval Product Line

1. Inspection of the lock assemblies in the Roval product line will reveal 1 of 2 conditions similar to the two figures shown below:



In this picture the lock is in need of repair. The repair procedure now must be followed exactly to refurbish the unit to a saleable item.



When a lock is found in this condition an inspection must be made to determine its adhesion to the front door. Press face of lock with non-marking tool. Use 10 lbs of force for 15 seconds. If lock does not fall into unit, the test has been passed. NO repair needed.

Lock Replacement Procedure for Roval Product Line

2) Tools required to perform procedure are shown below



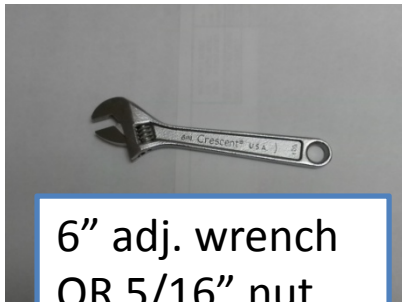
Clamp: 3
required
per lock



Razor
blade



Denatured
Alcohol, NOT
isopropyl



6" adj. wrench
OR 5/16" nut
Driver



Safety Gloves



Wiping Rag, lint
free & clean

Lock Replacement Procedure for Roval Product Line

Parts to be Used in Repair

Lock Washers

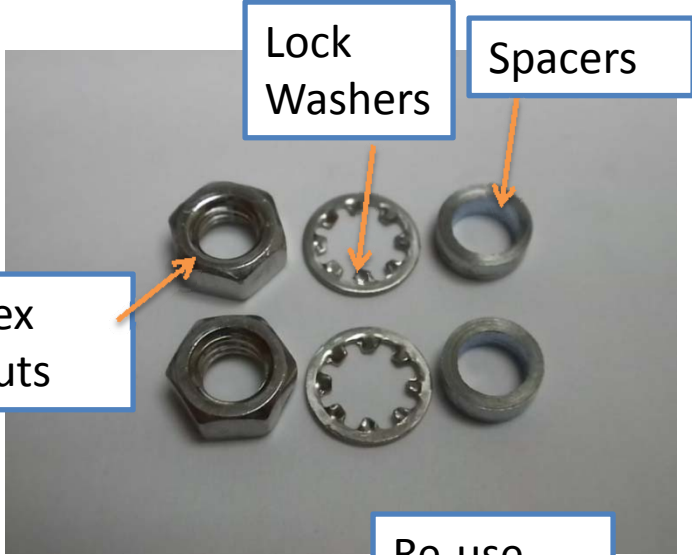
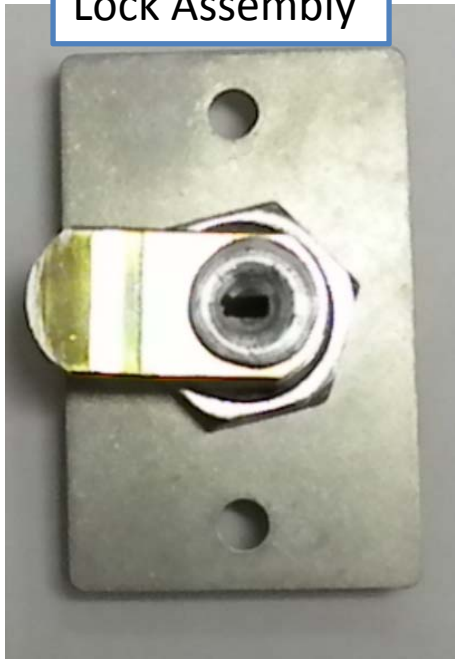
Spacers

Hex Nuts

Re-use Original Hardware

Reuse Original Lock Assembly

New Adhesive Coated Stud Plate



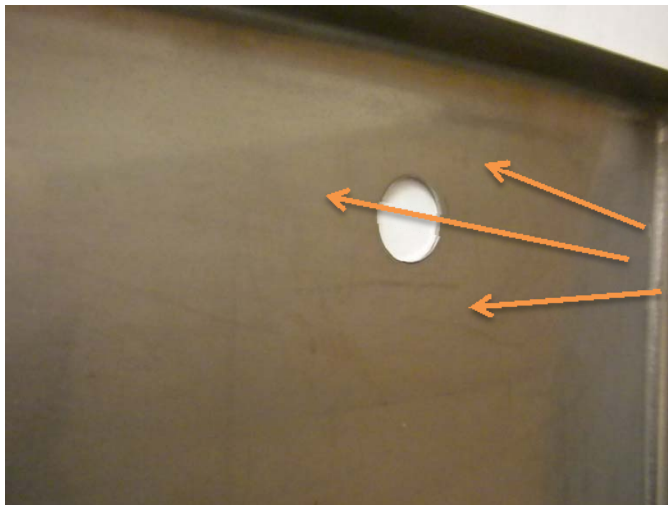
Lock Replacement Procedure for Roval Product Line



Scrape excessive tape residue from surface.



Soak area of rag ½" diameter with denatured alcohol.
Clean lock plate area until all residue is gone.



Lock area is now prepared for stud plate installation.
Install as soon as possible, before area is contaminated with foreign debris.

1. Remove failed lock assembly from inside of 20684 door.
2. Using razor blade remove remnants of double-sided sticky tape from around lock hole, inside unit. Fig. 2
3. Clean surface with denatured alcohol and rag in ventilated area. Fig. 1
4. Attached lock with all spacers provided to new stud mounting plate.
5. Align plate assembly from inside unit making sure the face of the lock is centered and key hole is level.
6. Holding in place carefully, mark at least 2 corners inside with a Sharpie to maintain a precise location.
7. Dis-assemble lock from studded plate, remove tape cover and press plate into position, carefully keeping plate aligned with Sharpie marks.
8. Using 3 welding clamps provided by engineering, clamp plate on center and next to both studs for **24** hours. Fig. 4
9. Remove clamps, reinstall spacers and lock

