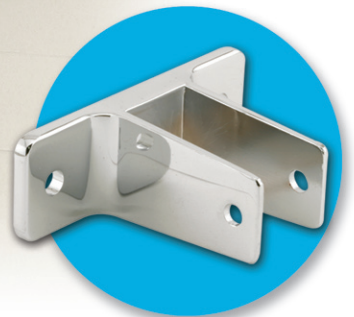


TOILET PARTITION

Replacement Hardware



PRIME-LINE[®]

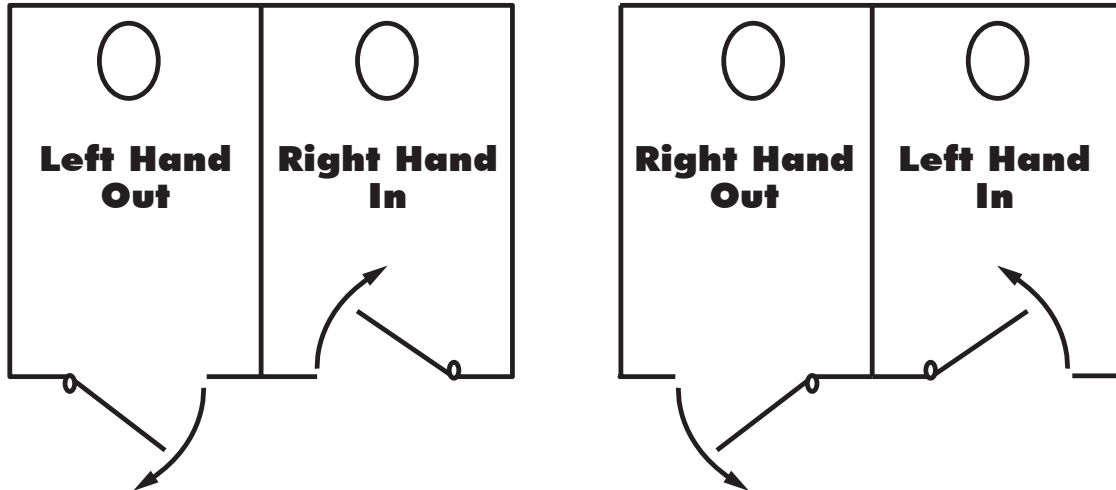
Originally established in 1978, we have been supplying Replacement Hardware for installing and maintaining TOILET PARTITIONS, in public restrooms, for over 30 years.

Our ever expanding inventory makes it possible to offer repair parts for all makes of toilet partitions. We pride ourselves in giving "Quick Response" to all of our customers needs, whether it be timely shipment of orders, quotation requests or sourcing and obtaining "Hard-To-Find" parts.

We are committed to Customer Satisfaction. Please give us the opportunity to prove it to you!

Guide for ordering Surface Mounted Hinges:

Handing Configurations

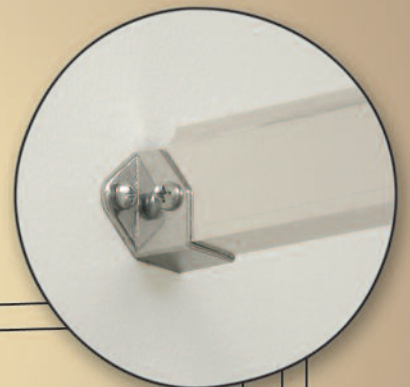


New!
Pre-Packaged Hardware

**Panel
& Pilaster
Packs**



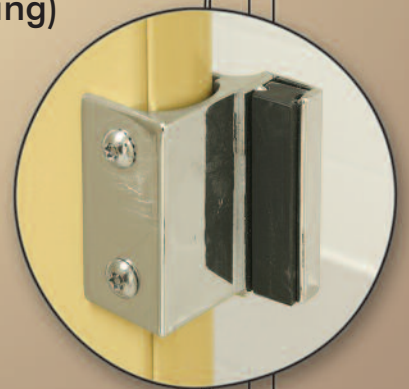
2-Ear Wall Bracket



Headrail Bracket



**Wrap-Around
Pivot Hinge (Top)**



**Strike / Keeper
(Outswing)**



**Slide Latch
(Outswing)**



Door Stop

**Door
Hardware
Packs**

PRIME-LINE®

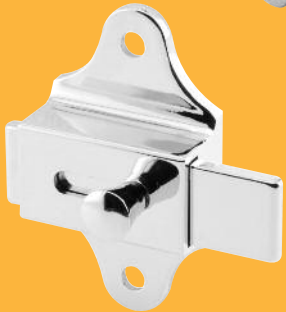
800-255-3505 • FAX: 909-880-2906

www.prime-line-products.com

Table Of Contents

	Page		Page
Alcove Clips	50	Pins	30
Anchors	44-45	Pintles	29
Cams	29	Pulls	17
Door Pulls	17	“Qwik-Fix” Kits	8-9
Door Stops	16-17	Shoes	41-43
Fasteners:		Stops	16-17
One-Way	53	Strikes:	
Six-Lobe	51-52	Cast Zamac & Stainless Steel	10-13
Headrail:		Stamped Stainless Steel	14-15
Aluminum Extruded.....	47	Tools	54
Brackets	49	Wall Brackets:	
End Plugs.....	48	Aluminum Extruded	39-41
Hinges:		Cast (Brass, Stainless, Zamac)	34-36
Flat Back.....	22	Stamped Stainless.....	37-38
Nylon Parts (Cam, Pintle, Pin)	29-30		
Piano.....	32-33	Partition Manufacturer’s:	
Surface.....	31-32	Table of Contents	54
Wrap Around Pivot (Round Edge)	23-24	Replacement Hardware.....	55-71
Wrap Around Pivot (Square Edge)	18-21		
Hook:		Index	72-74
Bumper.....	16		
Two Prong	16		
Inserts	25-28		
Keepers	10-15		
Latches:			
Concealed	6-7		
Slide	4-5		
Throw	5		
Paper Holders	50		
Pilaster:			
Anchor	44-46		
Anchor Pack.....	44-45		
Cap	46		
Shoe.....	41-43		
Support.....	43		

Surface Latches & Keepers



Description	Part No.	Finish - Alloy	Hole Center Spacing
Slide Latch	650-6602	Chrome Plated - Zamak	3-1/2"
	650-8297	Satin - Cast Stainless Steel	3-1/2"
Slide Latch	650-6596	Chrome Plated - Zamak	2-3/4"
	650-6599	Chrome Plated - Brass	2-3/4"
	650-7455	Satin - Cast Stainless Steel	2-3/4"
Slide Latch with Offset Bar	650-8618	Chrome Plated - Zamak	3-1/2"
	650-9486	Satin - Cast Stainless Steel	3-1/2"
Slide Latch with Offset Bar	650-7431	Chrome Plated - Zamak	2-3/4"
	650-9520	Satin - Cast Stainless Steel	2-3/4"
Slide Latch	650-7184	Chrome Plated - Zamak	2-5/8"
Slide Latch	650-9249	Satin - Stamped Stainless Steel	1-7/8"
Keeper	650-6252	Satin - Stamped Stainless Steel	7/8"

Surface Latches & Keepers

PRIME-LINE®

Description	Part No.	Finish - Alloy	Hole Center Spacing
Slide Latch with Keeper For Inswing Doors with fasteners	656-9873	Satin - Stamped Stainless Steel	—
	656-9874	Satin - Stamped Stainless Steel With Indicator & Pull	—
Keeper	650-9252	Satin - Stamped Stainless Steel	7/8"
Throw Latch with Keeper	650-9108	Chrome Plated - Brass	1-3/8"
Throw Latch	650-6608	Chrome Plated - Brass	3-1/2"



Special Surface Latches

Description	Part No.	Finish - Alloy	Hole Center Spacing
Latch / Keeper Assembly For Mills (In & Out) 2" high x 3" wide with Fasteners	656-2798	Chrome Plated - Zamak	—
	656-2799	Satin - Cast Stainless Steel	—
Latch Only with Fasteners	656-2908	Satin - Cast Stainless Steel	—
Slide Latch For Ampco, Santana & Others	650-7996	Satin - Stamped Stainless Steel	1-7/8"
Slide Latch For Santana & Others	650-8543	Clear Anodized - Aluminum	3-1/2"
	650-4027	Brite Dip - Aluminum	3-1/2"
	650-4051	Clear Anodized - Aluminum	3-1/2"



Concealed Latch Assemblies & Knob Sets



Description	Part No.	Finish - Alloy
Exterior entry and interior knob with straight bolt for Laminated Doors .	650-7528	Chrome Plated - Zamak
Exterior entry and handicap lever with straight bolt for Laminated Doors	650-8999	Chrome Plated - Zamak
Exterior entry and handicap knob with straight bolt for Laminated Doors	650-4023	Chrome Plated - Zamak
Exterior entry and interior knob with flat tip bolt for Steel Doors .	650-7112	Chrome Plated - Zamak
Exterior entry and handicap lever with flat tip bolt for Steel Doors .	650-8996	Chrome Plated - Zamak
Exterior entry and handicap knob with flat tip bolt for Steel Doors .	650-4024	Chrome Plated - Zamak
Exterior entry and interior knob with offset bolt for Steel Doors .	650-6614	Chrome Plated - Zamak
Exterior entry and handicap lever with offset bolt for Steel Doors (ADA conversion).	650-9000	Chrome Plated - Zamak
Exterior entry and handicap knob with offset bolt for Steel Doors (ADA conversion).	650-4025	Chrome Plated - Zamak
Slide latch for Steel Doors with fasteners ; as used by Mills	656-6797	Chrome Plated - Zamak
Slide latch with outside "in-use" indicator for Steel Doors ; as used by Metpar	650-6863	Chrome Plated - Zamak

Concealed Latch - Knob Sets

Description	Part No.	Finish - Alloy
Used by General & Knickerbocker	650-9093	Chrome Plated - Zamak
Handicap knob set 	650-4026	Chrome Plated - Zamak
Used by General & Knickerbocker	650-7630	Chrome Plated - Zamak
Used by Hadrian	650-8936	Chrome Plated - Zamak
Used by Hadrian	650-7804	Chrome Plated - Zamak
Used by Flush Metal Use with Latch Housing 650-6617	650-8759	Chrome Plated - Zamak
Used by Flush Metal Use with Latch Housing 650-6617	650-6908	Chrome Plated - Zamak
Latch housing	650-6617	Unplated - Zamak



"Qwik-Fix" Kits

For 1" **Round & Square Edge Doors**

- Replace missing or broken "concealed latches" with a surface mount slide latch
- Stainless steel "wrap-around" cover plate
- For square or round edge 1" doors (inswing or outswing)
- Includes necessary accessory parts
- Tamper-proof, 6 lobe with pin, fasteners including "Torx" hex bits for securing
- Hides unsightly holes in doors
- Increases strength and durability



Round Edge Cover Plate



Square Edge Cover Plate



Description

Part No.

Finish - Alloy

Inswing for 1" doors, **Round Edge**

656-1000

Chrome Plated - **Zamak**

Inswing for 1" doors, **Square Edge**

656-1003

Chrome Plated - **Zamak**

Outswing for 1" doors, **Round Edge**

656-1001

Chrome Plated - **Zamak**

Outswing for 1" doors, **Square Edge**

656-1004

Chrome Plated - **Zamak**

"Qwik-Fix" Kits

For 1" **Round & Square Edge Doors**

PRIME-LINE®

Description	Part No.	Finish - Alloy
Outswing for 1" doors, Round Edge, Includes pull	656-1002	Chrome Plated - Zamak
Outswing for 1" doors, Square Edge, Includes pull	656-1005	Chrome Plated - Zamak



- Stainless steel cover / mounting plate, hides damaged holes
- Stainless steel bumper / hook
- Stainless steel "tamper-proof", six lobe with pin, fasteners
- "Torx" hex bit for securing fasteners
- Offers increased strength and durability

Description	Part No.	Finish - Alloy
Bumper / Hook	656-1006	Chrome Plated - Zamak



Strikes and Keepers

For **Round Edge Posts**



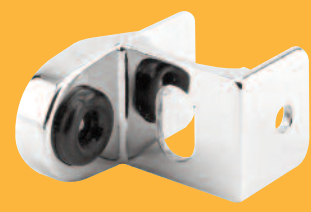
Description	Part No.	Finish - Alloy	Post Size
Inswing for Slide Latch	650-6515	Chrome Plated - Zamak	1-1/4"
In or Outswing for Concealed Latch with Flat Bolt	650-9933	Chrome Plated - Zamak	1-1/4"
Inswing for Throw Latch (Emergency Entrance)	650-6521	Chrome Plated - Zamak	1-1/4"
Outswing for Slide Latch	650-6518	Chrome Plated - Zamak	1-1/4"
In or Outswing for Concealed Latch with Round Bolt	650-9936	Chrome Plated - Zamak	1-1/4"
In or Outswing for Concealed Latch with Round Bolt	650-6530 650-9255	Chrome Plated - Zamak Satin - Cast Stainless Steel	1-1/4" 1-1/4"
In or Outswing for Concealed Latch with Flat Bolt	650-6533	Chrome Plated - Zamak	1-1/4"

Strikes and Keepers

For Round Edge Posts

PRIME-LINE®

Description	Part No.	Finish - Alloy	Post Size
Outswing for Slide Latch	650-9939	Chrome Plated - Zamak	1-1/4"
Inswing for Throw Latch (Emergency Entrance)	650-9942	Chrome Plated - Zamak	1-1/4"
In or Outswing for Concealed Latch with Round Bolt	650-9945	Chrome Plated - Zamak	1-1/4"



Strikes and Keepers

For Square Edge Posts

Description	Part No.	Finish - Alloy	Post Size
Inswing for Slide Latch	650-6482	Chrome Plated - Zamak	1-1/4"
	650-7461	Satin - Cast Stainless Steel	1-1/4"
	650-6485	Chrome Plated - Zamak	1-1/8"
	650-9588	Satin - Cast Stainless Steel	1"
	650-9246	Chrome Plated - Zamak	1"
Outswing for Slide Latch	650-6488	Chrome Plated - Zamak	1-1/4"
	650-8480	Satin - Cast Stainless Steel	1-1/4"
	650-9840	Chrome Plated - Zamak	1-1/8"
	650-9909	Satin - Cast Stainless Steel	1"
	650-9375	Chrome Plated - Zamak	1"
In or Outswing with Round Bolt	650-6500	Chrome Plated - Zamak	1-1/4"
	650-9912	Satin - Cast Stainless Steel	1-1/4"
	650-6501	Chrome Plated - Zamak	1"
	650-9915	Satin - Cast Stainless Steel	1"



Strikes and Keepers

For Square Edge Posts



Description	Part No.	Finish - Alloy	Post Size
Inswing Keeper for Throw Latch (Emergency Entrance)	650-2871	Chrome Plated - Zamak	1"
	650-6491	Chrome Plated - Zamak	1-1/4"
	650-8636	Satin - Cast Stainless Steel	1-1/4"
Inswing Keeper for Slide Latch - Wall Mount	650-6506	Chrome Plated - Zamak	—
	650-9468	Satin - Cast Stainless Steel	—
In or Outswing Keeper for Concealed Latch Wall Mount	650-6512	Chrome Plated - Zamak	—
	650-9918	Satin - Cast Stainless Steel	—
Outswing Keeper for Slide Latch Wall Mount	650-6509	Chrome Plated - Zamak	—
	650-8879	Satin - Cast Stainless Steel	—
Inswing Keeper for Throw Latch (Emergency Entrance) Wall Mount	650-6503	Chrome Plated - Zamak	—
	650-9231	Satin - Cast Stainless Steel	—
Inswing Keeper for Slide Latch	650-6536	Chrome Plated - Zamak	—
	650-8744	Satin - Cast Stainless Steel	—

Strikes and Keepers

For Square Edge Posts

PRIME-LINE®

Description	Part No.	Finish - Alloy	Post Size
In or Outswing for Slide Latch	650-6542	Chrome Plated - Zamak	—
	650-9006	Satin - Cast Stainless Steel	—
Inswing for Throw Latch (Emergency Entrance)	650-6539	Chrome Plated - Zamak	—
	650-9921	Satin - Cast Stainless Steel	—
Inswing for Throw Latch 2 Piece Set (Emergency Entrance)	650-2864	Chrome Plated - Zamak	—
Outswing for Slide Latch - 2 Piece Set	650-2759	Chrome Plated - Zamak	—
In or Outswing for Concealed Latch with Round Bolt	650-7633	Chrome Plated - Zamak	1-1/4"
	650-9924	Satin - Cast Stainless Steel	1-1/4"
Outswing for Slide Latch	650-6494	Chrome Plated - Zamak	1-1/4"
	650-9927	Satin - Cast Stainless Steel	1-1/4"
Inswing for Throw Latch (Emergency Entrance)	650-6497	Chrome Plated - Zamak	1-1/4"
	650-9930	Satin - Cast Stainless Steel	1-1/4"
In or Outswing for 1-1/4" doors with Concealed Latches with Round Bolt	650-9600	Chrome Plated - Zamak	1-1/4"



Strikes and Keepers

For Square Edge Posts



Description	Part No.	Finish - Alloy	Door Size
Inswing	650-9948	Satin - Stamped Stainless Steel	Specify
Outswing	650-9951	Satin - Stamped Stainless Steel	Specify
Inswing (Emergency Entrance)	650-9954	Satin - Stamped Stainless Steel	Specify
Inswing Keeper	650-8223	Satin - Stamped Stainless Steel	ANY
Inswing or Outswing	650-8226	Satin - Stamped Stainless Steel	ANY
Inswing for 1/2" doors	650-9957	Satin - Stamped Stainless Steel	1/2"
Inswing for 3/4" doors	650-9960	Satin - Stamped Stainless Steel	3/4"
Inswing for 7/8" doors	650-9963	Satin - Stamped Stainless Steel	7/8"
Inswing for 1" doors	650-9966	Satin - Stamped Stainless Steel	1"
Inswing for 1-1/8" doors	650-9972	Satin - Stamped Stainless Steel	1-1/8"

Strikes and Keepers

For Square Edge Posts

PRIME-LINE®

Description	Part No.	Finish - Alloy	Door Size
Outswing for 1/2" doors	650-9975	Satin - Stamped Stainless Steel	1/2"
Outswing for 3/4" doors	650-9978	Satin - Stamped Stainless Steel	3/4"
Outswing for 7/8" doors	650-9981	Satin - Stamped Stainless Steel	7/8"
Outswing for 1" doors	650-9984	Satin - Stamped Stainless Steel	1"
Outswing for 1-1/8" doors	650-9987	Satin - Stamped Stainless Steel	1-1/8"
Outswing for 3/4" doors	650-9990	Satin - Stamped Stainless Steel	3/4"
Outswing for 1" doors	650-9837	Satin - Stamped Stainless Steel	1"
Outswing For 1" Doors	650-9993	Satin - Stamped Stainless Steel	—
Inswing Keeper / Adapter	650-9969	Satin - Stamped Stainless Steel	—



Description	Part No.	Finish - Alloy	Hole Spacing
For use on all stamped stainless steel strikes & keepers	650-7996	Satin - Stamped Stainless Steel	1-7/8"
Inswing Slide Latch	650-9249	Satin - Stamped Stainless Steel	1-7/8"
Keeper	650-6252	Satin - Stamped Stainless Steel	7/8"



Coat Hooks and Bumpers



Description	Part No.	Finish - Alloy	Projection
Hook	650-6635	Chrome Plated - Zamak	3"
	650-9537	Satin - Cast Stainless Steel	3"



Hook for General	650-2770	Chrome Plated - Zamak	1-9/16"
-------------------------	----------	------------------------------	---------



Hook and bumper	650-6626	Chrome Plated - Zamak	3"
Supplied with 1/4" holes	650-7452	Satin - Cast Stainless Steel	3"
	650-4057	Satin - Cast Stainless Steel	3"
Bumper only	650-6866	Black - Rubber	—



Hook and bumper	650-6632	Chrome Plated - Zamak	3-1/2"
-----------------	----------	------------------------------	--------



Hook and bumper	650-7214	Chrome Plated - Zamak	3"
-----------------	----------	------------------------------	----



Hook and bumper	650-8726	Satin - Stamped Stainless Steel	3"
-----------------	----------	--	----



Extention Hook	650-8727	Satin - Stamped Stainless Steel	1"
----------------	----------	--	----

Door Stops

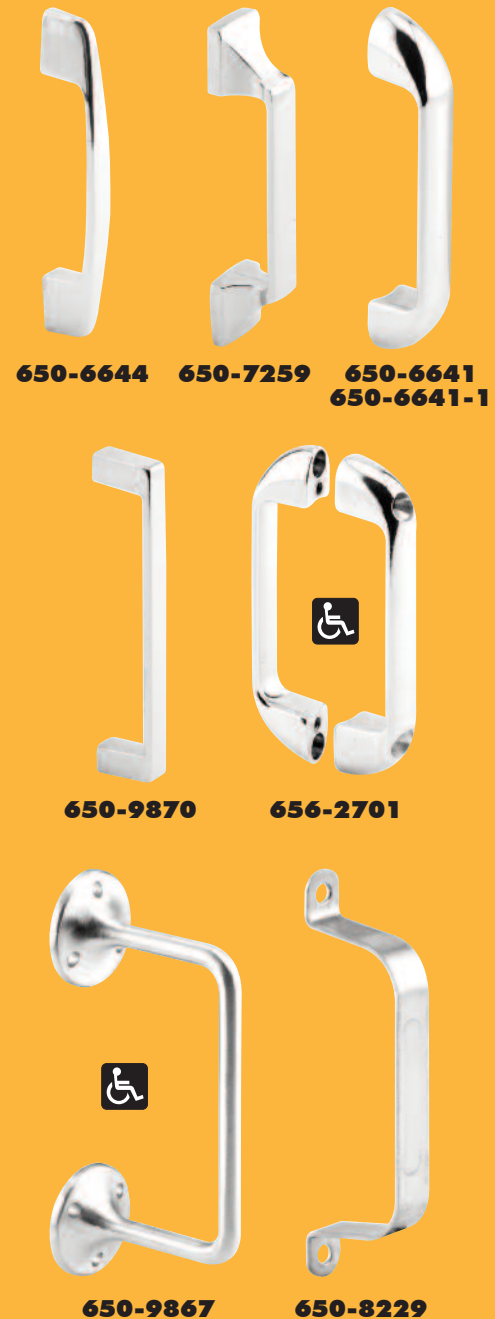
PRIME-LINE®

Description	Part No.	Finish - Alloy	Hole Center Spacing
2" Projection	650-6638	Chrome Plated - Zamak	—
	650-6638-1	Satin - Zamak	—
	650-9492	Satin - Cast Stainless Steel	—
	650-4020	Satin - Stamped Stainless Steel	—
	650-4020-1	Satin - Stamped Stainless Steel	—
Post mounted 2-1/2" Projection	650-8519	Chrome Plated - Brass	2-5/16"
	650-8522	Satin - Cast Stainless Steel	2-5/16"



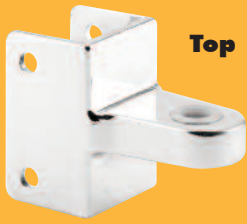
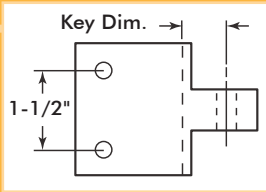
Door Pulls

Description	Part No.	Finish - Alloy	Hole Center Spacing
Pull	650-6644	Chrome Plated - Zamak	2-3/4"
	650-9135	Satin - Cast Stainless Steel	2-3/4"
Pull	650-7259	Chrome Plated - Zamak	2-5/8"
Pull	650-6641	Chrome Plated - Zamak	3-1/2"
	650-6641-1	Satin - Zamak	3-1/2"
	650-9405	Satin - Cast Stainless Steel	3-1/2"
Pull	650-9870	Chrome Plated - Zamak	4"
Double pull Packaged with fasteners	656-2701	Chrome Plated - Zamak	3-1/2"
High-rise pull 3" Projection	650-9867	Satin - Cast Stainless Steel	—
Pull	650-8229	Satin - Stamped Stainless Steel	5"



Post Mounted Gravity Pivot Hinges

Square Edge



Top



Bottom



Top



Bottom



Top



Bottom

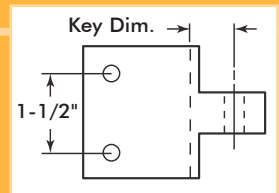
Description	Mount	Part No.	Finish - Alloy	Key Dim.	Post Size
Pivot hinge as used by Ampco	Top	650-9999	Chrome Plated - Zamak	1-1/4"	1-1/4"
	Top	650-1002	Satin - Cast Stainless Steel	1-1/4"	1-1/4"
	Bottom	650-1056	Chrome Plated - Zamak	1-1/4"	1-1/4"
	Bottom	650-1059	Satin - Cast Stainless Steel	1-1/4"	1-1/4"
Pivot hinge as used by Global	Top	650-7939	Chrome Plated - Zamak	1-5/32"	1-1/4"
	Top	650-1005	Satin - Cast Stainless Steel	1-5/32"	1-1/4"
	Bottom	650-1062	Chrome Plated - Zamak	1-7/32"	1-1/4"
	Bottom	650-1065	Satin - Cast Stainless Steel	1-7/32"	1-1/4"
Pivot hinge as used by Fiat	Top	650-8399	Chrome Plated - Zamak	1-9/32"	1-1/4"
	Top	650-1008	Satin - Cast Stainless Steel	1-9/32"	1-1/4"
	Bottom	650-8396	Chrome Plated - Zamak	1-9/32"	1-1/4"
	Bottom	650-1068	Satin - Cast Stainless Steel	1-9/32"	1-1/4"
Pivot hinge as used by Accurate	Top	650-8492	Chrome Plated - Zamak	1-7/32"	1-1/4"
	Top	650-1011	Satin - Cast Stainless Steel	1-7/32"	1-1/4"
	Bottom	650-1083	Chrome Plated - Zamak	1-7/32"	1-1/4"
	Bottom	650-1086	Satin - Cast Stainless Steel	1-7/32"	1-1/4"
Pivot hinge as used for General Applications (G-1/2)	Top	650-1020	Chrome Plated - Zamak	1-9/32"	1/2"
	Bottom	650-1071	Chrome Plated - Zamak	1-9/32"	1/2"

Post Mounted Gravity Pivot Hinges

Square Edge

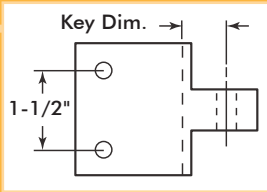
PRIME-LINE®

Description	Mount	Part No.	Finish - Alloy	Key Dim.	Post Size
Pivot hinge as used by Flush Metal	Top	650-1014	Chrome Plated - Zamak	1-7/32"	1-1/4"
	Top	650-1017	Satin - Cast Stainless Steel	1-7/32"	1-1/4"
	Bottom	650-1074	Chrome Plated - Zamak	1-7/32"	1-1/4"
	Bottom	650-1077	Satin - Cast Stainless Steel	1-7/32"	1-1/4"
Pivot hinge as used for General Applications (G-4)	Top	650-8840	Chrome Plated - Zamak	1-9/32"	1"
	Top	650-1023	Satin - Cast Stainless Steel	1-9/32"	1"
	Bottom	650-8843	Chrome Plated - Zamak	1-9/32"	1"
	Bottom	650-9594	Satin - Cast Stainless Steel	1-9/32"	1"
Pivot hinge as used by General and American Sanitary	Top	650-6551	Chrome Plated - Zamak	1-9/32"	1-1/4"
	Top	650-7467	Satin - Cast Stainless Steel	1-9/32"	1-1/4"
	Bottom	650-6557	Chrome Plated - Zamak	1-9/32"	1-1/4"
	Bottom	650-1080	Satin - Cast Stainless Steel	1-9/32"	1-1/4"
Pivot hinge as used by Knickerbocker & General	Top	650-7660	Chrome Plated - Zamak	1-3/8"	1-1/4"
	Top	650-1029	Satin - Cast Stainless Steel	1-3/8"	1-1/4"
	Bottom	650-7651	Chrome Plated - Zamak	1-3/8"	1-1/4"
	Bottom	650-1089	Satin - Cast Stainless Steel	1-3/8"	1-1/4"



Post Mounted Gravity Pivot Hinges

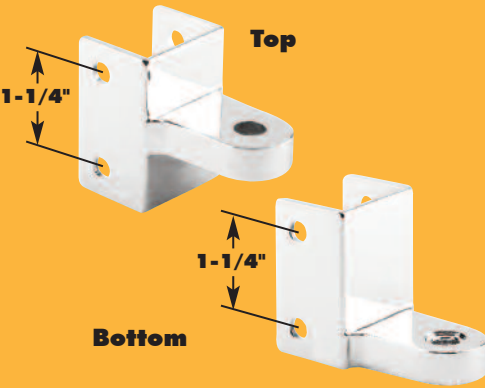
Square Edge



Top

Bottom

Description	Mount	Part No.	Finish - Alloy	Key Dim.	Post Size
Pivot hinge as used by Metpar	Top	650-1032	Chrome Plated - Zamak	1-3/32"	1-1/4"
	Bottom	650-1035	Chrome Plated - Zamak	1-3/32"	1-1/4"
Pivot hinge as used by Sanymetal	Top	650-7067	Chrome Plated - Zamak	1-3/32"	1-1/4"
	Bottom	650-7070	Chrome Plated - Zamak	1-3/32"	1-1/4"
Pivot hinge as used by Knickerbocker	Top	650-9030	Chrome Plated - Zamak	1-15/32"	1-1/4"
	Bottom	650-9027	Chrome Plated - Zamak	1-15/32"	1-1/4"
Pivot hinge as used by Hadrian	Top	650-9228	Chrome Plated - Zamak	1-3/16"	1-1/4"
	Bottom	650-2802	Chrome Plated - Zamak	1-3/16"	1-1/4"



Top

Bottom



Top

Bottom



Top

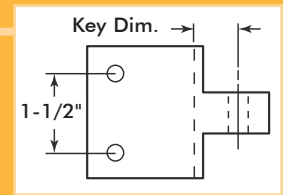
Bottom

Post Mounted Gravity Pivot Hinges

Square Edge

PRIME-LINE®

Description	Mount	Part No.	Finish - Alloy	Key Dim.	Post Size
Pivot hinge as used by All-American	Top	650-9660	Chrome Plated - Zamak	1-1/4"	1-1/4"
	Bottom	650-9663	Chrome Plated - Zamak	1-1/4"	1-1/4"
Pivot hinge as used by Capital and Global	Top / Bottom	650-7543	Chrome Plated - Zamak	1-9/32"	1-1/4"
Pivot hinge as used for M-2 style	Top / Bottom	650-8912	Chrome Plated - Zamak	1-9/32"	1"



Top



Bottom



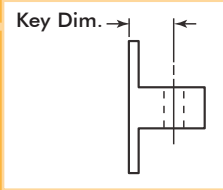
Top / Bottom



Top / Bottom

Wall Mounted Gravity Pivot Hinges

Flat Back



Description	Mount	Part No.	Finish - Alloy	Key Dim.
Pivot hinge as used by Accurate	Top	650-1038	Chrome Plated - Zamak	1-7/32"
	Top	650-1041	Satin - Cast Stainless Steel	1-7/32"
	Bottom	650-1026	Chrome Plated - Zamak	1-7/32"
	Bottom	650-1092	Satin - Cast Stainless Steel	1-7/32"
Pivot hinge as used by Ampco	Top	650-9360	Chrome Plated - Zamak	1-1/4"
	Top	650-1044	Satin - Cast Stainless Steel	1-1/4"
	Bottom	650-9363	Chrome Plated - Zamak	1-1/4"
	Bottom	650-1095	Satin - Cast Stainless Steel	1-1/4"
Pivot hinge as used for General Applications (G-3)	Top	650-8771	Chrome Plated - Zamak	1-9/32"
	Top	650-1047	Satin - Cast Stainless Steel	1-9/32"
	Bottom	650-1098	Chrome Plated - Zamak	1-9/32"
	Bottom	650-1101	Satin - Cast Stainless Steel	1-9/32"
Pivot hinge as used by Knickerbocker & General	Top	650-9234	Chrome Plated - Zamak	1-13/32"
	Bottom	650-9237	Chrome Plated - Zamak	1-13/32"



Top



Bottom



Top



Bottom



Top



Bottom



Top



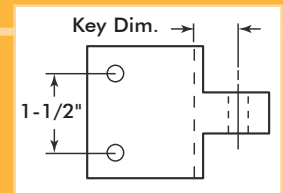
Bottom

Post Mounted Gravity Pivot Hinges

Round Edge

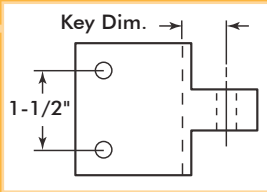
PRIME-LINE®

Description	Mount	Part No.	Finish - Alloy	Key Dim.	Post Size
Pivot hinge as used by Flush Metal	Top	650-6545	Chrome Plated - Zamak	1-3/32"	1-1/4"
	Top	650-8489	Satin - Cast Stainless Steel	1-3/32"	1-1/4"
	Bottom	650-6548	Chrome Plated - Zamak	1-5/32"	1-1/4"
	Bottom	650-9318	Satin - Cast Stainless Steel	1-5/32"	1-1/4"
Pivot hinge as used by Sanymetal	Top	650-7169	Chrome Plated - Zamak	1-1/16"	1-1/4"
	Bottom	650-7172	Chrome Plated - Zamak	1-1/16"	1-1/4"
Pivot hinge as used by Knickerbocker and General	Top	650-7265	Chrome Plated - Zamak	1-13/32"	1-1/4"
	Bottom	650-7262	Chrome Plated - Zamak 1-1/8" Hole Centers	1-13/32"	1-1/4"
Pivot hinge as used by Metpar	Top	650-7217	Chrome Plated - Zamak	1-1/16"	1-1/4"
	Bottom	650-7220	Chrome Plated - Zamak	1-3/32"	1-1/4"



Post Mounted Gravity Pivot Hinges

Round Edge



Top



Bottom



Top



Bottom



Top



Bottom



Top



Bottom

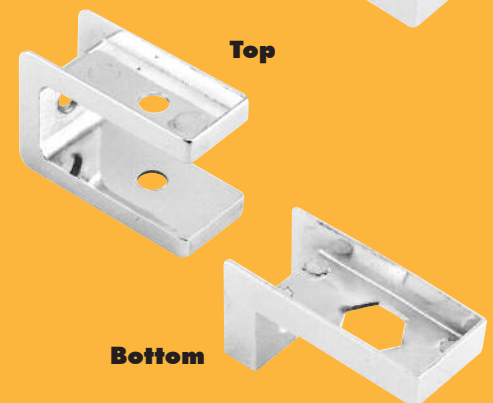
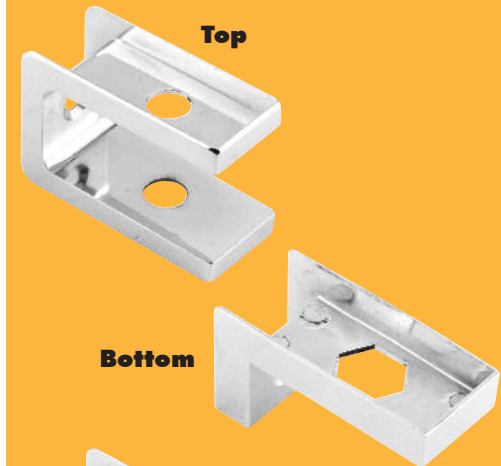
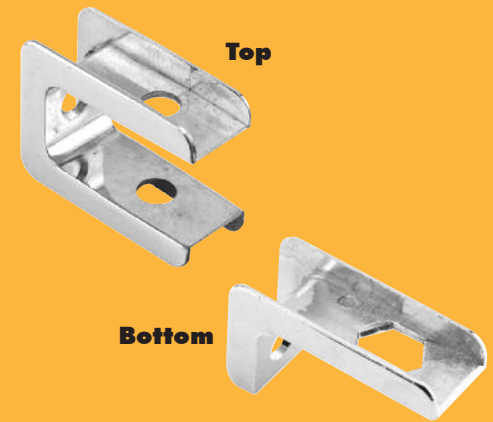
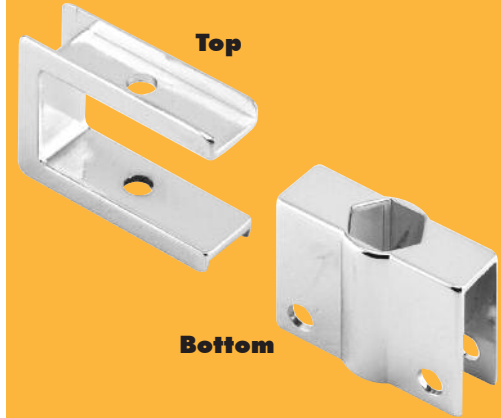
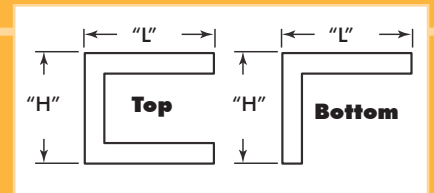
Description	Mount	Part No.	Finish - Alloy	Key Dim.	Post Size
Pivot hinge as used by Hadrian	Top	650-9072	Chrome Plated - Zamak	1-1/4"	1-1/4"
	Bottom	650-9075	Chrome Plated - Zamak	1-1/4"	1-1/4"
Pivot hinge assembly as used by Hadrian	Top	656-7777	Chrome Plated - Zamak	1-3/32"	ANY
	Bottom	656-7780	Chrome Plated - Zamak	1-3/32"	ANY
Pivot hinge as used by All-American	Top	650-7040	Chrome Plated - Zamak	1-3/32"	1-1/4"
	Bottom	650-7283	Chrome Plated - Zamak	1-5/32"	1-1/4"
Pivot hinge as used by Accurate	Top	650-7549	Chrome Plated Zamak	1-13/32"	1-1/4"
	Bottom	650-7124	Chrome Plated Zamak	1-13/32"	1-1/4"

Door Inserts

For Square Edge Doors

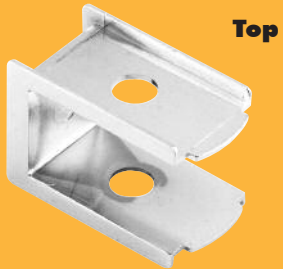
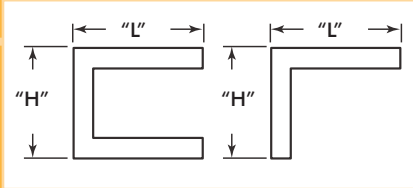
PRIME-LINE®

Door Size	Mount	Part No.	Finish - Alloy	End Style	"L"	"H"
1/2"	Top	650-2454	Chrome Plated - Zamak	Open	2-1/16"	1-1/2"
1/2"	Bottom	650-2466	Chrome Plated - Zamak	Open	2"	1-1/2"
3/4"	Top	650-9741	Chrome Plated - Zamak	Open	2-11/32"	1-3/4"
3/4"	Bottom	650-2849	Chrome Plated - Zamak	Open	2-11/32"	1-3/8"
7/8"	Top	650-7133	Chrome Plated - Zamak	Closed	2-3/8"	1-5/8"
7/8"	Bottom	650-7130	Chrome Plated - Zamak	Closed	2-5/16"	1-3/16"
7/8"	Top	650-2460	Chrome Plated - Zamak	Closed	2-3/8"	1-5/8"
Used by Ampco						
7/8"	Bottom	650-2481	Chrome Plated - Zamak	Closed	2-5/16"	1-3/16"

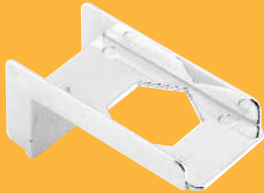


Door Inserts

For Square Edge Doors



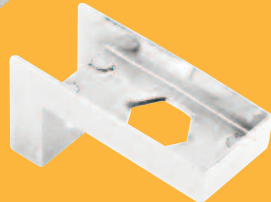
Top



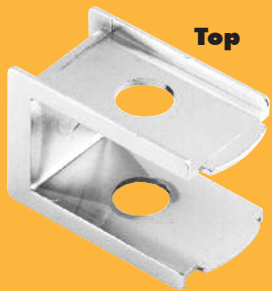
Bottom



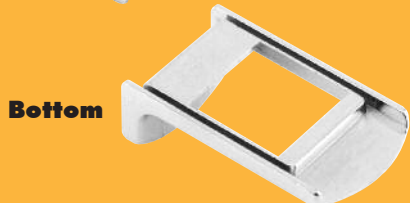
Top



Bottom



Top



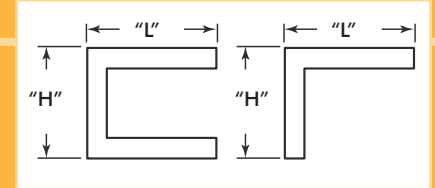
Bottom

Door Size	Mount	Part No.	Finish - Alloy	End Style	"L"	"H"
1"	Top	650-7349	Chrome Plated - Zamak	Open	2-7/32"	1-11/16"
1"	Bottom for large cam	650-2472	Chrome Plated - Zamak	Open	2-11/32"	1-3/16"
1"	Top	650-2457	Chrome Plated - Zamak	Closed	2-15/32"	2-5/32"
1"	Bottom	650-2475	Chrome Plated - Zamak	Closed	2-1/2"	1-3/8"
1"	Top	650-2463	Chrome Plated - Zamak	Open	2-3/16"	1-5/8"
Used by Fiat						
1"	Bottom	650-2484	Chrome Plated - Zamak	Open	2-1/8"	13/16"

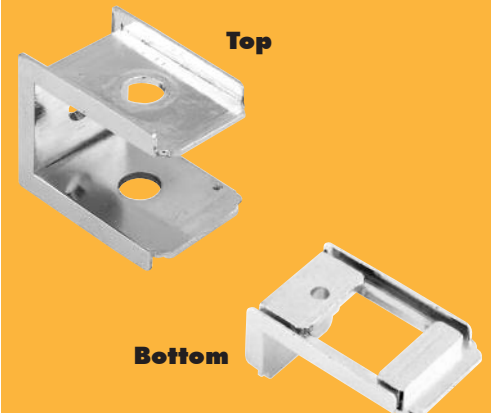
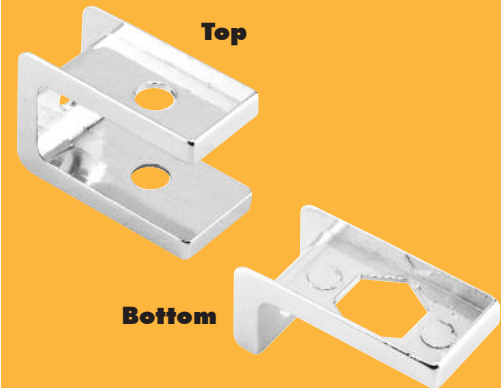
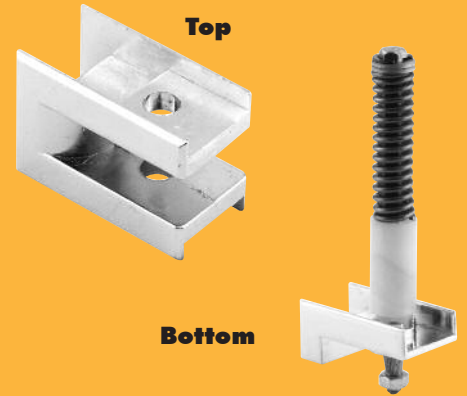
Door Inserts

For Square Edge Doors

PRIME-LINE®

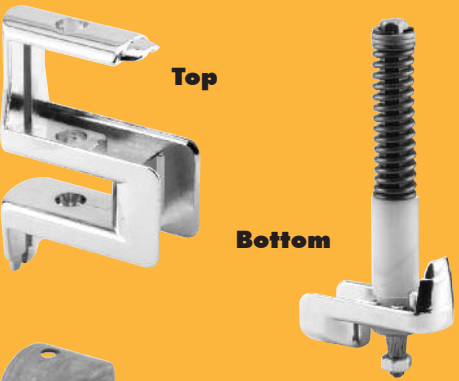
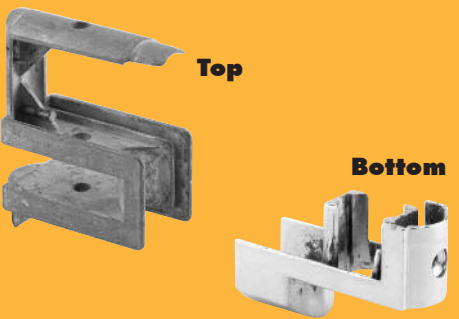
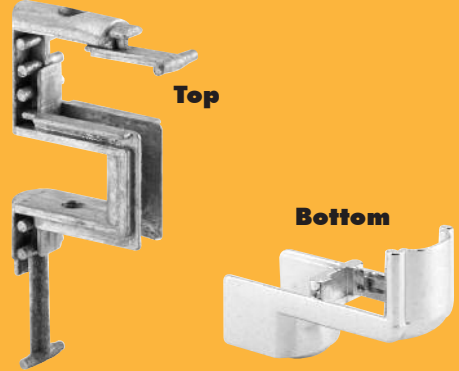
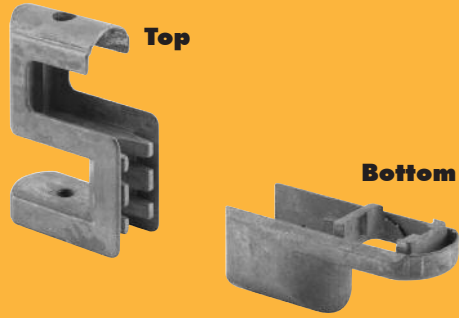


Door Size	Mount	Part No.	Finish - Alloy	End Style	"L"	"H"
1"	Top & Bottom	650-2487	Chrome Plated - Zamak	Open	2-5/16"	2-3/16"
Used by Capital & Globe						
1"	Top	650-7064	Chrome Plated - Zamak	Open	2-9/32"	1-5/8"
Used by Sanymetal						
1"	Bottom	650-7061	Chrome Plated - Zamak	Open	2-5/16"	1"
1"	Top	650-6587	Chrome Plated - Zamak	Closed	2-11/32"	1-5/8"
Used by Ampco & General						
1"	Bottom	650-6593	Chrome Plated - Zamak	Closed	2-5/16"	1-3/16"
1-1/4"	Top	650-9849	Chrome Plated - Zamak	Open	2-9/32"	1-23/32"
Used by Shanahan						
1-1/4"	Bottom	650-2469	Chrome Plated - Zamak	Open	2-1/4"	1-1/8"



Door Inserts

For Round Edge Doors



As Used by	Door Size	Mount	Part No.	Finish - Alloy
Ampco & Metpar	1"	Top	650-8780	Chrome Plated - Zamak
	1"	Top	650-7669	Unplated - Zamak
	1"	Bottom	650-7235	Chrome Plated - Zamak
	1"	Bottom	650-7328	Unplated - Zamak
Flush Metal	1"	Top	650-9462	Chrome Plated - Zamak
	1"	Top	650-8972	Unplated - Zamak
	1"	Bottom	650-9465	Chrome Plated - Zamak
	1"	Bottom	650-7822	Unplated - Zamak
General & Knickerbocker	1"	Top	650-7624	Unplated - Zamak
	1"	Bottom	650-7618	Unplated - Zamak
Sanymetal	1"	Top	650-7163	Chrome Plated - Zamak
	1"	Top	650-2490	Unplated - Zamak
	1"	Bottom	650-6902	Chrome Plated - Zamak
	1"	Bottom	650-2493	Unplated - Zamak
Hadrian	1"	Top	650-9003	Unplated - Zamak
	1"	Bottom	650-9267	Unplated - Zamak

Pivot Hinge Accessories

PRIME-LINE®

Cams

Part No.	Description
650-7232	Square - Unshaved
650-7615	Square - Shaved
650-6923	Round - For 5/8" pintle
650-7142	Round - For 1/2" pintle
650-7449	Round - Keylock for 1/2" pintle
650-7534	Set for (M) hinges



650-7232



650-7615



650-6923



650-7142



650-7449



650-7534

Pintles

Part No.	Description
650-6986	5/8" Diameter
650-7145	1/2" Diameter
650-7106	5/8" Diameter (Knickerbocker)
650-7534	Set for (M) hinges



650-6986



650-7145



650-7106



650-7534

Candle Cams

Part No.	Description
650-7672	For Metpar
650-8540	For General
650-7205	For Knickerbocker (Steel Doors)



650-7672



650-8540



650-7205

Pivot Hinge Accessories

Hinge Pins



Part No.	Description	Dimension
650-8017	Knurled Steel Used by Ampco	7/32" x 3-1/2"
650-6875	Threaded Steel Used by Ampco & Metpar	3/8" x 3"
650-8402	Steel-Zinc Plated Used by Fiat	7/16" x 3-5/16"
650-7663	Knurled Steel Used by General	1/4" x 2-3/4"
650-6911	Knurled Nylon Used by Sanymetal	3/8" x 2-1/2"
650-2601	Knurled Stainless Steel Used by Sanymetal	3/8" x 2-1/2"
650-7046	Knurled Steel Used by All American	5/16" x 3"
650-7226	Steel Used by Shanahan	3/8" x 3.70"
650-7055	Knurled Steel	3/8" x 3-1/2"
650-2604	Stainless Steel	3/8" x 3-1/2"



Surface Mount Hinge Parts

Part No.	Description
650-7037	For Round Barrel Hinge Set includes: Caps, Pin, Pintle, Cam and Retaining Ring
650-7849	For Square Barrel Hinge Set includes: Pintle, Pintle Housing, Cam, Pin Assembly, Pin Housing and Caps

Integral Hinge Set

PRIME-LINE®

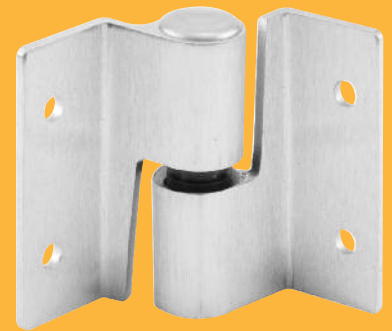
Part No.	Description
650-7038	Nylon top and bottom assembly with spring (with 3 stainless steel set screws)



Surface Mounted Hinges

Pre-packaged with fasteners

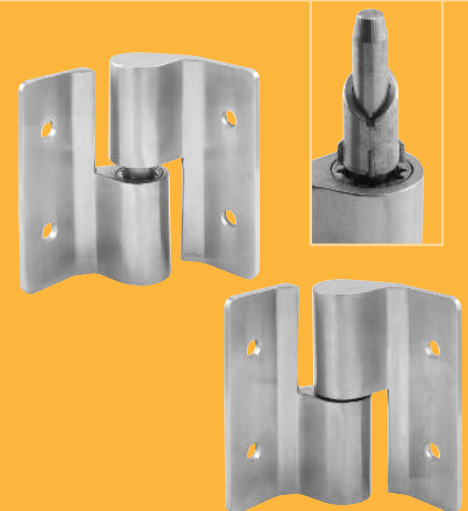
Part No.	Finish - Alloy	Description	Height	Thick
Two Hinge Sets*				
656-9009*	Satin - Stamped Stainless Steel	R.H. In or L.H. Out	3"	3/32"
656-9378*	Satin - Stamped Stainless Steel	R.H. In or L.H. Out	3"	1/8"
656-8621*	Satin - Cast Stainless Steel	R.H. In or L.H. Out	3"	1/8"
656-1977	Satin - Cast Stainless Steel	Top Hinge Only	3"	1/8"
656-1980	Satin - Cast Stainless Steel	Bottom Hinge Only	3"	1/8"
656-9012*	Satin - Stamped Stainless Steel	L.H. In or R.H. Out	3"	3/32"
656-9381*	Satin - Stamped Stainless Steel	L.H. In or R.H. Out	3"	1/8"
656-8056*	Satin - Cast Stainless Steel	L.H. In or R.H. Out	3"	1/8"
656-1983	Satin - Cast Stainless Steel	Top Hinge Only	3"	1/8"
656-1986	Satin - Cast Stainless Steel	Bottom Hinge Only	3"	1/8"
Three Hinge Sets				
656-1989	Satin - Cast Stainless Steel	R.H. In or L.H. Out	3"	1/8"
656-9552	Satin - Cast Stainless Steel	L.H. In or R.H. Out	3"	1/8"
2 Top Hinges and 1 Bottom Hinge				



Surface Mounted Hinges

Heavy Duty

Part No.	Finish - Alloy	Description	Height	Thick
Two Hinge Sets				
650-8624	Satin - Cast Stainless Steel	R.H. In or L.H. Out	3-1/8"	1/8"
650-8625	Satin - Cast Stainless Steel	L.H. In or R.H. Out	3-1/8"	1/8"
Three Hinge Sets				
650-8626	Satin - Cast Stainless Steel	R.H. In or L.H. Out	3-1/8"	1/8"
650-8627	Satin - Cast Stainless Steel	L.H. In or R.H. Out	3-1/8"	1/8"
2 Top Hinges and 1 Bottom Hinge				



Surface Mounted Hinges

Heavy Duty (Pre-packaged with fasteners)



Part No.	Finish - Alloy	Description	Height	Thick
Two Hinge Sets				
656-8237	Satin - Stamped Stainless Steel	R.H. In or L.H. Out	3-3/8"	1/8"
656-8240	Satin - Stamped Stainless Steel	L.H. In or R.H. Out	3-3/8"	1/8"
656-2870	Satin - Stamped Stainless Steel	R.H. In or L.H. Out	2-7/8"	1/8"
656-2869	Satin - Stamped Stainless Steel	L.H. In or R.H. Out	2-7/8"	1/8"

Surface Mounted Hinges

Pre-packaged with fasteners



Part No.	Finish - Alloy	Description	Height	Thick
Two Hinge Sets*				
656-6575*	Chrome Plated - Brass	R.H. In or L.H. Out	3"	3/32"
656-9069*	Polished - Brass	R.H. In or L.H. Out	3"	3/32"
656-1992	Chrome Plated - Brass	Top Hinge Only	3"	3/32"
656-1995	Polished - Brass	Top Hinge Only	3"	3/32"
656-1998	Chrome Plated - Brass	Bottom Hinge Only	3"	3/32"
656-2001	Polished - Brass	Bottom Hinge Only	3"	3/32"
656-6572*	Chrome Plated - Brass	L.H. In or R.H. Out	3"	3/32"
656-9066*	Polished - Brass	L.H. In or R.H. Out	3"	3/32"
656-2007	Chrome Plated - Brass	Top Hinge Only	3"	3/32"
656-2010	Polished - Brass	Top Hinge Only	3"	3/32"
656-2013	Chrome Plated - Brass	Bottom Hinge Only	3"	3/32"
656-2016	Polished - Brass	Bottom Hinge Only	3"	3/32"

Continuous (Piano) Hinges

16 gauge (1/8" pin)



Description	Part No.	Finish - Alloy	Width	Length
R.H. In or L.H. Out with spring	650-4048	Satin - Stamped Stainless Steel	3"	54"
L.H. In or R.H. Out with spring	650-4049	Satin - Stamped Stainless Steel	3"	54"
No Spring	650-9225	Satin - Stamped Stainless Steel	3"	57-1/2"
R.H. In or L.H. Out with spring	650-9399	Satin - Stamped Stainless Steel	3"	57-1/2"
L.H. In or R.H. Out with spring	650-9258	Satin - Stamped Stainless Steel	3"	57-1/2"
R.H. In or L.H. Out with spring	650-9406	Satin - Stamped Stainless Steel	3"	71-1/2"
L.H. In or R.H. Out with spring	650-9407	Satin - Stamped Stainless Steel	3"	71-1/2"

Continuous (Piano) Hinges

14 gauge (1/4" pin)

PRIME-LINE®

Description	Part No.	Finish - Alloy	Width	Length
R.H. In or L.H. Out with spring	650-9409	Satin - Stamped Stainless Steel	3"	57"
L.H. In or R.H. Out with spring	650-9410	Satin - Stamped Stainless Steel	3"	57"

For special 7 hole installations

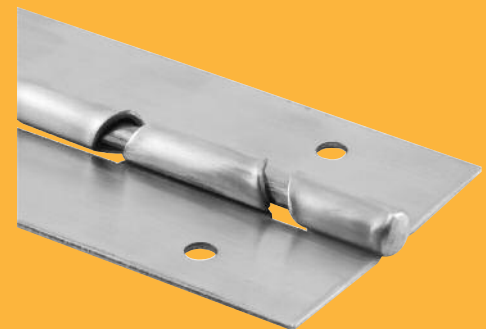


With spring

Cam-Closing Piano Hinges

14 gauge (1/4" pin)

Description	Part No.	Finish - Alloy	Width	Length
R.H. In/Out or L.H. In/Out	650-9402	Satin - Stamped Stainless Steel Zero Opening	3"	54-1/2"
	650-9403	Satin - Stamped Stainless Steel 20° Opening	3"	54-1/2"
	650-9400	Satin - Stamped Stainless Steel Zero Opening	3"	57-1/2"
	650-9401	Satin - Stamped Stainless Steel 20° Opening	3"	57-1/2"



Pivot Hinge

2 Hinge Set

Description	Part No.	Finish - Alloy
For 3/4" & 1" thick post / door	650-6040	Satin - Cast Stainless Steel

- **Roller bearing** design
- For **Phenolic and solid plastic** applications



Square Barrel Hinges

For 1" Material (Pre-packaged with fasteners)

Description	Part No.	Finish - Alloy	Height
R.H. In or L.H. Out	656-2019	Satin - Cast Stainless Steel	3"
L.H. In or R.H. Out	656-2022	Satin - Cast Stainless Steel	3"

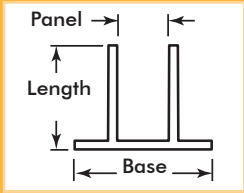


Round Barrel Hinges

For 1" Material

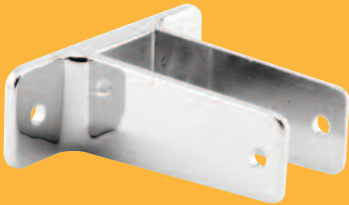


Description	Part No.	Finish - Alloy	Height
Two Hinge Sets			
R.H. In or L.H. Out	650-2843	Clear Anodized - Aluminum	8"
	650-2845	Brite Dip - Aluminum	8"
L.H. In or R.H. Out	650-2844	Clear Anodized - Aluminum	8"
	650-2846	Brite Dip - Aluminum	8"
Three Hinge Sets (1 top and 2 bottoms)			
R.H. In or L.H. Out	650-2847	Clear Anodized - Aluminum	8"
L.H. In or R.H. Out	650-2848	Clear Anodized - Aluminum	8"



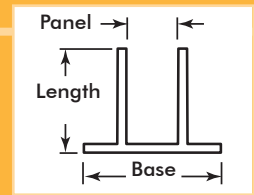
Cast Wall Brackets

Description	Panel Size	Bracket Length	Base Width	Part No.	Finish - Alloy
Two ear brackets	1/2"	2-1/2"	2-7/8"	650-9033	Chrome Plated - Zamak
	1/2"	2-1/2"	2-7/8"	650-9780	Satin - Stainless Steel
	3/4"	2-1/2"	3"	650-6350	Chrome Plated - Zamak
	3/4"	2-1/2"	3"	650-8963	Satin - Stainless Steel
	7/8"	2-1/2"	3-1/2"	650-6353	Chrome Plated - Zamak
	7/8"	2-1/2"	3-1/2"	650-8507	Satin - Stainless Steel
	1"	2-1/2"	4"	650-6356	Chrome Plated - Zamak
	1"	2-1/2"	4"	650-7464	Satin - Stainless Steel
	1-1/4"	2-1/2"	4"	650-6368	Chrome Plated - Zamak
	1-1/4"	2-1/2"	4"	650-8876	Satin - Stainless Steel
Two ear brackets X-Long	1"	3-1/2"	4"	650-6365	Chrome Plated - Zamak
	1-1/4"	3-1/2"	4"	650-6380	Chrome Plated - Zamak
One ear brackets	1/2"	2-1/2"	1-3/4"	650-9499	Chrome Plated - Zamak
	1/2"	2-1/2"	1-3/4"	650-9783	Satin - Stainless Steel
	3/4"	2-1/2"	2"	650-9282	Chrome Plated - Zamak
	3/4"	2-1/2"	2"	650-9387	Satin - Stainless Steel
	7/8"	2-1/2"	2-1/16"	650-8792	Chrome Plated - Zamak
	7/8"	2-1/2"	2-1/16"	650-9885	Satin - Stainless Steel
	1"	2-1/2"	2-5/8"	650-6383	Chrome Plated - Zamak
	1"	2-1/2"	2-5/8"	650-8873	Satin - Stainless Steel
	1-1/8"	2-1/2"	2-3/4"	650-6392	Chrome Plated - Zamak
	1-1/4"	2-1/2"	2-3/4"	650-6395	Chrome Plated - Zamak
	1-1/4"	2-1/2"	2-3/4"	650-8786	Satin - Stainless Steel

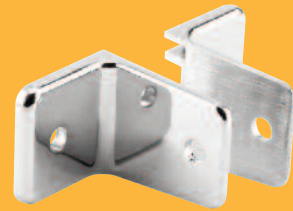


Cast Wall Brackets

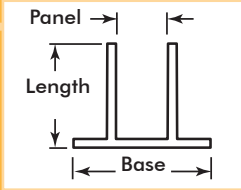
PRIME-LINE®



Description	Panel Size	Bracket Length	Base Width	Part No.	Finish - Alloy
One ear brackets X-Long	1"	3-1/2"	2-3/4"	650-6407	Chrome Plated - Zamak
	1-1/4"	3-1/2"	2-13/16"	650-6410	Chrome Plated - Zamak
Mini brackets	—	1-3/4"	—	650-8342	Chrome Plated - Zamak
	—	1-3/4"	—	650-9888	Satin - Stainless Steel
	1-1/4"	1-3/4"	4"	650-6377	Chrome Plated - Zamak
	1-1/4"	1-3/4"	4"	650-8738	Satin - Stainless Steel
	1-1/4"	1-5/8"	2-3/4"	650-6404	Chrome Plated - Zamak
	1-1/4"	1-5/8"	2-3/4"	650-9891	Satin - Stainless Steel
Two ear Urinal brackets	1/2"	2-1/2"	2-7/8"	650-9882	Chrome Plated - Zamak
	1/2"	2-1/2"	2-7/8"	650-9894	Satin - Stainless Steel
	3/4"	2-1/2"	3"	650-8372	Chrome Plated - Zamak
	3/4"	2-1/2"	3"	650-9897	Satin - Stainless Steel
	7/8"	2-1/2"	3-1/2"	650-8300	Chrome Plated - Zamak
	7/8"	2-1/2"	3-1/2"	650-9900	Satin - Stainless Steel
	1"	2-1/2"	4"	650-4021	Chrome Plated - Zamak
	1"	2-1/2"	4"	650-4022	Satin - Stainless Steel
	1"	3-1/2"	4"	650-6446	Chrome Plated - Zamak
	1"	3-1/2"	4"	650-9168	Satin - Stainless Steel
	1-1/4"	3-1/2"	4"	650-6449	Chrome Plated - Zamak



Cast Wall Brackets



Description	Panel Size	Bracket Length	Base Width	Part No.	Finish - Alloy
Wing Urinal Brackets	1"	12"	7"	650-6440	Chrome Plated - Zamak
	1-1/4"	6"	6-1/4"	650-6443	Chrome Plated - Zamak



"U" Brackets	1/2"	1-3/8"	3/4"	650-9687	Chrome Plated - Zamak
	1/2"	1-3/8"	3/4"	650-9903	Satin - Stainless Steel
	3/4"	1-3/8"	1"	650-6413	Chrome Plated - Zamak
	3/4"	1-3/8"	1"	650-9384	Satin - Stainless Steel
	7/8"	1-3/8"	1-5/32"	650-6416	Chrome Plated - Zamak
	7/8"	1-3/8"	1-5/32"	650-9906	Satin - Stainless Steel
	1"	1-3/8"	1-1/4"	650-6419	Chrome Plated - Zamak
	1"	1-3/8"	1-1/4"	650-9435	Satin - Stainless Steel
	1-1/4"	1-3/8"	1-1/2"	650-6422	Chrome Plated - Zamak



"U" Brackets X-Long	1"	2-1/2"	1-9/32"	650-6431	Chrome Plated - Zamak
	1-1/4"	2-1/2"	1-9/16"	650-6428	Chrome Plated - Zamak



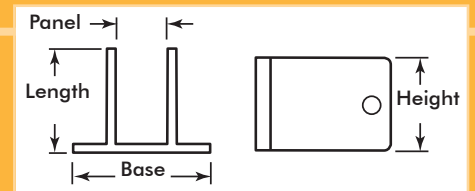
2-Piece Brackets	Any	2-1/2"	1-1/2"	650-6437	Chrome Plated - Zamak
	Any	2-1/2"	1-1/2"	650-8774	Satin - Stainless Steel
	Any	3-1/2"	1-1/2"	650-6434	Chrome Plated - Zamak
	Any	3-1/2"	1-1/2"	650-8091	Satin - Stainless Steel



2-Piece Bracket	Any	2-1/2"	1-1/2"	650-6436	Chrome Plated - Zamak
------------------------	------------	--------	--------	-----------------	------------------------------

Stamped Stainless Steel Wall Brackets*

PRIME-LINE®

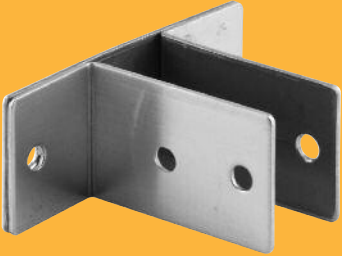
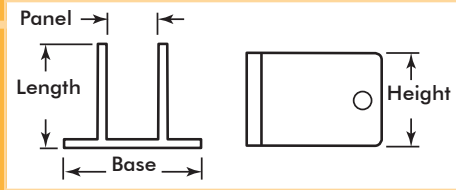


Description	Panel Size	Bracket Length	Base Width	Height	
				1-1/2"	3"
Two ear brackets	1/2"	2-1/2"	3-3/16"	650-8133	650-8163
	3/4"	2-1/2"	3-3/8"	650-8136	650-8166
	7/8"	2-1/2"	3-9/16"	650-8139	650-8169
	1"	2-1/2"	3-11/16"	650-8142	650-8172
	1-1/4"	2-1/2"	3-15/16"	650-8145	650-8175
Urinal Screen X-High brackets	1"	3-1/2"	3-11/16"	650-1887	—
One ear brackets	1/2"	2-1/2"	2-7/8"	650-8148	650-8178
	3/4"	2-1/2"	2-1/8"	650-8151	650-8181
	7/8"	2-1/2"	2-5/16"	650-8154	650-8184
	1"	2-1/2"	2-1/8"	650-4061	—
	1"	2-1/2"	2-3/8"	650-8157	650-8187
	1-1/4"	2-1/2"	2-11/16"	650-8160	650-8190
"U" brackets	1/2"	1-1/2"	5/8"	650-8193	650-9090
	3/4"	1-1/2"	15/16"	650-8196	—
	7/8"	1-1/2"	1"	650-8199	—
	1"	1-1/2"	1-3/16"	650-8202	650-1935
	1-1/8"	1-1/2"	1-1/4"	650-1899	—
	1-1/4"	1-1/2"	1-3/8"	650-8205	—

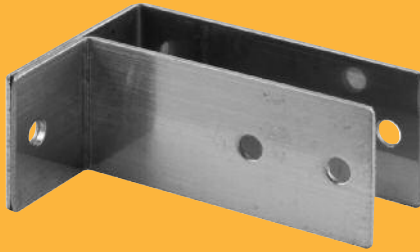


* Special Order Other Styles and Sizes Not Shown

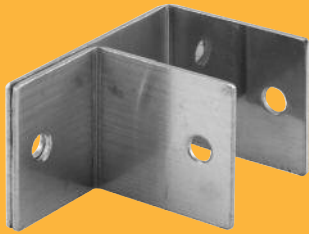
Stamped Stainless Steel Wall Brackets*



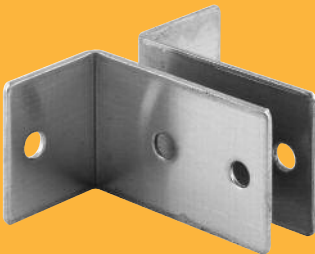
Description	Panel Size	Bracket Length	Base Width	Height 1-1/2"
Two ear brackets	1/2"	2-1/2"	3-3/16"	650-8134
	3/4"	2-1/2"	3-13/32"	650-8135
	1-1/4"	3-1/2"	3-15/16"	650-8182



One ear bracket	1"	3-1/2"	2-13/32"	650-8179
------------------------	-----------	--------	----------	-----------------



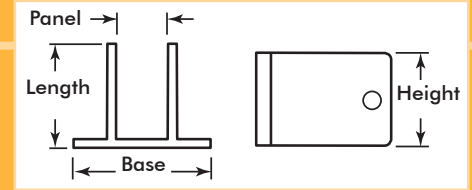
One ear Mini bracket	1-1/4"	1-3/4"	2-11/16"	650-8180
-----------------------------	---------------	--------	----------	-----------------



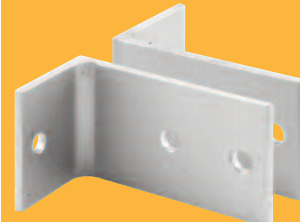
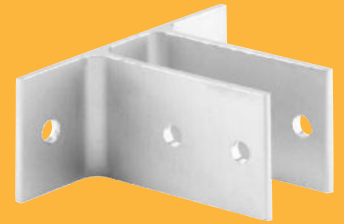
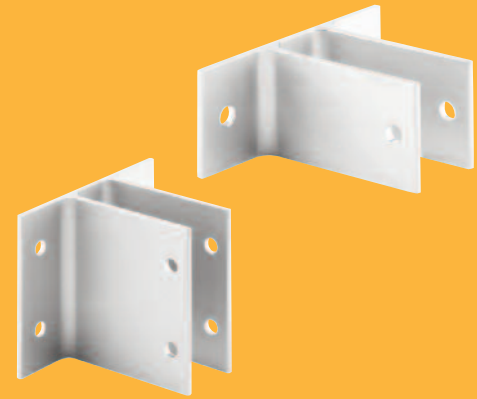
2-Piece bracket	1-1/4"	1-3/4"	2-11/16"	650-1920
------------------------	---------------	--------	----------	-----------------

Extruded Aluminum - Clear Anodized Wall Brackets

PRIME-LINE®

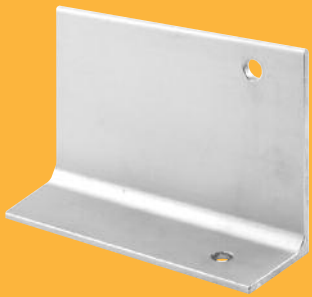
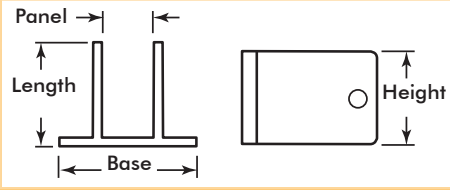


Description	Panel Size	Bracket Length	Base Width	Height	
				1-1/2"	3"
Two ear brackets	1/2"	2-3/4"	2-7/8"	650-1836	650-1947
	1"	2-3/4"	3-3/4"	650-1839	650-9597
Two ear bracket	1/2"	2-3/4"	2-7/8"	650-1844	—
One ear brackets	3/4"	2-3/4"	2-3/16"	650-2852	—
	1"	2-3/4"	2-5/8"	650-1848	650-1950
	1-1/4"	2-3/4"	2-5/8"	650-1851	650-1953
"U" brackets	1/2"	1-3/8"	3/4"	650-1902	650-1965
	1"	1-3/8"	1-1/4"	650-1905	650-1956
Angle brackets	Any	2-3/4"	1-3/8"	650-2854	—



Extruded Aluminum Wall Brackets

Continuous Length

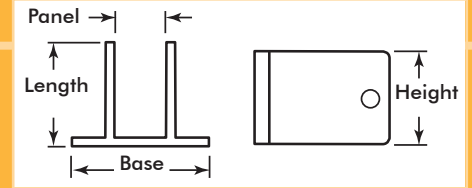


Description	Panel Size	Bracket Length	Base Width	Finish	
				Clear Anodized	Brite Dip
Two ear brackets	1/2"	41"	2-7/8"	650-1974-41	—
	1/2"	57-1/2"	2-7/8"	650-1974	—
	3/4"	57-1/2"	3-7/16"	650-4029	—
	1"	41"	3-3/4"	650-8531-41	—
	1"	54"	3-3/4"	650-8531-54	—
	1"	57-1/2"	3-3/4"	650-8531	—
	1/2"	57-1/2"	2-7/8"	650-1974-57	—
For Special 7 Hole Installations					
One ear brackets	1/2"	57-1/2"	1-15/16"	650-4030	—
	1/2"	57-1/2"	1-15/16"	650-4030-57	—
	3/4"	57-1/2"	2-3/16"	650-4031-57	—
	3/4"	57-1/2"	2-3/16"	650-4031	—
	1"	54"	2-5/8"	650-9750-54	—
	1"	57-1/2"	2-5/8"	650-9750	—
	1-1/4"	57-1/2"	2-5/8"	650-9186	—
"U" brackets	1/2"	57-1/2"	3/4"	650-1971	—
	1/2"	57-1/2"	3/4"	650-1971-57	—
	3/4"	57-1/2"	1"	650-4032	—
	1"	54"	1-1/4"	650-1968-54	650-1846
	1"	57-1/2"	1-1/4"	650-1968	—
"L" brackets	Any	57-1/2"	—	650-4033	650-1849
"H" brackets	1"	54"	—	650-1862	650-1850

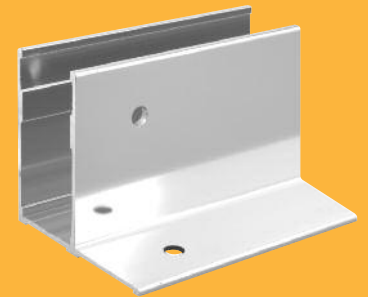
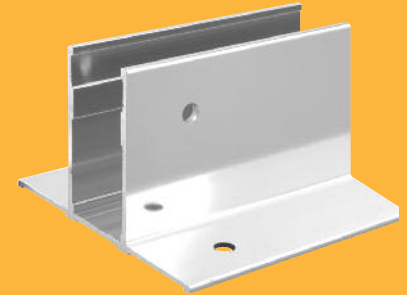
Fluted Extruded Aluminum Wall Brackets

Continuous Length

PRIME-LINE®



Description	Panel Size	Bracket Length	Finish	
			Clear Anodized	Brite Dip
Two ear brackets				
	1"	54"	650-1854-54	650-1852
	1"	57-1/2"	650-1854	—
	1-1/4"	57-1/2"	650-1855	—
One ear brackets				
	1"	41"	650-1856-41	—
	1"	54"	650-1856-54	650-1853
	1"	57-1/2"	650-1856	—



Pilaster Shoes

Stainless Steel

Square Edge - Closed End*

Part No.	Post Thickness	Height
650-2835	1"	3"
650-2836	1-1/8"	3"
650-2837	1-1/4"	3"

* Lengths available from 2" to 30"

Round Edge - Closed End*

Part No.	Post Thickness	Height
650-2841	1-1/4"	3"

* Lengths available from 2" to 24"

Square Edge - Open End*

Part No.	Post Thickness	Height
650-2838	1"	3"
650-2839	1-1/8"	3"
650-2840	1-1/4"	3"

* Lengths available from 2" to 30"



Pilaster Shoes

4" High



Description	Length	Part Number	
		1" Post Size	1-1/4" Post Size
22 ga.	3"	650-3004-3	650-3001-3
	4"	650-3004-4	650-3001-4
	5"	650-3004-5	650-3001-5
	6"	650-3004-6	650-3001-6
	7"	650-3004-7	650-3001-7
	8"	650-3004-8	650-3001-8
	9"	650-3004-9	650-3001-9
	10"	650-3004-10	650-3001-10
	12"	650-3004-12	650-3001-12
	14"	650-3004-14	650-3001-14
	16"	650-3004-16	650-3001-16
	18"	650-3004-18	650-3001-18
	20"	650-3004-20	650-3001-20
	22"	650-3004-22	—
24"	650-3004-24	650-3001-24	



Open End 22 ga.	3"	650-2900-3	650-2881-3
	4"	650-2900-4	650-2881-4
	5"	650-2900-5	650-2881-5
	6"	650-2900-6	650-2881-6
	7"	650-2900-7	650-2881-7
	8"	650-2900-8	650-2881-8
	9"	650-2900-9	650-2881-9
	10"	650-2900-10	650-2881-10
	12"	650-2900-12	650-2881-12
	14"	650-2900-14	650-2881-14
	16"	650-2900-16	650-2881-16
	18"	650-2900-18	650-2881-18
	20"	650-2900-20	650-2881-20
	22"	650-2900-22	—
24"	650-2900-24	650-2881-24	



Description	Length	Part Number	
		3/4" Post Size	1" Post Size
Offset 22 ga.	3"	650-3005-3	650-3006-3
	4"	650-3005-4	650-3006-4
	5"	650-3005-5	650-3006-5
	6"	650-3005-6	650-3006-6
	8"	650-3005-8	650-3006-8
	10"	650-3005-10	650-3006-10
	12"	650-3005-12	650-3006-12
	14"	650-3005-14	—
	16"	650-3005-16	—
	18"	650-3005-18	650-3006-18
	20"	650-3005-20	650-3006-20
	24"	650-3005-24	650-3006-24

Pilaster Shoes

4" High

PRIME-LINE®

Description	Length	Part Number 1" Post Size
Anchor 18 ga.	3"	650-3007-3
	4"	650-3007-4
	5"	650-3007-5
	6"	650-3007-6
	7"	650-3007-7
	8"	650-3007-8
	10"	650-3007-10
	12"	650-3007-12
	14"	650-3007-14
	18"	650-3007-18
	24"	650-3007-24



Pilaster / Partition Supports

Pre-packaged with fasteners

One Ear

Part No.

656-2004

Description

Stainless steel floor mounted support for 1/2" to 1-1/4" panels. Floor clearance* - 12" to 14".

Two Ear

Part No.

656-9024

Description

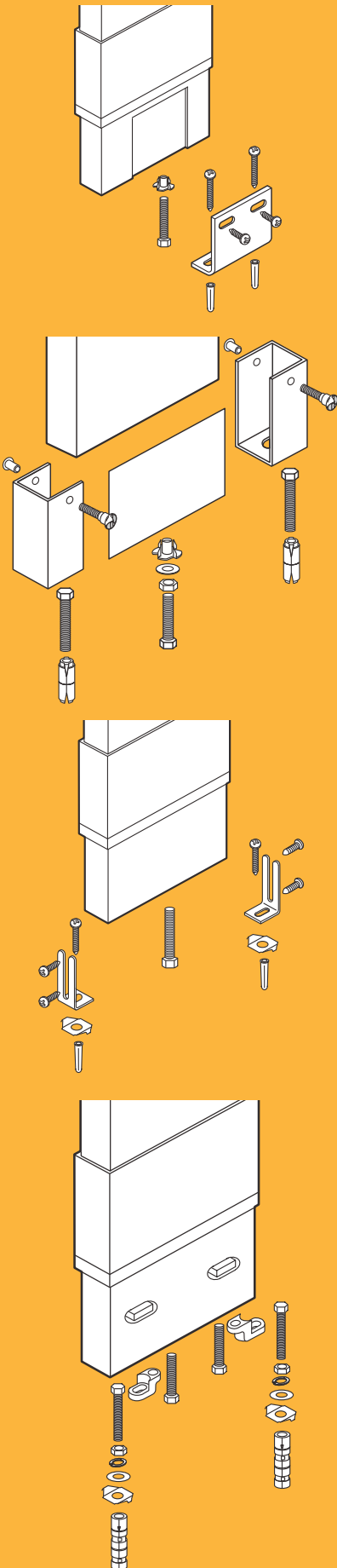
Stainless steel floor mounted support for 1-1/4" panels. Floor clearance* - 12" to 14".

* Lesser floor clearance available on special order.



Pilaster (Post) Anchoring Devices

Packaged with fasteners as shown



Post Size	Part No.	Description
Any Thickness	656-9219	Use multiple sets for post lengths over 5"
1-1/4" Thick	656-6686	Spacer plate is 3" x 10"
1-1/8" & 1-1/4" Thick	656-1776	
1-1/8" & 1-1/4" Thick	656-1797	

Pilaster (Post) Anchoring Devices

Packaged with fasteners as shown

PRIME-LINE®

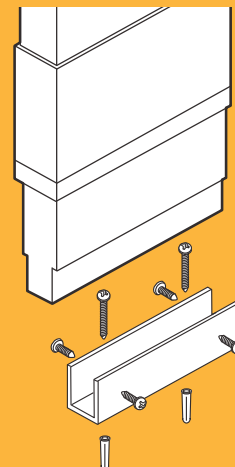
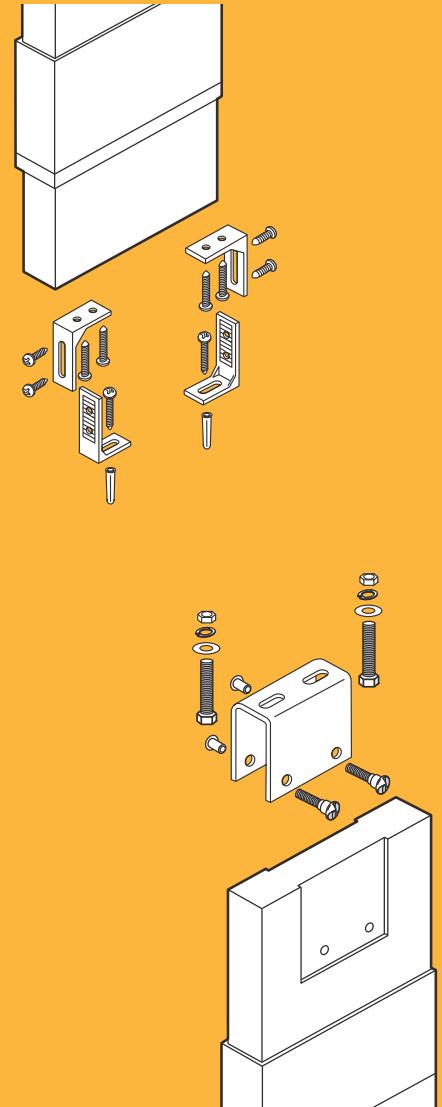
Post Size **Part No.**

3/4" Thick & Larger **656-9408**

1/2" Thick **656-1788**
3/4" **656-9312**
7/8" **656-1785**
1" **656-9618**
1-1/8" **656-1782**
1-1/4" **656-9615**

Post Size **Post Length** **Part No.**

1-1/4" 2" to 4" **656-1770**
1-1/4" 4" to 7" **656-9996**
1-1/4" 8" and up **656-1773**



Pilaster (Post) Accessory Parts



Part No.

Description

650-9297

1-1/4" Square post shoe - Chrome plated Zamak



650-6671

1-3/4" Square post shoe - Chrome plated Zamak



650-7019

Cap for 1-3/4" pilaster post



650-2448

Pilaster anchoring fork



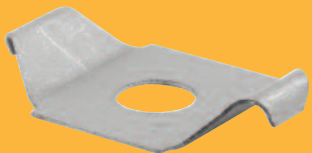
650-2433

Floor "L" anchor for plastic laminate



650-2436

Post "L" anchor for plastic laminate

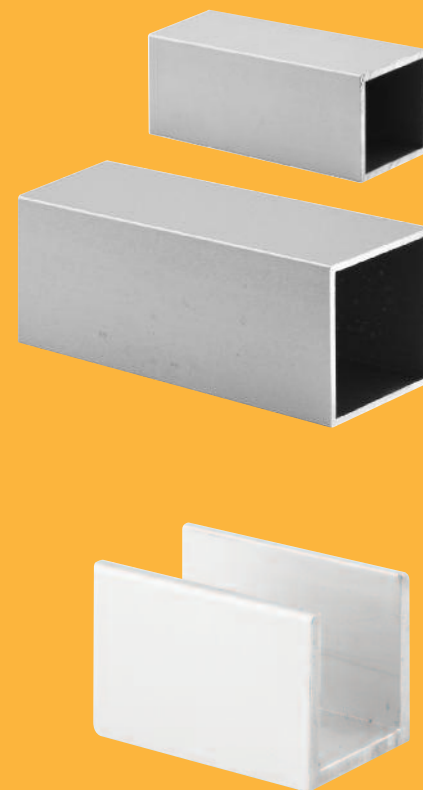


650-2451

Spring clip

Pilaster (Post) Accessory Parts

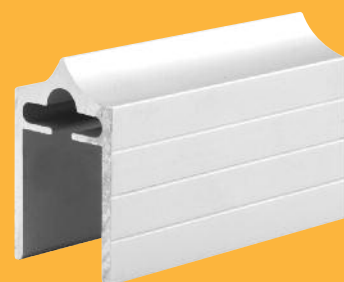
Description	Post Size	Length	Part Number	
			Clear Anodized	Brite Dip
1-1/4" Square Post For use with post shoe 650-9297	—	10'	650-1860-10	—
1-3/4" Square Post For use with post shoe 650-6671	—	10'	650-1861-10	—
Aluminum "U" Channel	1-1/4"	2"	650-2445	—
Aluminum "U" Channel	1-1/4"	4"	650-2439	—
Aluminum "U" Channel	1-1/4"	8"	650-2442	—



Headrails

Extruded Aluminum (Clear Anodized & Brite Dip)

Description	Panel Size	Length	Part Number	
			Clear Anodized	Brite Dip
62" w/curtain track	1"	62"	650-2882-62	—
7' w/curtain track	1"	84"	650-2882-84	—
8-1/2' w/curtain track	1"	102"	650-2882-102	650-2886-102
10' w/curtain track	1"	120"	650-2882-120	650-2886-120
13.08' w/curtain track	3/4"	157"	650-2883-157	—
	1"	157"	650-2882-157	650-2886-157
	1-1/4"	157"	650-2884-157	—
8-1/2' w/bottom channel	3/4"	102"	650-2860-102	—
	1"	102"	650-2861-102	—
	1-1/4"	102"	650-2862-102	—
10' w/bottom channel	3/4"	120"	650-2860-120	—
	1"	120"	650-2861-120	—
	1-1/4"	120"	650-2862-120	—



Headrail End Plugs



Description	Finish - Alloy	Part No.
1" x (1-1/4") Rectangular Tube	Chrome Plated - Zamak	650-6659
1" x (1-1/4") Rectangular Tube	Chrome Finish - Nylon	650-2505
1-1/4" x (1-7/8") Rectangular Tube	Chrome Plated - Zamak	650-2502
3/4" x 7/8" Rectangular-Ampco	Chrome Plated - Zamak	650-6690
1" x 7/8" Rectangular-Ampco	Chrome Plated - Zamak	650-6689
1-1/4" x 7/8" Rectangular-Ampco	Chrome Plated - Zamak	650-6664
For "Anti-Grip" Headrail	Chrome Plated - Zamak	650-6662
For "Anti-Grip" Headrail	Aluminum Painted - Zamak	650-6663
For "Anti-Grip" Headrail	Gray - Nylon	650-8366
For "Anti-Grip" Style w/track - 3/4"	Gray - Nylon	650-6668
For "Anti-Grip" Style w/track - 1"	Gray - Nylon	650-6669
For "Anti-Grip" Style w/track - 1-1/4"	Gray - Nylon	650-6670

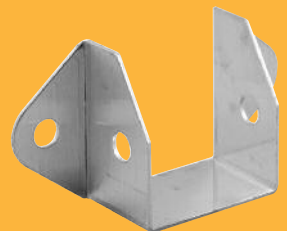
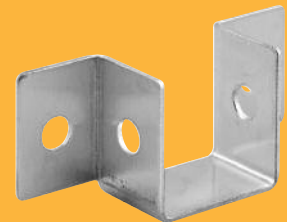
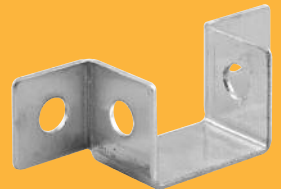
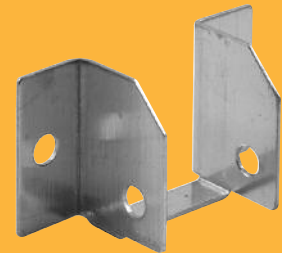
Curtain Hook



Description	Finish - Alloy	Part No.
For headrail w/curtain track	Aluminum hook with nylon guide	650-6647

Headrail Brackets

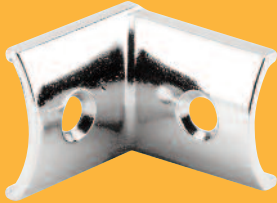
Description	Finish - Alloy	Part No.
For 1" Headrail For 1-1/4" Headrail	Chrome Plated - Zamak Chrome Plated - Zamak	650-6473 650-8513
For 1" Headrail	Chrome Plated - Zamak	650-6477
For 3/4" Headrail w/track For 1" Headrail w/track For 1-1/4" Headrail w/track	Stamped Stainless Steel Stamped Stainless Steel Stamped Stainless Steel	650-6672 650-6673 650-6674
For 1" Headrail (Mini)	Stamped Stainless Steel	650-6675
For 1" Headrail	Stamped Stainless Steel	650-6676
For 1-1/4" Headrail	Stamped Stainless Steel	650-8514



Alcove Clips



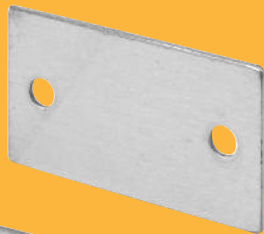
Part No.	Finish - Alloy	Description
650-6656	Chrome Plated - Zamak	Joins laminate panel to pilaster 1/4" offset (1/8" per side).
650-4028	Satin - Cast Stainless Steel	
650-4035	Satin - Stamped Stainless Steel	



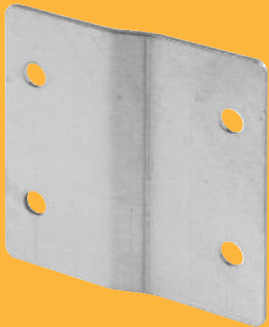
650-6650	Chrome Plated - Zamak	Right angle curved molding (Metpar)*
----------	------------------------------	--



650-6653	Chrome Plated - Zamak	Right angle curved molding (Flush Metal)*
----------	------------------------------	---



650-4036**	Satin - Stamped Stainless Steel	1-1/2" high x 2-5/8" long equal panel and post
------------	--	---



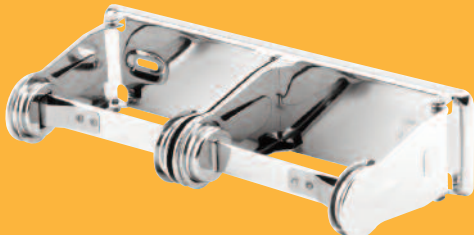
650-4037**	Satin - Stamped Stainless Steel	3" high x 1/4" offset (1/8" per side)
------------	--	---------------------------------------

* For 1" to 1-1/4" post size

Paper Roll Holders



Part No.	Finish - Alloy	Description
656-6710	Chrome Plated - Steel	Single roll (standard or 1800 sheet) dispenser



656-6713	Chrome Plated - Steel	Double roll (standard or 1800 sheet) dispenser
----------	------------------------------	--

Fasteners

Security (Six Lobe - With Center Pin)

PRIME-LINE®

Description	Part No.	Size
T-27 Pan head screws - Chrome Plated Steel	645-0119	#10 x 5/8"
	645-0128	#10 x 3/4"
	645-0122	#14 x 1/2"
	645-0129	#14 x 5/8"
	645-0131	#14 x 1-3/4"
	645-0132	#14 x 2"
	645-0134	#14 x 2-1/2"
T-27 Pan head screws - Stainless Steel	642-0119	#10 x 5/8"
	642-0128	#10 x 3/4"
	642-0122	#14 x 1/2"
	642-0129	#14 x 5/8"
	642-0130	#14 x 3/4"
	642-0125	#14 x 1-1/2"
	642-0132	#14 x 2"
T-27 Truss head screws - Chrome Plated Steel	645-0135	#12 x 1-1/2"
	645-0136	#12 x 2"
	645-0137	#12 x 2-1/2"
	645-0138	#14 x 5/8"
	645-0139	#14 x 1"
T-27 Truss head screws - Stainless Steel	642-0135	#12 x 1-1/2"
	642-0136	#12 x 2"
	642-0137	#12 x 2-1/2"
	642-0138	#14 x 5/8"
	642-0139	#14 x 1"
T-27 Shoulder screws - Chrome Plated Steel	645-0107	#10-24 x 3/8"
	645-0110	#10-24 x 1/2"
	645-0113	#10-24 x 3/4"
	645-0116	#10-24 x 15/16"
	645-0141	#10-24 x 1-1/16"
	645-0142	#10-24 x 1-3/16"
	645-0143	#10-24 x 1-5/16"
	645-0144	#10-24 x 1-3/8"
T-27 Shoulder screws - Stainless Steel	642-0107	#10-24 x 3/8"
	642-0110	#10-24 x 1/2"
	642-0113	#10-24 x 3/4"
	642-0116	#10-24 x 15/16"
	642-0141	#10-24 x 1-1/16"
	642-0142	#10-24 x 1-3/16"
	642-0143	#10-24 x 1-5/16"
T-27 Barrel Nuts - Chrome Plated Steel	645-0101	#10-24 x 1/2"
	645-0104	#10-24 x 5/8"
T-27 Barrel Nuts - Stainless Steel	642-0101	#10-24 x 1/2"
	642-0104	#10-24 x 5/8"



Fasteners

Security (Six Lobe - With Center Pin)



Description	Part No.	Size
T-20 Oval head machine screws Chrome Plated Steel	645-0145	#8-32 x 5/8"
	645-0146	#8-32 x 3/4"
	645-0147	#8-32 x 1"
	645-0148	#8-32 x 1-1/8"
	645-0149	#8-32 x 1-3/8"
	645-0150	#8-32 x 1-5/8"
T-20 Oval head machine screws Stainless Steel	642-0145	#8-32 x 5/8"
	642-0146	#8-32 x 3/4"
	642-0147	#8-32 x 1"
	642-0148	#8-32 x 1-1/8"
	642-0149	#8-32 x 1-3/8"
	642-0150	#8-32 x 1-5/8"
T-20 Flat head screws - Chrome Plated Steel	645-0140	#10 x 1"
T-20 Flat head screws - Stainless Steel	642-0140	#10 x 1"



Fasteners

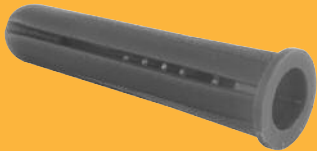
"Phillips"



Description	Part No.	Size
Pan head sheet metal screws Chrome Plated Steel	651-0488	#12 x 1-1/2"
	651-0361	#14 x 5/8"
	651-0490	#14 x 1-1/2"
	651-0491	#14 x 1-3/4"
Pan head sheet metal screws Stainless Steel	642-0418	#14 x 5/8"
	642-0636	#14 x 1-3/4"

Anchors

"Plastic"



Description	Part No.	Size
Blue plastic anchors	651-0475	#14-16 x 1-3/8"

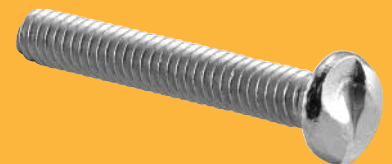
Fasteners

"Unslotted"



Description	Part No.	Size
Barrel nuts - Chrome Plated Steel	651-0469	#8-32 x 1/2"
	651-0668	#10-24 x 1/2"
Barrel nuts - Stainless Steel	642-0469	#8-32 x 1/2"
	642-0668	#10-24 x 1/2"

Description	Part No.	Size
Barrel nuts - Chrome Plated Steel	651-0648	#10-24 x 1/2"
	651-0454	#10-24 x 5/8"
Barrel nuts - Stainless Steel	642-0648	#10-24 x 1/2"
	642-0454	#10-24 x 5/8"
Shoulder screws - Chrome Plated Steel	651-0651	#10-24 x 1/2"
	651-0508	#10-24 x 3/4"
	651-0463	#10-24 x 15/16"
	651-0654	#10-24 x 1-1/16"
	651-0656	#10-24 x 1-3/16"
	651-0457	#10-24 x 1-5/16"
	651-0466	#10-24 x 1-1/2"
	Shoulder screws - Stainless Steel	642-0651
642-0508		#10-24 x 3/4"
642-0463		#10-24 x 15/16"
642-0654		#10-24 x 1-1/16"
642-0656		#10-24 x 1-3/16"
642-0457		#10-24 x 1-5/16"
642-0466		#10-24 x 1-1/2"
Oval head machine screws Chrome Plated Steel		651-0657
	651-0660	#8-32 x 3/4"
	651-0481	#8-32 x 1"
	651-0472	#8-32 x 1-1/8"
	651-0663	#8-32 x 1-3/8"
	651-0666	#8-32 x 1-5/8"
Oval head machine screws Stainless Steel	642-0472	#8-32 x 1-1/8"
Sheet metal screws - Chrome Plated Steel	651-0612	#8 x 3/8"
	651-0615	#8 x 1/2"
	651-0621	#10 x 3/8"
	651-0618	#10 x 1/2"
	651-0358	#10 x 5/8"
	651-0624	#10 x 3/4"
	651-0627	#10 x 1"
	651-0415	#12 x 5/8"
	651-0630	#12 x 1-1/2"
	651-0409	#14 x 1/2"
	651-0418	#14 x 5/8"
	651-0633	#14 x 1"
	651-0636	#14 x 1-3/4"
	651-0639	#14 x 2"
	651-0642	#14 x 2-1/2"
651-0645	#14 x 3"	



Fastener Removers & Drivers



Description

Part No.

"One-Way" screw remover (For screw sizes 6-8)	650-7606
"One-Way" screw remover (For screw sizes 8-10)	650-6896
"One-Way" screw remover (For screw sizes 12-14)	650-6899
Three pack: Includes one of each size	650-8023
"One-Way" screw remover (For screw sizes 6-8)	650-7901
"One-Way" screw remover (For screw sizes 8-10)	650-7902
"One-Way" screw remover (For screw sizes 12-14)	650-7903
Three pack: Includes one of each size	650-7904
Driver - Use with all hex bits (magnetic end)	650-4005



Security Hex Bits

Description

Part No.

T-20 TORX®	650-4012
T-25 TORX®	650-4013
T-27 TORX®	650-4014
T-30 TORX®	650-4015

PARTITION MANUFACTURERS' REPLACEMENT HARDWARE

	Page
Accurate.....	55
All American	56
American Sanitary	57
Ampco	58
Bobrick	59-60
Capital	61
Comtec / Santana	62
Fiat	63
Flushmetal	64
General / Rockville	65
Global.....	66
Hadrian	67
Knickerbocker	68
Metpar	69
Mills.....	70
Sanymetal	71
Weis Robart.....	72

Metal Partitions

Parts For: Accurate



Latch
650-9087



Latch Assembly
650-7016



Surface Latch
650-6602



Metal Hinge Pin
650-7552



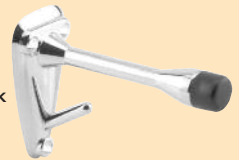
Top Hinge
650-7549



Strike & Keeper
650-7277



Bottom Hinge
650-7124



Bumper Hook
650-6632



Pull
650-6641



Top Cam
650-7555



Door Cap
650-7561



Pintle
650-7558

Laminate Partitions



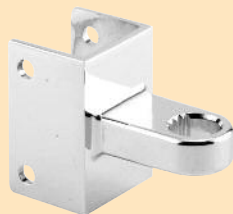
Surface Latch
650-2804



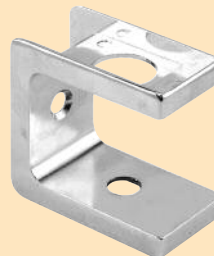
Surface Latch
650-2805



Door Stop
650-2806



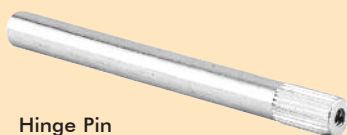
Top & Bottom
Hinge Bracket
650-7543



Top & Bottom
Door Trim
650-7540



Bumper Hook
650-6626



Hinge Pin
650-7337



Pull
650-2809

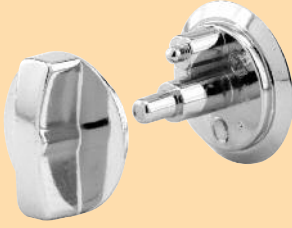


Cam & Pintle Set
650-7534

Parts For: All American

Metal Partitions

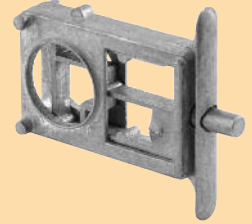
Latch
650-6908



Latch
650-8759



Latch Housing
650-6617



Strike & Keeper
650-6530



Top Hinge
650-7040



Bottom Hinge
650-7283



Pintle
650-7145



Cam
650-7449



Hinge Pin
650-7046



Laminate Partitions

Latch
650-6602



Strike & Keeper
650-6482



Top Hinge
650-9660



Bottom Hinge
650-9663



Pintle
650-7145



Cam
650-7449



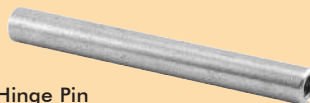
Cam Housing
650-9672



Top Door Trim
650-9669



Hinge Pin
650-9666



Bumper Hook
650-6626



**Parts For:
American Sanitary**

Latch
650-6596



Strike & Keeper
650-6482



Strike
650-6488



Top Hinge
650-6551



Bottom Hinge
650-6557



Pintle
650-6986



Cam
650-6923



Cam Housing
650-6593



Hinge Pin
650-7226



Top Door Trim
650-6587



Parts For: Ampco

Latch
650-6596



Keeper
650-6536



Strike
650-6542



Top Hinge
650-6545



Bottom Hinge
650-6548



Bumper Hook
650-6626



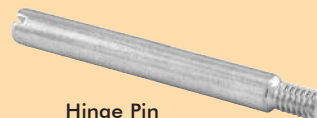
Cam
650-7232



Cam Housing
650-7235



Hinge Pin
650-6875



Top Door Insert
650-8780



Parts For: Bobrick #1040

R.H. In / L.H. Out
656-8237 (Shown)



L.H. In / R.H. Out
656-8240

Keeper
650-9252



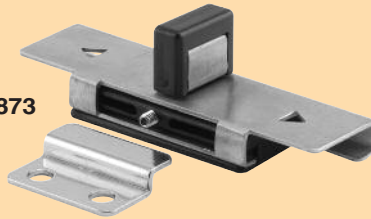
Keeper / Bumper
650-4008



Handle
650-2865



Latch
656-9873



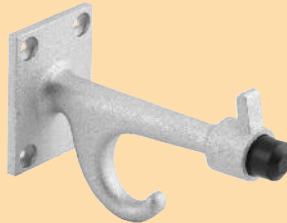
Strike
650-4011



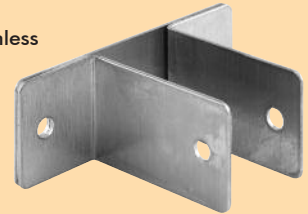
Hook
650-4010



Bumper Hook
656-1999



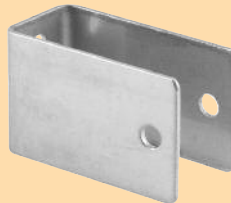
Stamped Stainless Steel Bracket
650-8142



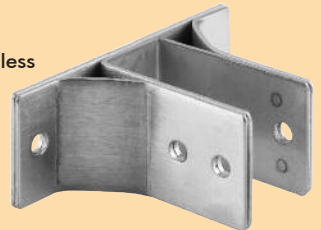
Stamped Stainless Steel Bracket
650-8157



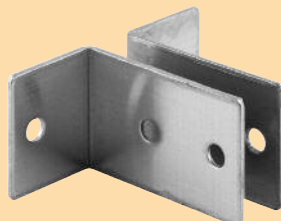
Stamped Stainless Steel Bracket
650-8217



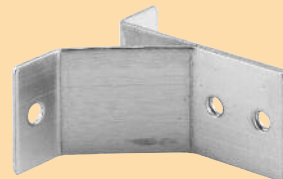
Stamped Stainless Steel Bracket
650-1833



Stamped Stainless Steel Bracket
650-1920



Stamped Stainless Steel Bracket
650-1845



Parts For: Bobrick #1540

Latch
650-6596



Latch
650-7431



Pull
650-6644



Wall Bumper
650-6638



Bumper Hook
650-6626



Strike & Keeper
650-6506



Strike
650-9375



Strike & Keeper
650-9246



Strike & Keeper
650-2871



Strike & Keeper



650-6542

650-6536

Top Hinge
650-8840



Bottom Hinge
650-8843

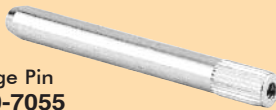


Top Door Trim
650-6587



Cam Housing
650-6593

Hinge Pin
650-7055



Cam
650-6923



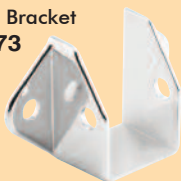
Pintle
650-6986



End Plug
650-6662



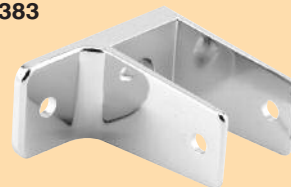
Headrail Bracket
650-6473



Two-Ear Bracket
650-6356



One-Ear Bracket
650-6383



"U" Bracket
650-6419



Parts For: Capital

Surface Latch
650-6596

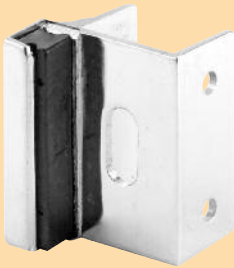


Concealed Latch
650-7528

Bumper Hook
650-6626



Strike & Keeper
650-6500



Strike & Keeper
650-6482



Strike & Keeper
650-6506



Top & Bottom
Hinge
650-7543



Hinge Pin
650-7055



Cam & Pintle
650-7534



Top & Bottom Door Trim
650-7540



**Parts For:
Comtec / Santana**



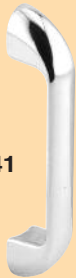
Strike & Keeper
650-2873 Clear Anodized - **Aluminum**
650-4046 Brite Dip - **Aluminum**



Strike
650-2875 Clear Anodized - **Aluminum**
650-4047 Brite Dip - **Aluminum**



Latch
650-8543

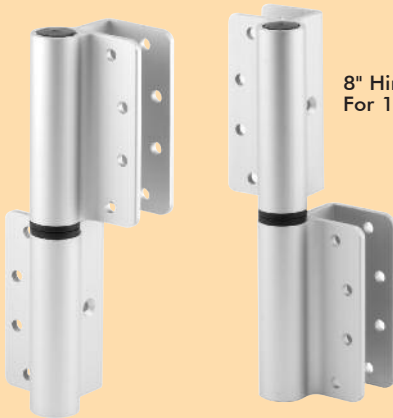


Handle
650-6641

Coat Hook & Bumper
650-6626



Door Bumper
650-6638



8" Hinge Set
For 1" Material

R.H. In / L.H. Out
650-2843 (Shown)

L.H. In / R.H. Out
650-2844

Top Hinge
Repair Kit
650-2872



Bottom Hinge
Repair Kit
650-2874



54" Extruded Aluminum
Continuous Brackets
for 1" Material

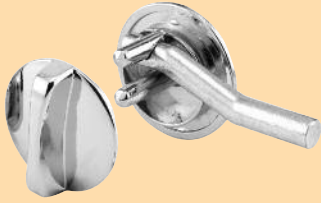


Single Ear
650-9750



Double Ear
650-8531

Parts For: Fiat



Concealed Latch
650-6614



Concealed Latch
650-9000



Latch
650-6602



Latch
650-6596



Strike & Keeper
650-6482



Strike
650-6488



Strike & Keeper
650-7633



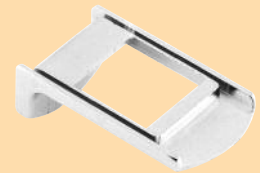
Top Hinge
650-8399



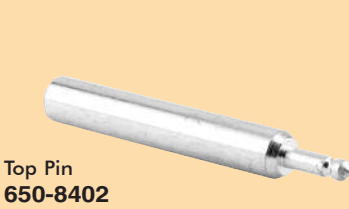
Bottom Hinge
650-8396



Top Door Insert
650-2463



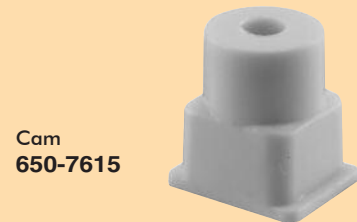
Bottom Door Insert
650-2484



Top Pin
650-8402



Pintle
650-6986



Cam
650-7615



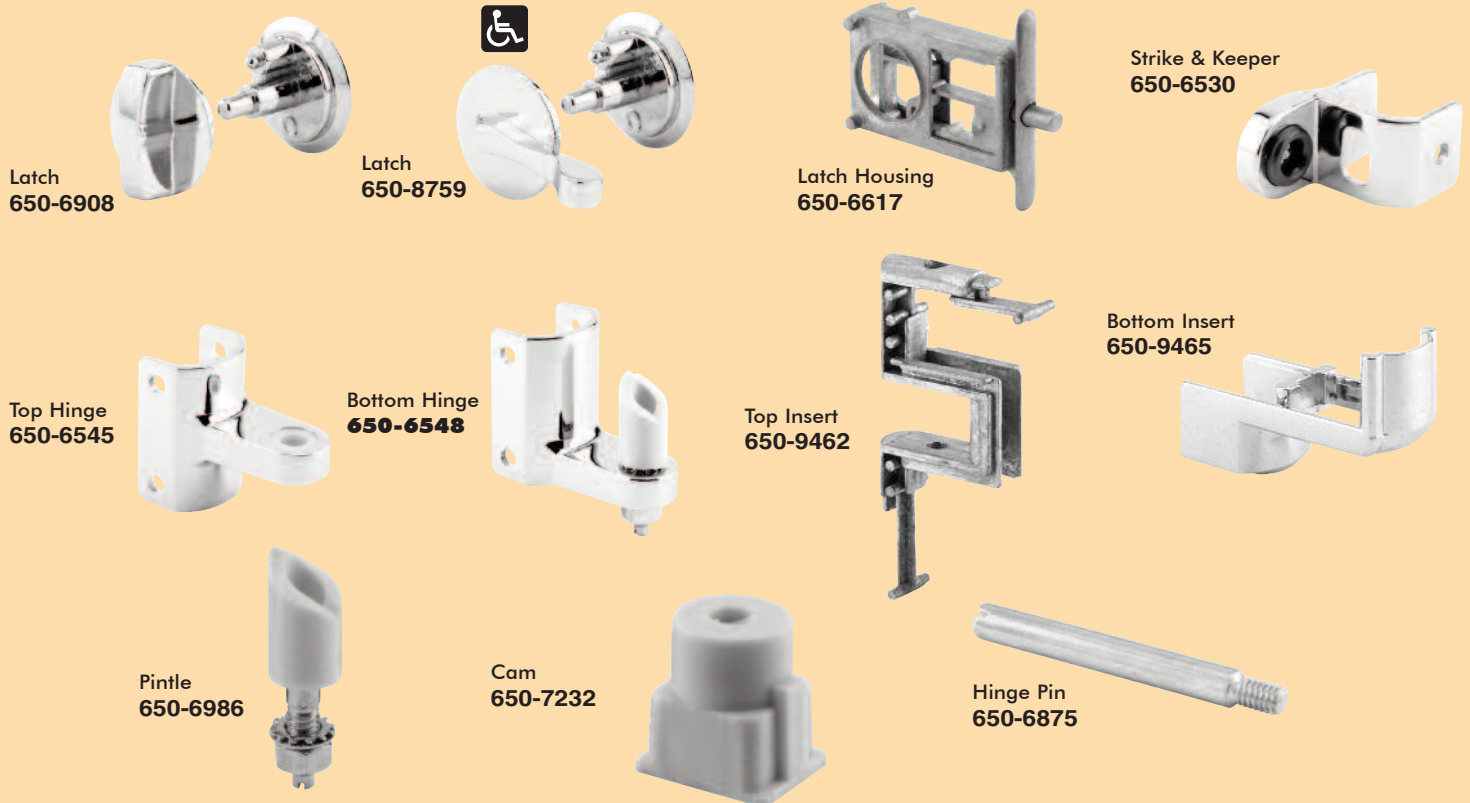
Pull
650-6644



Coat Hook & Bumper
650-6626

Metal Partitions

Parts For: Flush Metal



Laminate Partitions



Parts For: General & Rockville

Metal Partitions



Latch
650-7630



Latch
650-9093



Strike & Keeper
650-6530



Bumper Hook
650-6632



Top Hinge
650-7265



Bottom Hinge
650-7262



Top Door Trim
650-7624



Hinge Pin
650-7663



Cam Housing
650-7618



Spring Cam
650-8540

Laminate Partitions



Latch
650-7528



Strike & Keeper
650-7633



Bumper Hook
650-6632



Top Hinge
650-6551



Bottom Hinge
650-6557



Hinge Pin
650-7055



Top Door Trim
650-6587



Pintle
650-6986



Cam
650-6923

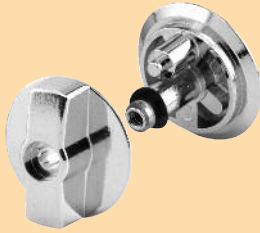


Cam Housing
650-6593

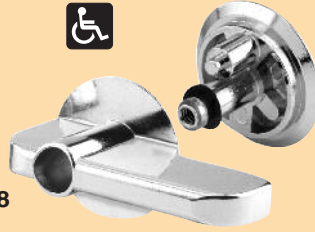
Metal Partitions

Parts For: Global

Latch
656-2702



Latch
656-8918



Strike & Keeper
650-6530



Top Hinge
650-6545



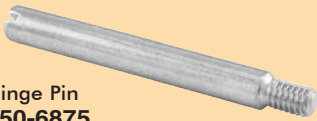
Bottom Hinge
650-6548



Top Door Insert
650-8972



Hinge Pin
650-6875



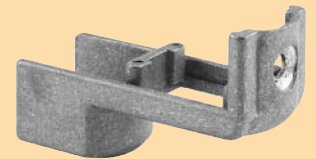
Pintle
650-6986



Cam
650-7232



Cam Housing
650-7822



Laminate Partitions

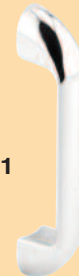
Latch
650-7528



Strike & Keeper
650-6500



Door Pull
650-6641



Door Bumper
650-6638



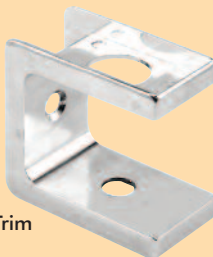
Bumper Hook
650-6626



Top & Bottom
Hinge
650-7543



Top & Bottom Door Trim
650-7540



Hinge Pin
650-7337



Cam & Pintle
Set
650-7534



Parts For: Hadrian

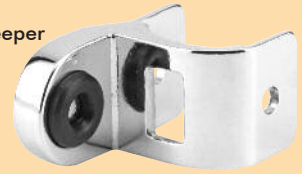
Latch
650-7804



Latch
650-8936



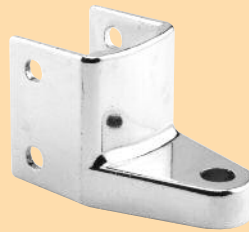
Strike & Keeper
650-7774



Bumper Hook
650-6626



Top Hinge
650-9072



Bottom Hinge
650-9075



Top Hinge
650-9228



Bottom Hinge
650-2802



Top Door Trim
650-9003



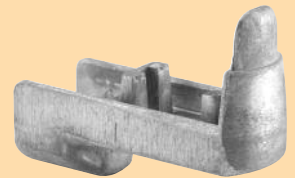
Pintle
650-2778



Cam
650-7786



Cam Holder
650-9267



Upper Hinge Assembly
656-7777



Lower Hinge Assembly
656-7780



Metal Partitions

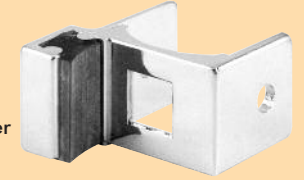
Parts For: Knickerbocker



Latch
650-7630



Latch
650-9093



Strike & Keeper
650-7295



Top Hinge
650-7265



Bottom Hinge
650-7262



Top Door Trim
650-7624



Hinge Pin
650-7663



Pintle
650-7106



Spring Cam
650-7205



Cam Housing
650-7618

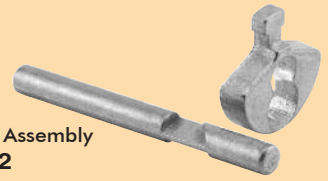
Laminate Partitions



Latch
650-7630



Latch
650-9093



Slide Bolt Assembly
650-7292



Strike & Keeper
650-7633



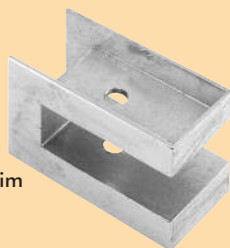
Top Hinge
650-9030



Bottom Hinge
650-9027



Hinge Pin
650-7663



Top Door Trim
650-7301



Pintle
650-7106



Spring Cam
650-7205



Cam Housing
650-7648

Parts For: Metpar

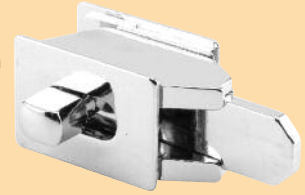
Latch
650-7112



Latch
650-8996



Concealed Latch
with Outside
Indicator
650-6863



Strike & Keeper
650-6533



Top Hinge
650-7217



Bottom Hinge
650-7220



Top Door Trim
650-8780



Hinge Pin
650-6875



Spring Cam
650-7672



Cam Housing
650-7235



Laminate Partitions

Latch
650-6596



Strike & Keeper
650-6482



Strike
650-6488



Top Hinge
650-6551



Bottom Hinge
650-6557



Top Door Trim
650-7133



Hinge Pin
650-7055



Pintle
650-7145



Cam
650-7142



Cam Housing
650-7130

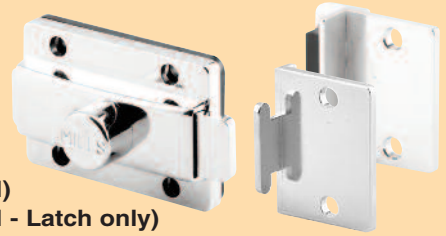


Parts For: Mills

Concealed Latch
656-6797



Latch & Keeper
656-2798
656-2799 (Stainless Steel)
656-2908 (Stainless Steel - Latch only)



Strike & Keeper
650-6869



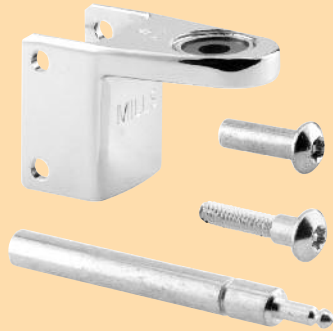
Strike & Keeper
650-6530



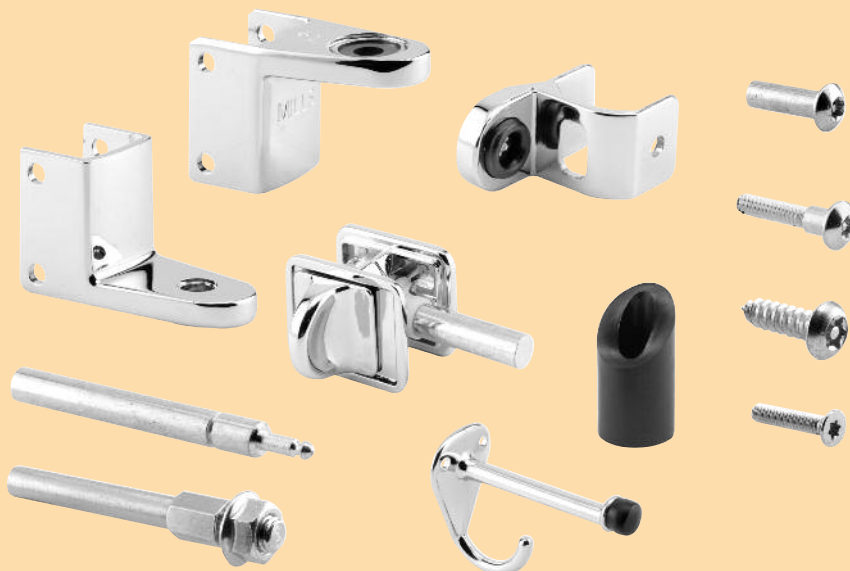
Bumper Hook
650-6626



Top Hinge Kit
656-2905



Bottom Hinge Kit
656-2906



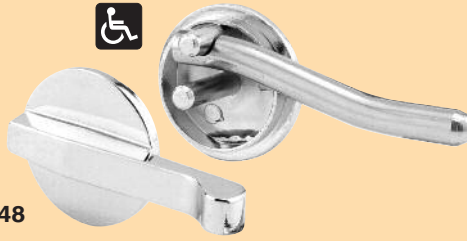
Complete **Mills** Door Pak - Including Necessary Fasteners
656-6737-T

Parts For: Sanymetal

Latch
650-9117



Latch
650-2748



Metal Partitions

Strike & Keeper
650-6530



Top Hinge
650-7169



Bottom Hinge
650-7172



Top Door Trim
650-7163



Hinge Pin
650-6911



Spring Cam
650-6902



Laminate Partitions

Latch
650-7184



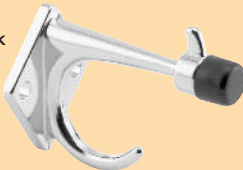
Strike
650-6542



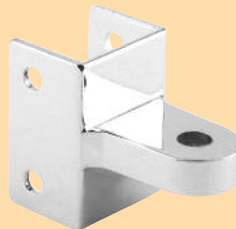
Keeper
650-6872



Bumper Hook
650-7214



Top Hinge
650-7067



Bottom Hinge
650-7070



Top Door Trim
650-7064



Hinge Pin
650-6911



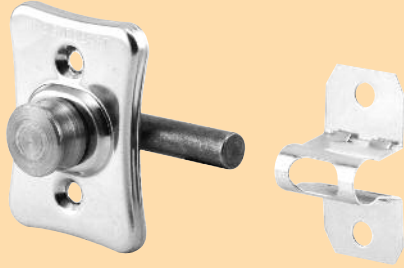
Spring Cam
650-7061



Metal Partitions

Parts For: Weis Robart

Concealed Latch
656-7900



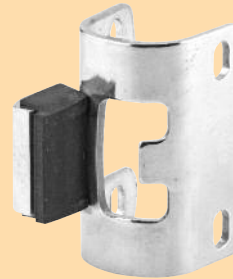
Gravity Hinge Set
656-6572 (Left Hand In-swing)
656-6575 (Right Hand In-swing)



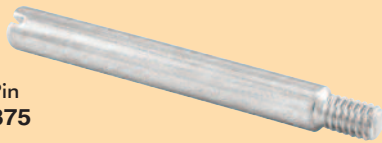
Bumper Hook
650-6626



Strike & Keeper
650-7274



Hinge Pin
650-6875



Round Barrel Hinge Pak
650-7037



Part No.	Page No.	Part No.	Page No.	Part No.	Page No.	Part No.	Page No.	Part No.	Page No.
642-0101	51	645-0135	51	650-1851	39	650-2778	66	650-2886-120	47
642-0104	51	645-0136	51	650-1852	41	650-2802	20, 66	650-2886-157	47
642-0107	51	645-0137	51	650-1853	41	650-2804	55	650-2900-10	42
642-0110	51	645-0138	51	650-1854	41	650-2805	55	650-2900-12	42
642-0113	51	645-0139	51	650-1854-54	41	650-2806	55	650-2900-14	42
642-0116	51	645-0140	52	650-1855	41	650-2809	55	650-2900-16	42
642-0119	51	645-0141	51	650-1856	41	650-2835	41	650-2900-18	42
642-0122	51	645-0142	51	650-1856-41	41	650-2836	41	650-2900-20	42
642-0125	51	645-0143	51	650-1856-54	41	650-2837	41	650-2900-22	42
642-0128	51	645-0144	51	650-1860-10	47	650-2838	41	650-2900-24	42
642-0129	51	645-0145	52	650-1861-10	47	650-2839	41	650-2900-3	42
642-0130	51	645-0146	52	650-1862	40	650-2840	41	650-2900-4	42
642-0132	51	645-0147	52	650-1887	37	650-2841	41	650-2900-5	42
642-0133	51	645-0148	52	650-1899	37	650-2843	34, 61	650-2900-6	42
642-0134	51	645-0149	52	650-1902	39	650-2844	34, 61	650-2900-7	42
642-0135	51	645-0150	52	650-1905	39	650-2845	34	650-2900-8	42
642-0136	51	650-1002	18	650-1920	38, 58	650-2846	34	650-2900-9	42
642-0137	51	650-1005	18	650-1935	37	650-2847	34	650-3001-10	42
642-0138	51	650-1008	18	650-1947	39	650-2848	34	650-3001-12	42
642-0139	51	650-1011	18	650-1950	39	650-2849	25	650-3001-14	42
642-0140	52	650-1014	19, 63	650-1953	39	650-2852	39	650-3001-16	42
642-0141	51	650-1017	19	650-1956	39	650-2854	39	650-3001-18	42
642-0142	51	650-1020	18	650-1965	39	650-2860-102	47	650-3001-20	42
642-0143	51	650-1023	19	650-1968	40	650-2860-120	47	650-3001-24	42
642-0145	52	650-1026	22	650-1968-54	40	650-2861-102	47	650-3001-3	42
642-0146	52	650-1029	19	650-1971	40	650-2861-120	47	650-3001-4	42
642-0147	52	650-1032	20	650-1971-57	40	650-2862-102	47	650-3001-5	42
642-0148	52	650-1035	20	650-1974	40	650-2862-120	47	650-3001-6	42
642-0149	52	650-1038	22	650-1974-41	40	650-2864	13	650-3001-7	42
642-0150	52	650-1041	22	650-1974-57	40	650-2865	58	650-3001-8	42
642-0418	52	650-1044	22	650-2433	46	650-2871	12, 59	650-3001-9	42
642-0454	53	650-1047	22	650-2436	46	650-2872	61	650-3004-10	42
642-0457	53	650-1056	18	650-2439	47	650-2873	61	650-3004-12	42
642-0463	53	650-1059	18	650-2442	47	650-2874	61	650-3004-14	42
642-0466	53	650-1062	18	650-2445	47	650-2875	61	650-3004-16	42
642-0469	52	650-1065	18	650-2448	46	650-2881-10	42	650-3004-18	42
642-0472	53	650-1068	18	650-2451	46	650-2881-12	42	650-3004-20	42
642-0508	53	650-1071	18	650-2454	25	650-2881-14	42	650-3004-22	42
642-0636	52	650-1074	19, 63	650-2457	26	650-2881-16	42	650-3004-24	42
642-0648	53	650-1077	19	650-2460	25	650-2881-18	42	650-3004-3	42
642-0651	53	650-1080	19	650-2463	26, 62	650-2881-20	42	650-3004-4	42
642-0654	53	650-1083	18	650-2466	25	650-2881-24	42	650-3004-5	42
642-0656	53	650-1086	18	650-2469	27	650-2881-3	42	650-3004-6	42
642-0668	52	650-1089	19	650-2472	26	650-2881-4	42	650-3004-7	42
645-0101	51	650-1092	22	650-2475	26	650-2881-5	42	650-3004-8	42
645-0104	51	650-1095	22	650-2481	25	650-2881-6	42	650-3004-9	42
645-0107	51	650-1098	22	650-2484	26, 62	650-2881-7	42	650-3005-10	42
645-0110	51	650-1101	22	650-2487	27	650-2881-8	42	650-3005-12	42
645-0113	51	650-1833	58	650-2490	28	650-2881-9	42	650-3005-14	42
645-0116	51	650-1836	39	650-2493	28	650-2882-102	47	650-3005-16	42
645-0119	51	650-1839	39	650-2502	48	650-2882-120	47	650-3005-18	42
645-0122	51	650-1844	39	650-2505	48	650-2882-157	47	650-3005-20	42
645-0128	51	650-1845	58	650-2601	30	650-2882-62	47	650-3005-24	42
645-0129	51	650-1846	40	650-2604	30	650-2882-84	47	650-3005-3	42
645-0131	51	650-1848	39	650-2748	70	650-2883-157	47	650-3005-4	42
645-0132	51	650-1849	40	650-2759	13	650-2884-157	47	650-3005-5	42
645-0134	51	650-1850	40	650-2770	16	650-2886-102	47	650-3005-6	42

Index

Part No.	Page No.	Part No.	Page No.	Part No.	Page No.	Part No.	Page No.	Part No.	Page No.
650-3005-8.....	42	650-6252.....	4	650-6593.....	27, 64	650-7055.....	30, 59, 60, 64, 68	650-7633.....	13, 62, 64, 67
650-3006-10.....	42	650-6252.....	4, 15	650-6596.....	4, 57, 59, 60, 62, 63, 68	650-7061.....	27, 70	650-7648.....	67
650-3006-12.....	42	650-6350.....	34	650-6599.....	4	650-7064.....	27, 70	650-7651.....	19
650-3006-18.....	42	650-6353.....	34	650-6602.....	4, 62	650-7067.....	20, 70	650-7660.....	19
650-3006-20.....	42	650-6356.....	34, 59	650-6608.....	5	650-7070.....	20, 70	650-7663.....	30, 64, 67
650-3006-24.....	42	650-6365.....	34	650-6614.....	6, 54, 62	650-7106.....	29, 67	650-7669.....	28
650-3006-3.....	42	650-6368.....	34	650-6617.....	7, 56, 63	650-7112.....	6, 60, 68	650-7672.....	29, 68
650-3006-4.....	42	650-6377.....	35	650-6626.....	16	650-7124.....	24, 55	650-7774.....	66
650-3006-5.....	42	650-6380.....	34	650-6626.....	16, 57, 59, 60, 61, 62, 65, 66, 69, 71	650-7130.....	25, 63, 68	650-7786.....	66
650-3006-6.....	42	650-6383.....	34, 59	650-6632.....	16, 55, 64	650-7133.....	25, 63, 68	650-7804.....	7, 66
650-3006-8.....	42	650-6392.....	34	650-6635.....	16	650-7142.....	29, 63, 68	650-7822.....	28, 65
650-3007-10.....	43	650-6395.....	34	650-6638.....	17, 65	650-7145.....	29, 56, 63, 68	650-7849.....	30
650-3007-12.....	43	650-6404.....	35	650-6638-1.....	17	650-7163.....	28, 70	650-7901.....	54
650-3007-14.....	43	650-6407.....	35	650-6641.....	17, 65	650-7169.....	23, 70	650-7902.....	54
650-3007-18.....	43	650-6410.....	35	650-6641-1.....	17	650-7172.....	23, 70	650-7903.....	54
650-3007-24.....	43	650-6413.....	36	650-6644.....	17, 59, 62	650-7184.....	4, 62, 70	650-7904.....	54
650-3007-3.....	43	650-6416.....	36	650-6647.....	48	650-7205.....	29, 67	650-7939.....	18
650-3007-4.....	43	650-6419.....	36, 59	650-6650.....	50	650-7214.....	16, 70	650-7996.....	5, 15
650-3007-5.....	43	650-6422.....	36	650-6653.....	50	650-7217.....	23, 68	650-8017.....	30, 63
650-3007-6.....	43	650-6428.....	36	650-6656.....	50	650-7220.....	23, 68	650-8023.....	54
650-3007-7.....	43	650-6431.....	36	650-6659.....	48	650-7226.....	30, 57	650-8091.....	36
650-3007-8.....	43	650-6434.....	36	650-6662.....	48, 59	650-7232.....	29, 57, 63, 65	650-8133.....	37
650-4005.....	54	650-6436.....	36	650-6663.....	48	650-7235.....	28, 57, 68	650-8134.....	38
650-4008.....	58	650-6437.....	36	650-6664.....	48	650-7259.....	17	650-8135.....	38
650-4010.....	58	650-6440.....	36	650-6668.....	48	650-7262.....	23, 64, 67	650-8136.....	37
650-4011.....	58	650-6443.....	36	650-6669.....	48	650-7265.....	23, 64, 67	650-8139.....	37
650-4012.....	54	650-6446.....	35	650-6670.....	48	650-7274.....	71	650-8142.....	37, 58
650-4013.....	54	650-6449.....	35	650-6671.....	46	650-7277.....	55	650-8145.....	37
650-4014.....	54	650-6473.....	49, 59	650-6672.....	49	650-7283.....	24, 56	650-8148.....	37
650-4015.....	54	650-6477.....	49	650-6673.....	49	650-7292.....	67	650-8151.....	37
650-4020.....	17	650-6482.....	11, 56, 57, 60, 62, 63, 68	650-6674.....	49	650-7295.....	67	650-8154.....	37
650-4020-1.....	17	650-6485.....	11	650-6675.....	49	650-7301.....	67	650-8157.....	37, 58
650-4021.....	35	650-6488.....	11, 57, 62, 63, 68	650-6676.....	49	650-7328.....	28	650-8160.....	37
650-4022.....	35	650-6491.....	12	650-6689.....	48	650-7337.....	55, 65	650-8163.....	37
650-4023.....	6	650-6494.....	13	650-6690.....	48	650-7349.....	26	650-8166.....	37
650-4024.....	6	650-6497.....	13	650-6863.....	6, 68	650-7431.....	4, 51, 59	650-8169.....	37
650-4025.....	6	650-6500.....	11, 60, 65	650-6866.....	16	650-7449.....	29, 56	650-8172.....	37
650-4026.....	7	650-6501.....	11	650-6869.....	69	650-7452.....	16	650-8175.....	37
650-4027.....	5	650-6503.....	12	650-6872.....	70	650-7455.....	4	650-8178.....	37
650-4028.....	50	650-6506.....	12, 59, 60	650-6875.....	30, 57, 63, 68, 71	650-7461.....	11	650-8179.....	38
650-4029.....	40	650-6509.....	12	650-6896.....	54	650-7464.....	34	650-8180.....	38
650-4030.....	40	650-6512.....	12	650-6899.....	54	650-7467.....	19	650-8181.....	37
650-4030-57.....	40	650-6515.....	10	650-6902.....	28, 70	650-7528.....	6, 52, 56, 57, 60, 64, 65	650-8182.....	38
650-4031.....	40	650-6518.....	10	650-6908.....	7, 56, 63	650-7534.....	29, 55, 60, 65	650-8184.....	37
650-4031-57.....	40	650-6521.....	10	650-6911.....	30, 70	650-7540.....	55, 60, 65	650-8187.....	37
650-4032.....	40	650-6530.....	10, 56, 63, 64, 65, 69, 70	650-6923.....	29, 57, 59, 64	650-7543.....	21, 55, 60, 65	650-8190.....	37
650-4033.....	40	650-6533.....	10, 68	650-6986.....	29, 57, 59, 62, 63, 64, 65	650-7549.....	24, 55	650-8193.....	37
650-4035.....	50	650-6536.....	12, 57, 59	650-7016.....	55	650-7552.....	55	650-8196.....	37
650-4036**.....	50	650-6539.....	13	650-7019.....	46	650-7555.....	55	650-8199.....	37
650-4037**.....	50	650-6542.....	13, 57, 59, 70	650-7037.....	30, 71	650-7558.....	55	650-8202.....	37
650-4046.....	61	650-6545.....	23, 57, 63, 65	650-7038.....	31	650-7561.....	55	650-8205.....	37
650-4047.....	61	650-6548.....	23, 57, 63, 65	650-7040.....	24, 56	650-7606.....	54	650-8217.....	58
650-4048.....	32	650-6551.....	19, 68	650-7046.....	30, 56	650-7615.....	29, 62	650-8223.....	14
650-4049.....	32	650-6557.....	19, 68			650-7618.....	28, 64, 67	650-8226.....	14
650-4051.....	5	650-6587.....	27, 64			650-7624.....	28, 64, 67	650-8229.....	17
650-4057.....	16					650-7630.....	7, 64, 67	650-8297.....	4
650-4061.....	37							650-8300.....	35

Part No.	Page No.	Part No.	Page No.	Part No.	Page No.	Part No.	Page No.	Part No.	Page No.
650-8342	35	650-9093	7, 64, 67	650-9780	34	651-0475	52	656-2022	33
650-8366	48	650-9108	5	650-9783	34	651-0481	53	656-2701	17
650-8372	35	650-9117	70	650-9837	15	651-0488	52	656-2702	65
650-8396	18, 62	650-9135	17	650-9840	11	651-0490	52	656-2798	5, 69
650-8399	18, 62	650-9168	35	650-9849	27	651-0491	52	656-2799	5, 69
650-8402	30, 62	650-9186	40	650-9867	17	651-0508	53	656-2869	32
650-8480	11	650-9225	32	650-9870	17	651-0612	53	656-2870	32
650-8489	23	650-9228	20, 66	650-9882	35	651-0615	53	656-2905	69
650-8492	18	650-9231	12	650-9885	34	651-0618	53	656-2906	69
650-8507	34	650-9234	22	650-9888	35	651-0621	53	656-2908	5
650-8513	49	650-9237	22	650-9891	35	651-0624	53	656-6572	32, 71
650-8514	49	650-9246	11, 59	650-9894	35	651-0627	53	656-6575	32, 71
650-8519	17	650-9249	4, 15	650-9897	35	651-0630	53	656-6686	44
650-8522	17	650-9252	5, 58	650-9900	35	651-0633	53	656-6710	50
650-8531	40, 61	650-9255	10	650-9903	36	651-0636	53	656-6713	50
650-8531-41	40	650-9258	32	650-9906	36	651-0639	53	656-6737-T	69
650-8531-54	40	650-9267	28, 66	650-9909	11	651-0642	53	656-6797	6, 69
650-8540	29, 64	650-9282	34	650-9912	11	651-0645	53	656-7777	24, 66
650-8543	5, 61	650-9297	46	650-9915	11	651-0648	53	656-7780	24, 66
650-8618	4	650-9318	23	650-9918	12	651-0651	53	656-7900	71
650-8624	31	650-9360	22	650-9921	13	651-0654	53	656-8056	31
650-8625	31	650-9363	22	650-9924	13	651-0656	53	656-8237	32, 58
650-8626	31	650-9375	11, 59	650-9927	13	651-0657	53	656-8240	32, 58
650-8627	31	650-9384	36	650-9930	13	651-0660	53	656-8621	31
650-8636	12	650-9387	34	650-9933	10	651-0663	53	656-8918	65
650-8726	16	650-9399	32	650-9936	10	651-0666	53	656-9009	31
650-8727	16	650-9400	33	650-9939	11	651-0668	52	656-9012	31
650-8738	35	650-9401	33	650-9942	11	656-1000	8	656-9024	43
650-8744	12	650-9402	33	650-9945	11	656-1001	8	656-9066	32
650-8759	7	650-9403	33	650-9948	14	656-1002	9	656-9069	32
650-8759	56, 63	650-9405	17	650-9951	14	656-1003	8	656-9219	44
650-8771	22	650-9406	32	650-9954	14	656-1004	8	656-9312	45
650-8774	36	650-9407	32	650-9957	14	656-1005	9	656-9378	31
650-8780	28, 57, 68	650-9409	33	650-9960	14	656-1006	9	656-9381	31
650-8786	34	650-9410	33	650-9963	14	656-1770	45	656-9408	45
650-8792	34	650-9435	36	650-9966	14	656-1773	45	656-9552	31
650-8840	19, 59	650-9462	28, 63	650-9969	15	656-1776	44	656-9615	45
650-8843	19, 59	650-9465	28, 63	650-9972	14	656-1782	45	656-9618	45
650-8873	34	650-9468	12	650-9975	15	656-1785	45	656-9873	5, 58
650-8876	34	650-9486	4	650-9978	15	656-1788	45	656-9874	5
650-8879	12	650-9492	17	650-9981	15	656-1797	44	656-9996	45
650-8912	21	650-9499	34	650-9984	15	656-1977	31		
650-8936	7, 66	650-9520	4	650-9987	15	656-1980	31		
650-8963	34	650-9537	16	650-9990	15	656-1983	31		
650-8972	28, 65	650-9588	11	650-9993	15	656-1986	31		
650-8996	6, 60, 68	650-9594	19	650-9999	18	656-1989	31		
650-8999	6	650-9597	39	651-0358	53	656-1992	32		
650-9000	6, 54, 62	650-9600	13	651-0361	52	656-1995	32		
650-9003	28, 66	650-9660	21, 56	651-0409	53	656-1998	32		
650-9006	13	650-9663	21, 56	651-0415	53	656-1999	58		
650-9027	20, 67	650-9666	56	651-0418	53	656-2001	32		
650-9030	20, 67	650-9669	56	651-0454	53	656-2004	43		
650-9033	34	650-9672	56	651-0457	53	656-2007	32		
650-9072	24, 66	650-9687	36	651-0463	53	656-2010	32		
650-9075	24, 66	650-9741	25	651-0466	53	656-2013	32		
650-9087	55	650-9750	40, 61	651-0469	52	656-2016	32		
650-9090	37	650-9750-54	40	651-0472	53	656-2019	33		

Notes

Notes



ZZ-427 (03-11)
©2011 Prime-Line

PRIME-LINE[®]

26950 San Bernardino Ave., Redlands, CA 92374
(909) 887-8118 • FAX - (909) 880-8968
Outside CA - (800) 255-3505 • FAX - (800) 437-7405

PRIME-LINE



on the WEB...
WWW.PRIME-LINE-PRODUCTS.COM