

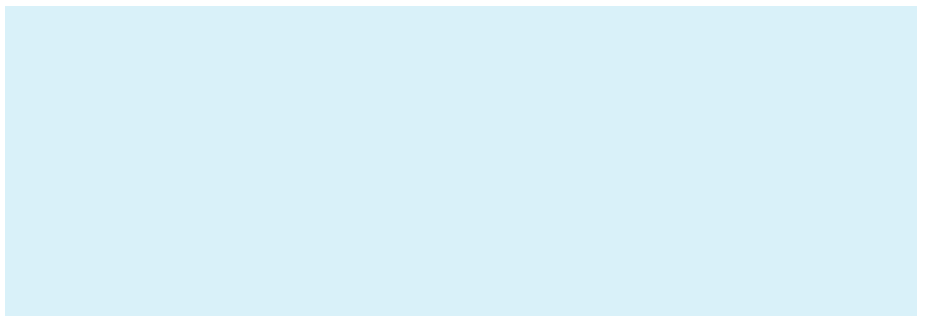
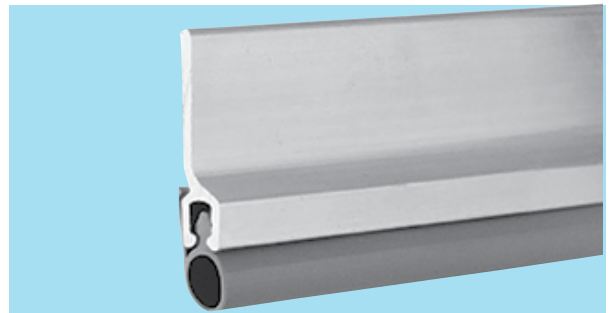
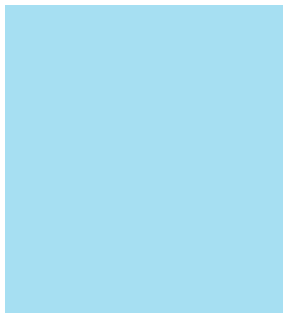
# Product Cross Reference

**ASSA ABLOY**

## ARCHITECTURAL DOOR ACCESSORIES™

Markar | McKinney | Pemko | Rockwood

The global leader in  
door opening solutions



## Markar Continuous Pin and Barrel Hinges

Markar Part No.	Description	McKinney Part No.	ABH	Gallery	Hager	Ives	PBB	Select	Stanley	Zero
FM3500	Stainless Steel Full Mortise Security Hinge	MCK-FM3500	A5500	CH931	---	---	---	SL3500	651HD	---
HG3505	Stainless Steel Adjustable Security Hinge Guard	MCK-HG3505	A5505	---	---	---	---	---	652HD	---
FM300	Stainless Steel Full Mortise	MCK-FM300	A500	CH951	790-900	700	CH51	SL300	651	919STST
FS301	Stainless Steel Full Surface 1/8" Inset	MCK-FS301	---	---	---	---	CH53I	---	---	---
FS302	Stainless Steel Full Surface Flush	MCK-FS302	A502	CH957	---	702	CH53	SL302	657	913STST
HS303	Stainless Steel Half Surface	MCK-HS303	A503	---	790-903	---	CH54	SL303	---	913STST
HM304	Stainless Steel Half Mortise	MCK-HM304	A504	CH954	790-904	---	CH52	---	654	---
HG305	Stainless Steel Adjustable Hinge Guard	MCK-HG305	A505	CH952	790-905	705	CH51G	SL305	652	918STST
HG306	Stainless Steel Hinge Guard	MCK-HG306	A506	CH955	790-906	---	CH52L	SL306	655	---
EG308	Stainless Steel Adjustable Edge Guard	---	A538S/A538B	---	---	---	CH5LB/CH5LS	SL308	EG2/EG2B	---
EGC308	Stainless Steel Single Return Edge Guard	---	A528S/A528B	---	---	---	CH5GB/CH5GS	---	EG1/EG1B	---
EGT308	Stainless Steel Adjustable Edge Guard/Astragal	---	A548S/A548B	---	---	---	CH5AB/CH5AS	---	EG3/EG3B	---
HG310	Stainless Steel Adjustable Swing Clear Hinge Guard	MCK-HG310	A510	---	---	---	CH52CG	SL310	---	---
HG311	Stainless Steel Swing Clear Hinge Guard	MCK-HG311	A511	CH956	790-911	711	CH52CL	SL311	656	---
HG315	Stainless Steel Hinge Guard	MCK-HG315	A515	CH953	790-915	715	CH51L	SL315	653	917STST
HG326	Stainless Steel Adjustable Swing Clear Hinge Guard	MCK-HG326	A526	---	790-926	---	---	---	---	---
HG329	Stainless Steel Swing Clear Hinge Guard	---	A529	---	---	---	---	---	---	---
FM338	Stainless Steel Full Mortise (1 3/8" thick door)	---	---	---	---	---	---	---	---	---
FM200	Zinc Plated Steel Full Mortise	MCK-FM3700	---	CH941	---	600	---	SL200	641	919SP
FS201	Zinc Plated Steel Full Surface 1/8" Inset	MCK-FS3701	---	---	---	---	---	---	---	---
FS202	Zinc Plated Steel Full Surface Flush	MCK-FS3702	---	CH947	---	602	---	---	647	---
HS203	Zinc Plated Steel Half Surface	MCK-HS3703	---	---	---	---	---	---	---	---
HM204	Zinc Plated Steel Half Mortise	---	---	CH944	---	---	---	---	644	---
FM100	Aluminum Full Mortise	---	---	---	---	---	---	---	---	---
FS101	Aluminum Full Surface 1/8" Inset	---	---	---	---	---	---	---	---	---
FS102	Aluminum Full Surface Flush	---	---	---	---	---	---	---	---	---
HS103	Aluminum Half Surface	---	---	---	---	---	---	---	---	---
HM104	Aluminum Half Mortise	---	---	---	---	---	---	---	---	---
HG105	Aluminum Adjustable Hinge Guard	---	---	---	---	---	---	---	---	---

# Pemko Continuous Geared Hinges

Pemko Part No.	Description	McKinney Part No.	ABH	Bommer	Cal-Royal	Hager	Ives	PBB	Roton	Select	Stanley	Zero
X25M	X-Series Full Mortise for 2 1/2" Thick Door	---	---	---	---	1200-650XHD	---	---	1200-650XHD	---	---	---
OSFMHD1	Offset Full Mortise, Heavy Duty Grade 1	---	A410HD	---	---	780-041HD	---	CG31CL (grade 3)	780-041HD	SL41HD	---	---
OSHSHD1	Offset Half Surface, Heavy Duty Grade 1	---	A211HD	---	---	780-211HD	---	---	780-211HD	---	---	---
FMHD1	Full Mortise, Heavy Duty Grade 1	MCK-25HD	A140HD/ A240HD	---	---	780-224HD	224HD	---	780-224HD	SL24HD	662HD	---
FMHD3	Full Mortise, Heavy Duty Grade 3	---	---	FMHD	CRHD782240	---	---	CG31L	---	---	---	914DB
FMSLIHD1	Full Mortise Short Leaf Inset, Heavy Duty Grade 1	MCK-14HD	A160HD	---	---	780-111HD	---	---	780-111HD	SL18HD	---	---
FMSLIHD3	Full Mortise Short Leaf Inset, Heavy Duty Grade 3	---	---	FMSLIHD	---	---	---	CG31I	---	---	---	---
FMSLFHD1	Full Mortise Short Leaf Flush, Heavy Duty Grade 1	MCK-12HD	A110HD/ A270HD	---	---	780-112HD/ 780-226HD	112HD	---	780-112HD/ 780-226HD	SL11HD	661HD	---
FMSLFHD3	Full Mortise Short Leaf Flush, Heavy Duty Grade 3	---	---	FMSLFHD	CRHD781120	---	---	CG32	---	---	---	910DB
FMSLF138-HD1	Full Mortise Short Leaf Flush for 1 3/8" thick Door Heavy Duty Grade 1	---	---	---	---	---	---	---	---	SL38HD	---	---
HSHD1	Half Surface, Heavy Duty Grade 1	MCK-54HD	A540HD	---	---	780-054HD	054HD	---	780-054HD	SL54HD	663HD	---
HSHD3	Half Surface, Heavy Duty Grade 3	---	---	HSHD	CRHD780530	---	---	---	---	---	---	921DB
HMHD1	Half Mortise, Heavy Duty Grade 1	---	---	---	---	---	---	---	---	---	---	---
HMHD3	Half Mortise, Heavy Duty Grade 3	---	---	---	---	---	---	---	---	---	---	922DB
FSHD1	Full Surface, Heavy Duty Grade 1	MCK-22HD	A210HD	---	---	780-210HD	210HD	---	780-210HD	SL21HD	665HD	---
FSHD3	Full Surface, Heavy Duty Grade 3	---	---	FSHD	CRHD782100	---	---	CG33C	---	---	---	930DB
FSCPHD1	Full Surface Center Pivot, Heavy Duty Grade 1	MCK-58HD	A570HD	---	---	780-157HD	157HD	---	780-157HD	SL57HD	---	---
FSCPHD3	Full Surface Center Pivot, Heavy Duty Grade 3	---	---	---	CRHD781570	---	---	CG33N	---	---	---	935DB
FSBPHD1	Full Surface Balanced Pivot, Heavy Duty Grade 1	---	A571HD	---	---	780-057HD	---	---	780-057HD	---	664HD	---
FSBPHD3	Full Surface Balanced Pivot, Heavy Duty Grade 3	---	---	---	CHRD780570	---	---	---	---	---	---	936DB
SPFMSLIHD1	Special Full Mortise Short Leaf Inset, Heavy Duty Grade 1	---	A260HD	---	---	---	---	---	---	SL48HD	---	---
KFM-HD1	Kawneer Full Mortise, Heavy Duty Grade 1	K-MCK-12HD	A150HD	---	---	---	---	---	---	---	---	---
FMSLISF-HD1	Full Mortise Short Leaf Inset Safety, Heavy Duty Grade 1	MCK-38HD	A130HD	---	---	780-113HD	---	---	780-113HD	SL71HD	---	---
FM-1100	Full Mortise, Extra Heavy Duty	---	A140LL	---	---	---	---	---	---	---	---	---
FMSLI-1100	Full Mortise Short Leaf Inset, Extra Heavy Duty	---	A160LL	---	---	---	---	---	---	SL18LL	---	---
FMSLF-1100	Full Mortise Short Leaf Flush, Extra Heavy Duty	---	A110LL	---	---	1200-600XHD	---	---	1200-600XHD	SL11LL	---	---
WTFMHD1	Wide Throw Full Mortise, Heavy Duty Grade 1	MCK-WTFMHD	A110WT	WTFM (grade 3)	---	780-235HD	---	---	780-235HD	SL40HD	---	---
WTHSHD1	Wide Throw Half Surface, Heavy Duty Grade 1	---	---	---	---	---	---	---	---	---	---	---
HSSF	Half Surface Safety	---	---	---	---	780-155	---	---	780-155	---	---	---
HSSF-HD1	Half Surface Safety, Heavy Duty Grade 1	---	A550HD	---	---	780-155HD	---	---	780-155HD	---	---	---
RS138	Full Mortise Residential for 1 3/8" Thick Door	---	---	---	---	750-138	---	---	750-138	---	---	---
RS175	Full Mortise Residential for 1 3/4" Thick Door	---	---	---	---	750-134	---	---	750-134	---	---	---

Disclaimer: This is a comparison for like product. This is not a legal or binding document. Consult manufacturer's catalogs for additional information. Copyright © 2015-2017, ASSA ABLOY Door Security Solutions, an ASSA ABLOY Group company. All rights reserved. Reproduction in whole or in part without the express written permission of ASSA ABLOY Door Security Solutions is prohibited.

For more information call Markar Products / Pemko Products 1-800-824-3018

## MacPro® Hinges

McKinney Part No.	Hager	Ives	PBB	Stanley
MP79	EC1100	5PB1	PB81	F179
MP79 NRP	EC1100 NRP	5PB1 NRP	PB81 NRP	F179 NRP
MPB79	ECBB1100	5BB1	BB81	FBB179
MPB79 NRP	ECBB1100 NRP	5BB1 NRP	BB81 NRP	FBB179 NRP
MPB91.32D	ECBB1101 32D	5BB1 32D	BB51 32D	FBB191
MPB91 NRP .32D	ECBB1101 32D NRP	5BB1 32D NRP	BB51 32D NRP	FBB191 NRP
MPB99.32D	ECBB1103 32D	5BB1HW32D	4B51 32D	FBB199
MPB99 NRP.32D	ECBB1103 NRP	5BB1HW 32D NRP	4B51 32D NRP	FBB199 NRP
MPB68 26D	ECBB1102 26D	5BB1HW	4B81	FBB168
MPB68 26D NRP	ECBB1102 NRP	5BB1HWNRP	4B81 NRP	FBB168 NRP
MPS60	EC1105	3SP1	SP81	2060

## McKinney Hinges

McKinney Part No.	ANSI	Bommer	Hager	Stanley
1001	K81041	3029	-	-
1400	-	-	1741	741
1414	-	-	RC1741	RD741
1458	-	-	RC1841	RD758
1502	K81071	4310	1250	2060
1572	K81081	4313	1253	2063
3001	K82183	7811	-	-
8007	K82011	7512	-	-
9001	K81041	3029 (8')	-	-
19001	K81111	3024	-	-
4007MRB/4007RB	-	7112	-	-
BP-10/BP-11	-	-	417/418	BP-1
DLS-8	-	-	451	DLS-1
DS-6	A1882	-	610	ES-1
EP-5J	A2742	-	-	DAP-3
H8007	K82021	H7512	-	-

## McKinney Hinges (Continued)

McKinney Part No.	ANSI	Bommer	Hager	Stanley
HS1001	K81131	3023	-	-
J3001	-	7812	-	-
MG-16	-	MB-1	-	JB-1
T2314	A2133	5001	1191	F191
T2314-32D	A5133	5002	-	-
T2714	A8133	5000	1279	F179
T4A3381	A2311	-	BB2109	FBB109
T4A3382	A2411	BB5305	BB2113	FBB113
T4A3384	A2211	BB5105	BB2098	BB98
T4A3386	A2111	BB5005	BB1199	FBB199
T4A3781	A8311	-	BB2169	FBB169
T4A3782	A8411	BB5304	BB1163	FBB163
T4A3784	A8211	BB5104	BB1138	FBB138
T4A3786	-	BB5004	BB1168	FBB168
T4A3789	A8221	BB5124	BB1264	FBB264
T4A3795	A8121	-	BB1262	FBB268
T4A3796	A8421	BB5324	BB1270	-
T4A4789	-	-	BB1265	FBB274
T4A4795	-	-	BB1263	FBB278
T714	A8133	8000	700	1900
TA2314	A2112	BB5001	BB1191	FBB191
TA2314-32D	A5112	BB5002	-	FBB191
TA2314 Slip-in	-	-	BB1577	FBB191 Slip-in
TA2371	-	-	BB2110	-
TA2372	A2412	BB5301	BB2112	FBB112
TA2372-32D	A5412	BB5302	-	-
TA2395	-	BB5021	-	-
TA2398	-	BB5011	-	-
TA2714	A8112	BB5000	BB1279	FBB179
TA2714 Slip-in Type 2	A8142	BB5050	-	-
TA2717 Slip-in	A8152	-	BB1277	-

## McKinney Hinges (Continued)

McKinney Part No.	ANSI	Bommer	Hager	Stanley
TA2731	A8112	–	AB920	CB700
TA2771	A8312	BB5200	BB2171	FBB171
TA2772	A8412	BB5300	BB1173	FBB173
TA2774	A8212	–	BB1129	FBB167
TA2798	–	BB5010	WTBB 1279	FBB179WT
TA2895	A8122	BB5020	BB1260	FBB248
TA314	A2112	BB8001	AB800	CB1960
TA3329	A1711	–	–	BB93
TA3374	A2212	BB5101	BB1109	FBB108
TA3383	A1612	–	–	BB95
TA371	–	BB8201	AB802	CB1990
TA372	–	BB8301	AB803	CB1970
TA374	A2212	BB8101	AB801	CB1980
TA3795	–	BB5024	–	–
TA381	A2311	BB8205	AB852	CB1991
TA382	A2411	BB8305	AB853	CB1971
TA384	A2211	BB8105	AB851	CB1981
TA386	A2111	–	AB850	CB1961
TA392	A2551	BB8036	AB8506	FBB222
TA393	A2551	–	AB858	FBB221
TA4895	–	–	BB1261	FBB258
TA5392	A2551	–	AB8507	FBB223
TA5789	–	–	AB7512	CB1942
TA5792	A8551	–	AB7507	FBB213
TA5795	–	–	AB7501	CB1949
TA714	A8112	BB8000	AB700	CB1900
TA771	A8312	BB8200	AB702	CB1930
TA772	A8412	BB8300	AB703	CB1910
TA774	A8212	BB8100	–	CB1920
TA781	A8311	BB8204	AB752	CB1931

McKinney Part No.	ANSI	Bommer	Hager	Stanley
TA782	A8411	BB8304	AB753	CB1911
TA784	A8211	BB8104	AB751	CB1921
TA786	A8111	–	AB750	CB1901
TA789	A8221	BB8124	AB7511	CB1941
TA792	A8551	BB5034	AB7506	CB1908
TA793	A8551	–	AB7505	FBB211
TA795	A8121	BB8024	AB7501	CB1948
TA796	A8421	BB8324	AB7534	CB1959
TA797	A8321	BB8224	AB7523	CB1951

Disclaimer: This is a comparison for like product. This is not a legal or binding document. Consult manufacturer's catalogs for additional information. Copyright © 2015-2017, ASSA ABLOY Door Security Solutions, an ASSA ABLOY Group company. All rights reserved. Reproduction in whole or in part without the express written permission of ASSA ABLOY Door Security Solutions is prohibited.

Many more hinges and options are available. For information call McKinney Products 1-800-346-7707 or visit [www.mckinneyhinge.com](http://www.mckinneyhinge.com).

## Pemko Thresholds and Gasketing

Pemko Part No.	Description	Hager	NGP	Reese	Draftseal	Zero	KN Crowder	DHSI
151_	Saddle Threshold, 1/4 x 3	418S	411	S263	DS3000	63	-	-
154_	Smooth Top Saddle Threshold, 1/2 x 5	492S	512	S105	DS505*	-	-	-
157_	Transition/Offset Threshold, 1/2" offset x 5 1/2	407S	655	S512	-	104*	-	-
170_	Saddle Threshold, 1/2 x 4	404S	424* / 424FC*	S204* /S424 /S4L	DS400*	-	CT-9	-
171_	Saddle Threshold, 1/2 x 5	412S	425*	S205*	DS500*	8655	CT-10	-
172_	Saddle Threshold, 1/2 x 6	415S	426*	S206*	DS600*	656*	CT-11	-
173_	Saddle Threshold, 3/16 x 2 1/4	436S	410	S225	DS2000	-	CT-31	-
174_	Carpet Divider, 3/8 x 2 1/2	503S*	417*	S266	-	-	-	-
175_	Saddle Threshold, 1/2 x 4	404S*	412	-	-	164*	-	-
176_	Saddle Threshold, 1/2 x 7	476S	427*	S207*	DS700*	6570*	CT-12	-
18/1A	Smooth Surface Threshold, 1/8" thick	676SMIL	408 /818 /8132	BAP18	-	600CP	-	-
18041_NB	Brush Gasketing	893S	9600*	804*	DS163NB	8193A.	-	-
18061_NB	Brush Gasketing	802S	600*	964	DS148*	-	W25	-
18100_NB	Brush Gasketing	801SB*	601*	967	DS149*	-	W24S	-
18137_NB	Brush Gasketing	806SB*	E609	965	DS150*	-	-	-
18175_NB	Brush Gasketing	-	G610	973	DS144P	-	W33S	-
190_	Floor Plate, Adj Threshold Component, 1/4 x 2	440S	8142	232	-	672	-	-
191_	Floor Plate, Adj Threshold Component, 1/4 x 3	445S	8143	233*	-	673	-	-
192_	Floor Plate, Adj Threshold Component, 1/4 x 4	450S	8144	234	-	674	-	-
193_	Floor Plate, Adj Threshold Component, 1/4 x 6 1/8	460S	8146*	236	-	676	-	-
196_	Floor Plate End Support, 1/4 x 1 1/8	484S	8134*	261	-	69	CT-23	-
2005_T	Latching Panic Exit Threshold, 1/2 x 5	520SN	-	S483	DS178N	65	-	-
210APK	Door Shoe with Rain Drip, 1 1/4"	777SNMIL	118N	-	DS210*	-	-	-
211APK	Door Shoe, 1 1/4"	-	313NA*	-	DS211AT	153A	-	-
216APK	Door Shoe with Rain Drip, 1 3/4"	778SNDBA	119NA*	-	DS216*	-	-	-
2173AV	Door Shoe, Triple Fin, 1 3/4"	-	26NA*	-	-	111A-FLO / 111A	-	-
221APK	Door Shoe/Kickplate, 1 3/4"	782SNMIL	99NA	-	DS212*	-	-	-
234APK	Mortise Sweep, 1 3/16"	774SNMIL	112N*	-	DS234	253A	-	-
252_	Half Saddle Threshold, 1/2 x 2	-	321	S470*	DS222*	622	CT-44-1	-
252x226AFGT	Frost Guard Latching Threshold, 1/2 x 4 1/8	515SNMIL	8434S*	-	DS177X4TBAT	-	-	-
252x3_FG	Frost Guard Saddle Threshold, 1/2 x 5 1/18	421S	8425	S282*	DS501TB*	625	CT-45	-

\*competitor's products are similar in function, but may vary slightly in dimensions

Disclaimer: This is a comparison for like product. This is not a legal or binding document. Consult manufacturer's catalogs for additional information. Copyright © 2015-2017, ASSA ABLOY Door Security Solutions, an ASSA ABLOY Group company. All rights reserved. Reproduction in whole or in part without the express written permission of ASSA ABLOY Door Security Solutions is prohibited.

Many more products and options are available. For information call Pemko Products 1-800-824-3018 or visit [www.pemko.com](http://www.pemko.com)

## Pemko Thresholds and Gasketing (Continued)

Pemko Part No.	Description	Hager	NGP	Reese	Draftseal	Zero	KN Crowder	DHSI
253_	Half Saddle Threshold, 1/2 x 3	433S	322	S283*	DS333*	1673*	CT-45-1	-
253x226_FGT	Frost Guard Latching Threshold, 1/2 x 5 1/8	516SN	8435S	S498	DS177X5TB_T	525	-	-
253x3_FG	Frost Guard Saddle Threshold, 1/2 x 6 1/8	422S	8426	S473	DS601TB*	626	CT-46	-
253x4_FG	Frost Guard Saddle Threshold, 1/2 x 7 1/8	424S	8427	S475	DS701TB	-	-	-
254_	Half Saddle Threshold, 1/2 x 4	432S	327	S284	DS444*	1374*	CT-804	-
2548A	Saddle Threshold, 1/2 x 8	426SMIL	428E* / 428FC*	-	DS800*	-	CT-32	-
254x226_FGV	Frost Guard Latching Threshold, 1/2 x 6 1/8	517SV	8436*	S474	-	-	-	-
254x4_FG	Frost Guard Saddle Threshold, 1/2 x 8 1/8	424S	8428	S478	DS801TB*	-	-	-
255x5_FG	Frost Guard Saddle Threshold, 1/2 x 10 1/8	452S	8430	S481	-	-	-	-
270_	Saddle Threshold, 1/4 x 4	403S	413*	S404	DS4000	544	CT-64	-
271_	Saddle Threshold, 1/4 x 5	413S	513*	S405	DS5000*	545	CT-65	-
272_	Saddle Threshold, 1/4 x 6	417S	613	S406	DS6000	546	CT-66	-
2727A	Transition/Offset Threshold, 1/4* offset x 7	-	659	S714A	-	103A	-	-
273_	Half Saddle, 1/4 x 3	-	315	S814	DS3333*	1545*	-	-
274_	Half Saddle, 1/4 x 4	-	415	S439	DS4444*	239	CT-704	-
2748_	Saddle Threshold, 1/4 x 8	428S	813*	S408	DS8000	548	-	-
276_	Saddle Threshold, 1/4 x 7	430S	713*	S407	DS6666*	547	-	-
2815_M	Magnetic Gasketing	859S*	157M*	574	-	370*	W27	-
285_R	Perimeter Gasketing	861SN*	108N	39	DS341*	1370* / 270* / 272	W47	-
2891_NB	Perimeter Gasketing for Door Closer Mount	-	701EP	-	-	-	-	-
2891_S	Perimeter Gasketing for Door Closer Mount	-	9700*	-	-	-	-	-
290_S	Companion Gasketing for Door Closer Mount	880S	700E*	655*	-	-	W205	-
29310_P	Perimeter Gasketing, Concealed Fasteners	885S	170P* / 675	129_P	DS113P	-	W32	-
29326_NB	Concealed Fastener Brush Gasketing	882SB	673	-	DS158	-	-	-
296_R	Perimeter Gasketing	880SN*	132N*	49	DS338	-	W16N*	-
297_V	Perimeter Gasketing	896SV	156V	DS75	-	-	-	-
303_PK	Perimeter Gasketing	891SN	-	815	DS103_T	8303A*	W17N*	-
303_S	Perimeter Gasketing	-	155S*	678*	-	8303A*	-	-
305_N	Perimeter Gasketing	872SN	115N* / 127N	103* / DS70	DS142_N*	50	W-5	-
307_V / 308_V	Face-Mount Door Sweep	-	100V*	M15A*	DS140*	3194AA*	W-4	-
315_N	Perimeter Gasketing/Door Sweep	750SN* / 875S*	200N* / 130N*	323*	DS138_N*	139* / 329	W11*	-

Disclaimer: This is a comparison for like product. This is not a legal or binding document. Consult manufacturer's catalogs for additional information. Copyright © 2015-2017, ASSA ABLOY Door Security Solutions, an ASSA ABLOY Group company. All rights reserved. Reproduction in whole or in part without the express written permission of ASSA ABLOY Door Security Solutions is prohibited.

## Pemko Thresholds and Gasketing (Continued)

Pemko Part No.	Description	Hager	NGP	Reese	Draftseal	Zero	KN Crowder	DHSI
3151_N	Face-Mount Door Sweep	753SN	–	701	DS138_N-2	339WA*	–	–
3155SN	Face-Mount Door Sweep	750S	130NSS*	373SS	DS2385SN	–	–	–
318AV	Face-Mount Under Door Seal	–	14RA	64A	–	511A*	–	–
319_N	Perimeter Gasketing	862N*	130S*	403* / 770	DS133*	326*	W50*	–
321_N	Face-Mount Door Sweep	754SN	198N*	377*	DS136*	339A	–	–
332CR	Perimeter Gasketing	–	110NA	DS69C	–	312A	W12	–
345_	Rain Drip	770S	17	–	DS164*	11	–	–
345_V	Rain Drip and Sweep	770SV	101V	–	DS162_V	8197*	–	–
346C	Frame Rain Drip (Overhead)	810SMIL*	16A	–	DS166	142A	W-3	–
350CSR	Adjustable Perimeter Gasket	865SNMIL*	103NA*	–	DS340	170AA	W45	–
355_P	T-Astragal	837S*	158 / 178*	275*	DS180	41*	W9	–
357_	Security Astragal	835S	139	183	DS186	44* / 905*	W8-2	–
369_P	Mortise Meeting Stile	838S*	136P	86P	DS369*	36A*	W88	–
375_R	Perimeter Gasketing	871SN* / 874*	122N*	93C / 76* / 79*	DS131*	140* / 322*	W15 / W-6	–
379_R	Adjustable Perimeter Gasket	860SN*	106N* / 141*	33C* / 633*	DS339	–	W42	–
411ANBL	Mortise Auto Door Bottom with Brush	730SNMIL	225WH	–	DS336AN*	320AA	–	–
4131_NBL	Surface Auto Door Bottom with Brush	–	222WH	–	–	–	–	–
4131_RL	Surface Auto Door Bottom	740S*	222N*	–	DS335N*	–	CT-50	–
4301_RL	Surface Auto Door Bottom	747SN	420N	–	DS343N*	361* / 351*	CT-52	–
434ARL	Mortise Auto Door Bottom	743SNMIL	422N*	–	DS342AN*	360A*	CT-53	–
45100CNB	45° Brush Seal	803SBMIL*	603A* / 620*	–	DS159	–	W26	–
90100CNB	90° Brush Sweep	–	D648	984C	–	–	W37-1	–
ACP112_	Polypropylene Corner Pad / Dust Plug	–	–	–	DS672	–	–	#DP DUST PLUG
PDL_	Privacy Door Latch-Flip Latch	–	–	–	–	–	–	#SAL
PK33_	Adhesive Smoke Seal, Adhesive Backed	7365*	2525C	638CH	–	488S	–	–
S44_	Adhesive Smoke Seal, Adhesive Backed	728	5040	796	–	117S	–	–
S772	Double Fin Adhesive Astragal-Meeting Stile	–	5070	–	–	–	–	#SA
S773	Acoustic Smoke Seal, Adhesive Backed	–	5075	–	DSS99	8150S	–	105 Cush N Seal
S88	Adhesive Smoke Seal, Adhesive Backed	726	5050	–	DSS66	188S	W22	–
355_S	T-Astragal	837SS*	158S / 178S*	275*	DS180T	–	–	–
357_	Security Astragal	835S	139	183	DS186	44* / 905*	W8-2	–

\* competitor's products are similar in function, but may vary slightly in dimensions

Disclaimer: This is a comparison for like product. This is not a legal or binding document. Consult manufacturer's catalogs for additional information. Copyright © 2015-2017, ASSA ABLOY Door Security Solutions, an ASSA ABLOY Group company. All rights reserved. Reproduction in whole or in part without the express written permission of ASSA ABLOY Door Security Solutions is prohibited.

Many more products and options are available. For information call Pemko Products 1-800-824-3018 or visit [www.pemko.com](http://www.pemko.com)



## Rockwood Door Pulls and Accessories

Rockwood Part No.	Description	Burns	Donjo	Hager	Hiawatha	Ives	Trimco
47	Push Bar	422	147	130S	1081 LPB	9100	1741
90	Combination Plate	100	1874	121L	D251	–	1821
91	Combination Plate	89	–	120L	1456	–	1820
94	Flush Pull	459	1848	15N	1459	–	1115
106	Door Pull	25A	15	3E	523E	8102-6	1194-1
107	Door Pull	25B	16	3G	523A	8102-8	1194-2
110	Door Pull	26B	19	4G	535B	8103-8	1195-1
111	Door Pull	26C	20	4J	536B	8103-0	1195-2
112	Door Pull	26D	21	4L	537B	8103-2	1195-3
122	Door Pull	20A	30	2E	559A	8105-6	1139-1
123	Door Pull	20B	31	2G	559	8105-8	1139-2
130	Door Pull	14	36	7N	–	8113-5	1102T
131	Door Pull	16	35	8N	–	8112-5	1102S
132	Door Pull	–	10	6N	5 1/2 P	8111	1117-1
137	Door Pull	12	–	5N	5 Series	8114-5	1109-1
193	Door Pull	19	44	19N	1458A	8121	1134
290	Corner Guard	–	1290	185G	–	–	–
295	Corner Guard	–	1295	185G	–	–	–
308	Door Edge	306	–	181H	DE-1AJ	7308	KE35-1
309	Door Edge	307	–	181K	DE-2AJ	7309	KE36-1
310	Door Edge	308	–	181M	DE-3CJ	7310	KE37-1
311	Door Edge	309	–	181Q	DE-4CJ	7311	KE38-1
400	Wall Stop	560	1412	230W	–	WS402CVX	1270CXCP
403	Wall Stop	565	1413	234W	–	WS402CCV	1270CVCP
406	Wall Stop	570	1406	232W	–	WS407CVX	W1276CS
409	Wall Stop	575	1407	236W	–	WS406CCV	W1276CCS
441	Dome Stop	510	1440	241F	–	FS438	1210
442	Dome Stop	520	1442	243F	–	FS438	1212
443	Dome Stop	520	1443	243F	–	FB17	1212
449	Dome Stop Riser	525	1446	246B	–	R435	1210AR
455	Straight Roller Stop	632	1488	273W	–	RS470	1245

More products and custom options are available. For information call Rockwood Products 1-800-458-2424 or visit [www.rockwoodmfg.com](http://www.rockwoodmfg.com).

Disclaimer: This is a comparison for like product. This is not a legal or binding document. Consult manufacturer's catalogs for additional information. Copyright © 2015-2017, ASSA ABLOY Door Security Solutions, an ASSA ABLOY Group company. All rights reserved. Reproduction in whole or in part without the express written permission of ASSA ABLOY Door Security Solutions is prohibited.

## Rockwood Door Pulls and Accessories (Continued)

Rockwood Part No.	Description	Burns	Donjo	Hager	Hiawatha	Ives	Trimco
456	Straight Roller Stop	630	1486	272W	–	RB471	1244
467	Floor Mount Door Stop	–	–	–	–	FS18L	–
470	Floor Mount Door Stop	535	–	267S	–	FS448	1201
471	Floor Mount Door Stop	535	1471	267F	–	FS444	1201
473	Floor Mount Door Stop	536	1473	268F	–	FS446	1224-5
475	Floor Mount Door Stop	530	1475	255W	–	WS11X	1205
476	Floor Mount Door Stop	531	–	256W	–	WS449	1207
477	Floor Mount Door Stop	531	1477	256W	–	WS445	1207
485	Floor Mount Door Stop	529	1453	258F	–	FS451	1234
490	Floor Mount Door Stop	533	1514	326W	–	WS40	1254
491	Floor Mount Door Stop	534	1520	326F	–	FS40	1261
505	Door Stop	–	1501	325W	–	61	1235
528	Heavy Duty Hinge Pin Stop	578	1502	BL6212	–	69	–
555	Manual Flush Bolt	590	1555	282D	1520	FB458	3917
557	Wood Door Flush Bolt	591	1557	283D	–	FB358	3913
570	Dust Proof Strike	545	1570	280X	382	DP1	3910
576	Coordinator	7500	2080	298D	–	COR7G	3093
580	Surface Bolt	598	1580	275D	–	SB453-8	3922
590	Roller Latch	550	1700	1442	–	RL30	1559A
591	Roller Latch	550 X SP2	1702	1443	–	RL30A	1559C
593	Roller Latch	555	–	318S	–	RL1152	1559BL
608	Door Silencer	500	1608	307D	–	SR64	1229A
622	Door Viewer	852	ULDV-180	1756	–	698	976
640	Surface Bolt	592	1640	1413	–	261	3999SE
802	Coat Hook	600	300	–	–	571	3070-1
890	Sliding Door Pull	–	PDL-100	330D	–	990	1064
891	Privacy Latch	–	PDL-101	330L	–	991	1065
2672	Door Coordinator	7672	2021	297D	–	COR52	3094B2
2842	Auto Flush Bolt	7842	1560	292D	–	FB31P	3810X3810
2942	Auto Flush Bolt	7942	1562	291D	–	FB41P	3815X3815
11147	Push Bar & Straight Pull Set	422 X 26C	20147	153D	–	9103-0	1731

## Rockwood Door Pulls and Accessories (Continued)

Rockwood Part No.	Description	Burns	Donjo	Hager	Hiawatha	Ives	Trimco
106 X 70B	Pull Plate	5325A	7015	33E	–	8302-6	1017-2
107 X 70C	Pull Plate	5425B	7116	33G	–	8302-8	1017-3B
110 x 70C	Pull Plate	5426B	–	34G	–	8303-8	1018-3
111 X 70C	Pull Plate	5426C	–	34J	–	8303-0	1018-3B
132 X 70B	Pull Plate	5310	7010	36N	–	8311-5	1010-2
441H	High Dome Stop	521	1447	242F	–	FS439	1211
461L	Kick Down Door Stop	585	1487	271D	–	FS452-5	1220-5
630-4	Dutch Door Bolt	–	1630	279D	–	54	3920-4
70B	Push Plate	53	70	30S	200D	8200	1001-2
70E	Push Plate	56	72	30S	200H	8200	1001-9
70F	Push Plate	57	73	30S	200K	8200	1001-11
73C	Push Plate	74	78	80S	300F	–	1809-4
BF150	Offset Door Pull	29B	1150	11G	668	–	1191-1
BF156	Offset Door Pull	–	1156	12G	658	8190-8	–
BF157	Offset Door Pull	–	1157	12J	658A	8190-0	1191-3
BF15747	Push Bar & Offset Pull Set	422 X 39C	1157147	159D	–	9190-0	1737
BF158	Offset Door Pull	39D	1158	12L	658B	8190-2	1191-4
DF86	Door Edge Filler Plate	–	EF-86	336B	–	–	–
DFF4	Frame Hinge Filler Plate	–	HF-45	336L	–	–	–
DHF4B	Beveled Door Hinge Filler Plate	–	SHF-45	336F	–	–	–
K1038	Kick Plate .038	–	–	198S	–	–	KA038
K1050	Kick Plate .050	–	–	190S	–	8400	KA050
RM201	Door Pull	M39D	–	–	HG121	M39D	1191-4J
RM202	Door Pull	–	–	23Q	HG122	–	1191-5J
RM301	Door Pull	M26D	–	10L	HG111	M26D	1195-3J
RM302	Door Pull	–	–	10Q	HG112	–	1195-6J
TYPE 1	Mounting Hardware	1	1	TYPE1	–	TYPE STD	E
TYPE 5	Mounting Hardware	5	3	TYPE3	–	TYPE N	G
TYPE 6	Mounting Hardware	6	6	TYPE5	–	TYPE L	J
VRT24	Vandal Resistant Trim	–	–	–	–	VR900	1096HA
VRT26	Vandal Resistant Trim	–	–	–	–	VR900LLP	1097HA

More products and custom options are available. For information call Rockwood Products 1-800-458-2424 or visit [www.rockwoodmfg.com](http://www.rockwoodmfg.com).

Disclaimer: This is a comparison for like product. This is not a legal or binding document. Consult manufacturer's catalogs for additional information. Copyright © 2015-2017, ASSA ABLOY Door Security Solutions, an ASSA ABLOY Group company. All rights reserved. Reproduction in whole or in part without the express written permission of ASSA ABLOY Door Security Solutions is prohibited.

ASSA ABLOY is the global leader in door opening solutions, dedicated to satisfying end-user needs for security, safety and convenience

**ASSA ABLOY**

*Disclaimer: This is a comparison for like product. This is not a legal or binding document. Consult manufacturer's catalogs for additional information.*

Markar Products  
800-824-3018  
[www.markar.com](http://www.markar.com)

McKinney Products  
800-346-7707  
[www.mckinneyhinge.com](http://www.mckinneyhinge.com)

Pemko Products  
800-824-3018  
[www.pemko.com](http://www.pemko.com)

Rockwood Products  
800-458-2424  
[www.rockwoodmfg.com](http://www.rockwoodmfg.com)

ASSA ABLOY Door Security Solutions  
110 Sargent Drive  
New Haven, CT 06511  
[www.assaabloydss.com](http://www.assaabloydss.com)  
1.800.DSS.EZ4U (377.3948)

Copyright © 2015-2017, ASSA ABLOY Door Security Solutions, an ASSA ABLOY Group company. All rights reserved. Reproduction in whole or in part without the express written permission of ASSA ABLOY Door Security Solutions is prohibited.

Effective 3/2017  
2500-2579