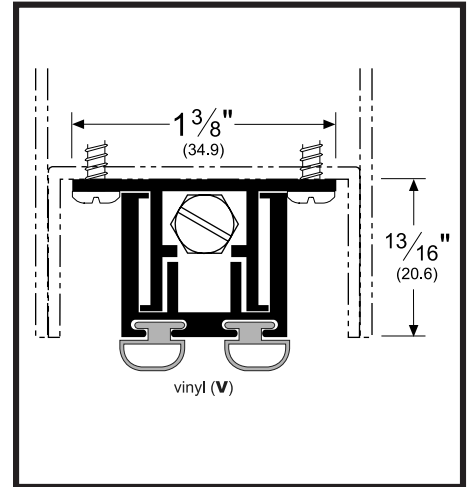


DOOR BOTTOM
Automatic, Non-Handed, Reversible



About Door Bottom Seals:

Pemko Door Bottom Seals consist of a variety of solutions for sealing a door to the threshold or floor surface.

About Automatic Door Bottoms:

Pemko automatic door bottoms consist of an aluminum case which surrounds a movable drop bar seal. The drop bar seal is actuated by a plunger which contacts the jamb as the door is closing, forcing the drop bar seal down against the floor or threshold.

- Low closing force.
- Provide excellent seals to keep out draft, dust, moisture, insects, fumes, light and sound.
- End plates provided for all mounting applications.
- Slotted holes for adjustment.



↑
Seals
Bottom
of Door

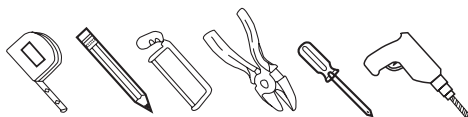
Product / Available Finishes:

420AVL Mill Finish Aluminum with Black PemkoPrene™ insert

Testing/Ratings:



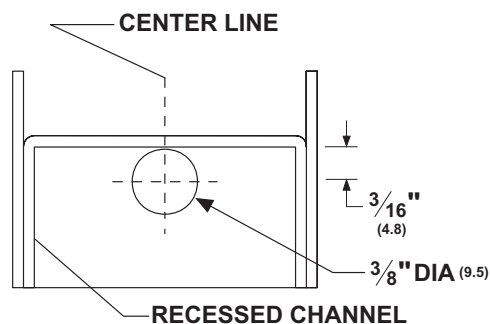
Tools Required:



Installation Instructions:

1. Cut mortise in bottom of door if needed. Hollow metal doors may already have an inverted channel. If this is the case, ensure dimensions are compatible.

NOTE: If a door is fire labeled or of special construction, mortise preparation must be done by the door manufacturer.



HOLE LOCATION FOR No. 420 DRILL THROUGH HINGE EDGE

NOTE: The 420 requires a 3/8" diameter hole drilled through the hinge edge of the hollow metal door at the location shown below.

2. Cut the ADB to door width (without cutting the gasketing insert).

NOTE: Make sure that the drop bar is flush with the case on the plunger side and the gasketing insert projects at least 1/8".

WARNING: ADB less than 24" CAN ONLY be cut down by 1/2".

WARNING: ADB 26" and over should NOT be cut down more than 2".

WARNING: ADB should ONLY be cut from non-plunger side.

3. Adjust and trim the gasketing insert so that it projects at least 1/16" at each end of the drop bar and case.
4. With door removed from opening, install the door bottom with plunger at the hinge side.
NOTE: The underside edge of ADB should be flush with bottom of door.
5. Fasten with screws provided.
6. Install door in opening.
7. On wooden jambs, install the No. 10 x 1/2" flat head screw at the point where the plunger contacts the jamb to prevent indenting.
8. Screw the actuating plunger in or out as required until the gasketing just touches the sealing surface when the door is closed.

NOTE: Adjustment range is 1/8" min - 1/2" max

NOTE: Start with the plunger screwed in completely to avoid over adjustment or damage.

WARNING: Do not over adjust the plunger. It is only necessary to lightly compress the insert gaskets against the sealing surface to provide proper sealing. Over adjustment can cause internal component failure voiding the warranty!

WARNING: Do NOT use power tools to adjust the ADB!

9. Further adjustments may be required for uneven surfaces.



ASSA ABLOY

ASSA ABLOY, the global leader
in door opening solutions

UNITED STATES:

MEMPHIS, TN
Ph: 800.824.3018
Fax: 800.243.3656

VENTURA, CA
Ph: 800.283.9988
Fax: 800.283.4050

www.pemko.com

CANADA:

VANCOUVER, BC
Ph: 877.535.7888
Fax: 877.535.7444

TORONTO, ON
Ph: 877.535.7888
Fax: 877.535.7444

© 2014 Pemko Manufacturing Co.
420_VL_WEBINS
Rev 4 - 05.28.14