

ASTRAGALS AND MEETING STILES

3493,3494,3495,3496,3497,3498

INSWING ASTRAGAL PUNCHING

PART NO.

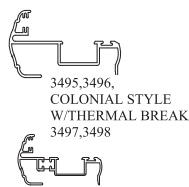
CUSTOMER

PEMKO ORDER NO.

CUSTOMER P.O. NO.

DATE

LEFT HAND

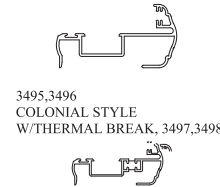


CHECK HAND

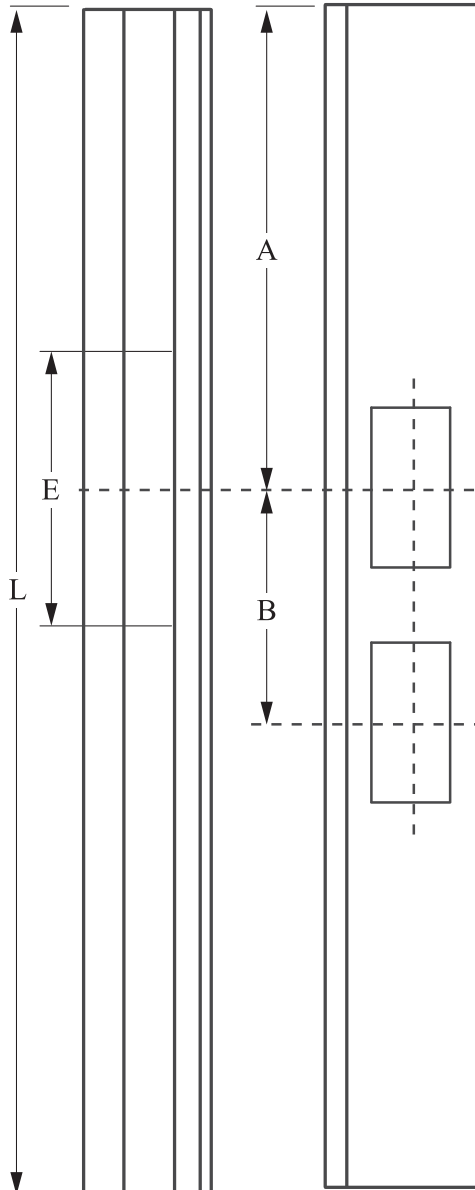
LH RH



RIGHT HAND



TOP



DIM. "A", TOP TO CENTERLINE OF DEADBOLT FACE CUTOUT

A

DIM. "B", CENTER TO CENTER BETWEEN DEADBOLT AND LATCHBOLT FACE

B

NOTE: DEADBOLT AND LATCHBOLT FACE CUTOUTS ARE 3/4" WIDE x 2" HIGH THE WIDTH IS CONSTANT, BUT THE HEIGHT CAN BE GREATER IF REQUIRED,

SPECIFY DIM. "C" AND/OR DIM. "D"

C

D

OR ONE CONTINUOUS PUNCHOUT CAN BE USED TO COVER BOTH BOLTS (USE DIM. "C" BOX)

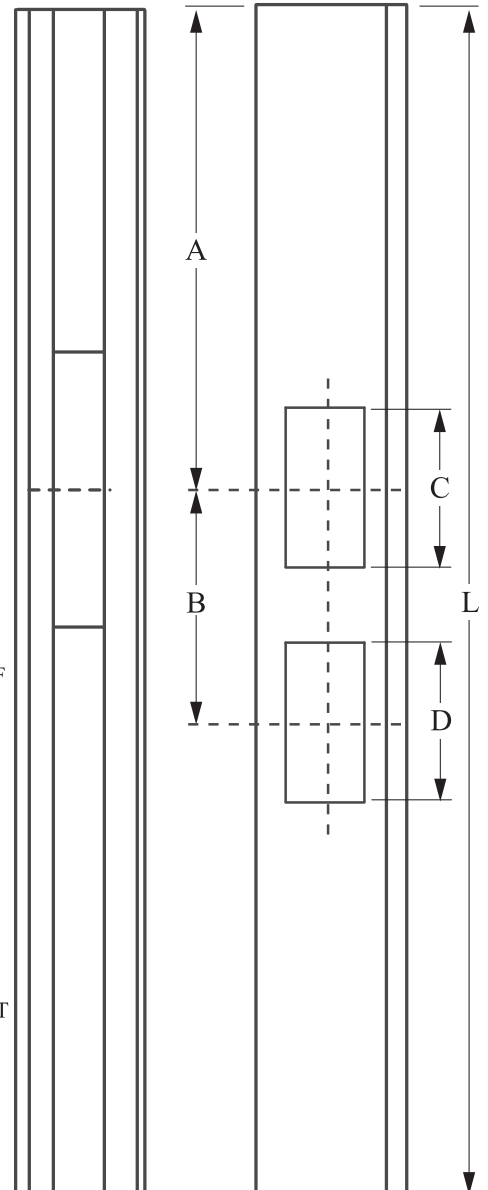
LENGTH "L" IN INCHES

L

NOTE: IF CUTOUT "E" IS NOT REQUIRED WRITE "NONE" IN THE BOX

NON-RETURNABLE

APPROVED BY:
DATE:



NOTE: IF ONLY ONE LATCH FACE CUTOUT IS REQUIRED, WRITE "0" IN BOX "B" AND "NONE" IN BOX "D".

ASTRAGALS AND MEETING STILES

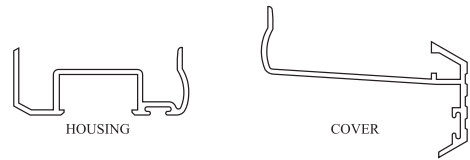
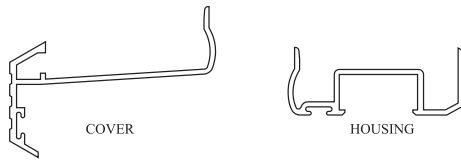
3441,3442,3443,3444,3445,3446,3447,3448

OUTSWING ASTRAGAL PUNCHING

PART NO.		CUSTOMER	
PEMKO ORDER NO.		CUSTOMER P.O. NO.	DATE

LEFT HAND REVERSE

RIGHT HAND REVERSE



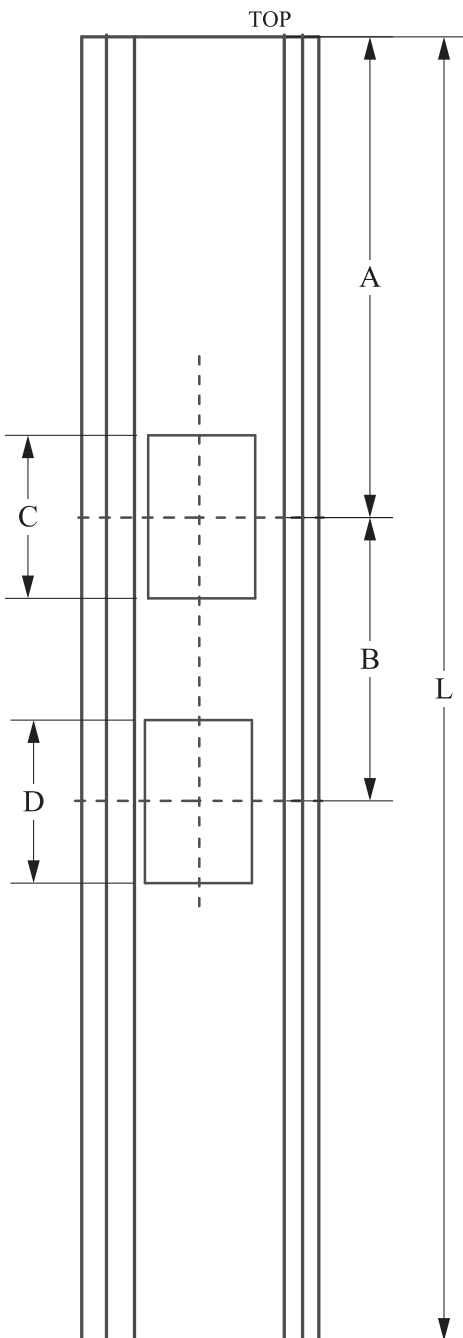
EA

QUANTITY

CHECK HAND

LHR

RHR



DIM. "A", TOP TO CENTERLINE OF DEADBOLT FACE CUTOUT

A

DIM. "B", CENTER TO CENTER BETWEEN DEADBOLT AND LATCHBOLT FACE CUTOUTS

B

NOTE: DEADBOLT AND LATCHBOLT FACE CUTOUTS ARE 1-1/8" WIDE x 2-1/4" HIGH THE WIDTH IS CONSTANT, BUT THE HEIGHT CAN BE GREATER IF REQUIRED.

SPECIFY DIM. "C" AND/OR DIM. "D"

C

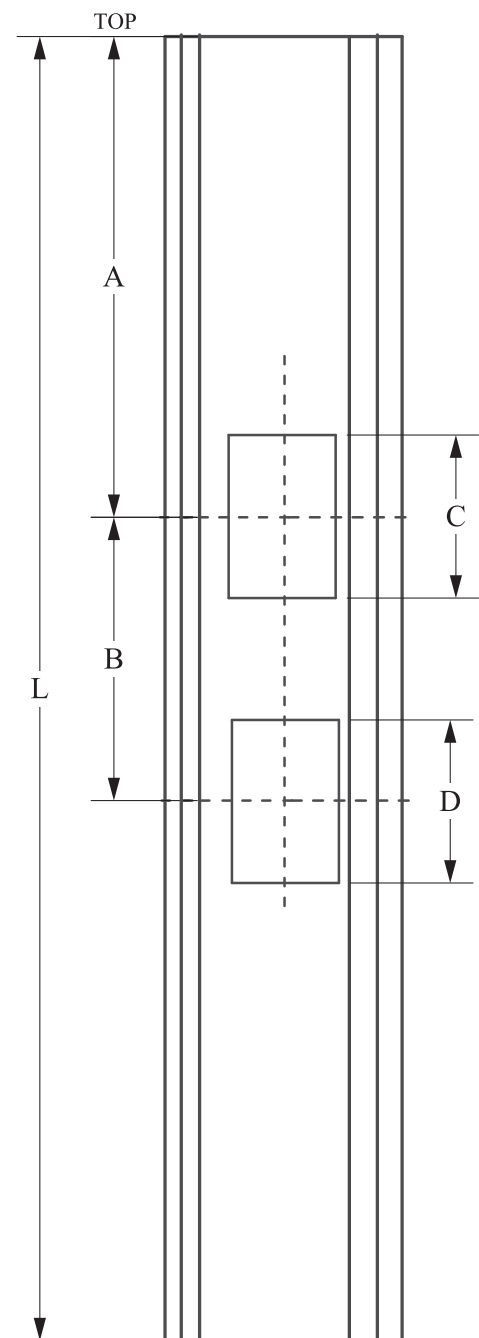
D

LENGTH "L" IN INCHES

L

CUTOUT "E" IS 3/4" X 4" SPECIFY IF CUTOUT LONGER THAN 4" IS REQUIRED

E



FORM: CUST. AP-03 Rev. 3, 10-29-02

PRINTED COPIES OF THIS DOCUMENT ARE UNCONTROLLED