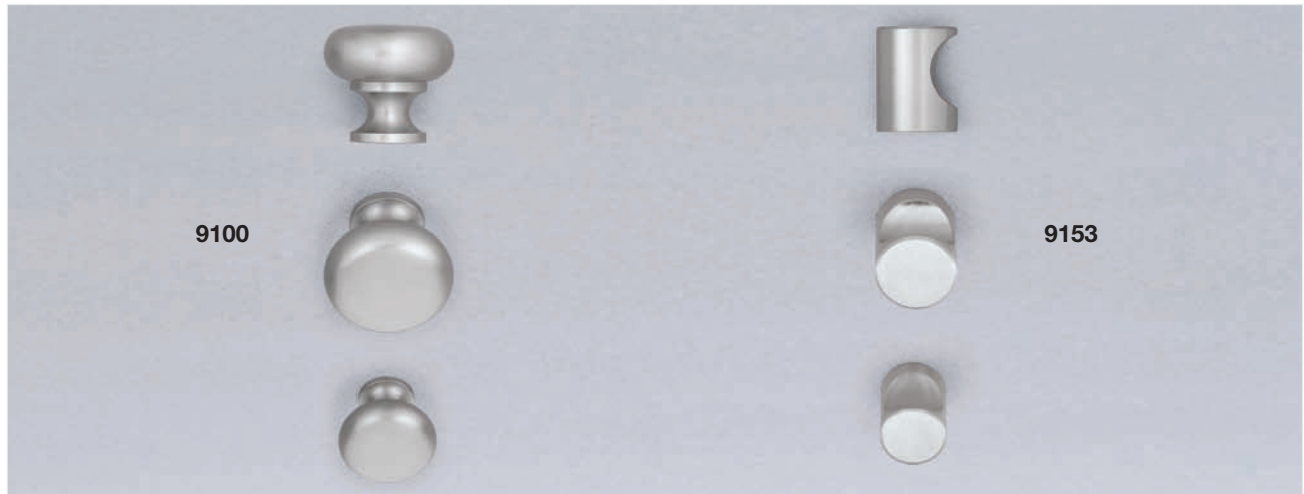


OMNIA

STAINLESS STEEL
CABINET HARDWARE & DOOR PULLS



STAINLESS STEEL



9100

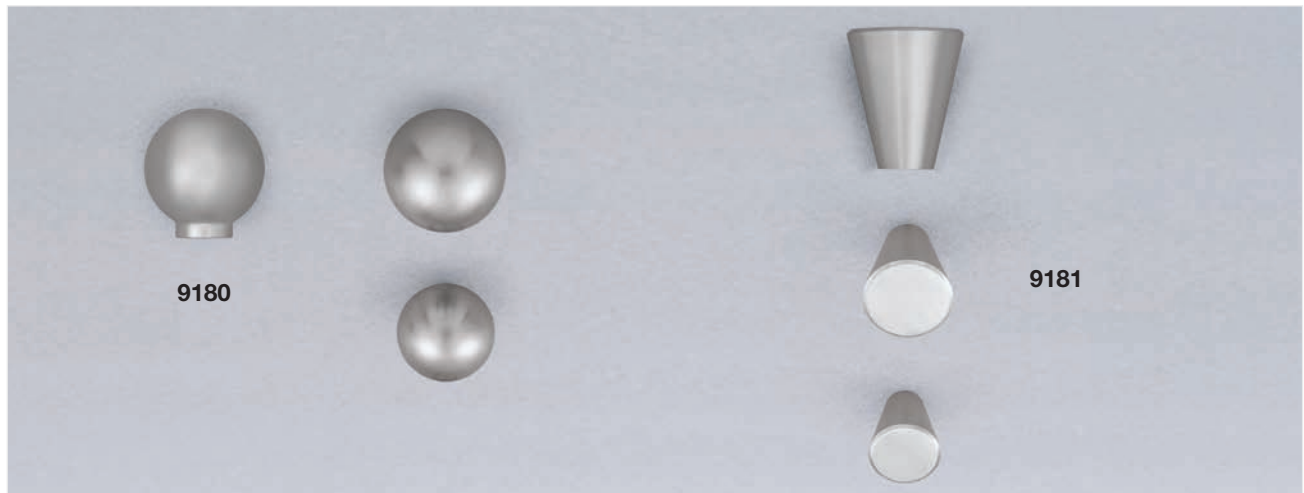
9153

9100 - US32D

1" (25 mm) dia. 7/8" proj.
 1 3/16" (30 mm) dia. 1 1/8" proj.

9153 - US32D

3/4" (18 mm) dia. 1" proj.
 1 3/16" (21 mm) dia. 1 1/8" proj.



9180

9181

9180 - US32D

1" (25 mm) dia. 1 1/8" proj.
 1 3/16" (30 mm) dia. 1 1/4" proj.

9181 - US32D

3/4" (20 mm) dia. 1" proj.
 1 5/16" (24 mm) dia. 1 3/16" proj.

STAINLESS STEEL



9449

9449 - US32D
10 mm dia.

3 ³ / ₄ " (96 mm) cc.	1 ¹ / ₈ " proj.	4 ⁵ / ₈ " oa.
5" (128 mm) cc.	1 ³ / ₁₆ " proj.	5 ⁷ / ₈ " oa.
7 ⁵ / ₈ " (192 mm) cc.	1 ³ / ₈ " proj.	8 ³ / ₄ " oa.
12 ⁵ / ₈ " (320 mm) cc.	1 ³ / ₈ " proj.	14 ⁹ / ₁₆ " oa.



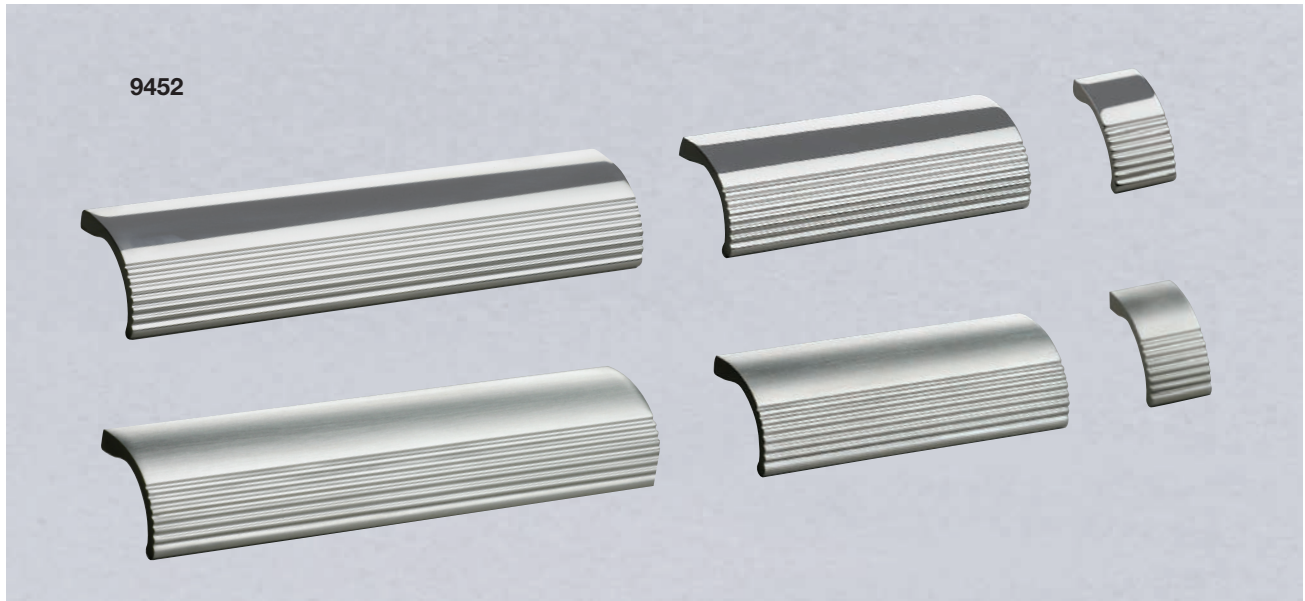
9450

9450 - US32D
10 mm dia.

3 ³ / ₄ " (96 mm) cc.	1 ¹ / ₈ " proj.	4 ⁵ / ₈ " oa.
5" (128 mm) cc.	1 ³ / ₁₆ " proj.	5 ⁷ / ₈ " oa.
7 ⁵ / ₈ " (192 mm) cc.	1 ³ / ₈ " proj.	8 ³ / ₄ " oa.
12 ⁵ / ₈ " (320 mm) cc.	1 ³ / ₈ " proj.	14 ⁹ / ₁₆ " oa.



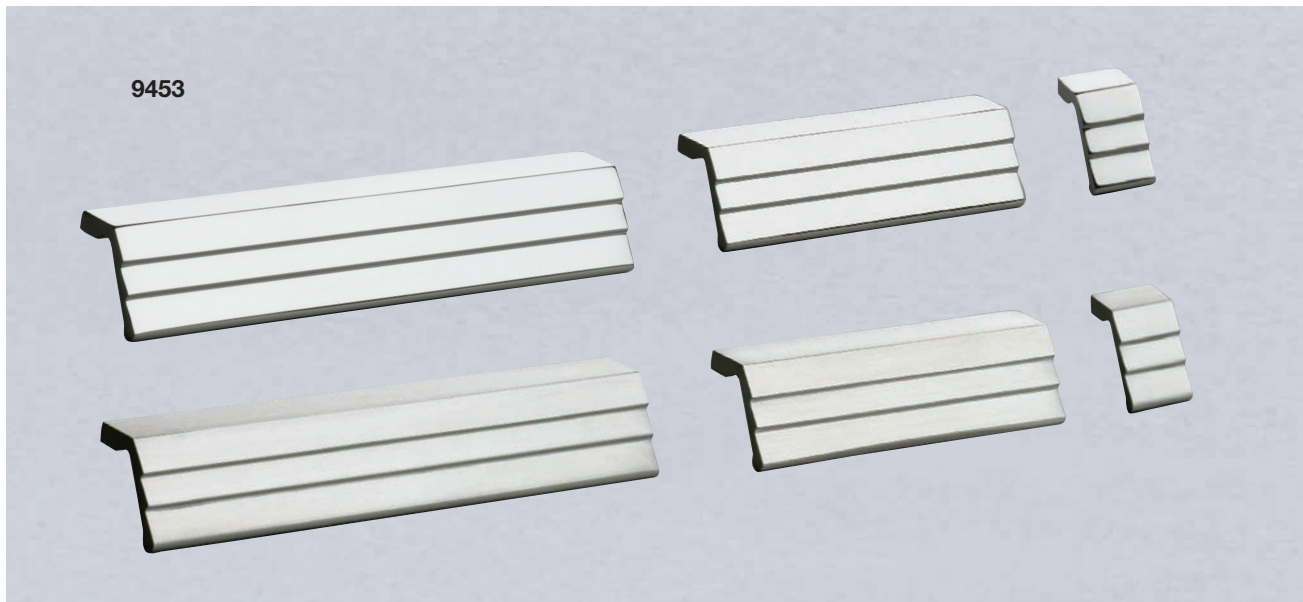
STAINLESS STEEL



9452

9452 - US32 • US32D

Single hole mount	1 1/8" proj.	13/16" oa.
3 1/2" (89 mm) cc.	1 1/8" proj.	4 5/8" oa.
6" (152 mm) cc.	1 1/8" proj.	7 1/8" oa.



9453

9453 - US32 • US32D

Single hole mount	1 1/8" proj.	13/16" oa.
3 1/2" (89 mm) cc.	1 1/8" proj.	4 5/8" oa.
6" (152 mm) cc.	1 1/8" proj.	7 1/8" oa.

FINISH OPTIONS

US32. Polished Stainless Steel
 US32D Satin Stainless Steel

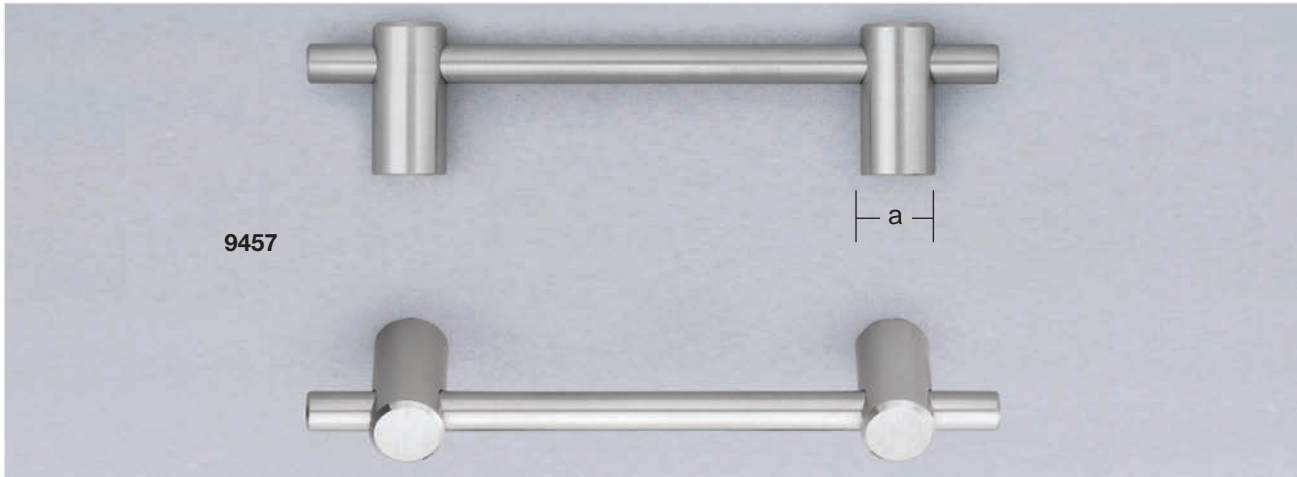


BOX 330 ■ CEDAR GROVE, NJ 07009 973-239-7272 ■ FAX: 973-239-5960

www.OmniaIndustries.com



STAINLESS STEEL



9457

9457 - US32D
8 mm dia.

a = $\frac{5}{8}$ " dia.

3 $\frac{3}{4}$ " (96 mm) cc.	1" proj.	5 $\frac{3}{8}$ " oa.
5" (128 mm) cc.	1" proj.	6 $\frac{5}{8}$ " oa.
6 $\frac{3}{8}$ " (160 mm) cc.	1" proj.	7 $\frac{7}{8}$ " oa.
7 $\frac{5}{8}$ " (192 mm) cc.	1" proj.	9 $\frac{1}{8}$ " oa.

(The above center-to-centers are adjustable)



9458

9458 - US32D
12 mm dia.

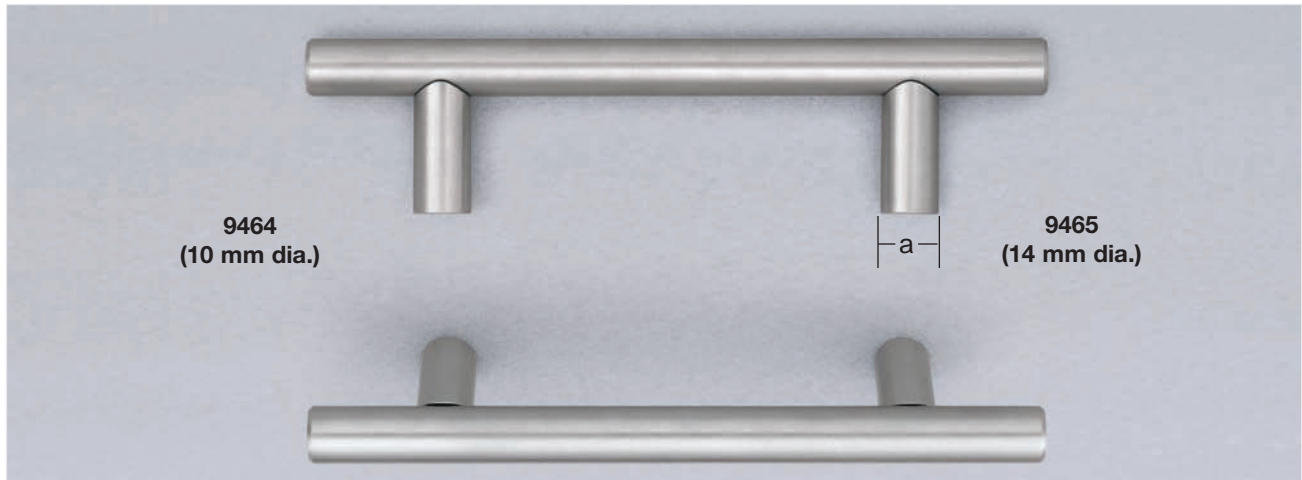
a = $\frac{5}{8}$ " dia.

5" (128 mm) cc.	1 $\frac{1}{4}$ " proj.	7 $\frac{1}{4}$ " oa.
7 $\frac{5}{8}$ " (192 mm) cc.	1 $\frac{1}{4}$ " proj.	9 $\frac{3}{4}$ " oa.
12 $\frac{5}{8}$ " (320 mm) cc.	1 $\frac{1}{4}$ " proj.	14 $\frac{15}{16}$ " oa.
17 $\frac{5}{8}$ " (448 mm) cc.	1 $\frac{1}{4}$ " proj.	20 $\frac{1}{8}$ " oa.

(The above center-to-centers are adjustable)



STAINLESS STEEL



9464
(10 mm dia.)

9465
(14 mm dia.)

9464 - US32D
10 mm dia.

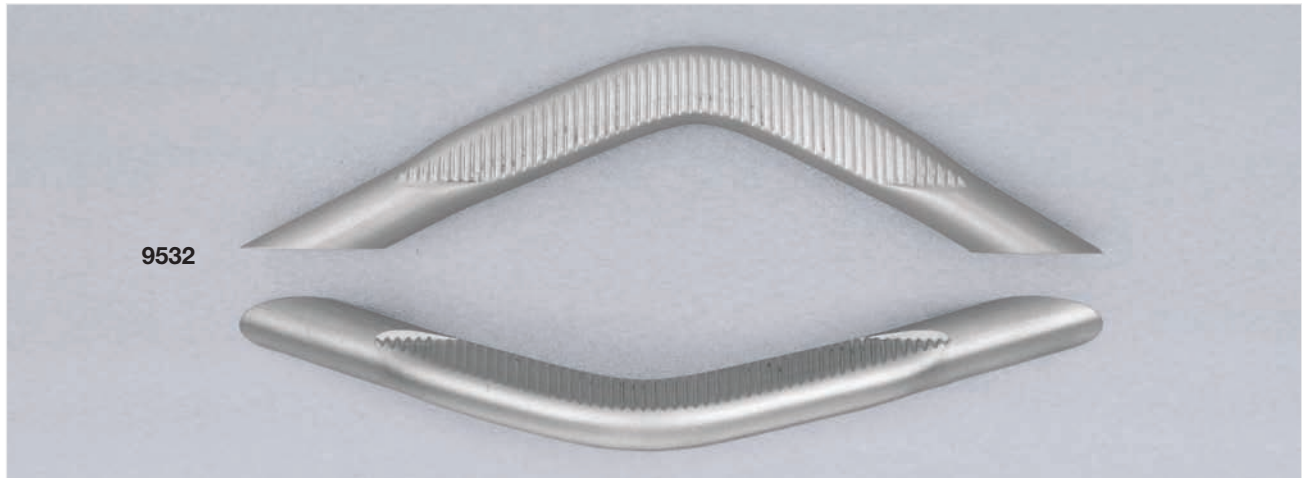
$a = \frac{5}{16}$ " dia.

9465 - US32D
14 mm dia.

$a = \frac{1}{2}$ " dia.

3" (76 mm) cc.	$1\frac{3}{16}$ " proj.	$4\frac{15}{16}$ " oa.
$3\frac{3}{4}$ " (96 mm) cc.	$1\frac{3}{16}$ " proj.	$5\frac{3}{4}$ " oa.
5" (128 mm) cc.	$1\frac{3}{16}$ " proj.	7" oa.
$7\frac{5}{8}$ " (192 mm) cc.	$1\frac{3}{16}$ " proj.	$9\frac{1}{2}$ " oa.
$12\frac{5}{8}$ " (320 mm) cc.	$1\frac{3}{16}$ " proj.	$14\frac{9}{16}$ " oa.
$17\frac{5}{8}$ " (448 mm) cc.	$1\frac{3}{16}$ " proj.	$20\frac{1}{2}$ " oa.
$25\frac{3}{16}$ " (640 mm) cc.	$1\frac{3}{16}$ " proj.	$28\frac{3}{8}$ " oa.

$3\frac{3}{4}$ " (96 mm) cc.	$1\frac{3}{8}$ " proj.	$5\frac{3}{4}$ " oa.
5" (128 mm) cc.	$1\frac{3}{8}$ " proj.	7" oa.
$7\frac{5}{8}$ " (192 mm) cc.	$1\frac{3}{8}$ " proj.	$9\frac{1}{2}$ " oa.
$12\frac{5}{8}$ " (320 mm) cc.	$1\frac{3}{8}$ " proj.	$14\frac{9}{16}$ " oa.
$17\frac{5}{8}$ " (448 mm) cc.	$1\frac{3}{8}$ " proj.	$20\frac{1}{2}$ " oa.
$25\frac{3}{16}$ " (640 mm) cc.	$1\frac{3}{8}$ " proj.	$28\frac{3}{8}$ " oa.
29" (736 mm) cc.	$1\frac{3}{8}$ " proj.	$32\frac{1}{4}$ " oa.



9532

9532 - US32D
10 mm dia.

$3\frac{3}{4}$ " (96 mm) cc.	$1\frac{3}{16}$ " proj.	$5\frac{3}{16}$ " oa.
5" (128 mm) cc.	$1\frac{1}{4}$ " proj.	$6\frac{3}{4}$ " oa.

STAINLESS STEEL



9533

9533 - US32D
10 mm dia.

2 ⁹ / ₁₆ " (64 mm) cc.	1 ¹ / ₈ " proj.	3 ⁵ / ₈ " oa.
3 ³ / ₄ " (96 mm) cc.	1 ³ / ₁₆ " proj.	5 ³ / ₁₆ " oa.
5" (128 mm) cc.	1 ¹ / ₄ " proj.	6 ³ / ₄ " oa.



9537
(8 mm dia.)

9538
(10 mm dia.)

9537 - US32D
8 mm dia.

3" (76 mm) cc.	1 ³ / ₁₆ " proj.
4" (102 mm) cc.	1 ³ / ₁₆ " proj.
5" (128 mm) cc.	1 ³ / ₁₆ " proj.

9538 - US32D
10 mm dia.

3" (76 mm) cc.	1 ³ / ₈ " proj.
4" (102 mm) cc.	1 ³ / ₈ " proj.
5" (128 mm) cc.	1 ³ / ₈ " proj.



STAINLESS STEEL



720 - US32D
30 mm dia.

$a = 13/16"$ dia.

$8\frac{5}{8}"$ (220 mm) cc.

$2\frac{3}{4}"$ proj.

15" oa.



721 - US32D
20 mm dia.

$a = 1"$ dia.

$15\frac{3}{4}"$ (400 mm) cc.

$2\frac{9}{16}"$ proj.

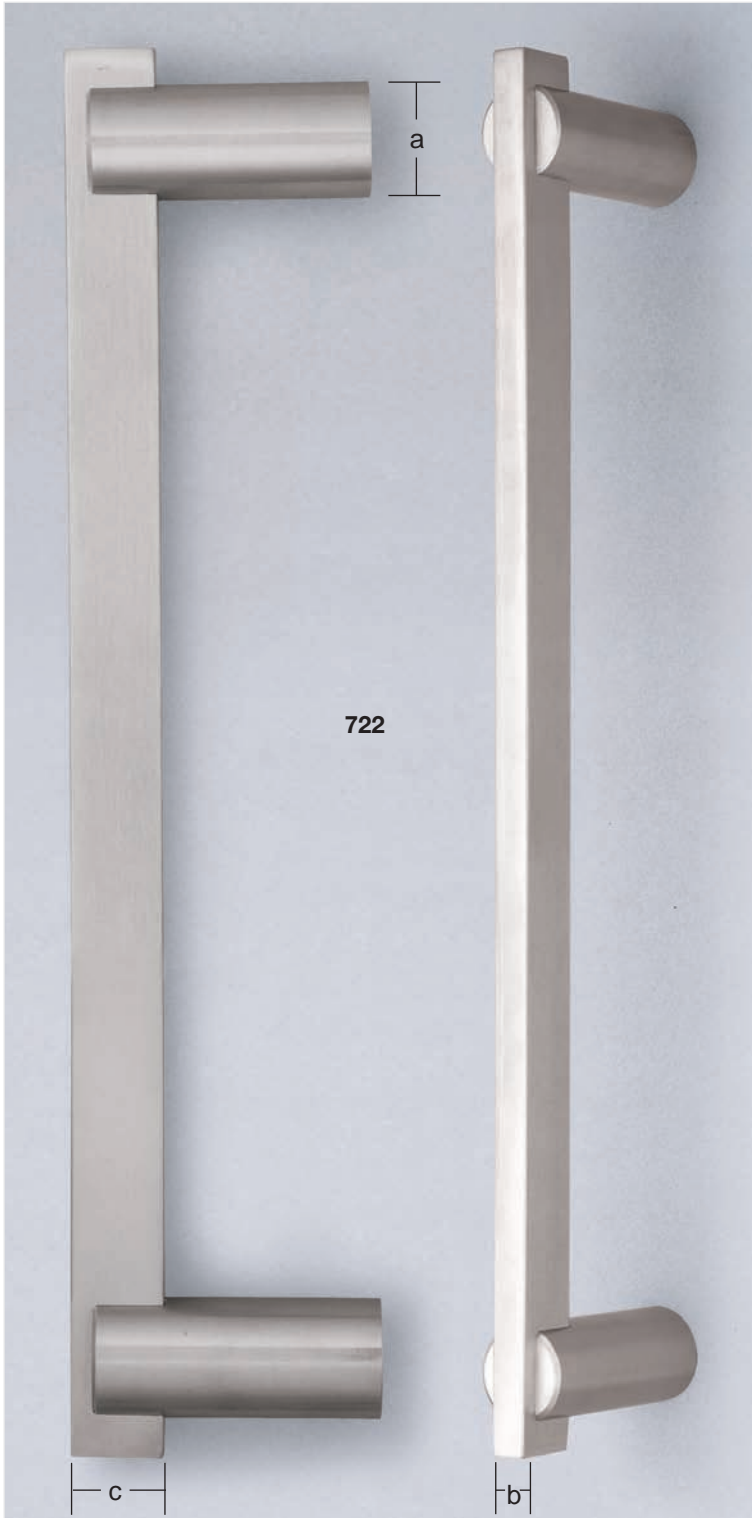
$17\frac{5}{16}"$ oa.

$31\frac{1}{2}"$ (800 mm) cc.

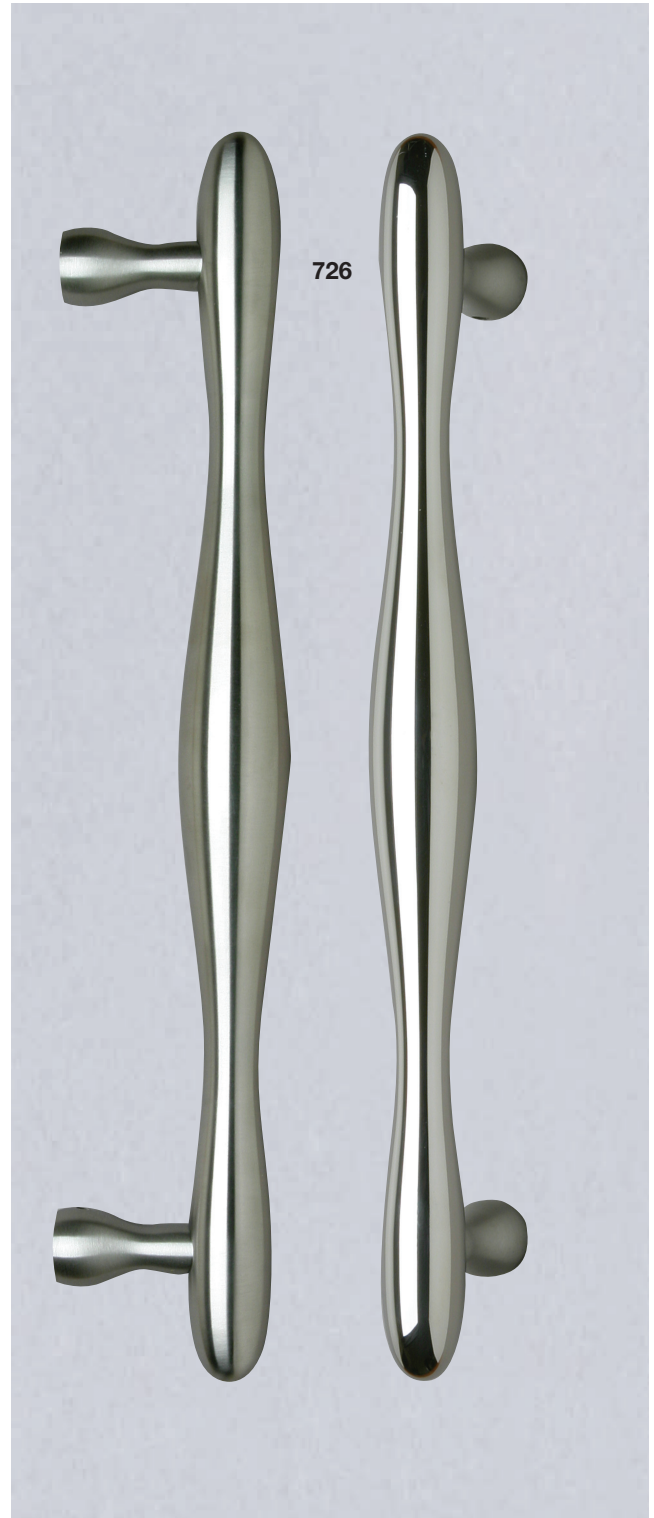
$2\frac{9}{16}"$ proj.

33" oa.

STAINLESS STEEL



722 - US32D a = 1" dia. b = $\frac{3}{8}$ " c = 1"
 15 $\frac{3}{4}$ " (400 mm) cc. 2 $\frac{9}{16}$ " proj. 17 $\frac{5}{16}$ " oa.



726 - US32 • US32D
 11 $\frac{3}{4}$ " (300 mm) cc. 2 $\frac{3}{4}$ " proj. 14 $\frac{15}{16}$ " oa.

FINISH OPTIONS
 US32 Polished Stainless Steel
 US32D Satin Stainless Steel

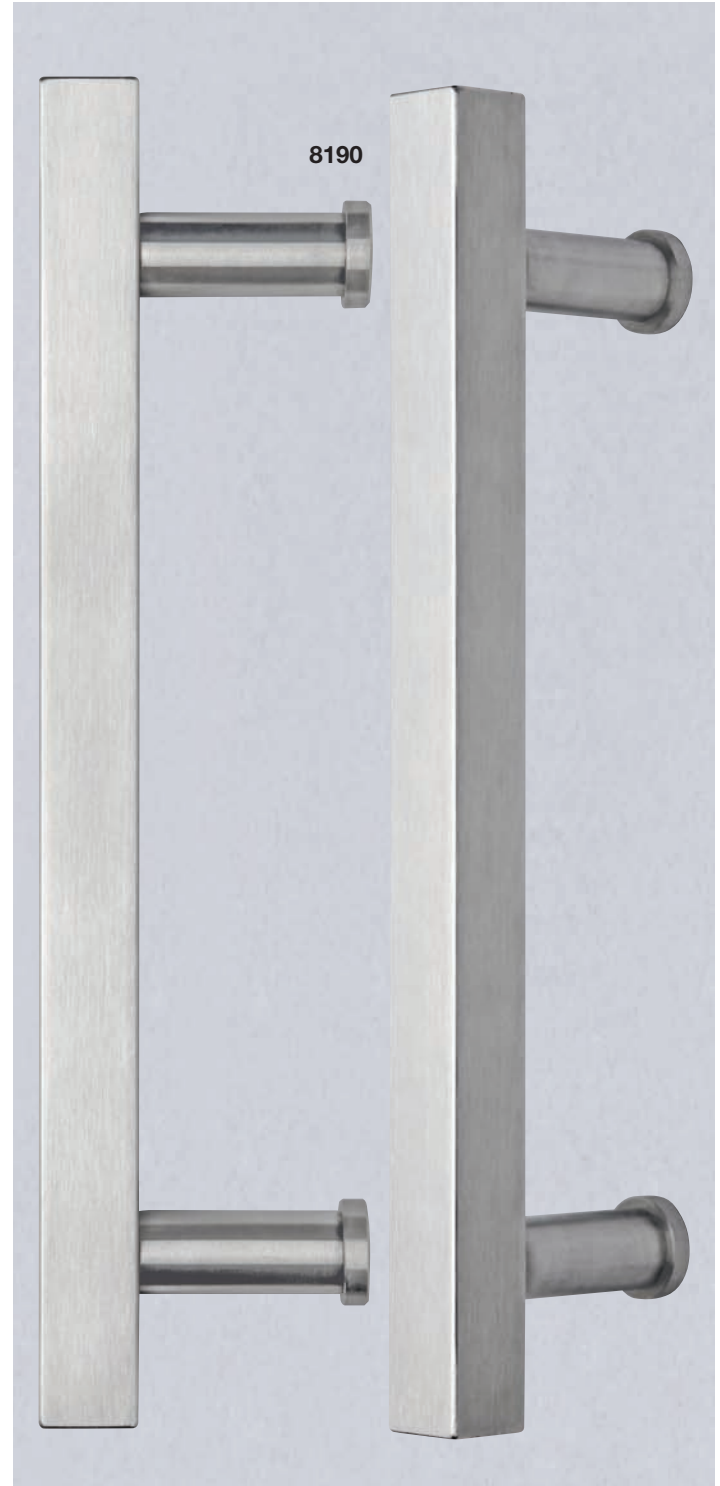


STAINLESS STEEL



728

PROFILE



8190

728 - US32 • US32D

15³/₄" (400 mm) cc. 2¹/₆" proj. 19¹/₂" oa.

8190 - US32D

8190/300	11 ¹³ / ₁₆ " cc.	3 ⁹ / ₁₆ " proj.	15 ³ / ₄ " oa.
8190/400	15 ³ / ₄ " cc.	3 ⁹ / ₁₆ " proj.	23 ⁵ / ₈ " oa.

FINISH OPTIONS

US32. Polished Stainless Steel
 US32D Satin Stainless Steel

STAINLESS STEEL



4019 - US32D

4019/300	8" cc.	2 ⁵ / ₈ " proj.	9" oa.
4019/400	12" cc.	2 ¹⁵ / ₁₆ " proj.	13 ¹ / ₄ " oa.
4019/500	16" cc.	3 ³ / ₈ " proj.	17 ¹ / ₂ " oa.

4010 - US32D

4010/300	8" cc.	2 ⁵ / ₈ " proj.	9" oa.
4010/400	12" cc.	2 ¹⁵ / ₁₆ " proj.	13 ¹ / ₄ " oa.
4010/500	16" cc.	3 ³ / ₈ " proj.	17 ¹ / ₂ " oa.



STAINLESS STEEL

Omnia's Stainless Steel collection is a natural extension to our product line of decorative hardware that is distinctly unique and practical. Known for our designs and quality, Omnia has been providing the industry for more than four decades with architectural hardware that continues to realize exceptional standards.

Made from the highest grade materials, Omnia's Stainless Steel is resistant to corrosion and tarnish. Durable and strong, our Stainless Steel is ideal for those environments exposed to particular conditions, such as shoreline and other weathering variables. Requiring little maintenance, the luster of our Stainless Steel is bright yet warm.

Created with state-of-the-art technology and crafted from our discriminating designs, the Omnia Stainless Steel collection is an exceptional addition to our catalog of decorative hardware. It is certain to accentuate any setting where a clean, contemporary look is desired.

Care of Product

Omnia's Stainless Steel requires minimal attention and will not tarnish or corrode under normal circumstances. However, exposure to certain chemical or environmental conditions may, over time, promote surface oxidation. Please be aware that this is not a defect in the stainless steel but a reaction on the surface of the finish to the chemical environment which can be removed with a stainless steel polish.

