



ASSA ABLOY

Price List
Effective April 15, 2008



ASSA ABLOY, the global leader
in door opening solutions

TOOLS AND RULES

Business Hours	3
2008 Holiday and Inventory Schedule	3
Ordering Tips	4
Checklist when Placing an Order	4
Order Form	5
How to Sign up for:	
eBusiness	6
Fax Program – Order Acknowledgements and Invoices	7
Terms & Conditions	8-9
Limited Warranty	10
Trademark Use Policy	11
Finishes and Fasteners	12
1600BC Series Closers	13
1600BC Special Application Closers	14
1601 Series Closers	15
1600BC, 1601 Accessories	17
1700BC Series Closers & Accessories	18
No. 2 Door Holder	18
2800ST Cam Action Closers & Accessories	19
7500 Series Closers	20-21
7700 Series Closers	22-23
7700 Special Application Closers	24
7500/7700 Accessories	24-25
78-B/F Series Closers	40
78-B/F Accessories	41
7900 Overhead Concealed Closers	42
8100 Series Closers	27
8300 Series Closers	28
8500 Series Closers	29-30
8101 Series Closers	31
8301 Series Closers	32-33
8501 Series Closers	34-35
8000 Accessories	36-37
9300BC Series Closers & Accessories	38-39

CORROSION RESISTANT CLOSERS

1600BCSS	16
1601SS	16
7500SS	21

SECURITY CLOSERS

7570 & 7770	26
7970 Overhead Closers	42

ELECTRIFIED

5700 Series LEO®	51
5700 Accessories	51
6900 Series PowerMatic®	47-49
6900 Accessories	50
7200 Electromechanical Closers	43-45
7700PT Power Track®	46

PARTS

Closer Bodies	52
Fasteners	53

ARM & ARM ASSEMBLIES

Parallel Rigid, CloserPlus®, CloserPlus Spring™	57
1600BC, 7500/7700, 8000, 9300BC	54-56
1700BC	56
78-B/F	61
Low Profile	56
Stainless Steel	58
Security	58
Unitrol® (Parallel & Top Jamb)	59

MISCELLANEOUS

Slide Track	60
78-B/F	61
7900	62

ELECTRIFIED

Power Track®	63-64
Electromechanical	65-66
PowerMatic®	67-68
LEO®	69

SERVICE CENTER BUSINESS HOURS

**ASSA ABLOY Door Security Solutions
Customer Service – Monroe**
1902 Airport Road
Monroe, NC 28110
Tel: (800) 438-1951
Fax: (800) 338-0965
8:00 a.m. – 4:30 p.m. (Eastern)

Norton Technical Product Support
3000 Highway 74 East
Monroe, NC 28112
Tel: (877) 974-2255
Fax: (704) 233-1608
8:00 a.m. – 4:30 p.m. (Eastern)

ASSA ABLOY Door Security Solutions – West
1992 Rockefeller Drive, Suite 300
Ceres, CA 95307
Tel: (209) 538-1879
(800) 443-2012
(800) 621-2756 (within California)
Fax: (209) 538-1381
7:30 a.m. – 4:00 p.m. (Pacific)

Electrified Technical Product Support
1902 Airport Road
Monroe, NC 28110
Tel: (800) 438-1962
Fax: (704) 283-0789
8:00 a.m. – 5:00 p.m. (Eastern)

HOLIDAY AND INVENTORY SCHEDULE*

Norton Door Controls will be **CLOSED** on the following dates:

2008

March 21 - Good Friday
May 26 - Memorial Day
July 4 - Independence Day
September 1 - Labor Day
November 27 - Thanksgiving
November 28 - Floater
December 24 - Christmas Eve
December 25 - Christmas
December 26 - Floater

INVENTORY

August 29 - Physical Inventory

* Dates subject to change

Norton®, Power Track®, Unicontrol®, CloserPlus®, Tri-Style®, PowerMatic® and LEO® are registered trademarks of Yale Security Inc. CloserPlus Spring™ and Executive™ are trademarks of Yale Security Inc. Other products' brand names may be trademarks or registered trademarks of their respective owners and are mentioned for reference purposes only. These materials are protected under U.S. copyright laws. All contents current at time of publication. Copyright © 2002 - 2008 Yale Security Inc. All rights reserved. Reproduction in whole or in part without the express written permission of Yale Security Inc. is prohibited.



ASSA ABLOY

ORDERING TIPS

- ✓ Please submit Quick Ship Product Orders and Factory Product Orders on separate order forms.
- ✓ If you have a Quote, please include it with the purchase order. Orders without this information included may be delayed.
- ✓ Be sure to include Finish for all Closers and Most Accessories.
- ✓ Be sure to include Voltage on 7200's and Power Track® orders.
- ✓ Be sure to include Door Width for Unitrol® (UNI's) orders.
- ✓ Be sure to include Handing for all 78-B/F's, 7200's and Security Closers.
- ✓ Be sure to include RA or PA Arms for 78-B/F's.
- ✓ Be sure to include Size on 7200's and 7700's.
- ✓ Be sure to include Depth of Reveal for Unitrol's Top Jamb (UNIJ's).

CHECKLIST

Before placing your order, check for the following ...

- ✓ Purchase Order on Company Letterhead
- ✓ Purchase Order is Legible
- ✓ Purchase Order Number
- ✓ Account Number
- ✓ Ship To Address
- ✓ Contact Person for Additional Information Requirements
- ✓ Pricing Requirements - Buying Program or CPQ (please attach)
- ✓ Quick Ship Order (Quick Ship Order Form or Stock #'s Included)
- ✓ Handing (78-B/F's, 7200's, Security Closers)
- ✓ Door Width (UNI's)
- ✓ Finish (all Closers, Most Accessories)
- ✓ Size (7700's, 7200's)
- ✓ Voltage (7200's, Power Track®)
- ✓ Depth of Reveal (UNIJ's)
- ✓ Arms (PA or RA for 78B/F's)

ORDER FORM

It is recommended that the Door Closers Order Form included on page 5 of this price book be used when placing orders for Norton® products. Copies of this form can also be printed from our website (www.nortondoorcontrols.com).



ASSA ABLOY

WEBSITE

For the latest information regarding Norton® products, visit our website at www.nortondoorcontrols.com. The site is easy to navigate and gives quick access to catalogs, templates, installation instructions, product bulletins, etc. If additional assistance is needed to choose the correct product for an application, a listing by series (including photographs and bullets) is available at the bottom of the home page.

TEMPLATES AND INSTALLATION INSTRUCTIONS

All Norton® templates and installation instructions are available on our website.

eBUSINESS

Visit www.nortondoorcontrols.com to sign up for eBusiness access. To sign up for eBusiness, follow the simple instructions listed below. Register today and start enjoying the many benefits! eBusiness offers anytime access to:

- Order Status
- Order Check by P.O.
- Stock Status Check
- Cross Reference Guide
- Newsletters
- Online Store
- Contact Webmaster
- Extended Literature (Price Books, Order Forms)
- Fax Program Sign Up
- Order Acknowledgements
- Invoices
- Return Good Authorizations

How to sign up for eBusiness access:

Step 1: Visit our website at www.nortondoorcontrols.com.

Step 2: Double-click eBusiness icon (top right corner).

Step 3: Complete ASSA ABLOY Door Security Solutions eBusiness sign-up form.



FAX PROGRAM

Would you like to receive your Acknowledgements, Invoices and Return Good Authorizations invoices quickly and efficiently? If so, ASSA ABLOY Door Security Solutions offers the Order Acknowledgement, Invoice and Return Good Authorization Fax Program. Please see the simple steps below to get signed up today!

Requirement: Valid eBusiness User ID and Password (If you do not have an eBusiness User ID and Password, please refer to the eBusiness Sign-up Section included in this Price Book.)

- Step 1: Log into eBusiness.
- Step 2: Double-click on "Sign Up a Distributor for ASSA ABLOY Door Security Solutions Fax Program Now!"
- Step 3: Fill in appropriate information.
- Step 4: Click on "Sign up for Fax Program!"



ACCEPTANCE

Norton reserves the right to decline an order, in whole or in part, when the type or quantity of goods or credit worthiness of the Purchaser is not satisfactory to us in our sole and absolute discretion. Purchase Orders, Quote Requests, Acknowledgements or the like issued by the Purchaser that have contrary standard terms and conditions are not binding on Norton, unless such terms and conditions are approved in a separate written agreement by Norton® authorized representatives. In the event of an acceptance of Purchaser's Purchase Order by Norton, the Purchaser agrees that such acceptance is solely conditioned on Purchaser's acceptance of the terms and conditions set forth in this instrument, regardless of the terms and conditions specified in Purchaser's Purchase Order. The terms and conditions in Purchaser's Purchase Order which conflict with the terms and conditions of this instrument shall be disregarded and are hereby rejected, and this instrument shall constitute the entire agreement between Norton and the Purchaser.

In the event that Norton does not enforce or require strict performance of any term or condition hereof, or of any other document, instrument or other agreement relating to goods sold, such lack of enforcement or requirement of strict performance will not waive, affect or diminish any right of Norton to enforce or require strict performance of such term or condition in the future.

PRICES

All prices are subject to change without notice and are not guaranteed. All shipments will be made at prices in effect at the time of shipment.

Possession of this price list does not constitute an agreement to sell.

We reserve the right to correct clerical, stenographic and other obvious errors at any time.

TERMS

Invoices dated the 1st through the 15th will be due for 2% discount on the *10th of the following month. Invoices dated the 16th through the 31st will be due for 2% discount on the *25th of the following month. *Net immediately thereafter. (Norton retains the right to sell or to decline to sell to any Customer for any reason whatsoever that in its judgment is deemed sufficient.)

It is understood that Norton may impose and charge a finance charge which is the lesser of one and one-half percent (1-1/2%) per month or the highest rate allowed by law on any amount which becomes past due and delinquent. Additionally the Customer shall be responsible for all collection costs, court costs and reasonable attorney's fees (where allowed by law) in connection with the recovery of any delinquent amount.

FREIGHT

All orders are shipped FOB factory/warehouse, except as expressly provided below. When delivered to the Transportation Company, the Purchaser assumes the risk of loss or damage in transit.

Customer orders with net product value in excess of \$3,000.00 will be shipped prepaid to a single destination point in the United States.

Customer orders with net product value less than \$3,000.00 will be shipped prepaid by Norton's carrier of choice, and the shipping charges will be added to Customer's invoice. Norton will choose the carrier and routing. If a Customer requests an alternative carrier, freight charges will be incurred on Customer's invoice.

MINIMUM INVOICE

Minimum invoice for complete product is \$250.00 net product value. The minimum invoice for parts orders is \$100.00 net product value.

QUOTATIONS

If Norton elects to offer a quote, such quote will be valid for one hundred twenty (120) days. Complete shipment of the order must be accepted by Purchaser within standard lead times.

The quote number must be referenced on the order. Any invoiced order that has the incorrect discount applied to it and did not have the quote number written on the order will have a service fee of \$75.00 net DEDUCTED from any sales credit issued for the difference in discount.

The quote is null and void if the Purchase Order does not include **ALL** product lines listed on the quote or if the quantities for any item covered by the quote deviate by 10% or more.

With the issuance and acceptance of a quote for the purchase of products, the Purchaser agrees that products so purchased will not be resold or transferred to any Distributor not authorized by Norton to sell its products. This would be inclusive of branches of the quoted Distributor. Failure to abide by this restriction may result in the Distributor's ineligibility for Quotations, or other actions in Norton's discretion.

Norton and its sales representatives reserve the right, in their sole discretion and for any reason, to refuse a Distributor's request to quote a price other than Norton standard list price and regardless of whether Norton or its sales representatives have previously quoted discounted prices to the Distributor on some or all of its orders.

NON-CATALOGED PRODUCTS

Products not cataloged or listed in this price book will be considered as special products, and will not be manufactured without prior written approval from Norton.

A minimum special handling charge of \$50.00 will be added for non-cataloged product. Any additional labor or material required will be charged accordingly.

Special products require special handling, and therefore standard lead times may not apply. Please consult with your Norton® Sales Representative for further details.

CHANGES/CANCELLATION OF ORDERS

Changes or cancellations to an order will result in a charge of costs for material and labor expenses that have been incurred prior to notification from Customer. Handling charges are billed on Customer's original order.

All Non-Cataloged Goods and NORTON Quick Ship Orders may not be changed or cancelled.

All change requests for goods, other than for the reasons stated above, must be submitted in writing to Customer Service within two (2) business days of receipt of acknowledgment of the order.

ADD-ON ORDERS TO QUOTE

Any new order requesting special pricing to match an existing quote number, which has already been ordered, will be accepted up to sixty (60) days after the acknowledgement of the original order. All add-on orders must reference the original factory order number and the corresponding quote number to receive the quoted pricing discount. Add-on orders for stock will not be accepted.

PACKAGING

Many items are defined as to Case Lot Packaging or Minimum Order. The Case Lot policy does not apply to hardware to be used on a specific hardware project.

DELIVERY

Orders will be acknowledged and given a scheduled delivery date based on estimated manufacturing lead times. Complete information is required to process all orders. Orders with insufficient information for processing (i.e. door sizes, handing, etc.) may be subject to extended lead times which are relative to the time required in obtaining the necessary information for order processing. Manufacturing lead time will begin once all information is received to process an order. Norton will use reasonable efforts to deliver products as estimated, but makes no guarantees as to delivery dates.

Norton will not be liable for back charges incurred based on availability of product or as a result of delays in delivery caused by insufficient information required to process an order.

Norton will not be held responsible for delays in delivery caused by strikes, fires, floods or any other causes beyond our control, including the delivery of material to us. Under no circumstances shall Norton be liable or accountable for consequential damages due to failure of delivery.

CLAIMS

In the event of Company or Customer error, claims for shortages, pricing errors and/or incorrectly filled orders must be submitted in writing to Customer Service within thirty (30) days from receipt of material.

Any claims for shortages or damage by the Carrier must be made by the Customer directly to the Carrier.

INVOICE DEDUCTION

A NORTON Sales Representative or Customer Service Representative must be notified of any disputed invoices within sixty (60) days from the date of invoice. Deductions should only be taken for the disputed amount and the balance of the invoice is due and payable within standard payment terms.

RETURNED GOODS

It is the policy of Norton to not accept returns of any materials that are correctly furnished as per the Distributor's Purchase Order. Return of product due to customer order error or accommodation must be pre-arranged with Norton and approved in writing by Sales Management.

All products returned as "Goodwill" must meet the following criteria to be considered a return:

- Be in original, unmarked and undamaged cartons.
- Be valued in excess of \$250.00 net.
- Shipped and invoiced within the previous 120 days.
- Custom orders and non-cataloged goods, are not returnable.

A **MINIMUM** restocking fee of **45%** will be charged. Upon receipt and verification by Norton that the returned merchandise meets the foregoing conditions, a credit will be issued for the original invoice amount less the **MINIMUM 45%** restocking fee.

Defective goods and "Goodwill" products that meet the foregoing criteria may be returned by fulfilling the following conditions:

- Send an RGA request in writing to the NORTON Sales Representative serving the Purchaser's area.
- Ensure the RGA labels that are sent to Purchaser by Norton are visible on return goods shipment.
- Ensure that the RGA number appears on the return shipment label and is legible.
- Return the authorized merchandise within sixty (60) days from the date of RGA issuance date.
- Return shipments must be freight prepaid to the location specified on the RGA. Norton is not liable for damages to product during shipping.

No credit may be taken or issued prior to RGA approval and receipt of product. All defective goods within the terms of our limited warranty may be returned for credit or replacement.

TAXES

Prices do not include any present or future Federal, State, or Local property, license, privilege, sales, use, excise, gross receipts or other like taxes or assessments, which may result from transactions or any services performed in connection herewith.

GOVERNING LAW

The rights and obligations of the parties shall be governed by the laws of the State of North Carolina, excluding any conflicts of law provisions. The United Nations Convention on Contracts for the International Sale of Goods shall not apply to this Agreement.

LIMITED WARRANTY

The Terms and Conditions outlined above are subject to Norton's Limited Warranty, which is included in this Price List and incorporated herein by reference.

PRODUCT MODIFICATIONS

NORTON products are not designed or intended for aftermarket modification. The warranty on NORTON products becomes void if the product is modified in any way, regardless of whether the modification causes or contributes to any alleged defect. Warranty voiding modifications include, but are not limited to, third-party electrification of non-electric products and/or the installation of non-approved or non-Norton components.

If a NORTON product is modified it no longer meets industry certification and quality control standards applicable to the original product and is no longer a genuine NORTON product. A modified product may not be sold as a NORTON product and no NORTON trademarks or certification marks based on the original NORTON product, such as U.L. or ANSI/BHMA marks, may appear anywhere on the modified product or on any packaging, literature, or instructions sold with the modified product.

All original NORTON packaging and literature carries NORTON trademarks and must be destroyed if the original NORTON product is modified. Portions of the product that carry a NORTON trademark or certification mark must be discarded and/or replaced by the party making the modification. U.L. and other certification testing and marking are also the responsibility of the party making modification. The use of NORTON trademarks on modified products constitutes trademark infringement.



ASSA ABLOY

Limited Warranty

Limited Warranty

LIMITED WARRANTY

Yale Security Inc[®] (the "Company") warrants that its products sold under the NORTON trade name in the United States of America are free from defects in workmanship and materials under normal use and service.

This warranty does not cover defects or damage arising from improper installation, lack of or improper maintenance, improper storage, shipping and handling, ordinary wear and tear, misuse, abuse, accident, unauthorized service, use with unauthorized non-Norton products or parts or the effects of erosion, or corrosion on the finish. This warranty is void if any modification is made to the product, regardless of whether the modification causes or contributes to the alleged defect. All modifications are made at the risk of the party making the modification.

The only liability of the Company in tort or contract whether under this warranty or otherwise shall be limited to the repair or replacement of any product or component part which shall prove defective as covered by this warranty.

The warranty period after delivery to the original purchaser in all cases is as follows:

NORTON Door Controls:

- Series 1700 and 9300BC closers 5 years
- Electromechanical closers, Power Track[®] closers,
6900 PowerMatic[®], 5700 Series LEO[®] 2 years
- 2800ST Cam Action Closer 10 years
- All other door controls 10 years
- Aluminum shells of all NORTON door controls
(in the building in which originally installed) Life of building

The Company will not pay for the cost of repair performed other than in accordance with this warranty. Written notice of a product or component part believed to be defective as covered by this warranty should be sent to Yale Security, Inc. 1902 Airport Road, Monroe, NC 28110, and should include your name and address, an identification of the product or component part and a brief description of the defect. Upon receipt of such notice, the Company will inform you where to ship such product or component part, shipping charges prepaid, for examination and, in the event such examination reveals defect covered by this warranty, the product will be repaired or replaced.

THIS WARRANTY IS IN LIEU OF ALL OTHER EXPRESS WARRANTIES. TO THE EXTENT PERMITTED BY LAW, ALL IMPLIED WARRANTIES ARE LIMITED TO THE DURATION OF THIS WARRANTY. YALE SECURITY INC. SHALL NOT BE LIABLE FOR ANY INCIDENTAL OR CONSEQUENTIAL DAMAGES.

SOME STATES DO NOT ALLOW LIMITATIONS ON HOW LONG AN IMPLIED WARRANTY LASTS OR THE EXCLUSION OR LIMITATION OF INCIDENTAL OR CONSEQUENTIAL DAMAGES, SO THE ABOVE LIMITATIONS OR EXCLUSIONS MAY NOT APPLY TO YOU. THIS WARRANTY GIVES YOU SPECIFIC LEGAL RIGHTS, AND YOU MAY ALSO HAVE OTHER RIGHTS, WHICH VARY FROM STATE TO STATE.

The following policy ("Policy") of ASSA ABLOY Americas ("ASSA ABLOY"), and all of its affiliated group companies (collectively, the "Group Companies"), applies to the use of certain intellectual property of all such Group Companies, including all trademarks, names, logos, product images, and related information (the "ASSA ABLOY Marks"). ASSA ABLOY Marks are proprietary and critical to the success of ASSA ABLOY and the Group Companies, and may only be used in strict compliance with this Policy. This Policy covers any person or entity reselling any product of any Group Company with the consent of such Group Company (each, an "Approved Reseller"). Each Approved Reseller has a non-exclusive right to use certain of the ASSA ABLOY Marks relating to any of the Group Companies for which it is an Approved Reseller, subject to the following conditions:

- (1) Approved Reseller's use of ASSA ABLOY Marks must be truthful, fair, and not misleading;
- (2) Approved Reseller's advertising must clearly indicate that it is advertising of the Approved Reseller, and is not advertising of ASSA ABLOY;
- (3) Approved Reseller may not use any ASSA ABLOY Marks as part of or in connection with a domain name;
- (4) Approved Reseller's advertising must not imply or suggest an association between the Approved Reseller and ASSA ABLOY other than that of buyer and seller;
- (5) Approved Reseller's use of ASSA ABLOY Marks must be a positive representation of ASSA ABLOY, the Group Companies, and their products;
- (6) Approved Reseller's trade name must be more predominant on Approved Reseller's advertising than the ASSA ABLOY Marks;
- (7) Approved Reseller's use of ASSA ABLOY Marks must include the trademark symbol ® or TM, as appropriate, along with the following trademark legend printed in legible text on the Web page or document containing ASSA ABLOY Marks: "[describe ASSA ABLOY Marks] are trademarks or registered trademarks of ASSA ABLOY, Inc. or one of its affiliates in the United States and other countries.";
- (8) Approved Reseller must not make modifications of any ASSA ABLOY Marks; and
- (9) Approved Reseller may use only ASSA ABLOY Marks associated with the Group Companies for which it is an Approved Reseller (e.g., an Approved Reseller that sells Group Company X products but not Group Company Y products may use Group Company X trademarks in connection with its sale of Group Company X products, but may not use Group Company Y trademarks).

ASSA ABLOY reserves the right to review Approved Reseller's usage of ASSA ABLOY Marks at any time and may:

- (a) require changes to the use of ASSA ABLOY Marks at any time in its sole discretion, which changes must be implemented within 30 days of written notice to Approved Reseller;
- (b) condition the use of ASSA ABLOY Marks on ASSA ABLOY's prior approval of such use, which approval may be withheld in its sole discretion;
- (c) revoke permission to use ASSA ABLOY Marks at any time for any or no reason upon 30 days prior written notice to Approved Reseller; and
- (d) revoke permission to use ASSA ABLOY Marks immediately upon notice to Approved Reseller in the event Approved Reseller is in violation of this Policy, or of any other agreement with ASSA ABLOY or any Group Company.

Approved Reseller's right to use ASSA ABLOY Marks in no way conveys to Approved Reseller any proprietary or economic interest in any ASSA ABLOY Marks. Use of ASSA ABLOY Marks in violation of this Policy may result in severe civil and criminal liabilities. ASSA ABLOY will vigorously enforce this Policy by seeking all appropriate legal remedies, including, but not limited to, pecuniary damages and injunctive relief.



ASSA ABLOY

Finishes and Fasteners

Finishes/Fasteners

STANDARD SPRAYED FINISHES

BHMA	DESCRIPTION
689	Aluminum Painted
690	Dark Bronze Painted
691	Light Bronze Painted
693	Black Painted
694	Medium Bronze Painted
696	Satin Brass Painted
600	Primed for Painting

6FIN - Sprayed Finish Samples - \$10.00

PLATING CHARGES

SERIES 8500, 8501, 7500, 7700

Arm	ADD \$216.00
*Cover - Metal	ADD \$171.00
Drop Plates	ADD \$131.00
Sex Nuts	ADD \$19.00
Soffit Plates	ADD \$67.00

*Metal cover suffix "M" to closer model number. Cost of metal cover included in plating charge.

SPECIAL FINISHES: CONTACT FACTORY FOR AVAILABILITY AND PRICE. MINIMUM OF FIFTY (50) UNITS.

600: special rust inhibiting prime coat. An additional charge applies if finish coat is required over prime coat (ex: 8501 x 600 x 689).	ADD \$23.00
LEAD LINED METAL COVER	ADD \$116.00
*GROMMET NUTS: Suffix "TBGN" to model number Ordered with closer - PKG of 4 each	N/C
*SEX NUTS: Bolts excluded Ordered with closer - Sprayed Steel - PKG of 4 each Ordered with closer - Stainless Steel - PKG of 4 each	ADD \$2.00 ADD \$50.00
*SECURITY Torx® HEAD SCREWS: Standard sizes only - each screw	ADD \$1.00
Torx® TOOL KIT #20-0040-0868-005 Includes one handle/driver and six bits; T10, T15, T20, T25, T27 and T30 Note: Furnished no charge with first 30 closers. Another kit furnished with each additional 50 closers.	ADD \$106.00

*See page 53 for packages.

PLATED FINISHES (Full Cover Only)

BHMA	DESCRIPTION
605E	Bright Brass Clear Coated
606E	Satin Brass Clear Coated
611E	Bright Bronze Clear Coated
612E	Satin Bronze Clear Coated
613E	Dark Oxidized Satin Bronze, Oil Rubbed
625E	Bright Chrome Plated
626E	Satin Chrome Plated

PLATING CHARGES

SERIES 1600BC, 1601

Arm	ADD \$216.00
-----	--------------

PLATING CHARGES

SERIES 7900, 7970

Arm	ADD \$216.00
Dress Plates	ADD \$216.00

DOOR CLOSER PAINT (PRICE PER CAN)

(12 cans per carton)

MODEL NUMBER	PRODUCT DESCRIPTION	LIST PRICE
1A	Aluminum Spray Paint (689)	\$31.00
2B	Light Bronze Spray Paint (691)	\$31.00
5S	Dark Bronze (STAT) Spray Paint (690)	\$31.00
6G	Gold Spray Paint (696)	\$31.00

1600BC Closers



1600BC SERIES CLOSERS – Specify Size 2 thru 6

(6 per case)

NON-HOLD OPEN

MODEL NUMBER	PRODUCT DESCRIPTION	APPROX. SHIPPING WEIGHT (lbs)	LIST PRICE
1600BC	Regular, Parallel, Top Jamb to 3" Reveal	8	\$176.00
J1600BC	Top Jamb Only Reveals 2-3/4" to 7"	8	\$176.00
PR1600BC	Parallel Rigid (Security) Arm	8	\$188.00
1680BC	Regular Low Profile Arm	8	\$176.00
P1680BC	Parallel Low Profile Arm	8	\$176.00
CLP1600BC	Stop Only (Security)	9	\$211.00
CPS1600BC	Stop Only (Security) w/Spring	9	\$309.00
^UNI1600BC	Unitrol® Door Control	10	\$320.00
*UNIJ1600BC	Top Jamb Unitrol® Door Control	10	\$336.00

HOLD OPEN

1600BCH	Regular, Parallel, Top Jamb to 3" Reveal	9	\$202.00
J1600BCH	Top Jamb Only Reveals 2-3/4" to 6-3/4"	9	\$202.00
PR1600BCH	Parallel Rigid (Security) Arm (Handed)	9	\$214.00
CLP1600BCT	Holder/Stop Thumbturn (Security)	9	\$245.00
CPS1600BCT	Holder/Stop Thumbturn (Security) w/Spring	9	\$342.00
^UNI1600BCH	Unitrol® Door Control	10	\$359.00
*UNIJ1600BCH	Top Jamb Unitrol® Door Control	10	\$380.00

*When Ordering Specify Reveal.

^When Ordering Specify Door Width.

Note: Sex Nuts furnished standard with PR, CLP, CPS and UNI arms.

OPTION

P	Cover suffix "P" to model number	Add \$14.00
---	----------------------------------	-------------

Note: Delayed Action Not Available for 1600BC Series. Use 1601 Series with Delayed Action.



ASSA ABLOY

1600BC Special Application Closers

1600BC SERIES SPECIAL APPLICATION CLOSERS

(6 per case)

MODEL NUMBER	PRODUCT DESCRIPTION	APPROX. SHIPPING WEIGHT (lbs)	LIST PRICE
1602BCCOUP	Coupon Booth Hold Open	8	\$201.00
1603BCCOUP	Coupon Booth Hold Open	8	\$201.00
1603BCHOSP	Hospital Hold Open	8	\$265.00
1604BCHOSP	Hospital Hold Open	8	\$265.00
1602BCTEL	Telephone Booth	8	\$201.00

OPTION

P	Cover suffix "P" to model number	Add \$14.00
---	----------------------------------	-------------

Note: Delayed Action Not Available for 1600BC Series. Use 1601 Series with Delayed Action.

1600 Series

1601 Closers



1601 SERIES CLOSERS – Adjustable Sizes 3 thru 6

(6 per case)

NON-HOLD OPEN

MODEL NUMBER	PRODUCT DESCRIPTION	APPROX. SHIPPING WEIGHT (lbs)	LIST PRICE
1601	Regular, Parallel, Top Jamb to 3" Reveal	8	\$176.00
J1601	Top Jamb Only Reveals 2-3/4" to 7"	8	\$176.00
PR1601	Parallel Rigid (Security) Arm	8	\$188.00
1681	Regular Low Profile Arm	8	\$176.00
P1681	Parallel Low Profile Arm	8	\$176.00
CLP1601	Stop Only (Security)	8	\$211.00
CPS1601	Stop Only (Security) w/Spring	9	\$309.00
^UNI1601	Unitrol® Door Control	10	\$320.00
*UNIJ1601	Top Jamb Unitrol® Door Control	10	\$336.00

1600 Series

HOLD OPEN

1601H	Regular, Parallel, Top Jamb to 3" Reveal	9	\$202.00
J1601H	Top Jamb Only Reveals 2-3/4" to 6-3/4"	9	\$202.00
PR1601H	Parallel Rigid (Security) Arm (Handed)	9	\$214.00
CLP1601T	Holder/Stop Thumbturn (Security)	8	\$245.00
CPS1601T	Holder/Stop Thumbturn (Security) w/Spring	9	\$342.00
^UNI1601H	Unitrol® Door Control	10	\$359.00
*UNIJ1601H	Top Jamb Unitrol® Door Control	10	\$380.00

*When Ordering Specify Reveal.

^When Ordering Specify Door Width.

Note: Sex Nuts furnished standard with PR, CLP, CPS and UNI arms.

OPTIONS

BF	Barrier Free suffix "BF" to list number (adjustable sizes 1 thru 4)	\$0.00
P	Cover suffix "P" to list number	\$14.00
DA	Delayed Action suffix "DA" to list number (N/A with Backcheck)	\$29.00



ASSA ABLOY

1600BCSS, 1601SS Closers

1600BCSS CORROSION RESISTANT CLOSERS – Specify Size 2 thru 6

(6 per case)

NON-HOLD OPEN

MODEL NUMBER	PRODUCT DESCRIPTION	APPROX. SHIPPING WEIGHT (lbs)	LIST PRICE
1600BCSS	Regular, Top Jamb to 3" Reveal	8	\$432.00
P1600BCSS	Parallel Arm	8	\$432.00
J1600BCSS	Top Jamb Only Reveals 2-3/4" to 7"	8	\$432.00

1601SS CORROSION RESISTANT CLOSERS - ADJUSTABLE SIZES 3-6

(6 per case)

NON-HOLD OPEN

MODEL NUMBER	PRODUCT DESCRIPTION	APPROX. SHIPPING WEIGHT (lbs)	LIST PRICE
1601SS	Regular, Top Jamb to 3" Reveal	8	\$432.00
P1601SS	Parallel Arm	8	\$432.00
J1601SS	Top Jamb Only Reveals 2-3/4" to 7"	8	\$432.00

Stainless Steel Closers not discounted beyond 50%. Excluded from Buying Program.

1601SS OPTIONS ONLY

BF	Barrier Free suffix "BF" to model number (adjustable sizes 1 thru 4)	\$0.00
P	Cover suffix "P" to model number (Stainless Steel cover not available)	\$14.00
DA	Delayed Action suffix "DA" to model number (N/A with Backcheck)	\$29.00

1600 Series

BACK PLATES & DROP PLATES FOR 1600BC, 1601 SERIES CLOSERS

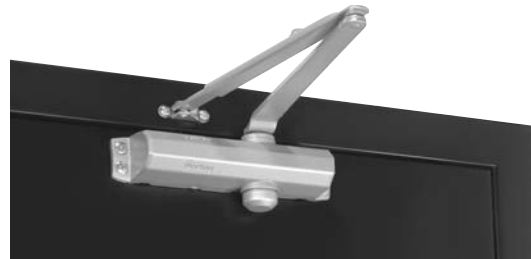
MODEL NUMBER	PRODUCT DESCRIPTION	LIST PRICE
1687	Low Ceiling Clearance Drop Plate	\$29.00
1688	Overhead Holder or Narrow Top Jamb Drop Plate	\$29.00
1688C	Parallel Arm Drop Plate (used when optional cover is supplied)	\$29.00
1699	Retrofit Adaptor Plate	\$36.00

ACCESSORIES FOR 1600BC, 1601 SERIES CLOSERS

MODEL NUMBER	PRODUCT DESCRIPTION	LIST PRICE
*1618A	Standard Soffit Plate, Non-Hold Open	\$15.80
1618A-SS	Stainless Steel Soffit Plate	\$39.00
*1628H	Standard Soffit Plate, Hold Open	\$15.80
1647	Corner Bracket	\$76.00
2017	Retrofit Adaptor Plate	\$22.40
*2018	Soffit Bracket (Mounting Between Doors)	\$22.40
*2018B	Narrow Frame/Removable Stop Soffit Plate	\$22.40
*2018D	Blade/Applied Stop Soffit Plate	\$22.40
*2018S	Extra Clearance Offset Soffit Plate	\$22.40
*2019L	Flush Rabbeted Transom Angle Bracket	\$16.60
2022	Flush Transom Angle Bracket	\$22.40
2019S	Standard Spacer Block	\$5.20
2019S-7/8	Spacer Block for use w/ 5/8" Stop and 1/4" Weatherstrip (PR, CLP, CPS only)	\$12.50
2019S-25	Spacer Block for Wide Soffit and 1/4" Weatherstrip (PR, CLP, CPS only)	\$18.70
*2403	Molded/Bull Nose Trim Bracket	\$22.40
*2403-3/4	Molded/Bull Nose Trim Bracket	\$22.40
80	Molded/Bull Nose Trim Bracket	\$22.40
**6190	Unitrol® Soffit Plate Support Bracket	\$22.40
6191	Unitrol® Wide Frame Reinforcing Kit	\$31.00
6191B-25	Unitrol® Wide Frame Reinforcing for Wide Soffit and 1/4" Weatherstrip	\$60.00
6890	Narrow Frame Support Bracket	\$22.40
6891	Clearance/Support Blade Stop	\$22.40
1600P	Plastic Cover	\$19.00
1639	Pinion Cap	\$3.10

* No charge when ordered with closer.

** Furnished regularly with all Parallel Arm Unitrols, no extra.
When ordering 6191 in place of 6190, no extra.


1700BC SERIES CLOSERS – Sizes 1 thru 4
(10 per case)

MODEL NUMBER	PRODUCT DESCRIPTION	APPROX. SHIPPING WEIGHT (lbs)	LIST PRICE
1700BC	Regular, Parallel, Top Jamb NHO Closer	3-1/2	\$145.00
1700BCH	Regular, Parallel, Top Jamb HO Closer	4	\$166.00

ACCESSORIES FOR 1700BC SERIES CLOSERS

MODEL NUMBER	PRODUCT DESCRIPTION	APPROX. SHIPPING WEIGHT (lbs)	LIST PRICE
17P	Cover	1/2	\$4.40
1739	Pinion Cap		\$3.00
1746, 1748	Drop Plate	1/3	\$20.00
1756, 1757, 1758	Drop Plate	1/3	\$44.00
1788	Parallel Arm Adaptor Plate HO	1/3	\$10.90
1789	Parallel Arm Bracket	1/3	\$8.50

OPTION

COV	Cover ordered with closer suffix "COV" to 1700BC	\$4.00
-----	--	--------

NO. 2 DOOR HOLDER

MODEL NUMBER	PRODUCT DESCRIPTION	APPROX. SHIPPING WEIGHT (lbs)	LIST PRICE
#2	Door Holder	3	\$133.00
#2 x 1618D	Door Holder x 1618D Bracket	3	\$133.00
9-B, 9-B/C, 9-E/F	Adaptor Plates		\$36.80

2800ST Cam Action Door Closers

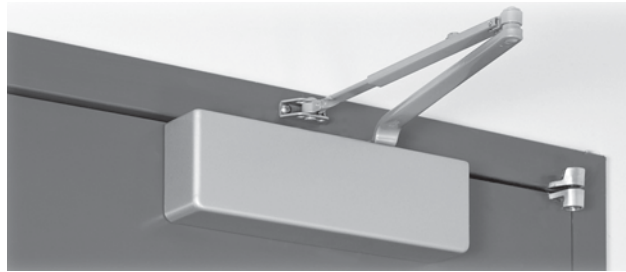


2800ST CAM ACTION CLOSERS

MODEL NUMBER	PRODUCT DESCRIPTION	APPROX. SHIPPING WEIGHT (lbs)	LIST PRICE
2800ST	Pull Side, Non-Hold Open	8	\$335.00
2800STH	Pull Side, Hold Open	8	\$350.00
PS2800ST	Push Side, Non-Hold Open	8	\$335.00
PS2800STH	Push Side, Hold Open	8	\$350.00

PARTS

MODEL NUMBER	PRODUCT DESCRIPTION	LIST PRICE
7701ST-1T	Pull Side Slide Track Assy NHO	\$96.00
7701ST-3T	Pull Side Slide Track Assy Hold Open	\$147.00
7701ST-5T	Push Side Slide Track Assy NHO	\$96.00
7701ST-8T	Push Side Slide Track Assy Hold Open	\$147.00
2800ST-1A	Track Arm Package	\$24.00
2800LAP	Closer Body Only	\$309.00
SP2800B	Closer Screw Pack	\$6.20
SP2800S	Spline Screw Pack	\$16.00
SP2800T	Track Screw Pack	\$8.30
7700ASC	Arm Stud Clip	\$4.40
7700SLD	Slider Assembly	\$51.00
7700STEC	End Cap NHO and Hold Open (2 required)	\$3.80
2800P	Plastic Cover	\$28.00


7500 SERIES CLOSERS - Adjustable Sizes 1 thru 6
(4 per case)
NON-HOLD OPEN

MODEL NUMBER	PRODUCT DESCRIPTION	APPROX. SHIPPING WEIGHT (lbs)	LIST PRICE
7500	Regular, Parallel or Top Jamb to 3" Reveal	13	\$322.00
J7500	Top Jamb Only Reveals 2-3/4" to 7" (to 150°)	13	\$322.00
JL7500	Top Jamb Only Reveals 2-3/4" to 7" (to 180°)	13	\$322.00
PR7500	Parallel Rigid (Security) Arm	13	\$334.00
7580	Regular Low Profile Arm	13	\$322.00
P7580	Parallel Low Profile Arm	13	\$322.00
7500ST	Pull Side Slide Track	13	\$357.00
7540ST	Pull Side Low Profile Slide Track	13	\$357.00
PS7500ST	Push Side Slide Track	13	\$357.00
PS7540ST	Push Side Low Profile Slide Track	13	\$357.00
CLP7500	Stop Only (Security)	14	\$357.00
CPS7500	Stop Only (Security) w/Spring	15	\$455.00
^UNI7500	Unitrol® Door Control	15	\$466.00
*UNIJ7500	Top Jamb Unitrol® Door Control	15	\$482.00

*When Ordering Specify Reveal.

^When Ordering Specify Door Width.

Note: Sex Nuts furnished standard with PR, CLP, CPS and UNI arms.

7500, 7500SS Closers



7500 SERIES CLOSERS - Adjustable Sizes 1 thru 6

(4 per case)

HOLD OPEN

MODEL NUMBER	PRODUCT DESCRIPTION	APPROX. SHIPPING WEIGHT (lbs)	LIST PRICE
7500H	Regular, Parallel or Top Jamb to 3" Reveal	13	\$348.00
J7500H	Top Jamb Only Reveals 2-3/4" to 6-3/4" (to 150°)	13	\$348.00
JL7500H	Top Jamb Only Reveals 2-3/4" to 6-3/4" (to 180°)	13	\$348.00
PR7500H	Parallel Rigid (Security) Arm (Handed)	13	\$360.00
7500STH	Pull Side Slide Track	13	\$380.00
7540STH	Pull Side Low Profile Slide Track	13	\$380.00
PS7500STH	Push Side Slide Track	13	\$380.00
PS7540STH	Push Side Low Profile Slide Track	13	\$380.00
CLP7500T	Holder/Stop Thumbturn (Security)	14	\$391.00
CPS7500T	Holder/Stop Thumbturn (Security) w/Spring	15	\$488.00
^UNI7500H	Unitrol® Door Control	15	\$505.00
*UNIJ7500H	Top Jamb Unitrol® Door Control	15	\$526.00

*When Ordering Specify Reveal.

^When Ordering Specify Door Width.

Note: Sex Nuts furnished standard with PR, CLP, CPS and UNI arms.

7500SS SERIES CORROSION RESISTANT CLOSERS (Non-Hold Open Only)

(4 per case)

MODEL NUMBER	PRODUCT DESCRIPTION	APPROX. SHIPPING WEIGHT (lbs)	LIST PRICE
7500SS	Regular Arm or Top Jamb to 3" Reveal	14	\$667.00
P7500SS	Parallel Arm	14	\$667.00
J7500SS	Top Jamb 2-3/4" to 7" Reveal	14	\$667.00

Stainless Steel Closers not discounted beyond 50%. Excluded from Buying Program.

OPTIONS

DA	Delayed Action suffix "DA" to model number	Add \$29.00
PRO	Offset Soffit Plate prefix "PRO" to model number (N/A in Stainless Steel)	Add \$15.00
EBC	Enhanced Backcheck suffix "EBC" to model number	Add \$21.00
M	Metal Cover suffix "M" to model number (N/A in Stainless Steel)	Add \$4.00
DE	Double Egress suffix "DE" to Slide Track model number (handed) hinge side only. (N/A in Stainless Steel)	Add \$42.00
R	Regular rigid heavy-duty arm prefix "R" to model number. Torx® screws not included (N/A in Stainless Steel) - See page 53 for Torx® screw packages.	Add \$29.00

7500/7700 Series



7700 SERIES CLOSERS – Specify Size 2 thru 6

(4 per case)

Non-Hold Open

MODEL NUMBER	PRODUCT DESCRIPTION	APPROX. SHIPPING WEIGHT (lbs)	LIST PRICE
7700	Regular Arm & Top Jamb to 2-3/4" Reveal	11	\$322.00
P7700	Parallel Arm	11	\$322.00
J7700	Top Jamb 2-3/4" to 7" Reveal (to 150°)	11	\$322.00
JL7700	Top Jamb 2-3/4" to 7" Reveal (to 180°)	11	\$322.00
PR7700	Parallel Rigid (Security) Arm	11	\$334.00
7780	Regular Low Profile Arm	11	\$322.00
P7780	Parallel Low Profile Arm	11	\$322.00
7700ST	Pull Side Slide Track (Sizes 4, 5 or 6 only)	11	\$357.00
7740ST	Pull Side Low Profile Slide Track	11	\$357.00
PS7700ST	Push Side Slide Track (Sizes 4, 5 or 6 only)	11	\$357.00
PS7740ST	Push Side Low Profile Slide Track	11	\$357.00
CLP7700	Stop Only (Security)	11	\$357.00
CPS7700	Stop Only (Security) w/Spring	12	\$455.00
^UNI7700	Unitrol® Door Control	12	\$466.00
*UNIJ7700	Top Jamb Unitrol® Door Control	12	\$482.00

*When Ordering Specify Reveal.

^When Ordering Specify Door Width.

Note: Sex Nuts furnished standard with PR, CLP, CPS and UNI arms.

7500/7700 Series

7700 Closers



ASSA ABLOY

7700 SERIES CLOSERS – Specify Size 2 thru 6

(4 per case)

HOLD OPEN

MODEL NUMBER	PRODUCT DESCRIPTION	APPROX. SHIPPING WEIGHT (lbs)	LIST PRICE
7700H	Regular Arm & Top Jamb to 2-3/4" Reveal	11	\$348.00
P7700H	Parallel Arm	11	\$348.00
J7700H	Top Jamb 2-3/4" to 6-3/4" Reveal (Handed) (to 150°)	11	\$348.00
JL7700H	Top Jamb 2-3/4" to 6-3/4" Reveal (Handed) (to 180°)	11	\$348.00
PR7700H	Parallel Rigid (Security) Arm (Handed)	11	\$360.00
7700STH	Pull Side Slide Track (Sizes 4, 5 or 6 only)	11	\$380.00
7740STH	Pull Side Low Profile Slide Track	11	\$380.00
PS7700STH	Push Side Slide Track (Sizes 4, 5 or 6 only)	11	\$380.00
PS7740STH	Push Side Low Profile Slide Track	11	\$380.00
CLP7700T	Holder/Stop Thumbturn (Security)	11	\$391.00
CPS7700T	Holder/Stop Thumbturn (Security) w/Spring	12	\$488.00
^UNI7700H	Unitrol® Door Control	12	\$505.00
*UNIJ7700H	Top Jamb Unitrol® Door Control	12	\$526.00

*When Ordering Specify Reveal.

^When Ordering Specify Door Width.

Note: Sex Nuts furnished standard with PR, CLP, CPS and UNI arms.

OPTIONS

DA	Delayed Action suffix "DA" to model number	Add \$29.00
PRO	Offset Soffit Plate prefix "PRO" to model number	Add \$15.00
EBC	Enhanced Backcheck suffix "EBC" to model number	Add \$21.00
M	Metal Cover suffix "M" to model number (handed for top jamb)	Add \$4.00
DE	Double Egress suffix "DE" to Slide Track model number (handed) hinge side only.	Add \$42.00
J	J prefix for Slide Track (includes 7786JP plate)	Add \$53.00
R	Regular rigid heavy-duty arm prefix "R" to model number. Torx® screws not included. See page 53 for Torx® screw packages.	Add \$29.00

7500/7700 Series



ASSA ABLOY

7700 Special Application Closers
7500/7700 Accessories

7700 SERIES SPECIAL APPLICATION CLOSERS

(4 per case)

MODEL NUMBER	PRODUCT DESCRIPTION	APPROX. SHIPPING WEIGHT (lbs)	LIST PRICE
7703HOSP	3 Point Hospital Hold Open Regular	11	\$409.00
7704HOSP	3 Point Hospital Hold Open Parallel or Top Jamb (Specify Hand)	11	\$409.00
7702COUP	Coupon Booth Closer - Regular, Parallel	11	\$339.00
7703COUP	Coupon Booth Closer - Top Jamb (Specify Hand)	11	\$339.00
7702TEL	Telephone Booth	11	\$339.00
7706STP	Slider Arm Pocket Door	13	\$357.00
7706EPSTP	Slider Arm Pocket Door	13	\$357.00
7706DLP	Double Lever Pocket Door (Up to 36" doors)	13	\$357.00
7706EPDLP	Double Lever Pocket Door (37" to 48" doors)	13	\$357.00

BACK PLATES & DROP PLATES FOR 7500, 7700 SERIES CLOSERS

MODEL NUMBER	PRODUCT DESCRIPTION	LIST PRICE
7786	Narrow Frame Drop Plate	\$53.00
77860H	Overhead Door Holder Drop Plate	\$53.00
7786JP	Slide Track Back Plate	\$53.00
7787	Low Ceiling Clearance Drop Plate	\$53.00
7788	Narrow Top Rail Drop Plate	\$53.00
7790	Adaptor Plate for Converting 7404-5-6	\$53.00

RETROFIT PLATES FOR 7500, 7700 SERIES CLOSERS

MODEL NUMBER	PRODUCT DESCRIPTION	LIST PRICE
RP75-4040	Replaces LCN 4040	\$46.20
RP75-4010	Replaces LCN 4010	\$46.20
RP75-M2020	Replaces Rixson® M2020	\$46.20

7500/7700 Series

ACCESSORIES FOR 7500, 7700 SERIES CLOSERS

MODEL NUMBER	PRODUCT DESCRIPTION	LIST PRICE
*1618	Standard Soffit Plate, Non-Hold Open	\$15.80
1618A-SS	Stainless Steel Soffit Plate	\$39.00
*1628H	Standard Soffit Plate, Hold Open	\$15.80
*2018	Soffit Bracket (Mounting Between Doors)	\$22.40
*2018B	Narrow Frame/Removable Stop Soffit Plate	\$22.40
*2018D	Blade/Applied Stop Soffit Plate	\$22.40
*2018S	Extra-Clearance Offset Soffit Plate	\$22.40
*2019L	Flush Rabbeted Transom Angle Bracket	\$16.60
*2019S	Standard Spacer Block	\$5.20
2019S-7/8	Spacer Block for use w/ 5/8" Stop and 1/4" Weatherstrip (PR, CLP, CPS only)	\$12.50
2019S-25	Spacer Block for Wide Soffit and 1/4" Weatherstrip (PR, CLP, CPS only)	\$18.70
*2022	Flush Transom Angle Bracket	\$22.40
*2403	Molded/Bull Nose Trim Bracket	\$22.40
*2403-3/4	Molded/Bull Nose Trim Bracket	\$22.40
80	Molded/Bull Nose Trim Bracket	\$22.40
**6190	Unitrol® Soffit Plate Support Bracket	\$22.40
6191	Unitrol® Wide Frame Reinforcing Kit	\$31.00
6191B-25	Unitrol® Wide Frame Reinforcing for Wide Soffit and 1/4" Weatherstrip	\$60.00
6890	Narrow Frame Support Bracket	\$22.40
6891	Clearance/Support Blade Stop	\$22.40
7797	Extra Drop Mounting Bracket	\$106.00
7798	Standard Drop Corner Bracket	\$106.00
P77MT	Metal Template	\$33.00

* No charge when ordered with closer.

** Furnished regularly with all Parallel Arm Unitrols, no extra.

When ordering 6191 in place of 6190, no extra.

COVERS

7700P	7500, 7700 Series Plastic Covers - Painted	\$22.00
7700M	7500, 7700 Series Metal Covers - Painted	\$26.00
J7700M	J7500, J7700 Series Metal Covers - Painted (Handed)	\$26.00
7700M	7500, 7700 Series Metal Covers - Plated	\$197.00
J7700M	J7500, J7700 Series Metal Covers - Plated (Handed)	\$197.00

7500/7700 Series



ASSA ABLOY

7570, 7770 Security Closers

7570 SERIES WITH SECURITY ARM, SECURITY COVER AND TORX® SCREWS - Adjustable Sizes 1 thru 6 - Specify Hand

(2 per case)

MODEL NUMBER	PRODUCT DESCRIPTION	APPROX. SHIPPING WEIGHT (lbs)	LIST PRICE
7570	Regular Rigid Arm	11	\$426.00
PR7570	Parallel Rigid (Security) Arm	12	\$438.00
CLP7570	Parallel (Security) Arm with Stop	12	\$461.00
CPS7570	Parallel (Security) Arm with Stop & Spring	13	\$559.00
CLP7570T	Parallel with Stop and Thumbturn	13	\$495.00
CPS7570T	Parallel (Security) Arm w/Thumbturn & Spring	13	\$592.00
UNI7570	Unitrol® Arm	13	\$570.00
7570ST	Pull Side Slide Track	12	\$461.00
PS7570ST	Push Side Slide Track	12	\$461.00

7770 SERIES WITH SECURITY COVER, SECURITY ARM AND TORX® SCREWS - Specify size 2 thru 6 - Specify Hand

(2 per case)

MODEL NUMBER	PRODUCT DESCRIPTION	APPROX. SHIPPING WEIGHT (lbs)	LIST PRICE
7770	Regular Rigid Arm	11	\$426.00
PR7770	Parallel Rigid (Security) Arm	12	\$438.00
CLP7770	Parallel (Security) Arm with Stop	12	\$461.00
CPS7770	Parallel (Security) Arm with Stop & Spring	13	\$559.00
CLP7770T	Parallel (Security) Arm w/Thumbturn	13	\$495.00
CPS7770T	Parallel (Security) Arm w/Thumbturn & Spring	13	\$592.00
UNI7770	Unitrol® Arm	13	\$570.00
7770ST	Pull Side Slide Track	12	\$461.00
PS7770ST	Push Side Slide Track	12	\$461.00

OPTIONS

DA	Delayed Action suffix "DA" to model number	Add \$29.00
EBC	Enhanced Backcheck suffix "EBC" to model number	Add \$21.00

ACCESSORIES

7778	Drop Plate	Add \$54.00
------	------------	-------------

Security Closers are 50% off list only unless special factory quotation applies.
Security Closers are excluded from buying programs.

7500/7700 Series

8100 Closers



8101



8301



8501

8100 SERIES WITHOUT COVER – Specify Size 2 thru 6

(4 per case)

NON-HOLD OPEN

MODEL NUMBER	PRODUCT DESCRIPTION	APPROX. SHIPPING WEIGHT (lbs)	LIST PRICE
8100	Regular Arm or Top Jamb to 3" Reveal	8	\$231.00
P8100	Parallel Arm	8	\$231.00
J8100	Top Jamb 2-3/4" to 7" Reveal (to 150°)	8	\$231.00
PR8100	Parallel Rigid (Security) Arm	8	\$243.00
8180	Regular Low Profile Arm	8	\$231.00
P8180	Parallel Low Profile Arm	8	\$231.00

HOLD OPEN

8100H	Regular Arm or Top Jamb to 2-3/4" Reveal	8	\$257.00
P8100H	Parallel Arm	8	\$257.00
J8100H	Top Jamb 2-3/4" to 6-3/4" Reveal (to 150°)	8	\$257.00
PR8100H	Parallel Rigid (Security) Arm (Handed)	8	\$269.00

OPTIONS

DA	Delayed Action suffix "DA" to model number	Add \$29.00
PRO	Offset Soffit Plate prefix "PRO" to model number	Add \$15.00
R	Regular rigid heavy-duty arm prefix "R" to model number. Torx® screws not included. See page 53 for Torx® screw packages.	Add \$29.00



ASSA ABLOY

8300 Closers

8300 SERIES WITH SLIM LINE COVER – Specify Size 2 thru 6

(4 per case)

NON-HOLD OPEN

MODEL NUMBER	PRODUCT DESCRIPTION	APPROX. SHIPPING WEIGHT (lbs)	LIST PRICE
8300	Regular Arm or Top Jamb to 3" Reveal	8	\$243.00
P8300	Parallel Arm	8	\$243.00
J8300	Top Jamb 2-3/4" to 7" Reveal (to 150°)	8	\$243.00
PR8300	Parallel Rigid (Security) Arm	8	\$255.00
8380	Regular Low Profile Arm	8	\$243.00
P8380	Parallel Low Profile Arm	8	\$243.00
8300ST	Pull Side Slide Track (Sizes 4, 5 or 6 only)	8	\$278.00
J8300ST	Top Jamb Pull Side Slide Track (Sizes 4, 5 or 6 only)	8	\$278.00
PS8300ST	Push Side Slide Track (Sizes 4, 5 or 6 only)	8	\$278.00
8340ST	Pull Side Low Profile Slide Track	8	\$278.00
PS8340ST	Push Side Low Profile Slide Track	8	\$278.00
CLP8300	Stop Only (Security)	9	\$278.00
CPS8300	Stop Only (Security) w/Spring	10	\$376.00
^UNI8300	Unitrol® Door Control	10	\$387.00
*UNIJ8300	Top Jamb Unitrol® Door Control	10	\$403.00

HOLD OPEN

8300H	Regular Arm or Top Jamb to 2-3/4" Reveal	8	\$269.00
P8300H	Parallel Arm	8	\$269.00
J8300H	Top Jamb 2-3/4" to 6-3/4" Reveal (to 150°)	8	\$269.00
PR8300H	Parallel Rigid (Security) Arm (Handed)	8	\$281.00
8300STH	Pull Side Slide Track (Sizes 4, 5 or 6 only)	8	\$301.00
J8300STH	Top Jamb Pull Side Slide Track (Sizes 4, 5 or 6 only)	8	\$301.00
PS8300STH	Push Side Slide Track (Sizes 4, 5 or 6 only)	8	\$301.00
8340STH	Pull Side Low Profile Slide Track	8	\$301.00
PS8340STH	Push Side Low Profile Slide Track	8	\$301.00
CLP8300T	Holder/Stop Thumbturn (Security)	9	\$312.00
CPS8300T	Holder/Stop Thumbturn (Security) w/Spring	10	\$409.00
^UNI8300H	Unitrol® Door Control	10	\$426.00
*UNIJ8300H	Top Jamb Unitrol® Door Control	10	\$447.00

*When Ordering Specify Reveal.

^When Ordering Specify Door Width.

J8300ST(H) - 8146 drop plate included.

Note: Sex Nuts furnished standard with PR, CLP, CPS and UNI arms.

OPTIONS

DA	Delayed Action suffix "DA" to model number	Add \$29.00
PRO	Offset Soffit Plate prefix "PRO" to model number	Add \$15.00
DE	Double Egress suffix "DE" to Slide Track model number (handed) (hinge side only)	Add \$42.00
R	Regular rigid heavy-duty arm prefix "R" to model number. Torx® screws not included. See page 53 for Torx® screw packages.	Add \$29.00

8500 SERIES WITH FULL COVER – Specify Size 2 thru 6

(4 per case)

NON-HOLD OPEN

MODEL NUMBER	PRODUCT DESCRIPTION	APPROX. SHIPPING WEIGHT (lbs)	LIST PRICE
8500	Regular Arm or Top Jamb to 3" Reveal	8	\$249.00
P8500	Parallel Arm	8	\$249.00
J8500	Top Jamb 2-3/4" to 7" Reveal (to 150°)	8	\$249.00
PR8500	Parallel Rigid (Security) Arm	8	\$261.00
8580	Regular Low Profile Arm	8	\$249.00
P8580	Parallel Low Profile Arm	8	\$249.00
8500ST	Pull Side Slide Track (Sizes 4, 5 or 6 only)	8	\$284.00
J8500ST	Top Jamb Pull Side Slide Track (Sizes 4, 5 or 6 only)	8	\$284.00
PS8500ST	Push Side Slide Track (Sizes 4, 5 or 6 only)	8	\$284.00
8540ST	Pull Side Low Profile Slide Track	8	\$284.00
PS8540ST	Push Side Low Profile Slide Track	8	\$284.00
CLP8500	Stop Only (Security)	9	\$284.00
CPS8500	Stop Only (Security) w/Spring	10	\$382.00
^UNI8500	Unitrol® Door Control	10	\$393.00
*UNIJ8500	Top Jamb Unitrol® Door Control	10	\$409.00

*When Ordering Specify Reveal.

^When Ordering Specify Door Width.

J8500ST - 8146 drop plate included.

Note: Sex Nuts furnished standard with PR, CLP, CPS and UNI arms.

OPTIONS

DA	Delayed Action suffix "DA" to model number	Add \$29.00
PRO	Offset Soffit Plate prefix "PRO" to model number	Add \$15.00
A	Plastic Architectural Cover suffix "A" to model number (painted only)	Add \$0.00
M	Metal Cover suffix "M" to model number	Add \$6.00
MA	Metal Architectural Cover suffix "MA" to model number (painted finishes)	Add \$6.00
DE	Double Egress prefix "DE" to model number (handed)	Add \$42.00
R	Regular rigid heavy-duty arm prefix "R" to model number. Torx® screws not included. See page 53 for Torx® screw packages.	Add \$29.00

8000 Series



8500 SERIES WITH FULL COVER – Specify Size 2 thru 6

(4 per case)

HOLD OPEN

MODEL NUMBER	PRODUCT DESCRIPTION	APPROX. SHIPPING WEIGHT (lbs)	LIST PRICE
8500H	Regular Arm or Top Jamb to 2-3/4" Reveal	8	\$275.00
P8500H	Parallel Arm	8	\$275.00
J8500H	Top Jamb 2-3/4" to 6-3/4" Reveal (to 150°)	8	\$275.00
PR8500H	Parallel Rigid (Security) Arm (Handed)	8	\$287.00
8500STH	Pull Side Slide Track (Sizes 4, 5 or 6 only)	8	\$307.00
J8500STH	Top Jamb Pull Side Slide Track (Sizes 4, 5 or 6 only)	8	\$307.00
PS8500STH	Push Side Slide Track (Sizes 4, 5 or 6 only)	8	\$307.00
8540STH	Pull Side Low Profile Slide Track	8	\$307.00
PS8540STH	Push Side Low Profile Slide Track	8	\$307.00
CLP8500T	Hold/Open Thumbturn (Security)	9	\$318.00
CPS8500T	Hold/Open Thumbturn (Security) w/Spring	10	\$415.00
^UNI8500H	Unitrol® Door Control	10	\$432.00
*UNIJ8500H	Top Jamb Unitrol® Door Control	10	\$453.00

*When Ordering Specify Reveal.

^When Ordering Specify Door Width.

J8500STH 8146 Drop Plate included.

Note: Sex Nuts furnished standard with PR, CLP, CPS and UNI arms.

OPTIONS

DA	Delayed Action suffix "DA" to model number	Add \$29.00
PRO	Offset Soffit Plate prefix "PRO" to model number	Add \$15.00
A	Plastic Architectural Cover suffix "A" to model number (painted only)	Add \$0.00
M	Metal Cover suffix "M" to model number	Add \$6.00
MA	Metal Architectural Cover suffix "MA" to model number (painted finishes)	Add \$6.00
DE	Double Egress suffix "DE" to Slide Track model number (handed) (hinge side only)	Add \$42.00
R	Regular rigid heavy-duty arm prefix "R" to model number. Torx® screws not included. See page 53 for Torx® screw packages.	Add \$29.00

8101 Closers



8101 SERIES WITHOUT COVER – Adjustable Size 1 thru 6

(4 per case)

NON-HOLD OPEN

MODEL NUMBER	PRODUCT DESCRIPTION	APPROX. SHIPPING WEIGHT (lbs)	LIST PRICE
8101	Regular, Parallel, Top Jamb to 3" Reveal	8	\$231.00
J8101	Top Jamb 2-3/4" to 7" Reveal (to 150°)	8	\$231.00
PR8101	Parallel Rigid (Security) Arm	8	\$243.00
8181	Regular Low Profile Arm	8	\$231.00
P8181	Parallel Low Profile Arm	8	\$231.00

HOLD OPEN

8101H	Regular, Parallel, Top Jamb to 3" Reveal	8	\$257.00
J8101H	Top Jamb 2-3/4" to 6-3/4" Reveal (to 150°)	8	\$257.00
PR8101H	Parallel Rigid (Security) Arm (Handed)	8	\$269.00

OPTIONS

DA	Delayed Action suffix "DA" to model number	Add \$29.00
PRO	Offset Soffit Plate prefix "PRO" to model number	Add \$15.00
R	Regular rigid heavy-duty arm prefix "R" to model number. Torx® screws not included. See page 53 for Torx® screw packages.	Add \$29.00



ASSA ABLOY

8301 Closers

8301 SERIES WITH SLIM LINE COVER – Adjustable Size 1 thru 6

(4 per case)

NON-HOLD OPEN

MODEL NUMBER	PRODUCT DESCRIPTION	APPROX. SHIPPING WEIGHT (lbs)	LIST PRICE
8301	Regular, Parallel or Top Jamb to 3" Reveal	8	\$243.00
J8301	Top Jamb 2-3/4" to 7" Reveal	8	\$243.00
PR8301	Parallel Rigid (Security) Arm	8	\$255.00
8381	Regular Low Profile Arm	8	\$243.00
P8381	Parallel Low Profile Arm	8	\$243.00
8301ST	Pull Side Slide Track	8	\$278.00
8341ST	Pull Side Low Profile Slide Track	8	\$278.00
J8301ST	Top Jamb Pull Side Slide Track	8	\$278.00
PS8301ST	Push Side Slide Track	8	\$278.00
PS8341ST	Push Side Low Profile Slide Track	8	\$278.00
CLP8301	Stop Only (Security)	9	\$278.00
CPS8301	Stop Only (Security) w/Spring	10	\$376.00
^UNI8301	Unitrol® Door Control	10	\$387.00
*UNIJ8301	Top Jamb Unitrol® Door Control	10	\$403.00

*When Ordering Specify Reveal.

^When Ordering Specify Door Width.

J8301ST - 8146 Drop Plate included.

Note: Sex Nuts furnished standard with PR, CLP, CPS and UNI arms.

OPTIONS

DA	Delayed Action suffix "DA" to model number	Add \$29.00
PRO	Offset Soffit Plate prefix "PRO" to model number	Add \$15.00
DE	Double Egress suffix "DE" to Slide Track model number (handed) (hinge side only)	Add \$42.00
R	Regular rigid heavy-duty arm prefix "R" to model number. Torx® screws not included. See page 53 for Torx® screw packages.	Add \$29.00

8000 Series

8301 Closers



ASSA ABLOY

8301 SERIES WITH SLIM LINE COVER – Adjustable Size 1 thru 6

(4 per case)

HOLD OPEN

MODEL NUMBER	PRODUCT DESCRIPTION	APPROX. SHIPPING WEIGHT (lbs)	LIST PRICE
8301H	Regular, Parallel or Top Jamb to 2-3/4" Reveal	8	\$269.00
J8301H	Top Jamb 2-3/4" to 6-3/4" Reveal	8	\$269.00
PR8301H	Parallel Rigid (Security) Arm (Handed)	8	\$281.00
8301STH	Pull Side Slide Track	8	\$301.00
8341STH	Pull Side Low Profile Slide Track	8	\$301.00
J8301STH	Top Jamb Pull Side Slide Track	8	\$301.00
PS8301STH	Push Side Slide Track	8	\$301.00
PS8341STH	Push Side Low Profile Slide Track	8	\$301.00
CLP8301T	Holder/Stop Thumbturn (Security)	9	\$312.00
CPS8301T	Holder/Stop Thumbturn (Security) w/Spring	10	\$409.00
^UNI8301H	Unitrol® Door Control	10	\$426.00
*UNIJ8301H	Top Jamb Unitrol® Door Control	10	\$447.00

*When Ordering Specify Reveal.

^When Ordering Specify Door Width.

J8301H - 8146 Drop Plate included.

Note: Sex Nuts furnished standard with PR, CLP, CPS and UNI arms.

OPTIONS

DA	Delayed Action suffix "DA" to model number	Add \$29.00
PRO	Offset Soffit Plate prefix "PRO" to model number	Add \$15.00
DE	Double Egress suffix "DE" to Slide Track model number (handed) (hinge side only)	Add \$42.00
R	Regular rigid heavy-duty arm prefix "R" to model number. Torx® screws not included. See page 53 for Torx® screw packages.	Add \$29.00

8000 Series



ASSA ABLOY

8501 Closers

8501 SERIES WITH FULL COVER – Adjustable Size 1 thru 6

(4 per case)

NON-HOLD OPEN

MODEL NUMBER	PRODUCT DESCRIPTION	APPROX. SHIPPING WEIGHT (lbs)	LIST PRICE
8501	Regular, Parallel or Top Jamb to 3" Reveal	8	\$249.00
J8501	Top Jamb 2-3/4" to 7" Reveal	8	\$249.00
PR8501	Parallel Rigid (Security) Arm	8	\$261.00
8581	Regular Low Profile Arm	8	\$249.00
P8581	Parallel Low Profile Arm	8	\$249.00
8501ST	Pull Side Slide Track	8	\$284.00
8541ST	Pull Side Low Profile Slide Track	8	\$284.00
J8501ST	Top Jamb Pull Side Slide Track	8	\$284.00
PS8501ST	Push Side Slide Track	8	\$284.00
PS8541ST	Push Side Low Profile Slide Track	8	\$284.00
CLP8501	Stop Only (Security)	9	\$284.00
CPS8501	Stop Only (Security) w/Spring	10	\$382.00
^UNI8501	Unitrol® Door Control	10	\$393.00
*UNIJ8501	Top Jamb Unitrol® Door Control	10	\$409.00

*When Ordering Specify Reveal.

^When Ordering Specify Door Width.

J8501ST - 8146 Drop Plate included.

Note: Sex Nuts furnished standard with PR, CLP, CPS and UNI arms.

OPTIONS

DA	Delayed Action suffix "DA" to model number	Add \$29.00
PRO	Offset Soffit Plate prefix "PRO" to model number	Add \$15.00
A	Plastic Architectural Cover suffix "A" to model number (painted only)	Add \$0.00
M	Metal Cover suffix "M" to model number	Add \$6.00
MA	Metal Architectural Cover suffix "MA" to model number (painted finishes)	Add \$6.00
DE	Double Egress suffix "DE" to Slide Track model number (handed) (hinge side only)	Add \$42.00
R	Regular rigid heavy-duty arm prefix "R" to model number. Torx® screws not included. See page 53 for Torx® screw packages.	Add \$29.00

8000 Series

8501 Closers



ASSA ABLOY

8501 SERIES WITH FULL COVER – Adjustable Size 1 thru 6

(4 per case)

HOLD OPEN

MODEL NUMBER	PRODUCT DESCRIPTION	APPROX. SHIPPING WEIGHT (lbs)	LIST PRICE
8501H	Regular, Parallel or Top Jamb to 2-3/4" Reveal	8	\$275.00
J8501H	Top Jamb 2-3/4" to 6-3/4" Reveal	8	\$275.00
PR8501H	Parallel Rigid Arm (Handed)	8	\$287.00
8501STH	Pull Side Slide Track	8	\$307.00
8541STH	Pull Side Low Profile Slide Track	8	\$307.00
J8501STH	Top Jamb Pull Side Slide Track	8	\$307.00
PS8501STH	Push Side Slide Track	8	\$307.00
PS8541STH	Push Side Low Profile Slide Track	8	\$307.00
CLP8501T	Holder/Stop Thumbturn (Security)	9	\$318.00
CPS8501T	Holder/Stop Thumbturn (Security) w/Spring	10	\$415.00
^UNI8501H	Unitrol® Door Control	10	\$432.00
*UNIJ8501H	Top Jamb Unitrol® Door Control	10	\$453.00

*When Ordering Specify Reveal.

^When Ordering Specify Door Width.

J8501STH - 8146 Drop Plate included.

Note: Sex Nuts furnished standard with PR, CLP, CPS and UNI arms.

OPTIONS

DA	Delayed Action suffix "DA" to model number	Add \$29.00
PRO	Offset Soffit Plate prefix "PRO" to model number	Add \$15.00
A	Plastic Architectural Cover suffix "A" to model number (painted only)	Add \$0.00
M	Metal Cover suffix "M" to model number	Add \$6.00
MA	Metal Architectural Cover suffix "MA" to model number (painted finishes)	Add \$6.00
DE	Double Egress suffix "DE" to Slide Track model number (handed) (hinge side only)	Add \$42.00
R	Regular rigid heavy-duty arm prefix "R" to model number. Torx® screws not included. See page 53 for Torx® screw packages.	Add \$29.00

8000 Series

BACK PLATES & DROP PLATES FOR 8000 SERIES CLOSERS

MODEL NUMBER	PRODUCT DESCRIPTION	LIST PRICE
8146	Narrow Top Rail/Concealed Door Holder Drop Plate	\$32.00
8148	Low Ceiling Clearance Drop Plate	\$32.00
8158	Exposed-Back/Narrow Top Rail Drop Plate	\$32.00
8445	Molded Full Cover Decorative Back Plate	\$32.00
8446	Exposed-Back Drop Plate Kit	\$64.00
8545	Exposed-Back Back Plate	\$32.00
8545A	Exposed-Back Back Plate	\$40.00
8546	Concealed Door Holder Drop Plate	\$32.00
8546A	Concealed Door Holder Drop Plate	\$63.00
8547	Low Ceiling Clearance/Overhead Door Holder Drop Plate	\$40.00
8547A	Low Ceiling Clearance/Overhead Door Holder Drop Plate	\$40.00
8548	Exposed-Back/Narrow Top Rail Drop Plate	\$40.00
8548A	Exposed-Back/Narrow Top Rail Drop Plate	\$40.00
8549	Exposed-Back/Narrow Top Rail Drop Plate	\$64.00
8549A	Exposed-Back/Narrow Top Rail Drop Plate	\$72.00

ACCESSORIES FOR 8000 SERIES CLOSERS

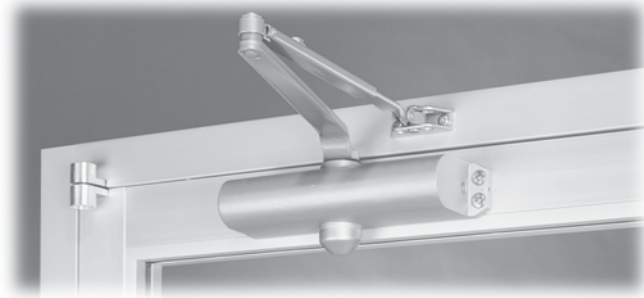
MODEL NUMBER	PRODUCT DESCRIPTION	LIST PRICE
*1618A	Standard Soffit Plate, Non-Hold Open	\$15.80
*1628H	Standard Soffit Plate, Hold Open	\$15.80
*2018	Soffit Bracket (Mounting Between Doors)	\$22.40
*2018B	Narrow Frame/Removable Stop Soffit Plate	\$22.40
*2018D	Blade/Applied Stop Soffit Plate	\$22.40
*2018S	Extra Clearance Offset Soffit Plate	\$22.40
*2019L	Flush Rabbeted Transom Angle Bracket	\$16.60
2019S	Standard Spacer Block	\$5.20
2019S-7/8	Spacer Block for use w/ 5/8" Stop and 1/4" Weatherstrip (PR, CLP, CPS only)	\$12.50
2019S-25	Spacer Block for Wide Soffit and 1/4" Weatherstrip (PR, CLP, CPS only)	\$18.70
*2022	Flush Transom Angle Bracket	\$22.40
*2403	Molded/Bull Nose Trim Bracket	\$22.40
*2403-3/4	Molded/Bull Nose Trim Bracket	\$22.40
80	Molded/Bull Nose Trim Bracket	\$22.40
**6190	Unitrol® Soffit Plate Support Bracket	\$22.40
6191	Unitrol® Wide Frame Reinforcing Kit	\$31.00
6191B-25	Unitrol® Wide Frame Reinforcing for Wide Soffit and 1/4" Weatherstrip	\$60.00
6890	Narrow Frame Support Bracket	\$22.40
6891	Clearance/Support Blade Stop	\$22.40
P80MT	Metal Template	\$33.00

*No charge when ordered with closer.
 ** Furnished regularly with all Parallel Arm Unitrols.
 When ordering 6191 in place of 6190, no extra.

COVERS

MODEL NUMBER	PRODUCT DESCRIPTION	LIST PRICE
8200P	Plastic Slim-Line Cover	\$12.00
8400P	Plastic Full Cover	\$18.00
8400A	Optional Plastic Architectural Cover	\$18.00
8400M	Metal Cover	\$24.00
8400M	When Ordered with Closer in Place of 8400P	\$6.00
8400MA	Optional Metal Architectural Cover	\$24.00
8400MA	When Ordered with Closer in Place of 8400P	\$6.00

8000 Series


9300BC SERIES CLOSERS
(6 per case)
NON-HOLD OPEN

MODEL NUMBER	PRODUCT DESCRIPTION	APPROX. SHIPPING WEIGHT (lbs)	LIST PRICE
9302BC	Regular Arm	6	\$130.00
9303BC	Regular Arm	6	\$130.00
9304BC	Regular Arm	6	\$130.00
9305BC	Regular Arm	6	\$130.00
P9302BC	Parallel Arm	6	\$130.00
P9303BC	Parallel Arm	6	\$130.00
P9304BC	Parallel Arm	6	\$130.00
P9305BC	Parallel Arm	6	\$130.00

HOLD OPEN

9302BCH	Regular Hold Open Arm	6	\$156.00
9303BCH	Regular Hold Open Arm	6	\$156.00
9304BCH	Regular Hold Open Arm	6	\$156.00
9305BCH	Regular Hold Open Arm	6	\$156.00
P9302BCH	Parallel Hold Open Arm	6	\$156.00
P9303BCH	Parallel Hold Open Arm	6	\$156.00
P9304BCH	Parallel Hold Open Arm	6	\$156.00
P9305BCH	Parallel Hold Open Arm	6	\$156.00

9300BC Closers and Accessories



ASSA ABLOY

9300BC TRI-STYLE® PACKAGING SERIES CLOSERS

(6 per case)

NON-HOLD OPEN

MODEL NUMBER	PRODUCT DESCRIPTION	APPROX. SHIPPING WEIGHT (lbs)	LIST PRICE
9302BC x 9318A	Regular Arm w/Parallel Bracket & Shoe	6	\$134.00
9303BC x 9318A	Regular Arm w/Parallel Bracket & Shoe	6	\$134.00
9304BC x 9318A	Regular Arm w/Parallel Bracket & Shoe	6	\$134.00
9305BC x 9318A	Regular Arm w/Parallel Bracket & Shoe	6	\$134.00

HOLD OPEN

9302BCH x 9328H	Regular Hold Open Arm w/Parallel Bracket & Shoe	6	\$160.00
9303BCH x 9328H	Regular Hold Open Arm w/Parallel Bracket & Shoe	6	\$160.00
9304BCH x 9328H	Regular Hold Open Arm w/Parallel Bracket & Shoe	6	\$160.00
9305BCH x 9328H	Regular Hold Open Arm w/Parallel Bracket & Shoe	6	\$160.00

BACK PLATE/DROP PLATE FOR 9300BC SERIES CLOSERS

MODEL NUMBER	PRODUCT DESCRIPTION	APPROX. SHIPPING WEIGHT (lbs)	LIST PRICE
9388	Drop Plate	1	\$29.00

ACCESSORIES FOR 9300BC SERIES CLOSERS

MODEL NUMBER	PRODUCT DESCRIPTION	APPROX. SHIPPING WEIGHT (lbs)	LIST PRICE
9318A	Parallel Arm Bracket, Non-Hold Open	1/2	\$15.80
9328H	Parallel Arm Bracket, Hold Open	1/2	\$15.80



78-B/F SERIES CLOSERS

(4 per case)

NON-HOLD OPEN

MODEL NUMBER	PRODUCT DESCRIPTION	APPROX. SHIPPING WEIGHT (lbs)	LIST PRICE
78B/D-RA	Regular Arm	10	\$431.00
78E/F-RA	Regular Arm	10	\$431.00
78B/D-PA	Parallel Arm	10	\$431.00
78E/F-PA	Parallel Arm	10	\$431.00
78B/D-DA*	Delayed Action Regular Arm Only	10	\$460.00
78E/F-DA*	Delayed Action Regular Arm Only	10	\$460.00
78B/D-PRA	Parallel Rigid Arm	10	\$443.00
78E/F-PRA	Parallel Rigid Arm	10	\$443.00
^UNI78B/D	Unitrol® Arm	13	\$575.00
^UNI78E/F	Unitrol® Arm	13	\$575.00

HOLD OPEN

78B/D-HA	Regular 90° - 180° Holder Arm	11	\$457.00
78E/F-HA	Regular 90° - 180° Holder Arm	11	\$457.00
78B/D-PHA	Parallel 90° - 180° Holder Arm	11	\$457.00
78E/F-PHA	Parallel 90° - 180° Holder Arm	11	\$457.00
78B/D-PRHA	Parallel Rigid Hold Open Arm	11	\$469.00
78E/F-PRHA	Parallel Rigid Hold Open Arm	11	\$469.00
^UNI78B/D-H	Unitrol® Hold Open Arm	13	\$614.00
^UNI78E/F-H	Unitrol® Hold Open Arm	13	\$614.00

^When Ordering Specify Door Width.

*Specify hand - not field reversible.

ACCESSORIES FOR 78-B/F SERIES CLOSERS

MODEL NUMBER	PRODUCT DESCRIPTION	LIST PRICE
88	Parallel Arm Drop Plate	\$39.90
#1-B/F	Soffit Bracket	\$66.00
#2-B/F	Corner Bracket	\$70.00
#5-B/F	Corner Bracket	\$70.00
#6-B/F	Adjustable Bracket	\$70.00
#7-B/F	Offset Adjustable Bracket	\$103.50
#8-B/F	Combination Bracket	\$70.00
9-B	Adapter Plate	\$36.80
9-B/C	Adapter Plate	\$36.80
9-E/F	Adapter Plate	\$36.80
*1618	Standard Soffit Plate, Non-Hold Open	\$15.80
*2018	Soffit Bracket (Mounting Between Doors)	\$22.40
*2018B	Narrow Frame/Removable Stop Soffit Plate	\$22.40
*2018D	Blade/Applied Stop Soffit Plate	\$22.40
*2018S	Extra-Clearance Offset Soffit Plate	\$22.40
*2019L	Flush Rabbeted Transom Angle Bracket	\$16.60
2019S	Standard Spacer Block	\$5.20
*2022	Flush Transom Angle Bracket	\$22.40
*2403	Molded/Bull Nose Trim Bracket	\$22.40
*2403-3/4	Molded/Bull Nose Trim Bracket	\$22.40
80	Molded/Bull Nose Trim Bracket	\$22.40
**6190	Unitrol® Soffit Plate Support Bracket	\$22.40
6191	Unitrol® Wide Frame Reinforcing Kit	\$31.00
6890	Narrow Frame Support Bracket	\$22.40
6891	Clearance/Support Blade Stop	\$22.40

*No charge when ordered with closer.

**Furnished standard with all Parallel Arm Unitrols, no extra.

When ordering 6191 in place of 6190, no extra.



ASSA ABLOY

7900/7970 Series Overhead Concealed Closers

7900/7970 Series

SIZED AND MULTI-SIZED UNITS AVAILABLE

7900 SERIES OVERHEAD CONCEALED CLOSERS - Specify Hand

(4 per case)

NON-HOLD OPEN

MODEL NUMBER	PRODUCT DESCRIPTION	APPROX. SHIPPING WEIGHT (lbs)	LIST PRICE
7900	Overhead Concealed Closer with Dress Plate, size 1-6 spring	12	\$470.00
7904	Overhead Concealed Closer with Dress Plate, size 4 spring	12	\$470.00
7905	Overhead Concealed Closer with Dress Plate, size 5 spring	12	\$470.00
7906	Overhead Concealed Closer with Dress Plate, size 6 spring	12	\$470.00

HOLD OPEN

MODEL NUMBER	PRODUCT DESCRIPTION	APPROX. SHIPPING WEIGHT (lbs)	LIST PRICE
7900H	Overhead Concealed Closer with Dress Plate, size 1-6 spring	12	\$494.00
7904H	Overhead Concealed Closer with Dress Plate, size 4 spring	12	\$494.00
7905H	Overhead Concealed Closer with Dress Plate, size 5 spring	12	\$494.00
7906H	Overhead Concealed Closer with Dress Plate, size 6 spring	12	\$494.00

7970 SERIES OVERHEAD CONCEALED SECURITY CLOSERS - Specify Hand

(4 per case)

NON-HOLD OPEN

MODEL NUMBER	PRODUCT DESCRIPTION	APPROX. SHIPPING WEIGHT (lbs)	LIST PRICE
7970	Security Closer with Security Plate and Torx®, size 1-6 spring	12	\$562.00
7974	Security Closer with Security Plate and Torx®, size 4 spring	12	\$562.00
7975	Security Closer with Security Plate and Torx®, size 5 spring	12	\$562.00
7976	Security Closer with Security Plate and Torx®, size 6 spring	12	\$562.00
7970DPS	Security Closer with Security Plate, Torx® and DPS, size 1-6 spring	12	\$630.00
7974DPS	Security Closer with Security Plate, Torx® and DPS, size 4 spring	12	\$630.00
7975DPS	Security Closer with Security Plate, Torx® and DPS, size 5 spring	12	\$630.00
7976DPS	Security Closer with Security Plate, Torx® and DPS, size 6 spring	12	\$630.00

Security Closers (7970 Series) are 50% off list only unless special factory quotation applies.

Security Closers are excluded from buying programs.

OPTIONS

DA	Delayed Action suffix "DA" to model number	Add \$29.00
EBC	Enhanced BackCheck suffix "EBC" to model number	Add \$21.00
7900FB	Fire Block	Add \$49.00
7970FB	Fire Block	Add \$49.00
7970DPSFB	Fire Block	Add \$49.00

Note: Butts and Pivots not furnished. Specify "B", "CP", or "OP" when requesting templates.

7200 Electromechanical Closers



7210 Shown

RIGID ARM SLIDE TRACK - Specify Size 3 thru 5 - Specify Hand

(1 per case)

MODEL NUMBER	PRODUCT DESCRIPTION	APPROX. SHIPPING WEIGHT (lbs)	LIST PRICE
7210MPI	Support Unit - Infinite	16	\$776.00
7210MPDI	Master Unit - Infinite	18	\$1,565.00
7210MPSI	Slave Unit - Infinite	16	\$776.00
7210RFI	Executive™ Dr. Holder/Release - Infinite	16	\$1,111.00
7210MPS	Support Unit - Selective	16	\$805.00
7210MPDS	Master Unit - Selective	18	\$1,594.00
7210MPSS	Slave Unit - Selective	16	\$805.00
7210RFS	Executive™ Dr. Holder/Release - Selective	16	\$1,140.00

DOUBLE LEVER ARM - 11" MAIN ARM - Specify Size 3 thru 5 - Specify Hand

(1 per case)

MODEL NUMBER	PRODUCT DESCRIPTION	APPROX. SHIPPING WEIGHT (lbs)	LIST PRICE
7220MPI	Support Unit - Infinite	16	\$776.00
7220MPDI	Master Unit - Infinite	18	\$1,565.00
7220MPSI	Slave Unit - Infinite	16	\$776.00
7220RFI	Executive™ Dr. Holder/Release - Infinite	16	\$1,111.00
7220MPS	Support Unit - Selective	16	\$805.00
7220MPDS	Master Unit - Selective	18	\$1,594.00
7220MPSS	Slave Unit - Selective	16	\$805.00
7220RFS	Executive™ Dr. Holder/Release - Selective	16	\$1,140.00

Electrified Products



ASSA ABLOY

7200 Electromechanical Closers

DOUBLE LEVER ARM - 13-1/2" MAIN ARM - Specify Size 3 thru 5 - Specify Hand

(1 per case)

MODEL NUMBER	PRODUCT DESCRIPTION	APPROX. SHIPPING WEIGHT (lbs)	LIST PRICE
7230MPI	Support Unit - Infinite	16	\$776.00
7230MPDI	Master Unit - Infinite	18	\$1,565.00
7230MPSI	Slave Unit - Infinite	16	\$776.00
7230RFI	Executive™ Dr. Holder/Release - Infinite	16	\$1,111.00
7230MPS	Support Unit - Selective	16	\$805.00
7230MPDS	Master Unit - Selective	18	\$1,594.00
7230MPSS	Slave Unit - Selective	16	\$805.00
7230RFS	Executive™ Dr. Holder/Release - Selective	16	\$1,140.00

CONNECTED FREE-SWING SLIDE TRACK - Specify Size 3 thru 5 - Specify Hand

(1 per case)

MODEL NUMBER	PRODUCT DESCRIPTION	APPROX. SHIPPING WEIGHT (lbs)	LIST PRICE
7240MPI	Support Unit - Infinite	16	\$809.00
7240MPDI	Master Unit - Infinite	18	\$1,598.00
7240MPSI	Slave Unit - Infinite	16	\$809.00
7240RFI	Executive™ Dr. Holder/Release - Infinite	16	\$1,144.00
7240MPS	Support Unit - Selective	16	\$838.00
7240MPDS	Master Unit - Selective	18	\$1,627.00
7240MPSS	Slave Unit - Selective	16	\$838.00
7240RFS	Executive™ Dr. Holder/Release - Selective	16	\$1,173.00

Electrified Products

7200 Electromechanical Closers



ASSA ABLOY

DOUBLE EGRESS ARM SLIDE TRACK - Specify Size 3 thru 5

(1 per case)

MODEL NUMBER	PRODUCT DESCRIPTION	APPROX. SHIPPING WEIGHT (lbs)	LIST PRICE
7250MPI	Support Unit - Infinite	16	\$818.00
7250MPDI	Master Unit - Infinite	18	\$1,607.00
7250MPSI	Slave Unit - Infinite	16	\$818.00
7250RFI	Executive™ Dr. Holder/Release - Infinite	16	\$1,153.00
7250MPS	Support Unit - Selective	16	\$847.00
7250MPDS	Master Unit - Selective	18	\$1,636.00
7250MPSS	Slave Unit - Selective	16	\$847.00
7250RFS	Executive™ Dr. Holder/Release - Selective	16	\$1,182.00

OVERHEAD CONCEALED - Specify Size 4 thru 6

(1 per case)

MODEL NUMBER	PRODUCT DESCRIPTION	APPROX. SHIPPING WEIGHT (lbs)	LIST PRICE
7290MPI	Support Unit - Infinite	16	\$776.00
7290MPS	Support Unit - Selective	16	\$805.00
7290RFI	Executive™ Dr. Holder/Release - Infinite	16	\$1,111.00
7290RFS	Executive™ Dr. Holder/Release - Selective	16	\$1,140.00

ACCESSORIES - 7220/7230 SERIES ONLY

MODEL NUMBER	PRODUCT DESCRIPTION	APPROX. SHIPPING WEIGHT (lbs)	LIST PRICE
7298	Decorative Back Plate	3	\$37.00
7299	Decorative Back Plate	3	\$37.00

Electrified Products



P7705PTD Shown

Electrified Products

POWER TRACK® 7705 OR P7705 CLOSER-HOLDERS

(1 per case)

MODEL NUMBER	PRODUCT DESCRIPTION	APPROX. SHIPPING WEIGHT (lbs)	LIST PRICE
7705PTD, P7705PTD	Master Unit	12	\$1,364.00
7705PTS, P7705PTS	Slave Unit	11	\$608.00
7705PT, P7705PT	Support Unit	11	\$608.00

OPTION

DE	Double Egress Arms suffix "DE" to model number (hinge side only). Handed.	\$42.00
----	---	---------

24 Volt is standard; 120 Volt available at no extra charge.



6960 Shown

Electrified Products

SLIDE TRACK ARMS (PULL SIDE)

(1 per case)

MODEL NUMBER	PRODUCT DESCRIPTION	APPROX. SHIPPING WEIGHT (lbs)	LIST PRICE
6910R	Low Energy Operator - Right Hand	26	\$3,947.00
6910L	Low Energy Operator - Left Hand	26	\$3,947.00
6910R-RF1	Low Energy Operator w/Radio Frequency - RH	26	\$4,128.00
6910L-RF1	Low Energy Operator w/Radio Frequency - LH	26	\$4,128.00
6910DMY	Dummy Unit	16	\$741.00

DOUBLE LEVER ARMS, STANDARD DUTY - TO 110° (PUSH SIDE)

(1 per case)

MODEL NUMBER	PRODUCT DESCRIPTION	APPROX. SHIPPING WEIGHT (lbs)	LIST PRICE
6920R	Low Energy Operator - Right Hand	26	\$3,788.00
6920L	Low Energy Operator - Left Hand	26	\$3,788.00
6920R-RF1	Low Energy Operator w/Radio Frequency - RH	26	\$3,969.00
6920L-RF1	Low Energy Operator w/Radio Frequency - LH	26	\$3,969.00
6920DMY	Dummy Unit	16	\$582.00

OPTIONS: SEE PAGE 49



ASSA ABLOY

PowerMatic®

DOUBLE LEVER ARMS, STANDARD DUTY - TO 180° (PUSH SIDE)

(1 per case)

MODEL NUMBER	PRODUCT DESCRIPTION	APPROX. SHIPPING WEIGHT (lbs)	LIST PRICE
6930R	Low Energy Operator - Right Hand	26	\$3,788.00
6930L	Low Energy Operator - Left Hand	26	\$3,788.00
6930R-RF1	Low Energy Operator w/Radio Frequency - RH	26	\$3,969.00
6930L-RF1	Low Energy Operator w/Radio Frequency - LH	26	\$3,969.00
6930DMY	Dummy Unit	16	\$582.00

DOUBLE EGRESS ARMS, STANDARD DUTY - TO 110° (PULL SIDE)

(1 per case)

MODEL NUMBER	PRODUCT DESCRIPTION	APPROX. SHIPPING WEIGHT (lbs)	LIST PRICE
6950R	Low Energy Operator - Right Hand	26	\$3,989.00
6950L	Low Energy Operator - Left Hand	26	\$3,989.00
6950R-RF1	Low Energy Operator w/Radio Frequency - RH	26	\$4,169.00
6950L-RF1	Low Energy Operator w/Radio Frequency - LH	26	\$4,169.00
6950DMY	Dummy Unit	16	\$783.00

OPTIONS: SEE PAGE 49

Electrified Products

DOUBLE LEVER ARMS, H.D. 2-1/4" TO 4-3/4" REVEALS (PUSH SIDE)

(1 per case)

MODEL NUMBER	PRODUCT DESCRIPTION	APPROX. SHIPPING WEIGHT (lbs)	LIST PRICE
6960R	Low Energy Operator - Right Hand	26	\$3,947.00
6960L	Low Energy Operator - Left Hand	26	\$3,947.00
6960R-RF1	Low Energy Operator w/Radio Frequency - RH	26	\$4,128.00
6960L-RF1	Low Energy Operator w/Radio Frequency - LH	26	\$4,128.00
6960DMY	Dummy Unit	16	\$741.00

DOUBLE LEVER ARMS, H.D. 4-13/16" TO 7-3/8" REVEALS (PUSH SIDE)

(1 per case)

MODEL NUMBER	PRODUCT DESCRIPTION	APPROX. SHIPPING WEIGHT (lbs)	LIST PRICE
6970R	Low Energy Operator - Right Hand	26	\$3,947.00
6970L	Low Energy Operator - Left Hand	26	\$3,947.00
6970R-RF1	Low Energy Operator w/Radio Frequency - RH	26	\$4,128.00
6970L-RF1	Low Energy Operator w/Radio Frequency - LH	26	\$4,128.00
6970DMY	Dummy Unit	16	\$741.00

OPTIONS

D	Drop Plate suffix "D" to model number (specify hand) (6920, 6930, 6960, 6970 series only)	Add \$99.00
	For reveals greater than 3-3/8" (6950 only)	Add \$159.00

DMY Units furnished with 7500 series closer body.
220 Volt Units available; consult factory for pricing.

Electrified Products



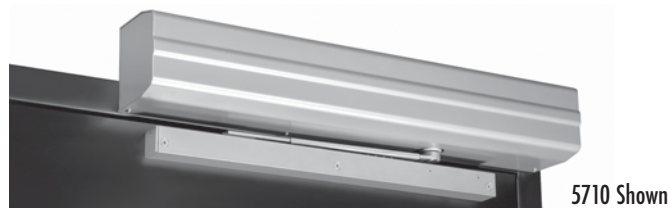
ASSA ABLOY

PowerMatic® Accessories

POWERMATIC® ACCESSORIES

MODEL NUMBER	PRODUCT DESCRIPTION	LIST PRICE
660	Door Switch - 4" x 4" Face Plate - Stainless Steel	\$297.00
661	Door Switch - 4" x 4" Face Plate - Blue Powder Coat	\$328.00
662	Door Switch - 1-11/16" x 4-1/2" Face Plate - Blue Powder Coat	\$147.00
672	Door Switch - 1-11/16" x 4-1/2" Face Plate, Stainless Steel	\$147.00
663	Motion Sensor	\$796.00
668	Security Plate	\$29.00
574	Door Switch - 6" x 6" Face Plate, RF (433MHz)	\$293.00
685	Door Switch - 6" x 6" Face Plate, Hard Wired	\$219.00
575	Door Switch - 6" x 6" Face Plate, Hard Wired	\$212.00
576	Door Switch - 6" x 6" Face Plate, RF (433MHz)	\$293.00
687KIT	RF-1 Kit (433MHz)	\$168.00
675	Vestibule Switches - 2-1/16" x 4-1/2" Face Plates - Blue Powder Coat	\$275.00
676	Vestibule Switches - 2-1/16" x 4-1/2" Face Plates - Stainless Steel	\$275.00
577	Switch Post w/RF Transmitter (433MHz)	\$822.00
578	Switch Post (Hard Wired)	\$771.00
580	Switch Only for Switch Post, 4-1/2" x 4-1/2"	\$119.00
679	Operational Signs	\$28.00
681	Signage Kit	\$6.00
682	Signage Kit	\$29.00
572	Key Fob Transmitter (433MHz)	\$87.00
581	Single Channel Hand Held Transmitter	\$96.00
582	Two Channel Hand Held Transmitter	\$193.00
573	Transmitter Kit	\$87.00
691	Door Switch Round 6", Hard Wired	\$264.00
692	Door Switch Round 6", RF (433MHz)	\$337.00
693	Door Switch Round 6", Hard Wired	\$264.00
694	Door Switch Round 6", RF (433MHz)	\$337.00
697	Touchless Door Switch	\$320.00

Electrified Products



5710 Shown

SLIDE TRACK ARMS (PULL SIDE)

MODEL NUMBER	PRODUCT DESCRIPTION	APPROX. SHIPPING WEIGHT (lbs)	LIST PRICE
5710	Low Energy Operator, closer sizes 3-6	20	\$2,331.00
5711	Low Energy Operator, closer sizes 1-4	20	\$2,331.00
5710-RF1	Low Energy Operator w/ Radio Frequency, closer sizes 3-6	20	\$2,691.00
5711-RF1	Low Energy Operator w/ Radio Frequency, closer sizes 1-4	20	\$2,691.00

DOUBLE LEVER ARMS (PUSH SIDE)

MODEL NUMBER	PRODUCT DESCRIPTION	APPROX. SHIPPING WEIGHT (lbs)	LIST PRICE
5730	Low Energy Operator, closer sizes 3-6	20	\$2,331.00
5731	Low Energy Operator, closer sizes 1-4	20	\$2,331.00
5730-RF1	Low Energy Operator w/ Radio Frequency, closer sizes 3-6	20	\$2,691.00
5731-RF1	Low Energy Operator w/ Radio Frequency, closer sizes 1-4	20	\$2,691.00

UNIVERSAL UNIT (INCLUDES PULL AND PUSH SIDE ARMS)

MODEL NUMBER	PRODUCT DESCRIPTION	APPROX. SHIPPING WEIGHT (lbs)	LIST PRICE
5740	Low Energy Operator, closer sizes 3-6	21	\$2,357.00
5741	Low Energy Operator, closer sizes 1-4	21	\$2,357.00
5740-RF1	Low Energy Operator w/ Radio Frequency, closer sizes 3-6	21	\$2,717.00
5741-RF1	Low Energy Operator w/ Radio Frequency, closer sizes 1-4	21	\$2,717.00

ACCESSORIES

MODEL NUMBER	PRODUCT DESCRIPTION	LIST PRICE
663	Motion Sensor	\$796.00
685	Door Switch - 6" x 6", Hard Wired	\$219.00
574	Door Switch - 6" x 6", Radio Frequency	\$293.00
575	Door Switch - 6" x 6", Hard Wired	\$212.00
576	Door Switch - 6" x 6", Radio Frequency	\$293.00
572	Key FOB	\$87.00
581	Single Channel Hand Held Transmitter	\$96.00
582	Two Channel Hand Held Transmitter	\$193.00
571KIT	Radio Frequency (RF1) Kit	\$360.00
5790	Sample Unit Mounted (includes 5700MKIT)	\$2,288.00
5700MKIT	Display Mounting Kit	\$289.00

Electrified Products



ASSA ABLOY

Door Closer Bodies Only

DOOR CLOSER BODIES ONLY

MODEL NUMBER	PRODUCT DESCRIPTION	LIST PRICE
1601LAP	1601 Door Closer Body	\$119.00
1601BFLAP	1601BF Door Closer Body	\$119.00
160XBCLAP	1602BC/1606BC Door Closer Bodies	\$119.00
160XBCSSLAP	1602BCSS/1606BCSS Door Closer Bodies	\$238.00
1601SSLAP	1601SS Door Closer Body	\$238.00
1601BFSSLAP	1601BFSS Door Closer Body	\$238.00
170XBCLAP	1701BC/1704BC Door Closer Bodies	\$109.00
7500LAP	7500 Door Closer Body	\$240.00
7500SSLAP	7500SS Corrosion Resistant Door Closer Body	\$440.00
770XLAP	7702/7706 Door Closer Bodies	\$240.00
78B/DLAP*	78 Door Closer Body - Size 2/4	\$371.00
78E/FLAP*	78 Door Closer Body - Size 5/6	\$371.00
810XLAP	8102/8106 Door Closer Bodies	\$171.00
810XLAP	8302/8306 Door Closer Bodies	\$171.00
810XLAP	8502/8506 Door Closer Bodies	\$171.00
8101LAP	8301 Door Closer Body	\$171.00
8101LAP	8501 Door Closer Body	\$171.00
930XBCLAP	9302BC/9305BC Door Closer Bodies	\$70.00
790XLAP	7900 Door Closer Bodies	\$262.00
797XLAP	7970 Security Door Closer Bodies	\$342.00
797XDPSLAP	7970DPS Security Door Closer Bodies	\$484.00

OPTION

DA	Delayed Action suffix "DA" to model number	Add \$29.00
----	--	-------------

"X" in catalog number - specify closer size.

*Specify Hand.

Optional Fasteners



ASSA ABLOY

SN, SNB, TBGN - 4 per pack

MODEL NUMBER	PRODUCT DESCRIPTION	LIST PRICE
SN-134	Sex Nuts Only 1-3/4" Door	\$4.00*
SN-214	Sex Nuts Only 2-1/4" Door	\$40.00*
SNB134-38	Sex Nuts and Bolts 1-3/4" Door - 1600, 8000 Series Closer	\$10.60*
SNB200-38	Sex Nuts and Bolts 2" Door - 1600, 8000 Series Closer	\$10.60*
SNB214-38	Sex Nuts and Bolts 2-1/4" Door - 1600, 8000 Series Closer	\$54.00*
SNB134-47	Sex Nuts and Bolts 1-3/4" Door - 7500/7700 Series Closer	\$10.60*
SNB200-47	Sex Nuts and Bolts 2" Door - 7500/7700 Series Closer	\$10.60*
SNB214-47	Sex Nuts and Bolts 2-1/4" Door - 7500/7700 Series Closer	\$54.00*
SN-134SS	Stainless Steel Sex Nuts Only for 1-3/4" Door	\$50.00
SNB134SS-38	Stainless Steel Sex Nuts and Bolts for 1-3/4" Door - 1600BCSS or 1601SS Series	\$54.00
SNB134SS-47	Stainless Steel Sex Nuts and Bolts for 1-3/4" Door - 7500SS Series	\$54.00
TBGN138-38	Through-Bolts & Grommet Nuts 1-3/8" Door - 1600, 8000 Series Closer	\$7.70
TBGN134-38	Through-Bolts & Grommet Nuts 1-3/4" Door - 1600, 8000 Series Closer	\$7.70
TBGN214-38	Through-Bolts & Grommet Nuts 2-1/4" Door - 1600, 8000 Series Closer	\$7.70
TBGN138-47	Through-Bolts & Grommet Nuts 1-3/8" Door - 7500/7700 Series Closer	\$7.70
TBGN134-47	Through-Bolts & Grommet Nuts 1-3/4" Door - 7500/7700 Series Closer	\$7.70

Note: Sex Nuts furnished standard with PR, CLP, CPS and UNI arms.

*For PLATED STEEL SEX NUTS or SEX NUTS and BOLTS add \$19.00 to list price.

Parts

TORX®

Model Number	Product Description	LIST PRICE
TX38	Torx® Screw Pack - 8000 NHO Series	\$29.00
PRTX38	Torx® Screw Pack - 8000 Series, Parallel Rigid, CloserPlus® or CloserPlus Spring™ Arms	\$26.00
RTX38	Torx® Screw Pack - 8000 Series, Regular Rigid Heavy-Duty Arm	\$22.00
UNITX38	Torx® Screw Pack - 8000 Series, Unitrol® Arm	\$26.00
TX47	Torx® Screw Pack - 7500/7700 NHO Series	\$31.00
PRTX47	Torx® Screw Pack - 7500/7700 Series, Parallel Rigid, CloserPlus® or CloserPlus Spring™ Arms	\$29.00
RTX47	Torx® Screw Pack - 7500/7700 Series, Regular Rigid Heavy-Duty Arm	\$26.00
UNITX47	Torx® Screw Pack - 7500/7700 Series, Unitrol® Arm	\$29.00

Note: Torx Tool Kit see page 12.



ASSA ABLOY

Arms and Arm Assemblies (Parts)
Series 1600BC/1601, 7500/7700, 8000, 9300BC

MODEL NUMBER	PRODUCT DESCRIPTION	LIST PRICE
7701-1	Regular Arm Assembly, Non-Hold Open	\$60.00
7701-1M	Main Arm Assembly	\$31.00
7701-111	Secondary Arm Assembly	\$33.00
7701-1W	Arm Assembly Less Rod & Shoe	\$48.00
7701-11	Rod & Shoe Assembly	\$19.00
7701-1A	J Top Jamb Arm Assembly, Non-Hold Open	\$60.00
7701-1M	Main Arm Assembly	\$31.00
7701-121	Secondary Arm Assembly	\$33.00
7701-1W	Arm Assembly Less Rod & Shoe	\$48.00
7701-11A	Rod & Shoe Assembly	\$19.00
7701-1B	JL Top Jamb Arm Assembly, Non-Hold Open	\$60.00
7701-2M	Main Arm Assembly	\$31.00
7701-131	Secondary Arm Assembly	\$33.00
7701-2W	Arm Assembly Less Rod & Shoe	\$48.00
7701-11B	Rod & Shoe Assembly	\$19.00
*7701-5	Parallel Arm Assembly w/ 1618 Soffit Plate, Non-Hold Open	\$60.00
7701-1M	Main Arm Assembly	\$31.00
*7701-115	Secondary Arm Assembly	\$33.00
7701-1W	Arm Assembly Less Rod & Soffit Plate	\$48.00
*7701-15	Rod & 1618 Soffit Plate Assembly	\$19.00
**7701-5A	Parallel Arm Assembly w/ 1618 Soffit Plate, Non-Hold Open	\$60.00
7701-1M	Main Arm Assembly	\$31.00
**7701-115A	Secondary Arm Assembly	\$33.00
7701-1W	Arm Assembly Less Rod & Soffit Plate	\$48.00
**7701-15A	Rod & 1618 Soffit Plate Assembly	\$19.00

*7500/7700 Series Only.

**180° door swing using special template for doors hung on 6" to 8" wide throw hinges.

Parts

Arms and Arm Assemblies (Parts)
Series 1600BC/1601, 7500/7700, 8000, 9300BC



ASSA ABLOY

MODEL NUMBER	PRODUCT DESCRIPTION	LIST PRICE
*7701-6	Parallel Arm Assembly w/ 1618A Soffit Plate, Non-Hold Open	\$60.00
7701-1M	Main Arm Assembly	\$31.00
*7701-116	Secondary Arm Assembly	\$33.00
7701-1W	Arm Assembly Less Rod & Soffit Plate	\$48.00
*7701-16	Rod & 1618A Soffit Plate Assembly	\$19.00
*7701-6A	Parallel Arm Assembly w/ 1618A Soffit Plate, Non-Hold Open	\$60.00
7701-1M	Main Arm Assembly	\$31.00
**7701-116A	Secondary Arm Assembly	\$33.00
7701-1W	Arm Assembly Less Rod & Shoe	\$48.00
**7701-16A	Rod & Shoe Assembly	\$19.00
7701-3	Regular Arm Assembly, Hold Open	\$86.00
7701-1M	Main Arm Assembly	\$31.00
7701-113	Secondary Arm Assembly	\$59.00
7701-3W	Main Arm & Rod Less Holder Shoe Assembly	\$48.00
7701-13	Holder Shoe & Loop Assembly	\$42.00
7701-31	Adjusting Arm Assembly	\$10.40
7701-3A	J Top Jamb Arm Assembly, Hold Open	\$86.00
7701-1M	Main Arm Assembly	\$31.00
7701-123	Secondary Arm Assembly	\$59.00
7701-3WA	Main Arm & Rod Assembly	\$48.00
7701-13	Holder Shoe Assembly	\$42.00
7701-31A	Adjusting Arm Assembly	\$10.40
7701-3B	JL Top Jamb Arm Assembly, Hold Open	\$86.00
7701-2M	Main Arm Assembly	\$31.00
7701-133	Secondary Arm Assembly	\$59.00
7701-3WB	Main Arm & Rod Less Holder Shoe Assembly	\$48.00
7701-13	Holder Shoe Assembly	\$42.00
7701-31B	Adjusting Arm Assembly	\$10.40
7701-8	Parallel Arm Assembly, Hold Open	\$86.00
7701-1M	Main Arm Assembly	\$31.00
7701-118	Secondary Arm Assembly w/1628H Soffit	\$59.00
7701-3W	Main Arm & Rod Assembly	\$48.00
7701-18	Holder Shoe & Loop Assembly w/ 1628H Soffit Plate	\$42.00
7701-31	Adjusting Rod Assembly	\$10.40

*1600BC/1601, 8000, 9300BC Series Only.

**180° door swing using special template for doors hung on 6" or 8" wide throw hinges.

Parts



ASSA ABLOY

**Arms and Arm Assemblies (Parts)
Series 1600BC/1601, 7500/7700,
8000 (Cont'd) and Series 1700BC**

MODEL NUMBER	PRODUCT DESCRIPTION	LIST PRICE
7701-25	Reg & Parallel Arm NHO Tri-Pkg w/1618 soffit (7500/7700 series)	\$60.00
7701-26	Regular & Parallel Arm NHO Tri-Pkg w/1618A soffit (all other series)	\$60.00
7701-AS	Arm Shoe Assembly	\$12.10
7701-ES	Elbow Screw and Washer Assembly	\$4.70
7701-HSS	Set Screw HO Arm	\$4.40
7701-HS	Hex Screw for adjusting arm and washer	\$0.80
7701-MAS	Main Arm Screw	\$4.40

MISCELLANEOUS PARTS

MODEL NUMBER	PRODUCT DESCRIPTION	LIST PRICE
1543R	Jackscrew - Right Hand	\$7.30
1543L	Jackscrew - Left Hand	\$7.30
455	Locknut (holder loop to bracket)	\$6.80
1554	Friction Disc (holder loop)	\$4.10

LOW PROFILE ARMS & ARM PARTS FOR 1680BC, 1681, 7580, 7780, 8080 SERIES

MODEL NUMBER	PRODUCT DESCRIPTION	LIST PRICE
7780-1	Regular Arm Low Profile Assembly, Non-Hold Open	\$60.00
7780-1MR	Main Arm & Adjusting Rod Assembly	\$48.00
7780-1TS	Tube and Shoe Assembly	\$19.00
7780-5	Parallel Arm Low Profile Assembly w/ 1618 Soffit, Non-Hold Open	\$60.00
7780-1MR	Main Arm & Adjusting Rod Assembly	\$48.00
7780-5TS	Tube and Soffit 1618 Assembly	\$19.00
7780-6	Parallel Arm Low Profile Assembly w/ 1618A Soffit, Non-Hold Open	\$60.00
7780-1MR	Main Arm & Adjusting Rod Assembly	\$48.00
7780-6TS	Tube & Shoe/Soffit Rod Assembly (1618A)	\$19.00
7780-25	Low Profile Non-Hold Open Tri-Pkg Assembly (7580/7780)	\$60.00
7780-26	Low Profile Non-Hold Open Tri-Pkg Assembly (1680BC/1681, 8080)	\$60.00
7701-AS	Arm Shoe Assembly	\$12.10
7701-HSS	Hold Open Set Screw	\$4.40
7701-HS	Hex Screw	\$0.80

ARMS FOR 1700BC SERIES

MODEL NUMBER	PRODUCT DESCRIPTION	LIST PRICE
1700-1	Non-Hold Open Arm Assembly	\$36.00
1700-3	Hold Open Arm Assembly	\$52.00

CloserPlus® Arms & Assemblies (Parts)
CloserPlus Spring™ Arms & Assemblies
Rigid Arms (Parts)



SERIES CLP1601, CLP1600BC, CLP7500, CLP7700, CLP8000
 SERIES CLP1601T, CLP1600BCT, CLP7500T, CLP7700T, CLP8000T

MODEL NUMBER	PRODUCT DESCRIPTION	LIST PRICE
6770-5	Stop Arm Assembly, Non-Hold Open	\$95.00
6870T-8	Holder/Stop Arm Assembly (Hold Open)	\$129.00
6770P	Hole Plug	\$6.80
6770S	Removable Stop	\$6.80

SERIES CPS1601, CPS1600BC, CPS7500, CPS7700, CPS8000
 SERIES CPS1601T, CPS1600BCT, CPS7500T, CPS7700T, CPS8000T

MODEL NUMBER	PRODUCT DESCRIPTION	LIST PRICE
CPS6770-5	Stop Arm Assembly w/ Spring (Non-Hold Open)	\$193.00
CPS6870T-8	Holder/Stop Arm Assembly w/ Spring (Hold Open)	\$226.00
6770P	Hole Plug	\$6.80
CPSK6770	Complete Kit	\$96.00

SERIES RIGID ARM ASSEMBLIES 1600, 7500/7700, 8000 SERIES - NON-HOLD OPEN

MODEL NUMBER	PRODUCT DESCRIPTION	LIST PRICE
R7701-1	Regular Rigid Heavy-Duty Arm NHO, 7500/7700, 8000 Series	\$89.00
PR7701-5	Parallel Rigid Arm NHO 1600BC/1601, 7500/7700, 8000 Series	\$72.00
PR7701-8R	Parallel Rigid Arm HO 78-B/F Series, Right Hand	\$98.00
PR7701-8L	Parallel Rigid Arm HO 1600BC/1601, 7500/7700, 8000 Series, Left Hand	\$98.00
PRO7701-5	Parallel Rigid Non-Hold Open with Offset Soffit Plate	\$87.00

Parts



ASSA ABLOY

Stainless Steel Arms & Assemblies (Parts) 7570, 7770 Security Arm & Assemblies (Parts)

SERIES 1600BCSS, 1601SS, 7500SS STAINLESS STEEL ARMS & ASSY

MODEL NUMBER	PRODUCT DESCRIPTION	LIST PRICE
7701SS-1	Regular Arm Assembly (SS), Non-Hold Open	\$205.00
7701SS-1M	Main Arm Assembly (SS)	\$106.00
7701SS-11	Rod & Shoe Assembly (SS)	\$49.90
7701SS-111	Secondary Arm Assembly (SS)	\$106.00
7701SS-1A	J Top Jamb Arm Assembly, Non-Hold Open	\$205.00
7701SS-1M	Main Arm Assembly (SS)	\$106.00
7701SS-11A	Rod & Shoe Assembly (SS)	\$49.90
7701SS-111A	Secondary Arm Assembly (SS)	\$106.00
*7701SS-6	Parallel Arm Assembly (SS), Non-Hold Open	\$205.00
7701SS-1M	Main Arm Assembly (SS)	\$106.00
7701SS-16	Rod & Shoe Assembly (SS)	\$49.90
*7701SS-116	Secondary Arm Assembly (SS)	\$106.00
7701SS-AS	Arm Shoe Assembly	\$28.00
7701SS-ES	Screw and Washer Assembly	\$5.30

*1601SS and 7500SS only.

SERIES 7570, 7770 SECURITY ARMS & PARTS

MODEL NUMBER	PRODUCT DESCRIPTION	LIST PRICE
*7771-1	Regular Rigid (Security) Arm Assembly, Non-Hold Open	\$118.00
*7771-5	Parallel Rigid (Security) Arm Assembly, Non-Hold Open	\$130.00
*CLP7771-5	Parallel Stop (Security) Arm Assembly, Non-Hold Open	\$153.00
*CLP7771-8T	Parallel Holder/Stop (Security) Arm Assembly	\$187.00
*CPS7771-5	Parallel Stop (Security) Arm Assembly w/ Spring, Non-Hold Open	\$251.00
*CPS7771-8T	Parallel Holder/Stop (Security) Arm Assembly w/ Spring	\$284.00
*7771ST-1A	Arm Assembly NHO	\$75.00
*7771ST-1T	Pull Side Slide Track Assembly, Non-Hold Open	\$123.00
*7771ST-5T	Push Side Slide Track Assembly, Non-Hold Open	\$123.00
7770MRR	Security Cover, Regular Arm, Right Hand	\$89.00
7770MRL	Security Cover, Regular Arm, Left Hand	\$89.00
7770MPR	Security Cover, Parallel Arm, Right Hand	\$89.00
7770MPL	Security Cover, Parallel Arm, Left Hand	\$89.00
7786	Narrow Top Rail Drop Plate	\$53.00
7778	Narrow Top Rail Drop Plate	\$54.00
2019S	Standard Spacer Block	\$5.20
2019L	Flush Rabbeted Transom Angle Bracket	\$16.60
6890	Narrow Frame Support Bracket	\$22.40
6891	Clearance/Support Blade Stop	\$22.40
7740SLD	Assembly Pack	\$51.00
P77MT	Metal Template	\$33.00

*Furnished standard with TORX® security screws. Sex Nuts not included.

UNITROL® ARMS FOR 1601, 1600BC, 7500, 7700, 8000 SERIES

MODEL NUMBER	PRODUCT DESCRIPTION	LIST PRICE
6100-11	Arm Assembly, Non-Hold Open, Door Width 28" to 32"	\$204.00
6100-13	Arm Assembly, Non-Hold Open, Door Width 33" to 41"	\$204.00
6100-14	Arm Assembly, Non-Hold Open, Door Width 42" to 48"	\$204.00
6100-1	Arm Assembly, Hold Open, Door Width 28" to 32"	\$243.00
6100-3	Arm Assembly, Hold Open, Door Width 33" to 41"	\$243.00
6100-4	Arm Assembly, Hold Open, Door Width 42" to 48"	\$243.00

UNITROL® ARMS FOR 7570 & 7770 SECURITY CLOSERS

MODEL NUMBER	PRODUCT DESCRIPTION	LIST PRICE
6100-11	Arm Assembly, Non-Hold Open, Door Width 28" to 32"	\$204.00
6100-13	Arm Assembly, Non-Hold Open, Door Width 33" to 41"	\$204.00
6100-14	Arm Assembly, Non-Hold Open, Door Width 42" to 48"	\$204.00

UNITROL® ARMS FOR 78B/F SERIES

MODEL NUMBER	PRODUCT DESCRIPTION	LIST PRICE
6130-17	Arm Assembly, Non-Hold Open, Door Width 28" to 32"	\$204.00
6130-18	Arm Assembly, Non-Hold Open, Door Width 33" to 41"	\$204.00
6130-19	Arm Assembly, Non-Hold Open, Door Width 42" to 48"	\$204.00
6130-7	Arm Assembly, Hold Open, Door Width 28" to 32"	\$243.00
6130-8	Arm Assembly, Hold Open, Door Width 33" to 41"	\$243.00
6130-9	Arm Assembly, Hold Open, Door Width 42" to 48"	\$243.00

TOP JAMB UNITROL® ARMS FOR 1601, 1600BC, 7500, 7700, 8000 SERIES

MODEL NUMBER	PRODUCT DESCRIPTION	LIST PRICE
J6100-4	Arm Assembly, NHO Frame Reveals 2-1/8" to 3-1/4"	\$220.00
J6200-4	Arm Assembly, NHO Frame Reveals 1/2" to 2"	\$220.00
J6400-4	Arm Assembly, NHO Frame Reveals 3-3/8" to 4-1/4"	\$220.00
J6500-41	Arm Assembly, NHO Frame Reveals 4-3/8" to 5-3/8"	\$220.00
J6500-42	Arm Assembly, NHO Frame Reveals 5-1/2" to 6-3/8"	\$220.00
J6500-43	Arm Assembly, NHO Frame Reveals 6-1/2" to 7-3/8"	\$220.00
J6600-4	Arm Assembly, NHO Frame Reveals 0" to 3/8"	\$220.00
J6100-7	Arm Assembly, HO Frame Reveals 2-1/8" to 3-1/4"	\$264.00
J6200-7	Arm Assembly, HO Frame Reveals 1/2" to 2"	\$264.00
J6400-7	Arm Assembly, HO Frame Reveals 3-3/8" to 4-1/4"	\$264.00
J6500-71	Arm Assembly, HO Frame Reveals 4-3/8" to 5-3/8"	\$264.00
J6500-72	Arm Assembly, HO Frame Reveals 5-1/2" to 6-3/8"	\$264.00
J6500-73	Arm Assembly, HO Frame Reveals 6-1/2" to 7-3/8"	\$264.00
J6600-7	Arm Assembly, HO Frame Reveals 0" to 3/8"	\$264.00

Parts



ASSA ABLOY

Slide Track Assemblies and Parts

SERIES 7500ST, 7700ST, 8000ST SLIDE TRACKS INCLUDING STP

MODEL NUMBER	PRODUCT DESCRIPTION	LIST PRICE
7701ST-1T	Pull Side Slide Track Assy. NHO	\$96.00
7701ST-5T	Push Side Slide Track Assy. NHO	\$96.00
7701ST-1T180	Pull Side Slide Track Assy. NHO 180°	\$96.00
7701ST-3T	Pull Side Slide Track Assy. HO	\$147.00
7701ST-8T	Push Side Slide Track Assy. HO	\$147.00
7701ST-1A	Arm Assembly (all except STP)	\$55.00
7701STP-1A	Arm Assembly (STP only)	\$55.00
7700STEC	End Cap NHO and Hold Open (2 required)	\$3.80
7700SLD	Slider Assembly	\$51.00
7700ASR	Retaining Ring	\$1.60
7700AS	Arm Stud	\$3.60
7700ASC	Arm Stud Clip	\$4.40
7701PT-DE-1R	Double Egress Arm Assy. Right Hand	\$96.00
7701PT-DE-1L	Double Egress Arm Assy. Left Hand	\$96.00
7701ST-1ATR	Double Egress Arm Tube Assy. Right Hand	\$70.00
7701ST-1ATL	Double Egress Arm Tube Assy. Left Hand	\$70.00
7701ST-1AT	Arm Tube Assy. (all except STP)	\$29.00
7701ST-1AR	Adjusting Rod Assy. (all units)	\$29.00
7701STP-1AT	Arm Tube Assy. (STP only)	\$29.00

Parts

SERIES 7540, 7740, 8040/8050 LOW PROFILE SLIDE TRACKS

MODEL NUMBER	PRODUCT DESCRIPTION	LIST PRICE
7740ST-1T	Pull Side Slide Track Assembly, Non-Hold Open	\$96.00
7740ST-5T	Push Side Slide Track Assembly, Non-Hold Open	\$96.00
7740ST-3T	Pull Side Slide Track Assembly, Hold Open	\$123.00
7740ST-8T	Push Side Slide Track Assembly, Hold Open	\$123.00
7740ST-1A	Arm Assembly	\$55.00
7740SLD	Slider Assembly NHO	\$51.00
7740HSLD	Slider Assembly HO	\$70.00
7701ST-1AT	Arm Tube Assembly	\$29.00
7740ST-1AR	Adjusting Rod Assembly	\$29.00

78B/F Arm Assemblies and Parts



ASSA ABLOY

ARMS AND ARM ASSEMBLIES FOR 78B/F CLOSER

MODEL NUMBER	PRODUCT DESCRIPTION	LIST PRICE
B/F-1	Regular Arm Assembly, Non-Hold Open	\$60.00
B/F-1W	Main Arm Less Rod & Shoe	\$48.00
B/F-11	Rod & Shoe	\$19.00
B/F-3	Regular Arm Assembly, Hold Open 90 to 180 degrees	\$86.00
B/F-1W	Main Arm Less Rod & Shoe	\$48.00
B/F-13	Holder Shoe & Loop	\$42.00
B/F-5	Parallel Arm Assembly, Non-Hold Open	\$60.00
B/F-5W	Main Arm Less Rod & Soffit Plate	\$48.00
B/F-15	Rod and Soffit Plate	\$19.00
B/F-8	*Parallel Arm Assembly, Hold Open 90 to 180 degrees	\$86.00
B/F-8W	Main Arm & Rod Less Soffit Plate & Holder Loop Assembly	\$48.00
B/F-18	*Soffit Plate Holder & Loop Assembly	\$42.00
78PRA-5	Parallel Rigid Arm Assembly, Non-Hold Open	\$79.00
78PRA-8R	Parallel Rigid Arm Assembly, Hold Open (Right Hand)	\$107.00
78PRA-8L	Parallel Rigid Arm Assembly, Hold Open (Left Hand)	\$107.00
B/F-1M	Main Arm	\$31.00
B/F-MAS	Main Arm Screw	\$4.40
7701-HS	Hex Screw & Washer Assembly	\$0.80
7701-HSS	Square Head Set Screw	\$4.40
7701-ES	Elbow Screw	\$4.70

*Specify Hand.

PARTS FOR 78B/F CLOSERS

MODEL NUMBER	PRODUCT DESCRIPTION	LIST PRICE
24BD	B/D Spring	\$55.00
56EF	E/F Spring	\$62.00
230BC	Spring (prior to 1978 model)	\$89.00
230D	Spring (prior to 1978 model)	\$121.00
230EF	Spring (prior to 1978 model)	\$89.00
1543R	Jackscrew - Right Hand	\$7.30
1543L	Jackscrew - Left Hand	\$7.30
455	Locknut	\$6.80
1554	Friction Disc	\$4.10

Parts



ASSA ABLOY

**Parts for 7900 and 7970 Closers
Security Arm Assemblies and Parts**

SERIES 7900 OVERHEAD CONCEALED CLOSERS

MODEL NUMBER	PRODUCT DESCRIPTION	LIST PRICE
7900PK	Dress Plate Kit	\$49.00
7950-1L	Arm Assembly Non-Hold Open, Left Hand	\$79.00
7950-1R	Arm Assembly Non-Hold Open, Right Hand	\$79.00
7950-3	Arm Assembly, Hold Open	\$79.00
7950ST	Track Assembly, Non-Hold Open	\$133.00
7950STH	Track Assembly, Hold Open	\$133.00
7900SLD	Slider	\$57.00
7900SP	Complete Screw Pack	\$14.00
7950H	Hold Open Assembly	\$60.00

SERIES 7970 OVERHEAD CONCEALED SECURITY CLOSERS

MODEL NUMBER	PRODUCT DESCRIPTION	LIST PRICE
7970PK	Security Dress Plate Kit	\$55.00
7970-1L	Security Arm Assembly Left Hand	\$81.00
7970-1R	Security Arm Assembly Right Hand	\$81.00
7970ST	Security Track Assembly	\$138.00
7970SLD	Slider	\$57.00
7970SP	Complete Screw Pack	\$31.90
70TK	Torx® Tool Kit	\$106.00

Parts

SERIES 7700PT TRACK ASSEMBLIES

MODEL NUMBER	PRODUCT DESCRIPTION	LIST PRICE
PT120	Hinge Side Track Support Unit 120V	\$317.00
PT24	Hinge Side Track Support or Slave Unit, 24V	\$317.00
PPT120	Stop Side Track Support Unit 120V	\$317.00
PPT24	Stop Side Track Support Unit 24V	\$317.00
PTD24/120	Hinge Side Track Master Unit 24V or 120V	\$742.00
PPTD24/120	Stop Side Track Master Unit 24V or 120V	\$742.00
RETPT24	Hinge Side Retrofit Assembly PT-24V	\$317.00
RETPT120	Hinge Side Retrofit Assembly PT-120V	\$317.00
RETPT24	Stop Side Retrofit Assembly P-PT24V	\$317.00
RETPT120	Stop Side Retrofit Assembly P-PT120V	\$317.00

Note: Master Unit Track Assemblies includes track, slider assembly, solenoid block assembly, and detector. Hook-up box not included.
 Note: Support and Slave Unit Track Assemblies includes track, slider assembly, and solenoid block assembly. Hook-up box not included.

POWER TRACK® TRACK PARTS

MODEL NUMBER	PRODUCT DESCRIPTION	LIST PRICE
7700SLD	Slider Assembly	\$51.00
7700ASC	Slider Arm Stud Clip (included in slider assy)	\$4.40
7700STEC	Track Assembly End Cap	\$3.80
PT24SOL	Solenoid Block Assembly 24V	\$166.00
PT120SOL	Solenoid Block Assembly 120V	\$166.00

POWER TRACK® ARM COMPONENTS

MODEL NUMBER	PRODUCT DESCRIPTION	LIST PRICE
7701ST-1A	Standard Arm Assembly	\$55.00
7701ST-1AT	Adjusting Head & Tube Assembly	\$29.00
7701ST-1AR	Adjusting Rod Assembly	\$29.00
7701PT-DE-1R	Double Egress Arm Assembly RH	\$96.00
7701PT-DE-1L	Double Egress Arm Assembly LH	\$96.00
7701PT-1ATR	Adjusting Head and Tube Assembly RH	\$70.00
7701PT-1ATL	Adjusting Head and Tube Assembly LH	\$70.00
7700AS	Arm Stud	\$3.60
7700ASR	Retaining Ring	\$1.60
7700ALAS	Arm Length Adjusting Screw	\$0.80

Electrified Parts



ASSA ABLOY

Power Track® Assemblies and Parts

SERIES 7700PT, HOOK-UP BOXES AND PARTS

MODEL NUMBER	PRODUCT DESCRIPTION	LIST PRICE
PTHB24	Hook-Up Box Support Unit 24V	\$151.00
PTHB120	Hook-Up Box Support Unit 120V	\$151.00
PTDHB24	Hook-Up Box Master Unit 24V	\$209.00
PTDHB120	Hook-Up Box Master Unit 120V	\$209.00
PTSHB24	Hook-Up Box Slave Unit 24V	\$70.00
PT125V	Fuse	\$10.20
PTHBCHA	Hook-Up Box Chassis	\$6.60
PTHBCOV	Hook-Up Box Cover Kit (includes cover, straps, and screws)	\$14.00
PTSD24	Smoke Detector Board	\$275.00
PTSDCOV	Smoke Detector Cover	\$9.40
PTHBSTRAP	Hook-Up Box Mounting Strap Kit	\$8.50
PTPCB24	Hook-Up Board Support Unit 24V	\$79.00
PTPCB120	Hook-Up Board Support Unit 120V	\$79.00
PTSPCB24	Hook-Up Board Slave Unit 24V	\$38.00
PTDPCB24	Hook-Up Board Master Unit 24V	\$127.00
PTDPCB120	Hook-Up Board Master Unit 120V	\$127.00

Note: Specify finish on all hook-up boxes.
Specify finish on smoke detector cover.

Electrified Parts

CLOSER BODIES

MODEL NUMBER	PRODUCT DESCRIPTION	LIST PRICE
720XLAPI24L	Closer Body, 24V, Infinite Hold Open, Left Hand	\$484.00
720XLAPI24R	Closer Body, 24V, Infinite Hold Open, Right Hand	\$484.00
720XLAPI120L	Closer Body, 120V, Infinite Hold Open, Left Hand	\$484.00
720XLAPI120R	Closer Body, 120V, Infinite Hold Open, Right Hand	\$484.00
720XLAPS24L	Closer Body, 24V, Selective Hold Open, Left Hand	\$513.00
720XLAPS24R	Closer Body, 24V Selective Hold Open, Right Hand	\$513.00
720XLAPS120L	Closer Body, 120V, Selective Hold Open, Left Hand	\$513.00
720XLAPS120R	Closer Body, 120V, Selective Hold Open, Right Hand	\$513.00

Note: "X" in part number - specify closer size.

ELECTROMECHANICAL SLIDE TRACKS AND ARM ASSEMBLIES

MODEL NUMBER	PRODUCT DESCRIPTION	LIST PRICE
7200-1T	Slide Track Assembly for 7210, 7240, 7250	\$121.00
7210-1A	Slide Arm for 7210	\$98.00
7240-1A	Connected Free Swing Arm Assembly for 7240	\$138.00
7250-1R	Double Egress Arm, Right Hand for 7250	\$202.00
7250-1L	Double Egress Arm, Left Hand for 7250	\$202.00
7701-1A	Double Lever Arm for 7220	\$60.00
7701-1B	Double Lever Arm for 7230	\$60.00
7950-1L	Arm Assembly, Non-Hold Open, Left Hand - 7290	\$79.00
7950-1R	Arm Assembly, Non-Hold Open, Right Hand - 7290	\$79.00
7950ST	Track Assembly, Non-Hold Open - 7290	\$133.00

ELECTROMECHANICAL SLIDE TRACK AND ARM PARTS

MODEL NUMBER	PRODUCT DESCRIPTION	LIST PRICE
7700STEC	End Caps (2 required)	\$3.80
7700SLD	Slider Assembly (part of slide track assembly)	\$51.00
7700ASC	Slider Arm Stud Clip (part of slider assy)	\$4.40
7200CB	Cushion Block (part of slider assy)	\$37.00
7700AS	Arm Stud	\$3.60
7700ASR	Arm Stud Retaining Ring	\$1.60
7240SP	Screw Pack for CFS Arm (includes arm driver, spacer, arm driver pins and main arm screw)	\$34.40



ASSA ABLOY

7200 Electromechanical Parts

HOOK-UP BOARDS

MODEL NUMBER	PRODUCT DESCRIPTION	LIST PRICE
MPPCB24	Hook-Up Board 24V Support Unit MPI/MPS	\$102.00
MPPCB120	Hook-Up Board 120V Support Unit MPI/MPS	\$102.00
MPDPCB24	Hook-Up Board 24V Master Unit MPDI/MPDS	\$152.00
MPDPCB120	Hook-Up Board Master Unit 120V MPDI/MPDS	\$152.00
MPSPCB24	Hook-Up Board Slave Unit 24VDC MPSI/MPSS	\$50.00

MISCELLANEOUS PARTS

MODEL NUMBER	PRODUCT DESCRIPTION	LIST PRICE
MPSD24	Smoke Detector Board	\$400.00
PT125V	Fuse	\$10.20
7200MP	Short Cover for Support Unit	\$62.00
7200MPD	Long Cover for Master or Slave Unit	\$70.00
SHOK	Selective Hold Open Switch Assembly 24V or 120V	\$62.00
SHO	Switch 24V or 120V	\$60.00

ACCESSORIES - 7220/7230 SERIES ONLY

MODEL NUMBER	PRODUCT DESCRIPTION	APPROX. SHIPPING WEIGHT (lbs)	LIST PRICE
7298	Decorative Back Plate	3	\$37.00
7299	Decorative Back Plate	3	\$37.00

Electrified Parts

POWERMATIC® BODY PUMP AND MOTOR ASSEMBLIES

MODEL NUMBER	PRODUCT DESCRIPTION	LIST PRICE
6910LAP-R	Right Hand Assembly x ELS (6910, 6950)	\$1,950.00
6910LAP-L	Left Hand Assembly x ELS (6910, 6950)	\$1,950.00
6920LAP-R	Right Hand Assembly x ELS (6920,6930,6960,6970)	\$1,950.00
6920LAP-L	Left Hand Assembly x ELS (6920,6930,6960,6970)	\$1,950.00
6910UL	Unit Assembly Less Cover and Arm, Left Hand (Pull Side)	\$3,580.00
6910UR	Unit Assembly Less Cover and Arm, Right Hand (Pull Side)	\$3,580.00
6920UL	Unit Assembly Less Cover and Arm, Left Hand (Push Side)	\$3,580.00
6920UR	Unit Assembly Less Cover and Arm, Right Hand (Push Side)	\$3,580.00

Bodies available in 689 (aluminum) finish only.

POWERMATIC® MISCELLANEOUS PARTS

MODEL NUMBER	PRODUCT DESCRIPTION	LIST PRICE
6600L2	L2 Switch Assembly (6600/6700 units only)	\$75.00
6600ACT	L2 Switch Actuator (6600/6700 units only)	\$31.90
67003P	3 Position Switch Assembly	\$53.00
6700PCB	PC Board	\$419.00
6600-F1	Fuse (PC Board) 1.5 Amps	\$5.10
6600-F2	Fuse (120V Input) 3 Amps	\$5.10
6700L1	L1 Switch Assembly (6700 unit only)	\$16.00
6700ACT-L	L1 Switch Actuator Left Hand (6700 unit only)	\$31.90
6700ACT-R	L1 Switch Actuator Right Hand (6700 unit only)	\$31.90
6600CAP	Motor Capacitor	\$29.30
*6700ELS	ELS Upgrade Kit (6600, 6700 units only)	\$275.00
6700M	Cover	\$171.00
6700DAP	Drop Angle Bracket	\$99.00
6900ELS	ELS Repair Kit (6900 only)	\$291.00
6700SOL	Solenoid Coil	\$85.00
6600DIO	Diode	\$8.00

Electrified Parts



ASSA ABLOY

PowerMatic® Parts

POWERMATIC® ARM AND TRACK ASSEMBLIES

MODEL NUMBER	PRODUCT DESCRIPTION	LIST PRICE
6610-1	Arm and Track Assembly (6910)	\$196.00
7210-1A	Arm Assembly	\$98.00
6610-1T	Track Assembly	\$96.00
6620-1	Arm Assembly (6920)	\$200.00
6620-1W	Main Arm and Rod	\$104.00
6620-12	Adjusting Tube and Shoe	\$94.00
6630-1	Arm Assembly (6930)	\$200.00
6630-1W	Main Arm and Rod	\$104.00
6620-12	Adjusting Tube and Shoe	\$94.00
6650-1L	Arm and Track Assembly, Left Hand (6950)	\$317.00
7250-1L	Arm Assembly Left Hand	\$202.00
6610-1T	Track Assembly	\$96.00
6650-1R	Arm and Track Assembly, Right Hand (6950)	\$317.00
7250-1R	Arm Assembly Right Hand	\$202.00
6610-1T	Track Assembly	\$96.00
6660-1	Arm Assembly (6960)	\$204.00
6660-11	Rod and Snubber Assembly	\$98.00
6670-1	Arm Assembly (6970)	\$204.00
6670-11	Rod and Snubber Assembly	\$98.00

Electrified Parts

LEO® PARTS

MODEL NUMBER	PRODUCT DESCRIPTION	LIST PRICE
1601BFLAP	Closer Body, Size 1-4	\$116.00
1601LAP	Closer Body, Size 3-6	\$116.00
5700C	Chain	\$14.00
5700M	Motor Assembly	\$745.00
5700IN	Inverter	\$446.00
5700DPA	Door Position Adjustment Assembly	\$66.00
5700CM	Pinion Extension/Clutch Assembly	\$181.00
5700PB	Pillow Block	\$55.00
5700COV	Cover	\$70.00
5700SW	On/Off Switch	\$4.10
5700RS	Reed Switch	\$14.00

LEO® ARM AND TRACK ASSEMBLIES

MODEL NUMBER	PRODUCT DESCRIPTION	LIST PRICE
5710-1	Arm and Track Assembly (Pull)	\$196.00
7701ST-1A	Arm Assembly	\$55.00
7200-1T	Track Assembly	\$121.00
7701-1	Arm Assembly (Push)	\$60.00
7701-1W	Main Arm & Rod	\$48.00
7701-11A	Adjusting Tube & Shoe	\$19.00



ASSA ABLOY

**For a complete listing of products and applications
please visit our website.**

www.nortondoорcontrols.com

Or contact us at:

Norton Door Controls

3000 Highway 74 East

Monroe, NC 28112

Tel: (877) 974-2255

Fax: (800) 338-0965

Norton®, Power Track®, Unitrol®, CloserPlus®, Tri-Style®, PowerMatic® and LEO® are registered trademarks of Yale Security Inc. CloserPlus Spring™ and Executive™ are trademarks of Yale Security Inc. Other products' brand names may be trademarks or registered trademarks of their respective owners and are mentioned for reference purposes only. These materials are protected under U.S. copyright laws. All contents current at time of publication. Copyright © 2002 - 2008 Yale Security Inc. All rights reserved. Reproduction in whole or in part without the express written permission of Yale Security Inc. is prohibited.

ASSA ABLOY is the global leader in door opening solutions, dedicated to satisfying end-user needs for security, safety and convenience.