

LCN®

Fire/life safety closers/holders series



Overview

Sentronic Series LCN closers/holders combine heavy duty closers with electrically controlled hold-open functions to control fire and smoke barrier doors. Automatic detection and containment of fire and smoke are the best ways to minimize danger to life and property. Patented Sentronic door closer/holders are designed to hold swinging doors open in normal use then release and automatically close the doors under fire conditions. These products integrate into your complete fire and life safety system.

LCN's fire/life safety closers/holders series includes:

- SE Series - offers adjustable single-point hold-open function controlled by solenoid assembly located in the SE track
- ME Series - offers infinitely adjustable, multi-point hold-open function controlled by solenoid on the cylinder assembly
- SEM Series - Electromagnetic door holders work with manual door closer to provide single-point hold-open
- HSA Series - Best suited for high traffic emergency doors, this product provides easy passage for groups of pedestrians through high traffic doors with electronically controlled closer/holder

Features and benefits

- Conforms to NFPA 101 and ANSI 156.15
- 24V AC/DC or 120V AC input
- When current is interrupted, hold-open releases and door closes
- Adjustable hydraulic backcheck cushions opening swing prior to 90°
- Separate regulation of general closing speed and latching speed
- Available in wide range of powder coated finishes to blend with door and frame (SEM magnets available in aluminum and dark bronze only)
- Circuit automatically handles AC or DC input
- Can be pushed safely and easily out of hold-open
- Functions as full rack and pinion door closer when hold-open is not engaged or current is interrupted
- High strength cast iron cylinder
- Forged steel main arm and piston
- All weather fluid

Holding solenoids current draw

SE/ME

- 24V AC/DC (+10% - 15%) at 90 mA maximum
- 120V AC/DC (+10% - 15%) at 30 mA maximum

SEM (tri-volt)

- 12V DC (+10% - 15%) at 30 mA maximum
- 24V AC/DC (+10% - 15%) at 20 mA maximum
- 120V AC/DC (+10% - 15%) at 20 mA maximum

HSA

- 24V AC/DC (+10% - 15%) at 120 mA maximum

Allegion, the Allegion logo, LCN and the LCN logo are trademarks of Allegion plc, its subsidiaries and/or affiliates in the United States and other countries. All other trademarks are the property of their respective owners.

About Allegion

Allegion (NYSE: ALLE) is a global pioneer in safety and security, with leading brands like CISA®, Interflex®, LCN®, Schlage®, SimonsVoss® and Von Duprin®. Focusing on security around the door and adjacent areas, Allegion produces a range of solutions for homes, businesses, schools and other institutions. Allegion is a \$2 billion company, with products sold in almost 130 countries. For more, visit www.allegion.com.

KRYPTONITE ■ LCN ■  ■ STEELCRAFT ■ VON DUPRIN



© 2017 Allegion
010115, Rev. 08/17
www.allegion.com/us



ALLEGION™

LCN®

1450 Series

Medium duty cast aluminum
door closer



LCN quality and value, backed by
a 25-year warranty.

The 1450 Series cast aluminum closer was specially designed to deliver consistent, dependable, long-term performance in frequently-used, low-abusive traffic areas. The patent-pending LCN design, featuring the industry's most common hole pattern, is an excellent choice for a range of applications — from aftermarket replacement, to aluminum store fronts, to new construction projects — anywhere quality, reliability and value are important.

The 1450 Series also looks as good as it functions, with a standard slim line cover, optional full plastic cover or optional full metal cover, in six available standard finishes, as well as custom colors. The result is a great look with a long list of valuable features — plus LCN quality, engineering and service — all at a competitive price.

Key Features

- Cast Aluminum Body
- Patent Pending Design
- Peel-n-Stick Templates
- Universal Screw Pack
- Full Complement Bearing
- All Weather Fluid
- Adjustable Spring Size 1-6
- Non-Handed
- 25 Year Warranty

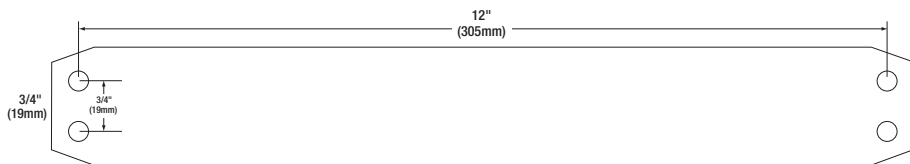
With LCN, you get the great product features you need, plus so much more.

Every 1450 Series closer we make is backed by LCN's proven history of providing the highest-quality, most reliable performance in the industry. Plus, with LCN you get the most knowledgeable, responsive customer service and the best technical support team in the business – with more than 150 years of combined experience. That's the kind of added value you can count on to meet your needs, every single time.

1450 SERIES CROSS REFERENCE	
LCN	1450
Norton	8000
Sargent	1430
Yale	3000
Dorma	8600

1450 Series Specifications

Certifications	Grade 1 - ANSI A156.4, UL/cUL, ADA, 100 Hour Salt Spray, Meets BAA - Buy American Act
Body Construction	<ul style="list-style-type: none"> Cast Aluminum Body Full Complement Bearing 1 1/4" Piston Diameter 5/8" Diameter Heat Treated Pinion Journal
Fluid	All Weather
Handing	Non-Handed
Templating	Peel-n-Stick Templates - 3/4" x 12" Mounting Hole Pattern
Size	Adjustable Spring Size 1-6
Warranty	25 Years
Fasteners	Standard Universal Screw Pack includes Self Reaming and Tapping Screws (SRT), Machine Screws, Wood Screws and Thru Bolts (Torx security and longer thru bolts optional)
Arms	<p>Standard Tri-Pack includes arms for Regular Pull Side, Top Jamb or Parallel Arm Mounting</p> <p>Optional Arms:</p> <ul style="list-style-type: none"> Hw/PA - Hold Open w/62PA (3049; 62PA) LONG - Long Arm for Deep Reveal (3077; 79LR) HLONG - Hold Open Long Arm (3049; 3048L) EDA - Extra Duty Parallel Arm (3077EDA) EDA/62G - Extra Duty Parallel Arm - Extra Clearance (3077EDA/62G) HEDA - Hold Open Extra Duty Parallel Arm (HEDA) CUSH - Cush-n-Stop (3077CNS) HCUSH - Hold Open Cush-n-Stop (3049CNS) SCUSH - Spring Cush-n-Stop (3077SCNS) SHCUSH - Spring Hold Open Cush-n-Stop (3049SCNS) REG/62A - Regular Arm-Extra Clearance (3077; 62A) Hw/62A - Hold Open - Extra Clearance (3049; 62A)
Finishes/Colors	<ul style="list-style-type: none"> Aluminum (689) Statuary Bronze (690) Light Bronze (691) Black (693) Dark Bronze (695) Brass (696) Custom colors optional
Brackets	<ul style="list-style-type: none"> 30 - Cush Shoe Support (30) 62A - Auxiliary Shoe for Parallel Mount - Extra Clearance (62A) 62PA - Auxiliary Shoe for Parallel Mount (62PA) 419 - Panel Adaptor for Parallel Mount (419)
Accessories	<ul style="list-style-type: none"> 18 - Plate for Hinge Side Mount (18) 18PA - Plate for Parallel Arm (18PA) 18FC - Plate Used with Full Cover for Pull Side and Top Jam Arm (18FC) 18PAFC - Plate Used with Full Cover for Parallel Arm (18PAFC) 61 - Blade Stop for Cush Shoe Support (61) Slim Line Plastic Cover (72); Optional Handed Metal Cover (72MC); Optional Full Plastic Cover (72FC) Optional SRI



Contact us at 877-671-7011 to consult with an LCN Representative or Technical Advisor.

Visit us at us.allegion.com/brands/lcn for product information and additional resources.

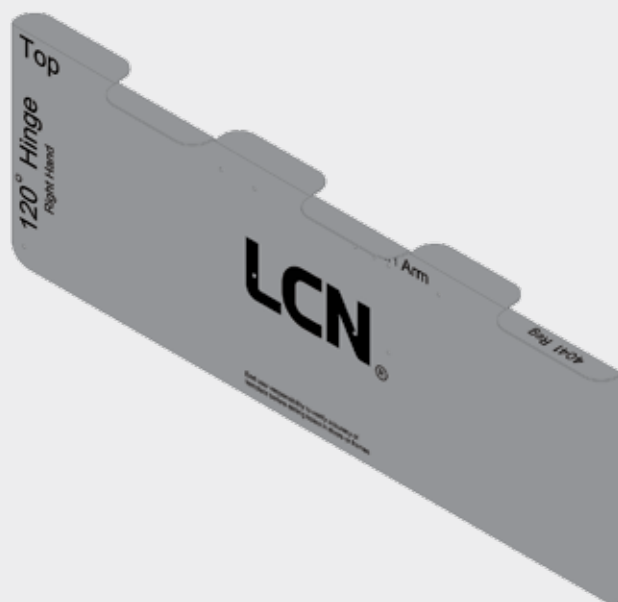
About Allegion

Allegion (NYSE: ALLE) creates peace of mind by pioneering safety and security. As a \$2 billion provider of security solutions for homes and businesses, Allegion employs more than 8,000 people and sells products in more than 120 countries across the world. Allegion comprises more than 25 global brands, including strategic brands CISA®, Interflex®, LCN®, Schlage® and Von Duprin®. For more, visit www.allegion.com.

LCN®

4000 Series

Metal templates for easy installation



Overview

Reduce installation time with more consistent and accurate pre-drilling using the LCN metal installation template. The use of the template takes the guessing out of installing a door closer by adding labeled dimensions as well as eliminating the use of a paper template that could shift during the door prep. These metal installation templates accommodate several different types of installation from pull side of the door to push side by providing easy to read labels on the template.

Features and benefits

- Reduced installation time with accurate markings on metal installation templates
- Pre-marked drilling holes on templates take the guess work out of the installation process
- More consistent installation with easy to read labeling
- Metal installation templates eliminate worry about paper template shifting

Templates and kits

There are kits available to purchase, as well as the ability to purchase a single template; each sold separately.

Description	Part number	List price
4040XP Metal template kit Four (4) template kit (includes 4040XP-107REG, -107PA, -107EDA and -107CUSH)	4040XP-3107	\$960
4040XP Metal template – REG (regular arm only)	4040XP-107REG	\$240
4040XP Metal template – Rw/PA (regular arm w/PA only)	4040XP-107PA	\$240
4040XP Metal template – EDA (extra duty arm only)	4040XP-107EDA	\$240
4040XP Metal template – CUSH (Cush-n-Stop arm only)	4040XP-107CUSH	\$240
4110 Metal template kit Two (2) template kit (includes 4110-107EDA and -107CUSH)	4110-3107	\$480
4110 Metal template – EDA (extra duty arm only)	4110-107EDA	\$240
4110 Metal template – CUSH (Cush-n-Stop arm only)	4110-107CUSH	\$240
4010 Metal template – REG (regular arm only)	4010-107REG	\$240

About Allegion

Allegion (NYSE: ALLE) is a global pioneer in safety and security, with leading brands like CISA®, Interflex®, LCN®, Schlage®, SimonsVoss® and Von Duprin®. Focusing on security around the door and adjacent areas, Allegion produces a range of solutions for homes, businesses, schools and other institutions. Allegion is a \$2 billion company, with products sold in almost 130 countries. For more, visit www.allegion.com.

aptiQ ■ LCN ■ **SCHLAGE** ■ STEELCRAFT ■ VON DUPRIN



© 2017 Allegion
010590, Rev. 06/17
www.allegion.com/us

LCN®

1250 Series

Light duty cast aluminum door closer



Quality and value – with the service and support you expect from LCN®

The patented 1250 Series offers you alternative closer solutions at competitive prices, with LCN® quality, engineering, reliability and service all built right in. These door closers are ANSI Grade 1 certified, constructed of durable cast aluminum and built with top-quality components to provide years of worry-free performance in light duty door control applications.

Designed for low-frequency and low-abusive traffic areas, 1250 Series closers are ideal for aluminum storefronts, interior offices and many other applications. They combine dependable operation, low maintenance and a stylish look – with or without the optional slim line cover. And with the most common hole pattern in the industry, the 1250 Series is the perfect choice for easy aftermarket replacement.

Key Features

- Cast Aluminum body
- Patented design
- Peel-n-Stick templates
- Universal screw pack
- Full complement bearing
- All weather fluid
- Adjustable spring size 1-5
- Non-handed
- 15 Year warranty

With LCN, you get the great product features you need, plus so much more

Every 1250 Series closer we make is backed by LCN's proven history of providing the highest-quality, most reliable performance in the industry. Plus, with LCN you get the most knowledgeable, responsive customer service and the best technical support team in the business – with more than 150 years of combined experience. That's the kind of added value you can count on to meet your needs, every single time.

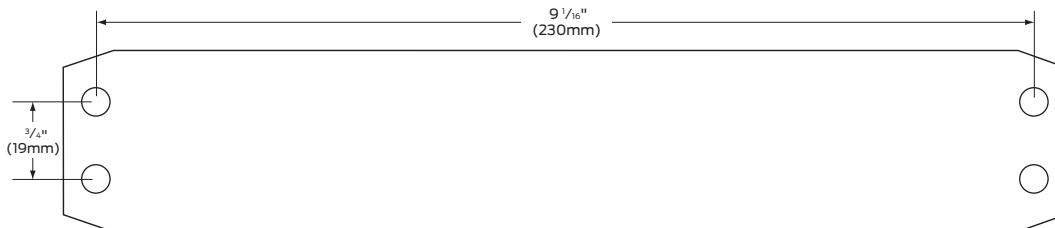
1250 Series cross reference	
LCN	1250
Norton	1600
Sargent	1130
Yale	50
Dorma	7400

Contact us at 877-671-7011 to consult with an LCN Representative or Technical Advisor.

Visit us at us.allegion.com/brands/lcn for product information and additional resources.

1250 Series specifications

Certifications	Grade 1 - ANSI A156.4; UL/cUL; ADA; 100 Hour salt spray; meets BAA - Buy American Act
Body construction	<ul style="list-style-type: none"> Cast Aluminum body Full complement bearing 1 3/8" Piston diameter 5/8" Diameter heat treated pinion journal
Fluid	All weather
Handing	Non-handed
Templating	Peel-n-Stick templates - 3/4" x 9 1/16" mounting hole pattern
Size	Adjustable spring size 1-5
Warranty	15 years
Fasteners	Standard universal screw pack includes self reaming and tapping Screws (SRT), machine screws, wood screws and thru bolts (Torx security and longer thru bolts optional)
Arms	Standard tri-pack includes arms for regular pull side, top jamb or parallel arm mounting
	Optional arms: <ul style="list-style-type: none"> Hw/PA - Hold open w/62PA (3049; 62PA) LONG - Long arm for deep reveal (3077; 79LR) HLONG - Hold open long arm (3049; 3048L) EDA - Extra duty parallel arm (3077EDA) HEDA - Hold open extra duty parallel arm (HEDA) CUSH - Cush-n-Stop (3077CNS) HCUSH - Hold open Cush-n-Stop (3049CNS) SCUSH - Spring Cush-n-Stop (3077SCNS) SHCUSH - Spring hold open Cush-n-Stop (3049SCNS) REG/62A - Regular arm - extra clearance (3077; 62A) Hw/62A - Hold open - extra clearance (3049; 62A)
Finishes/colors	<ul style="list-style-type: none"> Aluminum (689) Statuary bronze (690) Light bronze (691) Black (693) Dark bronze (695) Brass (696) Custom colors optional
Brackets	<ul style="list-style-type: none"> 30 - Cush shoe support (30) 62A - Auxiliary shoe for parallel mount - extra clearance (62A) 419 - Panel adaptor for parallel mount (419)
Accessories	<ul style="list-style-type: none"> 18 - Plate for hinge side mount (18) 18PA - Plate for parallel arm (18PA) 61 - Blade stop for cush shoe support (61) Optional slim line plastic cover (72) Optional SRI



About Allegion

Allegion (NYSE: ALLE) is a global pioneer in safety and security, with leading brands like CISA®, Interflex®, LCN®, Schlage®, SimonsVoss® and Von Duprin®. Focusing on security around the door and adjacent areas, Allegion produces a range of solutions for homes, businesses, schools and other institutions. Allegion is a \$2 billion company, with products sold in almost 130 countries. For more, visit www.allegion.com.

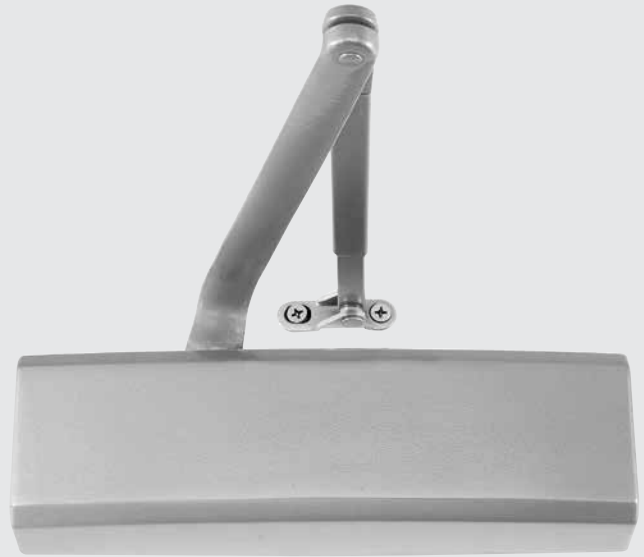


ALLEGION™

LCN®

4050 Series

Heavy duty cast aluminum
door closer



Rugged durability and dependability,
at a competitive price.

The 4050 Series cast aluminum closer is engineered for durability and built tough to excel in the harsh environments of high frequency, highly abusive traffic areas. It is ideal for commercial building applications and competitive specification situations that demand a combination of quality, reliability and value.

This cast aluminum door closer offers premium features like powder coating, a full complement bearing, All Weather Fluid and a 25 year warranty. With a standard full plastic cover and optional full metal cover, 6 standard colors and unlimited custom colors, the 4050 Series is the right choice for a wide range of heavy duty applications.

Key Features

- Cast Aluminum Body
- Patent Pending Design
- Peel-n-Stick Templates
- Universal Screw Pack
- Full Complement Bearing
- All Weather Fluid
- Adjustable Spring Size 1-6
- Non-Handed
- 25 Year Warranty

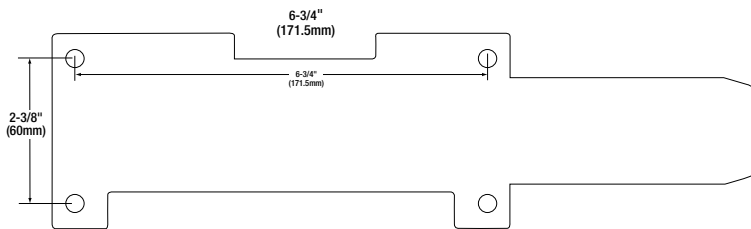
With LCN, you get the great product features you need, plus so much more.

Every 4050 Series closer we make is backed by LCN's proven history of providing the highest-quality, most reliable performance in the industry. Plus, with LCN you get the most knowledgeable, responsive customer service and the best technical support team in the business – with more than 150 years of combined experience. That's the kind of added value you can count on to meet your needs, every single time.

4050 SERIES CROSS REFERENCE	
LCN	4050
Norton	7500
Sargent	351
Yale	4400
Dorma	8900

4050 Series Specifications

Certifications	Grade 1 - ANSI A156.4, UL/cUL, ADA, 100 Hour Salt Spray, Meets BAA - Buy American Act
Body Construction	<ul style="list-style-type: none"> Cast Aluminum Body Full Complement Bearing 1 1/2" Piston Diameter 11/16" Diameter Double Heat Treated Pinion Journal
Fluid	All Weather Fluid
Handing	Non-Handed
Templating	Peel-n-Stick Templates - 2 3/8" x 6 3/4" Mounting Hole Pattern
Size	Adjustable Spring Size 1-6
Warranty	25 Years
Fasteners	Standard includes Self Reaming and Tapping (SRT) and Machine Screws. Thru Bolts, Wood Screws and Torx Security Screws are optional.
Arms	<p>Standard Tri-Pack includes arms for Regular Pull Side, Top Jamb or Parallel Arm Mounting</p> <p>Optional Arms:</p> <ul style="list-style-type: none"> Hw/PA - Hold Open w/62PA (3049; 62PA) LONG - Long Arm for Deep Reveal (3077; 79LR) HLONG - Hold Open Long Arm (3049; 3048L) EDA - Extra Duty Parallel Arm (3077EDA) EDA/62G - Extra Duty Parallel Arm - Extra Clearance (3077EDA/62G) HEDA - Hold Open Extra Duty Parallel Arm (HEDA) HEDA/62G - Extra Duty Parallel Arm Hold Open - Extra Clearance (HEDA/62G) CUSH - Cush-n-Stop (3077CNS) HCUSH - Hold Open Cush-n-Stop (3049CNS) SCUSH - Spring Cush-n-Stop (3077SCNS) SHCUSH - Spring Hold Open Cush-n-Stop (3049SCNS) REG/62A - Regular Arm - Extra Clearance (3077; 62A) Hw/62A - Hold Open - Extra Clearance (3049; 62A)
Finishes/Colors	<ul style="list-style-type: none"> Aluminum (689) Statuary Bronze (690) Light Bronze (691) Black (693) Dark Bronze (695) Brass (696) Custom colors optional
Brackets	<ul style="list-style-type: none"> 30 - Cush Shoe Support (30) 62A - Auxiliary Shoe for Parallel Mount - Extra Clearance (62A) 62PA - Auxiliary Shoe for Parallel Mount (62PA) 419 - Panel Adaptor for Parallel Mount (419)
Accessories	<ul style="list-style-type: none"> 18 - Plate for Hinge Side Mount (18) 18PA - Plate for Parallel Arm (18PA) 18G - Plate for Extra Clearance for use with 62G Arm (18G) 61 - Blade Stop for Cush Shoe Support (61) Full Plastic Cover (72); Optional Full Metal Cover (72MC) Optional SRI



Contact us at 877-671-7011 to consult with an LCN Representative or Technical Advisor. Visit us at us.allegion.com/brands/lcn for product information and additional resources.

About Allegion

Allegion (NYSE: ALLE) is a global pioneer in safety and security, with leading brands like CISA®, Interflex®, LCN®, Schlage® and Von Duprin®. Focusing on security around the door and adjacent areas, Allegion produces a range of solutions for homes, businesses, schools and other institutions. Allegion is a \$2 billion company, with products sold in almost 130 countries. For more, visit www.allegion.com.

LCN®

1460 Series

Green dial



Overview

LCN continues to make product improvements, including the easy, fast and fool-proof Green Dial. This patented Green Dial is a visual indicator for spring force adjustments; taking the guess-work out of closer spring adjustment settings and cutting down on installation time. Additionally, the mounting bracket has been updated on the spring tube to make the closer easier to install and aesthetically appealing.

Pricing

There is no additional cost for the Green Dial; 1460 Series LCN door closer pricing can be found on page 11 in the LCN price book. All orders placed on November 10, 2014 and after will include these updates.

Features and benefits

- Adjustments on the 1460 Series can now be completed quickly
- The green dial allows for ease of installation and adjustments
- The new mounting bracket gives the closer an aesthetically appealing look and feel
- Power display allows for foolproof adjustments

Contact your local sales representative or call customer care to start the discussion at 877.671.7011.

About Allegion

Allegion (NYSE: ALLE) creates peace of mind by pioneering safety and security. As a \$2 billion provider of security solutions for homes and businesses, Allegion employs more than 8,000 people and sells products in more than 120 countries across the world. Allegion comprises more than 25 global brands, including strategic brands CISA®, Interflex®, LCN®, Schlage® and Von Duprin®. For more, visit www.allegion.com.

aptiQ ■ LCN ■  ■ STEELCRAFT ■ VON DUPRIN

LCN®

Actuators and sensors



Overview

LCN actuators and sensors are designed to be used with LCN automatic operators. The desired function, traffic patterns and physical design of the opening will determine the type of actuator used.

Safety and activation sensors are designed to protect pedestrians and help prolong the life of an automatic operator. LCN safety sensors can be used on all automatic operators.

LCN also offers a full line of activation device accessories, including surface and flush mounted boxes, weather rings, escutcheons, wireless transmitters and receivers (1 channel), key chain activation devices (up to 4 buttons), sequencers, and a bollard post (used with 4 3/4" square actuator.)

Features and benefits

- Complies with ANSI 156.19
- Can be ordered individually or in kits that combine common products for a specific application
- Beveled edges provide a tamper and vandal resistant solution to push plate needs, allowing no room for objects to get between plate and mounting box
- An all-active plate activates with any "push" location
- Stainless steel finish will not deteriorate or rust where it is touched — scratch and scuff resistant
- All activation push plates are available with ADA logo art and text or with ADA logo art only
- Text and ADA Compliant logo art are baked onto the surface for added durability

Stainless steel push plates

Round push plates



6" Round style push plate



4 1/2" Round style push plate

Square push plates



4 3/4" Square style push plate

Jamb push plates



Jamb style push plate



Dual jamb style push plate

Ready mount actuators



6" Slim profile push plate



4 3/4" Square style push plate



36" x 6" Full length actuator

Sensors



Door mount
Safety sensor



Header mount
Safety sensor



Header mount
Activation sensor

Actuator accessories

LCN offers a full line of activation device accessories, including: surface and flush mounted boxes, weather rings, escutcheons, wireless transmitters and receivers (1 channel), key chain activation devices (up to 4 buttons), sequencers, and a bollard post (used with 4 3/4" square actuator)

Mounting boxes



Weather rings



Bollard post



Wireless transmitters/receivers



Allegion, the Allegion logo, LCN and the LCN logo are trademarks of Allegion plc, its subsidiaries and/or affiliates in the United States and other countries. All other trademarks are the property of their respective owners.

About Allegion

Allegion (NYSE: ALLE) is a global pioneer in safety and security, with leading brands like CISA®, Interflex®, LCN®, Schlage®, SimonsVoss® and Von Duprin®. Focusing on security around the door and adjacent areas, Allegion produces a range of solutions for homes, businesses, schools and other institutions. Allegion is a \$2 billion company, with products sold in almost 130 countries. For more, visit www.allegion.com.

KRYPTONITE ■ LCN ■ SCHLAGE ■ STEELCRAFT ■ VON DUPRIN



© 2017 Allegion
010114, Rev. 08/17
www.allegion.com/us

LCN®

HSA Series

Electrically controlled
closer/holder with hold
open scanner



Overview

LCN's HSA Sentronic 4310 and 4410 Series are electrically controlled closers/holders designed to provide easy passage for groups of pedestrians through high traffic doors. Not only does this reduce the wear and tear from constantly pushing the door open, but it also creates a safer environment for those who move just a bit slower.

With a constant flow of people entering or exiting through an opening, holding doors open for a crowd can be a hassle. The LCN HSA Series scanner works with your closer to hold the door open for you while you exit, and continues to hold the door open until the scanner recognizes the last person has passed through the doorway.

Features and benefits

- Selectable setting for hold-open period at either 15 or 30 seconds
- Utilizes LCN's 4000 Series heavy duty Cast Iron door closer
- Functions as a full rack and pinion door closer when current is interrupted or the continuous hold-open is not engaged
- Concealed or surface wiring
- Shipped with standard 24V cylinder; 120V option requires 3210 transformer
- Handed for right or left swinging doors
- Built in switch to adjust hold-open feature from scanner controlled to continuous

How it works

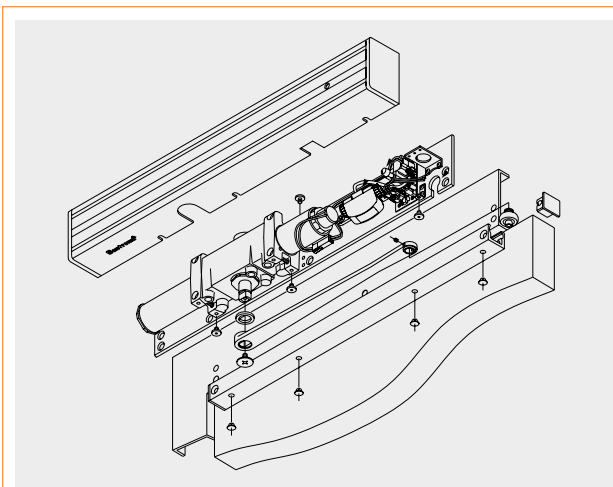
Pedestrians trigger the built-in scanner by moving through the doorway. When the door is opened to 80° or more, the door is electrically held open to minimize wear and tear on the door hardware. After the last pedestrian in a group passes through the doorway, the system timer releases the hold-open and closes the door utilizing a heavy-duty closer.

Common applications

The 4310 Series and the 4410 Series HSA closers/holders are more commonly found in applications such as theaters, museums, auditoriums, nursing homes, sporting arenas, gymnasiums, concert halls, places of worship, and cafeterias.

4310/4410 Series options and specifications

Certifications	<ul style="list-style-type: none">Grade 1 - ANSI A156.4; ANSI A156.15; NFPA 101-Life Safety Code
Mounting	<ul style="list-style-type: none">4310: mounts hinge (pull) side4410: mounts top jamb (push) side
Finish	<ul style="list-style-type: none">Standard or optional powder coated finishOptional plated finish on cover, arm, and fasteners
Cover	Metal cover, standard
Cylinder	<ul style="list-style-type: none">HandedMulti-point hold-open after 80°4310: sized cylinders for interior doors to 4'0"4410: sized cylinders for interior doors to 4'6"
Arm function	<ul style="list-style-type: none">4310: standard single arm (up to 160°); double egress (up to 95°)4410: regular double arm (up to 150°)



Contact us at 877.671.7011 to consult with an LCN Representative or Technical Advisor. Visit us at www.allegion.com/us for product information and additional resources.

About Allegion

Allegion (NYSE: ALLE) is a global pioneer in safety and security, with leading brands like CISA®, Interflex®, LCN®, Schlage® and Von Duprin®. Focusing on security around the door and adjacent areas, Allegion produces a range of solutions for homes, businesses, schools and other institutions. Allegion is a \$2 billion company, with products sold in almost 130 countries. For more, visit www.allegion.com.

aptiQ ■ LCN ■ SCHLAGE ■ STEELCRAFT ■ VON DUPRIN



© 2015 Allegion
009457, Rev. 08/15
www.allegion.com/us

LCN®

4040XP Series

Stronger, smarter and built for the real world



Overview

The 4040XP is LCN's most durable and flexible heavy duty surface mounted closer, designed for institutional and other demanding high traffic applications. The 4040XP sets a new standard for reliability, longevity and value with a beefier design and extraordinary performance testing that goes far beyond industry requirements. We built the 4040XP from the inside out, combining tougher, bolder construction with proven LCN technology. The result is a closer that's stronger, smarter and delivers remarkable value in a variety of applications.

The patented green dial on the 4040XP makes spring adjustments fast, easy and foolproof. The all-weather fluid reduces maintenance and ensures consistent performance through every season. High-traffic doors call for heavy-duty closers – closers that won't let you down no matter how many people go through the door or how hard they kick, push or slam against it. And when it comes to heavy-duty closers, no other closer performs like the LCN 4040XP.

Features and benefits

- Cast iron
- Forged steel arm
- Double heat treated steel pinion
- All weather fluid
- Non-handed
- LCN® “Green Dial” spring force indicator
- Peel-n-Stick templates
- UL and cUL Listed
- ¾" Journal diameter pinion
- Full compliment bearing
- Tested and certified under ANSI standard A156.4, Grade 1

About Allegion

Allegion (NYSE: ALLE) is a global pioneer in safety and security, with leading brands like CISA®, Interflex®, LCN®, Schlage® and Von Duprin®. Focusing on security around the door and adjacent areas, Allegion produces a range of solutions for homes, businesses, schools and other institutions. Allegion is a \$2 billion company, with products sold in almost 130 countries. For more, visit www.allegion.com.

LCN®

Electrohydraulic automatic operators



Overview

LCN's electrohydraulic automatic operators integrate the 4000 Series mechanical closer to provide a smooth and easy manual opening experience for preliminary manual use applications. When activated, the door works as a fully functional low energy automatic operator to increase accessibility.

The low energy electric Auto Equalizer 4600 Series utilizes LCN's 4040XP mechanical closer to increase product life when the door is primarily used manually. When activated, a motor/clutch system drives the manual closer to automatically open the door.

The low energy pneumatic Auto Equalizer 4800/2600 Series provides quiet, smooth and reliable door operation and allows for use in hazardous locations where electronically operated devices are not permitted.

Features and benefits

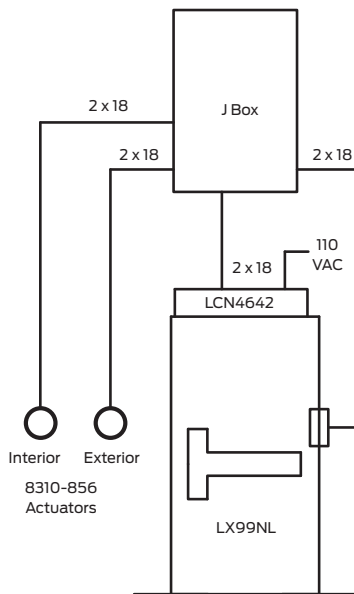
- UL Listed for self-closing doors without hold open under "Swinging door closers"
- Tested and certified under ANSI Standard A156.19
- ANSI Standard A117.1
- Electric Auto Equalizer has a no-destruct feature that allows clutch to slip when abused to reduce damage to the operator
- Digital control suite in electric Auto Equalizer has on-board diagnostics to ensure easy, trouble-free installation
- Pneumatic Auto Equalizer has easily adjustable air pressure and timing cycle to meet the needs of a specific installation
- Pneumatic Auto Equalizer is available in four different mounting configurations

Features	4600 Series	4800/2600 Series
Handed	No	No; Yes (2610)
Mounting options	Push (4640) Pull (4630)	Push (4820) Pull (4810) Parallel arm (4840) Concealed (2610)
On board power supply	Yes	No
Digital control box	Yes	No
Header length	33 1/2"	20"
Maintains memory after power loss	Yes	Yes
Adjustable manual open face	Yes	Yes
Blow open capability	No	Yes
Meets UL requirements	UL/cUL 325 and 228	UL 228

All electrohydraulic operators are available in seven standard or 150+ custom powder coated finishes.

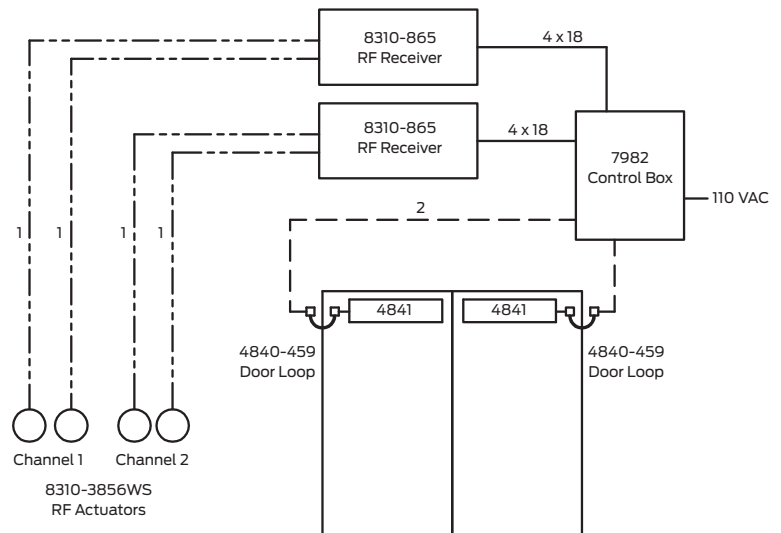
Sample common applications

Exterior retail entrance



Operation: When panic device is mechanically dogged both interior and exterior actuators will be enabled through LX switch. When device is undogged actuators will not function.

Church/library entrance



Operation: Doors normally closed, not latched. Two 8310-3856WS actuators to independently signal each door to swing.

¹ Dashed/dotted lines indicate RF signal, not a wiring connection.

² Dashed lines indicate pneumatic 925 tubing.

Allegion, the Allegion logo, LCN and the LCN logo are trademarks of Allegion plc, its subsidiaries and/or affiliates in the United States and other countries. All other trademarks are the property of their respective owners.

About Allegion

Allegion (NYSE: ALLE) is a global pioneer in safety and security, with leading brands like CISA®, Interflex®, LCN®, Schlage®, SimonsVoss® and Von Duprin®. Focusing on security around the door and adjacent areas, Allegion produces a range of solutions for homes, businesses, schools and other institutions. Allegion is a \$2 billion company, with products sold in almost 130 countries. For more, visit www.allegion.com.

KRYPTONITE ■ LCN ■  ■ STEELCRAFT ■ VON DUPRIN



© 2017 Allegion
010112, Rev. 08/17
www.allegion.com/us