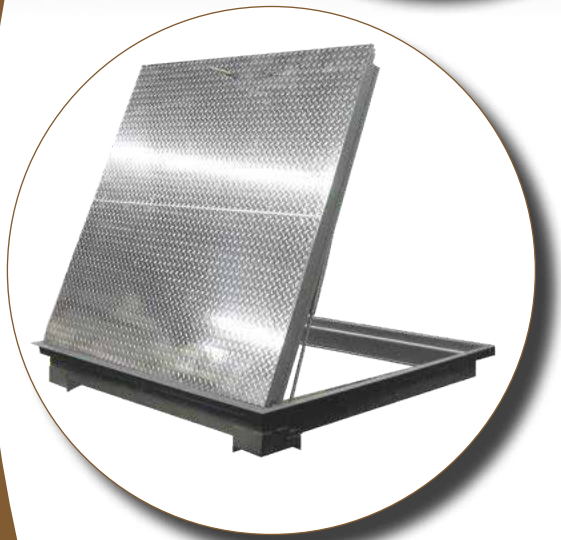
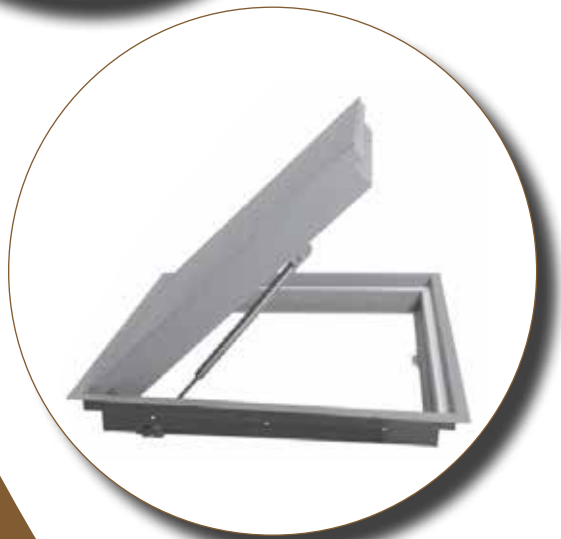


# FLOOR DOORS



**Division 08 30 00**  
**Specialty Doors and Frames**

**Division 08 31 16**  
**Floor Doors**



**ACTIVAR** INC.  
CONSTRUCTION PRODUCTS GROUP



JL INDUSTRIES



AIR LOUVERS



HIAWATHA



SANBORN



THOMAS



ACCESSORIES  
RIA  
ROOF TOP



# FLOOR DOORS: FIRE-RATED - NEW CONSTRUCTION



## FFD™ Series: One to Three Hour Fire-rated Floor Doors

JL Industries brings you a line of fire-rated floor doors, in the largest sizes in the industry. These patented doors are built to give years of trouble-free service and tested to industry standards by Intertek Warnock Hersey.

**Frame:** 12 and 14 gauge frame construction with primer coat includes masonry straps. Special below-grade finish for greater protection. Depth: FFD1 - 4 3/8", FFD1.5 and FFD2 - 5 3/8", FFD3 - 6 1/2".

**Door:** Fully-gasketed door is fabricated from 3/16" steel diamond plate (for 1-2 hour) and from 1/4" aluminum diamond plate (for 3 hour) and includes high temperature insulation.

**Hardware:** Continuous stainless hinges, nitrogen cylinders & slam latch. Fasteners or anchor straps provided depending on installation specified. Standard door latch utilizes a removable tool and plug, with spoon handle on underside.

**Live Load:** 150 lbs/ft<sup>2</sup> (700kg/m<sup>2</sup>)

**Sizes:** FFD1, FFD1.5, FFD2, minimum size 14" x 14", FFD3 minimum size 30" x 24", max. sizes see chart below. Incremental sizes available. ORDER SIZE IS INSIDE FRAME OPENING SIZE - SEE DWG.

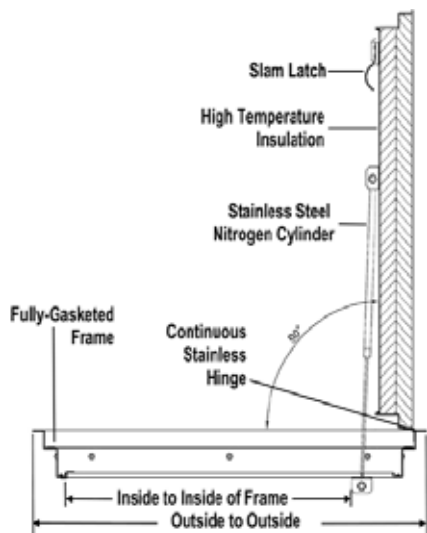
**Applications:** Do not expose to rain—dry locations only

**Optional Features at Additional Cost for FFD1, FFD1.5 and FFD2:** 1/4" Smooth or diamond plate aluminum, 1/4" steel diamond plate, 3/16" smooth steel plate, recessed 3/16" door for tile or carpet, live load of 300 lbs/in<sup>2</sup>, stainless recessed turn handle, padlock hasp underside, detention locks, self-closing mechanism for selected models.

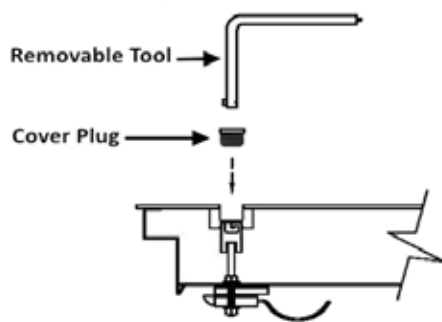
**Options for FFD3:** 1/4" Smooth aluminum door, stainless recessed turn handle, padlock hasp underside, detention locks, yellow painted door with lettering. Self-closing mechanism for selected models.

**Easily installed for cast-in place or wood-framed applications:** Installation conditions vary, so dimensions for rough openings is dependent on each situation. We can provide installation instructions and block-out dimensions by request. FFD3 can be installed in masonry only.

Tested and listed by Warnock Hersey to standards: NFPA 288, ASTM E119, CAN/ULC S101 and NFPA 251; which states "Transmission of heat through the specimen (floor door) during classification period (listed rating period) shall not have been as to raise the average temperature on its unexposed surface more than 139 degrees C (250 degrees F) above its initial temperature". Hose stream test standards: NFPA 252, UL 10(b), CAN4-S104 (ULC-S104) and UBC 7-2-94.



### STANDARD LATCH



### LOCK OPTIONS FOR FFD SERIES

Recessed Hand-Operated Turn Handle (T)	Recessed Turn Handle Topside with Detention Lock Underside (D)	Detention Lock Topside with Operable Knob Underside (E)

ORDER SIZE W x L (Hinge side)	OUTSIDE TO OUTSIDE OF FRAME W x L	CLEAR UNOBSTRUCTED OPENING WIDTH BY LENGTH (HINGE SIDE)			
		FFD1	FFD1.5	FFD2	FFD3
24 x 24	32 5/8 x 32 5/8	19 1/4 x 19 5/8	--	18 x 19 7/8	--
24 x 30	32 5/8 x 38 5/8	19 1/4 x 25 5/8	--	18 x 25 7/8	--
24 x 36	32 5/8 x 44 5/8	19 1/4 x 31 5/8	--	18 x 31 7/8	--
30 x 24	38 5/8 x 32 5/8	25 1/4 x 19 5/8	24 x 19 1/2	24 x 19 5/8	22 3/4 x 19 5/8
30 x 30	38 5/8 x 38 5/8	25 1/4 x 25 5/8	24 x 25 1/2	24 x 25 5/8	22 3/4 x 25 5/8
30 x 36	38 5/8 x 44 5/8	25 1/4 x 31 5/8	24 x 31 1/2	24 x 31 5/8	22 3/4 x 31 5/8
30 x 48	38 5/8 x 56 5/8	25 1/4 x 43 5/8	24 x 43 1/2	24 x 43 5/8	22 3/4 x 43 5/8
30 x 54	30 5/8 x 49 5/8	25 1/4 x 49 5/8	24 x 49 1/2	24 x 49 5/8	22 3/4 x 49 5/8
32 x 32	40 5/8 x 40 5/8	27 1/4 x 27 5/8	26 x 27 1/2	26 x 27 5/8	24 3/4 x 27 5/8
32 x 40	40 5/8 x 48 5/8	27 1/4 x 35 5/8	26 x 35 1/2	26 x 35 5/8	24 3/4 x 35 5/8
36 x 24	44 5/8 x 32 5/8	31 1/4 x 19 5/8	30 x 19 1/2	30 x 19 5/8	28 3/4 x 19 5/8
36 x 30	44 5/8 x 38 5/8	31 1/4 x 25 5/8	30 x 25 1/2	30 x 25 5/8	28 3/4 x 25 5/8
36 x 36	44 5/8 x 44 5/8	31 1/4 x 31 5/8	30 x 31 1/2	30 x 31 5/8	28 3/4 x 31 5/8
36 x 42	44 5/8 x 50 5/8	31 1/4 x 37 5/8	30 x 37 1/2	30 x 37 5/8	28 3/4 x 37 5/8
36 x 48	44 5/8 x 56 5/8	31 1/4 x 43 5/8	30 x 43 1/2	30 x 43 5/8	28 3/4 x 43 5/8
36 x 54	44 5/8 x 62 5/8	31 1/4 x 49 5/8	30 x 49 1/2	30 x 49 5/8	28 3/4 x 49 5/8
40 x 40	48 5/8 x 48 5/8	35 1/4 x 35 5/8	34 x 35 1/2	34 x 35 5/8	32 3/4 x 35 5/8
42 x 42	50 5/8 x 50 5/8	37 1/4 x 37 5/8	36 x 37 1/2	36 x 37 5/8	34 3/4 x 37 5/8
42 x 54	50 5/8 x 62 5/8	37 1/4 x 49 5/8	36 x 49 1/2	36 x 49 5/8	34 3/4 x 49 5/8
48 x 48	52 5/8 x 52 5/8	--	--	--	43 3/4 x 43 5/8
48 x 60	50 5/8 x 68 5/8	--	--	--	39 1/4 x 49 1/2
64 x 60	72 5/8 x 68 5/8	--	--	--	55 1/4 x 49 1/2

See Submittal for Floor Opening Dimensions for Sizes Shown Above



# FLOOR DOORS: ALUMINUM - NEW CONSTRUCTION

## AGF SERIES: Aluminum Gutter Floor Door

**Model AGF is a Fully Recessed Flush Aluminum Floor Door with an Integral Gutter System for Water Runoff. Designed for Cast-in Place Installation in New Construction Applications.**

**Frame:** The door frames are an engineered gutter frame design in extruded aluminum shapes specially designed for floor doors. The gutter is equipped with a 1-1/2" FTP drain coupling allowing for water runoff. The door is hinged such that when open, the door does not penetrate the gutter, thus preventing problems due to freezing or contaminating buildup. Door rests on 3/4" lip.

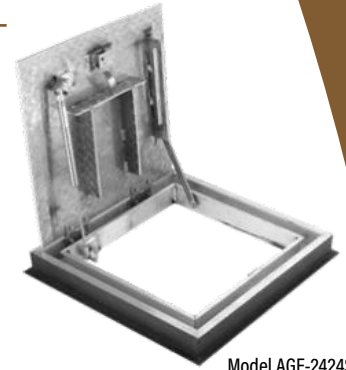
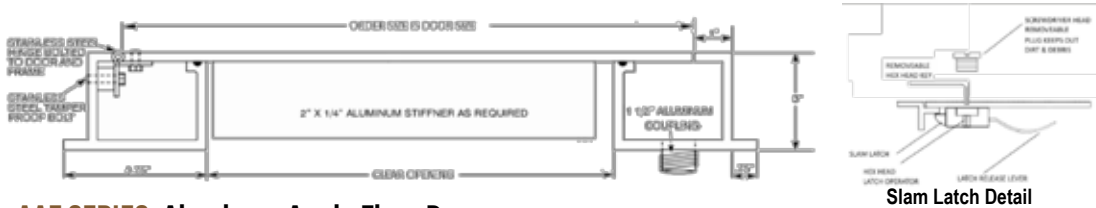
**Door:** Reinforced 1/4" diamond aluminum plate with flush allen key operator on exterior and handle opener on inside. Mill finish.

**Hardware:** Stainless steel hinges are bolted to the door and frame to minimize galvanic corrosion. All fasteners are tamperproof stainless steel bolts. Stainless steel slam locks, gas assist opener, hold open arm. Removable threaded plug with screwdriver head protects hex head operator from dust and debris.

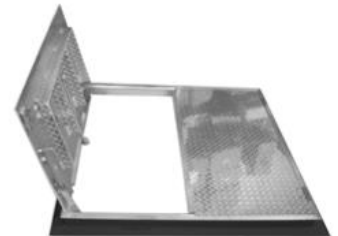
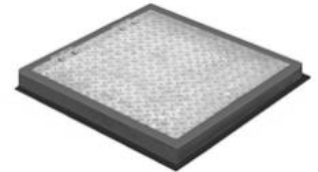
**Load:** 300 lbs/ft<sup>2</sup> —Doors with Higher "H20" Rating now Available—see separate submittal.

**Sizes:** Minimum 24" x 24", maximum 60" x 60", incremental sizes available. ORDER SIZE IS DOOR SIZE.

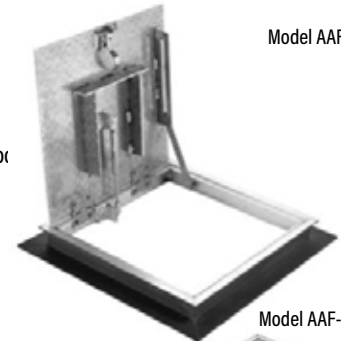
**Optional Features at Additional Cost:** Padlock tab. Heavy-duty model for H20 loads - See special submittal.



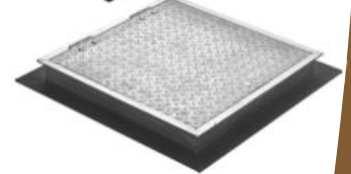
Model AGF-2424S



Model AAF-4848D



Model AAF-2424S



## AAF SERIES: Aluminum Angle Floor Door

**Model AAF is a Fully Recessed Aluminum Floor Door to be Installed Flush with the Surrounding Floor Surface. Designed for Cast-in Place Installation in New Construction Applications.**

**Frame:** 3/16" extruded aluminum. Mill finish with bituminous coating below grade. Door rests on 3/4" lip.

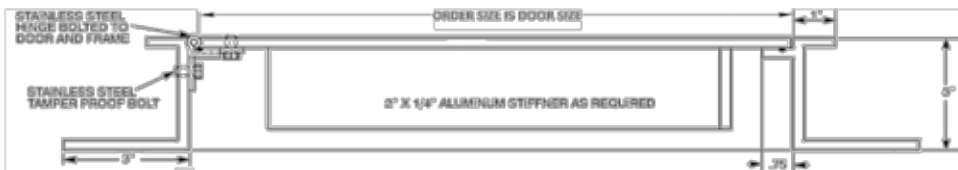
**Door:** Reinforced 1/4" diamond aluminum plate with flush allen key operator on exterior and handle opener on inside. Mill finish.

**Hardware:** Stainless steel hinges are bolted to the door and frame to minimize galvanic corrosion. All fasteners are tamperproof stainless steel bolts. Stainless steel slam locks, gas assist opener and hold open arm. Removable threaded plug with screwdriver head protects hex head operator from dust and debris.

**Load:** 300 lbs/ft<sup>2</sup>

**Sizes:** Minimum 24" x 24", maximum 60" x 60", incremental sizes available. ORDER SIZE IS DOOR SIZE.

**Optional Features at Additional Cost:** Padlock tab.



Slam Latch Detail

AGF - MODEL SIZE IS DOOR SIZE					AAF - MODEL SIZE IS DOOR SIZE				
Model# (Door Size) W x L (Hinge Side)	Doors	Clear Opening W x L	Outside Frame Dimension W x L	Approx. Weight	Model# (Door Size) W x L (Hinge Side)	Doors	Clear Opening W x L	Outside Frame Dimension W x L	Approx. Weight
AGF-2424S	Single	20 1/2" x 20 1/2"	28" x 28"	90 lbs.	AAF-2424S	Single	23" x 23"	30 1/2" x 30 1/2"	60 lbs.
AGF-2436S	Single	20 1/2" x 32 1/2"	28" x 40"	106 lbs.	AAF-2436S	Single	23" x 35"	30 1/2" x 42 1/2"	76 lbs.
AGF-3030S	Single	26 1/2" x 26 1/2"	34" x 34"	101 lbs.	AAF-3030S	Single	29" x 29"	36 1/2" x 36 1/2"	81 lbs.
AGF-3036S	Single	26 1/2" x 32 1/2"	34" x 40"	115 lbs.	AAF-3036S	Single	29" x 35"	36 1/2" x 42 1/2"	92 lbs.
AGF-3636S	Single	32 1/2" x 32 1/2"	40" x 40"	120 lbs.	AAF-3636S	Single	35" x 35"	42 1/2" x 42 1/2"	100 lbs.
AGF-3048S	Single	26 1/2" x 44 1/2"	34" x 52"	140 lbs.	AAF-3048S	Single	29" x 47"	36 1/2" x 54 1/2"	115 lbs.
AGF-3648S	Single	32 1/2" x 44 1/2"	40" x 52"	151 lbs.	AAF-3648S	Single	35" x 47"	42 1/2" x 54 1/2"	118 lbs.
AGF-4242S	Single	38 1/2" x 38 1/2"	46" x 46"	180 lbs.	AAF-4242S	Single	41" x 41"	48 1/2" x 48 1/2"	120 lbs.
AGF-4848D	Double	44 1/2" x 44 1/2"	52" x 52"	200 lbs.	AAF-4848D	Double	47" x 47"	54 1/2" x 54 1/2"	154 lbs.
AGF-4860D	Double	44 1/2" x 56 1/2"	52" x 64"	260 lbs.	AAF-4860D	Double	47" x 59"	54 1/2" x 66 1/2"	173 lbs.
AGF-4872D	Double	44 1/2" x 68 1/2"	52" x 76"	300 lbs.	AAF-4872D	Double	47" x 71"	54 1/2" x 78 1/2"	208 lbs.
AGF-6060D	Double	56 1/2" x 56 1/2"	64" x 64"	320 lbs.	AAF-6060D	Double	59" x 59"	66 1/2" x 66 1/2"	215 lbs.





# FLOOR DOORS: ALUMINUM - RETROFIT & RECESSED

## AAF-LR SERIES: Aluminum Angle Floor Door for Retrofit Openings

**Model AAF-LR is a Recessed Aluminum Floor Door to be Installed Flush with the Surrounding Floor Surface. This Floor Door Works Well for Use in Existing Openings.**

**Frame:** 3/16" extruded aluminum. Mill with bituminous coating below grade. Door rests on 3/4" lip.

**Door:** Reinforced 1/4" diamond aluminum plate with flush Allen key operator on exterior and handle opener on inside. Mill finish.

**Hardware:** Stainless steel hinges are bolted to the door and frame to minimize galvanic corrosion. All fasteners are tamperproof stainless steel bolts. Stainless steel slam locks, gas assist opener, hold open arm. Removable threaded plug with screwdriver head protects hex head operator from dust and debris.

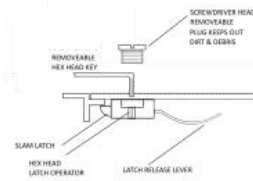
**Load:** 300 lbs/ft<sup>2</sup>

**Sizes:** Minimum 24" x 24", maximum 48" x 48", incremental sizes available. ORDER SIZE IS DOOR SIZE.

**Optional Features at Additional Cost:** Padlock Tab.



Model AAF-2424SLR



Slam Latch Detail



## RFD SERIES: Aluminum Floor Door with Recessed Door For Tile or Carpet

**Model RFD with a Recessed Door Panel for New Construction or Retrofit. Aluminum Construction and Stainless Components are Corrosion-Resistant**

**Frame:** 1/4" extruded aluminum. Mill finish with bituminous coating below grade. A 3-1/2" wide flange with 1/8" lip provides a stable surface for tile or carpet to be abutted to the door. Door rests on 3/4" door stop. Masonry anchor bolted onto frame for ease of installation.

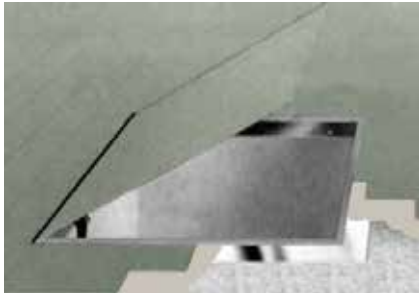
**Door:** 1/4" smooth reinforced aluminum with flush allen key operator on exterior and handle opener on inside. A 1/8" lip provides a clean edge for the application of flooring material. Mill finish.

**Hardware:** 2 torsion bars with hinge-arm and hold-open with red vinyl grip. Hardware is cadmium-plated. Removable threaded plug with screwdriver head protects hex head operator from dust and debris.

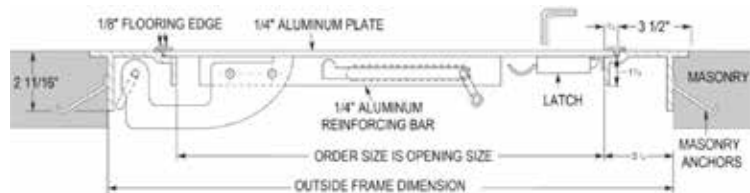
**Load:** 150 lbs/ft<sup>2</sup>

**Sizes:** Minimum 24" x 24", maximum 60" x 60", incremental sizes available. ORDER SIZE IS CLEAR OPENING, NOT DOOR SIZE.

**Optional Features at Additional Cost:** 3/16" lip height, stainless steel hardware available for high corrosive areas.



Model RFD-5 With Carpet Overlay



AAF-LR - MODEL SIZE IS DOOR SIZE				RFD - MODEL SIZE IS FRAME OPENING SIZE				
Model# (Door Size) W x L (Hinge Side)	Doors	Outside Frame Dimension W x L	Approx. Weight	Model#	Doors	Clear Opening W x L	Outside Frame Dimension W x L	Approx. Weight
AAF-2424SLR	Single	24 3/4" x 24 3/4"	60 lbs.	RFD-1	Single	24" x 24"	30 3/4" x 30 3/4"	60 lbs.
AAF-2436SLR	Single	24 3/4" x 36 3/4"	76 lbs.	RFD-2	Single	30" x 30"	36 3/4" x 36 3/4"	75 lbs.
AAF-3030SLR	Single	30 3/4" x 30 3/4"	81 lbs.	RFD-3	Single	30" x 36"	36 3/4" x 42 3/4"	88 lbs.
AAF-3036SLR	Single	30 3/4" x 36 3/4"	92 lbs.	RFD-4	Single	36" x 36"	42 3/4" x 42 3/4"	100 lbs.
AAF-3636SLR	Single	36 3/4" x 36 3/4"	100 lbs.	RFD-5	Single	42" x 42"	48 3/4" x 48 3/4"	135 lbs.
AAF-3048SLR	Single	30 3/4" x 48 3/4"	115 lbs.					
AAF-3648SLR	Single	36 3/4" x 48 3/4"	118 lbs.					
AAF-4242SLR	Single	42 3/4" x 42 3/4"	120 lbs.					
AAF-4848DLR	Double	48 3/4" x 48 3/4"	154 lbs.					

The Activar Construction Product Group is a dynamic group of six companies that have combined resources, innovation and experience to serve the commercial construction industry for over 70 years. Air Louvers offers a wide variety of metal vision lites & louvers, specialized glass, astragals, and metal edging for both wood and hollow metal doors. JL Industries, Samson Products and Thomas Enterprises have manufactured and distributed some of the leading lines of fire protection products including a full line of fire extinguishers and cabinets, AEDs and cabinets plus valve and hose cabinets. They also offer rated and non-rated access panels, roof accessories, corner guards, detention products and entrance floor mats & gratings. Rooftop Accessories offers safety railings and pipe support systems. Hiawatha Inc. provides high-quality architectural door hardware and components.