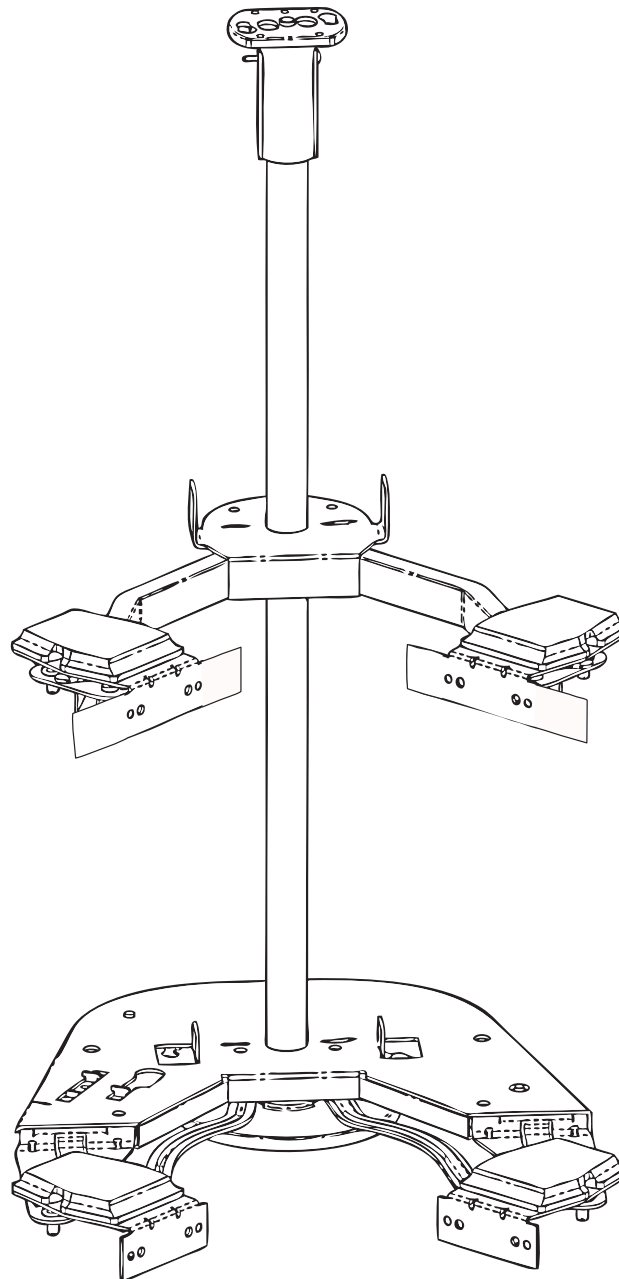


## Revolving Corner Unit

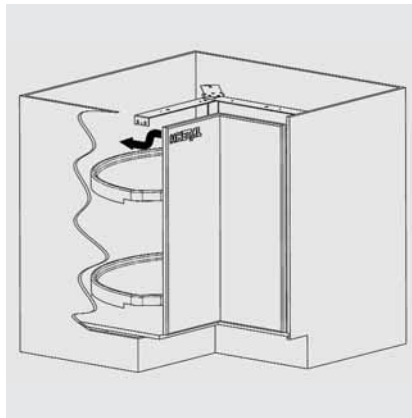


In addition to these general mounting instructions, please refer to the fitting instructions, where the individual drilling dimensions for the cabinet bottom, cabinet top, side walls and cabinet doors are specified.

These instructions also indicate if additional adjustments to the cabinet design are necessary. Please contact your Häfele Hardware Consultant if fitting specifications are necessary.

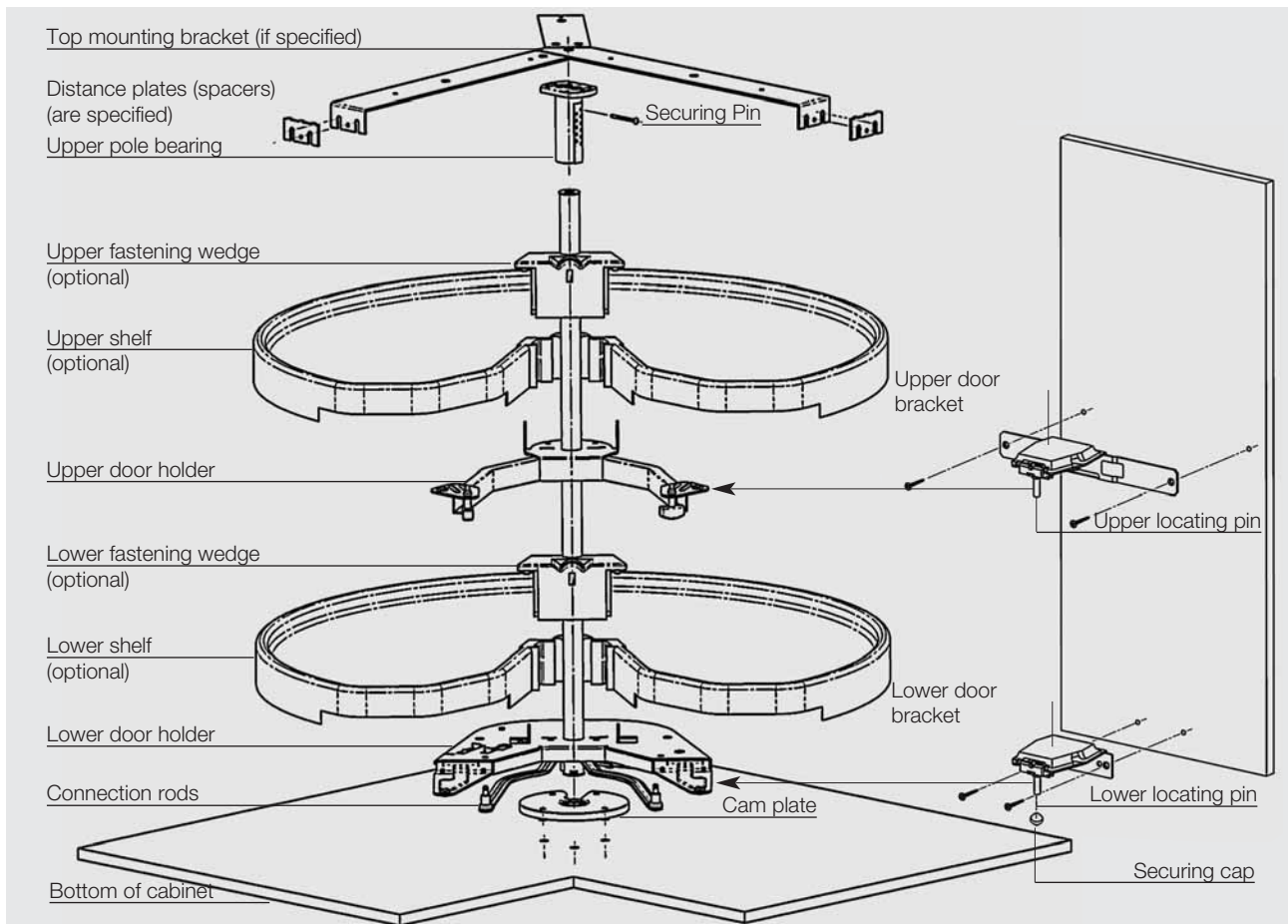
**Frameless Cabinets:**

The standard specification includes a steel top mounting bracket. The fitting has a door lowering device included which lowers the door automatically during opening. The door lowering device permits small gaps between the door and the countertop.



**Face Frame cabinets:**

The standard specification is without a top mounting bracket. The pole bearing is attached to the cabinet top. No lowering device is needed.

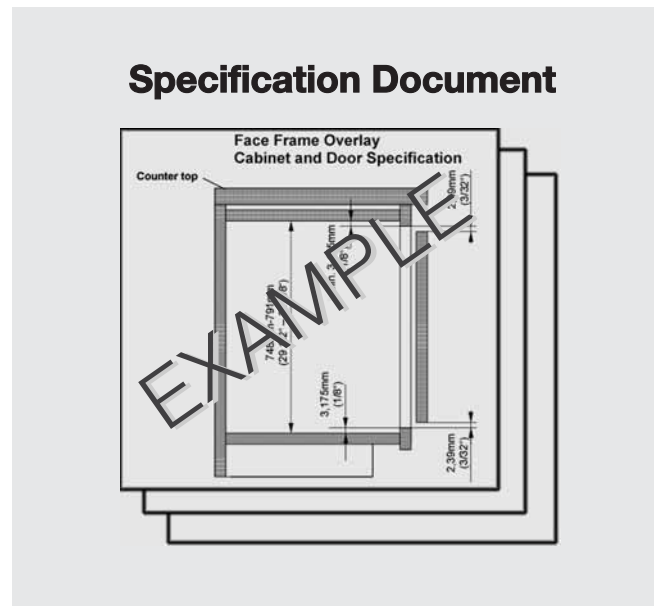


Example shows one shelf option.

# 1. Preparing cabinet bottom and side all/cabinet top

## Preparing cabinet bottom

Drill three holes into the cabinet bottom according to the illustration included in the fitting instructions.

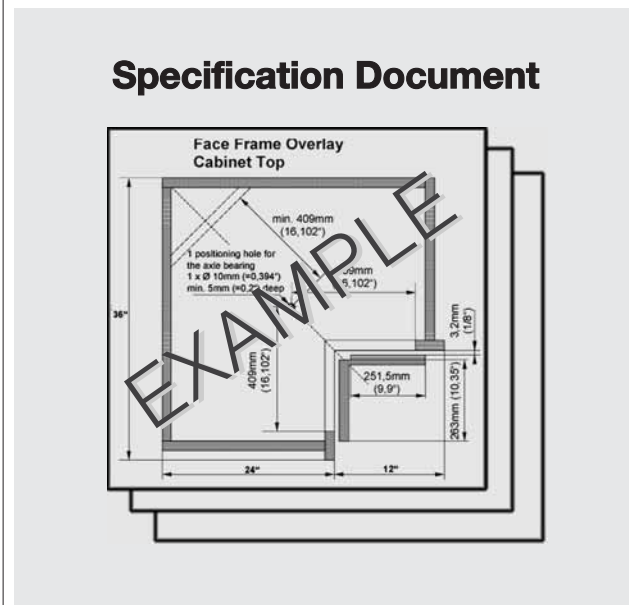
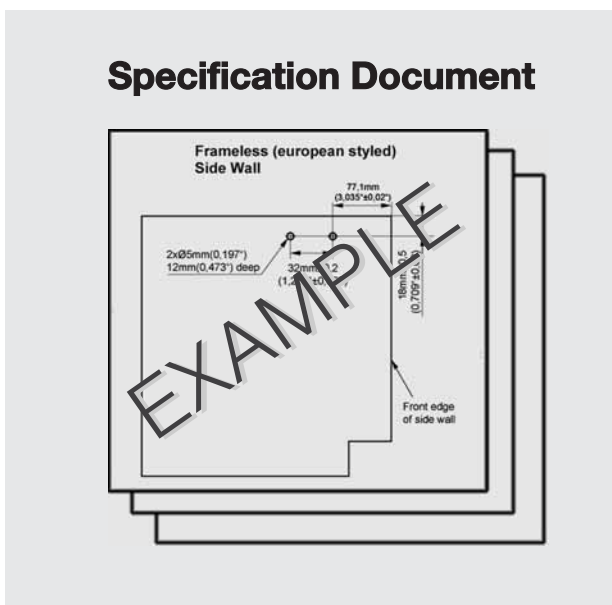


## If a top mounting bracket is specified (mainly frameless cabinets):

Drill two holes 12 mm deep with 5 mm bit into side walls (see drilling dimensions in fitting instructions).

## For cabinets with cabinet top:

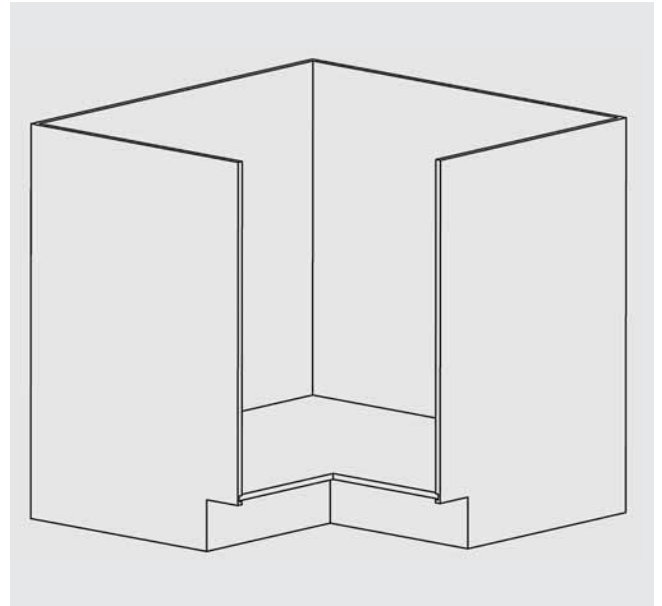
Drill one 10 mm hole into the cabinet top according to the illustration included in the fitting instructions.



## 2. Assembling side panels and cam plate

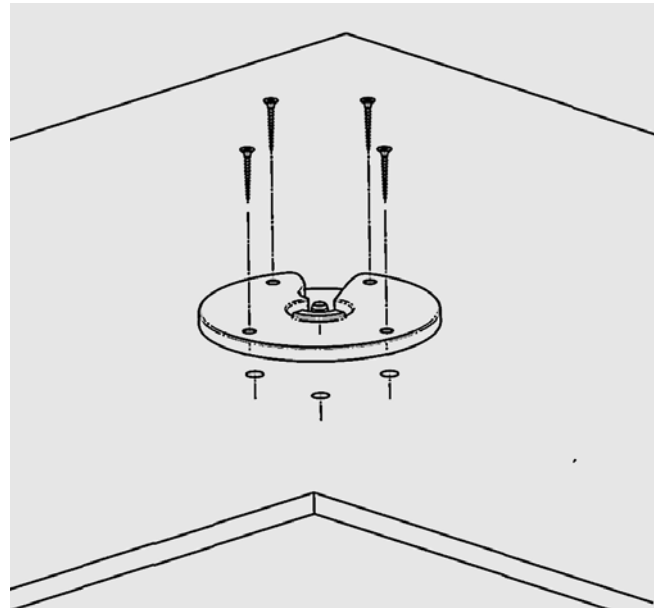
### Assembling side panels

After having drilled all holes, assemble the side panels.



### Mounting of cam plate

Press the cam plate into the drilled holes in the bottom of cabinet interior and fasten with four 3.5 x 30 mm (#6 x 1 1/8") flat head screws (customer supplied).



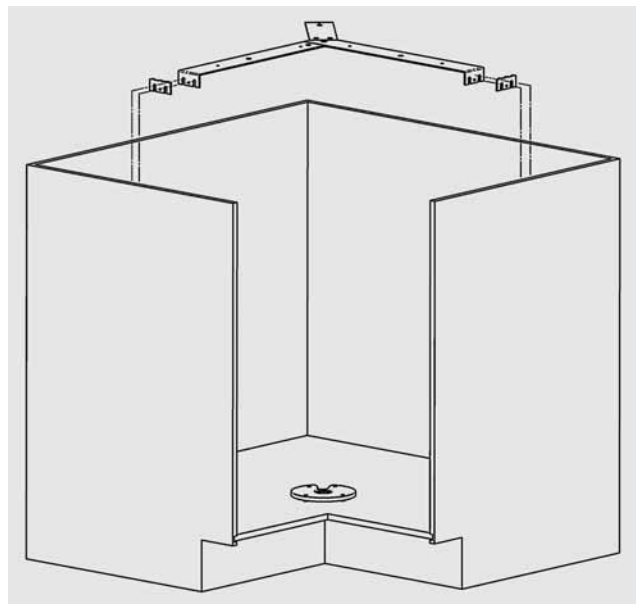
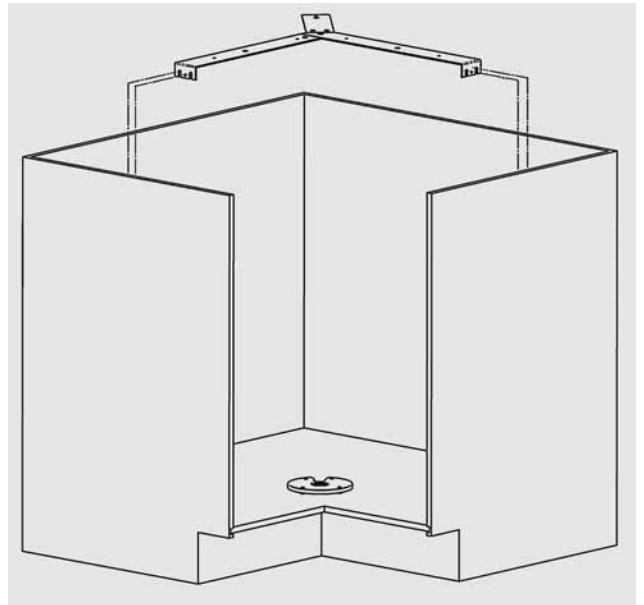
### 3. Installation of top mounting bracket only if specified

If cabinet has a top, proceed to **step 4. Installation of fitting, (page 6).**  
**(mainly face - frame cabinets)**

**Installation of top mounting bracket is only applicable if cabinet has no top. (mainly frameless cabinets)**

Fasten top mounting bracket with 6.2 x 10.5 mm Euro flange head screws (customer supplied).

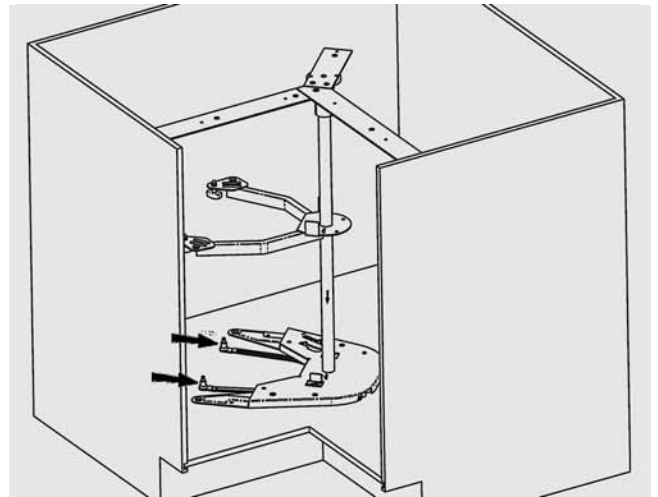
Please refer to your fitting instructions if the use of 3 mm spacers is specified. If the spacers are specified, please mount them between the top mounting bracket and the side wall. This assures the correct position of the upper pole bearing.



## 4. Installation of Fitting

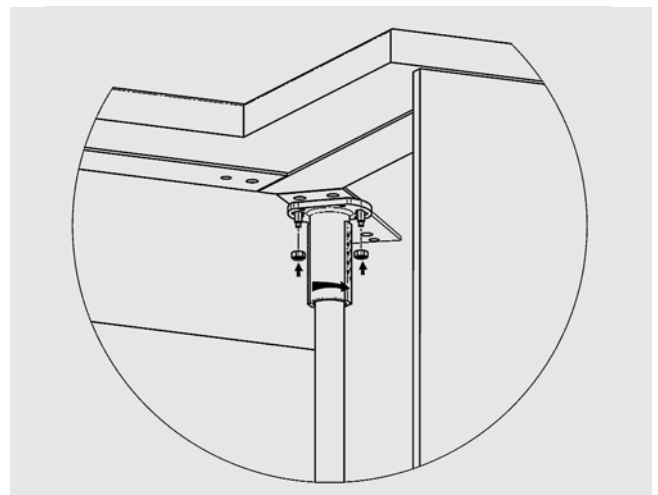
### Mounting the pole

Place the pole with the upper pole bearing into the cam plate. Push both connection rods completely to rear while turning the pole approx. 90° to the left until the guide roller is positioned on the outer edge of the cam plate and the axle firmly clicks into position. This prevents lifting of the pole out of the cam plate.



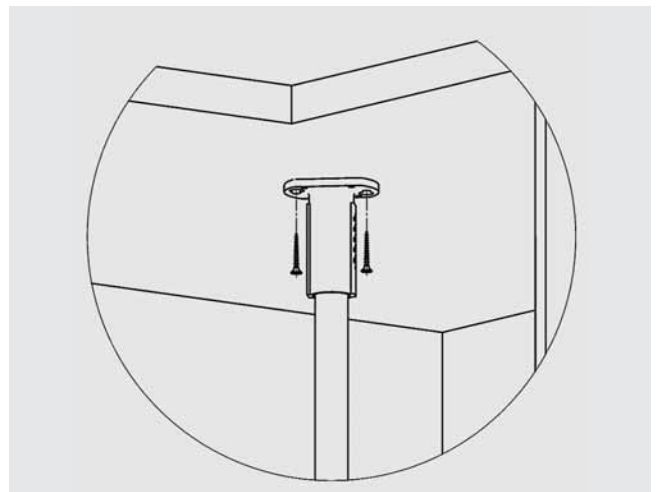
### Connecting the upper pole bearing

Now connect the upper pole bearing to either the top mounting bracket (frameless cabinets with specified top mounting bracket) or . . .



to the cabinet top (face frame cabinet without specified top mounting bracket) and fasten with screws (customer supplied).

The pole should now easily turn 360 degrees.

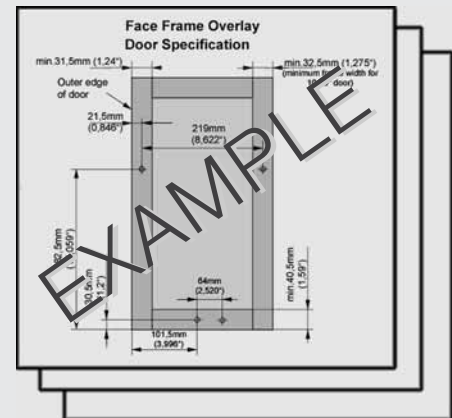


## 5. Mounting doors

### Preparing doors

Drill 4 holes into the doors according to the illustration included in the fitting instructions.

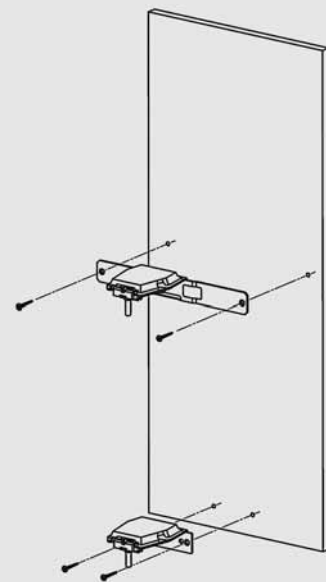
### Specification Document



### Screwing door brackets onto the doors

First screw the lower door brackets (unhanded) and then the upper door brackets (left and right!) onto the doors (customer supplied).

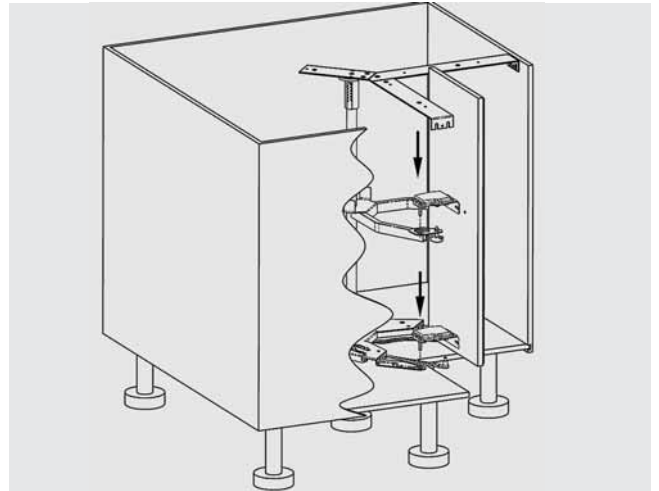
**You can identify the left and the right upper door bracket, as the upper and lower door brackets have to be vertically aligned at each door. The lower door brackets are the same for left and right side.**



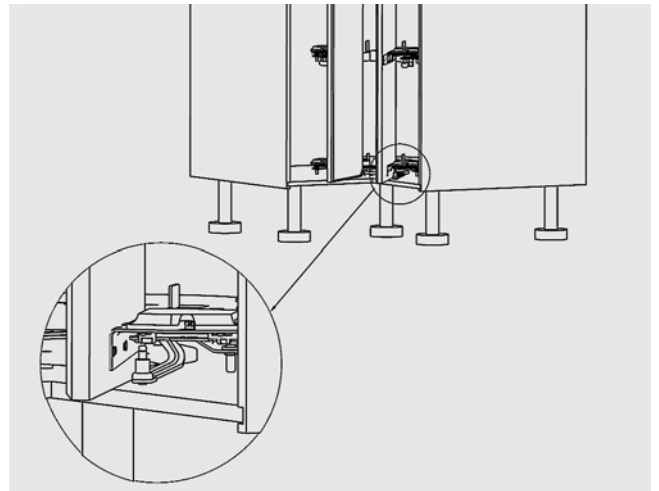
## 5. Mounting doors

### **Hanging doors onto the door holders:**

Hang doors onto upper door holder and lower door holders with the locating pins.



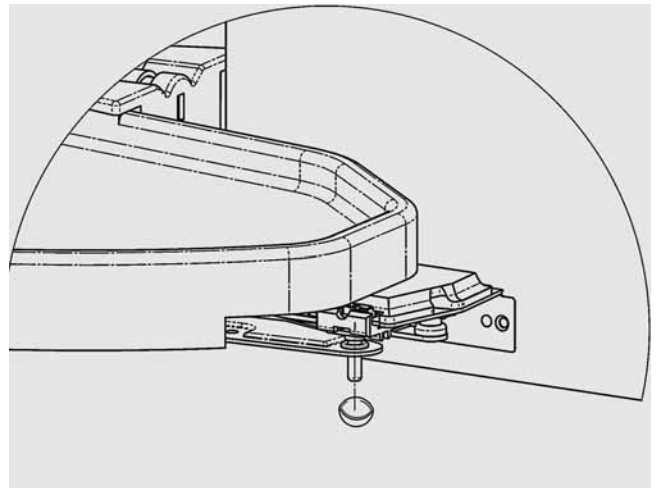
Clip the connecting rods into the bottom door bracket.



### **Securing the door**

To avoid unintended unhinging of the door, attach securing caps onto lower locating pin.

NOTE - Securing caps are permanent.  
Install after final adjustment.

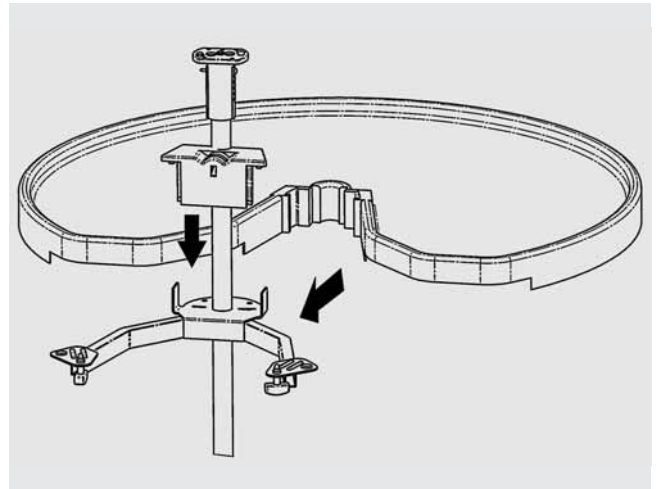




## 6. Mounting shelves / Fixing transport lock

### **Plastic Shelves, Arena Shelves, Chrome/Wire Shelves or Pro Arc Shelves:**

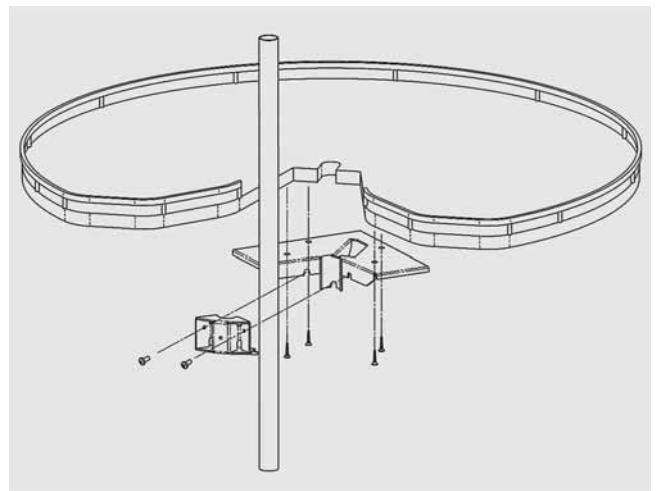
Attach shelves to pole according to the mounting instructions supplied with the shelves.



### **Wooden shelves:**

If you use your own wooden shelves, you need shelf supports supplied by Häfele.

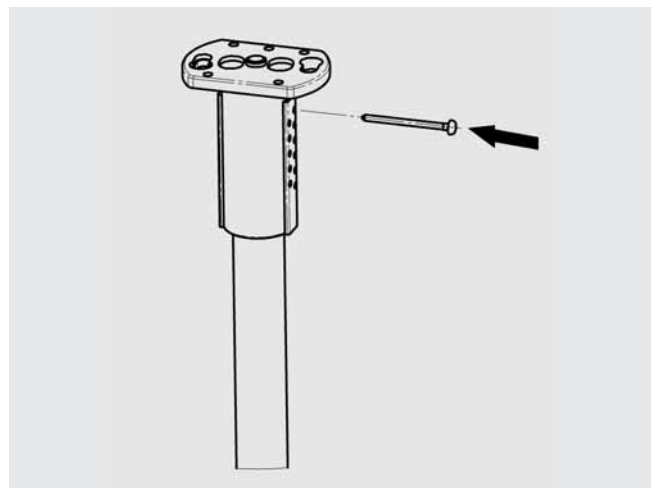
Fasten the wooden shelves with screws to the supports and attach the support to the pole.



### **Transport Lock:**

Insert transport securing pin through the upper pole bearing directly above the pole. This is to prevent damage during shipping.

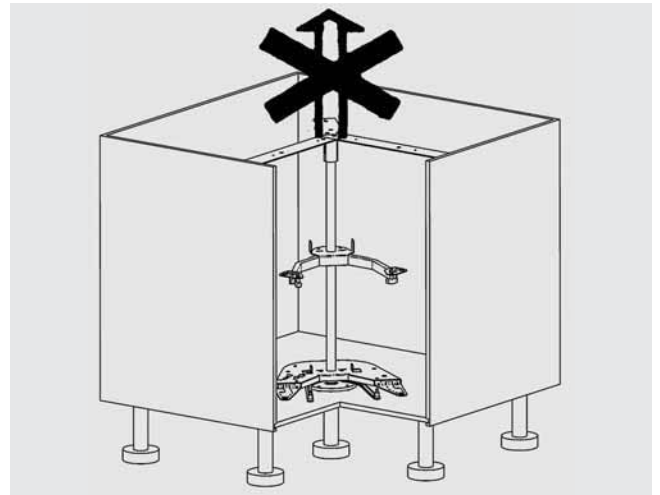
**Important!**  
**Remove securing pin prior to operation.**



## 7. Mounting of support device / Transport notices

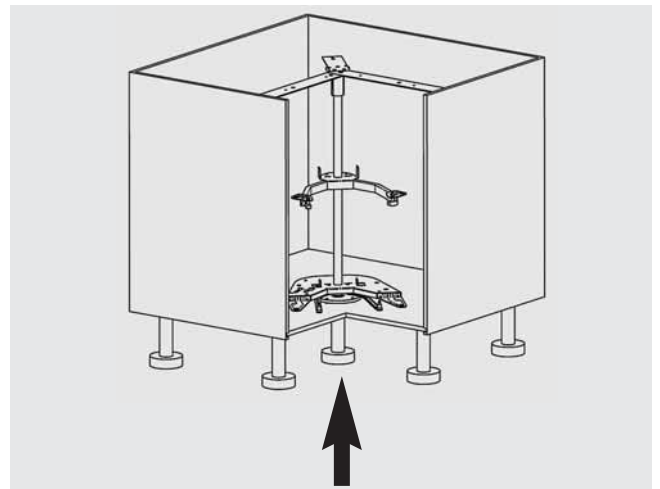
### If you use a top mounting bracket:

Do not suspend the cabinet from the top mounting bracket. Do not bend the top mounting bracket. Do not put weight on the top mounting bracket (i.e. do not stack other cabinets on top for transport).



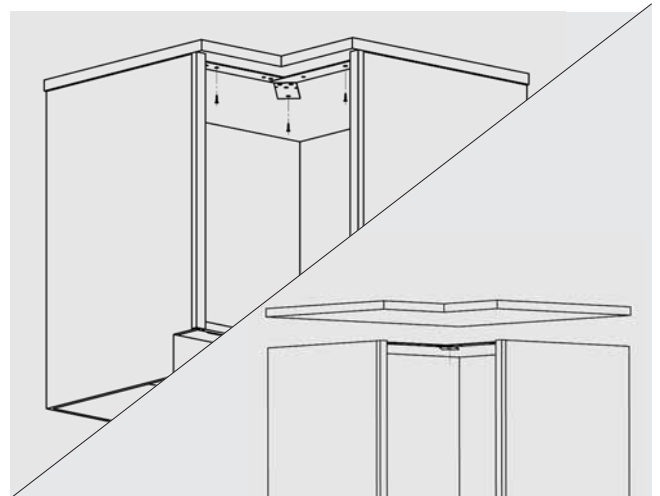
### Mounting of support device:

Please put a support device (i.e. socket foot, extended toe kick) underneath the cabinet bottom (pole) in order to avoid a sagging of the bottom under the weight of the trays, which may cause a malfunction of the fitting.



### Screwing the top mounting bracket to the countertop:

Use adhesive (as recommended by countertop supplier) in order to attach the top mounting bracket to the countertop.



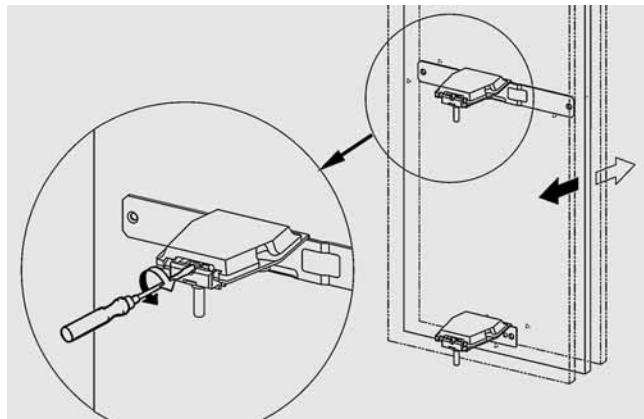
## 8. Adjusting the doors

### Adjusting the Doors:

The doors can be adjusted independently in all directions. Before making adjustments, make sure the corner cabinet is aligned exactly. If you use adjustable cabinet feet, special attention should be paid to adjusting the middle foot for support of the pole weight. When adjusting, first correctly align the right door following the steps illustrated below. Then adjust the left door in the same sequence.

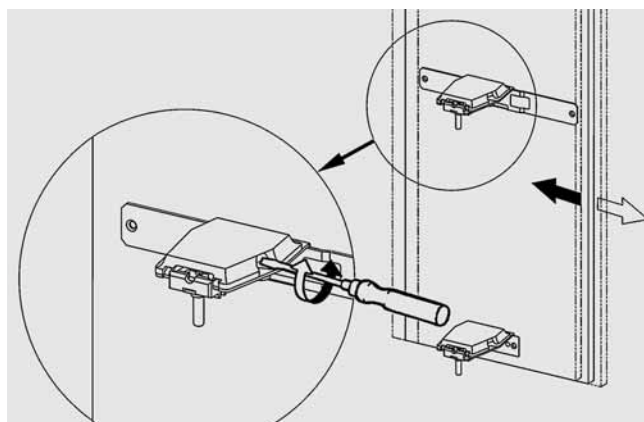
#### 1. Depth adjustment:

Depth adjustment – aligns the doors to the cabinet face.



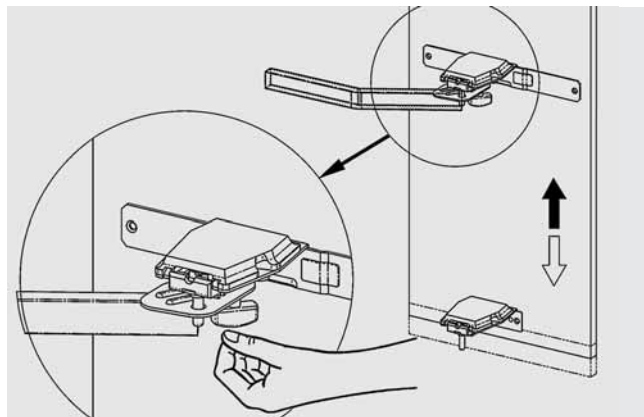
#### 2. Side adjustment:

Side adjustment: adjusts the door overlay.



#### 3. Height adjustment:

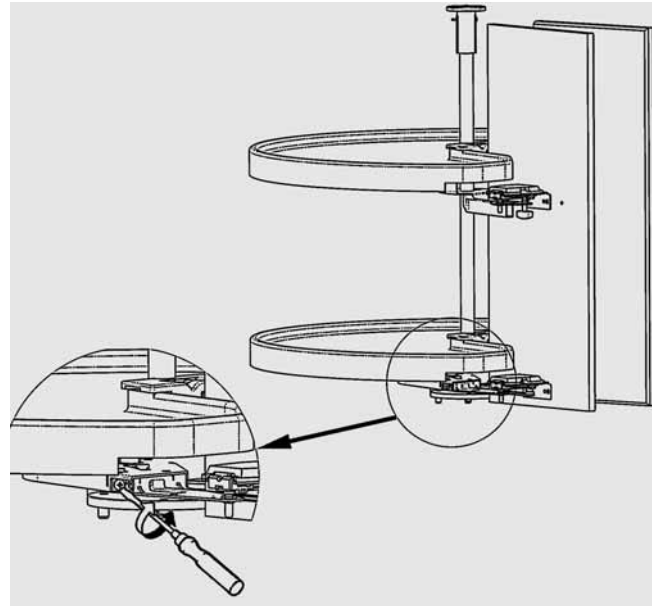
Height adjustment: adjusts the distance between the door and the countertop.



# Adjusting closing speed of doors

## Closing Speed of Doors:

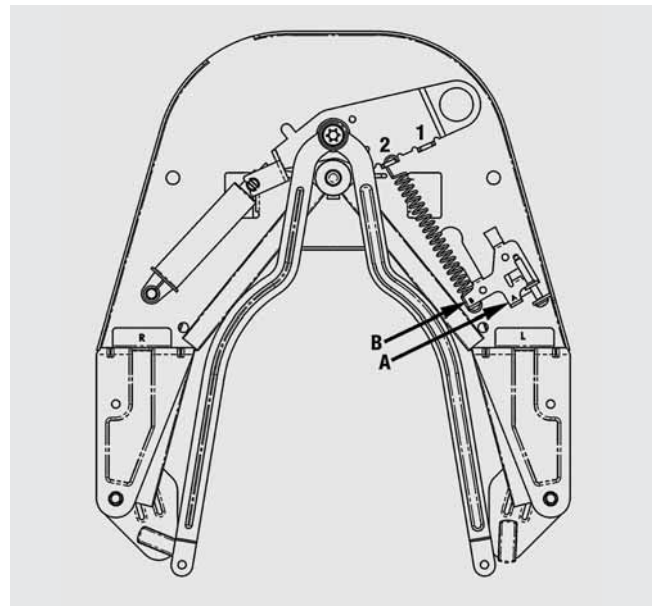
You can adjust the closing speed of the doors without removing the fitting. Turn adjustment screw clockwise for quicker door-closing. For slower door-closing, turn adjustment screw counterclockwise.



Further increase in the closing force can be achieved by repositioning the tension spring.

Four combinations can be chosen:  
B-1= weakest spring force. This is increased through the combinations A-1, B-2 to the strongest spring force of A-2.

The tension spring can only be repositioned when the fitting is removed.



**HÄFELE**

3901 Cheyenne Drive  
P.O. Box 4000  
Archdale, NC 27263  
**1-800-423-3531**  
**www.hafele.com**