

Table of Contents

Electric Strikes

HES 1006	2
HES 1500	4
HES 1600	5
HES 4500	7
HES 5000, 5200	8
HES 7000	10
HES 7501	11
HES 8000, 8300	12
HES 8500	13
HES 9400, 9500, 9600, 9700	14
HES Folger Adam SB:310-1(X), 310-2	15
HES Folger Adam 310-2 3/4, 310-2 3/4 OB	16
HES Folger Adam 310-3-1	17
HES Folger Adam 310-4, 310-4 (S)	18
HES Folger Adam 310-4-X	19
HES Folger Adam 310-6-X	22
HES Folger Adam 310-1-X	25
HES Folger Adam 712, 712-75	27
HES Folger Adam 732, 732-75	28
HES Folger Adam SB710, SB710-75	30
HES Folger Adam SB730, SB730-75	31
HES Folger Adam 742-75	32
HES Folger Adam SB740-75	33
Electric Strike Accessories	34
Securitron UNL, MUNL	35

Magnalocks

Intelligent Magnalocks	
Securitron M370, M380	36
Securitron M680E EcoMag	36
Delayed Egress Magnalocks	
Securitron iMXDa	37
Durable Magnalocks	
Securitron M32	37
Securitron M62	38
Securitron M82	38
Securitron M32, M62 M82 Brackets	39
Securitron M32, M62 M82 Accessories	40
Securitron M38	41
Securitron M68	41
Securitron Universal Magnalock Accessories	42
Securitron DM62	43
Shear Aligning Magnalocks	
Securitron SAM, SAM2, M34R	43
Securitron SAM, M34R Accessories	44
Specialty Magnalocks	
Securitron MM15	44
Securitron MCL Cabinet Lock	45

Cabinet Locks

HES 610	46
HES 660	46
HES K100-622H Aperio Cabinet Lock	47
HES KS100-640H Aperio Server Cabinet Lock	47
HES K200 Wiegard Cabinet Lock	48
HES KS200 Wiegard Server Cabinet Lock	48

Specialty Locks

Securitron GL1 Gate Lock	49
--------------------------	----

Keypads & Readers

Stand Alone Keypads	
Securitron DK-12	50
Keypad System	
Securitron DK-16	50
Securitron DK-26	50
Wiegard Keypads	
Securitron DK-37	51
Securitron DK-38	51
Aperio Card Reader	
Securitron R100-1H	51

Push Buttons & Egress Devices

Securitron WSS Wave Switch	52
Emergency Exit Buttons	
Securitron EEB	52
Securitron PB	53
Securitron PB2	53
Push Buttons	
Securitron PB3	54
Securitron PB4L	54
Securitron PB5	55
—	
Securitron SP-1 Capacative Button	55
Securitron MK Mortise Key Switch	55
Securitron KP-1 Tubular Key Switch	56
Securitron XMS Exit Motion Sensor	56
Egress Bars	
Securitron DSB	57
Securitron TSB	58
Securitron EMB	59
Egress Handles	
Securitron TSH	60
Securitron EMH	60

Power

Securitron BPS Linear Power Supplies	61
Securitron Switching Power Supplies	62
Securitron EcoPower®	64
Securitron BPSS Solar Power Supplies	64
Securitron AQE PoE Power Supplies	64
Securitron PSP Plug-In Power Supplies	65

Power Transfers

Securitron CEPT, ICPT, EPT, SEPT Concealed Power Transfers	66
Securitron EH Electric Hinges	67
Securitron TSB Door Cards	67

Accessories

Securitron TM-2, TM-9, DT-7 & PZ1 Timers & Alarms	68
Securitron DPS Door Position Switch	68
Securitron BA-DPA Door Prop Alarm	68
Securitron MSS Maximum Security Switches	69
Securitron LM Latch Monitoring	69
Securitron RLP, RB-4 Relays	69

Terms & Conditions

Terms & Conditions, Warranties	70
--------------------------------	----

HES 1006



1006 Complete Pacs for Latchbolt Locks

MODELS & FINISHES	630
1006CLB	\$565
1006CLB-F (Fail Safe)	\$565
1006CLB-LBM	\$679
1006CLB-F-LBM (Fail Safe)	\$679
1006CLB-LBSM	\$692
1006CLB-F-LBSM (Fail Safe)	\$692

1006 Complete Pacs for Locks with Deadbolts

MODELS & FINISHES	630
1006CDB	\$587
1006CDB-F (Fail Safe)	\$587
1006CAS	\$587
1006CAS-F (Fail Safe)	\$587
1006CAS-2	\$610
1006CAS-2-F (Fail Safe)	\$610

1006 Complete Pacs for Latchbolt Locks & Deadbolts

MODELS & FINISHES	630
1006CS	\$622
1006CS-F (Fail Safe)	\$622

1006 Integrated Electric Strike Kits with HID 125 kHz Prox Reader

MODELS & FINISHES	630
RF1016	\$888
RF1016-F	\$888

1006 Integrated Electric Strike Kits with HID 13.56 MHz iClass Reader

MODELS & FINISHES	630
IC1026	\$939

1006 Electric Strike Bodies

MODELS & FINISHES	630	BLK	613	605	606, 612, 629
1006	\$531	\$526	\$551	\$605	\$591
1006-F (Fail Safe)	\$531	\$526	\$551	\$605	\$591
1006-LBM	\$646	\$640	\$665	\$720	\$705
1006-F-LBM (Fail Safe)	\$646	\$640	\$665	\$720	\$705
1006-LBSM	\$658	\$653	\$675	\$731	\$716
1006-F-LBSM (Fail Safe)	\$658	\$653	\$675	\$731	\$716

HES 1006



1006 Faceplates

OPTIONS	DESCRIPTION	630	BLK	613	605	606, 612, 629
LB	kit includes J, KM and KD faceplates	\$34	—	—	—	—
DB	kit includes faceplates and brackets to make N and H series options	\$56	—	—	—	—
E		\$50	\$65	\$65	\$94	\$83
R		\$50	\$65	\$65	\$94	\$83
Z		\$34	\$50	\$50	\$94	\$83
J-2		\$65	\$81	\$81	\$104	\$91
KM-2		\$65	\$81	\$81	\$104	\$91
DB-2	kit includes faceplates and brackets to make N-2 and H-2 series Options	\$80	—	—	—	—

1006 Tier Two Faceplates

OPTIONS	630	BLK	613	605	606, 612, 629
J	\$33	\$49	\$49	\$93	\$82
KD, KM	\$33	\$49	\$49	\$93	\$82
ND, NM	\$50	\$65	\$65	\$94	\$83
HM, HTD	\$50	\$65	\$65	\$94	\$83

1006 Accessories

MODEL	DESCRIPTION	PRICE
157	Torx screws	\$13
1000-102	Rain guard	\$32
1006-103	Full keeper shims	\$11
1000-104	Lip extension trim adapter (BLK)	\$59
1006-105	Trim enhancer (BLK)	\$30
1006-109	Trim adapter (BLK)	\$41
1000-110	Replacement strike plate	\$96
1000-130	KD filler plate	\$43

HOW TO ORDER *Specify quantity and the following information. Order related products separately.*

SERIES	MODEL	FAIL SAFE/ SECURE	FINISH*	OPTION(S)
1006	—	— F	— 630	— LBM
1006 Universal Electric Strike Faceplates ordered separately	CS Complete Electric Strike; Includes the SMART Pac II and J, KD, KM, HM, and AD faceplates	F Fail Safe/Secure	605 Bright Brass	LBM Latchbolt Monitor
			606 Satin Brass	
	CLB Complete Electric Strike for Latchbolt Locks; Includes the J, K, KD, and KM faceplates	(blank) Fail Secure (standard)	612 Satin Bronze	LBSM Latchbolt Strike Monitor
			613 Bronze Toned	
CDB Complete Electric Strike for Deadbolt Locks; Includes the HM and AD faceplates		629 Bright Stainless Steel		
CAS Complete Electric Strike for Deadbolt Locks; Includes the ND and NM faceplates		630 Satin Stainless Steel		

*Complete Pacs are only available in the 630 finish

HES 1500



1500 Complete Pacs for Latchbolt Locks

MODELS & FINISHES	DESCRIPTION	630	BSP	613E	605	606, 612, 629
1500C		\$520	\$551	\$551	\$593	\$579
1500C-LM	lock monitor	\$621	\$654	\$654	\$694	\$680
1500C-DLM	dual lock monitors	\$722	\$757	\$757	\$795	\$781
1500C-LMS	lock monitor & strike monitor	\$631	\$664	\$664	\$704	\$690
1500C-DLMS	dual lock monitors & strike monitor	\$732	\$767	\$767	\$805	\$791

Complete electric strike kit includes faceplates that accommodate 1J, 1K, 1KD or 1KM options

1500 Electric Strike Bodies

MODELS & FINISHES	DESCRIPTION	630	BSP	613E	605	606, 612, 629
1500		\$480	\$510	\$510	\$552	\$538
1500-LM	lock monitor	\$581	\$613	\$613	\$653	\$639
1500-DLM	dual lock monitors	\$682	\$716	\$716	\$754	\$740
1500-LMS	lock monitor & strike monitor	\$591	\$623	\$623	\$664	\$649
1500-DLMS	dual lock monitors & strike monitor	\$692	\$726	\$726	\$765	\$750

1500 Faceplates

OPTIONS	DESCRIPTION	630	BSP	613E	605	606, 612, 629
1LB	kit includes 1J, 1K, 1KD and 1KM faceplates	\$40	\$62	\$62	\$81	\$76
1LB-2	kit includes 1J-2 & 1KM-2 faceplates	\$66	\$88	\$88	\$106	\$101

1500 Accessories

MODELS	DESCRIPTION	630	BSP	613E	605	606, 612, 629
157	Torx Screws	\$13	—	—	—	—
1500-104-XXX	Lip extension trim adapter (finish to match)	\$35	\$57	\$57	\$76	\$71
1500-106-XXX	4500 Filler plates and trim enhancer kit (finish to match)	\$29	\$50	\$50	\$70	\$65
OPT-1SRK	Optional spring replacement kit	\$45	—	—	—	—
OPT-1LM	Optional kit includes single lock monitor	\$101	—	—	—	—
OPT-1DLM	Optional kit includes dual lock monitors	\$202	—	—	—	—
MOD-1SOL	Solenoid replacement module	\$278	—	—	—	—

HOW TO ORDER *Specify quantity and the following information. Order related products separately.*

SERIES	MODEL	FINISH	OPTION(S)*
1500	—	— 630	— LM
1500 Universal Electric Strike; Faceplate option kits ordered separately	C Complete Electric Strike; Includes 1LB faceplate kit for latchbolts	605 Bright Brass	LM Lock Monitor
		606 Satin Brass	DLM Dual Lock Monitor
		612 Satin Bronze	LMS Lock Monitor and Strike Monitor
		613 Bronze Toned	DLMS Dual Lock Monitors and Strike Monitor
		613E Dark Oxidized Satin Bronze	OPT-1LM Single Lock Monitor
		629 Bright Stainless Steel	OPT-1DLM Dual Lock Monitors
		630 Satin Stainless Steel	
BSP Black Suede Powder			

*LMS/DLMS factory installed only option

HES 1600



1600 Complete Pacs for Latchbolt Locks

MODELS & FINISHES	DESCRIPTION	630	BSP	613E	605	606, 612, 629
1600-CLB		\$520	\$551	\$551	\$593	\$579
1600-CLB-LM	lock monitor	\$621	\$654	\$654	\$694	\$680
1600-CLB-DLM	dual lock monitors	\$722	\$757	\$757	\$795	\$781
1600-CLB-LMS	lock monitor & strike monitor	\$631	\$664	\$664	\$704	\$690
1600-CLB-DLMS	dual lock monitors & strike monitor	\$732	\$767	\$767	\$805	\$791

Electric strike complete with LB option includes faceplates that accommodate 1J, 1K, 1KD or 1KM options

1600 Complete Pacs for Locks with Deadbolts

MODELS & FINISHES	DESCRIPTION	630	BSP	613E	605	606, 612, 629
1600-CDB		\$520	\$551	\$551	\$593	\$579
1600-CDB-LM	lock monitor	\$621	\$654	\$654	\$694	\$680
1600-CDB-DLM	dual lock monitors	\$722	\$757	\$757	\$795	\$781
1600-CDB-LMS	lock monitor & strike monitor	\$631	\$664	\$664	\$704	\$690
1600-CDB-DLMS	dual lock monitors & strike monitor	\$732	\$767	\$767	\$805	\$791

Electric strike complete with DB option includes faceplates that accommodate 1N, 1ND, 1NM OR 1NTD options

1600 Complete Pacs for Latchbolt Locks & Deadbolts

MODELS & FINISHES	DESCRIPTION	630	BSP	613E	605	606, 612, 629
1600-CS		\$581	\$613	\$633	\$694	\$752
1600-CS-LM	lock monitor	\$682	\$716	\$736	\$795	\$853
1600-CS-DLM	dual lock monitors	\$783	\$819	\$839	\$896	\$954
1600-CS-LMS	lock monitor & strike monitor	\$692	\$726	\$747	\$805	\$864
1600-CS-DLMS	dual lock monitors & strike monitor	\$793	\$829	\$850	\$906	\$965

Electric strike complete with options to accommodate most latchbolts and deadbolts; includes faceplates and bracket to accommodate 1J, 1K, 1KD, 1KM, 1N, 1ND, 1NM or 1NTD options

1600 Electric Strike Bodies

MODELS & FINISHES	DESCRIPTION	630	BSP	613E	605	606, 612, 629
1600		\$480	\$510	\$510	\$552	\$538
1600-LM	lock monitor	\$581	\$613	\$613	\$653	\$639
1600-DLM	dual lock monitors	\$682	\$716	\$716	\$754	\$740
1600-LMS	lock monitor & strike monitor	\$591	\$623	\$623	\$664	\$649
1600-DLMS	dual lock monitors & strike monitor	\$692	\$726	\$726	\$765	\$750

COMING SOON: 1500E and 1600E EcoStrike™ Series; please contact your Sales Representative for product details, availability and pricing.

HES 1600



1600 Faceplates

OPTIONS	DISCRIPTION	630	BSP	613E	605	606, 612, 629
1LB	kit includes 1J, 1K, 1KD and 1KM faceplates	\$40	\$62	\$62	\$81	\$76
1LB-2	kit includes 1J-2 & 1KM-2 faceplates	\$66	\$88	\$88	\$106	\$101
1DB	kit includes faceplates and brackets to make 1N, 1ND, 1NM or 1NTD options	\$40	\$62	\$62	\$81	\$76
1DB-2	kit includes faceplates and brackets to make 1N-2 option	\$66	\$88	\$88	\$106	\$101

1600 Accessories

MODELS	DISCRIPTION	630	BSP	613E	605	606, 612, 629
157	Torx Screws	\$13	—	—	—	—
1600-104-XXX	Lip extension trim adapter (finish to match)	\$35	\$57	\$57	\$76	\$71
1600-106-XXX	1006 Filler plate and trim enhancer kit (finish to match)	\$29	\$50	\$50	\$70	\$65
OPT-1SRK	Optional spring replacement kit	\$45	—	—	—	—
OPT-1LM	Optional kit includes single lock monitor	\$101	—	—	—	—
OPT-1DLM	Optional kit includes dual lock monitors	\$202	—	—	—	—
MOD-1SOL	Solenoid replacement module	\$278	—	—	—	—

HOW TO ORDER *Specify quantity and the following information. Order related products separately.*

SERIES	MODEL	FINISH	OPTION(S)*
1600	– CS	– 630	– LM
1600 Universal Electric Strike; Faceplate option kits ordered separately	CS Complete Electric Strike; Includes 1LB faceplate kit for latchbolts and 1DB faceplate kit for deadbolts	605 Bright Brass	LM Lock Monitor
		606 Satin Brass	
	CLB Complete Electric Strike for Latchbolt Locks; Includes 1LB faceplate kit for latchbolts	612 Satin Bronze	DLM Dual Lock Monitor
		613 Bronze Toned	
	CDB Complete Electric Strike for Deadbolt Locks; Includes 1DB faceplate kit for deadbolts	613E Dark Oxidized Satin Bronze	LMS Lock Monitor and Strike Monitor
		629 Bright Stainless Steel	
	630 Satin Stainless Steel	OPT-1LM Single Lock Monitor	
		BSP Black Suede Powder	OPT-1DLM Dual Lock Monitors

*LMS/DLMS factory installed only option

COMING SOON: 1500E and 1600E EcoStrike™ Series; please contact your Sales Representative for product details, availability and pricing.

HES 4500C



4500C Complete Pacs for Latchbolt Locks

MODELS & FINISHES	630	613	605	606	612	629
4500C	\$574	\$608	\$670	\$643	\$643	\$670
4500C-LBM	\$689	\$722	\$783	\$758	\$758	\$783
4500C-LBSM	\$700	\$732	\$795	\$768	\$768	\$795

4500C Integrated Electric Strike Kit with HID 125 kHz Prox Reader

MODELS & FINISHES	630
RF4510	\$931

4500C Integrated Electric Strike Kit with HID 13.56 MHz iClass Reader

MODELS & FINISHES	630
IC4520	\$982

4500C Accessories

MODEL	DISCRIPTION	PRICE
157	Torx screws	\$13
4500-105	Trim enhancer (BLK)	\$30
4500-110	Replacement strike plate	\$91
4500-131	Filler block	\$38
4501-1/2	1/2" stackable lip extension	\$51
4501-1	1" stackable lip extension	\$58

HOW TO ORDER *Specify quantity and the following information. Order related products separately.*

SERIES	FINISH	OPTION(S)
4500C	- 630	- LBM
4500C Complete Electric Strike; Includes faceplates for cylindrical and mortise locks	605 Bright Brass	LBM Latchbolt Monitor
	606 Satin Brass	LBSM Latchbolt Strike Monitor
	612 Satin Bronze	
	613 Bronze Toned	
	629 Bright Stainless Steel	
	630 Satin Stainless Steel	

HES 5000, 5200



5000, 5200 Complete Pacs for Latchbolt Locks

MODELS & FINISHES	630
5000C	\$188
5000C-LBM	\$258
5200C	\$191
5200C-LBM	\$261
5200C-LBSM	\$283

5000, 5200 Integrated Electric Strike Kit with HID 125 kHz Prox Reader

MODELS & FINISHES	630
RF5010	\$527
RF5210	\$530

5000, 5200 Integrated Electric Strike Kit with HID 13.56 MHz iClass Reader

MODELS & FINISHES	630
IC5020	\$578
IC5220	\$581

5000, 5200 Electric Strike Bodies

MODELS & FINISHES	PRICE
5000	\$170
5000-LBM	\$242
5200	\$173
5200-LBM	\$245
5200-LBSM	\$265

HES 5000, 5200



5000, 5200 Faceplates

OPTIONS	630	BLK	613	605	606	612	629
501	\$18	\$38	\$38	\$62	\$45	\$45	\$62
501A	\$23	\$41	\$41	\$66	\$48	\$48	\$66
502	\$41	\$54	\$54	\$79	\$65	\$65	\$79
503	\$41	\$54	\$54	\$79	\$65	\$65	\$79
504	\$41	\$54	\$54	\$79	\$65	\$65	\$79

5000, 5200 Accessories

MODEL	DISCRIPTION	PRICE
157	Torx screws	\$13
5000-105	Trim enhancer (goof plate)	\$30
5104-1/2	1/2" stackable lip extension	\$50
5104-1	1" stackable lip extension	\$56
5104-1-1/4	1-1/4" stackable lip extension	\$58
5200-105	Trim enhancer (goof plate)	\$30
5200-500	Filler block	\$53
5204-1/2	1/2" stackable lip extension	\$50
5204-1	1" stackable lip extension	\$56
5204-1-1/4	1-1/4" stackable lip extension	\$58

HOW TO ORDER <i>Specify quantity and the following information. Order related products separately.</i>			
SERIES	MODEL	FINISH*	OPTION(S)
5000, 5200	—	– 630	– LBM
5000, 5200 Universal Electric Strike; Faceplates ordered separately	C Complete Electric Strike; Includes the 501 and 501A faceplates	605 Bright Brass	LBM Latchbolt Monitor
		606 Satin Brass	
		612 Satin Bronze	LBSM Latchbolt Strike Monitor
		613 Bronze Toned	
		629 Bright Stainless Steel	
		630 Satin Stainless Steel	
		BLK Black	

*Complete Pacs are only available in the 630 finish

HES 7000



7000 Complete Pacs for Latchbolt Locks

MODELS & FINISHES	630
7000C	\$295
7000C-LBM	\$404

7000 Integrated Electric Strike Kits with HID 125 kHz Prox Reader

MODELS & FINISHES	630
RF7010	\$595

7000 Integrated Electric Strike Kits with HID 13.56 MHz Prox Reader

MODELS & FINISHES	630
IC7020	\$646

7000 Electric Strike Bodies

MODELS & FINISHES	PRICE
7000	\$238
7000-LBM	\$346

7000 Faceplates

CYLINDRICAL LOCK OPTIONS	630	BLK	613E	605	606	612	629
791	\$57	\$73	\$73	\$100	\$84	\$84	\$100
792	\$57	\$73	\$73	\$100	\$84	\$84	\$100
RIM EXIT DEVICES OPTIONS	630	BLK	613E	605	606	612	629
783S	\$143	—	\$210	—	—	—	—
786S	\$160	—	\$237	—	—	—	—
789S	\$160	—	\$237	—	—	—	—

7000 Accessories

MODEL	DISCRIPTION	PRICE
157	Torx screws	\$13
7000-104	Lip extension trim adapter (791 & 792 options only)	\$30
7000-105	Trim enhancer (goof plate) (791 & 792 options only)	\$30
7000-106	Keeper pocket adapter (783S & 789S options only)	\$29
7000-107	Full keeper shim pack	\$16
7000-108	Spacer plate (783S & 789S options, black finish only)	\$32
7000-110	Replacement strike plate (701 option only)	\$100
7000-SMB	Surface mounting box (783S and 789S options only)	\$203

HES 7000

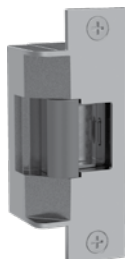


HOW TO ORDER *Specify quantity and the following information. Order related products separately.*

SERIES	MODEL	FINISH*		OPTION(S)
7000	—	– 630		– LBM
		791 AND 792 OPTIONS	7835, 7865, 7895 OPTIONS	
7000 Universal Electric Strike; Faceplates ordered separately	C Complete Electric Strike; Includes the 791 and 792 faceplates	605 Bright Brass 606 Satin Brass	613E Dark Oxidized Satin Bronze	LBM Latchbolt Monitor
		612 Satin Bronze 613E Dark Oxidized Satin Bronze 629 Bright Stainless Steel 630 Satin Stainless Steel BLK Black	630 Satin Stainless Steel	

*Complete Pacs are only available in 630 finish

HES 7501



7501 Complete Electric Strike Kits

MODELS & FINISHES	630	613	605	606	612	629
7501	\$588	\$623	\$686	\$658	\$658	\$686
7501-LBM	\$703	\$738	\$802	\$773	\$773	\$802

7501 Integrated Electric Strike Kits with HID 125 kHz Prox Reader

MODELS & FINISHES	630
RF7510	\$945

7501 Integrated Electric Strike Kits with HID 13.56 MHz Prox Reader

MODELS & FINISHES	630
IC7520	\$996

HOW TO ORDER *Specify quantity and the following information. Order related products separately.*

SERIES	FINISH	OPTION(S)
7501	– 630	– LBM
7501 Universal Electric Strike; Includes faceplate for cylindrical locksets	605 Bright Brass 606 Satin Brass 612 Satin Bronze 613 Bronze Toned 629 Bright Stainless Steel 630 Satin Stainless Steel	LBM Latchbolt Monitor

HES 8000, 8300



8000, 8300 Complete Pacs for Latchbolt Locks

MODELS & FINISHES	630
8000C	\$236
8000C-LBM	\$348
8300C	\$525
8300C-LBM	\$635

8000, 8300 Electric Strike Bodies

MODELS & FINISHES	PRICE
8000	\$206
8000-LBM	\$320
8300	\$495
8300-LBM	\$606

8000, 8300 Faceplates

OPTIONS	630	BLK	613	605	606	612	629
801	\$30	\$45	\$45	\$71	\$56	\$56	\$71
801A	\$35	\$49	\$49	\$76	\$62	\$62	\$76
801E	\$30	\$45	\$45	\$71	\$56	\$56	\$71
802	\$48	\$67	\$67	\$92	\$75	\$75	\$92
803	\$48	\$67	\$67	\$92	\$75	\$75	\$92
805	\$48	\$67	\$67	\$92	\$75	\$75	\$92

HES 8000, 8300



8000, 8300 Integrated Electric Strike Kits with HID 125 kHz Prox Reader

MODELS & FINISHES	630
RF8010	\$565
RF8310	\$857

8000, 8300 Integrated Electric Strike Kits with HID 13.56 MHz Prox Reader

MODELS & FINISHES	630
IC8020	\$616
IC8320	\$908

HOW TO ORDER *Specify quantity and the following information. Order related products separately.*

SERIES	MODEL	FINISH*	OPTION(S)
8000	—	— 630	— LBM
8000, 8300 Universal Electric Strike; Faceplates ordered separately	C Complete Electric Strike; Includes the 801 and 5801A faceplates	605 Bright Brass	LBM Latchbolt Monitor
		606 Satin Brass	
		612 Satin Bronze	
		613 Bronze Toned	
		629 Bright Stainless Steel	
		630 Satin Stainless Steel	
		BLK Black	

*Complete Pacs are only available in the 630 finish

HES 8500



8500 Electric Strike Bodies

MODELS & FINISHES	630	613	605	606	612	629
8500	\$500	\$534	\$591	\$565	\$565	\$591
8500-LBM	\$612	\$644	\$701	\$676	\$676	\$701
8500-LBSM	\$623	\$655	\$711	\$686	\$686	\$711

8500 Integrated Electric Strike Kits with HID 125 kHz Prox Reader

MODELS & FINISHES	630
RF8510*	\$862

*Faceplate ordered separately

8500 Integrated Electric Strike Kits with HID 13.56 MHz Prox Reader

MODELS & FINISHES	630
IC8520*	\$913

*Faceplate ordered separately

8500 Faceplates

OPTIONS	630	613	605	606	612	629
851M, 852M, 852L, 852K	\$38	\$57	\$82	\$65	\$65	\$82

HOW TO ORDER <i>Specify quantity and the following information. Order related products separately.</i>			
SERIES	MODEL	FINISH*	OPTION(S)
8500	—	— 630	— LBM
8500 Universal Electric Strike; Faceplates ordered separately	C Complete Electric Strike; Includes the 801 and 5801A faceplates	605 Bright Brass	LBM Latchbolt Monitor
		606 Satin Brass	
		612 Satin Bronze	LBSM Latchbolt Strike Monitor
		613 Bronze Toned	
		629 Bright Stainless Steel	
		630 Satin Stainless Steel	
BLK Black			

*Complete Pacs are only available in the 630 finish

HES 9400, 9500, 9600, 9700



9000 Series Surface Mounted Electric Strikes for Rim Exit Devices

MODELS & FINISHES	630	613E	613	605	606	612	629
9400	\$495	\$527	\$568	\$581	\$568	\$568	\$581
9400-LBM	\$605	\$636	\$678	\$690	\$678	\$678	\$690
9400-LBSM	\$615	\$646	\$688	\$701	\$688	\$688	\$701
9500	\$577	\$608	\$653	\$665	\$653	\$653	\$665
9500-LBM	\$686	\$717	\$763	\$774	\$763	\$763	\$774
9500-LBSM	\$697	\$728	\$773	\$785	\$773	\$773	\$785
9600	\$495	\$527	\$568	\$581	\$568	\$568	\$581
9600-LBM	\$605	\$636	\$678	\$690	\$678	\$678	\$690
9600-LBSM	\$615	\$646	\$688	\$701	\$688	\$688	\$701
9700	\$579	\$610	\$657	\$668	\$657	\$657	\$668
9700-LBM	\$689	\$720	\$766	\$777	\$766	\$766	\$777
9700-LBSM	\$699	\$731	\$776	\$789	\$776	\$776	\$789

9000 Series Integrated Electric Strike Kits with HID 125 kHz Prox Reader

MODELS & FINISHES	630
RF-9400	\$857
RF-9500	\$930
RF-9600	\$848

9000 Series Integrated Electric Strike Kits with HID 13.56 MHz Prox Reader

MODELS & FINISHES	630
IC-9400	\$899
IC-9500	\$981
IC-9600	\$899

9000 Series Accessories

MODELS & FINISHES	DISCRIPTION	PRICE
9000 series 108-BLK	Spacer plate (black)	\$30
9000 series 108-630	Spacer plate (stainless steel)	\$30
9000-MTK	Metal template installation kit	\$62
7000-SMB	Surface mounting box	\$203

HOW TO ORDER *Specify quantity and the following information. Order related products separately.*

SERIES	FINISH	OPTION(S)	
9600	– 630		
	– LBM		
	9400, 9500, 9600, 9700	605 Bright Brass	LBM Latchbolt Monitor
	Surface-Mounted Electric Strike; no faceplates required	606 Satin Brass	
		612 Satin Bronze	LBSM Latchbolt Strike Monitor
		613 Bronze Toned	
		613E Dark Oxidized Satin Bronze	
629 Bright Stainless Steel			
630 Satin Stainless Steel			

HES Folger Adam SB:310-1(X), 310-2



SB: 310-1(X) Electric Strike Bodies

MODELS & FINISHES	(1/2)	(3/4)	-1	(PK)	(SK)
310-1-12D	\$510	\$510	\$510	\$510	\$524
310-1-24D	\$510	\$510	\$510	\$510	\$524
310-1-F-12D (Fail Safe)	\$510	\$510	\$510	\$510	\$524
310-1-F-24D (Fail Safe)	\$510	\$510	\$510	\$510	\$524
310-1-12D-LCBMA	\$638	\$638	\$638	\$638	\$652
310-1-24D-LCBMA	\$638	\$638	\$638	\$638	\$652
310-1-F-12D-LCBMA (Fail Safe)	\$638	\$638	\$638	\$638	\$652
310-1-F-24D-LCBMA (Fail Safe)	\$638	\$638	\$638	\$638	\$652

HOW TO ORDER *Specify quantity and the following information. Order related products separately.*

PREFIX	SERIES	KEEPER STYLE	FAIL SAFE/SECURE	VOLTAGE	OPTION(S)
SB	310-1	(3/4)	- F	- 24D	- LCBMA
STRIKE BODY ONLY					
SB Strike Body	Strike Body Only 310-1	(1/2) 1/2" keeper	(blank) Fail Secure (Standard)	12D 12 Volt	LCBMA Latchbolt & locking cam monitor with auxiliary switch
		(3/4) 3/4" keeper	F Fail Safe	24D 24 Volt	
		(1) 1" keeper			
		(PK) For use with 3/4" Pullman style latchbolts			
		(SK) For use with Squarebolt® style rim exit devices			

310-2 Complete Pacs for Latchbolt Locks

MODELS & FINISHES	630	605	606	612	613	629
310-2-12D	\$645	\$743	\$712	\$712	\$680	\$743
310-2-24D	\$645	\$743	\$712	\$712	\$680	\$743
310-2-F-12D (Fail Safe)	\$645	\$743	\$712	\$712	\$680	\$743
310-2-F-24D (Fail Safe)	\$645	\$743	\$712	\$712	\$680	\$743
310-2-12D-LCBMA	\$773	\$869	\$840	\$840	\$808	\$869
310-2-24D-LCBMA	\$773	\$869	\$840	\$840	\$808	\$869
310-2-F-12D-LCBMA (Fail Safe)	\$773	\$869	\$840	\$840	\$808	\$869
310-2-F-24D-LCBMA (Fail Safe)	\$773	\$869	\$840	\$840	\$808	\$869

310-2 Faceplates

OPTION	630	605	606	612	613	629
FP: 310-2	\$140	\$238	\$208	\$208	\$175	\$238

NOTE: These products will require relocation of the center line when used with mortise locks. Consult customer support regarding use with the Best 40 series.

HES Folger Adam 310-2 3/4, 310-2 3/4OB



310-2 3/4 Complete Pacs for Latchbolt Locks

MODELS & FINISHES	630	605	606	612	613	629
310-2 3/4-12D	\$735	\$830	\$803	\$803	\$770	\$830
310-2 3/4-24D	\$735	\$830	\$803	\$803	\$770	\$830
310-2 3/4-F-12D (Fail Safe)	\$735	\$830	\$803	\$803	\$770	\$830
310-2 3/4-F-24D (Fail Safe)	\$735	\$830	\$803	\$803	\$770	\$830
310-2 3/4-12D-LCBMA	\$861	\$958	\$929	\$929	\$896	\$958
310-2 3/4-24D-LCBMA	\$861	\$958	\$929	\$929	\$896	\$958
310-2 3/4-F-12D-LCBMA (Fail Safe)	\$861	\$958	\$929	\$929	\$896	\$958
310-2 3/4-F-24D-LCBMA (Fail Safe)	\$861	\$958	\$929	\$929	\$896	\$958

310-2 3/4 Faceplates

OPTION	630	605	606	612	613	629
FP: 310-2 3/4	\$231	\$327	\$299	\$299	\$266	\$325

310-2 3/4 OB Complete Pacs for Latchbolt Locks

MODELS & FINISHES	630	605	606	612	613	629
310-2 3/4OB-12D	\$911	\$1,008	\$980	\$980	\$950	\$1,008
310-2 3/4OB-24D	\$911	\$1,008	\$980	\$980	\$950	\$1,008
310-2 3/4OB-F-12D (Fail Safe)	\$911	\$1,008	\$980	\$980	\$950	\$1,008
310-2 3/4OB-F-24D (Fail Safe)	\$911	\$1,008	\$980	\$980	\$950	\$1,008

310-2 3/4 OB Faceplates

OPTION	630	605	606	612	613	629
FP: 310-2 3/4 OB	\$406	\$503	\$475	\$475	\$445	\$503

NOTE: These products will require relocation of the center line when used with mortise locks. Consult customer support regarding use with the Best 40 series.

HES Folger Adam 310-2 3/4OB, 310-3-1



310-3-1 Complete Pacs for Latchbolt Locks & Deadbolts

MODELS & FINISHES	630	605	606	612	613	629
310-3-1-12D	\$923	\$1,018	\$990	\$990	\$958	\$1,018
310-3-1-24D	\$923	\$1,018	\$990	\$990	\$958	\$1,018
310-3-1-F-12D (Fail Safe)	\$923	\$1,018	\$990	\$990	\$958	\$1,018
310-3-1-F-24D (Fail Safe)	\$923	\$1,018	\$990	\$990	\$958	\$1,018
310-3-1-12D-LCBMA	\$1,051	\$1,140	\$1,115	\$1,115	\$1,086	\$1,140
310-3-1-24D-LCBMA	\$1,051	\$1,140	\$1,115	\$1,115	\$1,086	\$1,140
310-3-1-F-12D-LCBMA (Fail Safe)	\$1,051	\$1,140	\$1,115	\$1,115	\$1,086	\$1,140
310-3-1-F-24D-LCBMA (Fail Safe)	\$1,051	\$1,140	\$1,115	\$1,115	\$1,086	\$1,140

310-3-1 Faceplates

OPTION	630	605	606	612	613	629
FP: 310-3-1 (with Plug)	\$419	\$470	\$446	\$446	\$414	\$470

HOW TO ORDER *Specify quantity and the following information. Order related products separately.*

SERIES	FAIL SAFE/SECURE	VOLTAGE	FINISH	OPTION(S)
310-2	- F	- 24D	- 613	- LCBMA
COMPLETE PACS				
310-2	1/2" keeper standard; For up to a 5/8" throw latchbolt	(blank) Fail Secure (Standard)	12D 12 Volt	605 Bright Brass 606 Satin Brass
310-2 3/4	3/4" keeper standard; For up to a 3/4" throw latchbolt without deadbolt	F Fail Safe	24D 24 Volt	612 Satin Bronze 613 Bronze Toned
310-2 3/4OB	3/4" keeper standard; For a pair of doors without a door coordinator			629 Bright Stainless Steel 630 Satin Stainless Steel
310-3-1	1" keeper standard; For up to a 3/4" throw latchbolt and a 1" deadbolt			
*LCBMA not available with 310-2 3/4OB				

HOW TO ORDER *Specify quantity and the following information. Order related products separately.*

PREFIX	SERIES	FINISH
FP	- 310-2 3/4OB	- 630
FACEPLATE ONLY		
FP Faceplate	310-2 1/2" keeper standard; For up to a 5/8" throw latchbolt	605 Bright Brass
	310-2 3/4 3/4" keeper standard; For up to a 3/4" throw latchbolt without deadbolt	606 Satin Brass
	310-2 3/4OB 3/4" keeper standard; For a pair of doors without a door coordinator	612 Satin Bronze
	310-3-1 1" keeper standard; For up to a 3/4" throw latchbolt and a 1" deadbolt	613 Bronze Toned
		629 Bright Stainless Steel
		630 Satin Stainless Steel

NOTE: These products will require relocation of the center line when used with mortise locks. Consult customer support regarding use with the Best 40 series.

HES Folger Adam 310-4, 310-4(S)



310-4 Complete Pacs for Pullman Rim Exit Devices

MODELS & FINISHES	630	605	606	612	613	629
310-4-12D	\$674	\$775	\$746	\$746	\$711	\$775
310-4-24D	\$674	\$775	\$746	\$746	\$711	\$775
310-4-F-12D (Fail Safe)	\$674	\$775	\$746	\$746	\$711	\$775
310-4-F-24D (Fail Safe)	\$674	\$775	\$746	\$746	\$711	\$775
310-4-12D-LCBMA	\$800	\$900	\$872	\$872	\$839	\$900
310-4-24D-LCBMA	\$800	\$900	\$872	\$872	\$839	\$900
310-4-F-12D-LCBMA (Fail Safe)	\$800	\$900	\$872	\$872	\$839	\$900
310-4-F-24D-LCBMA (Fail Safe)	\$800	\$900	\$872	\$872	\$839	\$900

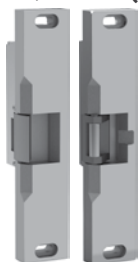
310-4 Faceplates

OPTION	630	605	606	612	613	629
FP: 310-4	\$169	\$270	\$241	\$241	\$206	\$270

310-4(S) Complete Pacs for Squarebolt™ Rim Exit Devices

MODELS & FINISHES	630	605	606	612	613	629
310-4(S)-12D	\$715	\$813	\$784	\$784	\$751	\$813
310-4(S)-24D	\$715	\$813	\$784	\$784	\$751	\$813
310-4(S)-F-12D (Fail Safe)	\$715	\$813	\$784	\$784	\$751	\$813
310-4(S)-F-24D (Fail Safe)	\$715	\$813	\$784	\$784	\$751	\$813
310-4(S)-12D-LCBMA	\$844	\$940	\$911	\$911	\$879	\$940
310-4(S)-24D-LCBMA	\$844	\$940	\$911	\$911	\$879	\$940
310-4(S)-F-12D-LCBMA (Fail Safe)	\$844	\$940	\$911	\$911	\$879	\$940
310-4(S)-F-24D-LCBMA (Fail Safe)	\$844	\$940	\$911	\$911	\$879	\$940

HES Folger Adam 310-4, 310-4(S)



310-4 (S) Faceplates

OPTION	630	605	606	612	613	629
FP: 310-4 (S)	\$197	\$294	\$266	\$266	\$233	\$294

HOW TO ORDER *Specify quantity and the following information. Order related products separately.*

SERIES	FAIL SAFE/SECURE	VOLTAGE	FINISH	OPTION(S)
310-4 (S)	- F	- 12D	- 605	- LCBMA
COMPLETE PACS				
310-4 PK keeper standard; For use with 3/4" Pullman style latchbolts	(blank) Fail Secure (Standard)	12D 12 Volt	605 Bright Brass	LCBMA* Latchbolt & locking
310-4(S) SK keeper standard; For use with Squarebolt® style rim exit devices	F Fail Safe	24D 24 Volt	606 Satin Brass	
			612 Satin Bronze	
			613 Bronze Toned	
			629 Bright Stainless Steel	
			630 Satin Stainless Steel	

HOW TO ORDER *Specify quantity and the following information. Order related products separately.*

PREFIX	SERIES	KEEPER STYLE	FINISH
FP	- 310-4	(SK)	- 630
FACEPLATES ONLY			
FP Faceplate	310-4 PK keeper standard; For use with 3/4" Pullman style latchbolts	(SK) For use with Squarebolt® style rim exit devices	605 Bright Brass
	310-4(S) SK keeper standard; For use with Squarebolt® style rim exit devices		606 Satin Brass
			612 Satin Bronze
			613 Bronze Toned
			629 Bright Stainless Steel
			630 Satin Stainless Steel

Hes Folger Adam 310-4-X



310-4-1 Complete Pacs for Surface Vertical Rods

MODELS & FINISHES	630	605	606	612	613	629
310-4-1-12D	\$1,259	\$1,302	\$1,270	\$1,270	\$1,259	\$1,302
310-4-1-24D	\$1,259	\$1,302	\$1,270	\$1,270	\$1,259	\$1,302
310-4-1-F-12D (Fail Safe)	\$1,259	\$1,302	\$1,270	\$1,270	\$1,259	\$1,302
310-4-1-F-24D (Fail Safe)	\$1,259	\$1,302	\$1,270	\$1,270	\$1,259	\$1,302
310-4-1-12D-LCBMA	\$1,513	\$1,555	\$1,523	\$1,523	\$1,513	\$1,555
310-4-1-24D-LCBMA	\$1,513	\$1,555	\$1,523	\$1,523	\$1,513	\$1,555
310-4-1-F-12D-LCBMA (Fail Safe)	\$1,513	\$1,555	\$1,523	\$1,523	\$1,513	\$1,555
310-4-1-F-24D-LCBMA (Fail Safe)	\$1,513	\$1,555	\$1,523	\$1,523	\$1,513	\$1,555

Vertical Rod spacing between 4" and 4-3/4"

HES Folger Adam 310-4-X



310-4-1 Faceplates

OPTION	630	605	606	612	613	629
FP: 310-4-1	\$351	\$392	\$358	\$358	\$351	\$392

310-4-2 Complete Pacs for Surface Vertical Rods

MODELS & FINISHES	630	605	606	612	613	629
310-4-2-12D	\$1,259	\$1,302	\$1,270	\$1,270	\$1,259	\$1,302
310-4-2-24D	\$1,259	\$1,302	\$1,270	\$1,270	\$1,259	\$1,302
310-4-2-F-12D (Fail Safe)	\$1,259	\$1,302	\$1,270	\$1,270	\$1,259	\$1,302
310-4-2-F-24D (Fail Safe)	\$1,259	\$1,302	\$1,270	\$1,270	\$1,259	\$1,302
310-4-2-12D-LCBMA	\$1,513	\$1,555	\$1,523	\$1,523	\$1,513	\$1,555
310-4-2-24D-LCBMA	\$1,513	\$1,555	\$1,523	\$1,523	\$1,513	\$1,555
310-4-2-F-12D-LCBMA (Fail Safe)	\$1,513	\$1,555	\$1,523	\$1,523	\$1,513	\$1,555
310-4-2-F-24D-LCBMA (Fail Safe)	\$1,513	\$1,555	\$1,523	\$1,523	\$1,513	\$1,555

Vertical Rod spacing between 4-5/8" and 5-3/8"

310-4-2 Faceplates

OPTION	630	605	606	612	613	629
FP: 310-4-2	\$351	\$392	\$358	\$358	\$351	\$392

310-4-3 Complete Pacs for Surface Vertical Rods

MODELS & FINISHES	630	605	606	612	613	629
310-4-3-12D	\$1,259	\$1,302	\$1,270	\$1,270	\$1,259	\$1,302
310-4-3-24D	\$1,259	\$1,302	\$1,270	\$1,270	\$1,259	\$1,302
310-4-3-F-12D (Fail Safe)	\$1,259	\$1,302	\$1,270	\$1,270	\$1,259	\$1,302
310-4-3-F-24D (Fail Safe)	\$1,259	\$1,302	\$1,270	\$1,270	\$1,259	\$1,302
310-4-3-12D-LCBMA	\$1,513	\$1,555	\$1,523	\$1,523	\$1,513	\$1,555
310-4-3-24D-LCBMA	\$1,513	\$1,555	\$1,523	\$1,523	\$1,513	\$1,555
310-4-3-F-12D-LCBMA (Fail Safe)	\$1,513	\$1,555	\$1,523	\$1,523	\$1,513	\$1,555
310-4-3-F-24D-LCBMA (Fail Safe)	\$1,513	\$1,555	\$1,523	\$1,523	\$1,513	\$1,555

Vertical Rod spacing between 5-1/4" and 6"

310-4-3 Faceplates

OPTION	630	605	606	612	613	629
FP: 310-4-3	\$411	\$453	\$421	\$421	\$411	\$453

INSTALLATION NOTE: Double-door models are available with four different center-to-center dimensions between latchbolt keepers. Keepers are wide enough to compensate for vertical-rod exit bolts which may be as much as 3/8" (10 mm) off center-to-center dimension, either way.

When using an electric strike in conjunction with a vertical-rod exit device, it is necessary that:

1. The bottom rod of the exit device be removed or made inoperative.
2. The latchbolt of the exit device be the "Pullman" or beveled type,
3. The latchbolt be free-latching and remain projected while the door is open. Mechanisms that hold the latchbolt retracted while the door is open, and automatically release it when the door is closed, must be removed or made inoperative.

HES Folger Adam 310-4-X



310-4-30 Complete Pacs for Surface Vertical Rods

MODELS & FINISHES	630	605	606	612	613	629
310-4-30-12D	\$1,259	\$1,302	\$1,270	\$1,270	\$1,259	\$1,302
310-4-30-24D	\$1,259	\$1,302	\$1,270	\$1,270	\$1,259	\$1,302
310-4-30-F-12D (Fail Safe)	\$1,259	\$1,302	\$1,270	\$1,270	\$1,259	\$1,302
310-4-30-F-24D (Fail Safe)	\$1,259	\$1,302	\$1,270	\$1,270	\$1,259	\$1,302
310-4-30-12D-LCBMA	\$1,513	\$1,555	\$1,523	\$1,523	\$1,513	\$1,555
310-4-30-24D-LCBMA	\$1,513	\$1,555	\$1,523	\$1,523	\$1,513	\$1,555
310-4-30-F-12D-LCBMA (Fail Safe)	\$1,513	\$1,555	\$1,523	\$1,523	\$1,513	\$1,555
310-4-30-F-24D-LCBMA (Fail Safe)	\$1,513	\$1,555	\$1,523	\$1,523	\$1,513	\$1,555

Vertical Rod spacing between 2-5/8" and 3-3/8"

310-4-30 Faceplates

OPTION	630	605	606	612	613	629
FP: 310-4-30	\$411	\$453	\$421	\$421	\$411	\$453

HOW TO ORDER Specify quantity and the following information. Order related products separately.

SERIES	KEEPER STYLE	FAIL SAFE/SECURE	VOLTAGE	FINISH	OPTION(S)	
310-4-X	(PK)	F	- 24D	- 612	- LCBMA	
COMPLETE PACS						
1 For use with vertical rod spacing between 4" and 4-3/4"	(PK) For use with 3/4" Pullman style latchbolts	(blank) Fail Secure (Standard)	12D 12 Volt	605 Bright Brass	LCBMA Latchbolt & locking cam monitor with auxiliary switch	
				606 Satin Brass		
2 For use with vertical rod spacing between 4-5/8" and 5-3/8"			F Fail Safe	24D 24 Volt		612 Satin Bronze
						613 Bronze Toned
3 For use with vertical rod spacing between 5-1/4" and 6"			629 Bright Stainless Steel			
30 For use with vertical rod spacing between 2-5/8" and 3-3/8"			630 Satin Stainless Steel			

HOW TO ORDER Specify quantity and the following information. Order related products separately.

PREFIX	SERIES	KEEPER STYLE	FINISH
FP	- 310-4-X	(PK)	- 630
FACEPLATE ONLY			
FP Faceplate	1 For use with vertical rod spacing between 4" and 4-3/4"	(PK) For use with 3/4" Pullman style latchbolts	605 Bright Brass
			606 Satin Brass
	2 For use with vertical rod spacing between 4-5/8" and 5-3/8"		612 Satin Bronze
			613 Bronze Toned
	3 For use with vertical rod spacing between 5-1/4" and 6"		629 Bright Stainless Steel
	30 For use with vertical rod spacing between 2-5/8" and 3-3/8"		630 Satin Stainless Steel

INSTALLATION NOTE: Double-door models are available with four different center-to-center dimensions between latchbolt keepers. Keepers are wide enough to compensate for vertical-rod exit bolts which may be as much as 3/8" (10 mm) off center-to-center dimension, either way.

When using an electric strike in conjunction with a vertical-rod exit device, it is necessary that:

1. The bottom rod of the exit device be removed or made inoperative.
2. The latchbolt of the exit device be the "Pullman" or beveled type,
3. The latchbolt be free-latching and remain projected while the door is open. Mechanisms that hold the latchbolt retracted while the door is open, and automatically release it when the door is closed, must be removed or made inoperative.

HES Folger Adam 310-6-X



310-6-1 Complete Pacs for Concealed Vertical Rods

MODELS & FINISHES	627	612
310-6-1-12D	\$1,243	\$1,316
310-6-1-24D	\$1,243	\$1,316
310-6-1-F-12D (Fail Safe)	\$1,243	\$1,316
310-6-1-F-24D (Fail Safe)	\$1,243	\$1,316
310-6-1-12D-LCBMA	\$1,498	\$1,570
310-6-1-24D-LCBMA	\$1,498	\$1,570
310-6-1-F-12D-LCBMA (Fail Safe)	\$1,498	\$1,570
310-6-1-F-24D-LCBMA (Fail Safe)	\$1,498	\$1,570

Vertical Rod spacing between 4" and 4-3/4"

310-6-1 Faceplates

OPTION	627	612
FP: 310-6-1	\$361	\$572

310-6-2 Complete Pacs for Concealed Vertical Rods

MODELS & FINISHES	627	612
310-6-2-12D	\$1,243	\$1,316
310-6-2-24D	\$1,243	\$1,316
310-6-2-F-12D (Fail Safe)	\$1,243	\$1,316
310-6-2-F-24D (Fail Safe)	\$1,243	\$1,316
310-6-2-12D-LCBMA	\$1,498	\$1,570
310-6-2-24D-LCBMA	\$1,498	\$1,570
310-6-2-F-12D-LCBMA (Fail Safe)	\$1,498	\$1,570
310-6-2-F-24D-LCBMA (Fail Safe)	\$1,498	\$1,570

Vertical Rod spacing between 4-5/8" and 5-3/8"

310-6-2 Faceplates

OPTION	627	612
FP: 310-6-2	\$361	\$572

INSTALLATION NOTE: Double-door models are available with four different center-to-center dimensions between latchbolt keepers. Keepers are wide enough to compensate for vertical-rod exit bolts which may be as much as 3/8" (10 mm) off center-to-center dimension, either way.

When using an electric strike in conjunction with a vertical-rod exit device, it is necessary that:

1. The bottom rod of the exit device be removed or made inoperative.
2. The latchbolt of the exit device be the "Pullman" or beveled type,
3. The latchbolt be free-latching and remain projected while the door is open. Mechanisms that hold the latchbolt retracted while the door is open, and automatically release it when the door is closed, must be removed or made inoperative.

HES Folger Adam 310-6-X



310-6-3 Complete Pacs for Concealed Vertical Rods

MODELS & FINISHES	627	612
310-6-3-12D	\$1,243	\$1,316
310-6-3-24D	\$1,243	\$1,316
310-6-3-F-12D (Fail Safe)	\$1,243	\$1,316
310-6-3-F-24D (Fail Safe)	\$1,243	\$1,316
310-6-3-12D-LCBMA	\$1,498	\$1,570
310-6-3-24D-LCBMA	\$1,498	\$1,570
310-6-3-F-12D-LCBMA (Fail Safe)	\$1,498	\$1,570
310-6-3-F-24D-LCBMA (Fail Safe)	\$1,498	\$1,570

Vertical Rod spacing between 5-1/4" and 6"

310-6-3 Faceplates

OPTION	627	612
FP: 310-6-3	\$361	\$572

310-6-8 Complete Pacs for Concealed Vertical Rods

MODELS & FINISHES	627	612
310-6-8-12D	\$740	\$951
310-6-8-24D	\$740	\$951
310-6-8-F-12D (Fail Safe)	\$740	\$951
310-6-8-F-24D (Fail Safe)	\$740	\$951
310-6-8-12D-LCBMA	\$993	\$1,204
310-6-8-24D-LCBMA	\$993	\$1,204
310-6-8-F-12D-LCBMA (Fail Safe)	\$993	\$1,204
310-6-8-F-24D-LCBMA (Fail Safe)	\$993	\$1,204

Only used on active leaf

310-6-8 Faceplates

OPTION	627	612
FP: 310-6-8	\$361	\$572

INSTALLATION NOTE: Double-door models are available with four different center-to-center dimensions between latchbolt keepers. Keepers are wide enough to compensate for vertical-rod exit bolts which may be as much as 3/8" (10 mm) off center-to-center dimension, either way.

When using an electric strike in conjunction with a vertical-rod exit device, it is necessary that:

1. The bottom rod of the exit device be removed or made inoperative.
2. The latchbolt of the exit device be the "Pullman" or beveled type,
3. The latchbolt be free-latching and remain projected while the door is open. Mechanisms that hold the latchbolt retracted while the door is open, and automatically release it when the door is closed, must be removed or made inoperative.

HES Folger Adam 310-6-X



310-6-30 Complete Pacs for Concealed Vertical Rods

MODELS & FINISHES	627	612
310-6-30-12D	\$1,243	\$1,316
310-6-30-24D	\$1,243	\$1,316
310-6-30-F-12D (Fail Safe)	\$1,243	\$1,316
310-6-30-F-24D (Fail Safe)	\$1,243	\$1,316
310-6-30-12D-LCBMA	\$1,498	\$1,570
310-6-30-24D-LCBMA	\$1,498	\$1,570
310-6-30-F-12D-LCBMA (Fail Safe)	\$1,498	\$1,570
310-6-30-F-24D-LCBMA (Fail Safe)	\$1,498	\$1,570

Vertical Rod spacing between 2-5/8" and 3-3/8"

310-6-30 Faceplates

OPTION	627	612
FP: 310-6-30	\$361	\$572

HOW TO ORDER *Specify quantity and the following information. Order related products separately.*

SERIES	KEEPER STYLE	FAIL SAFE/SECURE	VOLTAGE	FINISH	OPTION(S)
310-6-X	(PK)	- F	- 24D	- 627	- LCBMA
COMPLETE PACS					
1 For use with vertical rod spacing between 4" and 4-3/4"	(PK) For use with 3/4" Pullman style latchbolts	(blank) Fail Secure (Standard)	12D 12 Volt	612 Satin Bronze	LCBMA Latchbolt & locking cam monitor with auxiliary switch
2 For use with vertical rod spacing between 4-5/8" and 5-3/8"		F Fail Safe	24D 24 Volt	627 Satin Aluminum	
3 For use with vertical rod spacing between 5-1/4" and 6"					
8 For only the active leaf of a pair of doors					
30 For use with vertical rod spacing between 2-5/8" and 3-3/8"					

HOW TO ORDER *Specify quantity and the following information. Order related products separately.*

PREFIX	SERIES	KEEPER STYLE	FINISH
FP	- 310-6-X	(PK)	- 612
FACEPLATE ONLY			
FP Faceplate	1 For use with vertical rod spacing between 4" and 4-3/4"	(PK) For use with 3/4" Pullman style latchbolts	605 Bright Brass
	2 For use with vertical rod spacing between 4-5/8" and 5-3/8"		606 Satin Brass
	3 For use with vertical rod spacing between 5-1/4" and 6"		612 Satin Bronze
	8 For only the active leaf of a pair of doors		613 Bronze Toned
	30 For use with vertical rod spacing between 2-5/8" and 3-3/8"		629 Bright Stainless Steel
			630 Satin Stainless Steel

HES Folger Adam 310-1-X

SB: 310-1-1 Electric Strike Bodies

MODELS & FINISHES	(PK)
310-1-1-12D	\$856
310-1-1-24D	\$856
310-1-1-F-12D (Fail Safe)	\$856
310-1-1-F-24D (Fail Safe)	\$856
310-1-1-12D-LCBMA	\$1,103
310-1-1-24D-LCBMA	\$1,103
310-1-1-F-12D-LCBMA (Fail Safe)	\$1,103
310-1-1-F-24D-LCBMA (Fail Safe)	\$1,103

SB: 310-1-2 Electric Strike Bodies

MODEL & KEEPER	(PK)
310-1-2-12D	\$856
310-1-2-24D	\$856
310-1-2-F-12D (Fail Safe)	\$856
310-1-2-F-24D (Fail Safe)	\$856
310-1-2-12D-LCBMA	\$1,103
310-1-2-24D-LCBMA	\$1,103
310-1-2-F-12D-LCBMA (Fail Safe)	\$1,103
310-1-2-F-24D-LCBMA (Fail Safe)	\$1,103

SB: 310-1-3 Electric Strike Bodies

MODEL & KEEPER	(PK)
310-1-3-12D	\$856
310-1-3-24D	\$856
310-1-3-F-12D (Fail Safe)	\$856
310-1-3-F-24D (Fail Safe)	\$856
310-1-3-12D-LCBMA	\$1,103
310-1-3-24D-LCBMA	\$1,103
310-1-3-F-12D-LCBMA (Fail Safe)	\$1,103
310-1-3-F-24D-LCBMA (Fail Safe)	\$1,103

**HES Folger Adam
310-1-X**

SB: 310-1-30 Electric Strike Bodies

MODEL & KEEPER	PRICE
310-1-30-12D	\$856
310-1-30-24D	\$856
310-1-30-F-12D (Fail Safe)	\$856
310-1-30-F-24D (Fail Safe)	\$856
310-1-30-12D-LCBMA	\$1,103
310-1-30-24D-LCBMA	\$1,103
310-1-30-F-12D-LCBMA (Fail Safe)	\$1,103
310-1-30-F-24D-LCBMA (Fail Safe)	\$1,103

HOW TO ORDER <i>Specify quantity and the following information. Order related products separately.</i>						
PREFIX	SERIES	X - MODEL	KEEPER STYLE	FAIL SAFE/SECURE	VOLTAGE	OPTION(S)
SB	- 310-1	- 1	(PK)	- F	- 24D	- LCBMA
STRIKE BODY ONLY						
SB Strike Body	Strike Body Only 310-1-X	1 For use with vertical rod spacing between 4" and 4-3/4"	(PK) For use with Pullman style latchbolts	(blank) Fail Secure (Standard)	12D 12 Volt	LCBMA Latchbolt & locking cam monitor with auxiliary switch
		2 For use with vertical rod spacing between 4-5/8" and 5-3/8"		F Fail Safe	24D 24 Volt	
		3 For use with vertical rod spacing between 5-1/4" and 6"				
		30 For use with vertical rod spacing between 2-5/8" and 3-3/8"				

HES Folger Adam 712, 712-75



712 Complete Pacs for Latchbolt Locks

MODELS & FINISHES	630	605	606	612	613	629
712-12D	\$596	\$696	\$668	\$668	\$633	\$668
712-24D	\$596	\$696	\$668	\$668	\$633	\$668
712-F-12D (Fail Safe)	\$596	\$696	\$668	\$668	\$633	\$668
712-F-24D (Fail Safe)	\$596	\$696	\$668	\$668	\$633	\$668
712-12D-LBMLCM	\$723	\$822	\$794	\$794	\$759	\$794
712-24D-LBMLCM	\$723	\$822	\$794	\$794	\$759	\$794
712-F-12D-LBMLCM (Fail Safe)	\$723	\$822	\$794	\$794	\$759	\$794
712-F-24D-LBMLCM (Fail Safe)	\$723	\$822	\$794	\$794	\$759	\$794

Hollow metal frame applications with up to 5/8" throw latchbolts

712 Faceplates

OPTION	630	605	606	612	613	629
FP: 712/732	\$129	\$227	\$200	\$200	\$165	\$200

712-75 Complete Pacs for Latchbolt Locks

MODELS & FINISHES	630	605	606	612	613	629
712-75-12D	\$611	\$712	\$681	\$681	\$648	\$681
712-75-24D	\$611	\$712	\$681	\$681	\$648	\$681
712-75-F-12D (Fail Safe)	\$611	\$712	\$681	\$681	\$648	\$681
712-75-F-24D (Fail Safe)	\$611	\$712	\$681	\$681	\$648	\$681
712-75-12D-LBMLCM	\$739	\$840	\$809	\$809	\$776	\$809
712-75-24D-LBMLCM	\$739	\$840	\$809	\$809	\$776	\$809
712-75-F-12D-LBMLCM (Fail Safe)	\$739	\$840	\$809	\$809	\$776	\$809
712-75-F-24D-LBMLCM (Fail Safe)	\$739	\$840	\$809	\$809	\$776	\$809

Hollow metal frame applications with up to 3/4" throw latchbolts

712-75 Faceplates

OPTION	630	605	606	612	613	629
FP: 712-75/732-75	\$153	\$252	\$221	\$221	\$191	\$221

700 & 742 Series | LBMLCM: When using LBMLCM with a SARGENT 78/8200 Series or BEST 40 Series Mortise lock a 1/2" or 5/8" keeper latchbolt detection will be dependent on the door gap in order to ensure functionality. Consult customer support regarding use with other manufacturers.

712-75, 732-75 and 742-75: The LBMLCM option is compatible with SARGENT 78/8200 Series or BEST 40 Series 3/4" throw mortise lock latchbolts in hollow metal and wood frame applications. Monitoring capabilities are dependent on a maximum 1/8" door gap in order to ensure functionality. Consult customer support regarding use with other manufacturers

HES Folger Adam 732, 732-75



732 Complete Pacs for Latchbolt Locks

MODELS & FINISHES	630	605	606	612	613	629
732-12D	\$596	\$696	\$668	\$668	\$633	\$668
732-24D	\$596	\$696	\$668	\$668	\$633	\$668
732-F-12D (Fail Safe)	\$596	\$696	\$668	\$668	\$633	\$668
732-F-24D (Fail Safe)	\$596	\$696	\$668	\$668	\$633	\$668
732-12D-LBMLCM	\$723	\$822	\$794	\$794	\$759	\$794
732-24D-LBMLCM	\$723	\$822	\$794	\$794	\$759	\$794
732-F-12D-LBMLCM (Fail Safe)	\$723	\$822	\$794	\$794	\$759	\$794
732-F-24D-LBMLCM (Fail Safe)	\$723	\$822	\$794	\$794	\$759	\$794

Wood frame applications with up to 5/8" throw latchbolts

732 Faceplates

OPTION	630	605	606	612	613	629
FP: 712/732	\$129	\$227	\$200	\$200	\$165	\$200

732-75 Complete Pacs for Latchbolt Locks

MODELS & FINISHES	630	605	606	612	613	629
732-75-12D	\$611	\$712	\$681	\$681	\$648	\$681
732-75-24D	\$611	\$712	\$681	\$681	\$648	\$681
732-75-F-12D (Fail Safe)	\$611	\$712	\$681	\$681	\$648	\$681
732-75-F-24D (Fail Safe)	\$611	\$712	\$681	\$681	\$648	\$681
732-75-12D-LBMLCM	\$739	\$840	\$809	\$809	\$776	\$809
732-75-24D-LBMLCM	\$739	\$840	\$809	\$809	\$776	\$809
732-75-F-12D-LBMLCM (Fail Safe)	\$739	\$840	\$809	\$809	\$776	\$809
732-75-F-24D-LBMLCM (Fail Safe)	\$739	\$840	\$809	\$809	\$776	\$809

Wood frame applications with up to 3/4" throw latchbolts

732-75 Faceplates

OPTION	630	605	606	612	613	629
FP: 712-75/732-75	\$153	\$252	\$221	\$221	\$191	\$221

700 & 742 Series | LBMLCM: When using LBMLCM with a SARGENT 78/8200 Series or BEST 40 Series Mortise lock a 1/2" or 5/8" keeper latchbolt detection will be dependent on the door gap in order to ensure functionality. Consult customer support regarding use with other manufacturers.

712-75, 732-75 and 742-75: The LBMLCM option is compatible with SARGENT 78/8200 Series or BEST 40 Series 3/4" throw mortise lock latchbolts in hollow metal and wood frame applications. Monitoring capabilities are dependent on a maximum 1/8" door gap in order to ensure functionality. Consult customer support regarding use with other manufacturers

HES Folger Adam 712, 712-75, 732, 732-75

HOW TO ORDER <i>Specify quantity and the following information. Order related products separately.</i>					
SERIES	FAIL SAFE/SECURE	VOLTAGE	FINISH	OPTION(S)	
712	- F	- 24D	- 630	- LBMLCM	
COMPLETE PACS					
712	1/2" PK keeper standard; Hollow metal frames, for up to a 5/8" throw latchbolt	(blank) Fail Secure (Standard)	12D 12 Volt	605 Bright Brass 606 Satin Brass	LBMLCM Latchbolt & locking cam monitor
712-75	3/4" PK keeper standard; Hollow metal frames, for up to a 3/4" throw latchbolt without deadbolt	F Fail Safe	24D 24 Volt	612 Satin Bronze 613 Bronze Toned	
732	PK keeper standard; Wood frames, for up to a 5/8" throw latchbolt			629 Bright Stainless Steel	
732-75	3/4" PK keeper standard; Wood frames, for up to a 3/4" throw latchbolt without deadbolt			630 Satin Stainless Steel	

HOW TO ORDER <i>Specify quantity and the following information. Order related products separately.</i>		
PREFIX	SERIES	FINISH
FP	- 732-75	- 613
FACEPLATE ONLY		
FP Faceplate	712 1/2" PK keeper standard; Hollow metal frames, for up to a 5/8" throw latchbolt	605 Bright Brass
	712-75 3/4" PK keeper standard; Hollow metal frames, for up to a 3/4" throw latchbolt without deadbolt	606 Satin Brass
	732 PK keeper standard; Wood frames, for up to a 5/8" throw latchbolt	612 Satin Bronze
	732-75 3/4" PK keeper standard; Wood frames, for up to a 3/4" throw latchbolt without deadbolt	613 Bronze Toned
		629 Bright Stainless Steel
		630 Satin Stainless Steel

700 & 742 Series | LBMLCM: When using LBMLCM with a SARGENT 78/8200 Series or BEST 40 Series Mortise lock a 1/2" or 5/8" keeper latchbolt detection will be dependent on the door gap in order to ensure functionality. Consult customer support regarding use with other manufacturers.

712-75, 732-75 and 742-75: The LBMLCM option is compatible with SARGENT 78/8200 Series or BEST 40 Series 3/4" throw mortise lock latchbolts in hollow metal and wood frame applications. Monitoring capabilities are dependent on a maximum 1/8" door gap in order to ensure functionality. Consult customer support regarding use with other manufacturers

HES Folger Adam SB710, SB710-75

SB: 710 Electric Strike Bodies

MODEL & KEEPER	(1/2)
710-12D	\$469
710-24D	\$469
710-F-12D (Fail Safe)	\$469
710-F-24D (Fail Safe)	\$469
710-12D-LBMLCM	\$596
710-24D-LBMLCM	\$596
710-F-12D-LBMLCM (Fail Safe)	\$596
710-F-24D-LBMLCM (Fail Safe)	\$596

SB: 710-75 Electric Strike Bodies

MODEL & KEEPER	(3/4)
710-75-12D	\$469
710-75-24D	\$469
710-75-F-12D (Fail Safe)	\$469
710-75-F-24D (Fail Safe)	\$469
710-75-12D-LBMLCM	\$596
710-75-24D-LBMLCM	\$596
710-75-F-12D-LBMLCM (Fail Safe)	\$596
710-75-F-24D-LBMLCM (Fail Safe)	\$596

HES Folger Adam SB710, SB710-75, SB730, SB730-75



SB: 730 Electric Strike Bodies

MODEL & KEEPER	(1/2)
730-12D	\$469
730-24D	\$469
730-F-12D (Fail Safe)	\$469
730-F-24D (Fail Safe)	\$469
730-12D-LBMLCM	\$596
730-24D-LBMLCM	\$596
730-F-12D-LBMLCM (Fail Safe)	\$596
730-F-24D-LBMLCM (Fail Safe)	\$596

SB: 730-75 Electric Strike Bodies

MODEL & KEEPER	(3/4)
730-75-12D	\$469
730-75-24D	\$469
730-75-F-12D (Fail Safe)	\$469
730-75-F-24D (Fail Safe)	\$469
730-75-12D-LBMLCM	\$596
730-75-24D-LBMLCM	\$596
730-75-F-12D-LBMLCM (Fail Safe)	\$596
730-75-F-24D-LBMLCM (Fail Safe)	\$596

HOW TO ORDER *Specify quantity and the following information. Order related products separately.*

PREFIX	STRIKE SERIES	KEEPER STYLE	FAIL SAFE/ SECURE	VOLTAGE	OPTION(S)
SB	- 710	(3/4)	- F	- 24D	- LCBMA
STRIKE BODY ONLY					
SB Strike Body	710 Hollow metal frames, for up to a 5/8" throw latchbolt	1/2 1/2" Keeper	(blank) Fail Secure (Standard)	12D 12 Volt	LBMLCM Latchbolt & locking cam monitor
	710-75 Hollow metal frames, for up to a 3/4" throw latchbolt without deadbolt	3/4 3/4" Keeper	F Fail Safe	24D 24 Volt	
	730 Wood frames, for up to a 5/8" throw latchbolt				
	730-75 Wood frames, for up to a 3/4" throw latchbolt without deadbolt				

INSTALLATION NOTE: Double-door models are available with four different center-to-center dimensions between latchbolt keepers. Keepers are wide enough to compensate for vertical-rod exit bolts which may be as much as 3/8" (10 mm) off center-to-center dimension, either way.

When using an electric strike in conjunction with a vertical-rod exit device, it is necessary that:

1. The bottom rod of the exit device be removed or made inoperative.
2. The latchbolt of the exit device be the "Pullman" or beveled type,
3. The latchbolt be free-latching and remain projected while the door is open. Mechanisms that hold the latchbolt retracted while the door is open, and automatically release it when the door is closed, must be removed or made inoperative.

HES Folger Adam 742-75



742-75 Complete Pacs for Latchbolt Locks

MODELS & FINISHES	630	605	606	612	613	629
742-75-12D	\$646	\$745	\$716	\$716	\$681	\$716
742-75-24D	\$646	\$745	\$716	\$716	\$681	\$716
742-75-F-12D (Fail Safe)	\$646	\$745	\$716	\$716	\$681	\$716
742-75-F-24D (Fail Safe)	\$646	\$745	\$716	\$716	\$681	\$716
742-75-12D-LBMLCM	\$773	\$872	\$844	\$844	\$808	\$844
742-75-24D-LBMLCM	\$773	\$872	\$844	\$844	\$808	\$844
742-75-F-12D-LBMLCM (Fail Safe)	\$773	\$872	\$844	\$844	\$808	\$844
742-75-F-24D-LBMLCM (Fail Safe)	\$773	\$872	\$844	\$844	\$808	\$844

Hollow metal frame applications with up to 3/4" throw latchbolts

742-75 Faceplates

OPTION	630	605	606	612	613	629
FP: 742-75	\$142	\$242	\$212	\$212	\$177	\$212

HOW TO ORDER <i>Specify quantity and the following information. Order related products separately.</i>					
SERIES	FAIL SAFE/SECURE	VOLTAGE	FINISH	OPTION(S)	
742-75	- F	- 12D	- 613	- LBMLCM	
COMPLETE PACS					
742-75	Hollow metal frames, for up to a 3/4" throw latchbolt without deadbolt	(blank) Fail Secure (Standard)	12D 12 Volt	605 Bright Brass	LBMLCM Latchbolt & locking cam monitor
		F Fail Safe	24D 24 Volt	606 Satin Brass	
				612 Satin Bronze	
				613 Bronze Toned	
				629 Bright Stainless Steel	
				630 Satin Stainless Steel	

HOW TO ORDER <i>Specify quantity and the following information. Order related products separately.</i>					
PREFIX	SERIES			FINISH	
FP	- 742-75			- 630	
FACEPLATE ONLY					
FP Faceplate	742-75	Hollow metal frames, for up to a 3/4" throw latchbolt without deadbolt			605 Bright Brass
				606 Satin Brass	
				612 Satin Bronze	
				613 Bronze Toned	
				629 Bright Stainless Steel	
				630 Satin Stainless Steel	

700 & 742 Series | LBMLCM: When using LBMLCM with a SARGENT 78/8200 Series or BEST 40 Series Mortise lock a 1/2" or 5/8" keeper latchbolt detection will be dependent on the door gap in order to ensure functionality. Consult customer support regarding use with other manufacturers.

712-75, 732-75 and 742-75: The LBMLCM option is compatible with SARGENT 78/8200 Series or BEST 40 Series 3/4" throw mortise lock latchbolts in hollow metal and wood frame applications. Monitoring capabilities are dependent on a maximum 1/8" door gap in order to ensure functionality. Consult customer support regarding use with other manufacturers

**HES Folger Adam
SB740 -75**



SB: 740-75 Electric Strike Bodies

MODEL & KEEPER	(3/4)
740-75-12D	\$504
740-75-24D	\$504
740-75-F-12D (Fail Safe)	\$504
740-75-F-24D (Fail Safe)	\$504
740-75-12D-LBMLCM	\$630
740-75-24D-LBMLCM	\$630
740-75-F-12D-LBMLCM (Fail Safe)	\$630
740-75-F-24D-LBMLCM (Fail Safe)	\$630

HOW TO ORDER <i>Specify quantity and the following information. Order related products separately.</i>						
PREFIX	SERIES	KEEPER STYLE	FAIL SAFE/SECURE	VOLTAGE	OPTION(S)	
SB	740-75	(3/4)	—	— 24D	—	
STRIKE BODY ONLY						
SB	Strike Body	740-75	1/2 1/2" Keeper	(blank) Fail Secure (Standard)	12D 12 Volt	LBMLCM Latchbolt & locking cam monitor
			3/4 3/4" Keeper	F Fail Safe	24D 24 Volt	

700 & 742 Series | LBMLCM: When using LBMLCM with a SARGENT 78/8200 Series or BEST 40 Series Mortise lock a 1/2" or 5/8" keeper latchbolt detection will be dependent on the door gap in order to ensure functionality. Consult customer support regarding use with other manufacturers.

712-75, 732-75 and 742-75: The LBMLCM option is compatible with SARGENT 78/8200 Series or BEST 40 Series 3/4" throw mortise lock latchbolts in hollow metal and wood frame applications. Monitoring capabilities are dependent on a maximum 1/8" door gap in order to ensure functionality. Consult customer support regarding use with other manufacturers

Electric Strike Accessories

ACCESSORY	DESCRIPTION	PRICE
2001M Plug-in bridge rectifier	Converts AC to unfiltered DC. Rated 35 V, 1 Amp Includes MOV and self-resettable fuse Not recommended for 1006 Electric Strike	\$63
2001-1 Wire-in bridge rectifier	Converts AC to unfiltered DC. Rated 35 V, 2 Amp Not recommended for 1006 Electric Strike	\$37
2004M ElectroLynx® adapter	Adapter between existing HES electric strikes and ElectroLynx® connectors	\$39
2005M3 SMART Pac® III <i>Addition of Smart Pac to any electric strike extends the 5-year "No Fault" warranty to a 10-year "No Fault" warranty.</i>	In-line power controller able to receive input voltages from 12–32V AC or DC. Built-in bridge rectifier. Reduces initial voltage by 25% to extend the life of the electric strike. Includes built-in resettable fuse, MOV, voltage regulation and input voltage level indicating and unit status NOTE: For use with 1006, input voltage must be DC	\$99
2006M Plug-in buzzer	Audible operation indicator. At 24VDC, 75db @ 11-3/4"	\$48
2007M Plug-in pigtail connectors	With 4" wire leads	\$19
150 Strike latch guard	Stainless steel. Installed at the edge of the door to cover the lock and electric strike Available in 626 finish only	\$84
310-2-3 Astragal strike latch guard	Designed to prevent tampering with the latchbolt, as well as the latchbolt keeper. Prevents one door from being open before the other	\$193
7000-SMB Surface mounting box	Installs on inactive door of pair of doors to accommodate rim-exit devices. To be used with the 7000 (783S and 789S), 9400, 9500, 9600 and 9700 series. Available in black finish only	\$203
152 Universal mounting tab	Mount inside hollow metal and aluminum jambs	\$24
HESCUT-MTK Metal Template Kit	For installing the 1006, 1500, 1600, 4500, 5000, 5200, 7000 and 7501 electric strikes (4-7/8" ANSI jamb preparation only)	\$73
9000-MTK Metal Template Kit	For installing the 9400, 9500, 9600 and 9700 electric strikes	\$62
157D Torx® security bit	Tamper-Resistant Torx R20 insert bit	\$40
157 Torx® screws	Two (2) 12-24 UNC x 3/4" FH Tamper-Resistant Pin-in-Torx screws	\$13

Securitron UNL, MUNL



UNL, MUNL Complete Packs for Latchbolt Locks

MODELS & FINISHES	US26D/626	US10B/613
UNL-12	\$444	\$497
UNL-24	\$444	\$497
MUNL-12	\$624	\$607
MUNL-24	\$624	\$670

UNL, MUNL Accessories

MODEL	PRICE
FSUNL-12 Fail Safe/Fail Secure UnLatch Module, 12 VDC	\$111
FSUNL-24 Fail Safe/Fail Secure UnLatch Module, 24 VDC	\$111

HOW TO ORDER *Specify quantity and the following information. Order related products separately.*

SERIES	FAIL SAFE/SECURE	VOLTAGE	FINISH
MUNL	—	-24	-10B
UNL Cylindrical	(blank) Fail Secure (Standard)	12 12 Volt	(blank) US26D/626—Stainless Steel
MUNL Mortise		24 24 Volt	10B US10B/613—Oil Rubbed Bronze
Note: FSUNL for field-selectable fail safe operation ordered separately			

**Securitron
M370, M380**



M370, M380 600 lbs Intelligent Magnalocks

MODEL	DESCRIPTION	US28/ 628	US03/ 605	US04/ 606	US10/ 612	US20A/ 313	US19/ 335
M370	M370 Magnalock	\$430	—	—	—	\$475	\$475
M380BD	M380 Magnalock w/BondSTAT, DPS	\$549	\$646	\$635	\$635	\$583	\$583
M380BDX	M380 Magnalock w/BondSTAT, DPS, REX	\$673	\$781	\$770	\$770	\$717	\$717
M380BDCX	M380 Magnalock w/BondSTAT, DPS, REX and BW Camera	\$1,105	\$1,212	\$1,201	\$1,201	\$1,147	\$1,147
M380BDC2X	M380 Magnalock w/BondSTAT, DPS, REX and Color Camera	\$1,105	\$1,212	\$1,201	\$1,201	\$1,147	\$1,147
M380BDC2	M380 Magnalock w/BondSTAT, DPS, and Color Camera	\$1,094	\$1,200	\$1,189	\$1,189	\$1,136	\$1,136
M380BDC	M380 Magnalock w/BondSTAT, DPS, and BW Camera	\$1,094	\$1,200	\$1,189	\$1,189	\$1,136	\$1,136

HOW TO ORDER *Specify quantity and the following information. Order related products separately.*

MODEL SERIES	MONITORING OPTIONS	ACCESSORY OPTIONS	FINISH OPTIONS
M380	BD	X	— 630
M370 (600 lbs)	(blank) No Monitoring	(blank) No Accessory Options	628/US28 Satin Aluminum Clear (standard)
M380 (600 lbs)	BD BondStat Monitor & Door Position Switch	C Black and White Analog Camera	605/US3 Bright Brass
		C2 Color Analog Camera	606/US4 Satin Brass
		X PIR Request to Exit	612/US10 Satin Bronze
			313/US20 Satin Brown

Securitron M680E



M680E EcoMag® 1,200 lbs Intelligent Magalocks

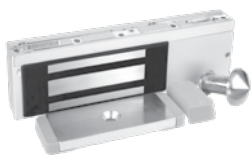
MODEL	DESCRIPTION	628	629, 630, 605, 606, 612	613E, BSP
M680E	M680 Eco Magnalock	\$625	—	—
M680EBD	M680 Eco Magnalock w/BondSTAT, DPS	\$700	\$800	\$750
M680EBDX	M680 Eco Magnalock w/BondSTAT, DPS, REX	\$942	\$1,042	\$992

HOW TO ORDER *Specify quantity and the following information. Order related products separately.*

MODEL SERIES	MONITORING OPTIONS	ACCESSORY OPTIONS	FINISH OPTIONS*
M680E	BD	X	606
M680E (1,200 lbs)	(blank) No Monitoring	(blank) No Accessory Options	628/US28 Satin Aluminum Clear
	BD BondStat Monitor & Door Position Switch	X PIR Request to Exit	605/US3 Bright Brass
			606/US4 Satin Brass
			612/US10 Satin Bronze
			613E Dark Oxidized Satin Bronze
			629 Bright Stainless Steel
			630 Satin Stainless Steel
			BSP Black Suede Powder Coat
			WSP White Suede Powder Coat

*M380E Finish Options available soon. Please contact your Sales Representative for product details, availability and pricing

Securiton iMXDa



iMXDa Delayed Egress

MODEL	DESCRIPTION	PRICE
iMXDa	Integrated Motion Exit Delay System — Dual Voltage	\$1,245
iMXDa-CA15S	Integrated Motion Exit Delay System — Dual Voltage, California, 15 sec	\$1,245
iMXDa-CA30S	Integrated Motion Exit Delay System — Dual Voltage, California, 30 sec	\$1,245
iMXDaCH	Integrated Motion Exit Delay System — Dual Voltage, Chicago	\$1,245
iMXDaH	IMXDA for HUGS Infant Protection System	\$1,245
iEXDa	Integrated Delay Egress External Initiate — Dual Voltage	\$1,094

Delayed Egress Accessories

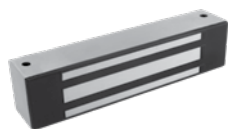
MODEL	DESCRIPTION	PRICE
BA-XDT-12	Exit Delay Timer — 12 VDC Boxed Alarm & Door Label	\$252
BA-XDT-24	Exit Delay Timer — 24 VDC Boxed Alarm & Door Label	\$252
EXD-1L	Exit Delay System [EXD-1] — Label & Documentation	\$22
FA-XDT-12	Exit Delay Timer — 12 VDC, Flush Mount w/Alarm & Door	\$252
FA-XDT-24	Exit Delay Timer — 24 VDC, Flush Mount w/Alarm & Door	\$252
XDT-12	Exit Delay Timer — 12 VDC	\$166
XDT-24	Exit Delay Timer — 24 VDC	\$166
SB-MXD	Sex Bolt Kit — Door Movement	\$184

Additional Universal Magnetic Lock Mounting Brackets on Page 42

HOW TO ORDER *Specify quantity and the following information. Order related products separately.*

MODEL SERIES	TIMING OPTIONS
iMXDa	CH
iMXDa Integrated Initiation	(blank) Adjustable Timing
iEXDa External Initiation	-CA15S California Required 15s Timings
	-CA30S California Required 30s Timings
	CH Chicago Required Timings
	H HUGS Infant Protection Timings

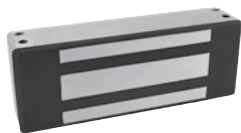
Securiton M32



M32 600lbs Durable Magnalocks

MODEL	DESCRIPTION	PRICE
M32	M32 Magnalock — 12/24 VDC	\$372
M32B	M32 Magnalock — 12/24 VDC, MBS	\$475
M32D	M32 Magnalock — 12/24 VDC, DPS	\$440
M32BD	M32 Magnalock — 12/24 VDC, MBS, DPS	\$534
M32F	M32 Magnalock — 12/24 VDC, Face Drilled	\$372
M32FB	M32 Magnalock — 12/24 VDC, Face Drilled, MBS	\$475
M32FD	M32 Magnalock — 12/24 VDC, Face Drilled, DPS	\$440
M32FBD	M32 Magnalock — 12/24 VDC, Face Drilled, MBS, DPS	\$534
-SS	Split Strike Options	Add \$113

Securitron M62



M62 1,200 lbs Durable Magnalocks

MODEL	DESCRIPTION	PRICE
M62	M62 Magnalock — 12/24 VDC	\$475
M62B	M62 Magnalock — 12/24 VDC, MBS	\$579
M62D	M62 Magnalock — 12/24 VDC, DPS	\$544
M62BD	M62 Magnalock — 12/24 VDC, MBS, DPS	\$637
M62F	M62 Magnalock — 12/24 VDC, Face Drilled	\$475
M62FB	M62 Magnalock — 12/24 VDC, Face Drilled, MBS	\$579
M62FD	M62 Magnalock — 12/24 VDC, Face Drilled, DPS	\$544
M62FBD	M62 Magnalock — 12/24 VDC Face Drilled, MBS, DPS	\$637
M62G	M62 Magnalock — 12/24 VDC, Gate Conduit	\$501
M62GB	M62 Magnalock — 12/24 VDC, Gate Conduit, MBS	\$604
M62GD	M62 Magnalock — 12/24 VDC, Gate Conduit, DPS	\$572
M62GBD	M62 Magnalock — 12/24 VDC, Gate Conduit, MBS, DPS	\$664
M62FG	M62 Magnalock — 12/24 VDC, Face Drilled, Gate Conduit	\$501
M62FGB	M62 Magnalock — 12/24 VDC, Face Drilled, Gate Conduit, MBS	\$604
M62FGD	M62 Magnalock — 12/24 VDC, Face Drilled, DPS, Gate Conduit	\$572
M62FGBD	M62 Magnalock — 12/24 VDC, Face Drilled, Gate Conduit, MBS, DPS	\$664
-OS	Offset Strike Option	Add \$0
-SS	Split Strike Options	Add \$90

Securitron M82



M82 1,800 lbs Durable Magnalocks

MODEL	DESCRIPTION	PRICE
M82B	M82 Magnalock — 12/24 VDC, MBS	\$667
M82BD	M82 Magnalock — 12/24 VDC, MBS, DPS	\$726
M82FB	M82 Magnalock — 12/24 VDC, Face Drilled, MBS	\$667
M82FBD	M82 Magnalock — 12/24 VDC, Face Drilled, MBS, DPS	\$726
M82GB	M82 Magnalock — 12/24 VDC, Gate Conduit, MBS	\$694
M82GBD	M82 Magnalock — 12/24 VDC, Gate Conduit, MBS, DPS	\$752
M82FGB	M82 Magnalock — 12/24 VDC, Face Drilled, Gate Conduit, MBS	\$694
M82FGBD	M82 Magnalock — 12/24 VDC, Face Drilled, Gate Conduit, MBS, DPS	\$752
-OS	Offset Strike Option	Add \$0
-SS	Split Strike Options	Add \$113

Securitron M32, M62, M82

M32, M62, M82 Durable Magnalocks Brackets

MODEL	DESCRIPTION	PRICE
ASB-32BK	Alum Frame Spacer Bracket — M32, Black Anodized	\$60
ASB-32CL	Alum Frame Spacer Bracket — M32, Clear Anodized	\$45
ASB-62BK	Alum Frame Spacer Bracket — M62, Black Anodized	\$60
ASB-62CL	Alum Frame Spacer Bracket — M62, Clear Anodized	\$45
ASB-82BK	Alum Frame Spacer Bracket — M82, Black Anodized	\$84
ASB-82CL	Alum Frame Spacer Bracket — M82, Clear Anodized	\$73
CWB-32BK	Concrete/Wood Bracket — M32, Black Anodized	\$67
CWB-32CL	Concrete/Wood Bracket — M32, Clear Anodized	\$57
CWB-62BK	Concrete/Wood Bracket — M62, Black Anodized	\$60
CWB-62CL	Concrete/Wood Bracket — M62, Clear Anodized	\$64
CWB-82BK	Concrete/Wood Bracket — M82, Black Anodized	\$91
CWB-82CL	Concrete/Wood Bracket — M82, Clear Anodized	\$79
ZA-32/62BK	Adjustable Z-Bracket — M32/62, Black Anodized	\$171
ZA-32/62CL	Adjustable Z-Bracket — M32/62, Clear Anodized	\$160
ZA-32/62SS	Adjustable Z-Bracket — M32/62, Satin Stainless	\$180
ZA-82BK	Adjustable Z-Bracket — M82, Black Anodized	\$206
ZA-82CL	Adjustable Z-Bracket — M82, Clear Anodized	\$193
ZA-82SS	Adjustable Z-Bracket — M82, Satin Stainless	\$216

Additional Universal Magnetic Lock Mounting Brackets on Page 42

HOW TO ORDER <i>Specify quantity and the following information. Order related products separately.</i>			
MODEL SERIES	MOUNTING METHOD	MONITORING OPTIONS	STRIKE PLATE OPTIONS
M62	FG	BD	– OS
M32 (600 lbs)	(blank) Direct Mount	(blank) No Monitoring	(blank) Standard Strike
M62 (1,200 lbs)	F Face Drilled	B BondStat Monitor	OS Offset Strike
M82 (1,800 lbs)	G Gate Conduit (M62/M82 only)	D Door Position Switch	SS Split Strike
		BD BondStat and DPS	SASM Shock Absorbing Strike Mount

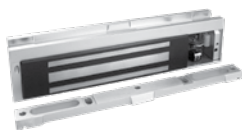
HOW TO ORDER <i>Specify quantity and the following information. Order related products separately.</i>		
HOUSING TYPE	MAGNET TYPE	SPECIFY LENGTH (NOT USED IN PART NUMBER)
HHD	– 32	(83")
HHD	32	HHD Max Length 96"
HHSL	62	HHSL Max Length 48"
HHSR	82	HHSR Max Length 48"
HVD		HVD Max Length 96"

Securitron M32, M62, M82

M32, M62, M82 Accessories

MODEL	DESCRIPTION	PRICE
AOS-62	Strike Plate — M62, Offset	\$119
AOS-62D	Strike Plate — M62D, Offset	\$147
AOS-82	Strike Plate — M82, Offset	\$156
APS-32	Strike Plate — M32	\$112
APS-62	Strike Plate — M62	\$125
APS-82	Strike Plate — M82	\$146
ASS-32	Strike Plate M32 — Split Set w/ Fasteners & Sex Bolt	\$160
ASS-62	Strike Plate M62 — Split Set w/ Fasteners & Sex Bolt	\$183
ASS-82	Strike Plate M82 — Split Set w/Fasteners & Sex Bolt	\$205
DC-32BK	Dress Cover — M32, Black Anodized	\$44
DC-32BP	Dress Cover — M32, Brass Polished	\$114
DC-32CL	Dress Cover — M32, Clear Anodized	\$44
DC-32SP	Dress Cover — M32, Stainless Polished	\$114
DC-62BK	Dress Cover — M62, Black Anodized	\$44
DC-62BP	Dress Cover — M62, Brass Polished	\$114
DC-62CL	Dress Cover — M62, Clear Anodized	\$44
DC-62SP	Dress Cover — M62, Stainless Polished	\$114
DC-82BK	Dress Cover — M82, Black Anodized	\$49
DC-82BP	Dress Cover — M82, Brass Polished	\$119
DC-82CL	Dress Cover — M82, Clear Anodized	\$49
DC-82SP	Dress Cover — M82, Stainless Polished	\$119
DDC-32BK	Double Dress Cover — M32, Black Anodized	\$72
DDC-32CL	Double Dress Cover — M32, Clear Anodized	\$72
DDC-62BK	Double Dress Cover — M62, Black Anodized	\$72
DDC-62CL	Double Dress Cover — M62, Clear Anodized	\$72
EASB-250	Energy Absorbing Bolt — 1/4" Spacer Kit	\$44
EASB-32	Energy Absorbing Sex Bolt — M32	\$253
EASB-62	Energy Absorbing Sex Bolt — M62	\$339
EASB-82	Energy Absorbing Sex Bolt — M82	\$339
HHD-32	Lock Housing for M32 — Double Horizontal	\$868
HHD-62	Lock Housing for M62 — Double Horizontal	\$868
HHD-82	Lock Housing for M82 — Double Horizontal	\$868
HHSL-32	Lock Housing for M32 — Single Horizontal w/ Left Hand Reverse	\$721
HHSL-62	Lock Housing for M62 — Single Horizontal w/ Left Hand Reverse	\$721
HHSR-32	Lock Housing for M32 — Single Horizontal w/ Right Hand Reverse	\$721
HHSR-62	Lock Housing for M62 — Single Horizontal w/ Right Hand Reverse	\$721
HVD-32	Lock Housing for M32 — Double Vertical	\$877
HVD-62	Lock Housing for M62 — Double Vertical	\$877
HVD-82	Lock Housing for M82 — Double Vertical	\$877
SASM	Shock Absorbing Strike Mount for M32, M62, M82	\$69
SB-1	Sex Bolt — Replacement, Clear	\$12
SB-1-03	Sex Bolt — Replacement, Polished Brass	\$31
SB-1-10B	Sex Bolt — Replacement, Oil-Rubbed Bronze	\$31
TDK-1	Thick Door Kit	\$28

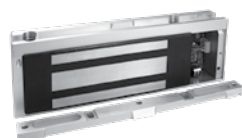
Securitron M38



M38 600 lbs Durable Magnalocks

MODEL	DESCRIPTION	PRICE
M38	M38 Magnalock — 12/24 VDC	\$409
M38D	M38 Magnalock — 12/24 VDC, DPS	\$476
M38DL	M38 Magnalock — 12/24 VDC, DPS, LED	\$506
M38DLS	M38 Magnalock — 12/24 VDC, DPS, LED, Senstat	\$572
M38DLST	M38 Magnalock — 12/24 VDC, DPS, LED, Senstat, Tamper	\$622
M38DS	M38 Magnalock — 12/24 VDC, DPS, Senstat	\$544
M38S	M38 Magnalock — 12/24VDC Senstat	\$477

Securitron M68



M68 1,200 lbs Durable Magnalocks

MODEL	DESCRIPTION	PRICE
M68	M68 Magnalock — 12/24 VDC	\$511
M68D	M68 Magnalock — 12/24 VDC, DPS	\$577
M68DL	M68 Magnalock — 12/24 VDC, DPS, LED	\$606
M68DLS	M68 Magnalock — 12/24 VDC, DPS, LED, Senstat	\$673
M68DLST	M68 Magnalock — 12/24 VDC, DPS, LED, Senstat, Tamper	\$723
M68DS	M68 Magnalock — 12/24 VDC, DPS, Senstat	\$644
M68S	M68 Magnalock — 12/24 VDC, Senstat	\$577

M38, M68 Accessories

MODEL	DESCRIPTION	PRICE
DC-38SP	Dress Cover — M38, Stainless Polished	\$114
DC-68SP	Dress Cover — M68, Stainless Polished	\$114
TJ-38CL	In-Swing Door Kit — M38, Clear Anodized	\$190
TJ-68CL	In-Swing Door Kit — M68, Clear Anodized	\$190

Additional Universal Magnetic Lock Mounting Brackets on Page 42

HOW TO ORDER *Specify quantity and the following information. Order related products separately.*

MODEL SERIES	MONITORING OPTIONS
M38	DLST
M38 (600lbs)	(blank) No Monitoring
M68 (1,200 lbs)	D Door Position Switch
	L LED Indicator
	S Senstat Monitor
	T Tamper Monitor

Securitron

Universal Magnalock Accessories

MODEL	DESCRIPTION	PRICE
AKG	Adhesive Kit for GDB	\$168
DCP-12X3	Dress Cover Plate, 12" x 3" for larger strikes (M380, M680)	\$33
GDB	Glass Door Bracket	\$69
HEB-1BK-8	Header Extension Bracket — 1 x 1 x 8, Black Anodized	\$50
HEB-1BK-12	Header Extension Bracket — 1 x 1 x 12, Black Anodized	\$59
HEB-1CL-8	Header Extension Bracket — 1 x 1 x 8, Clear Anodized	\$42
HEB-1CL-12	Header Extension Bracket — 1 x 1 x 12, Clear Anodized	\$46
HEB-2BK-8	Header Extension Bracket — 2 x 2 x 8, Black Anodized	\$66
HEB-2BK-12	Header Extension Bracket — 2 x 2 x 12, Black Anodized	\$68
HEB-2CL-8	Header Extension Bracket — 2 x 2 x 8, Clear Anodized	\$55
HEB-2CL-12	Header Extension Bracket — 2 x 2 x 12, Clear Anodized	\$60
HEB-3BK-8	Header Extension Bracket — 3 x 3 x 8, Black Anodized	\$77
HEB-3BK-12	Header Extension Bracket — 3 x 3 x 12, Black Anodized	\$85
HEB-3CL-8	Header Extension Bracket — 3 x 3 x 8, Clear Anodized	\$68
HEB-3CL-12	Header Extension Bracket — 3 x 3 x 12, Clear Anodized	\$72
HEB-3G	Header Extension Bracket — 3 x 3 x 8 for Glass Door, Clear Anodized	\$81
IK	Installation Kit	\$505
SFP-1/2BK-8	Stop Filler Plate — 1/2 x 1-1/4 x 8, Black Anodized	\$38
SFP-1/2BK-12	Stop Filler Plate — 1/2 x 1-1/4 x 12, Black Anodized	\$41
SFP-1/2CL-8	Stop Filler Plate — 1/2 x 1-1/4 x 8, Clear Anodized	\$27
SFP-1/2CL-12	Stop Filler Plate — 1/2 x 1-1/4 x 12, Clear Anodized	\$31
SFP-1/4BK-8	Stop Filler Plate — 1/4 x 1-1/4 x 8, Black Anodized	\$38
SFP-1/4BK-12	Stop Filler Plate — 1/4 x 1-1/4 x 12, Black Anodized	\$41
SFP-1/4CL-8	Stop Filler Plate — 1/4 x 1-1/4 x 8, Clear Anodized	\$28
SFP-1/4CL-12	Stop Filler Plate — 1/4 x 1-1/4 x 12, Clear Anodized	\$31
SFP-3/8BK-8	Stop Filler Plate — 3/8 x 1-1/4 x 8, Black Anodized	\$38
SFP-3/8BK-12	Stop Filler Plate — 3/8 x 1-1/4 x 12, Black Anodized	\$41
SFP-3/8CL-8	Stop Filler Plate — 3/8 x 1-1/4 x 8, Clear Anodized	\$28
SFP-3/8CL-12	Stop Filler Plate — 3/8 x 1-1/4 x 12, Clear Anodized	\$32
SFP-5/8BK-8	Stop Filler Plate — 5/8 x 1-1/4 x 8, Black Anodized	\$38
SFP-5/8BK-12	Stop Filler Plate — 5/8 x 1-1/4 x 12, Black Anodized	\$43
SFP-5/8CL-8	Stop Filler Plate — 5/8 x 1-1/4 x 8, Clear Anodized	\$30
SFP-5/8CL-12	Stop Filler Plate — 5/8 x 1-1/4 x 12, Clear Anodized	\$33
UHB-BK-8	Universal Header Bracket — 8", Black Anodized	\$88
UHB-BK-12	Universal Header Bracket — 12", Black Anodized	\$122
UHB-CL-8	Universal Header Bracket — 8", Clear Anodized	\$76
UHB-CL-12	Universal Header Bracket — 12", Clear Anodized	\$108

Securitron DM62



DM62 Double 1,200 lbs Magnalocks

MODEL	DESCRIPTION	PRICE
DM62	Magnalock 62 [Double] — 12/24 VDC	\$951
DM62B	Magnalock 62 [Double] — 12/24 VDC, MBS	\$1,159
DM62D	Magnalock 62 [Double] — 12/24 VDC, DPS	\$1,094
DM62BD	Magnalock 62 [Double] — 12/24 VDC, MBS, DPS	\$1,279
-OS	Offset Strike Option	Adds \$0

DM62 Accessories

MODEL	DESCRIPTION	PRICE
ASCWB-DM62CL	Alum 1-1/2" Spacer — Concrete/Wood Bracket, DM62, Clear	\$168

HOW TO ORDER *Specify quantity and the following information. Order related products separately.*

MODEL SERIES	MONITORING OPTIONS	STRIKE PLATE OPTIONS
DM62	BD	– OS
DM62	(blank) No Monitoring	(blank) Standard Strike
	B BondStat Monitor	OS Offset Strike
	D Door Position Switch	

Securitron
SAM, SAM2, M34R

SAM, SAM2, M34R Shear Aligning Magnalocks

MODEL	DESCRIPTION	PRICE
SAM	Shear Magnalock — 12/24 VDC, Self Aligning, 1,200 lbs	\$908
SAMB	Shear Magnalock — 12/24 VDC, Self Aligning, MBS, 1,200 lbs	\$989
SAMD	Shear Magnalock — 12/24 VDC, Self Aligning, DPS, 1,200 lbs	\$968
SAMBD	Shear Magnalock — 12/24 VDC, Self Aligning, MBS, DPS, 1,200 lbs	\$1,046
M34R	M34 Magnalock — 12/24 VDC, Recessed, 500 lbs	\$404
M34RB	M34 Magnalock — 12/24 VDC, Recessed, MBS, 500 lbs	\$511
M34RD	M34 Magnalock — 12/24 VDC, Recessed, DPS, 500 lbs	\$477
M34RBD	M34 Magnalock — 12/24 VDC, Recessed, MBS, DPS, 500 lbs	\$571
SAM2-24	Mini Shear Magnalock — 24 VDC, 600 lbs	\$716
SAM2C-24	Mini Shear Magnalock 24VDC, 600 lbs, Bond Sensor	\$879

**Securitron
SAM, M34R**



SAM, M34R Accessories

MODEL	DESCRIPTION	PRICE
SWB-03	SAM Wood Bracket — Brass Polished	\$158
SWB-10B	SAM Wood Bracket — Oil Rubbed Bronze	\$123
SWB-26D	SAM Wood Bracket — Satin Stainless	\$93
SMLS	Surface Mount Housing Lock — Shear	\$172
SMSS	Surface Mount Housing Strike — Shear	\$167

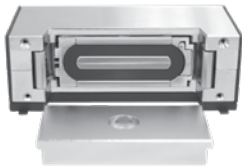
HOW TO ORDER *Specify quantity and the following information. Order related products separately.*

MODEL SERIES	MONITORING OPTIONS
SAM	BD
SAM (1,200 lbs)	(blank) No Monitoring
M34R (500 lbs)	B BondStat Monitor
	D Door Position Switch

HOW TO ORDER *Specify quantity and the following information. Order related products separately.*

MODEL SERIES	MONITORING OPTIONS	VOLTAGE
SAM2	C	- 24
SAM2 (600 lbs)	(blank) No Monitoring	24V operation only (default)
	C Bond Sensor	

Securitron MM15



MM15 4,000 lbs Electromechanical Magnalocks

MODEL	DESCRIPTION	PRICE
MM15	Electromechanical Magnalock — 12/24V, AC/DC	\$453
MM15DT	Electromechanical Magnalock — 12/24V, AC/DC, DPS, Tamper	\$555
MM15G	Electromechanical Magnalock — 12/24V, AC/DC,, Gate Conduit	\$503
MM15GDT	Electromechanical Magnalock — 12/24V, AC/DC, Gate Conduit, DPS, Tamper	\$583

Securitron MM15 MM15 Brackets

MODEL	DESCRIPTION	PRICE
SFP-1/2BKMM15	Stop Filler Plate — 1/2" for MM15, Black Finish	\$42
SFP-1/2CLMM15	Stop Filler Plate — 1/2" for MM15, Clear Finish	\$31
SFP-3/8BKMM15	Stop Filler Plate — 3/8" for MM15, Black Finish	\$42
SFP-3/8CLMM15	Stop Filler Plate — 3/8" for MM15, Clear Finish	\$31
SFP-5/8BKMM15	Stop Filler Plate — 5/8" for MM15, Black Finish	\$44
SFP-5/8CLMM15	Stop Filler Plate — 5/8" for MM15, Clear Finish	\$33
DC-MM15BK	Dress Cover — MM15, Black	\$39
DC-MM15BP	Dress Cover — MM15, Polished Brass	\$103
DC-MM15BS	Dress Cover — MM15, Satin Brass	\$112
HEB-1BK-MM15	Header Extension Bracket — 1" for MM15 Series, Black Finish	\$49
HEB-1CL-MM15	Header Extension Bracket — 1" for MM15 Series #130, Clear Finish	\$39
HEB-2BK-MM15	Header Extension Bracket — 2" for MM15 Series, Black Finish	\$49
HEB-2CL-MM15	Header Extension Bracket — 2" for MM15 Series #130, Clear Finish	\$39
HEB-3BK-MM15	Header Extension Bracket — 3" for MM15 Series, Black Finish	\$49
HEB-3CL-MM15	Header Extension Bracket — 3" for MM15 Series #130, Clear Finish	\$39
MM15-TS	Tamper Shield for MM15 — Stainless Steel	\$40
Z-MM15BK	Z-Bracket — MM15, Black	\$119
Z-MM15CL	Z-Bracket — MM15, Clear	\$107

HOW TO ORDER *Specify quantity and the following information. Order related products separately.*

MODEL SERIES	MOUNTING METHOD	MONITORING OPTIONS
MM15	G	DT
MM15	(blank) Direct Mount	(blank) No Monitoring
	G Gate Conduit	DT Door Position Switch and Tamper Switch

Securitron MCL



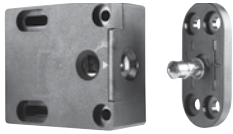
MCL Cabinet Magnalock

MODEL	DESCRIPTION	PRICE
MCL-24	Magnetic Cabinet Lock — 24 Volts, 170 lbs	\$238

HOW TO ORDER *Specify quantity and the following information. Order related products separately.*

MODEL SERIES
MCL-24
MCL-24

HES 610



610 Compact and Cost Effective Cabinet Lock

MODEL	PRICE
610 Cabinet Lock	\$118
610LM Cabinet Lock Monitored	\$164

HOW TO ORDER *Specify quantity and the following information. Order related products separately.*

SERIES	OPTION(S)
610	- LM
	(blank) No Monitoring
	LM Locked State Monitoring

HES 660



660 Multi-Purpose Electro-Mechanical Lock

MODEL & KEEPER	PRICE
660-12V	\$145
660-24V	\$145
660-12V LBSM	\$179
660-24V LBSM	\$179
660-12V Pre-load	\$215
660-24V Pre-load	\$215
660-12V LBSM Pre-load	\$245
660-24V LBSM Pre-load	\$245

660 Accessories

MODEL	PRICE
660 Key Override	\$80

HOW TO ORDER *Specify quantity and the following information. Order related products separately.*

SERIES	VOLTAGE	OPTION(S)
660	- 12V	- LBSM - Preload
	12V 12 Volt	(blank) No preload, no monitoring
	24V 24 Volt	Preload Up to 15 lbs.
		LBSM Locked state monitoring
		LBSM-Preload Locked state monitoring with Preload

HES K100



K100-622H Aperio® Cabinet Lock Factory Paired with Wiegand Hub

MODEL	PRICE
K100-622H-SE-B2 K100, iCLASS SE reader, Wholesale Kit with 1:1 Hub, Black, Thumbturn	\$849
K100-622H-PA-B2 K100, PROX, Wholesale Kit with 1:1 Hub, Black, Thumbturn	\$849
K100-622-SE-B2-MOUNT K100 Mounted Demo, iCLASS, SE, Black, Thumbturn	\$999

K100 Accessories

MODEL	PRICE
622-JSP K100-622 Jump Start Battery Pack	\$45
OBS-622 K Series Open Back Strike Plate	\$25

HOW TO ORDER Specify quantity and the following information. Order related products separately.

SERIES	MODEL	CREDENTIAL TECHNOLOGY	COLOR	TURN
K100	- 622H	- PA	- B	- 2
	622H Factory Paired*	PA HID® 125 kHz Prox	B Black	2 Thumbturn
		SE HID® 13.56 MHz iCLASS® SE		

*Kit includes integrated lock paired with Wiegand 1:1 wireless hub

HES K100: The HES K100 cabinet lock is available as either a pre-paired lock and hub kit (no certification required) or as a field configurable component (requires Aperio® Certified Integrator certification). Pre-paired kits support limited features, field configured devices are required in order to support all options. Visit www.IntelligentOpenings.com to learn more.

HES KS100



KS100-640H Aperio® Server Cabinet Lock Factory Paired with Wiegand Hub

MODEL	PRICE
KS100-640H-SE KS100, iCLASS SE, Black, Wholesale Kit with 1:1 Hub	\$949
KS100-640H-PA KS100, PROX, Black, Wholesale Kit with 1:1 Hub	\$949
KS100-640-SE-MOUNT KS100 Mounted Demo, iCLASS SE, Black with PoE Injector	\$999

KS100 Accessories

MODEL	PRICE
SFIC MEDECO X4 (2 Keys—1 Control, 1 User)	\$85
SFIC-BC KS SFIC Blank, Black Plastic Core	\$5
KS-DPS Surface Mount DPS (external)	\$18
KS-CAM45 CAM: 45MM—5	\$3
KS-CAM38 CAM: 38MM—1	\$3

HOW TO ORDER Specify quantity and the following information. Order related products separately.

SERIES	MODEL	CREDENTIAL TECHNOLOGY
KS100	- 640H	- PA
	640H Factory Paired*	PA HID® 125 kHz Prox
		SE HID® 13.56 MHz iCLASS® SE

*Kit includes integrated lock paired with Wiegand 1:1 wireless hub

HES KS100: The HES KS100 server cabinet lock is available as either a pre-paired lock and hub kit (no certification required) or as a field configurable component (requires Aperio® Certified Integrator certification). Pre-paired kits support limited features, field configured devices are required in order to support all options. Visit www.IntelligentOpenings.com to learn more.

HES K200



K200-622 Wiegand Cabinet Lock

MODEL	PRICE
K200-622-B2 K200, Wiegand, Multiclass Reader, Black, Thumbturn	\$599

K200 Accessories

MODEL	PRICE
OBS-622 K Series Open Back Strike Plate	\$25
CBL6-QC12 K200/KS200 Lock Side Interface Cable: 6 Foot, 12 Conductor and Molex both ends	\$45
CBL12-QC12 K200/KS200 System Side Interface Cable: 12 Foot, 12 Conductor and Molex one end, pinned one end	\$65
WT-1 Wiegand Test Box with LED Indicators	\$400
WT-2 Wiegand Test Box with LCD Backlit Display and LED Indicators	\$500

HOW TO ORDER *Specify quantity and the following information. Order related products separately.*

SERIES	MODEL	COLOR	TURN
K200	- 622	- B	2
	622 Wiegand, MultiCLASS SE	B Black	2 Thumbturn

HES KS200



KS200-640 Wiegand Server Cabinet Lock

MODEL	PRICE
KS200-640 KS200, Wiegand, multiCLASS SE, Black	\$549

KS200 Accessories

MODEL	PRICE
SFIC MEDECO X4 (2 Keys—1 Control, 1 User)	\$85
SFIC-BC KS SFIC Blank, Black Plastic Core	\$5
KS-DPS Surface Mount DPS (external)	\$18
KS-CAM45 CAM: 45MM—5	\$3
KS-CAM38 CAM: 38MM—1	\$3
CBL6-QC12 K200/KS200 Lock Side Interface Cable: 6 Foot, 12 Conductor and Molex both ends	\$45
CBL12-QC12 K200/KS200 System Side Interface Cable: 12 Foot, 12 Conductor and Molex one end, pinned one end	\$65
WT-1 Wiegand Test Box with LED Indicators	\$400
WT-2 Wiegand Test Box with LCD Backlit Display and LED Indicators	\$500

HOW TO ORDER *Specify quantity and the following information. Order related products separately.*

SERIES	MODEL
KS200	- 640
	640 Wiegand, MultiCLASS SE

Securitron GL1



GL1 Specialty Gate Locks

MODEL	DESCRIPTION	PRICE
GL1-FL	Gate Lock, 12/24 VDC, Standard Fail Locked	\$363
GL1-FLM	Gate Lock, 12/24 VDC, Monitored Fail Locked	\$374
GL1-FS	Gate Lock, 12/24 VDC, Standard Fail Safe	\$363
GL1-FSM	Gate Lock, 12/24 VDC, Monitored Fail Safe	\$374

GL1 Accessories

MODEL	DESCRIPTION	PRICE
FMB9-4	Post Shim Kit for Flex Mount Brackets — (Set of 4)	\$23
FMK-SL	Flex Mount Kit for Sliding Gate	\$111
FMK-SW	Flex Mount Kit for Swing Gate	\$138
GMC	Gate Lock Mortise Cylinder	\$39
GMC-HS-BK	Gate Lock Mortise Cylinder, Medeco SFIC, Black	—
GMC-HS-CL	Gate Lock Mortise Cylinder, Medeco SFIC, Clear Anodized	—

HOW TO ORDER *Specify quantity and the following information. Order related products separately.*

MODEL SERIES	LOCK FAIL STATE	MONITORING OPTIONS
GL1	– FS	
GL1	FL Fail Locked (Fail Secure)	(blank) No Monitoring
	FS Fail Safe	M Monitored

Securiton DK-12



DK-12 Stand Alone Keypads

MODEL	DESCRIPTION	PRICE
DK-12	Digital Keypad System w/ Illuminated keys — Single Gang	\$187

DK-12 Accessories

MODEL	DESCRIPTION	PRICE
WBB	Wall Mounted, Weatherized, Single Gang Box	\$37
WCC	Wall Mounted Weather Cover, Single Gang Box	\$50

HOW TO ORDER <i>Specify quantity and the following information. Order related products separately.</i>	
MODEL SERIES	
DK-12	
DK-12	Keypad

Securiton DK-16



DK-16 Keypad Systems

MODEL	DESCRIPTION	PRICE
DK-16	Keypad and Controller — Indoor, Single Gang	\$396
DK-16P	Keypad only — Indoor, Single Gang	\$196

DK-16 Accessories

MODEL	DESCRIPTION	PRICE
WBB	Wall Mounted, Weatherized, Single Gang Box	\$37
WCC	Wall Mounted Weather Cover, Single Gang Box	\$50

HOW TO ORDER <i>Specify quantity and the following information. Order related products separately.</i>	
MODEL SERIES	SPECIAL FEATURE
DK-16	P
DK-16 Keypad	P Keypad only

Securiton DK-26



DK-26 Keypad Systems

MODEL	DESCRIPTION	PRICE
DK-26BK	Keypad and Controller — Narrow Stile, Black Anodized	\$417
DK-26SS	Keypad and Controller — Narrow Stile, Stainless Steel	\$407
DK-26PBK	Keypad only — Narrow Stile, Black Anodized	\$217
DK-26PSS	Keypad only — Narrow Stile, Stainless Steel	\$206

HOW TO ORDER <i>Specify quantity and the following information. Order related products separately.</i>		
MODEL SERIES	SPECIAL FEATURE	FINISH
DK-26	P	BK
DK-26 Keypad	P Keypad only	BK Black Anodized
		SS Stainless Steel

Securitron DK-37



DK-37 Wiegand Keypads

MODEL	DESCRIPTION	PRICE
DK-37WBK	Wiegand Keypad — Narrow Stile, Black Anodized	\$223
DK-37WSS	Wiegand Keypad — Narrow Stile, Stainless Steel	\$213

HOW TO ORDER Specify quantity and the following information. Order related products separately.

MODEL SERIES	OUTPUT	FINISH
DK-37	W	BK
DK-37 Keypad	W Wiegand Output	BK Black Anodized
		SS Stainless Steel

Securitron DK-38



DK-38 Wiegand Keypads

MODEL	DESCRIPTION	PRICE
DK-38W	Wiegand Keypad — 12 Key Indoor Keypad	\$213

HOW TO ORDER Specify quantity and the following information. Order related products separately.

MODEL SERIES	OUTPUT
DK-38	W
DK-38 Keypad	W Wiegand Output

DK-38 Accessories

MODEL	DESCRIPTION	PRICE
WBB	Wall Mounted, Weatherized, Single Gang Box	\$37
WCC	Wall Mounted Weather Cover, Single Gang Box	\$50

Securitron R100-1H R100-1H Aperio® Reader Factory Paired with Wiegand Hub



MODEL	DESCRIPTION	PRICE
R100-1H-SE	R100, iCLASS SE, Aperio Wireless Reader with 1:1 Hub	\$749
R100-1H-PA	R100, Prox, Aperio Wireless Reader with 1:1 Hub	\$749
R100-1-SE-MNT	R100 Mounted Demo iCLASS SE	\$899

R100 Accessories

MODEL	DESCRIPTION	PRICE
R100-DCA	R100 Dress Cover, Stainless Steel	\$30

HOW TO ORDER Specify quantity and the following information. Order related products separately.

SERIES	MODEL	CARD TECHNOLOGY
R100	-1H	- SE
R100 Aperio® Wireless Reader	1H Factory Paired*	SE HID 13:56 MHz iClass SE®
		PA HID 125 MHz Prox®

*Kit includes integrated lock paired with Wiegand 1:1 wireless hub

SECURITRON R100: The Securitron R100 card reader is available as either a pre-paired reader and hub kit (no certification required) or as a field configurable component (requires Aperio® Certified Integrator certification). Pre-paired kits support limited features, field configured devices are required in order to support all options. Visit www.IntelligentOpenings.com to learn more.

Securitron WSS



WSS Wave Sense Switch

MODEL	DESCRIPTION	PRICE
WSS-W1	Wave Sense Switch — w/ White Single Gang Faceplate	\$379
WSS-W2	Wave Sense Switch — w/ White Double Gang Faceplate	\$379

WSS Accessories

MODEL	DESCRIPTION	PRICE
WBB	Wall Mounted, Weatherized, Single Gang Box	\$37
WCC	Wall Mounted Weather Cover, Single Gang Box	\$50

HOW TO ORDER *Specify quantity and the following information. Order related products separately.*

MODEL SERIES	FINISH	MOUNTING METHOD
WSS	- W	1
WSS Wave Sense Switch	W White	1 Single Gang
		2 Double Gang

Securitron EEB



EEB Emergency Exit Push Buttons

MODEL	DESCRIPTION	PRICE
EEB2	EEB w/30 Sec. Timer — Momentary, SPST, Single Gang, Green/Red/Blue/Handicap	\$142
EEB3N	EEB w/30 Sec. Timer — Momentary, SPST, Narrow, SPST, Green/Red	\$142

EEB Accessories

MODEL	DESCRIPTION	PRICE
PB2-LK	Illumination Kit for PB2E, PB5E, EEB2, Series Push Button	\$29
PB3-LK	Illumination Kit, Green/Red for PB3E/EEB3N Series	\$29
WBB	Wall Mounted, Weatherized, Single Gang Box	\$37
WCC	Wall Mounted Weather Cover, Single Gang Box	\$50

HOW TO ORDER *Specify quantity and the following information. Order related products separately.*

MODEL SERIES	LED LENS COLOR	MOUNTING METHOD
EEB	3	N
EEB Push Buttons	2 Green/ Red/ Handicap	(blank) Single Gang
	3 Green/Red	N Narrow Gang

Note: Not every combination above is possible. Please contact the factory if you need a combination of features not listed on this page

Securitron PB



PB Push Buttons

MODEL	DESCRIPTION	PRICE
PB	PB — Momentary, Illuminated, DPST, Single Gang, Green/Red Lens	\$158
PBA	PB — Alternate, Illuminated, DPST, Single Gang, Green/Red Lens	\$158

PB Accessories

MODEL	DESCRIPTION	PRICE
WBB	Wall Mounted, Weatherized, Single Gang Box	\$37
WCC	Wall Mounted Weather Cover, Single Gang Box	\$50

HOW TO ORDER *Specify quantity and the following information. Order related products separately.*

MODEL SERIES	SWITCH TYPE
PB	A
PB Push Button	(blank) Momentary Switch
	A Alternate Switch

Securitron PB2



PB2 Push Buttons

MODEL	DESCRIPTION	PRICE
PB2	PB-2", Illuminated, Momentary, SPDT, Single Gang, Green/Red/Handicap	\$101
PB22	PB-2", Illuminated, Momentary, DPDT, Single Gang, Green/Red/Handicap	\$158
PB2E	PB-2", Non-Illuminated, Momentary, SPDT, Single Gang, Green/Red/Handicap	\$72

PB2 Accessories

MODEL	DESCRIPTION	PRICE
PB2-LK	Illumination Kit for PB2E, PB5E, EEB2, Series Push Button	\$29
WBB	Wall Mounted, Weatherized, Single Gang Box	\$37
WCC	Wall Mounted Weather Cover, Single Gang Box	\$50

HOW TO ORDER *Specify quantity and the following information. Order related products separately.*

MODEL SERIES	ILLUMINATION	SWITCH PULL/THROW
PB2		2
PB2 Push Button	(blank) Illuminated	(blank) Single Pull, Double Throw
	E Non-Illuminated	2 Double Pull, Double Throw

Note: Not every combination above is possible. Please contact the factory if you need a combination of features not listed on this page

Securitron PB3



PB3 Push Buttons

MODEL	DESCRIPTION	PRICE
PB3	PB-Illuminated, Momentary, DPST/DPDT, Single Gang, Green/Red Lens	\$109
PB3A	PB-Illuminated, Alternate, DPST/DPDT, Single Gang, Green/Red Lens	\$109
PB3E	PB-Non-Illuminated, Momentary, DPST/DPDT, Single Gang, Green/Red Lens	\$80
PB3EA	PB-Non-Illuminated, Alternate, DPST/DPDT, Single Gang, Green/Red Lens	\$80
PB3N	PB-Illuminated, Momentary, DPST/DPDT, Narrow Stile, Green/Red Lens	\$109
PB3AN	PB-Illuminated, Alternate, DPST/DPDT, Narrow Stile, Green/Red Lens	\$109
PB3EAN	PB-Non-Illuminated, DPST/DPDT, Alternate, Narrow Stile, Green/Red Lens	\$80
PB3EN	PB-Non-Illuminated, Momentary, DPST/DPDT, Narrow Stile, Green/Red Lens	\$80
PB3ER	PB-Non-Illuminated, Remote Momentary, DPST/DPDT, Surface Mount, Green/Red Lens	\$80
PB3EAR	PB-Non-Illuminated, Remote Alternate, DPST/DPDT, Surface Mount, Green/Red Lens	\$80

PB3 Accessories

MODEL	DESCRIPTION	PRICE
PB3-LK	Illumination Kit, Green/Red for PB3E/EEB3N Series	\$29
WBB	Wall Mounted, Weatherized, Single Gang Box	\$37
WCC	Wall Mounted Weather Cover, Single Gang Box	\$50

HOW TO ORDER *Specify quantity and the following information. Order related products separately.*

MODEL SERIES	ILLUMINATION	SWITCH TYPE	MOUNTING METHOD
PB3	E	A	N
PB3 Push Button	(blank) Illuminated	(blank) Momentary Switch	(blank) Single Gang
	E Non-Illuminated	A Alternate Switch	2 Double Gang
			N Narrow Gang
			R Remote, Surface Mount

Securitron PB4L



PB4L Push Buttons

MODEL	DESCRIPTION	PRICE
PB4L-2	PB — Green Illuminated Halo, Momentary, DPDT, Single Gang, Green/Red LED	\$135
PB4LA-2	PB — Green Illuminated Halo, Alternate, DPDT, Single Gang, Green/Red LED	\$135
PB4LN-2	PB — Green Illuminated Halo, Momentary, DPDT, Narrow Stile, Green/Red LED	\$135
PB4LAN-2	PB — Green Illuminated Halo, Alternate, DPDT, Narrow Stile, Green/Red LED	\$135

HOW TO ORDER *Specify quantity and the following information. Order related products separately.*

MODEL SERIES	SWITCH TYPE	MOUNTING METHOD	SWITCH PULL/THROW
PB4L	A	N	- 2
PB4L Push Button	(blank) Momentary Switch	(blank) Single Gang	2 Double Pull, Double Throw Switch
	A Alternate Switch	N Narrow Gang	

Securitron PB5



PB5 Push Buttons

MODEL	DESCRIPTION	PRICE
PB5	PB — 2" Round Illuminated, Momentary, Single Gang, SPDT, Green/Red/Handicap	\$124
PB5E	PB — 2" Round Non-Illuminated, Momentary, Single Gang, SPDT, Green/Red/Handicap	\$95

HOW TO ORDER <i>Specify quantity and the following information. Order related products separately.</i>		
MODEL SERIES	ILLUMINATION	
PB5	E	
PB5 Push Button	(blank) Illuminated	
	E Non-Illuminated	

Push Button Accessories

MODEL	DESCRIPTION	PRICE
WBB	Wall Mounted, Weatherized, Single Gang Box	\$37
WCC	Wall Mounted Weather Cover, Single Gang Box	\$50
PB2-LK	Illumination Kit for PB2E, PB5E, EEB2, Series Push Button	\$29

Securitron SP-1



SP-1 Capacitive Button

MODEL	DESCRIPTION	PRICE
SP-1	Touch Sensor Plate	\$186
SP-1L	Label Touch Plate [SP-1]	\$7
SP-1LH	Label Touch Plate [SP-1] — Handicap Decal	\$7

HOW TO ORDER <i>Specify quantity and the following information. Order related products separately.</i>		
MODEL SERIES	LABEL	
SP-1	SP-1	
SP-1 Touch Sense Plate, Clear Anodized	L Touch To Exit	
	LH Handicap	

Securitron MK



MK Key Switches

MODEL	DESCRIPTION	PRICE
MK	MK — Momentary, SPDT, Single Gang, Green/Red LED	\$135
MK2	MK — Momentary, DPDT, Single Gang, Green/Red LED	\$158
MKA	MK — Alternate, SPDT, Single Gang, Green/Red LED	\$135
MKA2	MK — Alternate, DPDT, Single Gang, Green/Red LED	\$158
MKAN	MK — Alternate, SPDT, Narrow, Green/Red LED	\$135
MKAN2	MK — Alternate, DPDT, Narrow, Green/Red LED	\$158
MKAPZ	MK — Alternate, SPDT, Double Gang, Green/Red LED, Audible	\$203
MKN	MK — Momentary, SPDT, Narrow, Green/Red LED	\$135
MKN2	MK — Momentary, DPDT, Narrow, Green/Red LED	\$158
MKPZ	MK — Momentary, SPDT, Double Gang, Green/Red LED, Audible	\$203

Securitron MK

MK Accessories

MODEL	DESCRIPTION	PRICE
MKC-KD	Mortise Cylinder for MK Series	\$60
MKC-KA	Mortise Cylinder for MK Series-Keyed Alike	\$60
MKS	MK — Momentary, Switch Only	\$34
MKS2	MK — DPDT Momentary, Switch Only	\$57
MKSA	MK — Alternate, Switch Only	\$34
MKSA2	MK — DPDT Alternate, Switch Only	\$57

HOW TO ORDER Specify quantity and the following information. Order related products separately.

MODEL SERIES	SWITCH TYPE	MOUNTING METHOD	SPECIAL FEATURE
MK	A	N	2
MK Mortise Key Switch	(blank) Momentary Switch	(blank) Switch Gang	Z Audible
	A Alternate Switch	2 Double Gang	2 DPDT—Double Pull, Double Throw
		N Narrow Gang	

Note: Not every combination above is possible. Please contact the factory if you need a combination of features not listed on this page

Securitron KP-1



KP1 Key Switches

MODEL	DESCRIPTION	PRICE
KP1	KP1 — Tubular Key Switch, Momentary	\$169
KP1A	KP1 — Tubular Key Switch, Alternate	\$169

HOW TO ORDER Specify quantity and the following information. Order related products separately.

MODEL SERIES	SWITCH TYPE
KP1	A
KP1 Tubular Key Switch	(blank) Momentary Switch
	A Alternate Switch

Securitron XMS



XMS Request to Exit Motion Sensor

MODEL	DESCRIPTION	PRICE
XMS	Exit Motion Sensor	\$224

HOW TO ORDER Specify quantity and the following information. Order related products separately.

MODEL SERIES
XMS
XMS Exit Motion Sensor

Securitron DSB



DSB Dual Sense Bar

MODEL	DESCRIPTION	PRICE
DSB-BK	DSB — Black Anodized, Non-Illuminated, 36"	\$503
DSB-BK42	DSB — Black Anodized, Non-Illuminated, 42"	\$503
DSB-BK48	DSB — Black Anodized, Non-Illuminated, 48"	\$503
DSB-BKI	DSB — Black Anodized, Illuminated, 36"	\$667
DSB-BKI42	DSB — Black Anodized, Illuminated, 42"	\$667
DSB-BKI48	DSB — Black Anodized, Illuminated, 48"	\$667
DSB-CL	DSB — Clear Anodized, Non-Illuminated, 36"	\$493
DSB-CL42	DSB — Clear Anodized, Non-Illuminated, 42"	\$493
DSB-CL48	DSB — Clear Anodized, Non-Illuminated, 48"	\$493
DSB-CLI	DSB — Clear Anodized, Illuminated, 36"	\$657
DSB-CLI42	DSB — Clear Anodized, Illuminated, 42"	\$657
DSB-CLI48	DSB — Clear Anodized, Illuminated, 48"	\$657
EL-DSB-CL	DSB ElectroLynx® 36", Clear Anodized, Illuminated	\$530

DSB Accessories

MODEL	DESCRIPTION	PRICE
DSB-TDM	Through Door Mounting Kit for DSB	\$15
TCP-BK	Touch Bar Cover Plates — Set of 2, Black Anodized	\$88
TCP-CL	Touch Bar Cover Plates — Set of 2, Clear Anodized	\$88

HOW TO ORDER <i>Specify quantity and the following information. Order related products separately.</i>				
CONNECTOR STYLE	MODEL SERIES	FINISH	ILLUMINATION	BAR LENGTH
EL	– DSB	– CL	I	42
(blank) No Connectors	DSB Dual Sense Bar	BK Black Anodized	(blank) Non Illuminated	(blank) 36" Standard Unit
EL Electrolynx Connectors		CL Clear Anodized	I Illuminated	42"
				48"
Note: Not every combination above is possible. Please contact the factory if you need a combination of features not listed on this page				

Securitron TSB



TSB Touch Sense Bar

MODEL	DESCRIPTION	PRICE
TSB-BK	TSB — Black Anodized, 36"	\$457
TSB-BK-42	TSB — Black Anodized, 42"	\$457
TSB-BK-48	TSB — Black Anodized, 48"	\$457
TSB-BKT	TSB — Black Anodized, Trailing Edge Timer [3 Sec.], 36"	\$457
TSB-CL	TSB — Clear Anodized, 36"	\$436
TSB-CL-42	TSB — Clear Anodized, 42"	\$436
TSB-CL-48	TSB — Clear Anodized, 48"	\$436
TSB-CLT	TSB — Clear Anodized, Trailing Edge Timer [3 Sec.], 36"	\$436
TSB-CLT-42	TSB — Clear Anodized, Trailing Edge Timer [3 Sec.], 42"	\$436
EL-TSB-BK	TSB ElectroLynx® — Black Anodized, 36"	\$476
EL-TSB-BK-42	TSB ElectroLynx® — Black Anodized, 42"	\$476
EL-TSB-BK-48	TSB ElectroLynx® — Black Anodized, 48"	\$476
EL-TSB-CL	TSB ElectroLynx® — Clear Anodized, 36"	\$454
EL-TSB-CL-42	TSB ElectroLynx® — Clear Anodized, 42"	\$454
EL-TSB-CL-48	TSB ElectroLynx® — Clear Anodized, 48"	\$454
DTSB-BK	Dummy TSB Bar — Black Anodized w/End Caps & Fasteners, 36"	\$246
DTSB-BK-42	Dummy TSB Bar — Black Anodized w/End Caps & Fasteners, 42"	\$246
DTSB-BK-48	Dummy TSB Bar — Black Anodized w/End Caps & Fasteners, 48"	\$246
DTSB-CL	Dummy TSB Bar — Clear Anodized w/End Caps & Fasteners, 36"	\$224
DTSB-CL-42	Dummy TSB Bar — Clear Anodized w/End Caps & Fasteners, 42"	\$224
DTSB-CL-48	Dummy TSB Bar — Clear Anodized w/End Caps & Fasteners, 48"	\$224

TSB Accessories

MODEL	DESCRIPTION	PRICE
TSB-TDM	Through Door Mounting Kit for TSB	\$15
TCP-BK	Touch Bar Cover Plates — Set of 2, Black Anodized	\$88
TCP-CL	Touch Bar Cover Plates — Set of 2, Clear Anodized	\$88

HOW TO ORDER <i>Specify quantity and the following information. Order related products separately.</i>				
CONNECTOR STYLE	MODEL SERIES	FINISH	SPECIAL FEATURES	BAR LENGTH
EL	– TSB	– CL	T	– 42
(blank) No Connectors	TSB Touch Sense Bar	BK Black Anodized	T Trailing Edge Timer	(blank) 36" Standard Unit
EL Electrolynx Connectors		CL Clear Anodized		42"
				48"

Note: Not every combination above is possible. Please contact the factory if you need a combination of features not listed on this page

Securitron EMB



EMB Electromechanical Bar

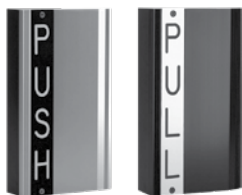
MODEL	DESCRIPTION	PRICE
EMB-BK	EMB — Black Anodized, 36"	\$277
EMB-BK-42	EMB — Black Anodized, 42"	\$277
EMB-BK-48	EMB — Black Anodized, 48"	\$277
EMB-CL	EMB — Clear Anodized, 36"	\$265
EMB-CL-42	EMB — Clear Anodized, 42"	\$265
EMB-CL-48	EMB — Clear Anodized, 48"	\$265
WEMB-BK	Weather Resistant EMB — Black Anodized, 36"	\$304
WEMB-BK-42	Weather Resistant EMB — Black Anodized, 42"	\$304
WEMB-BK-48	Weather Resistant EMB — Black Anodized, 48"	\$304
WEMB-CL	Weather Resistant EMB — Clear Anodized, 36"	\$293
WEMB-CL-42	Weather Resistant EMB — Clear Anodized, 42"	\$293
WEMB-CL-48	Weather Resistant EMB — Clear Anodized, 48"	\$293

EMB Accessories

MODEL	DESCRIPTION	PRICE
TCP-BK	Touch Bar Cover Plates — Set of 2, Black Anodized	\$88
TCP-CL	Touch Bar Cover Plates — Set of 2, Clear Anodized	\$88

HOW TO ORDER <i>Specify quantity and the following information. Order related products separately.</i>		
MODEL SERIES	FINISH	BAR LENGTH
EMB	- CL	- 48
EMB Electromechanical Bar	BK Black Anodized	(blank) 36" Standard Unit
WEMB Weather Resistant Electromechanical Bar	CL Clear Anodized	42"
		48"

Securitron TSH



TSH Touch Sense Handle

MODEL	DESCRIPTION	PRICE
TSH-BK	TSH — Push/Pull, Black Anodized	\$449
TSH-CL	TSH — Push/Pull, Black Anodized	\$449
EL-TSH-BK	TSH ElectroLynx® — Push/Pull, Black Anodized	\$476
EL-TSH-CL	TSH ElectroLynx® — Push/Pull, Black Anodized	\$476

HOW TO ORDER *Specify quantity and the following information. Order related products separately.*

CONNECTOR STYLE	MODEL SERIES	FINISH
EL	– TSH	– CL
(blank) No Connectors	TSH Touch Sense Handle	BK Black Anodized
EL Electrolynx Connectors		CL Clear Anodized

Securitron EMH



EMH Electromechanical Handle

MODEL	DESCRIPTION	PRICE
EMH-BK	EMH — Push/Pull, Black Anodized	\$443
EMH-CL	EMH — Push/Pull, Black Anodized	\$443
EL-EMH-CL	EMH ElectroLynx® — Push/Pull, Black Anodized	\$464

HOW TO ORDER *Specify quantity and the following information. Order related products separately.*

CONNECTOR STYLE	MODEL SERIES	FINISH
EL	– EMH	– CL
(blank) No Connectors	EMH Electromechanical Handle	BK Black Anodized
EL Electrolynx Connectors		CL Clear Anodized

Securitron BPS



BPS Linear Power Supplies

MODEL	DESCRIPTION	PRICE
BPS-12/24-1	Dual Voltage Power Supply — 12/24 VDC, 1A	\$280
BPS-12-1	Power Supply — 12 VDC, 1A	\$226
BPS-12-3	Power Supply — 12 VDC, 3A	\$440
BPS-12-45	Power Supply — 12 VDC, 4.5A	\$710
BPS-12-6	Power Supply — 12 VDC, 6A	\$788
BPS-12-9	Power Supply — 12 VDC, 9A	\$952
BPS-12-15	Power Supply — 12 VDC, 15A	\$1,172
BPS-24-1	Power Supply — 24 VDC, 1A	\$226
BPS-24-2	Power Supply — 24 VDC, 2A	\$440
BPS-24-3	Power Supply — 24 VDC, 3A	\$665
BPS-24-4	Power Supply — 24 VDC, 4A	\$788
BPS-24-6	Power Supply — 24 VDC, 6A	\$952
BPS-24-10	Power Supply — 24 VDC, 10A	\$1,172
BPSM-12-6	Power Supply — 12 VDC, 6A, Status Monitor	\$833
BPSM-12-9	Power Supply — 12 VDC, 9A, Status Monitor	\$998
BPSM-12-15	Power Supply — 12 VDC, 15A, Status Monitor	\$1,216
BPSM-24-4	Power Supply — 24 VDC, 4A, Status Monitor	\$833
BPSM-24-6	Power Supply — 24 VDC, 6A, Status Monitor	\$998
BPSM-24-10	Power Supply — 24 VDC, 10A, Status Monitor	\$1,216

BPS Accessories

MODEL	DESCRIPTION	PRICE
PSM-12	Power Supply Monitor - 12 VDC	\$666.00
PSM-24	Power Supply Monitor - 24 VDC	\$666.00
B-12-5	Battery - 12 VDC, 5AMP	\$50.00
B-24-5	Battery - 24 VDC, 5AMP	\$105.00
FAR-12	Fire Alert Reset Control - 12 VDC	\$263.00
FAR-24	Fire Alert Reset Control - 24 VDC	\$263.00
CCB-8-12	Central Control Board - 12 VDC, 8 Fused Outputs	\$109.00
CCB-8-24	Central Control Board - 24 VDC, 8 Fused Outputs	\$109.00
CKL	Cabinet Key Lock	\$24.00

HOW TO ORDER *Specify quantity and the following information. Order related products separately.*

MODEL SERIES	SWITCH TYPE	VOLTAGE	OUTPUT POWER
BPS	M	- 24	-X
BPS	(blank) No Monitoring	12 12VDC	X Output in Amps
	M PSM Monitoring	24 24VDC	

Securitron



Switching Power Supplies

MODEL	DESCRIPTION	PRICE
1.5 / 3A @ 24/12 VDC		
AQD3	Power Supply — 3/1.5A, 12/24 VDC, Supervised in Enclosure	\$231
AQD3-1R	Power Supply — 3/1.5A, 12/24 VDC, 1 Output, 1 FT	\$306
AQD3-4C	Power Supply — 3/1.5A, 12/24 VDC, 4 PTC Outputs	\$283
AQD3-4F	Power Supply — 3/1.5A, 12/24 VDC, 4 Fused Outputs	\$278
AQD3-8C	Power Supply — 3/1.5A, 12/24 VDC, 8 PTC Outputs	\$303
AQD3-8C1R	Power Supply — 3/1.5A, 12/24 VDC, 8 PTC Outputs, 1 FT	\$374
AQD3-8F	Power Supply — 3/1.5A, 12/24 VDC, 8 Fused Outputs	\$306
AQD3-8F8R	Power Supply — 3/1.5A, 12/24 VDC, 8 Fused Outputs, FT	\$440
AQD3B	Power Supply Board — 3/1.5A, 12/24 VDC, Supervised	\$158
3 / 5A @ 24/12 VDC		
AQD5	Power Supply — 5/3A, 12/24 VDC, Supervised in Enclosure	\$306
AQD5-1R	Power Supply — 5/3A, 12/24 VDC, 1 Output, 1 FT	\$318
AQD5-4C	Power Supply — 5/3A, 12/24 VDC, 4 PTC Outputs	\$348
AQD5-4F	Power Supply — 5/3A, 12/24 VDC, 4 Fused Outputs	\$346
AQD5-8C	Power Supply — 5/3A, 12/24 VDC, 8 PTC Outputs	\$366
AQD5-8C1R	Power Supply — 5/3A, 12/24 VDC, 8 PTC Outputs, FT	\$401
AQD5-8F	Power Supply — 5/3A, 12/24 VDC, 8 Fused Outputs	\$350
AQD5-8F8R	Power Supply — 5/3A, 12/24 VDC, 8 Fused Outputs, Relays, FT	\$485
AQD5B	Power Supply Board — 5/3A, 12/24 VDC, Supervised	\$241
6 / 6A @ 24/12 VDC		
AQD6	Power Supply — 6A, 12/24 VDC, Supervised in Enclosure	\$343
AQD6-16C	Power Supply — 6A, 12/24 VDC, 16 PTC Outputs	\$436
AQD6-16F	Power Supply — 6A, 12/24 VDC, 16 Fused Outputs	\$436
AQD6-8C	Power Supply — 6A, 12/24 VDC, 8 PTC Outputs	\$372
AQD6-8C1R	Power Supply — 6A, 12/24 VDC, 8 PTC Outputs, FT	\$421
AQD6-8F	Power Supply — 6A, 12/24 VDC, 8 Fused Outputs	\$372
AQD6-8F8R	Power Supply — 6A, 12/24 VDC, 8 Fused Outputs, Relays, FT	\$456
AQD6B	Power Supply Board — 6A, 12/24 VDC, Supervised	\$270
10 / 20A @ 24/12 VDC		
AQM20	Power Supply — 20/10A, 12/24 VDC in Enclosure	\$580
AQM20-16C	Power Supply — 20/10A, 12/24 VDC, 16 PTC Outputs	\$706
AQM20-16F	Power Supply — 20/10A, 12/24 VDC, 16 Fused Outputs	\$678
AQM20-8C	Power Supply — 20/10A, 12/24 VDC, 8 PTC Outputs	\$644
AQM20-8C8R	Power Supply — 20/10A, 12/24 VDC, 8 PTC Outputs, Relays, FT	\$820
AQM20-8F	Power Supply — 20/10A, 12/24 VDC, 8 Fused Outputs	\$628
AQM20-8F8R	Power Supply — 20/10A, 12/24 VDC, 8 Fused Outputs, Relays, FT	\$820
AQM20B	Power Supply Board — 20/10A, 12/24 VDC	\$451

Securitron

Switching Power Supplies CONTINUED

MODEL	DESCRIPTION	PRICE
6A @ 12V		
AQU126	Power Supply — 6A, 12 VDC, Supervised in Enclosure	\$340
AQU126-8C	Power Supply — 6A, 12 VDC, 8 PTC Outputs	\$402
AQU126-8C1R	Power Supply — 6A, 12 VDC, 8 PTC Outputs, FT	\$467
AQU126-8C8R	Power Supply — 6A, 12 VDC, 8 PTC Outputs, Relays, FT	\$577
AQU126-8F	Power Supply — 6A, 12 VDC, 8 Fused Outputs	\$349
AQU126-8F8R	Power Supply — 6A, 12 VDC, 8 Fused Outputs, Relays, FT	\$577
AQU126B	Power Supply Board — 6A, 12 VDC, Supervised	\$259
8A @ 12V		
AQU128	Power Supply — 8A, 12 VDC, Supervised in Enclosure	\$367
AQU128-16C	Power Supply — 8A, 12 VDC, 16 PTC Outputs	\$545
AQU128-16C16R	Power Supply — 8A, 12 VDC, 16 PTC Outputs, Relays, FT	\$893
AQU128-16F16R	Power Supply — 8A, 12 VDC, 16 Fused Outputs, Relays, FT	\$776
AQU128-8C	Power Supply — 8A, 12 VDC, 8 PTC Outputs	\$420
AQU128-8C1R	Power Supply — 8A, 12 VDC, 8 PTC Outputs, FT	\$481
AQU128-8C8R	Power Supply — 8A, 12 VDC, 8 PTC Outputs, Relays, FT	\$573
AQU128-8F8R	Power Supply — 8A, 12 VDC, 8 Fused Outputs, Relays, FT	\$573
AQU128B	Power Supply Board — 8A, 12 VDC, Supervised	\$237
3A @ 24V		
AQU243	Power Supply — 3A, 24 VDC, Supervised in Enclosure	\$296
AQU243-8C	Power Supply — 3A, 24 VDC, 8 PTC Outputs	\$349
AQU243-8C1R	Power Supply — 3A, 24 VDC, 8 PTC Outputs, FT	\$407
AQU243-8C8R	Power Supply — 3A, 24 VDC, 8 PTC Outputs, Relays, FT	\$501
AQU243-8F	Power Supply — 3A, 24 VDC, 8 Fused Outputs	\$337
AQU243-8F8R	Power Supply — 3A, 24 VDC, 8 Fused Outputs, Relays, FT	\$501
AQU243B	Power Supply Board — 3A, 24 VDC, Supervised	\$226
4A @ 24V		
AQU244	Power Supply — 4A, 24 VDC, Supervised	\$367
AQU244-16C	Power Supply — 4A, 24 VDC, 16 PTC Outputs	\$474
AQU244-16C16R	Power Supply — 4A, 24 VDC, 16 PTC Outputs, Relays, FT	\$759
AQU244-16F16R	Power Supply — 4A, 24 VDC, 16 Fused Outputs, Relays, FT	\$759
AQU244-8C	Power Supply — 4A, 24 VDC, 8 PTC Outputs	\$420
AQU244-8C1R	Power Supply — 4A, 24 VDC, 8 PTC Outputs, FT	\$477
AQU244-8C8R	Power Supply — 4A, 24 VDC, 8 PTC Outputs, Relays, FT	\$570
AQU244-8F8R	Power Supply — 4A, 24 VDC, 8 Fused Outputs, Relays, FT	\$570

HOW TO ORDER *Specify quantity and the following information. Order related products separately.*

MODEL SERIES	MONITORING	VOLTAGE	OUTPUT POWER	NUMBER OF OUTPUTS	FUSE TYPE	NUMBER OF RELAYS	RELAYS
AQ	D		6	-8	F	8	R
AQ	D Dual Voltage	(blank) Dual Voltage	X Output in Amps	(blank) No distribution board	F Glass Fuses	1	R Relays
	S Single Voltage	12 12VDC		4	C PTC Polyswitch	8	
	U Universal Input	24 24VDC		8		16	
	M Multiple Voltage			16			

Securiton EcoPower®



EcoPower® Eco Friendly Power Supply

MODEL	DESCRIPTION	PRICE
EPS-05	EcoPower — 0.5A, 2 Outputs for Low Power Locks	\$274
EPS-05B	EcoPower Power Supply Module	\$133

EcoPower® Accessories

MODEL	DESCRIPTION	PRICE
B-12-08	Battery — 12VDC — .8AMP	\$61

HOW TO ORDER Specify quantity and the following information. Order related products separately.

MODEL SERIES	OUTPUT POWER	OPTION(S)
EPS	- 05	B
EPS	05 0.5 Amps	(blank) PS, enclosure, battery B Circuit Board Only

Securiton BPSS



BPSS Solar Power Supplies

MODEL	DESCRIPTION	PRICE
BPSS-10	Solar Power Supply — 12V w/ 10W Solar Panel and 9Ah Battery	\$750
BPSS-20	Solar Power Supply — 12V w/ 20W Solar Panel and 18Ah Battery	\$850

BPSS Accessories

MODEL	DESCRIPTION	PRICE
PMK-3	Mounting Kit 3 in Pole for CCM Nema Enclosure	\$114
SPK	Solar Panel Kit — 20 Watt	\$751
SWK	High Wind Kit for 20W Solar Panel	\$145
B-12-9	Battery — 12 VDC, 9Ah	\$150
B-12-18	Battery — 12 VDC, 18Ah	\$200

HOW TO ORDER Specify quantity and the following information. Order related products separately.

MODEL SERIES	SOLAR PANEL OUTPUT
BPSS	- 10
BPSS Solar Power Supply	10 10 Watts 20 20 Watts

Securiton AQE



AQE Single-Port PoE

MODEL	DESCRIPTION	PRICE
AQE15	PoE Single Port MidSpan Injector, 1.4A, Dual Voltage	\$104
AQE30	PoE Single Port MidSpan Injector, 2.6A, Dual Voltage	\$162
AQE30E	PoE Single Port MidSpan Extractor, 0.6A	\$162

Securitron AQE



AQE Multi-Port Rack Mount PoE

MODEL	DESCRIPTION	PRICE
AQE250R	PoE 16 Port Rack Mount Injector, 256W	\$2,207
AQE500R	PoE 16 Port Rack Mount Injector, 540W	\$2,627

HOW TO ORDER *Specify quantity and the following information. Order related products separately.*

MODEL SERIES	POWER	FUNCTION	MOUNTING STYLE
AQE	500		R
AQE PoE	15	(blank) PoE Injector	(blank) Single Port
	30	E PoE Extractor	R Rack Mount Multi Port
	250		
	500		

Items can only be ordered as listed above

Securitron PSP



PSP Plug-In Power Supplies

MODEL	DESCRIPTION	PRICE
PSP-12	Power Supply Plug-In — 12 VDC, 700mA	\$46
PSP-24	Power Supply Plug-In — 24 VDC, 350mA	\$46
PSP-12-3	Power Supply Plug-In — 12 VDC, 3A	\$90
PSP-24-1.5	Power Supply Plug-In — 24 VDC, 1.5A	\$90

Other Power Products

MODEL	DESCRIPTION	PRICE
BR-4	Bridge Rectifier — 4A	\$32
B-12-08	Battery — 12VDC, 0.8Ah	\$61
B-12-5	Battery — 12 VDC, 5Ah	\$50
B-24-5	Battery — 24 VDC, 5Ah	\$105
CKL	Cabinet Key Lock	\$24
CCB-8-12	Central Control Board — 12 VDC, 8 Fused Outputs	\$109
CCB-8-24	Central Control Board — 24 VDC, 8 Fused Outputs	\$109
FAR-12	Fire Alert Reset Control — 12 VDC	\$263
FAR-24	Fire Alert Reset Control — 24 VDC	\$263
PSM-12	Power Supply Monitor — 12 VDC	\$666
PSM-24	Power Supply Monitor — 24 VDC	\$666

Securitron CEPT, ICPT, EPT, SEPT



Concealed Power Transfers

MODEL	DESCRIPTION	PRICE
CEPT-10	Electrical Power Transfer — US32D, Concealed, 10 Wire	\$390
CEPT-10-04	Electrical Power Transfer — US04/606, Concealed, 10 Wire	\$450
CEPT-10-10	Electrical Power Transfer — US10/612, Concealed, 10 Wire	\$450
CEPT-10-10B	Electrical Power Transfer — US10B/613, Concealed, 10 Wire	\$450
CEPT-C5E	Electrical Power Transfer — US32D, Concealed, CAT-5E	\$436
CEPT-C5E-04	Electrical Power Transfer — US04/606, Concealed, CAT-5E	\$495
CEPT-C5E-10	Electrical Power Transfer — US10/612, Concealed, CAT-5E	\$495
CEPT-C5E-10B	Electrical Power Transfer — US10B/613, Concealed, CAT-5E	\$495
EL-CEPT	Electrical Power Transfer — Concealed, US32D, ElectroLynx	\$482
EL-CEPT-04	Electrical Power Transfer — Concealed, US04/606, ElectroLynx	\$477
EL-CEPT-10	Electrical Power Transfer — Concealed, US10/612, ElectroLynx	\$477
EL-CEPT-10B	Electrical Power Transfer — Concealed, US10B/613, ElectroLynx	\$477
CEPT-NW	CEPT — without wires	\$390
ICPT	PowerJump Inductive Coupling Power Transfer	\$244
EPT	Electrical Power Transfer — Standard Version	\$67
EPTL	Electrical Power Transfer — Long Version	\$90
EPT-SC	Electrical Power Transfer — Swing Clear, Standard Version	\$101
EL-EPT	Electrical Power Transfer — Standard Version, ElectroLynx	\$104
EL-EPTL	Electrical Power Transfer — Long Version, ElectroLynx	\$126
EL-EPT-SC	Electrical Power Transfer — Swing Clear, Standard Version, ElectroLynx	\$137
SEPT	Electrical Power Transfer Square — Cut Standard Version	\$75
SEPT-10	Electrical Power Transfer Square — 10 Wire	\$107
SEPT-C5E	Electrical Power Transfer Square — Cut, Cat5E Compatible	\$102
EL-SEPT	Electrical Power Transfer — Square Cut, ElectroLynx	\$99

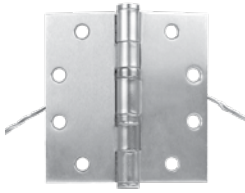
HOW TO ORDER Specify quantity and the following information. Order related products separately.

WIRE CONNECTORS	SHAPE	NUMBER OF WIRES	FINISH
EL	– CEPT	– C5E	– 10B
(blank) No Connectors	CEPT Concealed	(blank) 12 Wires	(blank) 630 finish (625 on SEPT)
EL Electrolynx Connectors	SEPT Square Cut	10 10 Wires	04 606 finish
		C5E 9 Wires	10 612 finish
			10B 613 finish

HOW TO ORDER Specify quantity and the following information. Order related products separately.

WIRE CONNECTIONS	SHAPE	DOOR SWING
EL	– EPT	– SC
(blank) No Connectors	EPT 10" Cord	(blank) Standard Swing
EL Electrolynx Connectors	EPTL 18" Cord	SC Swing Clear / Pivots
		C5E 9 Wires

Securitron EH



EH Electric Hinges

MODEL	DESCRIPTION	PRICE
EH-40	Electric Hinge Concealed — 6 Wire [4.5" x 4.0"]	\$277
EH-45	Electric Hinge Concealed — 6 Wire [4.5" x 4.5"]	\$277

HOW TO ORDER *Specify quantity and the following information. Order related products separately.*

MODEL SERIES	SIZE
EH	- 45
EH Electric Hinge	40 4" Length
	45 4.5" Length

Securitron TSB



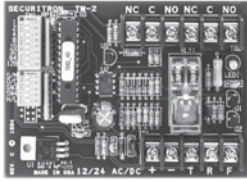
TSB Door Cords

MODEL	DESCRIPTION	PRICE
TSB-C	TSB — Door Cord w/ Caps, Gray/Black	\$34
TSB-CXL	TSB — Door Cord w/ Caps, Gray/Black w/ 36" cord	\$43

HOW TO ORDER *Specify quantity and the following information. Order related products separately.*

MODEL SERIES	SIZE
TSB-C	XL
TSB-C Door Cord	(blank) 18"
	XL 36"

Securatron TM-2, TM-9, DT-7 and PZ1



Timers & Alarms

MODEL	DESCRIPTION	PRICE
TM-2	TM — Multi-Function Timer, 1-255 seconds	\$142
TM-9	TM — Time Mate Timer, 2-36 Seconds	\$73
DT-7	DT — Digital Timer, 7 day	\$231
PZ1	Piezo on Keyplate — Single Gang	\$69

HOW TO ORDER *Specify quantity and the following information. Order related products separately.*

MODEL SERIES
TM-2
TM-2 Multi-Function Timer
TM-9 Time Mate
DT-7 Digital Timer
PZ1 Piezo Horn

Securatron DPS



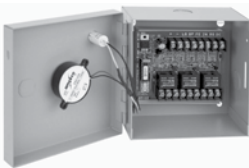
DPS Door Position Switches

MODEL	DESCRIPTION	PRICE
DPS-M-BK	DPS for Metal Doors — Black	\$29
DPS-M-GY	DPS for Metal Doors — Grey	\$29
DPS-M-WH	DPS for Metal Doors — White	\$29
DPS-W-BK	DPS for Wood Doors — Black	\$22
DPS-W-GY	DPS for Wood Doors — Grey	\$22
DPS-W-WH	DPS for Wood Doors — White	\$22

HOW TO ORDER *Specify quantity and the following information. Order related products separately.*

MODEL SERIES	DOOR TYPE	FINISH
DPS	- M	- BK
DPS Door Position Switch	M Metal Door	BK Black
	W Wood Door	GY Grey
		WH White

Securatron BA-DPA BA-DPA Door Prop Alarm Monitoring



MODEL	DESCRIPTION	PRICE
BA-DPA-12	Door Prop Alarm Timer — 12VDC w/Boxed Alarm	\$252
BA-DPA-24	Door Prop Alarm Timer — 24VDC w/Boxed Alarm	\$252

HOW TO ORDER *Specify quantity and the following information. Order related products separately.*

MODEL SERIES	VOLTAGE
BA-DPA	- 24
BA-DPA Door Prop Alarm Timer	12 12VDC
	24 24VDC

Securiton MSS



MSS High Security Door Position Switches

MODEL	DESCRIPTION	PRICE
MSS-1	MSS — Magnetic Switch/High Security	\$219
MSS-1C	MSS — Magnetic Switch/High Security, Concealed	\$219
MSS-1C-RT	MSS — Magnetic Switch/High Security, Concealed w/Remote Test	\$258
MSS-1G	MSS — Magnetic Switch/High Security, Surface Mount	\$219
MSS-1-RT	MSS — Magnetic Switch/High Security, w/Remote Test	\$258

HOW TO ORDER *Specify quantity and the following information. Order related products separately.*

MODEL SERIES	MOUNTING METHOD	SPECIAL FEATURE
MSS-1	C	- RT
MSS Magnetic Security Switch	C Concealed	RT Remote Test
	G Surface Mount	

Note: No other combinations of model numbers can be ordered other than what is listed

Securiton LM



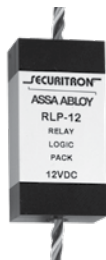
LM Latch Monitors

MODEL	DESCRIPTION	PRICE
LML-1	Latch Monitor for ANSI, 4-7/8", Strike, SPDT, 3A	\$116
LML-2	Latch Monitor for ANSI, 4-7/8", Strike, 2 Switches, SPDT, 3A	\$159
LMS-1	Latch Monitor for ANSI, 2-3/4", Strike, SPDT, 3A	\$116

HOW TO ORDER *Specify quantity and the following information. Order related products separately.*

MODEL SERIES	STRIKE SIZE	NUMBER OF SWITCHES
LM	L	- 2
LM Latch Monitor	L ANSI 4-7/8" Strike	1 Single Switch
	S ANSI 2-3/4" Strike	2 Dual Switches

Securiton RLP, RB-4



Relays & Logic Packs

MODEL	DESCRIPTION	PRICE
RLP-12	Relay Logic Pack — 12	\$58
RLP-24	Relay Logic Pack — 24	\$58
RB-4-12	Relay Board — 12VDC	\$114
RB-4-24	Relay Board — 24VDC	\$114

HOW TO ORDER *Specify quantity and the following information. Order related products separately.*

MODEL SERIES	VOLTAGE
RLP	- 12
RLP Relay Logic Pack	12 12VDC
RB-4 Relay Board	24 24VDC

ASSA ABLOY Electronic Security Hardware (ESH) Terms & Conditions

PRICES: All prices are subject to change without notice. Prices listed on the ESH website will serve as the most current list price. All shipments will be made at prices in effect at the time of shipment. The customer shall be responsible for payment of all applicable sales and/or use taxes and freight costs.

MINIMUM ORDER: Minimum product charge per invoice is \$150.00 USD.

PAYMENT TERMS: Net thirty (30) days from date of invoice. Interest at the rate of up to 1-1/2% per month may be charged on all past due accounts. An order received on an account which has not been paid within 45 days of the date of invoice may not be processed until the account is current. Custom orders may require a deposit.

DELIVERY TERMS: All prices are Ex-works factory. Purchaser assumes the risk of loss or damage to the goods while in transit from the point of shipment. ESH reserves the right to make delivery in installments. Installments shall be separately invoiced and paid for when due. Delay in delivery of an installment shall not relieve the purchaser of its obligation to accept remaining deliveries.

SHORTAGE: Any claim for shortages must be made to ESH in writing within one (1) week of receipt of merchandise.

WARRANTY RETURNS: A Customer Care Form (CCF) for defective product must be obtained from ESH before any merchandise can be returned. CCF's are valid for sixty (60) days from date of issuance. Goods returned under the terms of MagnaCare® and SecuriCare Warranties may require a copy of the original invoice.

RETURNS: A Customer Care Form (CCF) must be obtained from ESH before any merchandise can be returned. CCF's are valid for sixty (60) days from date of issuance. Items that are not factory sealed, or that are returned later than 90 days from the date of receipt are subject to a restocking charge plus an additional charge for any damage.

CANCELLATIONS: Any order may be subject to a 5% cancellation charge for catalog items. Cancellation of non-catalog or custom items will be subject to a 20% cancellation charge plus all costs (both direct and indirect) incurred by manufacturing at the point of cancellation that are properly allocated to the cancelled item(s).

LIMITATION OF LIABILITY: Neither party will be liable to the other for any delay or failure in performance arising directly out of war, sabotage, insurrection, riot, and any other act of civil disobedience, act of public enemy, fire, explosion, flood, storm, or other act of God or nature, or similar cause beyond its reasonable control, including shortage or unavailability of labor or materials. If, notwithstanding the foregoing limitations, ESH has any liability to the purchaser, the purchaser agrees that the total liability to the purchaser for all losses, damages, and causes of action, whether in contract, equity, tort (including without limitation, negligence and gross negligence), or otherwise, will not exceed the amount the purchaser paid to ESH for the products (including, without limitation, incidental or consequential damages, damages for lost profits or business interruption, and punitive damages).

NO THIRD PARTY LIABILITY: If the purchaser uses the ESH Products on behalf of others or provides to others any products referenced herein, the ESH Parties shall have no liability to such persons whatsoever, and the purchaser agree to defend and indemnify the ESH Parties from any and all claims and demands asserted against them, and from any legal fees, costs and other expenses that the HES Parties incur therewith.

Customers purchasing from Door Security Solutions Canada can find Canadian terms and conditions at www.assaabloy.ca/terms

ASSA ABLOY Electronic Security Hardware (ESH) Warranty Policy

In 1999 Securitron® introduced the first no-fault, no-questions asked warranty to the industry, MagnaCare®. As a part of HES and Securitron's transition to ASSA ABLOY Electronic Security Hardware (ESH), we believe that the best products in the industry should be supported by our commitment to deliver the highest quality products and services. ASSA ABLOY ESH is proud to now extend the most comprehensive no-fault, no-questions asked warranty coverage to all of our products and solutions. This is our expectation and commitment to you — our valued customer.

MagnaCare® Warranty

DURATION: Lifetime

CONDITION: Any reason, including, but not limited to, installation error, vandalism or force majeure

REPLACEMENT: Replacement product or equivalent shipped at ASSA ABLOY ESH's expense via next day air freight in most cases.

PRODUCTS COVERED:

- Electromagnetic Magnalocks and Specialty Locks
- Power Supplies (excluding BPSS) and Power Transfers
- Push Buttons, Keypads, Keyswitches and Egress Devices

SecuriCare 10-year Warranty

DURATION: Ten Years from date of shipment

CONDITION: Any reason including, but not limited to, installation error, vandalism or force majeure

REPLACEMENT: Replacement product or equivalent shipped at ASSA ABLOY ESH's expense via next day air freight in most cases.

PRODUCTS COVERED:

- Electric Strikes HES 1500, 1600
- When installed with a Smart PAC III the following electric strikes are upgraded to the 10 year warranty:
 - HES 1006, 4500, 5000, 5200, 7500, 8000, 8300, 8500, 9400, 9500, 9600, 9700
 - Folger Adam 310, 712, 732, 742
 - Integrated Wiegand Electric Strikes

SecuriCare 5-year Warranty

DURATION: Five Years from date of shipment

CONDITION: Any reason including, but not limited to, installation error, vandalism or force majeure

REPLACEMENT: Replacement product or equivalent shipped at ASSA ABLOY ESH's expense via next day air freight in most cases

PRODUCTS COVERED:

- HES 1006, 4500, 5000, 5200, 7500, 8000, 8300, 8500, 9400, 9500, 9600, 9700
- Folger Adam 310, 712, 732, 742
- Integrated Wiegand Electric Strikes
- Securitron MUNL, UNL

SecuriCare 3-year Warranty

DURATION: Three Years from date of shipment

CONDITION: Any reason, including but not limited to, installation error, vandalism or force majeure

REPLACEMENT: Replacement product or equivalent shipped at ASSA ABLOY ESH's expense via next day air freight in most cases

PRODUCTS COVERED:

- Aperio® Wireless Products AS100, K100, KS100, R100
- Cabinet Locks 610, 660, K20, KP20
- Integrated Wiegand Cabinet Locks K200, KS200
- BPSS Solar Power Supplies
- Accessories

Check your individual product to determine warranty coverage. Batteries and consumables are not covered by ASSA ABLOY ESH Warranty programs. Replacement products, at ASSA ABLOY ESH's sole option, may be the identical item or a unit which serves as a functional replacement. If the customer has an account with ASSA ABLOY ESH or a valid credit card, the customer may order an advance replacement product, whereby ASSA ABLOY ESH will charge the customer's account for the price of the product plus next day air freight, and will credit back to the customer the full amount of the charge, including outbound freight, upon ASSA ABLOY ESH's receipt of the original product from the customer. ASSA ABLOY ESH's sole and exclusive liability, and customer's sole remedy, is limited to the replacement of the ASSA ABLOY ESH product when delivered to ASSA ABLOY ESH's facility (freight and insurance charges prepaid by customer).

