

GENERAL LOCK®

Quality & Value


2013-2014 Catalog


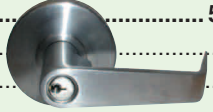



NOTES:

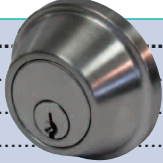
Lined writing area consisting of multiple horizontal lines for text entry.


Contents

Grade 1 Cylindrical Leversets		3-4
L100 Series Clutched Levers		3
L100 Series Clutched SFIC Levers		3
LX100 Series Rigid Levers		4
LX100 Series Rigid SFIC Levers.....		4
L100 Series Clutched Curved Levers.....		4
L100 Series Clutched Electrified Levers		4

Grade 2 Cylindrical Locksets		5-7
L200 Series Clutched Levers		5
L200 Series Clutched SFIC Levers.....		6
LX200 Series Rigid Levers.....		6
LX200 Series Rigid SFIC Levers.....		6
K200 Series Cylindrical Knobsets		7
K200 Series Cylindrical SFIC Knobsets		7

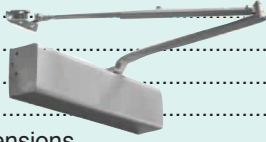
Grade 3 Cylindrical Knobsets		8
K300 Series Cylindrical Knobs		8


Deadlocks		10-11
D660 Series Grade 1.....		10
D160 Series Grade 2.....		10
D360 Series Grade 3.....		11


Grade 3 Tubular Knobsets		9
KT Series Tubular Knobs		9

Builders Hardware		18-20
Push, Pull & Kick Plates		18
Hole Filler Plates		18
Filler Plates.....		19
Scar Plates		19
Remodeling Wrap Plates.....		20

Cylinders, Cores, & Housings		12-17
SFIC Cores 6-Pin		12
SFIC Cores 7-Pin		12
Key-in-Lever / Knob Cylinders KLC1599.....		13
Mortise Cylinders.....		14
Rim Cylinders		15
Dummy Cylinders		15
Thumb Turns		16
Mortise Housings.....		16
Rim Housings		16
Key Blanks		17
Cams		17
Collars		17

Door Closers		23-25
Overhead Concealed		23
C9000 Series Surface		24
C7000 Series Surface		24
C5000 Series Surface		24
C3000 Series Sized.....		24
Door Closers Technical Dimensions.....		25

Exit Devices		21, 23
ED2300 Series		21
ED2300 Series Trims		21
ED1000 Series Narrow Stile.....		23

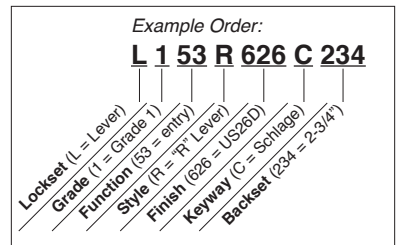
Padlocks		26-27
Brass Rekeyable		26
Brass Rekeyable Parts Listing		27

Storefront Hardware		22
----------------------------------	---	-----------

Components	28-33
Grade 1 Cylindrical Parts & Components.....	28
Grade 2 Cylindrical Parts & Components.....	29
Grade 3 Cylindrical Components	30
Grade 3 Tubular Components	30
Deadlock Parts & Components	31
Door Closer Components.....	32
C9000 Series.....	32
C7000 Series.....	32
C5000 Series.....	32
ED2300 Series Components.....	33
ED1000 Series Components.....	33

Finish Code Numbers:	35
Certifications:	35
Functions:	35

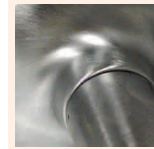
Grade 1 Cylindrical Leversets



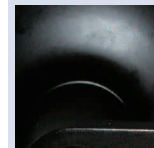
L100 Series Clutched Levers

PART#	Finish	Keyway	Backset	Function	ANSI	CLARK PART
L110R 626 234	US26D		2-3/4"	Passage	F75	cs 338536
L140R 626 234	US26D		2-3/4"	Privacy	F76	cs 338539
L153R 626 C 234	US26D	SCHL C	2-3/4"	Entry	F109	cs 338529
L170R-360 626 C 234	US26D	SCHL C	2-3/4"	Classroom	F84	cs 480946
L180R 626 C 234	US26D	SCHL C	2-3/4"	Storeroom	F86	cs 338542
L182R 626 C 234	US26D	SCHL C	2-3/4"	Asylum/ Institutional	F87	cs 415926
L195R-360 626 C 234	US26D	SCHL C	2-3/4"	Classroom Security	F110	cs 480948
L110R 613 234	US10B		2-3/4"	Passage	F75	cs 338535
L140R 613 234	US10B		2-3/4"	Privacy	F76	cs 338538
L153R 613 C 234	US10B	SCHL C	2-3/4"	Entry	F109	cs 338528
L170R 613 C 234	US10B	SCHL C	2-3/4"	Classroom	F84	cs 338511
L170R-360 613 C 234	US10B	SCHL C	2-3/4"	Classroom	F84	cs 480944
L180R 613 C 234	US10B	SCHL C	2-3/4"	Storeroom	F86	cs 338541
L110R 605 234	US3		2-3/4"	Passage	F75	cs 338534
L140R 605 234	US3		2-3/4"	Privacy	F76	cs 338537
L153R 605 C 234	US3	SCHL C	2-3/4"	Entry	F109	cs 338524
L170R-360 605 C 234	US3	SCHL C	2-3/4"	Classroom	F84	cs 338510
L180R 605 C 234	US3	SCHL C	2-3/4"	Storeroom	F86	cs 338540

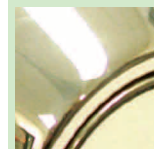
Finishes:



626
U.S. = US26D
Satin Chrome



613
U.S. = US10B
Dark Bronze, Oil Rubbed



605
U.S. = US3
Bright Brass

L100 Series Clutched SFIC Levers

(sold less core)

PART#	Finish	Keyway	Backset	Function	ANSI	CLARK PART
L153R 626 IC 234	US26D	SFIC	2-3/4"	Entry	F109	cs 338533
L170R-360 626 IC 234	US26D	SFIC	2-3/4"	Classroom	F84	cs 480947
L180R 626 IC 234	US26D	SFIC	2-3/4"	Storeroom	F86	cs 338545
L195R-360 626 IC 234	US26D	SFIC	2-3/4"	Classroom Security	F110	cs 501405
L153R 613 IC 234	US10B	SFIC	2-3/4"	Entry	F109	cs 338532
L170R-360 613 IC 234	US10B	SFIC	2-3/4"	Classroom	F84	cs 480945
L180R 613 IC 234	US10B	SFIC	2-3/4"	Storeroom	F86	cs 338544
L153R 605 IC 234	US3	SFIC	2-3/4"	Entry	F109	cs 338530
L170R-360 605 IC 234	US3	SFIC	2-3/4"	Classroom	F84	cs 495798
L180R 605 IC 234	US3	SFIC	2-3/4"	Storeroom	F86	cs 338543



L153R 626 C



L153R 613 C



L153R 605 C

Grade 1 Cylindrical Leversets

LX100 Series Rigid Levers

PART#	Finish	Keyway	Backset	Function	ANSI	CLARK PART
LX140R 626 234	US26D		2-3/4"	Privacy	F76	cs432741
LX153R 626 C 234	US26D	SCHL C	2-3/4"	Entry	F109	cs432743
LX170R 626 C 234	US26D	SCHL C	2-3/4"	Classroom	F84	cs432749
LX180R 626 C 234	US26D	SCHL C	2-3/4"	Storeroom	F86	cs432756
LX153R 613 C 234	US10B	SCHL C	2-3/4"	Entry	F109	cs432742
LX170R 613 C 234	US10B	SCHL C	2-3/4"	Classroom	F84	cs432747
LX180R 613 C 234	US10B	SCHL C	2-3/4"	Storeroom	F86	cs432754

LX100 Series Rigid SFIC Levers

(sold less core)

PART#	Finish	Keyway	Backset	Function	ANSI	CLARK PART
LX153R 626 IC 234	US26D	SFIC	2-3/4"	Entry	F109	cs432745
LX170R 626 IC 234	US26D	SFIC	2-3/4"	Classroom	F84	cs432752
LX180R 626 IC 234	US26D	SFIC	2-3/4"	Storeroom	F86	cs432757

L100 Series Clutched Curved Levers

PART#	Finish	Keyway	Backset	Function	ANSI	CLARK PART
L110C 626 234	US26D		2-3/4"	Passage	F75	cs440635
L140C 626 234	US26D		2-3/4"	Privacy	F76	cs440636
L153C 626 C 234	US26D	SCHL C	2-3/4"	Entry	F109	cs440637
L170C-360 626 C 234	US26D	SCHL C	2-3/4"	Classroom	F84	cs480943
L180C 626 C 234	US26D	SCHL C	2-3/4"	Storeroom	F86	cs440639

L100 Series Clutched Electrified Levers

PART#	Finish	Keyway	Backset	Function	CLARK PART
L180RE FSE 626 C 234	US26D	SCHL C	2-3/4"	Electrically Unlocked	cs418648
L180RE FSE 613 C 234	US10B	SCHL C	2-3/4"	Electrically Unlocked	cs418646
L180RE FSE 626 IC 234	US26D	SFIC	2-3/4"	Electrically Unlocked	cs418651
L180RE FSE 613 IC 234	US10B	SFIC	2-3/4"	Electrically Unlocked	cs418649

Parts & components found on page 28.



L153C 626 C

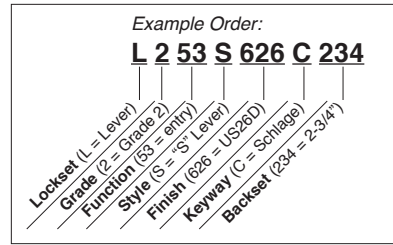


L180R 626 IC

Features:

- ANSI A156.2 Grade 1, UL Listed 3-hour
- 25 year mechanical warranty, 5 year finish warranty
- Solid brass cylinder, drilled 6, pinned 6
- Removable Thru-bolts (without using Thru-bolts the lock is not Grade 1 compliant)
- Thru-bolts are fixed (*electrified levers*)

Grade 2 Cylindrical Locksets

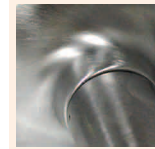


L200 Series Clutched Levers

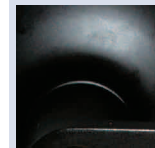
PART#	Finish	Keyway	Backset	Function	ANSI	CLARK PART
L210S 626 234	US26D		2-3/4"	Passage	F75	cs288614
L210S 626 LL	US26D		Less Latch	Passage	F75	cs303056
L240S 626 234	US26D		2-3/4"	Privacy	F76	cs288621
L240S 626 LL	US26D		Less Latch	Privacy	F76	cs303089
L253S 626 C 234	US26D	SCHL C	2-3/4"	Entry	F109	cs288604
L253S 626 C LL	US26D	SCHL C	Less Latch	Entry	F109	cs303002
L270S-360 626 C 234	US26D	SCHL C	2-3/4"	Classroom	F84	cs480965
L270S 626 C LL	US26D	SCHL C	Less Latch	Classroom	F84	cs428453
L270S-360 626 C LL	US26D	SCHL C	Less Latch	Classroom	F84	cs480966
L280S 626 C 234	US26D	SCHL C	2-3/4"	Storeroom	F86	cs288628
L280S 626 C LL	US26D	SCHL C	Less Latch	Storeroom	F86	cs303191
L2170S 626	US26D			Dummy		cs288597
L210S 613 LL	US10B		Less Latch	Passage	F75	cs303054
L240S 613 LL	US10B		Less Latch	Privacy	F76	cs303086
L253S 613 C 234	US10B	SCHL C	2-3/4"	Entry	F109	cs288603
L253S 613 C LL	US10B	SCHL C	Less Latch	Entry	F109	cs302999
L270S-360 613 C 234	US10B	SCHL C	2-3/4"	Classroom	F84	cs480964
L280S 613 C LL	US10B	SCHL C	Less Latch	Storeroom	F86	cs303189
L2170S 613	US10B			Dummy		cs288596
L210S 605 LL	US3		Less Latch	Passage	F75	cs303053
L240S 605 LL	US3		Less Latch	Privacy	F76	cs303083
L253S 605 C 234	US3	SCHL C	2-3/4"	Entry	F109	cs288602
L253S 605 C LL	US3	SCHL C	Less Latch	Entry	F109	cs302996
L270S-360 605 C 234	US3	SCHL C	2-3/4"	Classroom	F84	cs480962
L280S 605 C LL	US3	SCHL C	Less Latch	Storeroom	F86	cs303188
L2170S 605	US3			Dummy		cs288595

Parts & components found on page 29.

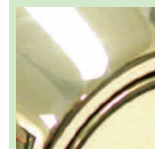
Finishes:



626
U.S. = US26D
Satin Chrome



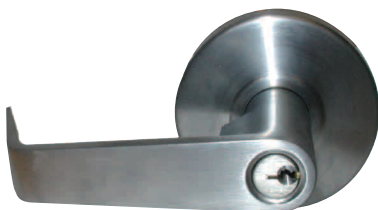
613
U.S. = US10B
Dark Bronze, Oil Rubbed



605
U.S. = US3
Bright Brass

Features:

- ANSI A156.2 Grade 2, UL Listed 3-hour
- 25 year mechanical warranty, 5 year finish warranty
- Solid brass cylinder, drilled 6, pinned 6
- Removable Thru-bolts (without using Thru-bolts the lock is not Grade 2 compliant)



L253S 626 C



L253S 613 C



L253S 605 C

Grade 2 Cylindrical Locksets

L200 Series Clutched SFIC Levers

(sold less core)

PART#	Finish	Keyway	Backset	Function	ANSI	CLARK PART
L253S 626 IC 234	US26D	SFIC	2-3/4"	Entry	F109	cs246339
L270S-360 626 IC 234	US26D	SFIC	2-3/4"	Classroom	F84	cs480967
L280S 626 IC 234	US26D	SFIC	2-3/4"	Storeroom	F86	cs246344
L253S 613 IC 234	US10B	SFIC	2-3/4"	Entry	F109	cs246338
L270S-360 613 IC 234	US10B	SFIC	2-3/4"	Classroom	F84	cs495797
L280S 613 IC 234	US10B	SFIC	2-3/4"	Storeroom	F86	cs246343
L253S 605 IC 234	US3	SFIC	2-3/4"	Entry	F109	cs343671
L270S-360 605 IC 234	US3	SFIC	2-3/4"	Classroom	F84	cs480963
L280S 605 IC 234	US3	SFIC	2-3/4"	Storeroom	F86	cs343674

LX200 Series Rigid Levers

PART#	Finish	Keyway	Backset	Function	ANSI	CLARK PART
LX253S 626 C 234	US26D	SCHL C	2-3/4"	Entry	F109	cs288607
LX253S 626 C LL	US26D	SCHL C	Less Latch	Entry	F109	cs303016
LX270S 626 C 234	US26D	SCHL C	2-3/4"	Classroom	F84	cs288594
LX270S 626 C LL	US26D	SCHL C	Less Latch	Classroom	F84	cs302972
LX280S 626 C 234	US26D	SCHL C	2-3/4"	Storeroom	F86	cs288631
LX280S 626 C LL	US26D	SCHL C	Less Latch	Storeroom	F86	cs303194
LX253S 613 C LL	US10B	SCHL C	Less Latch	Entry	F109	cs303007
LX270S 613 C LL	US10B	SCHL C	Less Latch	Classroom	F84	cs302969
LX280S 613 C LL	US10B	SCHL C	Less Latch	Storeroom	F86	cs303193
LX253S 605 C LL	US3	SCHL C	Less Latch	Entry	F109	cs303004
LX280S 605 C 234	US3	SCHL C	2-3/4"	Storeroom	F86	cs288629

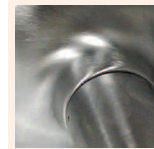
LX200 Series Rigid SFIC Levers

(sold less core)

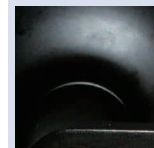
PART#	Finish	Keyway	Backset	Function	ANSI	CLARK PART
LX253S 626 IC 234	US26D	SFIC	2-3/4"	Entry	F109	cs243399
LX280S 626 IC 234	US26D	SFIC	2-3/4"	Storeroom	F86	cs246347
LX253S 613 IC 234	US10B	SFIC	2-3/4"	Entry	F109	cs243397
LX280S 613 IC 234	US10B	SFIC	2-3/4"	Storeroom	F86	cs246345

Parts & components found on page 29.

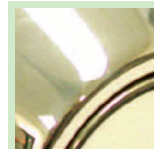
Finishes:



626
U.S. = US26D
Satin Chrome



613
U.S. = US10B
Dark Bronze, Oil Rubbed

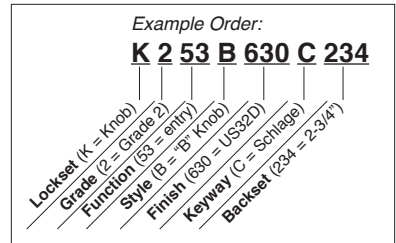


605
U.S. = US3
Bright Brass

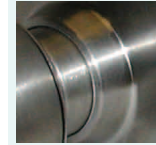
Grade 2 Cylindrical Knobsets

K200 Series Cylindrical Knobsets

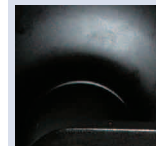
PART#	Finish	Keyway	Backset	Function	ANSI	CLARK PART
K210B 630 234	US32D		2-3/4"	Passage	F75	cs288286
K210B 630 LL	US32D		Less Latch	Passage	F75	cs303029
K240B 630 LL	US32D		Less Latch	Privacy	F76	cs303063
K253B 630 C 234	US32D	SCHL C	2-3/4"	Entry	F109	cs288278
K253B 630 C LL	US32D	SCHL C	Less Latch	Entry	F109	cs302988
K270B 630 C LL	US32D	SCHL C	Less Latch	Classroom	F84	cs302959
K280B 630 C 234	US32D	SCHL C	2-3/4"	Storeroom	F86	cs288303
K280B 630 C LL	US32D	SCHL C	Less Latch	Storeroom	F86	cs303177
K210B 613 LL	US10B		Less Latch	Passage	F75	cs303019
K240B 613 LL	US10B		Less Latch	Privacy	F76	cs303059
K253B 613 C LL	US10B	SCHL C	Less Latch	Entry	F109	cs302987
K270B 613 C LL	US10B	SCHL C	Less Latch	Classroom	F84	cs302957
K280B 613 C LL	US10B	SCHL C	Less Latch	Storeroom	F86	cs303176
K210B 605 LL	US3		Less Latch	Passage	F75	cs303018
K240B 605 LL	US3		Less Latch	Privacy	F76	cs303057
K253B 605 C LL	US3	SCHL C	Less Latch	Entry	F109	cs302982
K280B 605 C LL	US3	SCHL C	Less Latch	Storeroom	F86	cs303175
K210P 605 LL	US3		Less Latch	Passage	F75	cs303030
K210P 605 234	US3		2-3/4"	Passage	F75	cs288287
K240P 605 LL	US3		Less Latch	Privacy	F76	cs303065
K253P 605 C 234	US3	SCHL C	2-3/4"	Entry	F109	cs288279
K253P 605 C LL 5P KA4	US3	SCHL C	Less Latch	Entry	F109	cs302989
K270P 605 C LL 5P KA4	US3	SCHL C	Less Latch	Classroom	F84	cs477957
K280P 605 C LL 5P KA4	US3	SCHL C	Less Latch	Storeroom	F86	cs477960



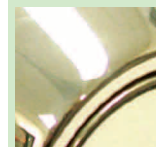
Finishes:



630
U.S. = US32D
Satin Stainless Steel



613
U.S. = US10B
Dark Bronze, Oil Rubbed



605
U.S. = US3
Bright Brass



K253B 630 C



K253B 613 C



K253B 605 C



K253P 605 C

K200 Series Cylindrical SFIC Knobsets

(sold less core)

PART#	Finish	Keyway	Backset	Function	ANSI	CLARK PART
K253B 630 IC 234	US32D	SFIC	2-3/4"	Entry	F109	cs411210
K280B 630 IC 234	US32D	SFIC	2-3/4"	Storeroom	F86	cs411209
K253B 605 IC 234	US3	SFIC	2-3/4"	Entry	F109	cs442388

Features:

- ANSI A156.2 Grade 2, UL Listed 3-hour
- 25 year mechanical warranty, 5 year finish warranty
- Solid brass cylinder, drilled 6, pinned 6
- KA4 is drilled 6, pinned 5



Grade 3 Cylindrical Knobsets

K300 Series Cylindrical Knobs

PART#	Finish	Keyway	Backset	Function	ANSI	CLARK PART
K310B 630 ADJ	US32D		2-way adj.	Passage	F75	cs288610
K340B 630 ADJ	US32D		2-way adj.	Privacy	F76	cs288617
K353B 630 C ADJ	US32D	SCHL C	2-way adj.	Entry	F109	cs288600
K380B 630 C ADJ	US32D	SCHL C	2-way adj.	Storeroom	F86	cs288624
K310B 609 ADJ	US5		2-way adj.	Passage	F75	cs288609
K340B 609 ADJ	US5		2-way adj.	Privacy	F76	cs288616
K353B 609 C ADJ	US5	SCHL C	2-way adj.	Entry	F109	cs288599
K380B 609 C ADJ	US5	SCHL C	2-way adj.	Storeroom	F86	cs288623
K310B 605 ADJ	US3		2-way adj.	Passage	F75	cs288608
K340B 605 ADJ	US3		2-way adj.	Privacy	F76	cs288615
K353B 605 C ADJ	US3	SCHL C	2-way adj.	Entry	F109	cs288598
K380B 605 C ADJ	US3	SCHL C	2-way adj.	Storeroom	F86	cs288622

Parts & components found on page 30.



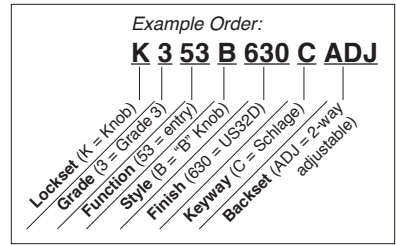
K353B 630 C



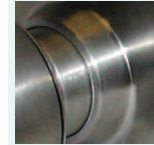
K353B 609 C



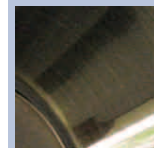
K353B 605 C



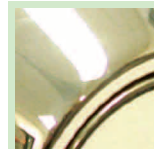
Finishes:



630
U.S. = US32D
Satin Stainless Steel



609
U.S. = US5
Antique Brass

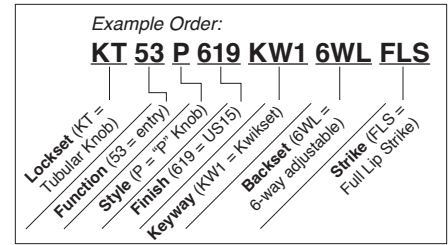


605
U.S. = US3
Bright Brass

Features:

- ANSI A156.2 Grade 3, UL Listed, 30 min. fire rated
- 25 year mechanical warranty, 5 year finish warranty
- Solid brass cylinder, drilled 5, pinned 5

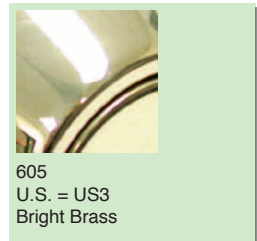
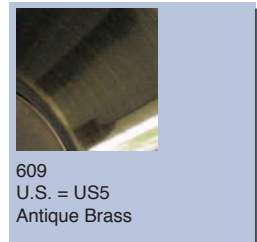
Grade 3 Tubular Knobsets



KT Series Tubular Knobs

PART#	Finish	Keyway	Backset	Function	ANSI	CLARK PART
KT170T 619	US15			Dummy		cs464782
KT10T 619 6WL FLS	US15		6-way adj.	Passage	F75	cs464780
KT40T 619 6WL FLS	US15		6-way adj.	Privacy	F76	cs464783
KT53T 619 KW1 6WL FLS	US15	Kwikset	6-way adj.	Entry	F109	cs464785
KT170P 619	US15			Dummy		cs454208
KT10P 619 6WL FLS	US15		6-way adj.	Passage	F75	cs454206
KT40P 619 6WL FLS	US15		6-way adj.	Privacy	F76	cs454209
KT53P 619 KW1 6WL FLS	US15	Kwikset	6-way adj.	Entry	F109	cs454211
KT170T 609	US5			Dummy		cs316772
KT10T 609 6WL FLS	US5		6-way adj.	Passage	F75	cs346343
KT40T 609 6WL FLS	US5		6-way adj.	Privacy	F76	cs346402
KT53T 609 KW1 6WL FLS	US5	Kwikset	6-way adj.	Entry	F109	cs425491
KT170P 609	US5			Dummy		cs316770
KT10P 609 6WL FLS	US5		6-way adj.	Passage	F75	cs346338
KT40P 609 6WL FLS	US5		6-way adj.	Privacy	F76	cs346399
KT53P 609 KW1 6WL FLS	US5	Kwikset	6-way adj.	Entry	F109	cs425477
KT170T 605	US3			Dummy		cs316771
KT10T 605 6WL FLS	US3		6-way adj.	Passage	F75	cs346341
KT40T 605 6WL FLS	US3		6-way adj.	Privacy	F76	cs346401
KT53T 605 KW1 6WL FLS	US3	Kwikset	6-way adj.	Entry	F109	cs425489
KT170P 605	US3			Dummy		cs316769
KT10P 605 6WL FLS	US3		6-way adj.	Passage	F75	cs346337
KT40P 605 6WL FLS	US3		6-way adj.	Privacy	F76	cs346398
KT53P 605 KW1 6WL FLS	US3	Kwikset	6-way adj.	Entry	F109	cs425476

Finishes:



Parts & components found on page 30.



KT53P 619



KT53P 609



KT53P 605



KT53T 619



KT53T 609



KT53T 605

Deadlocks

D660 Series Grade 1

(SFIC sold less core)



D660 626



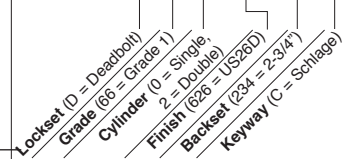
D660 613



D660 605

Example Order:

D 66 0 626 234 C



Single Cyl.

PART#	Finish	Keyway	Backset	Function	CLARK PART
D660 626 234 C	US26D	SCHL C	2-3/4"	Single	cs359455
D660 626 234 IC	US26D	SFIC	2-3/4"	Single	cs359456
D660 613 234 C	US10B	SCHL C	2-3/4"	Single	cs359453
D660 613 234 IC	US10B	SFIC	2-3/4"	Single	cs359454
D660 605 234 C	US3	SCHL C	2-3/4"	Single	cs359451
D660 605 234 IC	US3	SFIC	2-3/4"	Single	cs359452

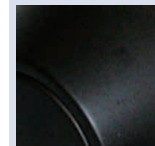
Double Cyl.

D662 626 234 C	US26D	SCHL C	2-3/4"	Double	cs359446
D662 626 234 IC	US26D	SFIC	2-3/4"	Double	cs359447
D662 613 234 C	US10B	SCHL C	2-3/4"	Double	cs359444
D662 613 234 IC	US10B	SFIC	2-3/4"	Double	cs359445
D662 605 234 C	US3	SCHL C	2-3/4"	Double	cs359440
D662 605 234 IC	US3	SFIC	2-3/4"	Double	cs359442

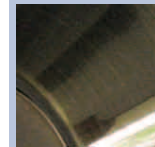
Finishes:



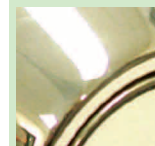
626
U.S. = US26D
Satin Chrome



613
U.S. = US10B
Dark Bronze, Oil Rubbed



609
U.S. = US5
Antique Brass



605
U.S. = US3
Bright Brass

D160 Series Grade 2

(SFIC sold less core)



D160 626



D160 613



D160 605

Single Cyl.

PART#	Finish	Keyway	Backset	Function	CLARK PART
D160 626 6WL C	US26D	SCHL C	6-way adj.	Single	cs257039
D160 626 6WL IC	US26D	SFIC	6-way adj.	Single	cs359450
D160 613 6WL C	US10B	SCHL C	6-way adj.	Single	cs257038
D160 613 6WL IC	US10B	SCHL C	6-way adj.	Single	cs359449
D160 609 6WL C	US5	SCHL C	6-way adj.	Single	cs473505
D160 605 6WL C	US3	SCHL C	6-way adj.	Single	cs257037
D160 605 6WL C 5P KA4	US3	SCHL C, 5-pin, Keyed- Alike 4	6-way adj.	Single	cs477954
D160 605 6WL IC	US3	SFIC	6-way adj.	Single	cs359448

Double Cyl.

D162 626 6WL C	US26D	SCHL C	6-way adj.	Double	cs257033
D162 626 6WL IC	US26D	SCHL C	6-way adj.	Double	cs359439
D162 613 6WL C	US10B	SCHL C	6-way adj.	Double	cs257032
D162 613 6WL IC	US10B	SCHL C	6-way adj.	Double	cs359438
D162 609 6WL C	US5	SCHL C	6-way adj.	Double	cs485779
D162 605 6WL C	US3	SCHL C	6-way adj.	Double	cs257031
D162 605 6WL C 5P KA4	US3	SCHL C, 5-pin, Keyed- Alike 4	6-way adj.	Double	cs477956
D162 605 6WL IC	US3	SFIC	6-way adj.	Double	cs359437

Features:

- ANSI A156.2 Grade 2 (D160), Grade 1 (D660), UL Listed 3-hour
- 25 year mechanical warranty, 5 year finish warranty
- Solid brass cylinder, drilled 6, pinned 6 unless noted

Door thickness chart on page 11.

Deadlocks

D360 Series Grade 3

Single Cyl.

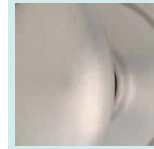
PART#	Finish	Keyway	Backset	Function	CLARK PART
D360 619 KW1 ADJ S	US15	Kwikset	2-way adj.	Single	cs446766
D360 619 C ADJ S	US15	SCHL C	2-way adj.	Single	cs425439
D360 609 KW1 ADJ S	US5	Kwikset	2-way adj.	Single	cs425436
D360 609 C ADJ S	US5	SCHL C	2-way adj.	Single	cs454191
D360 605 KW1 ADJ S	US3	Kwikset	2-way adj.	Single	cs425427
D360 605 C ADJ S	US3	SCHL C	2-way adj.	Single	cs425424

Double Cyl.

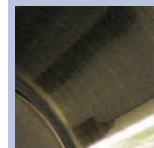
D362 619 KW1 ADJ S	US15	Kwikset	2-way adj.	Double	cs454194
D362 619 C ADJ S	US15	SCHL C	2-way adj.	Double	cs425445
D362 609 KW1 ADJ S	US5	Kwikset	2-way adj.	Double	cs425443
D362 609 C ADJ S	US5	SCHL C	2-way adj.	Double	cs454193
D362 605 KW1 ADJ S	US3	Kwikset	2-way adj.	Double	cs425442
D362 605 C ADJ S	US3	SCHL C	2-way adj.	Double	cs425441

Parts & components found on page 31.

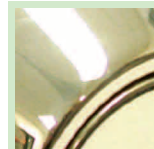
Finishes:



619
U.S. = US15
Satin Nickel



609
U.S. = US5
Antique Brass



605
U.S. = US3
Bright Brass

Door Thickness

Series	Inches
D660 C	1-9/16" to 2"
D662 C	1-9/16" to 2"
D660 IC	1-9/16" to 2"
D662 IC	1-9/16" to 2"
D160 C	1-3/8" to 1-3/4"
D162 C	1-3/8" to 1-3/4"
D160 IC	1-9/16" to 2"
D162 IC	1-9/16" to 2"
D360 C	1-3/8" to 1-3/4"
D360 KW1	1-3/8" to 1-3/4"



D360 619



D360 609



D360 605

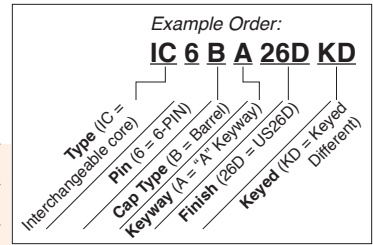
Cylinders, Cores, & Housings

SFIC Cores 6-Pin

PART#	Pin	Keyway	Finish	Keying	CLARK PART
IC6B A 26D	6-pin	A KWY	US26D	uncombined	cs275719
IC6B B 26D	6-pin	B KWY	US26D	uncombined	cs275723
IC6B C 26D	6-pin	C KWY	US26D	uncombined	cs275726
IC6B D 26D	6-pin	D KWY	US26D	uncombined	cs275734
IC6B E 26D	6-pin	E KWY	US26D	uncombined	cs275747
IC6B F 26D	6-pin	F KWY	US26D	uncombined	cs275749
IC6B G 26D	6-pin	G KWY	US26D	uncombined	cs275754
IC6B H 26D	6-pin	H KWY	US26D	uncombined	cs275757
IC6B J 26D	6-pin	J KWY	US26D	uncombined	cs275759
IC6B K 26D	6-pin	K KWY	US26D	uncombined	cs275766
IC6B L 26D	6-pin	L KWY	US26D	uncombined	cs275771
IC6B M 26D	6-pin	M KWY	US26D	uncombined	cs275775
IC6B Q 26D	6-pin	Q KWY	US26D	uncombined	cs275777
IC6B G 26D KD	6-pin	G KWY	US26D	combined KD	cs477209
IC6B G 26D KA	6-pin	G KWY	US26D	combined KA2	cs477208
IC6B A 4	6-pin	A KWY	US4	uncombined	cs275718
IC6B B 4	6-pin	B KWY	US4	uncombined	cs275721
IC6B C 4	6-pin	C KWY	US4	uncombined	cs275725
IC6B D 4	6-pin	D KWY	US4	uncombined	cs275731
IC6B E 4	6-pin	E KWY	US4	uncombined	cs275745
IC6B F 4	6-pin	F KWY	US4	uncombined	cs275748
IC6B G 4	6-pin	G KWY	US4	uncombined	cs275753
IC6B J 4	6-pin	J KWY	US4	uncombined	cs275758
IC6B K 4	6-pin	K KWY	US4	uncombined	cs275763
IC6B L 4	6-pin	L KWY	US4	uncombined	cs275769
IC6B M 4	6-pin	M KWY	US4	uncombined	cs275773
IC6B Q 4	6-pin	Q KWY	US4	uncombined	cs275776
1A1G1 CUT TO 434750 CONTROL	Control Key for KD core (DND, 2 keys)				cs477968
1A1G1 CUT TO 452510 CONTROL	Control Key for KA core (DND, 2 keys)				cs477967

SFIC Cores 7-Pin

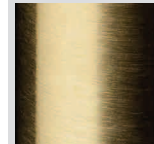
IC7B A 26D	7-pin	A KWY	US26D		cs275778
IC7B B 26D	7-pin	B KWY	US26D		cs275779
IC7B C 26D	7-pin	C KWY	US26D		cs275780
IC7B D 26D	7-pin	D KWY	US26D		cs275781
IC7B E 26D	7-pin	E KWY	US26D		cs275783
IC7B F 26D	7-pin	F KWY	US26D		cs275784
IC7B G 26D	7-pin	G KWY	US26D		cs275785
IC7B H 26D	7-pin	H KWY	US26D		cs275786
IC7B J 26D	7-pin	J KWY	US26D		cs275787
IC7B K 26D	7-pin	K KWY	US26D		cs275788
IC7B L 26D	7-pin	L KWY	US26D		cs275789
IC7B M 26D	7-pin	M KWY	US26D		cs275790
IC7B Q 26D	7-pin	Q KWY	US26D		cs275791



Finishes:



626
U.S. = US26D
Satin Chrome



606
U.S. = US4
Satin Brass

Features:

- Solid brass construction
- Cap style



6-PIN 26D



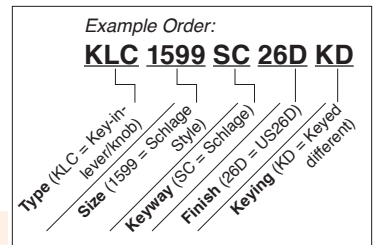
7-PIN 26D

Cylinders, Cores, & Housings

Key-in-Lever / Knob Cylinders KLC1599

PART#	Size	Keyway	Finish	Keying	CLARK PART
KLC1599 AA 26D KD	6-pin	ARROW	US26D	KD	cs256570
KLC1599 AA 26D OB	6-pin	ARROW	US26D	OB	cs256571
KLC1599 CA 26D KD	6-pin	CORB 60	US26D	KD	cs256574
KLC1599 CA 26D OB	6-pin	CORB 60	US26D	OB	cs256576
KLC1599 GA 26D KD	6-pin	SARG LA	US26D	KD	cs256578
KLC1599 GA 26D OB	6-pin	SARG LA	US26D	OB	cs483431
KLC1599 KS 26D KD	6-pin	Kwikset	US26D	KD	cs256580
KLC1599 KS 26D OB	6-pin	Kwikset	US26D	OB	cs256581
KLC1599 RB 26D KD	6-pin	RUSS D1	US26D	KD	cs256583
KLC1599 RB 26D OB	6-pin	RUSS D1	US26D	OB	cs256584
KLC1599 SC 26D ABPR*	6-pin	SCHL C	US26D	OB	cs437330
KLC1599 SC 26D KD	6-pin	SCHL C	US26D	KD	cs256586
KLC1599 SC 26D OB	6-pin	SCHL C	US26D	OB	cs256588
KLC1599 SE 26D KD	6-pin	SCHL E	US26D	KD	cs256592
KLC1599 SE 26D OB	6-pin	SCHL E	US26D	OB	cs256595
KLC1599 SX 26D KD	6-pin	SCHL C-K	US26D	KD	cs256597
KLC1599 SX 26D OB	6-pin	SCHL C-K	US26D	OB	cs256598
KLC1599 WA 26D KD	6-pin	WEISER	US26D	KD	cs256601
KLC1599 WA 26D OB	6-pin	WEISER	US26D	OB	cs256602
KLC1599 YA 26D KD	6-pin	YALE 8	US26D	KD	cs256605
KLC1599 YA 26D OB	6-pin	YALE 8	US26D	OB	cs256606
KLC1599 AA 4 OB	6-pin	ARROW	US4	OB	cs256568
KLC1599 CA 4 OB	6-pin	CORB 60	US4	OB	cs256573
KLC1599 KS 4 OB	6-pin	Kwikset	US4	OB	cs256579
KLC1599 RB 4 OB	6-pin	RUSS D1	US4	OB	cs256582
KLC1599 SC 4 OB	6-pin	SCHL C	US4	OB	cs256585
KLC1599 SE 4 OB	6-pin	SCHL E	US4	OB	cs256590
KLC1599 SX 4 OB	6-pin	SCHL C-K	US4	OB	cs256596
KLC1599 WA 4 OB	6-pin	WEISER	US4	OB	cs256600
KLC1599 YA 4 OB	6-pin	YALE 8	US4	OB	cs256604

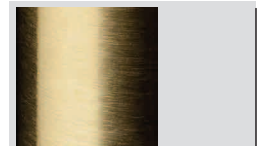
* bump resistant



Finishes:



626
U.S. = US26D
Satin Chrome



606
U.S. = US4
Satin Brass

Features:

- Solid brass construction
- 5 tailpieces
- Drilled 6, Pinned 5



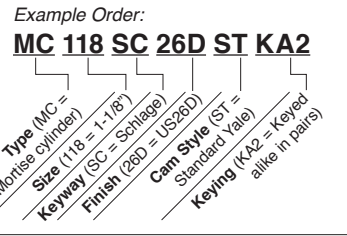
KLC1599 26D

Cylinders, Cores, & Housings

Mortise Cylinders

PART#	Size	Keyway	Finish	Cam	Keying	CLARK PART
MC100 AA 26D AR KA2	1"	ARROW	US26D	Adams Rite	KA2	cs256628
MC100 KS 26D AR KA2	1"	Kwikset	US26D	Adams Rite	KA2	cs256636
MC100 SC 26D AR KA2	1"	SCHL C	US26D	Adams Rite	KA2	cs256640
MC100 SX 26D AR KA2	1"	SCHL C-K	US26D	Adams Rite	KA2	cs256644
MC100 WA 26D AR KA2	1"	WEISER	US26D	Adams Rite	KA2	cs256646
MC100 YA 26D AR KA2	1"	YALE 8	US26D	Adams Rite	KA2	cs256649
MC118 60 26D ST KA2	1-1/8"	CORB 60	US26D	Yale St / AR	KA2	cs428250
MC118 AA 26D ST KA2	1-1/8"	ARROW	US26D	Yale St / AR	KA2	cs256692
MC118 GA 26D ST KA2	1-1/8"	SARG LA	US26D	Yale St / AR	KA2	cs256694
MC118 KS 26D ST KA2	1-1/8"	Kwikset	US26D	Yale St / AR	KA2	cs256697
MC118 RB 26D ST KA2	1-1/8"	RUSS D1	US26D	Yale St / AR	KA2	cs256703
MC118 SC 26D ST KA2	1-1/8"	SCHL C	US26D	Yale St / AR	KA2	cs256707
MC118 SC 26D ST KA2 ABPR*	1-1/8"	SCHL C	US26D	Yale St / AR	KA2	cs437331
MC118 SE 26D ST KA2	1-1/8"	SCHL E	US26D	Yale St / AR	KA2	cs256709
MC118 SX 26D ST KA2	1-1/8"	SCHL C-K	US26D	Yale St / AR	KA2	cs256716
MC118 WA 26D ST KA2	1-1/8"	WEISER	US26D	Yale St / AR	KA2	cs256717
MC118 YA 26D ST KA2	1-1/8"	YALE 8	US26D	Yale St / AR	KA2	cs256720
MC114 SC 26D ST KA2	1-1/4"	SCHL C	US26D	Yale standard	KA2	cs256742
MC114 SX 26D ST KA2	1-1/4"	SCHL C-K	US26D	Yale standard	KA2	cs256750
MC100 KS 10B AR KA2	1"	Kwikset	US10B	Adams Rite	KA2	cs256631
MC100 SC 10B AR KA2	1"	SCHL C	US10B	Adams Rite	KA2	cs256639
MC100 SX 10B AR KA2	1"	SCHL C-K	US10B	Adams Rite	KA2	cs256642
MC100 YA 10B AR KA2	1"	YALE 8	US10B	Adams Rite	KA2	cs256648
MC118 GA 10B ST KA2	1-1/8"	SARG LA	US10B	Yale St / AR	KA2	cs256693
MC118 KS 10B ST KA2	1-1/8"	Kwikset	US10B	Yale St / AR	KA2	cs256696
MC118 RB 10B ST KA2	1-1/8"	RUSS D1	US10B	Yale St / AR	KA2	cs256701
MC118 SC 10B ST KA2	1-1/8"	SCHL C	US10B	Yale St / AR	KA2	cs256706
MC118 SE 10B ST KA2	1-1/8"	SCHL E	US10B	Yale St / AR	KA2	cs256708
MC118 SX 10B ST KA2	1-1/8"	SCHL C-K	US10B	Yale St / AR	KA2	cs256712
MC114 SC 10B ST KA2	1-1/4"	SCHL C	US10B	Yale standard	KA2	cs256740
MC100 KS 3 AR KA2	1"	Kwikset	US3	Adams Rite	KA2	cs256630
MC100 SC 3 AR KA2	1"	SCHL C	US3	Adams Rite	KA2	cs256638
MC100 YA 3 AR KA2	1"	YALE 8	US3	Adams Rite	KA2	cs256647
MC118 GA 3 ST KA2	1-1/8"	SARG LA	US3	Yale St / AR	KA2	cs286172
MC118 KS 3 ST KA2	1-1/8"	Kwikset	US3	Yale St / AR	KA2	cs256695
MC118 RB 3 ST KA2	1-1/8"	RUSS D1	US3	Yale St / AR	KA2	cs256699
MC118 SC 3 ST KA2	1-1/8"	SCHL C	US3	Yale St / AR	KA2	cs256705
MC118 SX 3 ST KA2	1-1/8"	SCHL C-K	US3	Yale St / AR	KA2	cs256711
MC118 YA 3 ST KA2	1-1/8"	YALE 8	US3	Yale St / AR	KA2	cs256719
MC114 SC 3 ST KA2	1-1/4"	SCHL C	US3	Yale standard	KA2	cs256738
MC114 SX 3 ST KA2	1-1/4"	SCHL C-K	US3	Yale standard	KA2	cs256744

* bump resistant



Finishes:



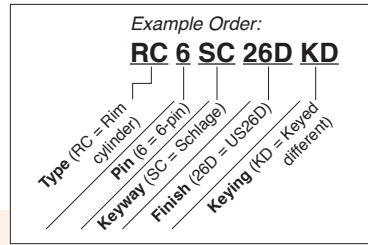
Features:

- Solid brass construction
- 1" is drilled 5, pinned 5
- 1-1/8" and 1-1/4" cylinders are drilled 6, pinned 5

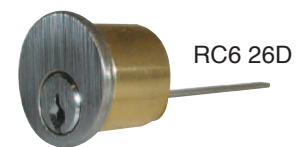
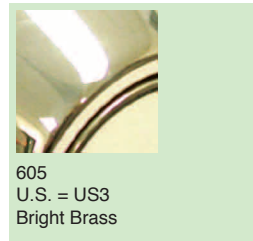
Cylinders, Cores, & Housings

Rim Cylinders

PART#	Pin	Keyway	Finish	Keying	CLARK PART
RC6 AA 26D KA2	6-pin	ARROW	US26D	KA2	cs256763
RC6 AA 26D KD	6-pin	ARROW	US26D	KD	cs256768
RC6 GA 26D KD	6-pin	SARG LA	US26D	KD	cs256769
RC6 KS 26D KA2	6-pin	Kwikset	US26D	KA2	cs256779
RC6 KS 26D KD	6-pin	Kwikset	US26D	KD	cs256781
RC6 RB 26D KA2	6-pin	RUSS D1	US26D	KA2	cs256784
RC6 RB 26D KD	6-pin	RUSS D1	US26D	KD	cs256786
RC6 SC 26D KD	6-pin	SCHL C	US26D	KD	cs256794
RC6 SC 26D KA2	6-pin	SCHL C	US26D	KA2	cs256793
RC6 SE 26D KA2	6-pin	SCHL E	US26D	KA2	cs256796
RC6 SX 26D KA2	6-pin	SCHL C-K	US26D	KA2	cs256799
RC6 SX 26D KD	6-pin	SCHL C-K	US26D	KD	cs256800
RC6 WA 26D KA2	6-pin	WEISER	US26D	KA2	cs256803
RC6 YA 26D KA2	6-pin	YALE 8	US26D	KA2	cs256808
RC6 YA 26D KD	6-pin rim	YALE 8	US26D	KD	cs256810
RC6 KS 10B KD	6-pin	Kwikset	US10B	KD	cs256778
RC6 SC 10B KA2	6-pin	SCHL C	US10B	KA2	cs256790
RC6 SC 10B KD	6-pin	SCHL C	US10B	KD	cs256792
RC6 YA 10B KD	6-pin	YALE 8	US10B	KD	cs256807
RC6 AA 3 KA2	6-pin	ARROW	US3	KA2	cs256758
RC6 KS 3 KA2	6-pin	Kwikset	US3	KA2	cs256771
RC6 KS 3 KD	6-pin	Kwikset	US3	KD	cs256774
RC6 SC 3 KA2	6-pin	SCHL C	US3	KA2	cs256788
RC6 SC 3 KD	6-pin	SCHL C	US3	KD	cs256789
RC6 SX 3 KD	6-pin	SCHL C-K	US3	KD	cs256797
RC6 YA 3 KA2	6-pin rim	YALE 8	US3	KA2	cs256804
RC6 YA 3 KD	6-pin rim	YALE 8	US3	KD	cs256805



Finishes:



Dummy Cylinders

PART #	Size	Type	Finish	CLARK PART
MC100DC 26D	1"	Mortise	US26D	cs256611
MC118DC 26D	1-1/8"	Mortise	US26D	cs256614
MC100DC 10B	1"	Mortise	US10B	cs256610
MC118DC 10B	1-1/8"	Mortise	US10B	cs256613
MC100DC 3	1"	Mortise	US3	cs256609
MC118DC 3	1-1/8"	Mortise	US3	cs256612
RCDC 26D		Rim	US26D	cs287326



MC100DC 26D



MC100DC 10B



MC100DC 3

Features:

- Solid brass construction
- Rim cylinders are drilled 6, pinned 5

Cylinders, Cores, & Housings

Thumb Turns

PART #	Size	Finish	Cam	CLARK PART
MC100TT 26D AR	1"	US26D	Adams Rite	cs256817
MC114TT 26D ST	1-1/4"	US26D	Yale	cs256824
MC118TT 26D ST	1-1/8"	US26D	Yale	cs256821
MC100TT 10B AR	1"	US10B	Adams Rite	cs256816
MC118TT 10B ST	1-1/8"	US10B	Yale	cs256819
MC100TT 3 AR	1"	US3	Adams Rite	cs256815
MC114TT 3 ST	1-1/4"	US3	Yale	cs256823
MC118TT 3 ST	1-1/8"	US3	Yale	cs256818

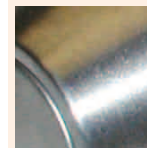
Mortise Housings

PART #	Pin	Finish	Cam	CLARK PART	
MC-IC6-AR 26D	6-pin	US26D	Adams Rite	cs256548	
MC-IC6-CL 26D	6-pin	US26D	Corbin	cs256549	
MC-IC6-SL 26D	6-pin	US26D	Schlage	cs465474	
MC-IC6-ST 26D	6-pin	US26D	Standard	cs256550	
MC-IC7-AR 26D	7-pin	US26D	Adams Rite	cs256552	
MC-IC7-CL 26D	7-pin	US26D	Corbin	cs256553	
MC-IC7-SA 26D	7-pin	US26D	Sargent	cs256554	
MC-IC7-SL 26D	7-pin	US26D	Schlage	cs256555	
MC-IC7-ST 26D	7-pin	US26D	Standard	cs256557	
MCT-IC6-AR 26D	6-pin	Tapered	US26D	Adams Rite	cs256558
MCT-IC7-AR 26D	7-pin	Tapered	US26D	Adams Rite	cs256560
MC-IC6-AR 10B	6-pin	US10B	Adams Rite	cs256547	
MC-IC6-SL 10B	6-pin	US10B	Schlage	cs465477	
MC-IC7-AR 10B	7-pin	US10B	Adams Rite	cs256551	
MC-IC7-SL 10B	7-pin	US10B	Schlage	cs463694	
MC-IC7-ST 10B	7-pin	US10B	Standard	cs256556	
MCT-IC7-AR 10B	7-pin	Tapered	US10B	Adams Rite	cs256559
MC-IC7-SL 3	7-pin	US3	Schlage	cs463692	
MC-IC7-ST 3	7-pin	US3	Standard	cs463696	

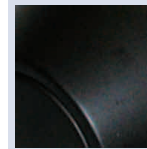
Rim Housings

PART #	Pin	Type	Finish	Tailpiece Style	CLARK PART
RC-IC6 26D	6-pin	Rim	US26D	Rigid	cs256561
RC-IC7 26D	7-pin	Rim	US26D	Rigid	cs256564
RC-IC7-LZ 26D	7-pin	Rim	US26D	Lazy Motion	cs435390
RC-IC7 10B	7-pin	Rim	US10B	Rigid	cs256563
RC-IC7 3	7-pin	Rim	US3	Rigid	cs256562

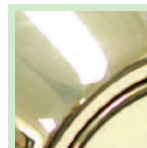
Finishes:



626
U.S. = US26D
Satin Chrome



613
U.S. = US10B
Dark Bronze, Oil Rubbed



605
U.S. = US3
Bright Brass



MC100TT 26D



MC-IC 26D



MCT-IC 26D

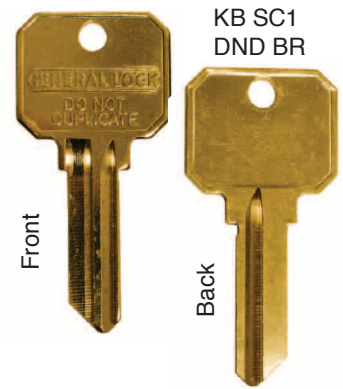


RC-IC 26D


Cylinders, Cores, & Housings

Key Blanks

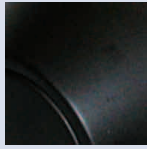
PART#	Description	CLARK PART
KB AR1 DND BR	Arrow, DO NOT DUP, Neuter Bow, Brass	cs 459470
KB CO87 DND BR	Corbin 60 5-PIN, DO NOT DUP, Neuter Bow, Brass	cs 459471
KB CO88 DND BR	Corbin 60 6-pin, DO NOT DUP, Neuter Bow, Brass	cs 459472
KB KW1 DND BR	Kwikset, DO NOT DUP, Neuter Bow, Brass	cs 459474
KB RU45 DND BR	Russ D1 5-PIN, DO NOT DUP, Neuter Bow, Brass	cs 459475
KB RU46 DND BR	Russ D1 6-pin, DO NOT DUP, Neuter Bow, Brass	cs 459476
KB S22 DND BR	Sargent LA 6-pin, DO NOT DUP, Neuter Bow, Brass	cs 459473
KB SC1 DND BR	Schlage C 5-PIN, DO NOT DUP, Neuter Bow, Brass	cs 459477
KB SC4 DND BR	Schlage C 6-pin, DO NOT DUP, Neuter Bow, Brass	cs 459478
KB SC9 DND BR	Schlage E 6-pin, DO NOT DUP, Neuter Bow, Brass	cs 459479
KB WR5 DND BR	Weiser 1555, DO NOT DUP, Neuter Bow, Brass	cs 459480
KB Y1 DND BR	Yale 8, DO NOT DUP, Neuter Bow, Brass	cs 459481



Finishes:



626
U.S. = US26D
Satin Chrome



613
U.S. = US10B
Dark Bronze, Oil Rubbed



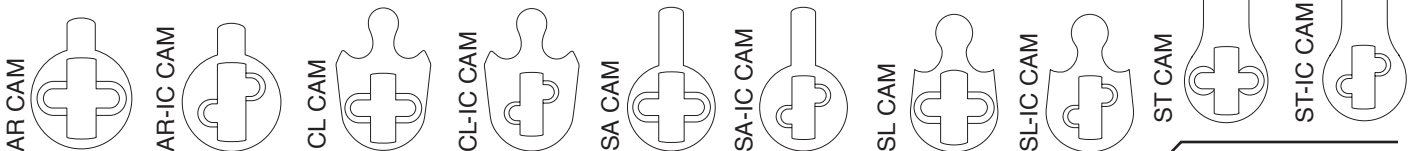
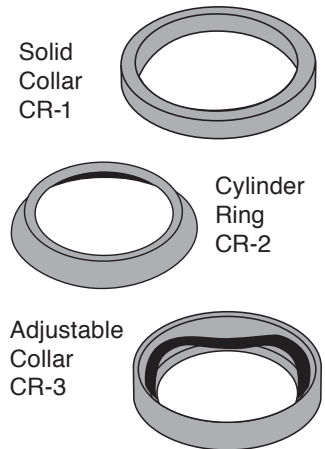
605
U.S. = US3
Bright Brass

Cams

AR CAM	Adams Rite CAM for STD Mortise Cylinder	cs 269979
AR-IC CAM	Adams Rite CAM for IC Mortise Housing	cs 269980
CL CAM	Cloverleaf CAM for STD Mortise Cylinder	cs 269981
CL-IC CAM	Cloverleaf CAM for IC Mortise Housing	cs 269982
IC-SP1	Spacer for I/C Cylinder Shell	cs 321778
SA CAM	Sargent CAM for STD Mortise Cylinder	cs 269984
SA-IC CAM	Sargent CAM for IC Mortise Housing	cs 269986
SL CAM	Schlage "L" CAM for STD Mortise Cylinder	cs 269988
SL-IC CAM	Schlage "L" CAM for IC Mortise Housing	cs 269989
ST CAM	Yale STD CAM for STD Mortise Cylinder	cs 269990
ST-IC CAM	Yale STD CAM for IC Mortise Housing	cs 269992
RCTP	Rim Tailpiece	cs 471691

Collars

CR-1 26D	5/32" Solid Mortise Cylinder Collar, US26D	cs 270421
CR-2 26D	1/8" Mortise Cylinder Trim Ring, US26D	cs 270424
CR-3 26D	1/4" Adjust Mortise Cylinder Collar, US26D	cs 270429
CR-1 10B	5/32" Solid Mortise Cylinder Collar, US10B	cs 270420
CR-2 10B	1/8" Mortise Cylinder Trim Ring, US10B	cs 270423
CR-3 10B	1/4" Adjust Mortise Cylinder Collar, US10B	cs 270427
CR-1 3	5/32" Solid Mortise Cylinder Collar, US3	cs 270417
CR-2 3	1/8" Mortise Cylinder Trim Ring, US3	cs 270422
CR-3 3	1/4" Adjust Mortise Cylinder Collar, US3	cs 270425



Builders Hardware

Push, Pull & Kick Plates

PART#	Description	Dimensions	Finish	CLARK PART
BH-70-630	Push	3-1/2"x15"	US32D	cs422332
BH-71-630	Push	4"x16"	US32D	cs422252
BH-7010-630	Pull	5-1/2" center to center, 3-1/2"x15"	US32D	cs422325
BH-7110-630	Pull	5-1/2" center to center, 4"x16"	US32D	cs422249
BH-7116-630	Pull	8" center to center, 4"x16"	US32D	cs422250
BH-10X34-630	Kick Plate	10"x34", 0.05 Thickness	US32D	cs422226
BH-8X34-630	Kick Plate	8"x34", 0.05 Thickness	US32D	cs422256
BH-70-628	Push	3-1/2"x15"	US28	cs422248
BH-71-628	Push	4"x16"	US28	cs422251
BH-7010-628	Pull	5-1/8" center to center, 3-1/2"x15"	US28	cs422247
BH-70-613	Push	3-1/2"x15"	US10B	cs422331
BH-7010-613	Pull	5-1/2" center to center, 3-1/2"x15"	US10B	cs422324
BH-70-605	Push	3-1/2"x15"	US3	cs422329
BH-7010-605	Pull	5-1/8" center to center, 3-1/2"x15"	US3	cs422323

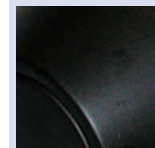
Finishes:



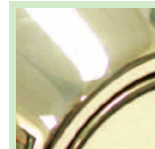
630
U.S. = US32D
Satin Stainless Steel



628
U.S. = US28
Aluminum



613
U.S. = US10B
Dark Bronze, Oil Rubbed



605
U.S. = US3
Bright Brass

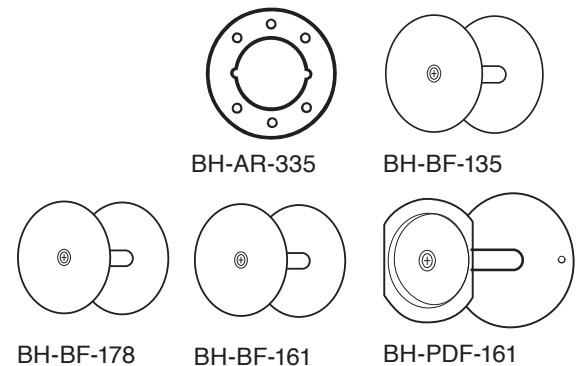
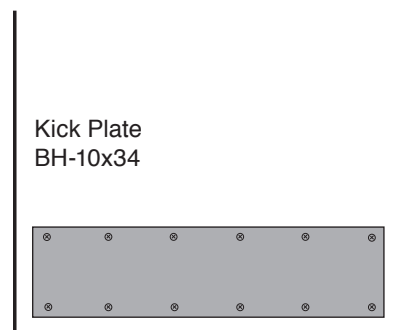
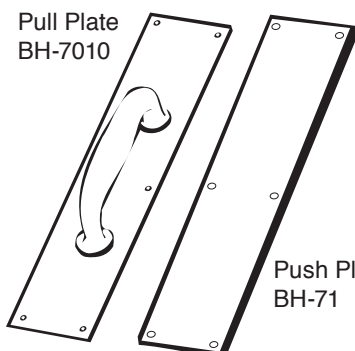
BP = Brass Plated

PC = Prime Coat

SL = Silver

Hole Filler Plates

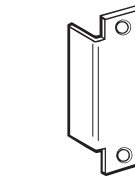
PART#	Description / Dimensions	Finish	CLARK PART
BH-AR-335-630	3-1/2" dia., allows for use of levers on 1-3/8" door	US32D	cs422262
BH-AR-335-613	3-1/2" dia., allows for use of levers on 1-3/8" door	US10B	cs422261
BH-BF-161-BP	Covers up to a 2-1/8" dia.	BP	cs422264
BH-BF-135-PC	Covers up to a 3-3/4" dia.	PC	cs422263
BH-BF-161-PC	Covers up to a 2-1/8" dia.	PC	cs422265
BH-BF-178-PC	Covers up to a 1-1/2" dia.	PC	cs422267
BH-PDF-161-PC	Covers up to 2-1/8" hole under rim panic device	PC	cs422322
BH-BF-161-SL	Covers up to a 2-1/8" dia.	SL	cs422266
BH-BF-178-SL	Covers up to a 1-1/2" dia.	SL	cs422268



Builders Hardware

Filler Plates

PART#	Description / Dimensions	Finish	CLARK PART
BH-AF-260-SL	Aluminum Frame, Electric strike filler, 4-7/8" x 1-1/4"	SL	cs422257
BH-AF-261-SL	Aluminum Frame, Electric strike filler, 4-7/8" x 1-1/4"	SL	cs422258
BH-BTS-160-PC	T-strike with 160 cut out, 2-3/4" x 1-3/8"	PC	cs422272
BH-CV-86	Converts 86 cut out to 161, 8" x 1-1/4"	PC	cs422281
BH-EF-160	160 cut out, 2-1/4" x 1"	PC	cs422284
BH-EF-161	161 cut out, 2-1/4" x 1-1/8"	PC	cs422285
BH-EF-161-S	161 cut out, 2-3/4" x 1-1/8"	PC	cs422286
BH-EF-634	6-3/4" x 1", flush bolt cut out	PC	cs422287
BH-EF-86	86 cut out, 8" x 1-1/4" x 3/16"	PC	cs422288
BH-FF-45	Frame hinge cut out, 4-1/2" x 1-5/8"	PC	cs422292
BH-FS-260-PC	Strike filler, 4-7/8" x 1-1/4"	PC	cs422295
BH-HF-45	Door hinge cut out, 4-1/2" x 1-3/4"	PC	cs422296
BH-HS-060	16-gauge, hinge shim, 4-1/2"	PC	cs422297
BH-HS-090	13-gauge, hinge shim, 4-1/2"	PC	cs422298
BH-SHF-45	Door hinge cut out, 4-1/2" x 1-1/2"	PC	cs422341
BH-FPK-86	Filler Plate Kit, FOR 86 CUT OUT	PC	cs422294
BH-FPK-161	Filler Plate Kit, FOR 161 CUT OUT	PC	cs422293



BH-AF-260



BH-AF-261



BH-BTS-160
T-strike with 160
cut out



BH-FS-260
ANSI strike cut
out



BH-FF-45
Frame hinge
cut out

Scar Plates

PART#	Description / Dimensions	Finish	CLARK PART
BH-DSP-135-630	Fits under deadbolt collars, converts 2-3/8" to 2-3/4"	US32D	cs422283
BH-SP-135-630	Knob scar plate, converts 2-3/8" - 2-3/4"	US32D	cs422346
BH-SP-135-609	Knob scar plate, converts 2-3/8" - 2-3/4"	US5	cs422345
BH-DSP-135-605	Fits under deadbolt collars, converts 2-3/8" to 2-3/4"	US3	cs422282
BH-SP-135-605	Knob scar plate, converts 2-3/8" - 2-3/4"	US3	cs422344



BH-CV-86
Converts 86 cut
out to 161



BH-EF-160
160 cut out
BH-EF-161
161 cut out



BH-EF-634
Flush bolt cut
out



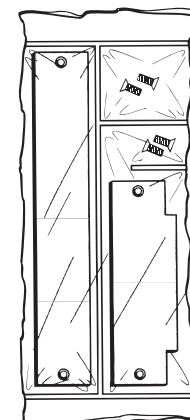
BH-EF-86
86 cut out



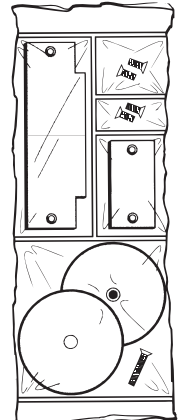
BH-HF-45
BH-SHF-45
Door hinge
cut out



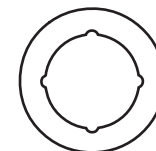
BH-HS-060
16 (.060)
Gauge hinge
shim



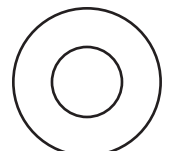
Filler Plate Kit
BH-FPK-86



Filler Plate Kit
BH-FPK-161



Scar Plate
BH-SP-135



Scar Plate
BH-DSP-135

Builders Hardware

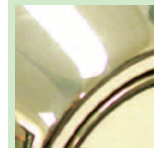
Remodeling Wrap Plates

PART#	Description / Dimensions	Finish	CLARK PART
BH-1-S-CW	2-3/8", 1-3/8", 2-1/8", 4" x 9"	US32D	CS422233
BH-2-S-CW	2-3/8", 1-3/4", 2-1/8", 4" x 9"	US32D	CS422237
BH-4-S-2-CW	2-3/4", 1-3/4", 2-1/8", 4-3/4" x 9"	US32D	CS422242
BH-4-S-CW	2-3/4", 1-3/4", 2-1/8", 4-1/4" x 9"	US32D	CS422243
BH-12-2-S-CW	2-3/4", 1-3/4", 2-1/8", 4-3/4" x 12"	US32D	CS422227
BH-14-S-CW	2-3/4", 1-3/4", 5" x 14"	US32D	CS422230
BH-14-2-S-CW	2-3/4", 1-3/4", 5" x 14"	US32D	CS422228
BH-15-S-CW	2-3/4", 1-3/4", 5" x 15", Simplex 1000	US32D	CS422231
BH-20-S-CW	2-3/4", 1-3/4", 2-1/8", 5" x 20"	US32D	CS422234
BH-27-S-CW	2-3/4", 1-3/4", 5" x 15", Alarm Lock Trilogy	US32D	CS422235
BH-40-S-CW	1-3/4", 4-1/4" x 9", Blank Plate	US32D	CS422240
BH-80-S-CW	1-3/4", 4-1/2" x 4-1/2", Blank Plate	US32D	CS422253
BH-81-S-CW	2-3/4", 1-3/4", 2-1/8", 4-1/4" x 4-1/2"	US32D	CS422255
BH-504-S-CW	1-3/4", 5" x 12", Mortise 86 cut-out	US32D	CS422244
BH-1-PB-CW	2-3/8", 1-3/8", 2-1/8", 4" x 9"	US3	CS422232
BH-2-PB-CW	2-3/8", 1-3/4", 2-1/8", 4" x 9"	US3	CS422236
BH-3-PB-CW	2-3/4", 1-3/8", 2-1/8", 4-1/4" x 9"	US3	CS422239
BH-4-PB-CW	2-3/4", 1-3/4", 2-1/8", 4-1/4" x 9"	US3	CS422241
BH-51-PB-CW	2-3/8", 1-3/8", 2-1/8", 4" x 4-1/2"	US3	CS422245
BH-61-PB-CW	2-3/8", 1-3/4", 2-1/8", 4" x 4-1/2"	US3	CS422246
BH-81-PB-CW	2-3/4", 1-3/4", 2-1/8", 4-1/4" x 4-1/2"	US3	CS422254

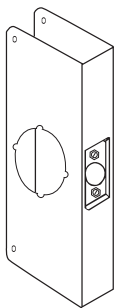
Finishes:



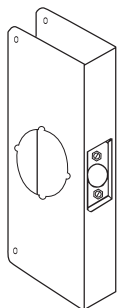
630
U.S. = US32D
Satin Stainless Steel



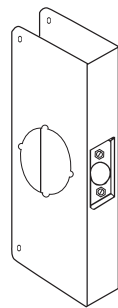
605
U.S. = US3
Bright Brass



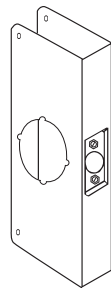
BH-1-PB-CW
BH-1-S-CW



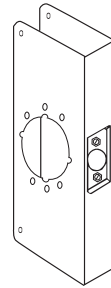
BH-2-PB-CW
BH-2-S-CW



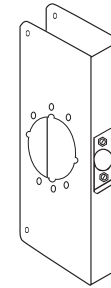
BH-3-PB-CW



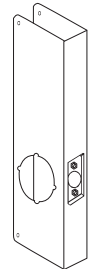
BH-4-PB-CW
BH-4-S-CW



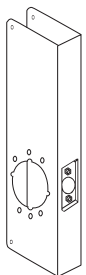
BH-4-S-2-CW



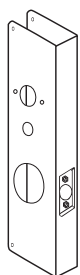
BH-12-2-S-CW



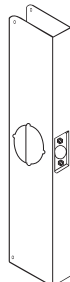
BH-14-S-CW



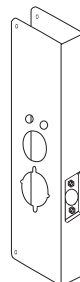
BH-14-2-S-CW



BH-15-S-CW



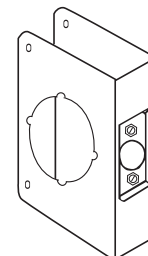
BH-20-S-CW



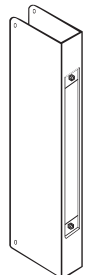
BH-27-S-CW



BH-40-S-CW
BH-80-S-CW



BH-51-PB-CW
BH-61-PB-CW
BH-81-PB-CW
BH-81-S-CW



BH-504-S-CW



ED2300R

Exit Devices

ED2300 Series

PART#	Description	Finish	CLARK PART
ED2300R-F 689 36"	Fire Rated, 36"	ALUM	cs 380429
ED2300R-P 689 36"	Panic, 36"	ALUM	cs 380439
ED2300R-P 689 48"	Panic, 48"	ALUM	cs 380442
ED2300V-P 689 36"	Surf Vertical Rod, Panic, 36" x 84"	ALUM	cs 380475
ED2300R-F 695 36"	Fire Rated, 36"	DURO	cs 380433
ED2300R-P 695 36"	Panic, 36"	DURO	cs 380444
ED2300R-P 695 48"	Panic, 48"	DURO	cs 410995
ED2300V-P 695 36"	Surf Vertical Rod, Panic, 36" x 84"	DURO	cs 380476



ED2300V

Finishes:



630
U.S. = US32D
Satin Stainless Steel



626
U.S. = US26D
Satin Chrome



689
-
Aluminum



695
-
Dark Bronze

ED2300 Series Trims

ED23T-KIK-CLS 630	Key-in-knob, Classroom	SCHL C	US32D	cs 480213
ED23T-KIK-NL-630	Key-in-knob, Storeroom (Night Latch)	SCHL C	US32D	cs 480214
ED23T-PET-NL-630	Pull, Escutcheon, Storeroom (Night Latch), Less CYL	US32D	cs 480215	
ED23T-PET-TP-630	Pull, Escutcheon, Classroom (Thumb Piece), Less CYL	US32D	cs 480217	
ED23T-KIL-CLS 626	Key-in-lever, Classroom	SCHL C	US26D	cs 380481
ED23T-KIL-NL 626	Key-in-lever, Storeroom (Night Latch)	SCHL C	US26D	cs 450557
ED23T-LET-CLS 626	Escutcheon, Classroom	US26D	cs 448442	
ED23T-LET-NL 626	Escutcheon, Storeroom (Night Latch)	US26D	cs 449351	
ED23T-P01 689	Pull Only, No CYL	ALUM	cs 380483	
ED23T-P01-NL 689	Pull, Storeroom (Night Latch), Less CYL	ALUM	cs 380486	
ED23T-FP01-NL 689	Finger Pull, Storeroom (Night Latch), Less CYL	ALUM	cs 480203	
ED23T-KIL-CLS 695	Key-in-lever, Classroom	SCHL C	DURO	cs 402392
ED23T-KIL-NL 695	Key-in-lever, Storeroom (Night Latch)	SCHL C	DURO	cs 450558
ED23T-LET-CLS 695	Escutcheon, Classroom	DURO	cs 448443	
ED23T-LET-NL 695	Escutcheon, Storeroom (Night Latch)	DURO	cs 449352	
ED23T-PET-NL-695	Pull, Escutcheon, Storeroom (Night Latch), Less CYL	DURO	cs 505977	
ED23T-PET-TP-695	Pull, Escutcheon, Classroom (Thumb Piece), Less CYL	DURO	cs 505978	
ED23T-P01 695	Pull Only, No CYL	DURO	cs 380484	
ED23T-P01-NL 695	Pull, Storeroom (Night Latch), Less CYL	DURO	cs 380487	
ED23T-FP01-NL 695	Finger Pull, Storeroom (Night Latch), Less CYL	DURO	cs 480207	
ED23T-CRC	Cylinder retaining cup for P01-NL and PET-NL			cs 485412

Features:

- ANSI A156.3 Grade 2, UL Listed Panic Device, UL Listed 3-hour Fire Device
- Non-handed
- Trim sold separately
- 1-year warranty



ED23T-PET-NL 630



ED23T-PET-TP 630



ED23T-KIK-CLS 630



ED23T-LET 626



ED23T-P01 689



ED23T-KIL-CLS 626



ED23T-P01-NL 695



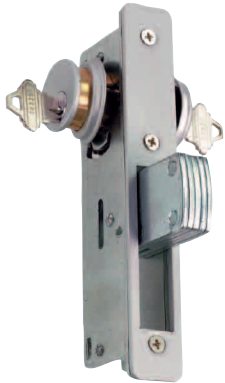
ED23T-CRC



ED23T-FP01-NL

Storefront Hardware

PART#	Description	Faceplate	Finish	CLARK PART
ADB118 AL/DU	1-1/8" B.S. Deadbolt	2FLAT & 2RAD	ALUM & DURO	cs418625
ADB3132 AL/DU	31/32" B.S. Deadbolt	2FLAT & 2RAD	ALUM & DURO	cs418626
ADL118 AL/DU	1-1/8" B.S. Deadlatch	2FLAT & 2RAD	ALUM & DURO	cs418639
ADL3132 AL/DU	31/32" B.S. Deadlatch	2FLAT & 2RAD	ALUM & DURO	cs418643
AHB118 AL/DU	1-1/8" B.S. Hookbolt	2FLAT & 2RAD	ALUM & DURO	cs418619
AHB3132 AL/DU	31/32" B.S. Hookbolt	2FLAT & 2RAD	ALUM & DURO	cs418624



ADB118 AL

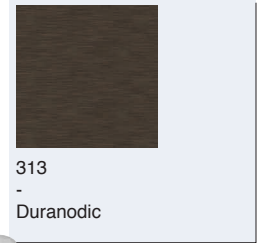


ADL118 AL



AHB118 AL

Finishes:



AFB-AL



AEXIN-AL

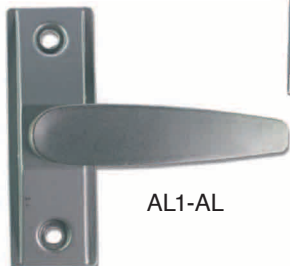
PART#	Description	Finish	CLARK PART
AEXIN-AL	Lock Indicator	ALUM	cs428843
AFB14-AL	1/4" B.S. Flushbolt	ALUM	cs428846
AFB18-AL	1/8" B.S. Flushbolt	ALUM	cs428852
AL1-AL	Lever, LH/RH	ALUM	cs418584
AP1 AL	Push/Pull	ALUM	cs418602
AEXIN-DU	Lock Indicator	DURO	cs428844
AFB14-DU	1/4" B.S. Flushbolt	DURO	cs428851
AFB18-DU	1/8" B.S. Flushbolt	DURO	cs428853
AL1-DU	Lever, LH/RH	DURO	cs418588
AP1 DU	Push/Pull	DURO	cs418605
AHS	2 Signs		cs448071
ACD	Cam Disc (Plug), Reversible for Lever and Push/Pull Handle		cs479614

Features:

- Lock body dimensions: width (7/8"), length (6"), case depth (1.63"-1.78" specific to backset)
- ADB/AHB Latch bolt: 5-ply laminated steel, hardened roller pin, center ply case hardened
- ADL Latch: Zinc alloy with Delrin® plastic insert, zinc die-cast auxiliary bolt
- 4 Face plates included (2 flat, 2 radius, alum & duro): width (1"), length (6-7/8")
- Dead latches field reversible; bolts non-handed
- 10-year warranty



ACD



AL1-AL



AP1 AL

THIS DOOR TO REMAIN UNLOCKED

WHEN THE BUILDING IS OCCUPIED

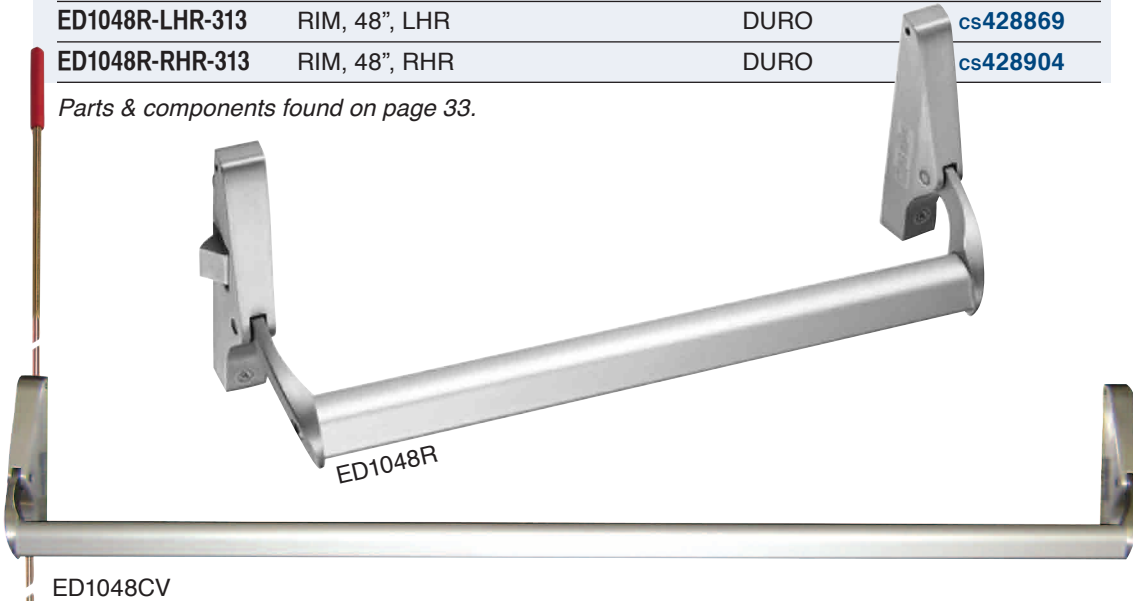
AHS 1 of 2 signs
Other sign states:
THIS DOOR TO REMAIN UNLOCKED
DURING BUSINESS HOURS

Exit Devices

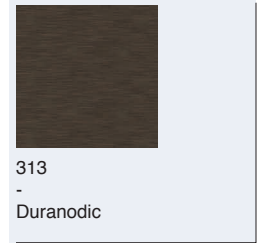
ED1000 Series Narrow Stile

PART#	Description	Finish	CLARK PART
ED1048CV-628	Concealed Vertical Rod, 48" x 84"	US28	cs428868
ED1048R-LHR-628	RIM, 48", LHR	US28	cs428870
ED1048R-RHR-628	RIM, 48", RHR	US28	cs428906
ED1048CV-313	Concealed Vertical Rod, 48" x 84"	DURO	cs428867
ED1048R-LHR-313	RIM, 48", LHR	DURO	cs428869
ED1048R-RHR-313	RIM, 48", RHR	DURO	cs428904

Parts & components found on page 33.



Finishes:



Features:

- UL Listed
- Rim device is handed. CV device is reversible
- 1-year warranty

Door Closer



Overhead Concealed

PART#	Function / Style	Size	CLARK PART
C3700-OH-105-HO-S	105° Hold Open, S ARM ADA	ADJ 1-4	cs479610
C3700-OH-105-NHO-S	105° Non-Hold Open, S ARM ADA	ADJ 1-4	cs479611
C3700-OH-90-HO-S	90° Hold Open, S ARM ADA	ADJ 1-4	cs479612
C3700-OH-90-NHO-S	90° Non-Hold Open, S ARM ADA	ADJ 1-4	cs479613
C3600-OH-105-HO-S	105° Hold Open, S ARM	Size 3	cs421968
C3600-OH-105-NHO-S	105° Non-Hold Open, S ARM	Size 3	cs421969
C3600-OH-90-HO-S	90° Hold Open, S ARM	Size 3	cs428907
C3600-OH-90-NHO-S	90° Non-Hold Open, S ARM	Size 3	cs428908

Features:

- 10-year warranty
- Non-handed, center hung
- Side load arm and pivot set included
- Cast iron body, hardened steel internal springs, closer fluid non-gumming and non-freezing
- Medium spring power (C3600)
- Adjustable Spring Power (C3700)

Door Closers

C9000 Series Surface



PART#	Function / Style	Size	Finish	CLARK PART
C9016 689	TRI-PK	ADJ 1-6	ALUM	cs336794
C9016 695	TRI-PK	ADJ 1-6	DURO	cs336795

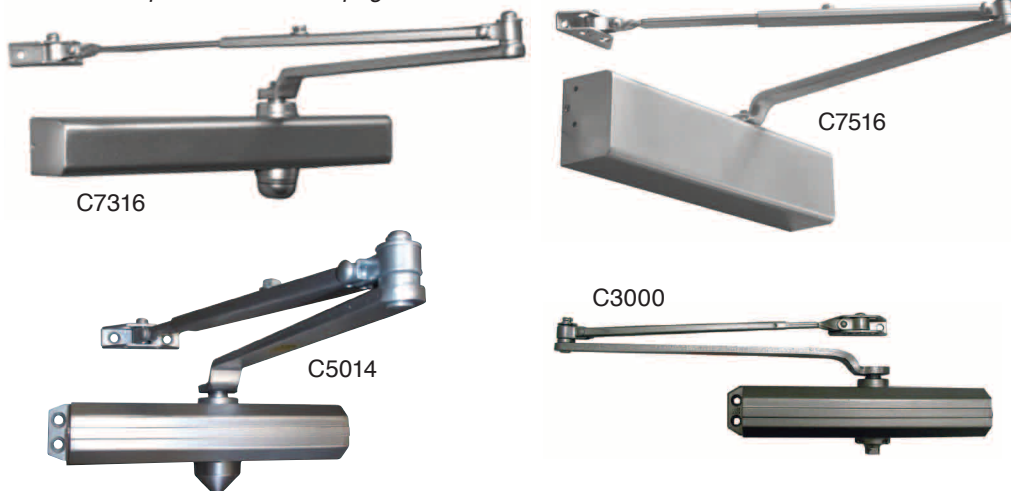
C7000 Series Surface

C7316 689	TRI-PK, SLIM COVER	ADJ 1-6	ALUM	cs275078
C7516 689	TRI-PK, FULL COVER	ADJ 1-6	ALUM	cs275083
C7316 695	TRI-PK, SLIM COVER	ADJ 1-6	DURO	cs275079
C7516 695	TRI-PK, FULL COVER	ADJ 1-6	DURO	cs275084

C5000 Series Surface

C5014 689	TRI-PK	ADJ 1-4	ALUM	cs275073
C5036 689	TRI-PK	ADJ 3-6	ALUM	cs420635
C5014 695	TRI-PK	ADJ 1-4	DURO	cs275074
C5036 695	TRI-PK	ADJ 3-6	DURO	cs420636

Parts & components found on page 32.



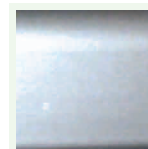
C3000 Series Sized

PART#	Function / Style	Size	Finish	CLARK PART
C3001-689	TRI-PK	SIZE 1	ALUM	cs428854
C3002-689	TRI-PK	SIZE 2	ALUM	cs428856
C3003-689	TRI-PK	SIZE 3	ALUM	cs428858
C3004-689	TRI-PK	SIZE 4	ALUM	cs428860
C3005-689	TRI-PK	SIZE 5	ALUM	cs428864
C3001-695	TRI-PK	SIZE 1	DURO	cs428855
C3002-695	TRI-PK	SIZE 2	DURO	cs428857
C3003-695	TRI-PK	SIZE 3	DURO	cs428859
C3004-695	TRI-PK	SIZE 4	DURO	cs428861
C3005-695	TRI-PK	SIZE 5	DURO	cs428866

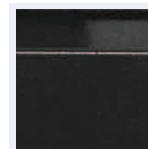
Features:

- ANSI 156.4 Grade 1, UL Listed and UL 10C, Meets ADA requirements when adjusted to size 1
- C9000 series 25-year warranty, C7000 series 10-year warranty, C5000 series 5-year warranty
- Standard sweep, latching and back-check adjustment valves
- Cast aluminum body (C9000 is cast iron body), closer fluid non-gumming and non-freezing
- Maximum reveal depth 4"

Finishes:



689
-
Aluminum



695
-
Dark Bronze

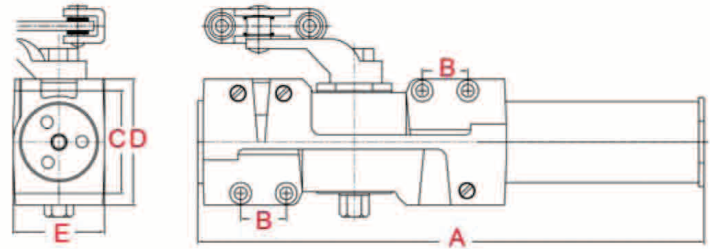
Features:

- ANSI 156.4 Grade 1 (C3005, C3004), Grade 2 (C3003, C3002), Grade 3 (C3001); UL Listed and UL 10C; Meets ADA requirements when adjusted to size 1 (C3001),
- 5-year warranty
- Standard sweep and latching adjustment valves
- Cast aluminum body, closer fluid non-gumming and non-freezing
- Maximum reveal depth 4"

Door Closers Technical Dimensions

C9000 Series Surface

Description	Dimensions C9000
A. Length of closer body	11" (280mm)
B. Horizontal mounting holes	1" (25.4mm)
C. Vertical mounting holes	2-1/4" (57mm)
D. Closer body height	2-3/4" (70mm)
E. Projection from door	2" (51mm)



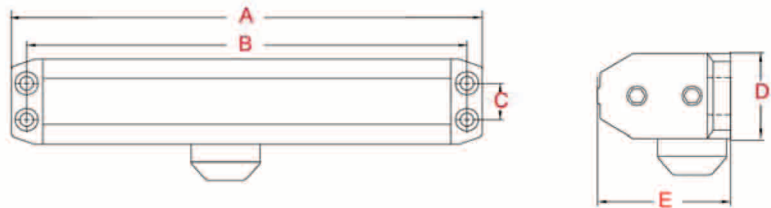
C7000 Series Surface

Description	Dimensions C7000
A. Length of closer body	12-3/4" (324mm)
B. Horizontal mounting holes	12" (304.8mm)
C. Vertical mounting holes	3/4" (19mm)
D. Closer body height	1-3/4" (45mm)
E. Projection from door	2-3/16" (56mm)



C5000 Series Surface

Description	Dimensions C5000
A. Length of closer body	9-3/4" (248mm)
B. Horizontal mounting holes	9-1/16" (230mm)
C. Vertical mounting holes	3/4" (19mm)
D. Closer body height	1-13/16" (46mm)
E. Projection from door	2-3/4" (70mm)



C3000 Series Sized

Description	Dimensions				
	C3001	C3002	C3003	C3004	C3005
A. Length of closer body	7-1/8" (181mm)	8-1/16" (204mm)	8-7/8" (225mm)	9-3/4" (248mm)	9-3/4" (248mm)
B. Horizontal mounting holes	6-1/2" (165mm)	7-3/8" (188mm)	8-3/16" (208mm)	9-1/16" (230mm)	9-1/16" (230mm)
C. Vertical mounting holes	3/4" (19mm)	3/4" (19mm)	3/4" (19mm)	3/4" (19mm)	3/4" (19mm)
D. Closer body height	1-5/8" (41mm)	1-5/8" (42mm)	1-32/32" (50mm)	1-13/16" (46mm)	1-13/16" (46mm)
E. Projection from door	2-15/32" (63mm)	2-13/16" (71mm)	2-29/32" (73mm)	2-3/4" (70mm)	2-3/4" (70mm)

Padlocks

Brass Rekeyable



PL450B10S

PL450

Body material: Solid brass
 Shackle material: Chrome plated hardened steel
 Easy Shackle Change feature: Yes
 Double-ball locking: Yes
 Shelf Pack: 6
 Master carton: 36
 Cylinder: Brass or Less Cylinder
 Rekeyable: Yes
 Key-retaining: Either option available, easily changeable
 OBIT: Yes
 Drilled/pinned: 6-pin, pinned to 5
 Keyway: Schlage, Schlage C-K, Kwikset
 (uses standard Schlage-type cylinder)

Part#	CLARK PART	Width	Length	Thickness	Shackle Diameter	Vertical Clearance*	Horizontal Clearance
PL450B10S RK KW OBIT KR	CS480996	1-13/16"	2-1/16"	24/32"	5/16"	1"	5/16"
PL450B10S RK KW OBIT NKR	CS480997	1-13/16"	2-1/16"	24/32"	5/16"	1"	5/16"
PL450B10S RK LESS CYL W/DRVR	CS480998	1-13/16"	2-1/16"	24/32"	5/16"	1"	5/16"
PL450B10S RK SC OBIT KR	CS480999	1-13/16"	2-1/16"	24/32"	5/16"	1"	5/16"
PL450B10S RK SC OBIT NKR	CS481000	1-13/16"	2-1/16"	24/32"	5/16"	1"	5/16"
PL450B10S RK SX OBIT KR	CS481001	1-13/16"	2-1/16"	24/32"	5/16"	1"	5/16"
PL450B10S RK SX OBIT NKR	CS481002	1-13/16"	2-1/16"	24/32"	5/16"	1"	5/16"
PL450B10S RK KW OBIT KR	CS480996	1-13/16"	2-1/16"	24/32"	5/16"	1"	5/16"

**Long shackles available. See Page 27.*

Components

Grade 1 Cylindrical Parts & Components

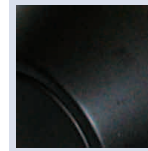
(to be used with L100 and LX100 series)

PART#	Description / Dimensions	Finish	CLARK PART
1DL 626 234 S	Dead latch, 2-3/4" Square Corner	US26D	cs342522
1DL 626 238 S	Dead latch, 2-3/8" Square Corner	US26D	cs342521
1SL 626 238 S	Spring Latch, 2-3/8" Square Corner	US26D	cs342527
1SL 626 234 S	Spring Latch, 2-3/4" Square Corner	US26D	cs342528
1DL 613 234 S	Dead latch, 2-3/4" Square Corner	US10B	cs342520
1DL 613 238 S	Dead latch, 2-3/8" Square Corner	US10B	cs342519
1SL 613 234 S	Spring Latch, 2-3/4" Square Corner	US10B	cs342526
1SL 613 238 S	Spring Latch, 2-3/8" Square Corner	US10B	cs342525
1DL 605 234 S	Dead latch, 2-3/4" Square Corner	US3	cs342518
1DL 605 238 S	Dead latch, 2-3/8" Square Corner	US3	cs342517
1SL 605 234 S	Spring Latch, 2-3/4" Square Corner	US3	cs342524
1SL 605 238 S	Spring Latch, 2-3/8" Square Corner	US3	cs342523
1DL EXT LINK FOR 3-3/4"	3-3/4" Ext. link for 2-3/8" Backset		cs498905
1DL EXT LINK FOR 5"	5" Ext. link for 2-3/4" Backset		cs436459
TS 626	T-strike SQ. corner for G1 & G2 lever	US26D	cs342531
TS 613	T-strike SQ. corner for G1 & G2 lever	US10B	cs342530
TS 605	T-strike SQ. corner for G1 & G2 lever	US3	cs342529
L1 SP 626	Grade 1 Lever 626 Screwpack	US26D	cs498916
L1 SP 613	Grade 1 Lever 613 Screwpack	US10B	cs498917
L1 SP 605	Grade 1 Lever 605 Screwpack	US3	cs498918
L1 TB	Thru-Bolts for Grade 1 Lever		cs502181

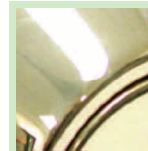
Finishes:



626
U.S. = US26D
Satin Chrome



613
U.S. = US10B
Dark Bronze, Oil Rubbed



605
U.S. = US3
Bright Brass

Components

(to be used with L200, LX200 and K200 series)

PART#	Description / Dimensions	Finish	CLARK PART
2DL 626 234 R	Dead latch, 2-3/4" Radius Corner	US26D	cs288314
2DL 626 234 S	Dead latch, 2-3/4" Square Corner	US26D	cs288323
2DL 626 238 R	Dead latch, 2-3/8" Radius Corner	US26D	cs322886
2DL 626 238 S	Dead latch, 2-3/8" Square Corner	US26D	cs288318
2DL 613 234 S	Dead latch, 2-3/4" Square Corner	US10B	cs288322
2DL 613 238 R	Dead latch, 2-3/8" Radius Corner	US10B	cs322885
2DL 613 238 S	Dead latch, 2-3/8" Square Corner	US10B	cs288317
2DL 605 234 R	Dead latch, 2-3/4" Radius Corner	US3	cs288313
2DL 605 234 S	Dead latch, 2-3/4" Square Corner	US3	cs288321
2DL 605 238 R	Dead latch, 2-3/8" Radius Corner	US3	cs288312
2DL 605 238 S	Dead latch, 2-3/8" Square Corner	US3	cs288316
2DL 234 D	Dead latch, 2-3/4" Drive-In		cs288310
2DL 238 D	Dead latch, 2-3/8" Drive-In		cs288309
2SL 234 D	Spring Latch, 2-3/4" Drive-In		cs322888
2SL 238 D	Spring Latch, 2-3/8" Drive-In		cs322887
2SL 626 234 R	Spring Latch, 2-3/4" Radius Corner	US26D	cs322900
2SL 626 234 S	Spring Latch, 2-3/4" Square Corner	US26D	cs324182
2SL 626 238 R	Spring Latch, 2-3/8" Radius Corner	US26D	cs322897
2SL 626 238 S	Spring Latch, 2-3/8" Square Corner	US26D	cs322899
2SL 613 234 R	Spring Latch, 2-3/4" Radius Corner	US10B	cs322896
2SL 613 234 S	Spring Latch, 2-3/4" Square Corner	US10B	cs324181
2SL 613 238 R	Spring Latch, 2-3/8" Radius Corner	US10B	cs322894
2SL 613 238 S	Spring Latch, 2-3/8" Square Corner	US10B	cs322895
2SL 605 234 R	Spring Latch, 2-3/4" Radius Corner	US3	cs322893
2SL 605 234 S	Spring Latch, 2-3/4" Square Corner	US3	cs324180
2SL 605 238 R	Spring Latch, 2-3/8" Radius Corner	US3	cs322889
2SL 605 238 S	Spring Latch, 2-3/8" Square Corner	US3	cs322890
2DL EXT LINK FOR 3-3/4"	3-3/4" Ext. link for 2-3/8" Backset		cs360919
2DL EXT LINK FOR 5"	5" Ext. link for 2-3/8" Backset		cs413156
L2 IC TP 2	IC Tail piece for Grade 2 IC prep lever		cs463244
L2 TB	Thru-Bolts for Grade 2 Lever		cs482995
TS 626	T-strike SQ. corner for G1 & G2 lever	US26D	cs342531
TS 613	T-strike SQ. corner for G1 & G2 lever	US10B	cs342530
TS 605	T-strike SQ. corner for G1 & G2 lever	US3	cs342529
L2 SP 626	Grade 2 Lever 626 Screwpack	US26D	cs498919
L2 SP 613	Grade 2 Lever 613 Screwpack	US10B	cs498920
L2 SP 605	Grade 2 Lever 605 Screwpack	US3	cs498921
K2 SP 630	Grade 2 Knob 630 Screwpack	US32D	cs498922
K2 SP 613	Grade 2 Knob 613 Screwpack	US10B	cs498923
K2 SP 605	Grade 2 Knob 605 Screwpack	US3	cs498924
K2 IC TP	Tail Piece for Grade 2 SFIC Knob		cs498925

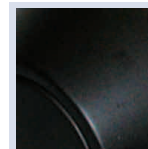
Finishes:



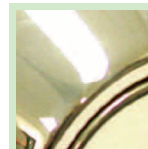
630
U.S. = US32D
Satin Stainless Steel



626
U.S. = US26D
Satin Chrome



613
U.S. = US10B
Dark Bronze, Oil Rubbed



605
U.S. = US3
Bright Brass

Components

Grade 3 Cylindrical Components

(to be used with K300 series)

PART#	Description / Dimensions	Finish	CLARK PART
3DL 630 ADJ R	Dead latch, Adjustable Radius Corner	US32D	cs288328
3DL 630 ADJ S	Dead latch, Adjustable Square Corner	US32D	cs288332
3SL 630 ADJ R	Spring latch, Adjustable Radius Corner	US32D	cs323155
3SL 630 ADJ S	Spring latch, Adjustable Square Corner	US32D	cs324185
3DL 609 ADJ R	Dead latch, Adjustable Radius Corner	US5	cs288327
3SL 609 ADJ R	Spring latch, Adjustable Radius Corner	US5	cs323153
3SL 609 ADJ S	Spring latch, Adjustable Square Corner	US5	cs324184
3DL 605 ADJ R	Dead latch, Adjustable Radius Corner	US3	cs288326
3DL 605 ADJ S	Dead latch, Adjustable Square Corner	US3	cs288329
3SL 605 ADJ R	Spring latch, Adjustable Radius Corner	US3	cs323152
3SL 605 ADJ S	Spring latch, Adjustable Square Corner	US3	cs324183
3DL 238 D	Dead latch, 2-3/8" Drive-In		cs288324
3SL 234 D	Spring latch, 2-3/4" Drive-In		cs323151
3SL 238 D	Spring latch, 2-3/8" Drive-In		cs323150

Grade 3 Tubular Components

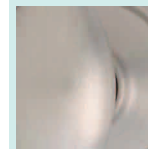
(to be used with KT series)

PART#	Description / Dimensions	Finish	CLARK PART
3TDL 619 6WL	Dead latch, 6-WAY Adjustable	US15	cs495503
3TSL 619 6WL	Spring latch, 6-WAY Adjustable	US15	cs495500
3TDL 609 6WL	Dead latch, 6-WAY Adjustable	US5	cs346252
3TSL 609 6WL	Spring latch, 6-WAY Adjustable	US5	cs346450
3TDL 605 6WL	Dead latch, 6-WAY Adjustable	US3	cs346251
3TSL 605 6WL	Spring latch, 6-WAY Adjustable	US3	cs346449

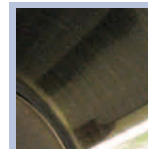
Finishes:



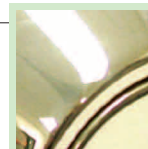
630
U.S. = US32D
Satin Stainless Steel



619
U.S. = US15
Satin Nickel



609
U.S. = US5
Antique Brass

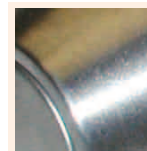


605
U.S. = US3
Bright Brass

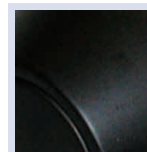
Components

PART#	Description / Dimensions	Finish	CLARK PART
DB-234 626	Bolt, 2-3/4" for D660	US26D	cs 263357
DB-238 626	Bolt, 2-3/8" for D660	US26D	cs 259375
DB-6WL-626	Bolt, 6-WAY Adjustable for D160	US26D	cs 447838
DBA-626	Bolt, Adjustable, Only Sq. Faceplate, for D160	US26D	cs 429311
3DTDB 626 ADJ R	Bolt, 2-WAY Adjustable, Radius Corner, for D360	US26D	cs 314431
3DTDB 626 ADJ D	Bolt, 2-WAY Adjustable, Drive-In, for D360	US26D	cs 315477
DB-234 613	Bolt, 2-3/4" for D660	US10B	cs 263358
DB-238 613	Bolt, 2-3/8" for D660	US10B	cs 259373
DB-6WL-613	Bolt, 6-WAY Adjustable for D160	US10B	cs 447837
DBA-613	Bolt, Adjustable, Only Sq. Faceplate, for D160	US10B	cs 429310
DB-234 605	Bolt, 2-3/4" for D660	US3	cs 263356
DB-238 605	Bolt, 2-3/8" for D660	US3	cs 259372
DBA-605	Bolt, Adjustable, Only Sq. Faceplate, for D160	US3	cs 429309
DB-6WL-605	Bolt, 6-WAY Adjustable for D160	US3	cs 447836
3DTDB 605 ADJ R	Bolt, 2-WAY Adjustable, Radius Corner, for D360	US3	cs 314429
3DTDB 605 ADJ D	Bolt, 2-WAY Adjustable, Drive-In, for D360	US3	cs 315475
3DTDB 609 ADJ R	Bolt, 2-WAY Adjustable, Radius Corner, for D360	US5	cs 314430
3DTDB 609 ADJ D	Bolt, 2-WAY Adjustable, Drive-In, for D360	US5	cs 315476
DLGL 234 626 S	Gate Latch Mechanism Only, 2-3/4" SQ. CORNER	US26D	cs 449680
DLGL 238 626 S	Gate Latch Mechanism Only, 2-3/8" SQ. CORNER	US26D	cs 449225
DLGL 234 605 S	Gate Latch Mechanism Only, 2-3/4" SQ. CORNER	US3	cs 449678
DLGL 238 605 S	Gate Latch Mechanism Only, 2-3/8" SQ. CORNER	US3	cs 449223
D1D2 DC TDK 214 626	Thick Door Kit to 2-1/4" for D662 and D162 Double Cylinder	US26D	cs 468941
D1D2 SC TDK 214 626	Thick Door Kit to 2-1/4" for D660 and D160 Single Cylinder	US26D	cs 468943
D1D2 SC IC TDK 214 626	Thick Door Kit to 2-1/4" for D660 SCHL C and D160 SCHL C, Single Cylinder	US26D	cs 502182
D1D2 DC TDK 214 613	Thick Door Kit to 2-1/4" for D662 and D162	US10B	cs 483539
D1D2 SC TDK 214 613	Thick Door Kit to 2-1/4" for D660 and D160 Single Cylinder	US10B	cs 483537
D1D2 SC IC TDK 214 613	Thick Door Kit to 2-1/4" for D660 SCHL C and D160 SCHL C, Single Cylinder	US10B	cs 502183
D1D2 SC TDK 214 605	Thick Door Kit to 2-1/4" for D660 and D160 Single Cylinder	US3	cs 468939
D1D2 DC TDK 214 605	Thick Door Kit to 2-1/4" for D662 and D162 Double Cylinder	US3	cs 468938
D1D2 SC IC TDK 214 605	Thick Door Kit to 2-1/4" for D660 SCHL C and D160 SCHL C, Single Cylinder	US3	cs 502184
D1D2 SC C TP	Tailpiece for D660 SCHL C & D160 SCHL C, Single Cylinder		cs 498906
D1D2 DC C TP - IN	Tailpiece for D662 SCHL C & D162 SCHL C, Double Cylinder, Inside		cs 498912
D1D2 DC C TP - EX	Tailpiece for D662 SCHL C & D162 SCHL C, Double Cylinder, Outside		cs 498913
D1D2 SC IC TP	Tailpiece for D660 SFIC & D160 SFIC, Single Cyl		cs 498914
D1D2 DC IC TP	Tailpiece for D662 SFIC & D162 SFIC, Double Cyl		cs 498915
D3-DC-TP	Tailpiece for D362 Double Cylinder		cs 480572
D3-SC-TP	Tailpiece for D360 Single Cylinder		cs 480573

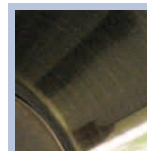
Finishes:



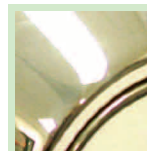
626
U.S. = US26D
Satin Chrome



613
U.S. = US10B
Dark Bronze, Oil Rubbed



609
U.S. = US5
Antique Brass



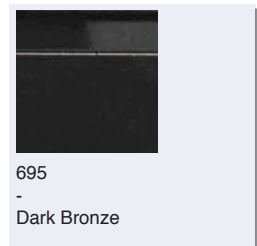
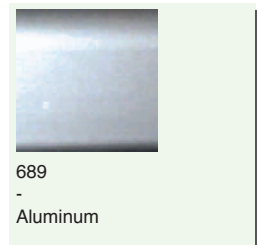
605
U.S. = US3
Bright Brass

Components

Door Closer Components

PART#	Description / Dimensions	Finish	CLARK PART
5000-DP 689	Drop Plate for C5000	ALUM	cs275048
5000-DP 695	Drop Plate for C5000	DURO	cs275049
7000-DP 689	Drop Plate for C7000	ALUM	cs275055
7000-DP 695	Drop Plate for C7000	DURO	cs275056
9016-DP 689	Drop Plate for C9016	ALUM	cs336787
9016-DP 695	Drop Plate for C9016	DURO	cs336788
9016-DP PA 689	Parallel Arm Drop Plate for C9016	ALUM	cs349899
9016-DP PA 695	Parallel Arm Drop Plate for C9016	DURO	cs349900
5000-H 689	Friction Hold Open Arm for C5000	ALUM	cs275057
5000-H 695	Friction Hold Open Arm for C5000	DURO	cs275058
7000-H 689	Friction Hold Open Arm for C7000	ALUM	cs275064
9016-H 689	Friction Hold Open Arm for C9016	ALUM	cs336789
9016-MH 689	Mechanical Hold Open Arm w/ stop for C9000	ALUM	cs357240
9016-MH 695	Mechanical Hold Open Arm w/ stop for C9000	DURO	cs357241
9016-S 689	Non Hold Open Arm w/ stop for C9000	ALUM	cs357238
9016-S 695	Non Hold Open Arm w/ stop for C9000	DURO	cs357239
5500-C 689	Cover for C5000	ALUM	cs275044
36/3700-S	S Type Side Loading Arm for C3600 & C3700		cs502236
36/3700-A-1	RE Type End Loading 1" C3600 & C3700		cs502238
36/3700-K-5/8	RE Type End Loading 5/8" C3600 & C3700		cs502239
36/3700-PT-7/8	RE Type End Loading 7/8" C3600 & C3700		cs502240
36/3700-JOXAL-9/16	TD Type Offset Arm, ALUM, 9/16 C3600 & C3700		cs502241
36/3700-JOXDU-9/16	TD Type Offset Arm, DURO, 9/16 C3600 & C3700		cs502242
36/3700-VOXAL-7/8	TD Type Offset Arm, ALUM, 7/8 C3600 & C3700		cs502246
36/3700-VOXDU-7/8	TD Type Offset Arm, DURO, 7/8 C3600 & C3700		cs502249

Finishes:



C5000 Series



Drop plate for the 5000 Series closer. 5000-DP shown



Friction hold-open arm for the 5000 Series closer. 5000-H shown



Full cover for the 5000 Series closer. 5500-C shown

C9000 Series



Drop plate for the 9000 Series closer. 9016-DP shown



Parallel arm drop plate for 9000 Series closer. 9016-DP PA shown



Friction hold-open arm for the 9000 Series closer. 9016-H shown



Mechanical hold - open arm with turn and stop for the 9000 Series closer. 9016-MH shown

C7000 Series



Drop plate for the 7000 Series closer. 7000-DP shown



Friction hold-open arm for the 7000 Series closer. 7000-H shown

Components


ED2300 Series Components

PART#	Description / Dimensions	Finish	CLARK PART
ED23-ECS 689	End Cap SET	ALUM	cs444019
ED23-ECS 695	End Cap SET	DURO	cs444020
ED23ER-12 689	12" Extension Rod for ED2300V	ALUM	cs415269
ED23ER-12 695	12" Extension Rod for ED2300V	DURO	cs448072
ED23-RBA 689	Bottom Rod Assembly for ED2300V	ALUM	cs444028
ED23-RBA 695	Bottom Rod Assembly for ED2300V	DURO	cs444029
ED23-RTA78 689	Top Rod Assembly 7'-8' for ED2300V	ALUM	cs444030
ED23-RTA78 695	Top Rod Assembly 7'-8' for ED2300V	DURO	cs444031
ED232-RP	Roller Strike w/shim for ED2300R-P		cs444016
ED233-RF	Roller Strike w/shim for ED2300R-F		cs444017
ED23-SNB 689	Sex Nuts & Bolts (SNB)	ALUM	cs444032
ED23-SNB 695	Sex Nuts & Bolts (SNB)	DURO	cs444033
ED S 237 630	Rim Strike for Double Doors for ED2300R	US32D	cs395553
ED23-BOTTOM STRIKE	Bottom Strike for ED2300V		cs446238
ED23-TOP STRIKE	Top Strike for ED2300V		cs446241
ED23-LBA 689	Bottom Latch Assembly for ED2300V	ALUM	cs444021
ED23-LBA 695	Bottom Latch Assembly for ED2300V	DURO	cs444025
ED23-LTA 689	Top Latch Assembly for ED2300V	ALUM	cs444026
ED23-LTA 695	Top Latch Assembly for ED2300V	DURO	cs444027

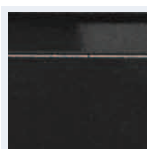
ED1000 Series Components

PART#	Description / Dimensions	Finish	CLARK PART
ED10CES 628	Rim Cylinder Pad/Escutcheon for ED1048	ALUM	cs452145
ED10CES 313	Rim Cylinder Pad/Escutcheon for ED1048	DURO	cs452143
ED10CVER-12	12" Extension Rod for ED1048CV		cs439328
ED10CVER-24	24" Extension Rod for ED1048CV		cs439329

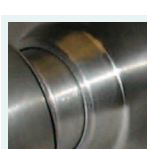
Finishes:



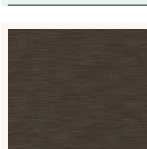
689
-
Aluminum



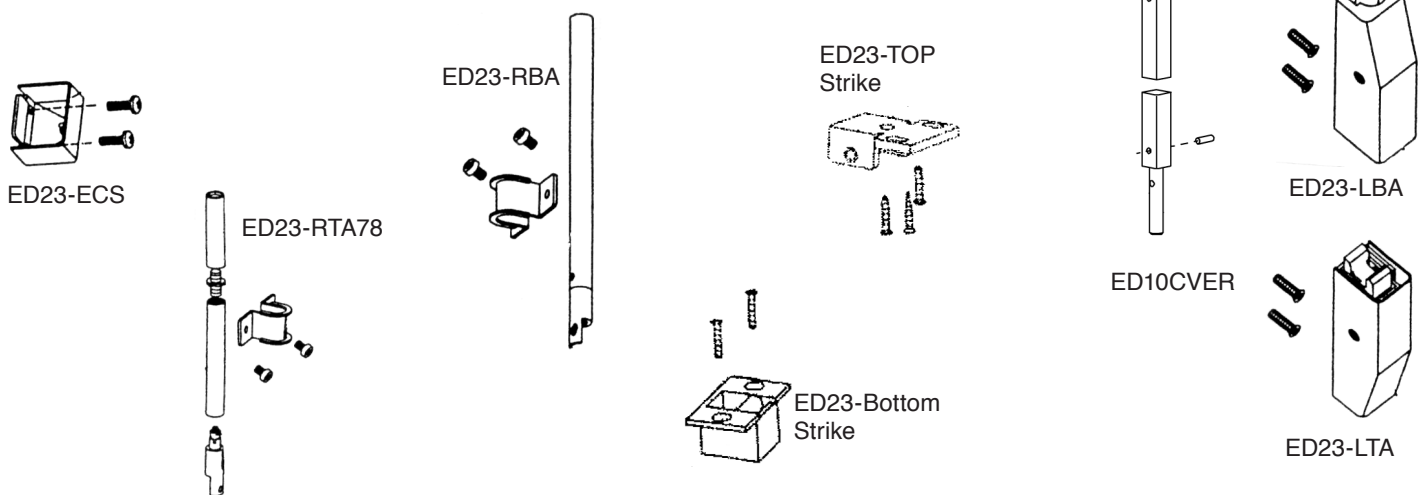
695
-
Dark Bronze



630
U.S. = US32D
Satin Stainless Steel



313
-
Duranodic



FINISH CODE NUMBERS:			
605	US3	Bright Brass	ALUM = Aluminum
606	US4	Satin Brass	DURO = Duranodic
609	US5	Antique Brass	
613	US10B	Dark Bronze, Oil Rubbed	BP = Brass Plated
619	US15	Satin Nickel	PC = Prime Coat
626	US26D	Satin Chrome	SL = Silver
628	US28	Aluminum	
630	US32D	Satin Stainless Steel	313 = Duranodic
689	-	Aluminum	
695	-	Dark Bronze	
697	US3	Bright Brass Plated	
700	US26	Bright Chrome Plated	

CERTIFICATIONS:

Many products sold by General Lock are independently tested and comply with ANSI and UL standards. Field modification or disassembly beyond normal installation will void certification. Please see UL and ANSI web sites for details on certifications mentioned in this catalog.

- ANSI
- Underwriters Laboratories, Inc.
- Federal Specifications
- ADA
- California Fire Marshal Code



Copyright: © 2013 GL Acquisition Corporation. All text, graphics, photographs, and any selection, coordination, and arrangement of such materials contained herein is copyrighted and owned by General Lock. No material from this catalog may be copied, reproduced, republished, uploaded, posted, transmitted, or distributed in any way unless permission has been expressly granted by General Lock and any reproduction of this catalog, in whole or in part, and/or any information or materials contained in it is prohibited without the express authorization of General Lock. General Lock is a trademark or registered trademark of General Lock. ANY MATERIALS OR INFORMATION PROVIDED BY GENERAL LOCK IN THIS CATALOG IS PROVIDED "AS IS" WITHOUT WARRANTY OF ANY KIND. GENERAL LOCK ASSUMES NO RESPONSIBILITY FOR ERRORS OR OMISSIONS IN THIS CATALOG, OR OTHER PUBLICATION OR OTHER DOCUMENTS, WHICH ARE REFERENCED BY THIS PUBLICATION.

All other brand names or product names, including Arrow, Best, Corbin-Russwin, Falcon, Kwikset, KSP, Sargent, Schlage, Weiser, and Yale, referenced herein are trademarks, registered trademarks, service marks, or trade names of the respective manufacturers of such products and are owned by their respective holders.

General Lock reserves the right to make changes in designs and specifications, to make addition or improvements on its products or to discontinue products without incurring any obligation. General Lock is not responsible for modification, addition or alteration to our products by others. Products may not appear as.

General Lock warrants only to Buyer that the products will be free from defects in material and workmanship for a period of 12 months from the date of shipment of the products unless a longer period is specified. This warranty does not cover wear and tear and shall be ineffective and shall not apply to products that have been subjected to misuse or abuse, neglect, accident, damage, or improper installation, or maintenance. Buyer's sole and exclusive remedy under these warranties will be limited to, at General Lock's sole option and expense, refund of the purchase price of, or the repair or replacement for of, the products or parts thereof which General Lock reasonably determines do not conform with these warranties. Buyer will inspect the products upon delivery and will promptly notify General Lock in writing of any defect in the products.

DISCLAIMER OF WARRANTIES: THE FOREGOING WARRANTIES ARE EXCLUSIVE AND IN LIEU OF, AND GENERAL LOCK DISCLAIMS, AND BUYER WAIVES, ALL OTHER WARRANTIES OF MERCHANTABILITY, FITNESS FOR A PARTICULAR PURPOSE AND OF ANY OTHER TYPE, WHETHER EXPRESS OR IMPLIED, ARISING BY LAW (STATUTORY OR OTHERWISE) AND WHETHER OR NOT OCCASIONED BY GENERAL LOCK'S NEGLIGENCE.

LIMITATION OF LIABILITY: IN NO EVENT SHALL GENERAL LOCK BE LIABLE FOR ANY SPECIAL, INCIDENTAL, INDIRECT, PUNITIVE, OR CONSEQUENTIAL DAMAGES, INCLUDING ANY DAMAGES OCCASIONED BY GENERAL LOCK'S NEGLIGENCE. IN ADDITION, GENERAL LOCK'S LIABILITY ON ANY CLAIMS FOR DAMAGES OR CLAIMS ARISING OUT OF OR CONNECTED WITH THIS AGREEMENT OR THE SALE, DELIVERY OR USE OF THE PRODUCTS SHALL NOT EXCEED THE PURCHASE PRICE OF THE PRODUCTS AND/OR SERVICES DELIVERED.

CLARK Security Products is a leading wholesale distributor of door hardware, key systems, CCTV, access control and security solutions. We partner with leading manufacturers to stock over 25,000 items in 17 distribution centers nationwide. Through our partnership with Anixter, a leading global distributor of communications and security products, we provide our customers with a broad range of innovative security solutions.



ANAHEIM.....800.889.5625	KENTUCKY.....800.659.5625	SACRAMENTO.....800.245.3003
ATLANTA.....800.669.5625	LAS VEGAS.....800.775.5625	SALT LAKE CITY.....800.453.6430
CHICAGO.....800.755.5625	NEW ENGLAND.....800.746.5625	SAN DIEGO.....800.542.5625
DALLAS.....800.483.5625	NEW JERSEY.....800.578.5625	SEATTLE.....800.942.5275
DENVER.....800.282.5625	ORLANDO.....800.669.5625	WASHINGTON D.C.....800.578.5625
HOUSTON.....800.483.5625	PHOENIX.....800.775.5625	

FUNCTIONS: ANSI Code

10 - PASSAGE SET F75
Latch bolt operated by knob/lever, from either side at all times.

40 - PRIVACY LOCK F76
Latch bolt operated by knob/lever from either side. Outside knob/lever is locked by push button or other locking device inside and unlocked by emergency release outside, operating inside knob/lever or closing door.

53 - ENTRANCE LOCK F109
Dead locking latch bolt operated by knob/lever from either side except when outside knob/lever is locked by the push or turn button inside. Key outside or operating inside knob/lever releases push or turn button unlocking outside knob/lever except when push or turn button has been rotated to keep outside knob/lever locked. Inside push or turn button must be manually operated to unlock outside knob/lever. Inside knob/lever always operates latch bolt.

70 - CLASSROOM LOCK F84
Dead locking latch bolt operated by knob/lever from either side except when outside knob/lever is locked from outside by key. Inside knob/lever always operative.

80 - STOREROOM LOCK F86
Dead locking latch bolt operated by key in outside knob/lever, or by operating inside knob/lever. Outside knob/lever is always inoperable.

82 - ASYLUM / INSTITUTIONAL LOCK F87
Dead locking latch bolt operated by key in levers, from either side. Both levers always inoperable.

95 - CLASSROOM SECURITY LOCK F110
Dead locking latch bolt operated by lever from either side. Key either inside or outside locks or unlocks outside lever. Inside lever always operates latch bolt.

ELECTRICALLY UNLOCKED (Fail Secure)
Dead locking latch bolt operated by outside lever when outside lever is unlocked by electric current, by key in outside lever, or by operating inside lever