

A COMPLETE REFERENCE FOR THE LOCKSMITH INDUSTRY

Table of Contents

CAM LOCKS	3
Stock Key Codes	
Non Stock Options	
Non Stock Keying Options	
CAM LOCK ACCESSORIES	4
ODDCRK-30	
ODDMASTER-CRK	
Rotations	
Straight & Bent Cams	
PIN TUMBLER POSTAL LOCKS/ MULTI-CAM AND KEYING	5
PTR-656UN	
PTR-DC656UN	
PT812RN5CPA	
OEM POSTAL REPLACEMENT MAIL BOX LOCKS	6
SPECIALTY LOCKS	8
Ratchet Showcase Locks	
Utility Tool Box Plunger Lock	
Flush Mount Plunger Lock	
Wood Desk Locks	
Metal Desk Locks	
Thumb Turn Locks	
Push Button File Cabinet Locks	
Installation Template Plates	
Amarlite Lock Replacement	
AMES DOOR & LOCK SUPPORT	10
Ratchet Showcase Locks	
Utility Tool Box Plunger Lock	
Flush Mount Plunger Lock	
HIDE-A-KEY	10
Hide-A-Key	
Hide-A-Key PLUS	
KEY CUTTERS	11
KEY CUTTING MACHINES CUTTING BITS TRACERS	12

Quick Ship Program

The Quik Ship Program offers the most popular locks at near immediate delivery. ESP manufacturers cam locks, postal approved locks, specialty locks and key blanks for the Locksmith Distribution Market. Our goal is to provide our products in a timely manner with all options included in one bag at a competitive price. This enables the installer to inventory fewer products and still be able to meet your customers' needs.

Our STOCK cam locks include ESP and Hudson Lock keyed alike codes. In addition, we stock our competitors' most popular keyed alike codes. All you need is ESP and you will be able to fulfill all of your customers keyed alike needs no matter who the manufacturer. Our Stock POSTAL Approved LOCKS are available in Dust Shuttered or Non-Dust Shuttered with multiple cams. Our Specialty Lock/Accessory line includes Showcase Locks, Wooden/Metal Desk Drawer Locks and File Cabinet Locks.

Quik Ship items are highlighted in blue text through out this catalog for immediate delivery.

ESP Lock Products

Hudson Lock LLC and ESP Lock Products lead the industry in delivering the highest quality and best value for security products. Since 1963, we have been designing and manufacturing highly engineered, custom, and specialty medium-security locks; keys as well as a huge variety of standard and specialty products for the Locksmith Distribution Market.

Hudson / ESP is able to supply the most competitive product lines of key blanks and locks due to our focus on operational excellence including high speed, quality controlled automation processes in manufacturing and assembly.

Dedicated to quality, Hudson and ESP's products are counted on across the globe by customers that demand the best. As part of our commitment to quality, Hudson Lock LLC / ESP Lock Products is ISO 9001 registered and fully RoHS compliant.



Industry Cross Reference Chart

SINGLE BITTED CAM LOCKS						
SIZE	ESP/HUDSON	NATIONAL	FORT	CHICAGO	CCL	ILCO
1 1/32"	ULR-344					
7/16"	ULR-437	C8501	MFW 23038			33803
5/8"	ULR-625	C8052	MFW 23058	1725	15751	35803
7/8"	ULR-875	C8054	MFW 23078	1701	15752	37803
1 1/8"	ULR-1125	C8053	MFW 23118	1702	15753	31103
1 3/8"	ULR-1375		MFW 23138	1704	15760	31303
1 7/16"	ULR-1437	C8055				
1 3/4"	ULR-1750					
POSTAL LOCKS / 5 CAM MULTI-PACK						
	PT812RN5CPA	C8730				
	PTR-656UN					
	PTR-DC656UN	C8735				
PIN TUMBLER PUSH BUTTON FILE CABINET LOCKS						
	PTR-1750P312		312 HON			
	PTR-1750S312	C8150	312 HON	5001LP		
	PTR-1750S500		Anderson Hickey			
	PTR-1750P500		Anderson Hickey			
	PTR-2000S344		344 HON	5002LP		
SINGLE BITTED WOOD DRAWER LOCKS						
3/4"	ULR-WL750	C8703	MFW 23006	1965		
7/8"	VWDL-C8703521	C8803	MFW 23007	1968	2060	980
1-1/8"	ULR-WL1125					
SINGLE BITTED METAL DRAWER LOCKS						
	ULR-T585MDL	C8701	MFW 23010	1974/5	2060	
SINGLE BITTED SHOWCASE/RATCHET LOCK WOOD/GLASS						
	15RL		SG 23000			247
SINGLE BITTED SLIDING DOOR POP-OUT LOCKS						
	ULR-1030FM / G2139	C8042	MFW SD 990	1770	2069	990



Cam Locks

The ULR Series (Utility Lock Replacement) Cam Locks are manufactured and stocked to carry other manufacturers' key blanks and codes. All stock Keyed Alike ESP, Hudson, National and Fort codes are available for immediate delivery. Locks available in 11/32", 7/16", 5/8", 7/8", 1-1/8", 1-3/8", 1-7/16" and 1 3/4" lengths. Parts included in bag allow for 90 or 180 degree rotation, restricted key pull, straight or offset cams.

Stock Key Codes [ESP, Hudson, Fort, National, Chicago]

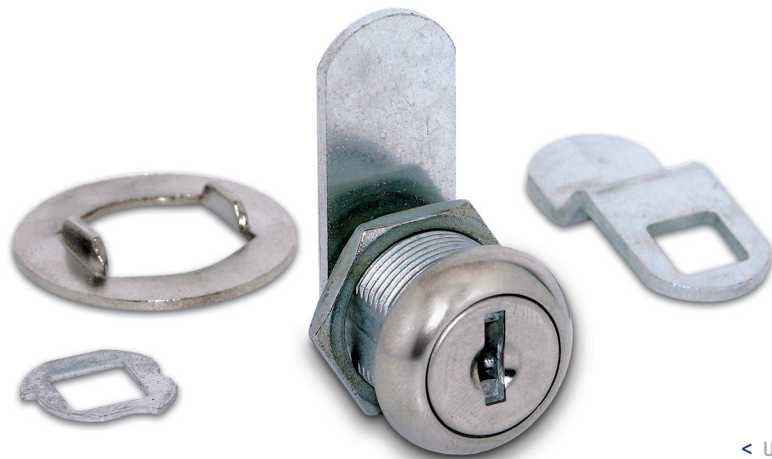
- ES201
- HL 302
- CH751
- FL 217
- FL 221
- NCL C346A
- NCL C413A
- NCL C415A
- Keyed Different

Non Stock Options

- Dust Shuttered
- Stainless Steel Automotive Grade Dust Shuttered (Magnum)
- Multiple Finishes

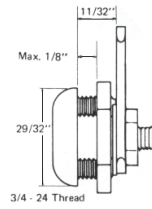
Non Stock Keying Option

- Master Keyed
- 200 Keyed Different

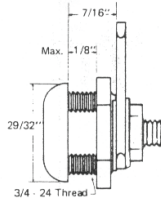


< ULR-625STD-ES201

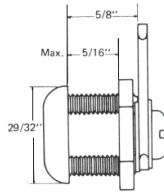
ULR-344STD



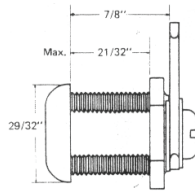
ULR-437STD



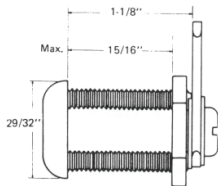
ULR-625STD



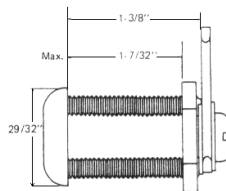
ULR-875STD



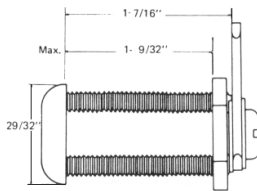
ULR-1125STD



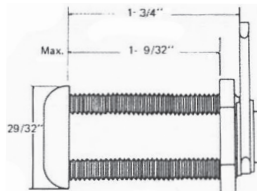
ULR-1375STD



ULR-1437STD



ULR-1750STD



Not available in NCL Codes:
C346A, C413A, C415A

* Blue Lettering indicates Quik Ship



Cam Lock Accessories

Cam Lock Re-keying Kit: Here's a no frills kit that gives you exactly what you need to re-key cam locks—namely, Wafer Tumblers and Springs! We've eliminated unnecessary parts that clutter up your work area. You get exactly what you need, nothing more, and nothing less! Used in re-keying 90% of the wafer cam locks in the market place, the CRK-30 features a portable, spill proof, durable vinyl case that fits in your shirt pocket.

ODDMASTER-CRK

Contains 432 regular tumblers, 2160 master tumblers, and 864 springs for all your re-keying needs.



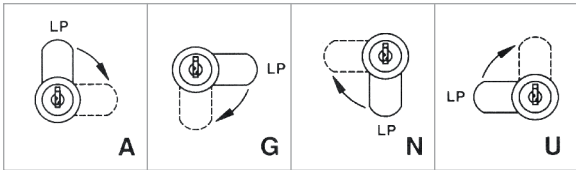
< ODDCRK-30 >



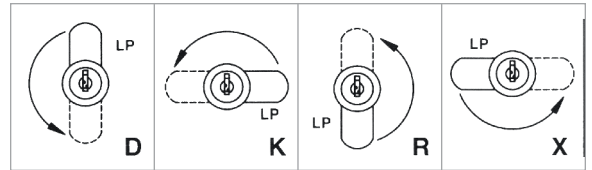
ROTATIONS

Flats on shell are parallel to keyway in Locked Position. In all locked positions, key biting is up at 12 o'clock. Please specify if shell stop is at 12 o'clock or indifferent.

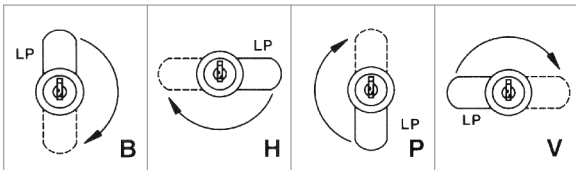
90° Clockwise



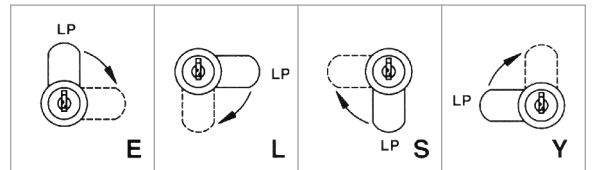
90° Counter Clockwise



180° Clockwise



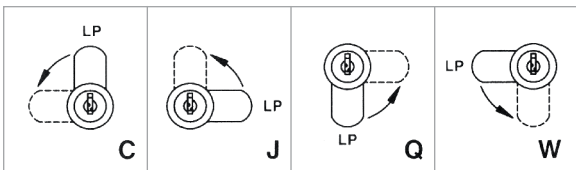
180° Counter Clockwise



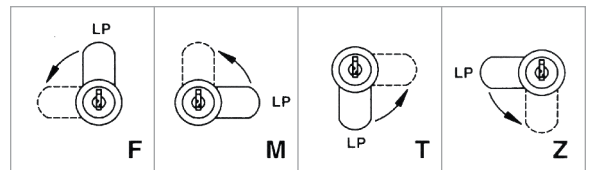
STRAIGHT & BENT CAMS

Key removable in locked and unlocked positions.

90° Clockwise



90° Counter Clockwise



Pin Tumbler Postal Locks | Multi-Cam

Our postal locks have been approved by the Manufacturers of USPS Postal Equipment. ESP offers 4 different multi cam packages to ensure lock compatibility in the field. We offer standard lengths of .656 (ESP) & .812. The 656 can be ordered for outdoor (Dust Shuttered) or indoor (Non-Dust Shuttered) applications. Furnished with 5 cams, 2 clips and 2 slots, ESP accommodates varied door thicknesses.

ESP is the only US manufacturer that offers threaded cylinders mounted with a Hex Nut. This feature insures Higher Security and accommodates any door thickness. Need a postal lock? ESP offers every option you need in the field.

Keying

1000 keyed different codes guaranteed.

PTR-656UN

PACKAGE CONTENTS: 1 lock (Non Dust Shuttered) with 2 keys, 5 OHE replacement cams, 2 different gauge Mounting Clips.



PT812RN5CPA

HL1 (Hudson Lock Replacement), .812 Cylinder Length Threaded, 7/8" face diameter, 5 OEM replacement cams, 2 nickel plated keys, Hudson Keyway. Ideal for High Security applications with oversized door thickness. Mount with Hex Nut included.



PTR-DC656UN

PACKAGE CONTENTS: 1 lock (Dust Shuttered) with 2 keys, 5 OEM replacement cams, 2 different gauge Mounting Clips. Specified for outdoor applications.



OUTDOOR MAGNUM CAM LOCK



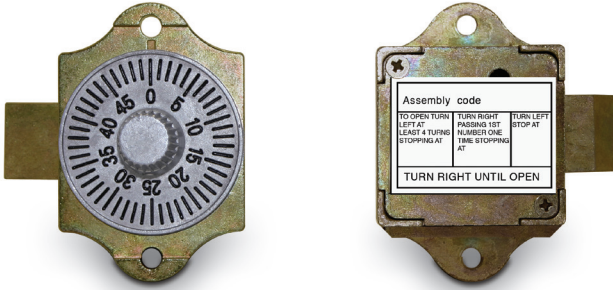
OUTDOOR MAGNUM CAM LOCK FEATURES

- 1.] Automotive 302 S.S. Dust Shutter
- 2.] 1000 Codes Available
- 3.] 6 Wafers Including Anti Pick In First Position
- 4.] Passes ASTM E331 Water Ingress Test
- 5.] Passes SAE J726 Resistance To Dust Ingress Test
- 6.] Passes 1000 Hours of Salt Spray Per ASTM B117
- 7.] Choose E,L,S or Y rotation from page 5

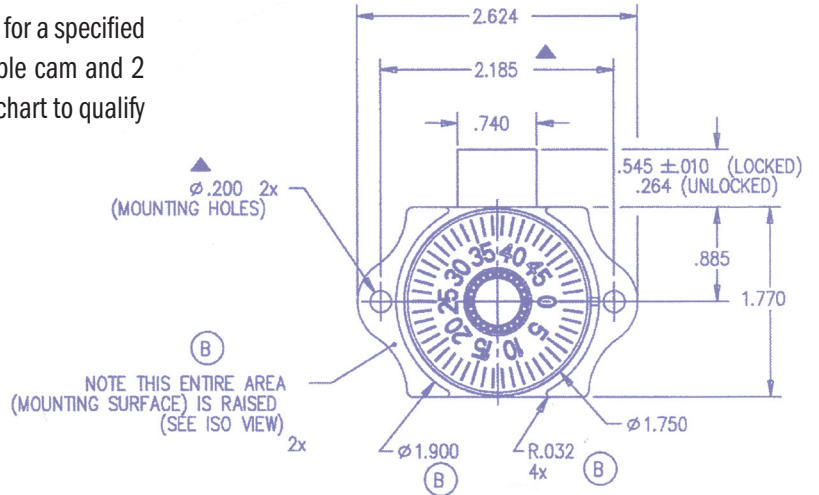


OEM Postal Replacement Mailbox Locks

ESP'S OEM postal replacement lock program offers specific locks for a specified box manufacturer. Each lock is equipped with 2 keys, a removable cam and 2 different grade mounting clips. See the enclosed cross reference chart to qualify your specific need. See Appendix below.



ESP/Hudson VRT-AF-Combo Lock



CAM NO.	REPLACES	PART NO.	NATIONAL LOCK EQUIVALENT	DIRECTION OF TURN TO OPEN	LOCKED CAM POSITION
XPS-02	Auth	PTR-656-02	C8713	90° CW	Left
XPS-03	Bommer	PTR-656-03	C8710	90° CCW	Left
XPS-04B	Cutler Federal	PTR-656-04B	C8725	90° CCW	Left
XPS-05	Florence	PTR-656-05A	C8715	90° CW	Up
XPS-20	Dura Steel 208B	PTR-656-20	C8720	90° CW	Down
XPS-21	Permabilt 201A	PTR-656-21	C8721	90° CCW	Left
XPS-22	Dura Steel 202C	PTR-656-22	C8722	90° CW	Down
XPS-23	Jensen General 205D	PTR-656-23	C8723	90° CCW	Left
XPS-24	Bommer Hook	PTR-656-24	C8724	90° CCW	Left
XPS-50	American Device	PTR-656-50	C8714	90° CCW	Left
XPS-56	Riopel, CMC	PTR-656-56	—	90° CW	Right
XPS-57	Riopel	PTR-656-57	—	90° CW	Right
XPS-58	Miami Carey	PTR-656-58	C8719	90° CCW	Up
—	CW Lock Only	PTR-656-RXXY	—	90° CW	—
—	CCW Lock Only	PTR-656-RXXZ	—	90° CCW	—

* Cams for these applications are standard in the PTR-656UN and PTR-656UN-HN



Speciality Locks

The ESP speciality lock line includes a complete line of Wood and Metal Desk Drawer Locks, Ratchet Show Case Locks, Plunger and Push Button File Cabinet Locks. Available keyed alike, keyed different and master keyed. 2-keys per lock.

RATCHET SHOW CASE LOCKS

15RL*- Universal package includes one lock, one 8RL and one 7RL ratchet bar per box.

8RL- Adjustable clamp on ratchet bar enables lock to be used on doors up to 11/16" thick, can be used on glass, wood or metal doors. Packaging includes one lock and one ratchet bar per box.

7RL- Ideal security for all sliding glass doors, bookcases, display cases, etc. For doors up to 1/4" thick. Packaging includes one lock and one ratchet bar per box.



UTILITY TOOL BOX PLUNGER LOCK

ULR-1062STD*- Operation-Key turns 90°CW allowing spring-loaded plunger to be depressed for striking action. Plunger returns to starting position when pressure is released. Key is removable in locked and unlocked position. Regularly furnished with 3/4-24 mounting nut. Spring clip mounting available on request at no extra charge. Standard replacement for Contico, Delta Truck Body toolboxes, and Hudson GDC3088.



FLUSH MOUNT PLUNGER LOCK

ULR-1030FM*- Plunger Lock designed for by passing wood doors. Bright-nickel finish, 2 keys per lock (ES8), keyed alike or keyed different to same key changes as ESP Cam Locks. Includes nickel cup strike, 2 mounting screws. Replacement for Hudson G2139, Nat'l C8042. Codes Available: 217, 221, ES201, HL302



WOOD DESK LOCKS

Available keyed alike, keyed different and master keyed; the 750WDL, 875WDL, and 1125WDL can be ordered with the same key changes as ESP Cam Locks. All wood desk locks available in dull brass finish. Packaged complete with 2 mounting wood screws in a clear poly bag, 12 locks per carton, 2 keys per lock, ES8 keyway.

CODES AVAILABLE: ES201, ES202, ES203, ES204, C346A, C415A, KD

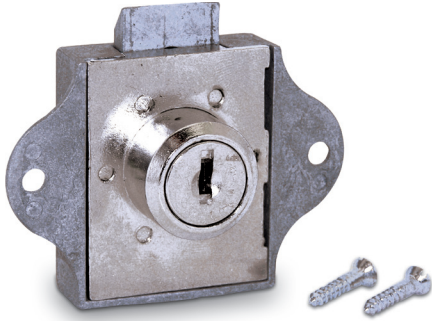
ULR-WL750	3/4"	barrel length, dull brass finish
ULR-WL875	7/8"	barrel length, dull brass finish
ULR-WL1125	1-1/8"	barrel length, dull brass finish
VWDL-C8703521	7/8"	barrel length, bright nickel finish

Operation: Key turns 180° clockwise, moving steel bolt upwards. Key removable in both locked and unlocked position.



VUT750WDL >





XW2833 SPRING BOLT

KEY CHANGEABLE CORES - Key code may be changed readily by removing central core with special change key.

CYLINDER - Die cast, 7/8" diameter. Cylinder nickel plate finish unless otherwise specified. Special finishes furnished on request.

OPERATION - 45 degree key turn. Key withdrawing in the locked position only.

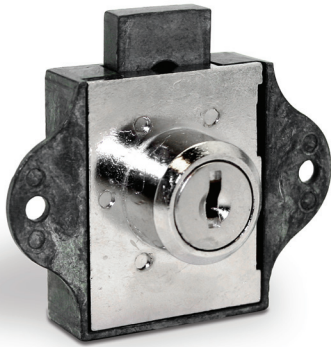
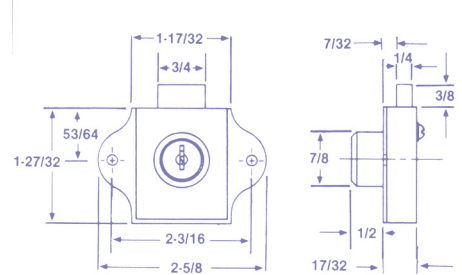
BOLT - 5/16" throw. Spring bolt.

MECHANISM - 5 disc tumblers

KEYS - Two single bitted brass keys per lock.

KEY CHANGES - Regularly furnished keyed alike. Keyed different available.

MASTER KEYED - Can be furnished with a number of different key changes master keyed.



XW2873 DEAD BOLT

KEY CHANGEABLE CORES - Key code may be changed readily by removing central core with special change key.

CYLINDER - Die cast, 7/8" diameter. Cylinder nickel plate finish unless otherwise specified. Special finishes furnished on request.

OPERATION - 180 degree key turn. Key withdrawing in both locked and unlocked positions.

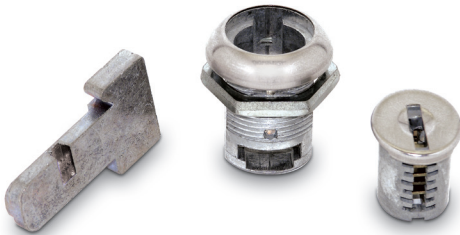
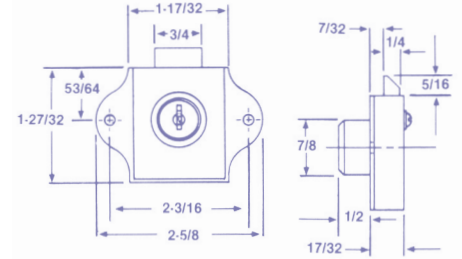
BOLT - 3/8" throw. Dead bolt.

MECHANISM - 5 disc tumblers

KEYS - Two single bitted brass keys per lock.

KEY CHANGES - Regularly furnished keyed alike. Keyed different available.

MASTER KEYED - Can be furnished with a number of different key changes master keyed.



METAL DESK DRAWER LOCKS

Available keyed alike, keyed different, and master keyed; the T585 can be ordered with the same key changes as ESP Cam Locks and Wood Desk Locks. Packaged 12 locks per carton. Uses ES-8 Keyway, 2 keys per lock. Operation: Key turns 180° clockwise moving T-bolt upwards. Key removable in both positions.

THUMB TURN LOCK

Here are three popular sized thumb turn locks, in bright nickel finish, conveniently packaged with the necessary parts to perform all locking functions! Thumb turn locks have threaded shells and come staked to a 90° rotation. Just apply the cam accordingly for any clockwise or counter-clockwise rotation. A spur washer is included for wood installation. Thumb turn locks are furnished with the following:

PART NUMBER WIDTH	DESCRIPTION
ULR-TT625STD (5/8")	Hex Nut
ULR-TT875STD (7/8")	Sem Screw
ULR-TT1125STD (1-1/8")	Straight Cam 1-1/4"
	Offset Cam 1-1/8" x 1/4" offset
	Super Washer
	1/8" Cylinder Ring



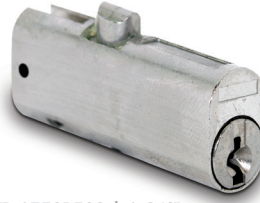
PUSH BUTTON FILE CABINET LOCKS



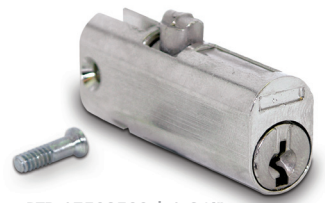
PTR-1750P312 | 1 3/4"
Rolling Pin Mounting ‡



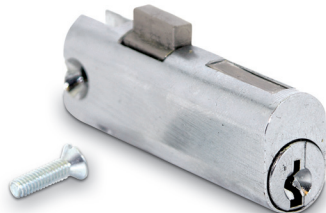
PTR-1750S312 | 1 3/4"
Machine Screw Mounting ‡



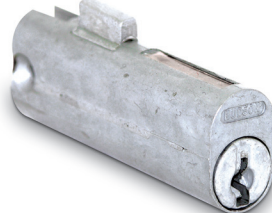
PTR-1750P500 | 1 3/4"
Rolling Pin Mounting ‡



PTR-1750S500 | 1 3/4"
Machine Screw Mounting ‡



PTR-2000S344 | 2"
Machine Screw Mounting ‡



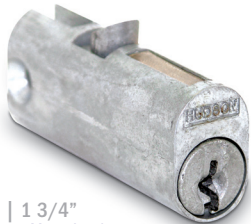
FC103 | 2"
Machine Screw Mounting ‡



FC5046 | 1 7/16"
Rear Mount Machine Screw Mounting ‡



FC6046 | 1 3/4"
Machine Screw Mounting ‡



FC6046B | 1 3/4"
Machine Screw Mounting ‡

Codes KA LL01-LL12 and KD 4 Pin Tumblers Cylinder

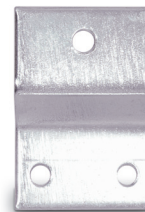
‡ Note: 312 series replacement for Hon Company. Equivalent to Chicago 5001LP

‡ Note: 500 series replacement for Anderson Hickey. Equivalent to Chicago 5001-50LP

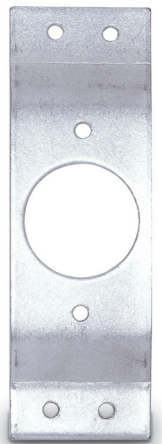
‡ Note: 344 replacement for Hon Company. Equivalent to Chicago 5002-LP

INSTALLATION TEMPLATE PLATES

Now you can install mortise locksets, cylindrical locksets, and tubular locksets on metal doors with a minimum of extra work. Whether on an old or new door, the ESP installation templates work every time! TLSINT-01 Designed to work on tubular and cylindrical locksets, such as Schlage, Arrow, Kwikset, Falcon, Weslock, etc. Sold 10 per box TLSINT-02 Comes in pairs and used for mortise locksets such as Welch, Yale, Corbin, Russwin, General, etc. Sold 10 pairs/box



TLSINT-01



TLSINT-02

AMARLITE LOCK REPLACEMENT

This lock is the only exact replacement for the original Amarlite Telescopic Bolt Lock that can be purchased as a regular stock item on a continual basis. Manufactured to the exact specifications of the Original Amarlite Lock, it allows for a rapid installation and eliminates all need for additional difficult and time consuming alterations to the door. Locks supplied less cylinders. Cylinder holes are threaded for the original Amarlite cylinder as well as any standard size mortise cylinders, and will work with various standard industry cams such as Ilco #4 narrow and Yale #6. ODDAL-77



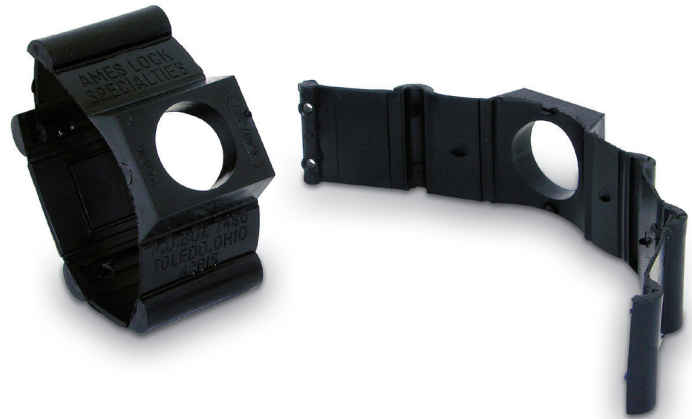
< ODDAL-77



Ames Door & Lock Support

Here's the answer you've been looking for to completely eliminate all collapsing and loosening problems when installing locks on hollow metal doors! The Ames Door & Lock Support is both flexible and adjustable thus assuring use for any locks requiring 2-1/8", 1-5/8" or 1-1/2" cross bores.

Part Number Width
 ODDA1346 (1-3/4")
 ODDA1386 (1-3/8")



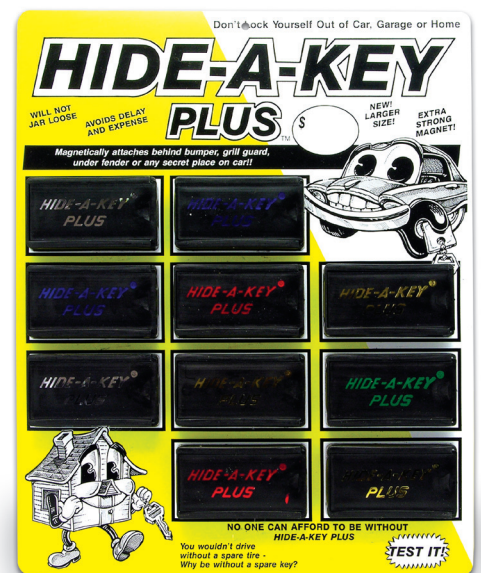
Some of the popular style locks the Ames Door & Lock Support can be used with include:

- Schlage 500 & 400 series
- Weslock
- Russwin
- Medeco
- Corbin
- Dexter
- Kwikset
- Weiser
- Sargent

Hide-A-Key



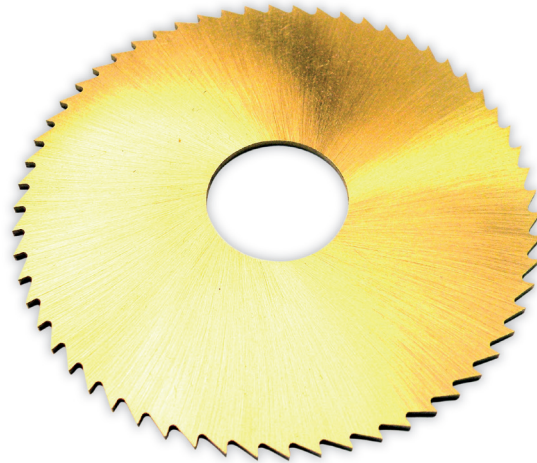
HAK1
 Includes 1 Magnetic Display Board
 and 12 Hide-A-Keys



HKP-21
 Includes Magnetic Display Board
 with 10 Hide-A-Key Pluses



Key Cutters



BW-CUTTER-SLOT



BW-CUTTER-65



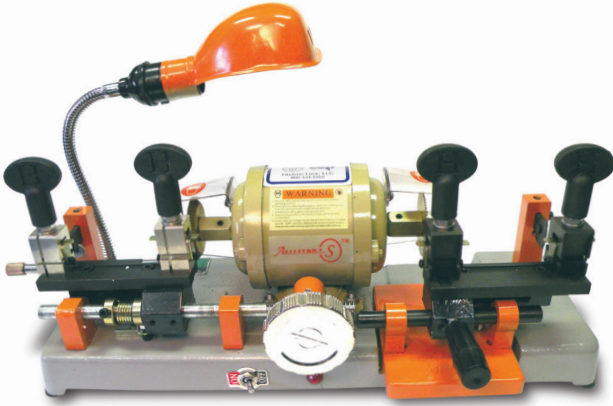
BW-CUTTER-200



BW-CUTTER-1300

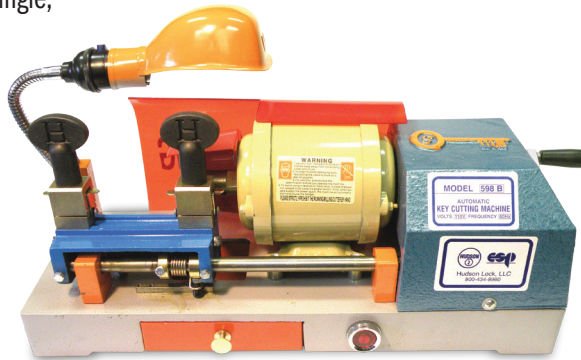


Key Cutting Machines



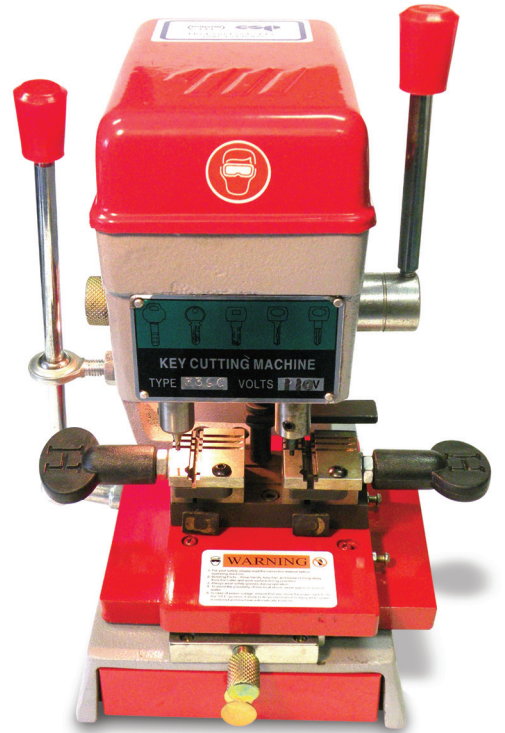
BW-238BS

Manual duplicating machine for single, double, bitted and flat steel keys.



BW-598B

Automated duplicator (with manual hard crank override). Cuts single and double bitted keys. Accommodates most large head Keys



BW-339C

Duplicates 4 and 8 track Sidewinder, Tubular, Dimple and Rod keys.

Cutting Bits



BW-CUTTER-339-2.5MM



BW-CUTTER-339-2MM



BW-CUTTER-339-SET



BW-CUTTER-339-4MM



BW-CUTTER-339-5MM



BW-CUTTER-339-3MM

Key Cutting Tracers



BW-TRACER-339-4MM-5MM



BW-TRACER-339-2MM-3MM



BW-TRACER-339-1.5MM-2.5MM

For a full list of key blanks, please visit us at www.HudsonLock.com. Click on ESP logo.

