

DON-JO MFG., INC.

ARCHITECTURAL HARDWARE & ACCESSORIES



Boston, Massachusetts

HINGES

DON-JO MFG., INC.
P.O. Box 929
Sterling, MA 01564

PHONE: 978.422.3377
FAX: 978.422.3467
WATS: 800.628.8389
WATS FAX: 800.278.8202

WEB: www.don-jo.com
E-mail: info@don-jo.com
Section K, Version 1



INDEX

Item#	Page#	Item#	Page#	Item#	Page#	Item#	Page#
BB74540.....	2k	HRP-1-LHR	6k	HWBB85045	3k	RPB73535-58	5k
BB74545.....	2k	HRP-1-RHR	6k	HWBB94545	3k	RPB74040-14	5k
BB84545.....	2k	HRP-2-LHR	6k	HWBB95045	3k	RPB74040-58	5k
BB94545.....	2k	HRP-2-RHR	6k	PB74540.....	2k	SH74545	3k
CP74545.....	4k	HWBB74545	3k	PB74545.....	2k	SH94545.....	3k
CP94545.....	4k	HWBB75045	3k	PB94545.....	2k		
ELECTRIC HINGE	4k	HWBB84545	3k	RPB73535-14	5k		



DON-JO HINGE CONVERSION CHART

DON-JO #	Bommer	Hager	Stanley	McKinney	PBB	ANSI
PB74540	5000	1279	F179	T2714	PB81	A8133
PB74545	5000	1279	F1979	T2714	PB81	A8133
PB94545	5002	1191	*F191	*T2314	PB51	A5133
BB74540	BB5000	BB1279	FBB179	TA2714	BB81	A8112
BB74545	BB5000	BB1279	FBB179	TA2714	BB81	A8112
BB84545	BB5001	BB1191	FBB191	TA2314	BB21	A2112
BB94545	BB5002	BB1191	*FBB191	*TA2314	BB51	A5112
SH74545	LB4310C	1250	2060	1502	SP81	K8107-1F
SH94545	LB4390C	1150	2060	1552		K51007-1F
HWBB74545	BB5004	BB1168	FBB168	T4A3786	4B81	A8111
HWBB84545	BB5005	BB1199	FBB199	T4A3386	4B21	A2111
HWBB94545	BB5006	BB1199	*FBB199	*T4A3386	4B51	A5111
HWBB75045	BB5004	BB1168	FBB168	T4A3786	4B81	A8111
HWBB85045	BB5005	BB1199	FBB199	T4A3386	4B21	A2111
HWBB95045	BB5006	BB1199	*FBB199	*T4A3386	4B51	A5111

*Use as a prefix to note Stainless Steel, 630

FINISH DESCRIPTIONS

BHMA Finish Code	U.S. Equivalent	Finish Description	Base Material
600	US P	Primed for Painting	Steel
626	US 26D	Satin Chrome Plated	Brass
630	US 32D	Satin Stainless Steel	Stainless Steel
632	US 3	Bright Brass Plated, Clear Coated	Steel
633	US 4	Satin Brass Plated, Clear Coated	Steel
639	US 10	Satin Bronze Plated, Clear Coated	Steel
640	US 10B	Satin Bronze Plated, Dark Anodized, Oil Rubbed	Steel
651	US 26	Bright Chrome Plated	Steel
652	US 26D	Satin Chrome Plated	Steel



FULL MORTISE PLAIN BEARING

Template Hinges – Standard Weight

For Medium Weight Doors/Low Frequency

All Hinges are ANSI Template



NUMBER	SIZE	GAUGE	ANSI	MATERIAL
PB74540	4 1/2" x 4"	.134	A8133	Steel
PB74545	4 1/2" x 4 1/2"	.134	A8133	Steel
PB94545	4 1/2" x 4 1/2"	.134	A5133	Stainless Steel

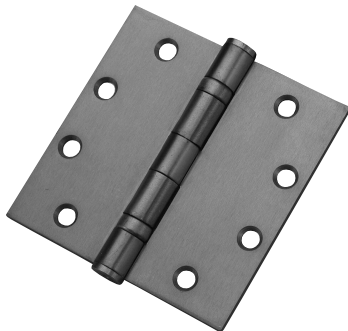
- SHELF PACK:** 3 hinges per box w/screws
24 hinges per case
- FASTENERS:** 8 ea. FHMS 12-24 x 1/2 (per hinge)
8 ea. FHWS 12 x 1 1/4 (per hinge)
- FEATURES:** 5 knuckle
- FINISHES:** (PB74540) 652
(PB74545) 600, 632, 633, 639, 640, 651, 652
(PB94545) 630
- OPTION:** Non-Removable Pin Available. Please specify NRP as a prefix

FULL MORTISE BALL BEARING

Template Hinges – Standard Weight

For Medium Weight Doors/Average Frequency

All Hinges are ANSI Template



NUMBER	SIZE	GAUGE	ANSI	MATERIAL
BB74540	4 1/2" x 4"	.134	A8112	Steel
BB74545	4 1/2" x 4 1/2"	.134	A8112	Steel
BB84545	4 1/2" x 4 1/2"	.134	A2112	Brass
BB94545	4 1/2" x 4 1/2"	.134	A5112	Stainless Steel

- SHELF PACK:** 3 hinges per box w/screws
24 hinges per case
- FASTENERS:** 8 ea. FHMS 12-24 x 1/2 (per hinge)
8 ea. FHWS 12-24 x 1 1/4 (per hinge)
- FEATURES:** 5 knuckle
- FINISHES:** (BB74540) 652
(BB74545) 600, 632, 633, 639, 640, 651, 652
(BB84545) 626
(BB94545) 630
- OPTION:** Non-Removable Pin Available. Please specify NRP as a prefix when ordering (i.e. NRPBB74545-652)

Don-Jo Mfg. template hinges are manufactured to close tolerances and meet all specifications and requirements set by the American National Standards Institute (ANSI)



FULL MORTISE BALL BEARING

Template Hinges – Heavy Weight

For Heavy Doors/High Frequency

All Hinges are ANSI Template



NUMBER	SIZE	GAUGE	ANSI	MATERIAL
HWBB74545	4 1/2" x 4 1/2"	.180	A8111	Steel
HWBB84545	4 1/2" x 4 1/2"	.180	A2111	Brass
HWBB94545	4 1/2" x 4 1/2"	.180	A5111	Stainless Steel
HWBB75045	5" x 4 1/2"	.190	A8111	Steel
HWBB85045	5" x 4 1/2"	.190	A2111	Brass
HWBB95045	5" x 4 1/2"	.190	A5111	Stainless Steel

SHELF PACK: 3 hinges per box w/screws
24 hinges per case

Box Pack

FASTENERS: 8 ea. FHMS 12-24 x 1/2 (per hinge)
8 ea. FHWS 12 x 1 1/4 (per hinge)

FEATURES:

- All Heavyweight hinges come with Non-Removable Pin (NRP) as standard
- 4 ball bearings
- 5 knuckle

FINISHES: (HWBB74545, HWBB75045) 632, 633, 640, 651, 652
(HWBB84545, HWBB85045) 626
(HWBB94545, HWBB95045) 630

FULL MORTISE SPRING HINGE

Template Hinges – Standard Weight

All Hinges are ANSI Template



NUMBER	SIZE	GAUGE	ANSI	MATERIAL
SH74545	4 1/2" x 4 1/2"	.134	K81071F	Steel
SH94545	4 1/2" x 4 1/2"	.134	K51071F	Stainless Steel

SHELF PACK: 2 hinges per box w/screws
20 hinges per case

Box Pack

FASTENERS: 8 ea. FHMS 12-24 x 1/2 (per hinge)
8 ea. FHWS 12 x 1 1/4 (per hinge)

FEATURES:

-  Listed - Grade I
- Single acting
- Self lubricating bearings
- Easy spring tension adjustment
- Non-handed

FINISHES: (SH74545) 600, 632, 633, 640, 651, 652
(SH94545) 630

Don-Jo Mfg. template hinges are manufactured to close tolerances and meet all specifications and requirements set by the American National Standards Institute (ANSI)



DON-JO MFG., INC.

COMBO PACK

2 Spring Hinges - 1 Ball Bearing Hinge
 All Hinges are ANSI Template

NUMBER	SIZE	GAUGE	ANSI	MATERIAL
CP74545	4 1/2" x 4 1/2"	.134	K81071F (Spring) A8112 (Ball Bearing)	Steel
CP94545	4 1/2" x 4 1/2"	.134	K51071F (Spring) A5112 (Ball Bearing)	Stainless Steel



- SHELF PACK:** 3 hinges per box w/screws
 36 hinges per case
- FASTENERS:** 8 ea. FHMS 12-24 x 1/2 (per hinge)
 8 ea. FHWS 12 x 1 1/4 (per hinge)
- FINISHES:** (CP74545) 600, 632, 633, 640, 651, 652
 (CP94545) 630
- NFPA 80 recommends the use of a Ball Bearing Hinge with Spring Hinges

ELECTRIFIED HINGES

- SHELF PACK:** 1
- Box Pack**
- FEATURES:**
- UL Listed
 - Rated 3.5 amps
 - NRP provided w/all wired hinges
 - Templates available
 - 12" lead on one leaf, 36" lead on the other leaf!
 - 28 gauge wire
 - 20 gauge wire for 2 wire hinges
- FINISHES:** 600, 632, 633, 639, 640, 651, 652
- OPTIONS:**
- Available w/ 2, 4, 6, 8, 10 & 12 wires
 - Longer leads available upon request
 - Concealed electronic monitor available
 - 7" mortar guard
- HOW TO ORDER:** Specify: Number of wires, type of hinge and finish
 Example: E4W-BB74545-652





RESIDENTIAL HINGES



RPB73535-58 (Shown)
RPB73535-14

NUMBER	SIZE	RADIUS	GAUGE	MATERIAL
RPB73535-58	3 1/2" x 3 1/2"	5/8"	.085	Steel
RPB73535-14	3 1/2" x 3 1/2"	1/4"	.085	Steel

SHELF PACK: 2 per box / **CASE:** 50 pcs. **Box Pack**
FASTENERS: Screws: #9 x 3/4" flat head Phillips
FINISHES: 632, 633, 640, 646, 647, 651, 652
OPTION: Square corner available per special order

RESIDENTIAL HINGES



RPB74040-58
RPB74040-14 (Shown)

NUMBER	SIZE	RADIUS	GAUGE	MATERIAL
RPB74040-58	4" x 4"	5/8"	.097	Steel
RPB74040-14	4" x 4"	1/4"	.097	Steel

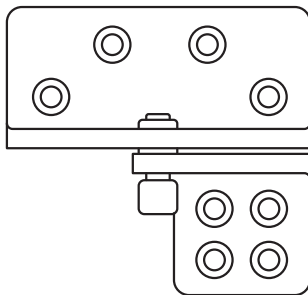
SHELF PACK: 2 per box / **CASE:** 50 pcs. **Box Pack**
FASTENERS: Screws: #9 x 1" flat head Phillips
FINISHES: 632, 633, 640, 646, 647, 651, 652
OPTION: Square corner available per special order

Don-Jo Mfg. template hinges are manufactured to close tolerances and meet all specifications and requirements set by the American National Standards Institute (ANSI)



HINGE REINFORCING PIVOT _____

NUMBER	SIZE	PIVOT OFFSET	HINGE SIZE	MATERIAL
HRP-1-LHR	Frame: 1 11/16" x 3 5/8" Door: 1 11/16" x 1 11/16"	3/4"	4 1/2" x 4 1/2" 5" x 4 1/2"	Steel
HRP-1-RHR	Frame: 1 11/16" x 3 5/8" Door: 1 11/16" x 1 11/16"	3/4"	4 1/2" x 4 1/2" 5" x 4 1/2"	Steel
HRP-2-LHR	Frame: 1 11/16" x 3 5/8" Door: 1 11/16" x 1 11/16"	1/2"	4" x 4" 4 1/2" x 4" / 5" x 4 1/2"	Steel
HRP-2-RHR	Frame: 1 11/16" x 3 5/8" Door: 1 11/16" x 1 11/16"	1/2"	4" x 4" 4 1/2" x 4" / 5" x 4 1/2"	Steel



SHELF PACK: 1 **Box Pack**
FASTENERS: 8 ea. 1/4-20 x 3/4" FHMS
 8 ea. #14 x 1 1/4" FHWS
 2 ea. Sex nuts
FEATURE: Helps to repair and prevent sagging doors
FINISH: 626

HRP-1-LHR
HRP-1-RHR
HRP-2-LHR
HRP-2-RHR