

MONTEREY

BI-FOLDING GLASS WALL SYSTEM

Manufactured By U.S. ALUMINUM

Cat. No. **MO5580**



Transform an Ordinary Space into
the Extraordinary with the New

MONTEREYTM
Bi-Folding Glass Wall System
INTERIOR AND EXTERIOR APPLICATIONS



C.R. LAURENCE COMPANY

Worldwide Manufacturer and Supplier
Glazing, Architectural, Railing, Screen, Construction, Industrial, and Automotive Supplies

crlaurence.com
usalum.com
crl-arch.com

MONTEREY BI-FOLDING GLASS WALL SYSTEM



COMMERCIAL APPLICATIONS

Hotels | Resorts | Restaurants | Sports Venues
Malls | Casinos | Spas | Banquet Halls | Banks
Offices | Wineries | Airports

RESIDENTIAL APPLICATIONS:

Patios | Balconies | Exercise Rooms | Sunrooms

CRL/U.S. Aluminum Monterey Bi-Folding Door and Wall Systems are an effective way to maximize the available space in residential or commercial properties, while maintaining aesthetic appeal by creating a stunning space with brilliant transparency. The Monterey allows you to bring the outdoors in while providing resistance to undesirable weather conditions. Countless options are available to create large living or functional spaces that seamlessly transition outdoors to indoors.

Our precision engineered components provide a system that slides smoothly with minimal effort while supporting multiple panels in a single opening. The Monterey Series provides security with two point interior lever latch as standard, with three point keyed locks available on some configurations.

Every Monterey System produced must meet strict quality assurance standards and testing to ensure they meet or exceed cycle

testing, water, air or sound infiltration requirements for residential and commercial applications.

The Monterey Systems have also met or surpassed UK building codes and testing. Test reports are available on request.

	S55	S55R	S80	S80R
Available in Five Standard Finishes	Yes	Yes	Yes	Yes
Custom Finishes Available	Yes	Yes	Yes	Yes
Bi-Color Profiles	Yes	Yes	Yes	Yes
Thermally Broken	No	No	Yes	Yes
Top Hung Easy Glide Rollers	Yes	Yes	Yes	Yes
Monolithic-1/4", 3/8" or 1/2"; Insulating 1"	Yes	Yes	No	No
Insulating Units 1" and 1-1/4"	No	No	Yes	Yes
Maximum Leaf Width	39"	39"	39"	39"
Maximum Weight	100Lbs	154Lbs	100Lbs	154Lbs
Maximum Height Interior	13'-6"	13'-6"	13'-6"	13'-6"
Maximum Height Exterior	10'-6"	10'-6"	10'-6"	10'-6"
2 Point Lever Latch	Yes	Yes	Yes	Yes
3 Point Keyed Lock	Yes	Yes	Yes	Yes
NFRC Rated*	*	*	*	*
Raised Sill	Yes	Yes	Yes	Yes
Flush Mount Sill	Yes	Yes	Yes	Yes

* Contact CRL Technical Sales Representative for current details



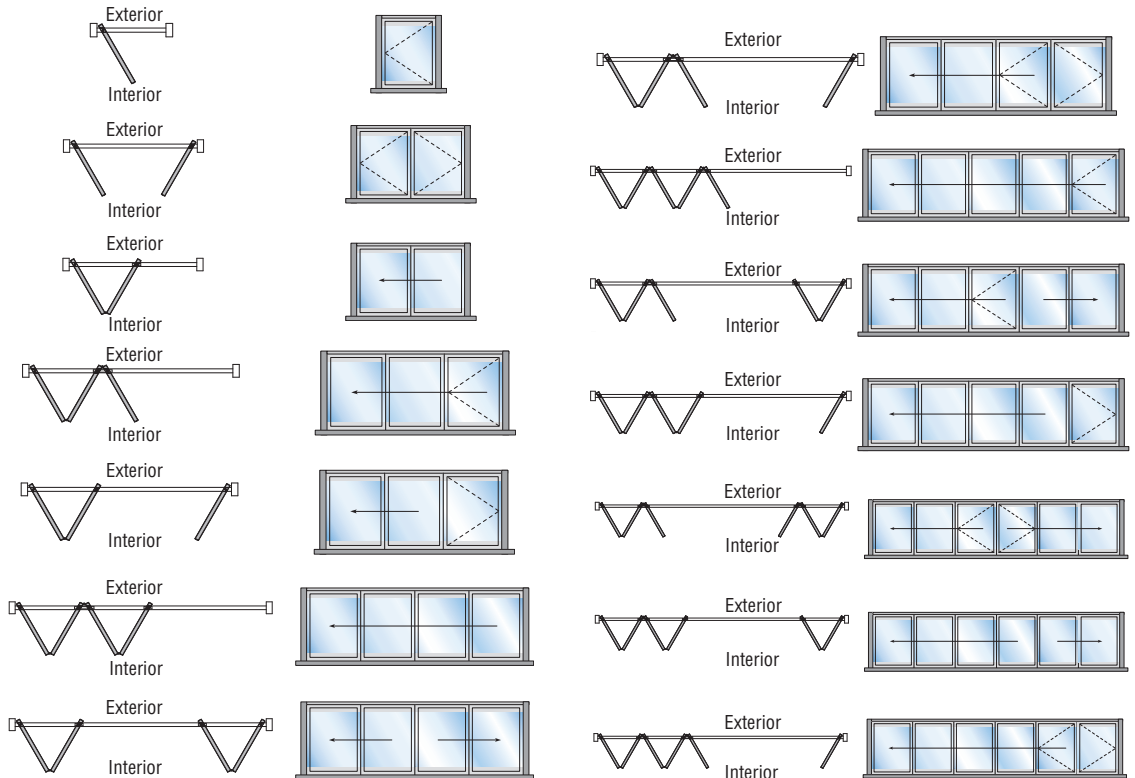
STANDARD CONFIGURATIONS



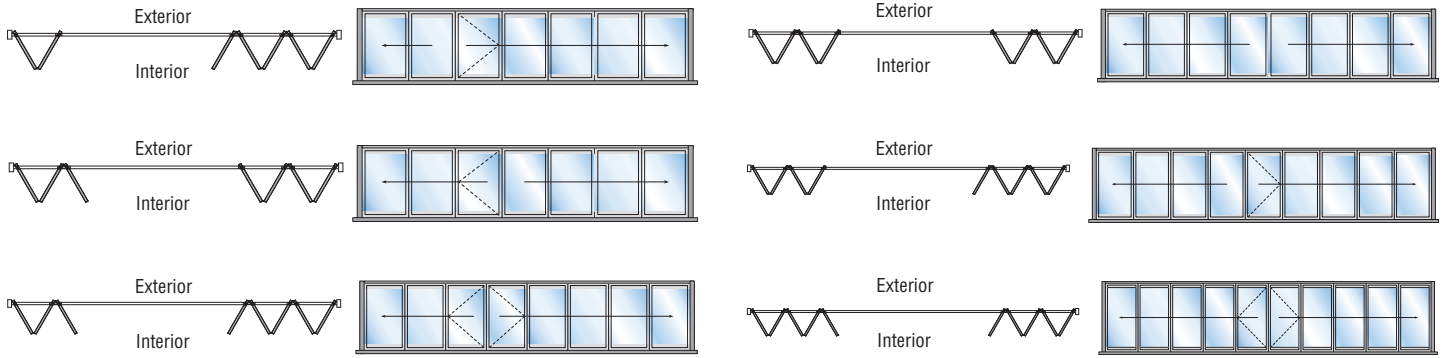
The CRL Monterey Bi-Folding Door and Wall System Series is available in over fifty configurations with inward or outward openings. Access from the exterior is made easy by attaching a locking swing panel to the jamb or to the end of a chain of bi-folding panels. You also have a choice of panels, all folding left, right, or bi-parting.

The following diagrams show the most common inward opening configurations with most panels folding to the left. The mirror image is also available with panels folding to the right. All configurations shown can also be ordered with outward opening.

Large configurations can be broken into multiple panel groupings for ease of operation, to create wider openings, or for additional functionality, such as partial opening or intermediate foot traffic control.



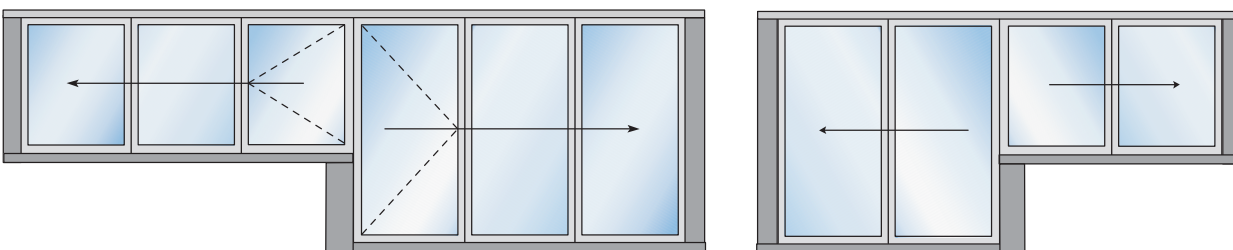
■ ■ ■ MORE STANDARD CONFIGURATIONS



■ ■ ■ WINDOW AND DOOR COMBINATIONS



Monterey Bi-Folding Systems make excellent windows that can be used in combination with doors to create amazing use of space. Some limitations apply; consult a CRL Technical Sales Representative for more information.



Possible combinations with select systems and certain configurations.

MONTEREY BI-FOLDING GLASS WALL SYSTEM - OVERVIEW



Monterey S55



Monterey S80

- Top Hung Panels Glide Smoothly and Easily With Minimal Effort
- Versatile Pivoting Panel Option
- Weather Resistant, Designed for Interior and Exterior Use
- Inward or Outward Stacking Positions Available
- Certain Models Available With 3 Point Keyed Locking System
- Flush Mount or Raised Sill Options

Monterey S55

A contemporary way to maximize the available space in residential or commercial properties without limiting design options. The Monterey can be installed for interior or exterior use, opening either inwards or outwards. Interior applications come standard with flush mount sills whereas raised sills are supplied standard for exterior use. Flush sill option at exterior requires additional water management such as a trench drain (supplied by others) in front of the entire opening.

All systems are top hung and include a compensating frame and adjustable spacers to help overcome openings that are not level or plumb. Available in five standard colors and in custom finishes upon request.

Taller openings are easily handled by our **S55R** Series that incorporates a vertical mullion at each roller joint, allowing for additional rollers to help carry the weight of the door.

Monterey S80 and S80R

All the same great features as the S55 plus thermally broken for extreme weather conditions and long term performance. Specifically engineered to satisfy the increasing demands for energy conservation. The high quality materials used and precision manufacturing of the system provides smooth operation of the panels with minimal effort.

All systems are top hung, and have a comprehensive seal configuration creating an exceptional weather-sealed system. Available in five standard colors and in custom finishes upon request.

Taller openings are easily handled by our **S80R** Series that incorporates a vertical mullion at each roller joint, allowing for additional rollers to help carry the weight of the door.

- Thermally Broken, Constructed for Extreme Weather Conditions
- Top Hung Panels Glide Smoothly and Easily With Minimal Effort
- Inward or Outward Stacking Positions Available
- Certain Models Available With Three Point Keyed Locking System



MONTEREY S55 SERIES



- Swing Door Option for Easy Access
- Fully Assembled With or Without Glazing
- Five Finishes in Stock; Hundreds More Available on Special Order
- New Construction or Retrofit

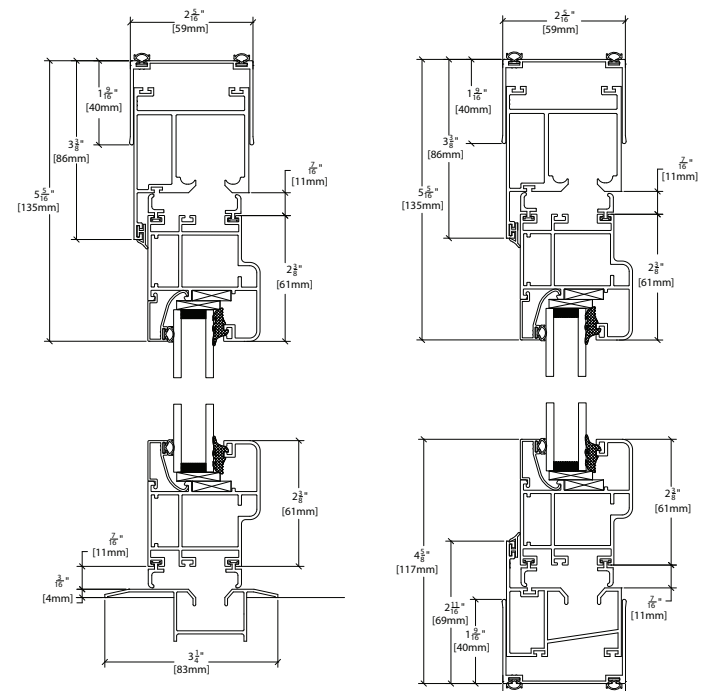
The **Monterey S55 Series** accommodates 1/4", 3/8" or 1/2" (6, 10, or 12 mm) monolithic or 1" (25mm) insulating glazing. Panels come standard with interior two point lever latches, and have an option for three point keyed locks for added security and access from the exterior.

Each unit includes all the necessary hardware for a complete installation; you just supply the glass, or if you prefer, ask CRL to supply as fully glazed. Compensating channels come standard to ensure a plumb and level installation.

The S55 system is very easy to install and user friendly to operate. Complete installation instructions come with every unit, as well as end user care and maintenance instructions to ensure years of reliable service.

Standard finishes are white, black, or wood grain powder coat, and satin or black bronze anodized. Standard RAL color powder coat finishes, as well as custom Kynar® finishes, are available on special order.

Monterey S55 Series Typical Vertical Section



S55 System with Flush Sill

S55 System with Raised Sill



Top Roller



Hinge



Flush Sill



Raised Sill

MONTEREY S55R SERIES



The **Monterey S55R Series** allows for taller monumental doors. Similar to the S55 Series, the S55R utilizes an additional vertical mullion between panels at every roller joint to allow for extra rollers to carry the increased weight of the door.



Top



Bottom

MONTEREY S80 SERIES

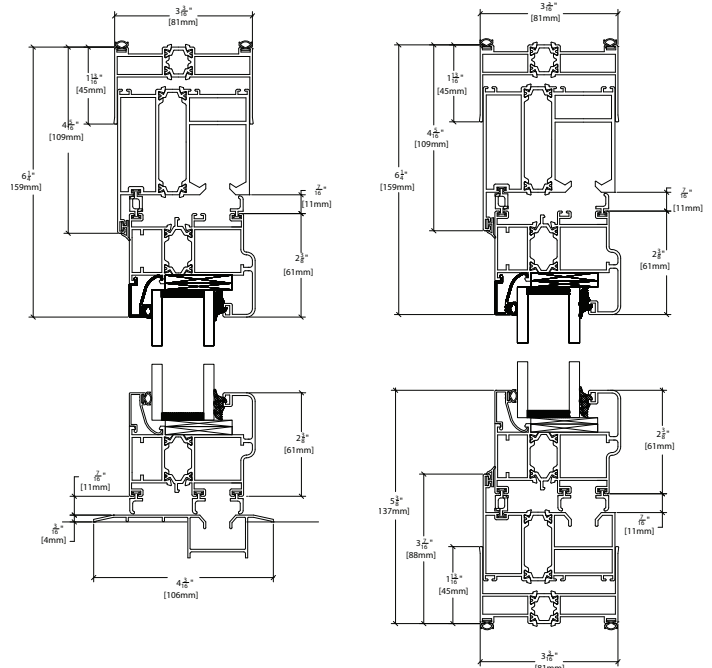
- Thermally Broken
- Flexibility to Fully or Partially Open
- Fully Assembled With or Without Glazing
- Almost Seamless Transition

Monterey S80 Series accommodates 1" or 1-1/4" (25 or 32 mm) insulating glazing. All extrusions are thermally broken for superior thermal performance. Each unit includes all the necessary hardware for a complete installation; you just supply the glass, or if you prefer, ask CRL to supply as fully glazed. Panels come standard with interior two point lever latches and have an option for three point keyed locks for added security and access from the exterior.

The S80 system comes standard with compensating channels to ensure a plumb and level installation. Complete installation instructions come with every unit as well as end user care and maintenance instructions to ensure years of reliable service.

Standard finishes available are white, black, or wood grain powder coat, and satin or black bronze anodized. Standard RAL color powder coat finishes, as well as custom Kynar® finishes, are available on special order.

Monterey S80 Series Typical Vertical Section



S80 System with Flush Sill

S80 System with Raised Sill



Top Roller



Hinge



Flush Sill



Raised Sill

MONTEREY S80R SERIES



Monterey S80R Reinforced Series

Allows for taller monumental doors. Similar to the S80 Series, the S80R utilizes an additional vertical mullion between panels at every roller joint to allow for extra rollers to carry the increased weight of the door.



Top



Bottom

MORE FROM CRL

CRL Specialty Catalogs - Can be ordered, viewed or downloaded online at crlaurence.com



Doors and Entrance Systems
CRL14D



Door Controls Hardware and Accessories
DC14



Architectural Hardware
AH11



Architectural Metals
AM09



Architectural Railing Systems
HR11



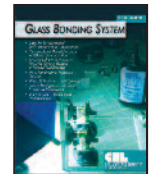
Transaction and Security Hardware
TH10



Hospitality and Service Hardware
HS12



Frameless Shower Door Hardware
SD12



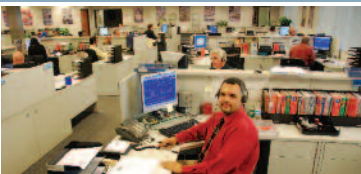
Glass Bonding System
GB10

VISIT THE WORLD of crlaurence.com



- Access to All CRL Products Through CRL's Comprehensive Product Index
- View All Current CRL Catalogs Online • New CRL Products and Services
- Technical Articles and Product Support • Ordering and Shipping Information
- Help in Using the Site • A Calendar of Industry Trade Shows
- CRL Locations with Addresses, Directions, Phone, and Fax Numbers
- Direct E-Mail Connections to CRL Departments • Account Policies and Credit Terms

Technical Sales Department for All Your Project Requirements



C.R. Laurence Company has a Technical Sales Department to assist with design plans and installation questions concerning Commercial Hardware. Your job can be made easier with the help of CRL's Technical Sales Representatives who are trained in the newest Hardware Systems, and can offer you detailed diagrams and layout sheets. Ask for Extension **7700**.