

# Split Decision?



The ORIGINAL  
Aerosol  
Brake Parts  
Cleaner

40+ Years of  
Leadership

Offered in 5 Unique  
Formulations to  
Meet EPA and State  
Regulations

CRC Brakleen®  
Formulas  
DO NOT Contain  
Methylene Chloride



**40+ YEARS**

**SINCE 1971**

Degreases Instantly  
Cleans Fast • Dries Fast  
Leaves No Residue  
Removes Brake Fluid,  
Grease & Oil

Desengrasa instantáneamente  
Limpia rápido • Se seca rápido  
No deja residuo  
Remueve líquido de frenos, grasa y aceite



SCAN CODE  
FOR MORE INFO

**DANGER:** VAPOR HARMFUL. CONTENTS UNDER PRESSURE.  
READ WARNINGS ON BACK PANEL.

**PELIGRO:** VAPOR NOCIVO. CONTENIDO BAJO PRESIÓN.  
LEA LAS ADVERTENCIAS EN EL DORSO.

Net Wt. 1 lb. 3 oz. (539 g) No. 05089

**CRC**  
**Brakleen®**  
Brake Parts Cleaner  
Limpiador de partes de frenos



**NON-CHLORINATED**  
**SIN CLORO**

Cleans Fast • Dries Fast  
Leaves No Residue  
Removes Brake Fluid,  
Grease & Oil

Limpia rápido • Se seca rápido  
No deja residuo  
Remueve líquido de frenos, grasa y aceite



SCAN CODE  
FOR MORE INFO

**DANGER:** EXTREMELY FLAMMABLE. HARMFUL OR FATAL  
IF SWALLOWED. MAY CAUSE BLINDNESS IF SWALLOWED.  
VAPOR HARMFUL. EYE AND SKIN IRRITANT. CONTENTS  
UNDER PRESSURE. READ WARNINGS ON BACK PANEL.

**PELIGRO:** EXTREMADAMENTE INFLAMABLE. NOCIVO  
O FATAL SI SE INGIERE. PUEDE CAUSAR CEGUERA SI SE  
INGIERE. VAPOR NOCIVO. IRRITA LA PIEL Y LOS OJOS.  
CONTENIDO BAJO PRESIÓN. LEA LAS ADVERTENCIAS EN EL DORSO.

Net Wt. 14 oz. (397 g) No. 05088



SCAN WITH SMARTPHONE

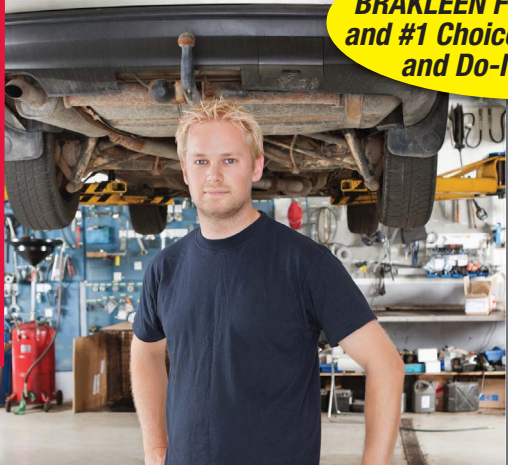
[www.crcbrakleen.com](http://www.crcbrakleen.com)  
[www.crcindustries.com](http://www.crcindustries.com)



# Choosing Your CRC Brākleen®

I want the Strongest, Most Effective brake parts cleaner. I need a Non-Flammable cleaner with superior cleaning performance to do the job right the first time... fast.

The Strongest BRAKLEEN Formula Available and #1 Choice of Professionals and Do-It-Yourselfers



OK FOR CHLORINATED

## Brākleen® Non-Flammable Brake Parts Cleaner

The original BRAKLEEN – our strongest formula! Chlorinated formula quickly removes brake dust, brake fluid, grease and other contaminants from all types of brake systems including ABS. Superior cleaning and fast evaporation. Leaves no residue.

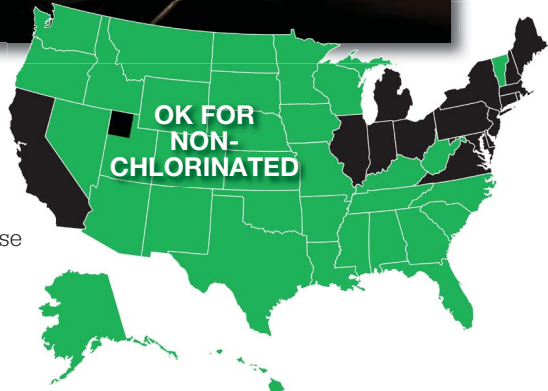
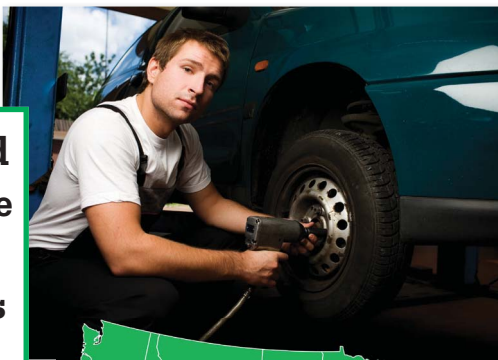


05089	19 oz.	12/cs
05089T	19 oz.	12/cs
05090	1 gallon	4/cs
05091	5 gallon	1
05093	55 gallon	1

CRC BRAKLEEN Formulas DO NOT Contain Methylene Chloride



I need a Non-Chlorinated brake parts cleaner. I want the Strongest non-chlorinated formula that meets my state's regulations. Cleaning Performance is a priority.



OK FOR NON-CHLORINATED

## Brākleen® Non-Chlorinated Brake Parts Cleaner▲

Superior cleaning and quick dry time. Leaves no residue. Use where compliance calls for a chlorine-free product.

05088	14 oz.	12/cs
05085	1 gallon	4/cs
05087	55 gallon	1
05186	5 gallon	1

▲This product is very flammable. Do not apply while equipment is energized.

Beginning in 1971 with industry leader BRAKLEEN, the ORIGINAL aerosol brake parts cleaner, CRC has earned its reputation as "The Brake Experts." BRAKLEEN was the very first product of its kind, and for over 40 years, hundreds of thousands of technicians and Do-It-Yourselfers have relied on BRAKLEEN and CRC products for fast and effective automotive service solutions.

# It's What's Inside That Counts



**50-STATE FORMULA**

**I need a Non-Chlorinated brake parts cleaner. I want one product that can be used and sold in all my auto parts stores across the US.**



**Brakleen® Non-Chlorinated Brake Parts Cleaner▲**  
**50-State Formula with PowerJet® Technology**

The strongest 50-state formula available. PowerJet® technology provides a more powerful spray which blasts away brake dust, brake fluid, grease and oil while using less product and taking less time to clean.

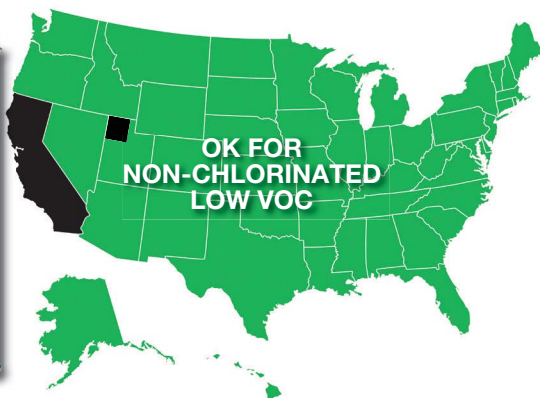
05050	14 oz.	12/cs
05051	1 gallon	4/cs
05052	5 gallon	1
05053	55 gallon	1
05054	14 oz.	12/cs



**Brakleen® Non-Chlorinated Low VOC Brake Parts Cleaner▲**

Use where compliance calls for a low VOC and chlorine-free product.

05084	14 oz.	12/cs
05086	5 gallon	1



**I need a Non-Chlorinated Low VOC brake parts cleaner. I want lower waste oil recycling costs.**



**I need a Non-Chlorinated Ultra Low VOC brake parts cleaner that meets the requirements of California's South Coast Air Quality Management District.**



**Brakleen® Non-Chlorinated Ultra Low VOC Brake Parts Cleaner▲**

Formulated for SCAQMD Rule 1171 (South Coast California).

05151	14 oz.	12/cs
-------	--------	-------



▲This product is very flammable. Do not apply while equipment is energized.

Questions about product compliance? Visit [www.crcindustries.com](http://www.crcindustries.com) or call 800-307-8971 for the most current product compliance info by state. As one of the world's leading manufacturers of chemical maintenance products, CRC has made a commitment to provide the best solutions for our customers. We can help you meet the challenges of today's highly regulated environment. CRC diligently monitors all regulatory developments regarding VOCs, chlorinated solvents, and other important issues affecting our products and our customers.

## Brake Parts Cleaner FAQ

### Can I use soap & water for brake parts cleaning?

Soap and water are only suitable for one step in a brake job: to remove the shavings from rotor turn operations. Grease and grime build-up needs to be removed with a solvent-based product. In addition, soap and water is not readily available in a shop environment.

### Why do some brake parts cleaner brands claim that their products have a higher fluid content vs net weight? Does that mean they contain more product?

Different brands of brake parts cleaners contain different propellants. For example, Propane is filled as a liquid (mLs) versus the CO<sub>2</sub> propellant in CRC BRAKLEEN which is measured by weight. Comparing liquid content to net weight really is irrelevant. What really matters is how well the product performs. It's not an advantage to have more of a product that doesn't work or takes twice as much product and time to do the job.

### Is Methylene Chloride a paint stripper?

Yes, it is. CRC BRAKLEEN formulas DO NOT contain Methylene Chloride. Use of a brake parts cleaner containing Methylene Chloride could increase the likelihood of damage to automotive finishes.

Do YOU have a question about BRAKLEEN or other CRC brake maintenance products?  
Tech Line: 800-521-3168  
VOC Information: 800-307-8971  
Customer Service: 800-272-8963  
[www.crcindustries.com](http://www.crcindustries.com)

## Step-By-Step Instructions for a Complete Brake Job Using CRC Brake Maintenance Products

**General Installation Tips:** Always service and/or replace brake parts in axle sets. Always replace or resurface both rotors/drums. (Note: To remove anti-rust coating on new rotors, use BRAKLEEN.) Resurface to a smooth non-directional finish. Wash the rotors after resurfacing with BRAKLEEN. Thoroughly check all caliper bushings and replace if necessary. Thoroughly clean or replace all caliper hardware. Check rear pads or shoes and replace if necessary. Check the brake fluid and add or replace according to the manufacturer's specifications for the vehicle. Always tighten the wheel lugs in a five star pattern according to manufacturer's recommended torque specifications. Always check all four tires for proper air pressure and wear. All ABS service work should be completed by an ASEcertified mechanic.



**Step 1:** Remove lug nuts and wheel. If having difficulty, spray with CRC FREEZE-OFF® Super Penetrant first. Turn wheel to expose caliper assembly and inspect for cracks or damage.



**Step 2:** With brake assembly exposed, spray CRC BRAKLEEN® in short bursts at a distance of 18-24 inches to clear brake dust and road grime making visual inspection easier.

**Step 3:** Remove caliper bolts and assembly. Set assembly aside be careful not to kink the brake line hose. *Tip: While removing bolts and hardware collect all parts in a basin/pan and spray with BRAKLEEN to remove dust, dirt and grime before re-assembly.*

**Step 4:** Reset (push back) brake caliper pistons to allow room for new brake pads. Set assembly aside.

**Step 5:** Remove caliper bracket assembly and slide pins.



Spray caliper bolts, slide pins and bracket hardware with CRC BRAKLEEN® and wipe clean with a shop rag.



**Step 6:** Remove brake rotor screw(s). If screw is difficult to remove, spray with CRC FREEZE-OFF®.

**Step 7:** Prior to removing rotor, spray all contact points with CRC ULTRA SCREWLOOSE® Super Penetrant or CRC FREEZE-OFF for easy removal.

**Step 8:** Install new or turned rotor. Be sure to clean rotor with CRC BRAKLEEN prior to installation to remove protective oil used in packaging. If installing turned/cut rotor, clean with CRC BRAKLEEN to remove all residue and metal shavings from the lathe.

**Step 9:** Replace caliper bracket. Apply a thin film of CRC NUT LOCK THREADLOCKER to the caliper bolts prior to installation.

**Step 10:** Apply CRC DISC BRAKE QUIET to the back of the new pads to prevent noise. For shimmed pads use CRC SYNTHETIC BRAKE & CALIPER GREASE. For high performance or racing applications use CRC SILARAMIC® Brake System Grease.

**Step 11:** Spray rotor and friction surface of pads with CRC DE-SQUEAK Brake Conditioning Treatment to fill grooves in friction surfaces for smoother braking. Install brake pads.



**Step 12:** Reassemble caliper assembly. Lubricate all metal-to-metal contact points and slide pins with CRC SYNTHETIC BRAKE & CALIPER GREASE.



**Step 13:** Before reinstalling wheel, spray studs or bolts with a light coating of CRC POWER LUBE® Multi-Purpose Lubricant to protect from corrosion. Replace wheel and tighten bolts.