

WATER MANAGEMENT PRODUCTS

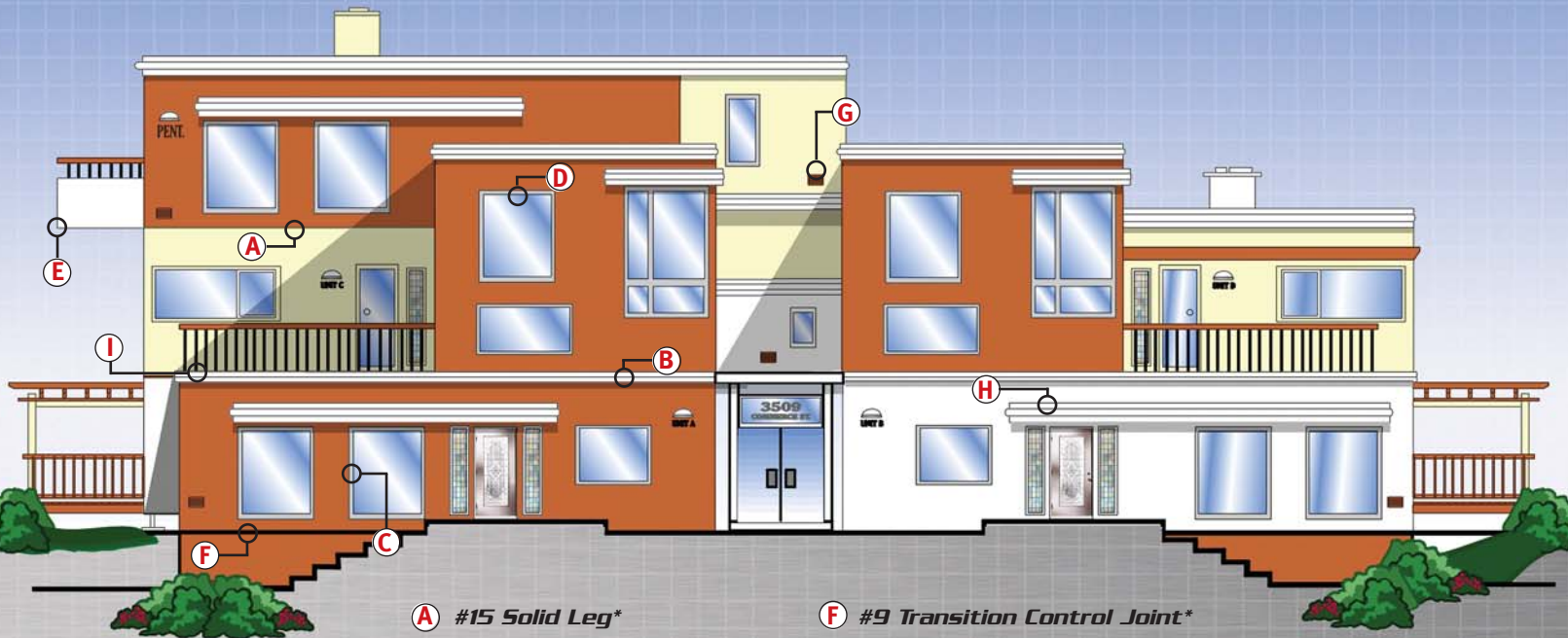


www.cemcosteel.com



ALSO AVAILABLE IN
Copper





- | | |
|------------------------------------|---------------------------------------|
| A #15 Solid Leg* | F #9 Transition Control Joint* |
| B M-Slide Expansion Joint™* | G #6 Drip Head |
| C J-Series Casing Bead | H #17 Base Flashing* |
| D #3 Flashing Screed* | I #7 Extended* |
| E #12 Soffit Drip Edge | |

* PATENT PENDING

The need for water management in stucco assemblies has become a major concern among contractors and architects. Cemco has decided to take an active role in assisting the construction industry by introducing water management stucco accessories.

Each new accessory will have a dual function. First as a stucco ground to maintain the proper thickness and second as a flashing to divert water away from the water resistant barrier this was achieved by extending the width of the attachment leg and removing the perforated nailing holes.

Cemco will also address the issue of stucco accessory corrosion resistance by manufacturing the water management accessories in 25 ga. materials with a G-90 galvanized coating.

When the Cemco water management line of accessories is completed in late '07 there will be 9 new products to choose from. Each new product will come with an illustration describing the most common usage for commercial and residential construction.

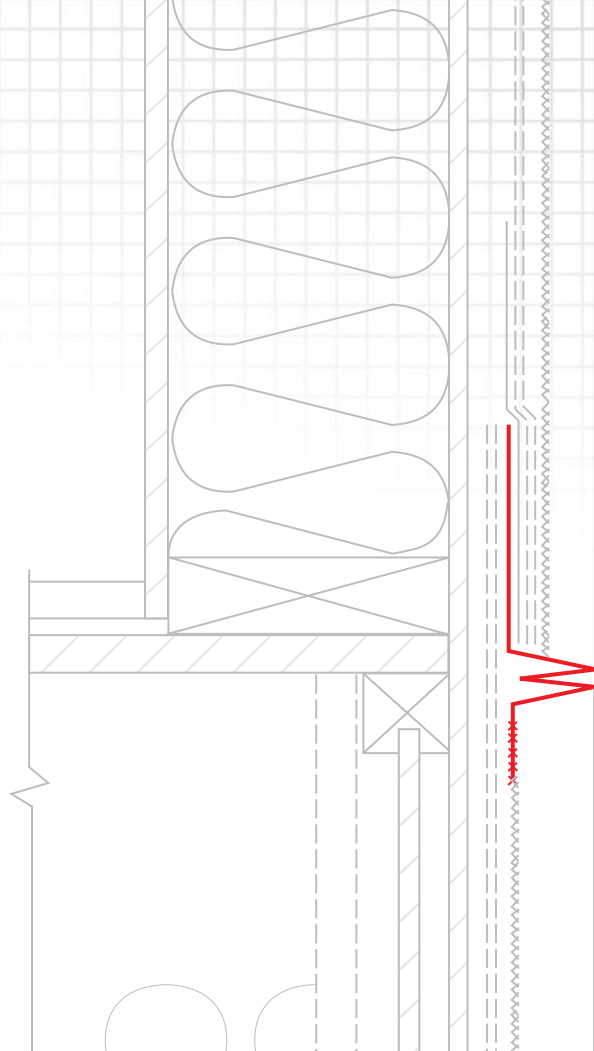


ALSO AVAILABLE IN
Copper



MADE IN AMERICA

*The illustrations within this brochure are intended to show the use of the product and are not to be used for technical application.



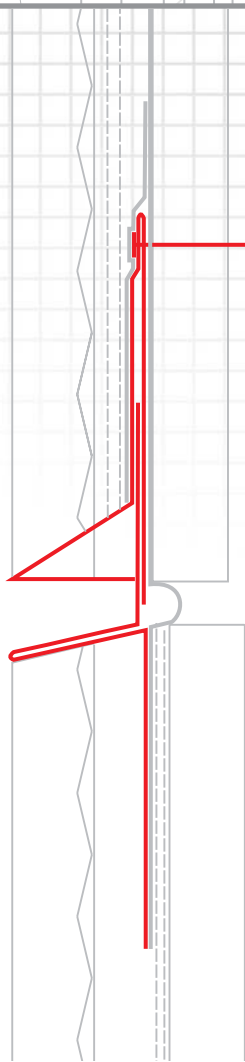
A

#15 Solid Leg

USAGE: One-piece horizontal control joint that provides a drainage point in the stucco assembly.

Dimensions and Specification Sheets can be downloaded at www.cemcosteel.com

PATENT PENDING



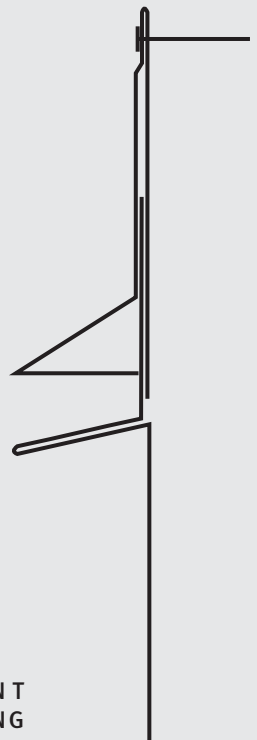
B

M-Slide Expansion Joint™

USAGE: Two-piece expansion joint provides exceptional movement and water management capabilities.

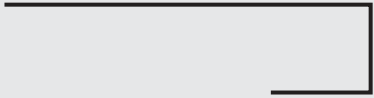
Dimensions and Specification Sheets can be downloaded at www.cemcosteel.com

PATENT PENDING

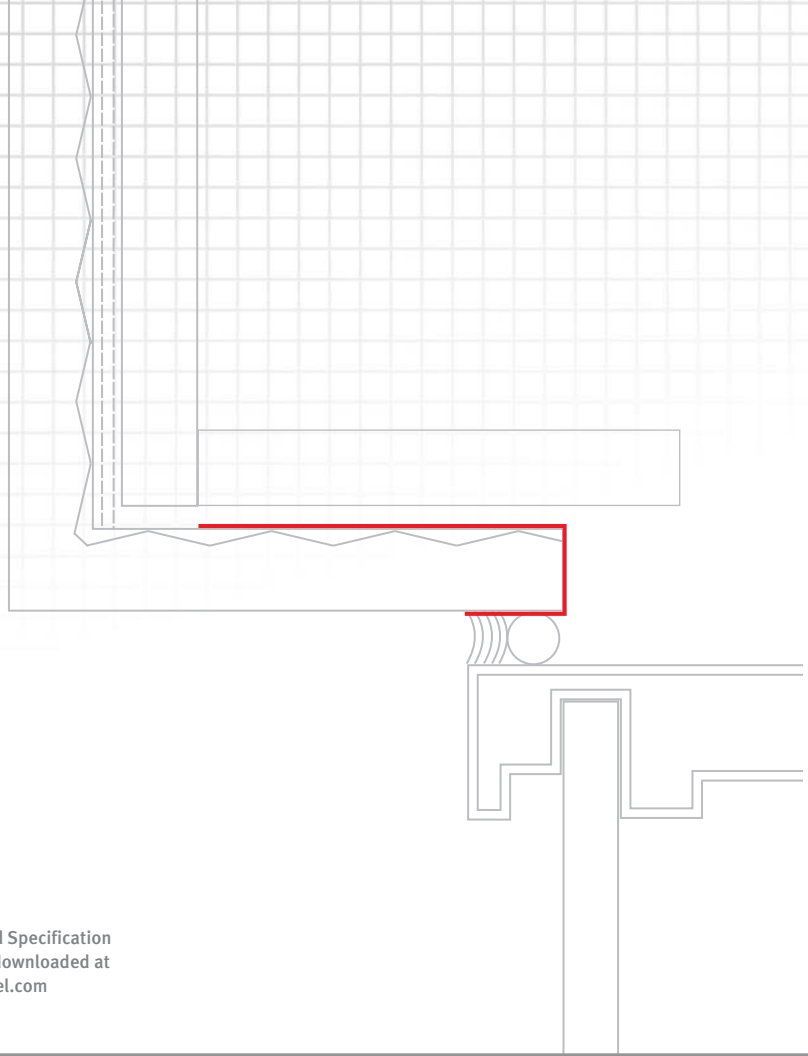


J-Series Casing Bead

USAGE: Non-perforated to enable casing bead to have flashing capabilities available in 36 different size options.



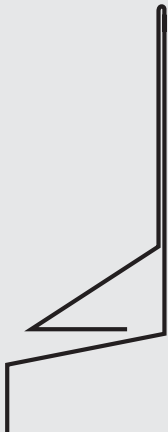
C



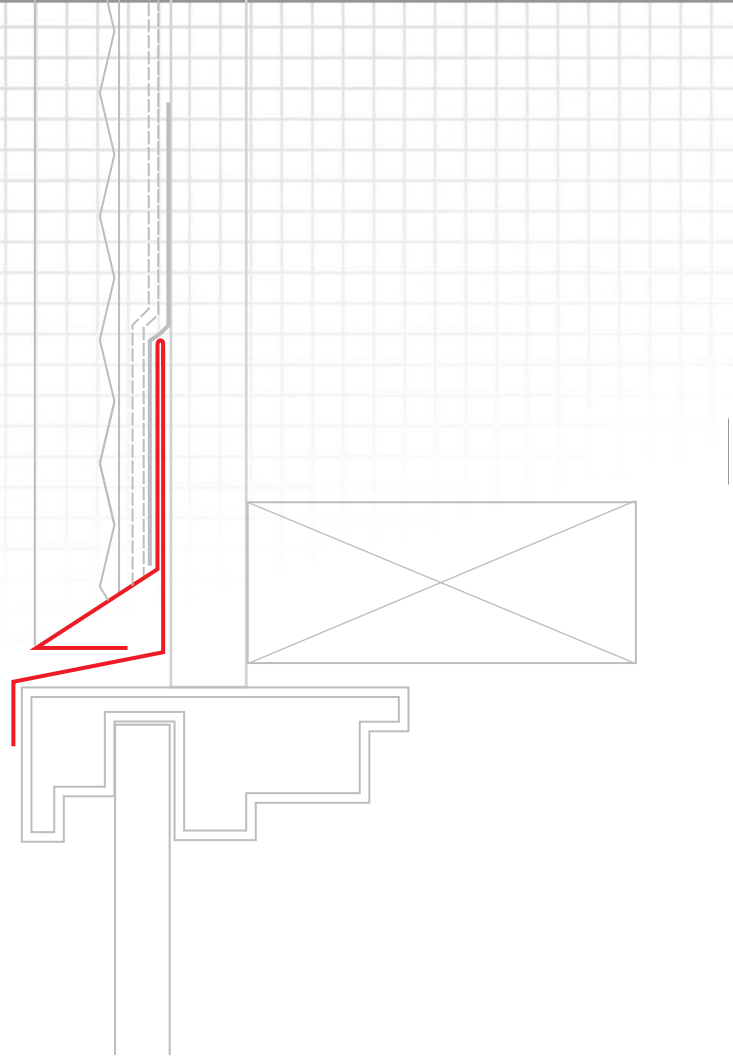
Dimensions and Specification Sheets can be downloaded at www.cemcosteel.com

#3 Flashing Screed

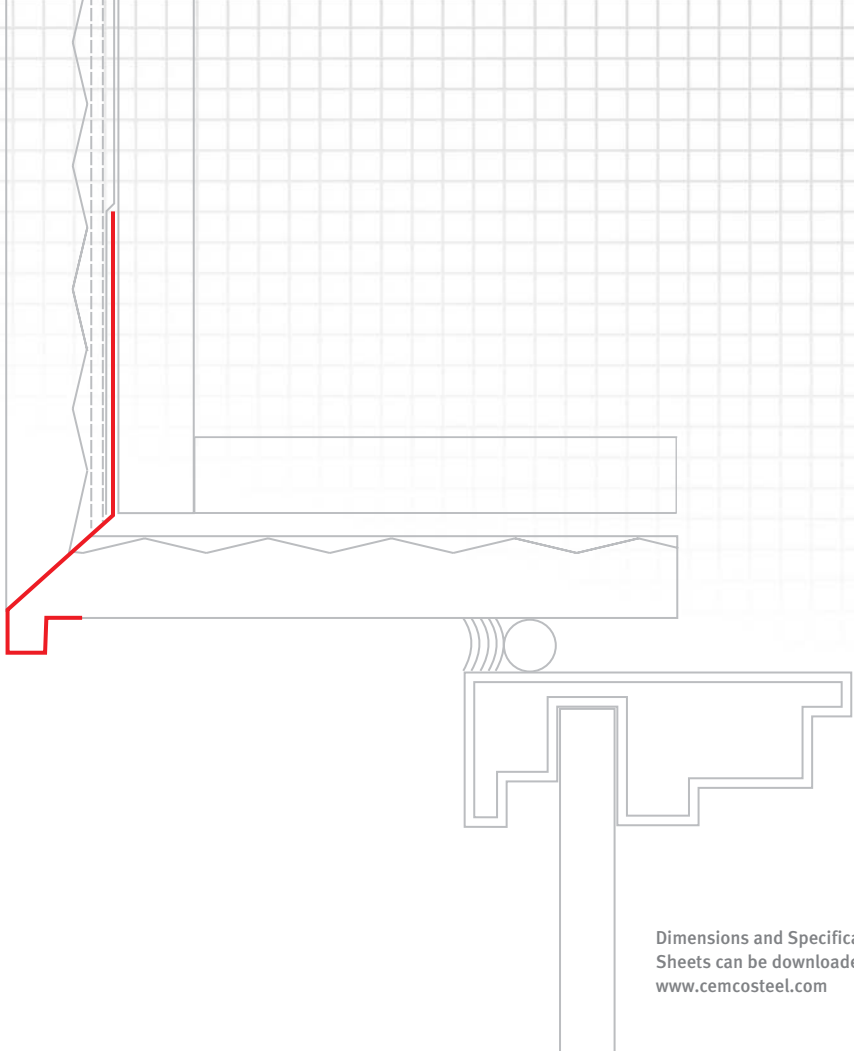
USAGE: One-piece Z-flashing weep screed combination for application at window head.



D

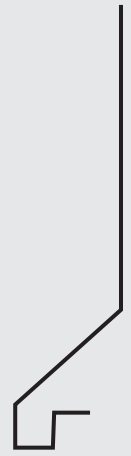


Dimensions and Specification Sheets can be downloaded at www.cemcosteel.com



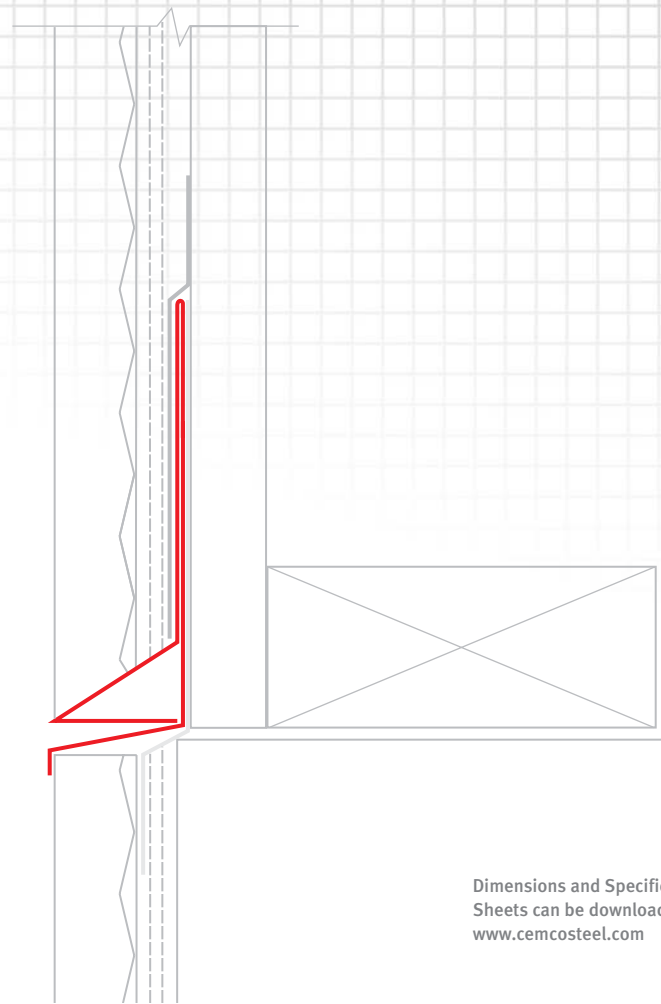
E *#12 Soffit Drip Edge*

USAGE: For application at soffits and recessed windows; provides drainage and drip edge



Dimensions and Specification Sheets can be downloaded at www.cemcosteel.com

PATENT PENDING



F *#9 Transition Control Joint*

USAGE: One-piece drainage accessory for application at substrate transitions between masonry and framed walls.

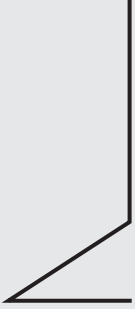


Dimensions and Specification Sheets can be downloaded at www.cemcosteel.com

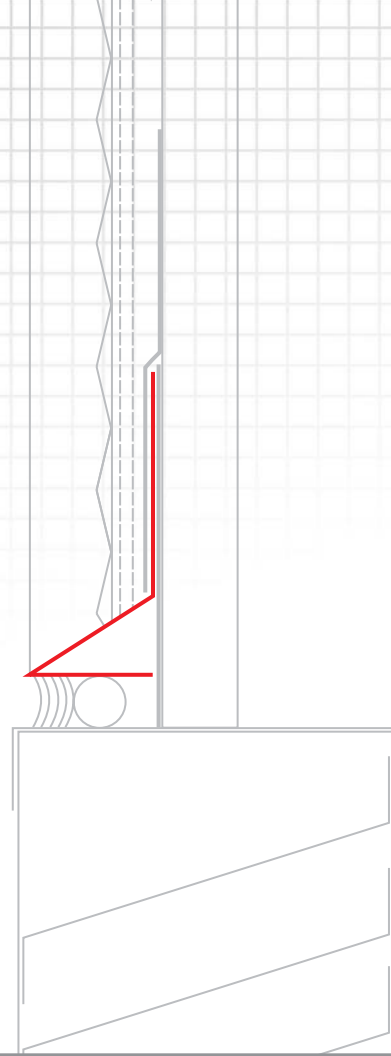
PATENT PENDING

#6 Drip Head

USAGE: For application above vents and doors; water can weep out of the slope leg and solid return leg used for sealant application.



G



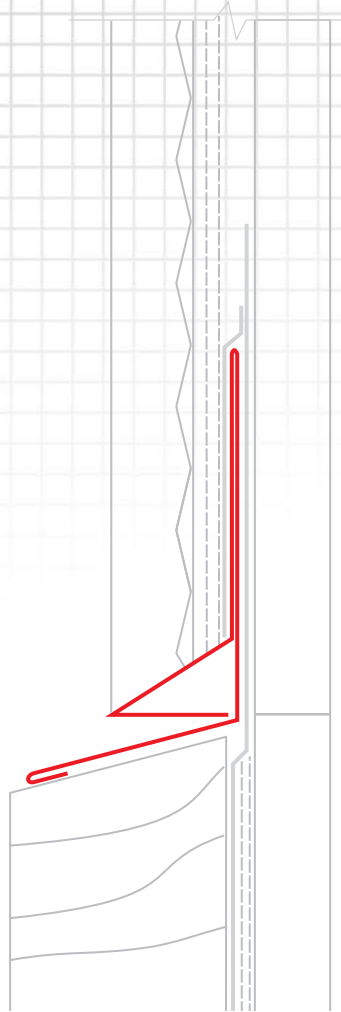
Dimensions and Specification
Sheets can be downloaded at
www.cemcosteel.com

#17 Base Flashing

USAGE: One-piece flashing weep screed for applications at decks where flashing is needed to protect waterproof membrane.

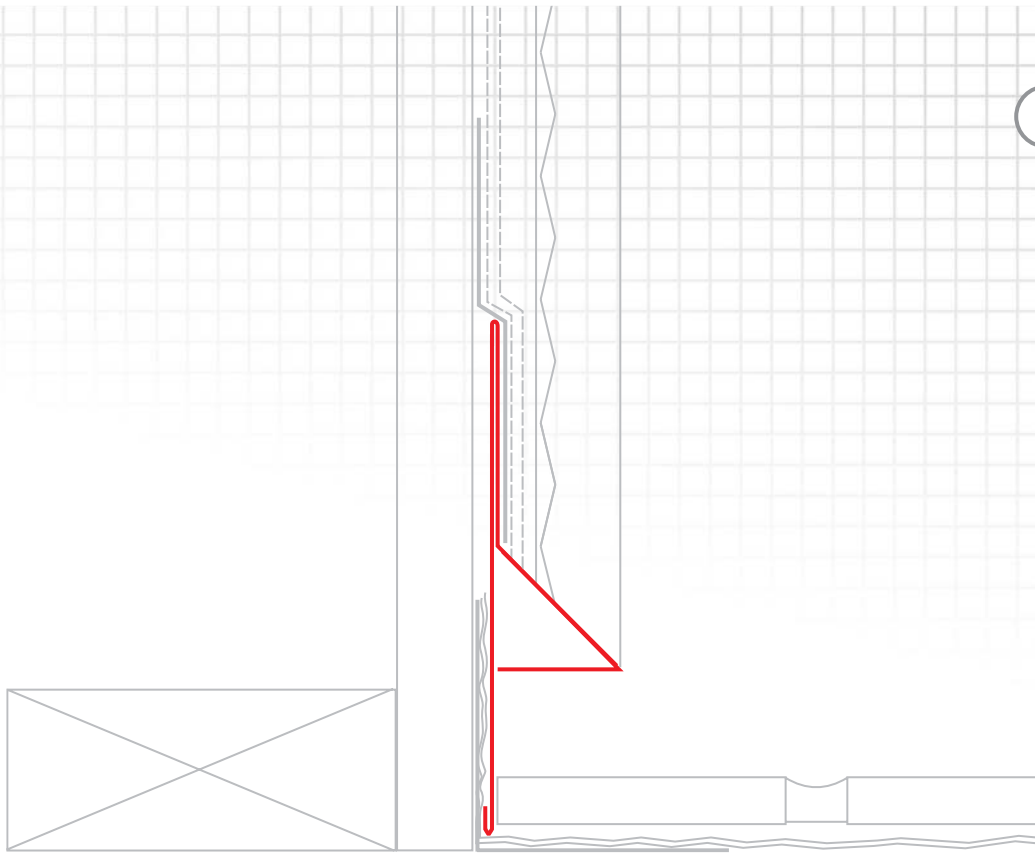


H



Dimensions and Specification
Sheets can be downloaded at
www.cemcosteel.com

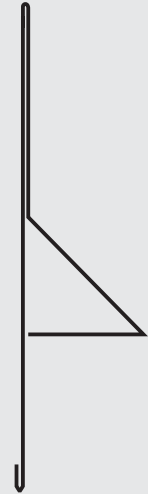
PATENT
PENDING



I

#7 Extended

USAGE: One-piece flashing weep screed for applications at decks where flashing is needed to protect waterproof membrane.



Dimensions and Specification Sheets can be downloaded at www.cemcosteel.com

PATENT PENDING



Steel Framing and Metal Lath

GO GREEN WITH CEMCO

California Expanded Metal Products Co. is proud to be a member of the U.S. Green Building Council and support its LEED program, which aims to improve environmental and economic performance of commercial and residential buildings.

LEED (Leadership in Energy & Environmental Design) certifies buildings that meet the standards utilizing energy, environmental design and products, as defined in the LEED rating system. The use of CEMCO products can help projects accumulate points in specific categories, including Recycled Content and Local/Regional Materials.

Recycled Content

Recycled steel content used in the fabrication of CEMCO cold-formed-steel products are in compliance with the Requirement for Environmental and Recycled Content Materials. CEMCO steel suppliers have indicated that their steel contains 25% to 35% recycled steel. The steel products are manufactured from steel consisting of the following contents:

- 32.7% virgin
- 12.8% post-consumer
- 14.7% post-industrial

Local/Regional Materials

CEMCO serves the Western United States through its primary locations in the City of Industry and Pittsburg, Calif., and Denver, Colo.



For more information on USGBC and LEED Certification, logon to: www.cemcosteel.com



Steel Framing and Metal Lath

800.775.2362
www.cemcosteel.com

**Corporate Headquarters &
Main Manufacturing Facility**

263 North Covina Lane
City of Industry, CA 91744

Phone: 800.775.2362
Fax: 626.330.7598

**Northern California
Manufacturing Facility**

1001-A Pittsburg Antioch Hwy
Pittsburg, CA 94565

Phone: 925.473.9340
Fax: 925.473.9341

**Denver Colorado
Manufacturing Facility**

490 Osage Street
Denver, CO 80204

Phone: 303.572.3626
Fax: 303.572.3627