

**Product Catalog**

**MADE IN THE USA**



<b>Hand Held Fire Extinguishers</b>	■	Page 4-12
ABC Dry Chemical	■	Page 5
Standard Dry Chemical	■	Page 6
Purple K Dry Chemical	■	Page 7
Halotron	■	Page 8
High Flow	■	Page 9
Heavy Duty High Flow	■	Page 10
Carbon Dioxide	■	Page 11
Water & Water Mist	■	Page 12
Wet Chemical - Class K	■	Page 13
Dry Powder - Class D	■	Page 14
<b>Offshore Extinguishers</b>	■	Page 15-16
<b>Automatic Spot Protection Fire Extinguishers</b>	■	Page 17-18
Vertical Mini-Guards	■	Page 17
Horizontal Mini-Guards	■	Page 18
<b>Wheeled Fire Extinguishers</b>	■	Page 19-23
Wheeled Halotron	■	Page 19
Wheeled Dry Chemical	■	Page 20-22
Wheeled Carbon Dioxide	■	Page 23
<b>Restaurant Fire Suppression Systems</b>	■	Page 24-25
<b>Foam Concentrates &amp; Hardware</b>	■	Page 26-27
<b>Gas and Flame Detection</b>	■	Page 28
<b>Aerosol Fire Suppression</b>	■	Page 29
<b>Recharge Agents</b>	■	Page 30
<b>Mounting Hardware</b>	■	Page 31-32
Wall Hooks	■	Page 31
Marine/Vehicle Brackets	■	Page 32
<b>Frequently Asked Questions</b>	■	Page 33-34





## American Made Since 1968

For over four decades **Buckeye Fire Equipment** has been an international leader in the development and manufacture of reliable fire protection products.

A privately owned and operated company with its headquarters near Charlotte, NC, Buckeye Fire Equipment has earned an excellent reputation for quality, reliability and value within the commercial and industrial fire protection industry.

We offer a complete line of handheld and wheeled fire extinguishers, extinguishing agents, fire suppressing foam concentrates & hardware and pre-engineered kitchen suppression systems.

To ensure our distributors and customers get the highest quality fire protection equipment, all of our products undergo rigorous testing, both in-house and by third party testing organizations such as Underwriters Laboratories, U.L. Canada, Factory Mutual, ASME and the U.S. Government.

We are committed to helpful and responsive customer service and knowledgeable and dependable technical support. This commitment has earned Buckeye Fire Equipment the coveted ISO 9001-2008 Quality Certification.

Contact us for more information about the wide selection of Buckeye Fire Equipment Company products and services. We have trained personnel who are ready to assist you with your fire protection needs.

## Selection Guide

To provide the best protection of life and property from fire, it is critical that the proper extinguisher selection be made. The classification and rating of an extinguisher are vital pieces of information for making this selection.

The National Fire Protection Association (NFPA) has established the requirements for the **number, size, placement, performance** and **maintenance** of portable fire extinguishers. These requirements are contained in NFPA 10, "Standard for Portable Fire Extinguishers".

Within this standard it is stated that the selection of fire extinguishers for a given situation is determined by the following:

- the character and size of the fires anticipated to be encountered.
- the construction and occupancy of the property to be protected.
- the ambient temperature of the area where the extinguisher will be located.
- other factors that may dictate the selection of a particular type of extinguisher.

## Fire Classifications

Generally fire extinguishers are selected based on the hazard(s) they are intended to protect. Classifications have been established to categorize these hazards as follows:



**Class A:** Fires involving ordinary combustible materials such as wood, cloth, paper, rubber and many plastics.



**Class B:** Fires involving flammable liquids, combustible liquids, petroleum grease, tars, oils, oil based paints, solvents, lacquers, alcohols, and flammable gases.



**Class C:** Fires that involve energized electrical equipment.



**Class D:** Fires involving combustible metals such as magnesium, sodium, potassium and titanium.



**Class K:** Fires involving combustible cooking media such as vegetable oils, animal oils and fats.





### Fire Ratings

Along with the classification, the numerical rating of an extinguisher is an important factor in the proper selection of an extinguisher. The rating is a measure of the extinguishing potential of the fire extinguisher and is developed on the basis of comparative fire tests.

Only **Class A** and **Class B** classifications carry numerical ratings. Basically the higher the number associated with the classification letter, the larger the fire the extinguisher has the potential to extinguish.

**Class A** fire tests involve two types of fire, a wood crib fire test and a wood panel fire test. For example to achieve a 3-A rating an extinguisher must successfully extinguish a burning wood crib measuring 29" x 29" x 27" and a wood panel measuring 12' x 12'.

**Class B** fire tests involve square pans containing flammable liquid.

For example to achieve a 40-B rating an extinguisher must successfully extinguish a burning pan measuring 100 sq. ft.

There are no numerical ratings associated with Class C, D or K.

**For Class C**, the electrical nonconducting characteristics of the agent are verified, not its extinguishing potential.

**For Class D**, only the amount of agent and application method needed to control a metal fire of a certain size and type is tested.

**For Class K**, the extinguisher must extinguish 80 lbs. of burning cooking oil in a commercial deep fat fryer and cause no splashing of flaming oil outside the fryer.

### Placement/Accessibility Of Extinguisher

Fire Classification	Class A	Class B	Class C	Class D	Class K
Maximum Travel Distance To Fire Extinguisher	75 Feet Maximum area that one extinguisher can protect and meet the 75 ft. rule = 11,250 sq. ft..	50 Feet Maximum area that one extinguisher can protect and meet the 50 ft. rule = 5,000 sq. ft..	In accordance with the Class A or B hazard it is protecting	75 Feet	30 Feet Maximum area that one extinguisher can protect and meet the 30 ft. rule = 1,800 sq. ft.

### Occupancy Hazards

The NFPA classifies occupancies as either Low, Moderate or High Hazard.

**Low hazard occupancies** are locations where the total amount of Class A combustible materials and Class B flammables, including furnishings, decorations, and contents, is of minor quantity. This can include some buildings or rooms occupied as offices, classrooms, churches, assembly halls, guest room areas of hotels/motels.

**Moderate hazard occupancies** are locations where the total amount of Class A combustibles and Class B flammables are present in greater amounts than expected under low hazard occupancies.

These occupancies could consist of dining areas, mercantile shops and allied storage, light manufacturing, research operations, auto showrooms, parking garages and workshops.

**High hazard occupancies** are locations where the total amount of Class A combustibles and Class B flammables present, in storage, production, use, finished product, or combination thereof, is over and above those expected in occupancies classed as moderate hazard.

These occupancies could consist of

woodworking; vehicle repair; aircraft and boat servicing; cooking areas; individual product display showrooms; product convention center displays; and storage and manufacturing processes such as painting, dipping, and coating, including flammable liquid handling.

Occupancies	Min. Rating	Unit of A
Low	2-A:5/10-B	3000
Moderate	2-A:10/20-B	1500
High	4-A:40/80-B	1000

**Note:** If the lower B rating is installed then the maximum travel distance to the extinguisher is reduced from 50 to 30 feet.

To determine the overall A rating necessary for protection of an occupancy, divide the total sq. ft. by the Unit of A in the above table. For example if a low occupancy building has a total sq. ft. of 30,000. Divide 30,000 by 3000 (Unit of A) = 10.

Therefore in this example the building would require a minimum of five 2-A rated extinguishers.



*This ABC extinguisher is rated 3-A:40-B:C. The 3 and the 40 indicate the extinguishing potential for Class A and Class B fires respectively. The C indicates that the agent will not conduct electricity. This unit exceeds the minimum rating for Low and Moderate occupancy requirements.*



## Company Goal

Our goal is to provide our customers with quality fire extinguishers at a great value. In pursuit of this, we are proud to say that we manufacture all our products in the U.S.A. We mill and blend our own dry chemical agents, machine the component parts, assemble and then test our units to the highest quality standards.

*Third Party Approvals For Peace Of Mind*



## Key Features Of Buckeye Fire Extinguishers

- Manufactured to meet UL/ULC's rigorous standards for commercial hazard protection and backed by our manufacturer's warranty.
- Dry Chemical and Halotron extinguisher cylinders are constructed out of deep drawn and ironed carbon steel. Carbon Dioxide cylinders are constructed out of 6061 TG aluminum.
- Rechargeable.
- Anodized aluminum or plated brass valve assemblies for superior strength and corrosion resistance.
- The extinguisher nameplate incorporates trilingual operating and maintenance instructions, English, Spanish and French.
- Color-coded gauges show operating status at-a-glance.
- Extinguishers have model and serial number bar coding for easy and accurate maintenance history.
- Metal pull pins, vehicle brackets and wall hooks for extended unit service life.





## ABC Dry Chemical

ABC Dry Chemical is a multipurpose extinguishing agent that is suitable for use on Class A, Class B and Class C fires.

**Typical Uses:** For public areas such as offices, classrooms, churches, parking garages, and hotel/motel assembly halls and guest areas. For businesses such as retail stores, light manufacturing facilities, research facilities, auto dealerships, vehicle/aircraft/marine service centers, and manufacturing processes such as painting, dipping, and coating.

Not recommended for use on sensitive electronic equipment or aircraft structure.

Third Party Approvals For Peace Of Mind



Canadian Part Numbers are shown in parentheses. V/B = Vehicle Bracket Included.

Model	2.55A-ABC	5HISA20-ABC	5HISA40-ABC 5HISB40-ABC*	5HISA40-ABC 5HISB40-ABC*	10HI SA80 ABC 10HI SB80 ABC*	10SHISA-ABC	20SHISA-ABC 20SHISB-ABC*	30SHISB-ABC*
Description	2.5 lb. ABC Vehicle Bracket	5 lb. ABC Wall Mount	5 lb. ABC Wall Mount	5 lb. ABC Vehicle Bracket	10 lb. ABC Wall Mount	10 lb. Short ABC Wall Mount	20 lb. ABC Wall Mount	30 lb. ABC Wall Mount
Pt. # Alum. Valve	13315 (13390)	10920	10914 (10990)	25614 (25690)	11340 (11390)	11310 (11320)	12120 (12195)	N/A
Pt. # Brass Valve	N/A	N/A	10915 (10995)	25615 (25695)	11341 (11349)	N/A	12121 (12196)	12905 (12915)
Agent Capacity	2.5 lb. (1.13 kg)	5 lb. (2.27 kg)	5 lb. (2.27 kg)	5 lb. (2.27 kg)	10 lb. (4.54 kg)	10 lb. (4.54 kg)	20 lb. (9.07 kg)	30 lb. (13.6 kg)
UL/ULC Rating	1-A:10-B:C	2-A:20-B:C	3-A:40-B:C	3-A:40-B:C	4-A:80-B:C	4-A:60-B:C	10-A:120-B:C	10-A:160-B:C
Temperature Range	-65° to 120°F (-54° to 49°C)							
Discharge Time	9 sec	14 sec	14 sec	14 sec	22 sec	18 sec	27 sec	32 sec
Discharge Range ft (m)	9-15 (2.7-4.6)	12-18 (3.7-5.5)	12-18 (3.7-5.5)	12-18 (3.7-5.5)	15-21 (4.6-6.4)	15-21 (4.6-6.4)	15-21 (4.6-6.4)	25-30 (7.6-9.1)
Operating Pressure	100 psi (689 kPa)	195 psi (1344 kPa)	195 psi (1344 kPa)	195 psi (1344 kPa)	195 psi (1344 kPa)	195 psi (1344 kPa)	195 psi (1344 kPa)	195 psi (1344 kPa)
USCG Approval	Type B:C Size I	Type A Size II Type B:C Size I	Type A Size II Type B:C Size I	Type A Size II Type B:C Size I	Type A Size II Type B:C Size II	Type A Size II Type B:C Size II	Type A Size II Type B:C Size III	Type A Size II Type B:C Size IV
Ship Weight	5.5 lb. (2.5 kg)	10 lb. (4.5 kg)	10 lb. (4.5 kg)	10.25 lb. (4.7 kg)	18.25 lb. (8.3 kg)	18.75 lb. (8.6 kg)	33.5 lb. (15.2 kg)	52.25 lb. (23.7 kg)
Unit Height	14.75 in (37.5 cm)	16.375 in (41.6 cm)	16.375 in (41.6 cm)	16.375 in (41.6 cm)	21 in (53.3 cm)	16.75 in (42.5 cm)	21.25 in (53.8 cm)	27.375 in (69.4 cm)
Unit Width	4.875 in (12.4 cm)	7.25 in (18.4 cm)	7.25 in (18.4 cm)	7.25 in (18.4 cm)	7.75 in (19.7 cm)	8.25 in (21 cm)	8.75 in (22.2 cm)	8.75 in (22.2 cm)
Unit Diameter	3.375 in (8.6 cm)	4.25 in (10.8 cm)	4.25 in (10.8 cm)	4.25 in (10.8 cm)	5.125 in (13 cm)	6 in (15.2 cm)	7.5 in (19.1 cm)	7.5 in (19.1 cm)

\* Denotes units with brass valves



## Standard Dry Chemical

Standard (BC) Dry Chemical is a sodium bicarbonate based extinguishing agent that is suitable for use on Class B and Class C fires.

**Typical Uses:** For flammable liquid hazards in public areas such as offices, classrooms, churches, parking garages, and hotel/motel assembly halls and guest areas. For flammable liquid hazards in businesses such as retail stores, light manufacturing facilities, research facilities, auto dealerships, vehicle/aircraft/marine service centers, and manufacturing processes such as painting, dipping, and coating.

Not recommended for use on sensitive electronic equipment.



Third Party Approvals For Peace Of Mind



Canadian Part Numbers are shown in parentheses. V/B = Vehicle Bracket Included.

Model	2.5SA-STD	5.5HISA40-STD	5.5HISA40-STD	10HISA-STD	20SHISA-STD
Description	2.5 lb. STD Vehicle Bracket	5 lb. STD Wall Mount	5 lb. STD Vehicle Bracket	10 lb. STD Wall Mount	20 lb. STD Wall Mount
Pt. # Alum. Valve	13415 (13490)	11014 (11090)	13514 (13581)	11840 (11890)	12220 (12290)
Agent Capacity	2.5 lb. (1.13 kg)	5.5 lb. (2.5 kg)	5.5 lb. (2.5 kg)	10 lb. (4.54 kg)	20 lb. (9.07 kg)
UL/ULC Rating	10-B:C	40-B:C	40-B:C	40-B:C	120-B:C
Temperature Range	-65° to 120°F (-54° to 49°C)				
Discharge Time	9 sec	14 sec	14 sec	14 sec	28 sec
Discharge Range ft (m)	9-15 (2.7-4.6)	12-18 (3.7-5.5)	12-18 (3.7-5.5)	15-21 (4.6-6.4)	15-21 (4.6-6.4)
Operating Pressure	100 psi (689 kPa)	195 psi (1344 kPa)	195 psi (1344 kPa)	195 psi (1344 kPa)	195 psi (1344 kPa)
USCG Approval	Type B:C Size I	Type B:C Size I	Type B:C Size I	Type B:C Size II	Type B:C Size III
Ship Weight	5.5 lb. (2.5 kg)	10.5 lb. (4.8 kg)	10.75 lb. (4.9 kg)	18.25 lb. (8.3 kg)	33.5 lb. (15.2 kg)
Unit Height	14.75 in (37.5 cm)	16.375 in (41.6 cm)	16.375 in (41.6 cm)	21 in (53.3 cm)	21.25 in (53.8 cm)
Unit Width	4.875 in (12.4 cm)	7.25 in (18.4 cm)	7.25 in (18.4 cm)	7.75 in (19.7 cm)	8.75 in (22.2 cm)
Unit Diameter	3.375 in (8.6 cm)	4.25 in (10.8 cm)	4.25 in (10.8 cm)	5.125 in (13 cm)	7.5 in (19.1 cm)



## Purple K Dry Chemical

Purple K Dry Chemical is a high performance extinguishing agent most effective for dealing with flammable liquid fires. Purple K is suitable for use on Class B and Class C fires.

**Typical Uses:** For flammable liquid hazards in public areas such as offices, classrooms, churches, parking garages, and hotel/motel assembly halls and guest areas. For flammable liquid hazards in businesses such as retail stores, light manufacturing facilities, research facilities, auto dealerships, vehicle/aircraft/marine service centers, and manufacturing processes such as painting, dipping, and coating.

Not recommended for use on sensitive electronic equipment.

Third Party Approvals For Peace Of Mind



Canadian Part Numbers are shown in parentheses. V/B = Vehicle Bracket Included.

Model	2.5SA-PK	5HISA-PK	5HISA-PK	5 HI SAN-PK Fixed Nozzle	5 HI SAN-PK Fixed Nozzle	10HISA-PK	20SHISA-PK 20SHISB-PK*	30SHISB-PK*
Description	2.5 lb. PK Vehicle Bracket	5 lb. PK Wall Mount	5 lb. PK Vehicle Bracket	5 lb. PK Wall Mount	5 lb. PK Vehicle Bracket	10 lb. PK Wall Mount	20 lb. PK Wall Mount	30 lb. PK Wall Mount
Pt. # Alum. Valve	13515 (13590)	11214 (11290)	25914 (25915)	11214N	25914N	11740 (11790)	12620 (12690)	N/A
Pt. # Brass Valve	N/A	N/A	N/A	N/A	N/A	N/A	12621 (12691)	12805 (12815)
Agent Capacity	2.5 lb. (1.13 kg)	5 lb. (2.27 kg)	5 lb. (2.27 kg)	5 lbs. (2.27 kg)	5 lbs. (2.27 kg)	10 lb. (4.54 kg)	20 lb. (9.07 kg)	30 lb. (13.6 kg)
UL/ULC Rating	10-B:C	20-B:C	20-B:C	10-B:C	10-B:C	80-B:C	120-B:C	160-B:C
Temperature Range	-65° to 120°F (-54° to 49°C)							
Discharge Time	9 sec	9 sec	9 sec	12 Seconds	12 Seconds	22 sec	27 sec	32 sec
Discharge Range ft (m)	9-15 (2.7-4.6)	12-18 (3.7-5.5)	12-18 (3.7-5.5)	12-18 (3.7-5.5)	12-18 (3.7-5.5)	15-21 (4.6-6.4)	15-21 (4.6-6.4)	25-30 (7.6-9.1)
Operating Pressure	100 psi (689 kPa)	195 psi (1344 kPa)	195 psi (1344 kPa)	195 psi (1344 kPa)	195 psi (1344 kPa)	195 psi (1344 kPa)	195 psi (1344 kPa)	195 psi (1344 kPa)
USCG Approval	Type B:C Size I	Type B:C Size I	Type B:C Size I	Type B:C Size I	Type B:C Size I	Type B:C Size II	Type B:C Size III	Type B:C Size IV
Ship Weight	5.5 lb. (2.5 kg)	10 lb. (4.5 kg)	10.25 lb. (4.7 kg)	9.5 lb. (4.3 kg)	9.75 lb. (4.4 kg)	18.25 lb. (8.3 kg)	33.5 lb. (15.2 kg)	52.25 lb. (23.7 kg)
Unit Height	14.75 in (37.5 cm)	16.375 in (41.6 cm)	16.375 in (41.6 cm)	16.375 in (41.6 cm)	16.375 in (41.6 cm)	21 in (53.3 cm)	21.25 in (53.8 cm)	27.375 in (69.4 cm)
Unit Width	4.875 in (12.4 cm)	7.25 in (18.4 cm)	7.25 in (18.4 cm)	6 in (15.24 cm)	6 in (15.24 cm)	7.75 in (19.7 cm)	8.75 in (22.2 cm)	8.75 in (22.2 cm)
Unit Diameter	3.375 in (8.6 cm)	4.25 in (10.8 cm)	4.25 in (10.8 cm)	4.25 in (10.8 cm)	4.25 in (10.8 cm)	5.125 in (13 cm)	7.5 in (19.1 cm)	7.5 in (19.1 cm)

\*Denotes extinguishers with brass valves





## Halotron

Halotron is a clean, non conductive gaseous agent that is an excellent replacement for Halon 1211 extinguishers. Halotron is suitable for use on Class A, Class B and Class C fires.

**Typical Uses:** For protecting sensitive electronic equipment in offices, classrooms, churches, parking garages, and hotel/ motel assembly halls and guest areas. For protecting sensitive electronic equipment in businesses such as retail stores, light manufacturing facilities, research facilities, auto dealerships, vehicle/aircraft/marine service centers, and manufacturing processes such as painting, dipping, and coating.

Recommended for use on sensitive electronic equipment.

Third Party Approvals For Peace Of Mind



Canadian Part Numbers are shown in parentheses. V/B = Vehicle Bracket Included. F = Fixed Nozzle. H = Hose.

Model	2.5 FSA	2.5 FSA	2.5 HSA	2.5 HSA	5 FSA	5 FSA	5 HSA	5 HSA	11 SA 11 SB*	15 SA 15 SB*
Description	2.5 lb. Nozzle Wall Mount	2.5 lb. Nozzle Vehicle Brkt	2.5 lb. Hose Wall Mount	2.5 lb. Hose Vehicle Brkt	5 lb. Nozzle Wall Mount	5 lb. Nozzle Vehicle Brkt	5.5 lb. Hose Wall Mount	5.5 lb. Hose Vehicle Brkt	11 lb. Hose Wall Mount	15.5 lb. Hose Wall Mount
Pt. # Alum. Value	70258 (70280)	70251 (70295)	70259 (70260)	70256 (70265)	70510 (70580)	70550 (70590)	75550 (75560)	75555 (75565)	71100 (71180)	71550 (71580)
Pt. # Brass Value	N/A	N/A	N/A	N/A	N/A	N/A	N/A	N/A	71101 (71181)	71551 (71581)
Agent Capacity	2.5 lb. (1.13 kg)	2.5 lb. (1.13 kg)	2.5 lb. (1.13 kg)	2.5 lb. (1.13 kg)	5 lb. (2.27 kg)	5 lb. (2.27 kg)	5.5 lb. (2.49 kg)	5.5 lb. (2.49 kg)	11 lb. (5 kg)	15.5 lb. (7.03 kg)
UL/ULC Rating	2-B:C	2-B:C	2-B:C	2-B:C	5-B:C	5-B:C	5-B:C	5-B:C	1-A:10-B:C	2-A:10-B:C
Temperature Range	-40° to 120°F (-40° to 49°C)									
Discharge Time	9 sec	9 sec	9 sec	9 sec	9 sec	9 sec	9 sec	9 sec	9 sec	13 sec
Discharge Range ft (m)	6-10 (1.8-3)	6-10 (1.8-3)	6-10 (1.8-3)	6-10 (1.8-3)	9-15 (2.7-4.5)	9-15 (2.7-4.5)	9-15 (2.7-4.5)	9-15 (2.7-4.5)	9-15 (2.7-4.5)	12-18 (3.7-5.5)
Operating Pressure	100 psi (689 kPa)	100 psi (689 kPa)	100 psi (689 kPa)	100 psi (689 kPa)	100 psi (689 kPa)	100 psi (689 kPa)	100 psi (689 kPa)	100 psi (689 kPa)	100 psi (689 kPa)	125 psi (862 kPa)
USCG Approval	N/A	N/A	N/A	N/A	N/A	Type B:C Size I	N/A	Type B:C Size I	Type B:C Size I	Type B:C Size II
Ship Weight	5.25 lb. (2.4 kg)	5.5 lb. (2.49 kg)	5.5 lb. (2.49 kg)	5.75 lb. (2.6 kg)	9.25 lb. (4.2 kg)	9.5 lb. (4.3 kg)	10.0 lb. (4.5 kg)	10.25 lb. (4.7 kg)	21.25 lb. (9.6 kg)	25.75 lb. (11.75 kg)
Unit Height	13.375 in (34 cm)	13.375 in (34 cm)	13.375 in (34 cm)	13.375 in (34 cm)	16.375 in (41.6 cm)	16.375 in (41.6 cm)	16.375 in (41.6 cm)	16.375 in (41.6 cm)	17.5 in (44.5 cm)	17.5 in (44.5 cm)
Unit Width	5.625 in (14.3 cm)	5.625 in (14.3 cm)	6.75 in (17.1 cm)	6.75 in (17.1 cm)	6.5 in (16.5 cm)	7.25 in (18.5 cm)	6.5 in (16.5 cm)	7.25 in (18.5 cm)	8.625 in (21.9 cm)	8.625 in (21.9 cm)
Unit Diameter	3.375 in (8.6 cm)	3.375 in (8.6 cm)	3.375 in (8.6 cm)	4.25 in (10.8 cm)	4.25 in (10.8 cm)	4.25 in (10.8 cm)	4.25 in (10.8 cm)	4.25 in (10.8 cm)	7 in (17.8 cm)	7 in (17.8 cm)

\* Denotes units with brass valves



## High Flow

Buckeye's High Flow product line of fire extinguishers sets the standard for quality and reliability in the high flow extinguisher category. Designed to deliver outstanding performance, Buckeye High Flow extinguishers are specifically suited to meet the demands of industrial applications where NFPA 10 requires the installation of high flow extinguishers; installations where hazards such as pressurized flammable liquids, pressurized gas, or three dimensional fires exist.

### Key Features

- Exceeds UL and NFPA requirement for 1 lb. per second discharge rate
- UL and ULC Listed
- Rugged steel cylinders, plated brass valves, and baked-on polyester epoxy top coat
- Meets DOT and TC requirements
- US Coast Guard Approved with listed marine bracket
- Trilingual labels-English, Spanish, and French
- Widest selection of agents and sizes in the industry
- Operating temperature is -65°F to 120°F
- Operating pressure 195 psi

Third Party Approvals For Peace Of Mind



Canadian Part Numbers are shown in parentheses.

Model	10 HF ABC	10 HF PK	10 HF STD	13 HF ABC	13 HF PK	13 HF STD	20 HF ABC	20 HF PK	20 HF STD	30 HF ABC	30 HF PK	30 HF STD
Pt. #	11350 (11350ULC)	11650 (11650ULC)	11850 (11850ULC)	11150 (11150ULC)	11250 (11250ULC)	11450 (11450ULC)	12350 (12350ULC)	12650 (12650ULC)	12850 (12850ULC)	13350 (13350ULC)	13650 (13650ULC)	13850 (13850ULC)
Agent Capacity	10 Lbs. (4.54 kg)	10 Lbs. (4.54 kg)	10 Lbs. (4.54 kg)	13.2 lbs. (6 kg)	13.2 lbs. (6 kg)	13.2 lbs. (6 kg)	20 lbs. (9.07 kg)	20 lbs. (9.07 kg)	20 lbs. (9.07 kg)	30 lbs. (13.6 kg)	30 lbs. (13.6 kg)	30 lbs. (13.6 kg)
UL/ULC Rating	1-A:20-B:C	20-B:C	10-B:C	1-A:10-B:C	20-B:C	10-B:C	4-A:60-B:C	60-B:C	60-B:C	4-A:80-B:C	80-B:C	40-B:C
Discharge Rate (lb/sec)	1.11	1.03	1.17	1.26	1.11	1.25	1.17	1.57	1.34	1.43	1.56	1.75
Discharge Time (Secs)	10 sec	10	9	11	12	10	18	13	14	22	21	17
Discharge Range ft (m)	30-40 ft (9.14-12.19m)	30-40 ft (9.14-12.19m)	30-40 ft (9.14-12.19m)	40-50 ft (12.19-15.24m)	40-50 ft (12.19-15.24m)	40-50 ft (12.19-15.24m)	40-50 ft (12.19-15.24m)	40-50 ft (12.19-15.24m)	40-50 ft (12.19-15.24m)	40-50 ft (12.19-15.24m)	40-50 ft (12.19-15.24m)	40-50 ft (12.19-15.24m)
USCG Approval	Type A Size II Type B:C Size II	Type B:C Size II	Type B:C Size II	Type A Size II Type B:C Size II	Type B:C Size II	Type B:C Size II	Type A Size II Type B:C Size III	Type B:C Size III	Type B:C Size III	Type A Size II Type B:C Size IV	Type B:C Size IV	Type B:C Size IV



## Heavy Duty High Flow

Buckeye's Heavy Duty High Flow product line of fire extinguishers go where other fire extinguishers fear to tread. Designed for installations in harsh, unforgiving environments, the Buckeye Heavy Duty High Flow extinguishers not only meet the demands where NFPA 10 requires the installation of high flow extinguishers, installations where hazards such as pressurized flammable liquids, pressurized gas, or three dimensional fires exist, but they are also equipped with additional features that make them less susceptible to damage and wear that would take other extinguishers out of service.

### Key Features

- Exceeds UL and NFPA requirement for 1 lb. per second discharge rate
- Rugged steel cylinders and nickel-plated brass valves
- Galvanizing compound coating with a baked-on polyester epoxy finish coat provides unmatched corrosion protection - passes 3000 hr salt spray test
- Stainless Steel operating handles and Pull Pin
- Plated brass gauge guard and protective vinyl foot ring
- UL and ULC Listed
- Meets DOT and TC requirements
- US Coast Guard Approved with listed marine bracket
- Trilingual labels-English, Spanish, and French
- Widest selection of agents and sizes in the industry
- Operating temperature is -65°F to 120°F
- Operating pressure 195 psi

Third Party Approvals For Peace Of Mind



Canadian Part Numbers are shown in parentheses.

Model	10 HDHF ABC	10 HDHF PK	10 HDHF STD	13 HDHF ABC	13 HDHF PK	13 HDHF STD	20 HDHF ABC	20 HDHF PK	20 HDHF STD	30 HDHF ABC	30 HDHF PK	30 HDHF STD
Pt. #	11351 (11351ULC)	11651 (11651ULC)	11851 (11851ULC)	11151 (11151ULC)	11251 (11251ULC)	11451 (11451ULC)	12351 (12351ULC)	12651 (12651ULC)	12851 (12851ULC)	13351 (13351ULC)	13651 (13651ULC)	13851 (13851ULC)
Agent Capacity	10 Lbs. (4.54 kg)	10 Lbs. (4.54 kg)	10 Lbs. (4.54 kg)	13.2 lbs. (6 kg)	13.2 lbs. (6 kg)	13.2 lbs. (6 kg)	20 lbs. (9.07 kg)	20 lbs. (9.07 kg)	20 lbs. (9.07 kg)	30 lbs. (13.6 kg)	30 lbs. (13.6 kg)	30 lbs. (13.6 kg)
UL/ULC Rating	1-A:20-B:C	20-B:C	10-B:C	1-A:10-B:C	20-B:C	10-B:C	4-A:60-B:C	60-B:C	60-B:C	4-A:80-B:C	80-B:C	40-B:C
Discharge Rate (lb/sec)	1.11	1.03	1.17	1.26	1.11	1.25	1.17	1.57	1.34	1.43	1.56	1.75
Discharge Time (Secs)	10	10	9	11	12	10	18	13	14	22	21	17
Discharge Range ft (m)	30-40 ft (9.14-12.19m)	30-40 ft (9.14-12.19m)	30-40 ft (9.14-12.19m)	40-50 ft (12.19-15.24m)	40-50 ft (12.19-15.24m)	40-50 ft (12.19-15.24m)	40-50 ft (12.19-15.24m)	40-50 ft (12.19-15.24m)	40-50 ft (12.19-15.24m)	40-50 ft (12.19-15.24m)	40-50 ft (12.19-15.24m)	40-50 ft (12.19-15.24m)
USCG Approval	Type A Size II Type B:C Size II	Type B:C Size II	Type B:C Size II	Type A Size II Type B:C Size II	Type B:C Size II	Type B:C Size II	Type A Size II Type B:C Size III	Type B:C Size III	Type B:C Size III	Type A Size II Type B:C Size IV	Type B:C Size IV	Type B:C Size IV



## Carbon Dioxide

Carbon Dioxide is the trusted non-conductive clean agent and is most effective for dealing with electronic equipment fires. CO2 is suitable for use on Class B and Class C fires.

**Typical Uses:** For protecting sensitive electronic equipment in offices, classrooms, churches, parking garages, and hotel/motel assembly halls and guest areas. For protecting sensitive electronic equipment in businesses such as retail stores, light manufacturing facilities, research facilities, auto dealerships, vehicle/aircraft/marine service centers, and manufacturing processes such as painting, dipping, and coating.

Recommended for use on sensitive electronic equipment.

Third Party Approvals For Peace Of Mind



Canadian Part Numbers are shown in parentheses.

Model	451	456	461	466
Description	5 lb. Carbon Dioxide	10 lb. Carbon Dioxide	15 lb. Carbon Dioxide	20 lb. Carbon Dioxide
Pt. #	45100 (45191)	45600 (45691)	46100 (46191)	46600 (46691)
Agent Capacity	5 lb. (2.27 kg)	10 lb. (4.54 kg)	15 lb. (6.8 kg)	20 lb. (9.07 kg)
UL/ULC Rating	5-B:C	10-B:C	10-B:C	10-B:C
Temperature Range	-22° to 120°F (-30° to 49°C)			
Discharge Time	9 sec	9 sec	15 sec	20 sec
Discharge Range ft (m)	4-8 (1.2-2.4)	4-8 (1.2-2.4)	4-8 (1.2-2.4)	4-8 (1.2-2.4)
USCG Approval	Type B:C Size I	Type B:C Size I	Type B:C Size II	Type B:C Size II
Ship Weight	13.75 lb. (6.3 kg)	27.75 lb. (12.6 kg)	37.75 lb. (17.1 kg)	49 lb. (22.2 kg)
Unit Height	17.375 in (44.1 cm)	19.75 in (50.2 cm)	26.375 in (67 cm)	26.875 in (68.2 cm)
Unit Width	8.25 in (21 cm)	12 in (30.5 cm)	12 in (30.5 cm)	13 in (33 cm)
Unit Diameter	5.25 in (13.3 cm)	6.89 in (17.5 cm)	6.89 in (17.5 cm)	8 in (20.3 cm)



## Water And Water Mist

Our Water and Water Mist units provide effective and economical protection for common combustible fires.

Both the Water and Water Mist extinguishers have Schrader Valves incorporated into the Valve Assemblies for easy recharge.

The Water Mist extinguisher is non-magnetic and third party tested to be safe to use in proximity to MRI equipment rated to three tesla. It uses deionized water and incorporates a unique spray nozzle that makes it safe to use on energized electrical equipment (rated for both Class A and Class C fires). The Water Mist is considered to be the #1 choice for use in hospitals and libraries.

The Water extinguisher uses ordinary water as its extinguishing agent and can be pressurized with regular air making recharging the extinguisher simple and economical. It is shipped empty for filling and pressurizing on site.

**Typical Uses:** For common combustible fires in offices, classrooms, churches, parking garages, and hotel/motel assembly halls and guest areas. For common combustible fires in businesses such as retail stores, light manufacturing facilities, research facilities, auto dealerships, vehicle/ aircraft/marine service centers, and manufacturing processes such as painting, dipping, and coating.

Model	500	WM250
Description	Stored Pressure Water	Stored Pressure Water Spray
Part #	50000 (50000 ULC)	51000 (51000 ULC)
Cylinder/Valve Material	Stainless Steel/Plated Brass	Stainless Steel/Plated Brass
Agent Capacity	2.5 gallons (9.6 liters)	2.5 gallons (9.6 liters)
UL/ULC Rating	2-A	2-A:C
Temperature Range	40° to 120°F (4.4° to 49°C)	40° to 120°F (4.4° to 49°C)
Discharge Time	50 sec	73 sec
Discharge Range	45 to 55 ft. (13.7 to 16.8m)	5 to 10 ft. (1.5 to 3m)
Operating Pressure	100 psi (689 kPa)	100 psi (689 kPa)
Mounting Type	Wall	Wall
USCG Approval	Type A Size II	N/A
Ship Weight	Empty: 8.3 lb. (3.7 kg)	Full: 30.25 lb. (13.7 kg)
Unit Height	24.5 in (62.2 cm)	28 in (78.1 cm)
Unit Width (Incl. Hose)	9 in (22.9 cm)	14 in (35.6 cm)
Unit Diameter	7 in (17.8 cm)	7 in (17.8 cm)

Third Party Approvals For Peace Of Mind





### Wet Chemical - Class K

Our Wet Chemical extinguishers contain a blend of Potassium Acetate and Potassium Citrate that is extremely effective in suppressing high temperature fires involving cooking oils and grease.

The units incorporate a spray nozzle that ensures the agent is applied gently to the burning oil thus preventing splashing. It's unique cooling properties deliver exceptional heat absorption ensuring the fire remains out.

Wet Chemical is suitable for use on Class A and K fires.

**Typical Uses:** For protecting cooking oil and grease fires in commercial kitchens. This extinguisher is designed to complement existing pre-engineered hood systems.



Canadian Part Number is shown in parentheses.

Model	WC-6L	WC-2.5
Description	6 Liter Wet Chemical	2.5 Gallon Wet Chemical
Part #	50006 (50006ULC)	50025 (50025ULC)
Cylinder/Valve Material	Stainless Steel/Plated Brass	Stainless Steel/Plated Brass
UL/ULC Rating	1-A:K	1-A:K
Temperature Range	40° to 120° (4.4° to 49°C)	40° to 120° (4.4° to 49°C)
Discharge Time	54 secs.	74 secs.
Mounting Type	Wall	Wall
Operating Pressure	100 psi (690 kPa)	100 psi (690 kPa)
Ship Weight	22.75 lb. (10.3 kg)	30 lb. (13.6 kg)
Unit Height	19.25 in (48.9 cm)	24.5 in (62.2 cm)
Unit Width (incl. hose)	9 in (22.9 cm)	9 in (22.9 cm)
Cylinder Diameter	7 in (17.8 cm)	7 in (17.8 cm)



Used in conjunction with Kitchen Mister Fire Suppression System. Page 24 & 25.

Third Party Approvals For Peace Of Mind





<b>Model</b>	<b>30D</b>
<b>Part #</b>	52000
<b>Agent Capacity</b>	30 lb. (13.6 kg)
<b>FM Rating</b>	D
<b>Discharge Time</b>	28 sec
<b>Operating Pressure</b>	195 psi (1344 kPa)
<b>Mounting Type</b>	Wall
<b>USCG Approval</b>	N/A
<b>Ship Weight</b>	55 lb. (24.95 kg)
<b>Unit Height</b>	33 in (83.8 cm)
<b>Unit Width (Incl Hose)</b>	16 in (40.6 cm)
<b>Unit Diameter</b>	8 in (20.3 cm)



## Combustible Metals - Class D

Specifically designed for use on combustible metal fires, this extinguisher features a discharge assembly that keeps the operator at a safe distance while providing accurate application of the agent on the fire.

From the heat of the fire, the sodium chloride based agent forms a crust to exclude air from the burning material. Suitable for use on Class D fires such as those involving magnesium, sodium, potassium and sodium-potassium alloys.

There is data showing that zirconium, uranium, titanium, and powdered aluminum fires can be controlled and extinguished with this unique extinguisher.

**Typical Uses:** Metal production and machining operations.





Made for the harshest of environments, the Offshore product line of extinguishers comes with features specifically designed to keep them on watch and in shipshape operating condition.

Offshore extinguishers... the perfect storm of performance, durability, and value.

#### Key Features:

- Rugged steel cylinders/frames, stainless steel operating levers, and plated brass valves.
- The agent cylinders and the wheeled model frames have a galvanizing compound undercoat, baked-on enamel top coat, and protective clear coat finish to prevent corrosion and fading from exposure to sun & sea – passes 3000 hour salt spray test.
- All nameplate labels have UV resistant lamination to prevent sun damage.
- Plated brass guard around the pressure gauge and a vinyl ring on the cylinder bottom of the hand portable extinguishers prevent the kind of damage that would deep-six any other fire extinguisher.
- Meets DOT and Transport Canada requirements.
- UL and ULC Listed with the same high fire ratings of Buckeye's standard models.
- All hand portable extinguishers are USCG Approved with noted marine bracket.
- Trilingual nameplate labels – English, Spanish, and French

## The Offshore Line

Announcing the latest addition to a stellar line of fire extinguishers.







## Offshore Wheeled Fire Extinguisher Specifications

Model	Part No.	Agent Type	Agent Capacity	UL/ULC Rating	Discharge Time	Discharge Range	Unit Wt. (lbs.)	Hose Length	Wheel Type Dia./Width	Wheel Dims.
OS A-50-SP	30360	ABC	50 lbs.	10A:160B:C	36 sec.	25-35 ft.	154	25 ft.	Rubber	12.3 x 3.5 ins.
OS A-150-SP	31360	ABC	125 lbs.	30A:240B:C	47 sec.	30-40 ft.	300	50 ft.	Rubber	16 x 4 ins.
OS A-150-PT	31490	ABC	125 lbs.	30A:240B:C	43 sec.	30-40 ft.	325	50 ft.	Rubber	16 x 4 ins.
OS A-150-RG	31460	ABC	125 lbs.	30A:240B:C	44 sec.	30-40 ft.	387	50 ft.	Rubber	16 x 4 ins.
OS A-150-RG	31470	ABC	125 lbs.	30A:240B:C	44 sec.	30-40 ft.	422	50 ft.	Steel	36 x 2.5 ins.
OS A-150-RG	31480	ABC	125 lbs.	30A:240B:C	44 sec.	30-40 ft.	434	50 ft.	Steel Wheel Rubber Tread	36 x 2.5 ins.
OS A-350-PT	32180	ABC	300 lbs.	30A:320B:C	53 sec.	30-40 ft.	657	50 ft.	Steel	36 x 6 ins.
OS A-350-PT	32190	ABC	300 lbs.	30A:320B:C	53 sec.	30-40 ft.	683	50 ft.	Steel Wheel Rubber Tread	36 x 6 ins.
OS A-350-RG	32160	ABC	300 lbs.	30A:320B:C	52 sec.	30-40 ft.	780	50 ft.	Steel	36 x 6 ins.
OS A-350-RG	32170	ABC	300 lbs.	30A:320B:C	52 sec.	30-40 ft.	806	50 ft.	Steel Wheel Rubber Tread	36 x 6 ins.
OS K-50-SP	30760	PK	50 lbs.	160B:C	36 sec.	25-35 ft.	154	25 ft.	Rubber	12.3 x 3.5 ins.
OS K-150-SP	31760	PK	125 lbs.	320B:C	54 sec.	30-40 ft.	300	50 ft.	Rubber	16 x 4 ins.
OS K-150-PT	31590	PK	125 lbs.	320B:C	54 sec.	30-40 ft.	325	50 ft.	Rubber	16 x 4 ins.
OS K-150-RG	31560	PK	125 lbs.	320B:C	55 sec.	30-40 ft.	387	50 ft.	Rubber	16 x 4 ins.
OS K-150-RG	31570	PK	125 lbs.	320B:C	55 sec.	30-40 ft.	422	50 ft.	Steel	36 x 2.5 ins.
OS K-150-RG	31580	PK	125 lbs.	320B:C	55 sec.	30-40 ft.	434	50 ft.	Steel Wheel Rubber Tread	36 x 2.5 ins.
OS K-350-PT	32380	PK	300 lbs.	320B:C	62 sec.	30-40 ft.	657	50 ft.	Steel	36 x 6 ins.
OS K-350-PT	32390	PK	300 lbs.	320B:C	62 sec.	30-40 ft.	683	50 ft.	Steel Wheel Rubber Tread	36 x 6 ins.
OS K-350-RG	32360	PK	300 lbs.	320B:C	57 sec.	30-40 ft.	780	50 ft.	Steel	36 x 6 ins.
OS K-350-RG	32370	PK	300 lbs.	320B:C	57 sec.	30-40 ft.	806	50 ft.	Steel Wheel Rubber Tread	36 x 6 ins.
OS W-65	76501	Halotron	65 lbs.	4A:60B:C	20 sec.	15-25 ft.	252	25 ft.	Rubber	16 x 4 ins.
OS W-150	71501	Halotron	150 lbs.	10A:120B:C	30 sec.	23-36 ft.	396	50 ft.	Rubber	16 x 4 ins.

USCG APPROVED MODELS – 30360, 31360, 30760, and 31760

SP = Stored Pressure

PT = Pressure Transfer

RG = Regulated Pressure

### Operating Temperature

Dry Chemical Models: -65°F to 120°F

Halotron Models: -40°F to 120°F

### Operating Pressure

Hand Portable: 195 psi

Dry Chemical Wheeled: 240 psi

Halotron Wheeled: 150 psi

## Offshore Hand Portable Fire Extinguisher Specifications

Model	Part No.	Agent Type	Agent Capacity	UL/ULC Rating	Discharge Time	Discharge Range	Shipping Wt. (lbs.)
OS 5 ABC	10960	ABC	5 lbs.	3A:40B:C	14 sec.	12-18 ft.	10 lbs.
OS 10 ABC	11360	ABC	10 lbs.	4A:80B:C	22 sec.	15-21 ft.	18.25 lbs.
OS 20 ABC	12360	ABC	20 lbs.	10A:120B:C	27 sec.	15-21 ft.	33.5 lbs.
OS 30 ABC	13360	ABC	30 lbs.	10A:160B:C	32 sec.	25-30 ft.	52.25 lbs.
OS 5 PK	11260	PK	5 lbs.	20B:C	9 sec.	12-18 ft.	10 lbs.
OS 10 PK	11760	PK	10 lbs.	80B:C	22 sec.	15-21 ft.	18.25 lbs.
OS 20 PK	12760	PK	20 lbs.	120B:C	27 sec.	15-21 ft.	33.5 lbs.
OS 30 PK	13760	PK	30 lbs.	160B:C	32 sec.	25-30 ft.	52.25 lbs.

All models are USCG Approved for marine vessel use when used in conjunction with the bracket specified on the label



## Automatic Spot Protection

### Vertical Mini-Guards

Designed for single unit installations, the Buckeye Fire Equipment Mini-Guard automatic spot protection extinguishers provide supplementary fire protection suitable for some local and total flood applications. These units are not intended as a substitute for automatic sprinkler systems, fixed pre-engineered or engineered extinguishing systems and are not intended to be multiple mounted.

The Mini-Guard automatic spot protection extinguishers are designed, constructed, and tested to the same engineering standards as our portable fire extinguishers. Available in horizontal or vertical configurations, the units can be charged with multipurpose (ABC) dry chemical or Halotron agents and are fitted with a detection sprinkler head that is rated at 165° F.

**Typical Uses:** The dedicated protection of specialized equipment used in business or manufacturing processes or for specific fire risk areas such as flammable liquid storage rooms (dry chemical) and small electronic data storage rooms (Halotron).



Model	MULTIPURPOSE (ABC) DRY CHEMICAL				HALOTRON	
Agent Type	ABC Dry Chemical	ABC Dry Chemical	ABC Dry Chemical	ABC Dry Chemical	Halotron I	Halotron I
Part #	80250	80501	81001	82001	87100	87200
Agent Capacity	2.5 lb. (1.13 kg)	5 lb. (2.3 kg)	10 lb. (4.5 kg)	20 lb. (9.1 kg)	18 lb. (8.2 kg)	25 lb. (11.3 kg)
Ship Weight	4 lb. (1.8 kg)	11 lb. (5 kg)	19 lb. (8.6 kg)	36 lb. (16.3 kg)	29 lb. (13.2 kg)	42 lb. (19 kg)
Operating Pressure	100 psi (689 kPa)	100 psi (689 kPa)	195 psi (1344 kPa)	195 psi (1344 kPa)	100 psi (689 kPa)	100 psi (689 kPa)
Unit Length	15.25 in (38.7 cm)	17.25 in (43.8 cm)	17.625 in (44.8 cm)	21.875 in (55.6 cm)	17.875 in (45.4 cm)	21.875 in (55.6 cm)
Unit Diameter	3.375 in (8.6 cm)	4.25 in (10.8 cm)	6 in (15.2 cm)	7.5 in (19.1 cm)	7 in (17.8 cm)	7.5 in (19.1 cm)
Max Total Flood Volume	120 cu. ft.	180 cu. ft.	1300 cu. ft.	2184 cu. ft.	500 cu. ft.	700 cu. ft.
Max Total Flood Height Above Hazard	7.5 ft.	7.5 ft.	13 ft.	14 ft.	8 ft.	10 ft.
Local Application Coverage Areas	4 ft. x 4 ft.	4 ft. x 6 ft.	10 ft. x 10 ft.	12 ft. x 13 ft.	4 ft. x 4 ft.	6 ft. x 6 ft.

Maximum Local Application - Height Above Hazard = 4 Feet for all Models



## Automatic Spot Protection

### Horizontal Mini-Guards

Designed for single unit installations, the Buckeye Fire Equipment Mini-Guard automatic spot protection extinguishers provide supplementary fire protection suitable for some local and total flood applications. These units are not intended as a substitute for automatic sprinkler systems, fixed pre-engineered or engineered extinguishing systems and are not intended to be multiple mounted.



The Mini-Guard automatic spot protection extinguishers are designed, constructed, and tested to the same engineering standards as our portable fire extinguishers. Available in horizontal or vertical configurations, the units can be charged with multipurpose (ABC) dry chemical or Halotron agents and are fitted with a detection sprinkler head that is rated at 165° F.

**Typical Uses:** The dedicated protection of specialized equipment used in business or manufacturing processes or for specific fire risk areas such as flammable liquid storage rooms (dry chemical) and small electronic data storage rooms (Halotron).

*Note: Requires a bracket for mounting (sold separately, see page 26).*

Model	MULTIPURPOSE (ABC) DRY CHEMICAL				HALOTRON		
	Agent Type	ABC Dry Chemical	ABC Dry Chemical	ABC Dry Chemical	ABC Dry Chemical	Halotron I	Halotron I
Part #	80251	80521	81021	82021	87105	87205	
Agent Capacity	2.5 lb. (1.13 kg)	5 lb. (2.3 kg)	10 lb. (4.5 kg)	20 lb. (9.1 kg)	18 lb. (8.2 kg)	25 lb. (11.3 kg)	
Ship Weight	4 lb. (1.8 kg)	11 lb. (5 kg)	19 lb. (8.6 kg)	36 lb. (16.3 kg)	29 lb. (13.2 kg)	42 lb. (19 kg)	
Operating Pressure	100 psi (689 kPa)	100 psi (689 kPa)	195 psi (1344 kPa)	195 psi (1344 kPa)	100 psi (689 kPa)	100 psi (689 kPa)	
Unit Length	14.25 in (36.2 cm)	17.25 in (43.8 cm)	20.875 in (53 cm)	21.875 in (55.6 cm)	17.875 in (45.4 cm)	21.875 in (55.6 cm)	
Unit Diameter	3.375 in (8.6 cm)	4.25 in (10.8 cm)	5.125 in (13 cm)	7.5 in (19.1 cm)	7 in (17.8 cm)	7.5 in (19.1 cm)	
Max Total Flood Volume	120 cu. ft.	180 cu. ft.	1300 cu. ft.	2184 cu. ft.	500 cu. ft.	700 cu. ft.	
Max Total Flood Height Above Hazard	7.5 ft.	7.5 ft.	13 ft.	14 ft.	8 ft.	10 ft.	
Local Application Coverage Areas	4 ft. x 4 ft.	4 ft. x 6 ft.	10 ft. x 10 ft.	12 ft. x 13 ft.	4 ft. x 4 ft.	6 ft. x 6 ft.	
Mounting Bracket	700287	700270	700226	700229	700228	700229	

Maximum Local Application - Height Above Hazard = 4 Feet for all Models



## Wheeled Halotron

Our Wheeled Halotron units are designed to deliver exceptional performance whatever the environment. DOT/TC approved cylinders, rugged frames and semi-pneumatic tires are key features of these UL/ULC approved extinguishers. Tow Loops can be added upon request.

Halotron is a residue-free, non-conductive agent that is suitable for use on Class A, Class B and Class C fires.

**Typical Uses:** For protecting sensitive electronic equipment in research facilities, vehicle/aircraft/marine service centers, and flight lines.

Third Party Approvals For Peace Of Mind



Canadian Part Numbers are shown in parentheses.

Model	W-65	W-150
Description	65 lb. Stored Pressure	150 lb. Stored Pressure
Part #	76500 (76505)	71500 (71505)
Agent Capacity	65 lb. (29.5 kg)	150 lb. (68 kg)
UL/ULC Rating	4A:60B:C	10A:120B:C
Discharge Time	20 sec	30 sec
Operating Temperature Range	-40° to 120°F (-40° to 49°C)	-40° to 120°F (-40° to 49°C)
Range	15-25 ft. (4.6-7.6 m)	23-36 ft. (7-10.7 m)
Unit Weight	252 lb. (114 kg)	396 lb. (180 kg)
Unit Height x Width x Depth	50" x 24" x 41.5" (127 x 61 x 105 cm)	62" x 24" x 41.5" (157.5 x 61 x 105 cm)
Hose Diameter & Length	.75 in x 25 ft. (1.9 cm x 7.6 m)	.75" x 50 ft. (1.9 cm x 15.2 m)





## Wheeled Dry Chemical

With our comprehensive line, Buckeye Wheeled Dry Chemical fire extinguishers have your large-scale fire protection needs covered. Available in three size capacities with three choices of extinguishing agent and three different operational design configurations, the best match for your hazard protection needs can be accurately selected, maximizing the fire safety of your operation.

Designed for one man operation these units are easily transportable through doorways and over rough terrain. Tow Loops can be added to your selection if you need easy vehicle transport capability.

All models are rechargeable and meet relevant UL, ULC, TC & DOT requirements. Selected models have US Coast Guard Approval.

Stationary models are also available.

**Typical Uses:** Offshore rigs, ship docks, refineries, chemical plants, aircraft ramps, remote construction sites, large laboratories, processing plants, storage and loading areas. Not for use on sensitive electronic equipment.

Dry chemical wheeled units are available for Class A, Class B and Class C fires.

*Third Party Approvals For Peace Of Mind*



LISTED

LISTED

DOT  
Compliant

USCG  
Approved



## Wheeled Dry Chemical - Product Specification

SP = Stored Pressure RG = Regulated Pressure PT = Pressure Transfer

Canadian Part Numbers are shown in parentheses.

MODEL	TYPE	PART NUMBER	AGENT CAPACITY	UL/ULC RATING	DISCHARGE TIME	DISCHARGE RANGE	UNIT WEIGHT
A-50-SP	ABC Dry Chemical	30010 (30015)	50 lb. (22.7 kg)	10-A:160-B:C	36 sec	25-35 ft. (7.6-10.7 m)	154 lb. (70 kg)
A-150-SP	ABC Dry Chemical	30110 (30115)	125 lb. (56.7 kg)	30-A:240-B:C	47 sec	30-40 ft. (9.1-12.2 m)	300 lb. (136 kg)
A-150-RG	ABC Dry Chemical	31120 (31125)	125 lb. (56.7 kg)	30-A:240-B:C	44 sec	30-40 ft. (9.1-12.2 m)	387 lb. (176 kg)
A-150-RG	ABC Dry Chemical	31140 (31145)	125 lb. (56.7 kg)	30-A:240-B:C	44 sec	30-40 ft. (9.1-12.2 m)	422 lb. (191 kg)
A-150-RG	ABC Dry Chemical	31150 (31155)	125 lb. (56.7 kg)	30-A:240-B:C	44 sec	30-40 ft. (9.1-12.2 m)	434 lb. (197 kg)
A-150-PT	ABC Dry Chemical	31110 (31115)	125 lb. (56.7 kg)	30-A:240-B:C	43 sec	30-40 ft. (9.1-12.2 m)	325 lb. (147 kg)
A-350-RG	ABC Dry Chemical	32120 (32125)	300 lb. (136 kg)	30-A:320-B:C	52 sec	30-40 ft. (9.1-12.2 m)	780 lb. (354 kg)
A-350-RG	ABC Dry Chemical	32140 (32145)	300 lb. (136 kg)	30-A:320-B:C	52 sec	30-40 ft. (9.1-12.2 m)	806 lb. (366 kg)
A-350-PT	ABC Dry Chemical	32110 (32115)	300 lb. (136 kg)	30-A:320-B:C	53 sec	30-40 ft. (9.1-12.2 m)	657 lb. (298 kg)
A-350-PT	ABC Dry Chemical	32130 (32135)	300 lb. (136 kg)	30-A:320-B:C	53 sec	30-40 ft. (9.1-12.2 m)	683 lb. (310 kg)
S-150-RG	Standard Dry Chemical	31220 (31225)	150 lb. (68 kg)	240-B:C	48 sec	30-40 ft. (9.1-12.2 m)	412 lb. (187 kg)
S-150-RG	Standard Dry Chemical	31240 (31245)	150 lb. (68 kg)	240-B:C	48 sec	30-40 ft. (9.1-12.2 m)	447 lb. (203 kg)
S-150-RG	Standard Dry Chemical	31250 (31255)	150 lb. (68 kg)	240-B:C	48 sec	30-40 ft. (9.1-12.2 m)	459 lb. (208 kg)
S-150-PT	Standard Dry Chemical	31210 (31215)	150 lb. (68 kg)	240-B:C	43 sec	30-40 ft. (9.1-12.2 m)	350 lb. (159 kg)
S-350-RG	Standard Dry Chemical	32220 (32225)	350 lb. (159 kg)	320-B:C	59 sec	30-40 ft. (9.1-12.2 m)	830 lb. (376 kg)
S-350-RG	Standard Dry Chemical	32240 (32245)	350 lb. (159 kg)	320-B:C	59 sec	30-40 ft. (9.1-12.2 m)	856 lb. (388 kg)
S-350-PT	Standard Dry Chemical	32210 (32215)	350 lb. (159 kg)	320-B:C	50 sec	30-40 ft. (9.1-12.2 m)	707 lb. (321 kg)
S-350-PT	Standard Dry Chemical	32230 (32235)	350 lb. (159 kg)	320-B:C	50 sec	30-40 ft. (9.1-12.2 m)	733 lb. (333 kg)
K-50-SP	Purple K Dry Chemical	30030 (30035)	50 lb. (22.7 kg)	160-B:C	36 sec	25-35 ft. (7.6-10.7 m)	154 lb. (70 kg)
K-150-SP	Purple K Dry Chemical	30310 (30315)	125 lb. (56.7 kg)	320-B:C	54 sec	30-40 ft. (9.1-12.2 m)	300 lb. (136 kg)
K-150-RG	Purple K Dry Chemical	31320 (31325)	125 lb. (56.7 kg)	320-B:C	55 sec	30-40 ft. (9.1-12.2 m)	387 lb. (176 kg)
K-150-RG	Purple K Dry Chemical	31340 (31345)	125 lb. (56.7 kg)	320-B:C	55 sec	30-40 ft. (9.1-12.2 m)	422 lb. (191 kg)
K-150-RG	Purple K Dry Chemical	31350 (31355)	125 lb. (56.7 kg)	320-B:C	55 sec	30-40 ft. (9.1-12.2 m)	434 lb. (197 kg)
K-150-PT	Purple K Dry Chemical	31310 (31315)	125 lb. (56.7 kg)	320-B:C	54 sec	30-40 ft. (9.1-12.2 m)	325 lb. (147 kg)
K-350-RG	Purple K Dry Chemical	32320 (32325)	300 lb. (136 kg)	320-B:C	57 sec	30-40 ft. (9.1-12.2 m)	780 lb. (354 kg)
K-350-RG	Purple K Dry Chemical	32340 (32345)	300 lb. (136 kg)	320-B:C	57 sec	30-40 ft. (9.1-12.2 m)	806 lb. (366 kg)
K-350-PT	Purple K Dry Chemical	32310 (32315)	300 lb. (136 kg)	320-B:C	62 sec	30-40 ft. (9.1-12.2 m)	657 lb. (298 kg)
K-350-PT	Purple K Dry Chemical	32330 (32335)	300 lb. (136 kg)	320-B:C	62 sec	30-40 ft. (9.1-12.2 m)	683 lb. (310 kg)

US Coast Guard Approved Models - Part numbers 30010, 30110, 30030, 30310 & 31210



## Wheeled Dry Chemical - Product Specification

UNIT HEIGHT	UNIT WIDTH	UNIT DEPTH	HOSE LENGTH & DIAMETER	WHEEL TYPE	WHEEL DIAMETER
47 inches (119 cm)	24 inches (61 cm)	26.5 inches (67 cm)	25 ft. x .50 in. (7.6 m x 1.3 cm)	Rubber	12.3 in. x 3.5 in. (31.3 cm x 8.9 cm)
51 inches (128 cm)	26 inches (66 cm)	38 inches (96.5 cm)	50 ft. x .75 in. (15.2 m x 1.9 cm)	Rubber	16 in. x 4 in. (40.6 cm x 10.2 cm)
50 inches (127 cm)	24 inches (61 cm)	42 inches (105 cm)	50 ft. x .75 in. (15.2 m x 1.9 cm)	Rubber	16 in. x 4 in. (40.6 cm x 10.2 cm)
55 inches (139 cm)	32 inches (81.3 cm)	46 inches (117 cm)	50 ft. x .75 in. (15.2 m x 1.9 cm)	Steel	36 in. x 2.5 in. (91.4 cm x 6.4 cm)
55 inches (139 cm)	32 inches (81.3 cm)	46 inches (117 cm)	50 ft. x .75 in. (15.2 m x 1.9 cm)	Steel with rubber tread	36 in. x 2.5 in. (91.4 cm x 6.4 cm)
50 inches (127 cm)	24 inches (61 cm)	42 inches (105 cm)	50 ft. x .75 in. (15.2 m x 1.9 cm)	Rubber	16 in. x 4 in. (40.6 cm x 10.2 cm)
58 inches (147 cm)	36 inches (91.4 cm)	48 inches (122 cm)	50 ft. x 1 in. (15.2 m x 2.5 cm)	Steel	36 in. x 6 in. (91.4 cm x 15.2 cm)
58 inches (147 cm)	36 inches (91.4 cm)	48 inches (122 cm)	50 ft. x 1 in. (15.2 m x 2.5 cm)	Steel with rubber tread	36 in. x 6 in. (91.4 cm x 15.2 cm)
58 inches (147 cm)	36 inches (91.4 cm)	48 inches (122 cm)	50 ft. x 1 in. (15.2 m x 2.5 cm)	Steel	36 in. x 6 in. (91.4 cm x 15.2 cm)
58 inches (147 cm)	36 inches (91.4 cm)	48 inches (122 cm)	50 ft. x 1 in. (15.2 m x 2.5 cm)	Steel with rubber tread	36 in. x 6 in. (91.4 cm x 15.2 cm)
50 inches (127 cm)	24 inches (61 cm)	42 inches (105 cm)	50 ft. x .75 in. (15.2 m x 1.9 cm)	Rubber	16 in. x 4 in. (40.6 cm x 10.2 cm)
55 inches (139 cm)	32 inches (81.3 cm)	46 inches (117 cm)	50 ft. x .75 in. (15.2 m x 1.9 cm)	Steel	36 in. x 2.5 in. (91.4 cm x 6.4 cm)
55 inches (139 cm)	32 inches (81.3 cm)	46 inches (117 cm)	50 ft. x .75 in. (15.2 m x 1.9 cm)	Steel with rubber tread	36 in. x 2.5 in. (91.4 cm x 6.4 cm)
50 inches (127 cm)	24 inches (61 cm)	42 inches (105 cm)	50 ft. x .75 in. (15.2 m x 1.9 cm)	Rubber	16 in. x 4 in. (40.6 cm x 10.2 cm)
58 inches (147 cm)	36 inches (91.4 cm)	48 inches (122 cm)	50 ft. x 1 in. (15.2 m x 2.5 cm)	Steel	36 in. x 6 in. (91.4 cm x 15.2 cm)
58 inches (147 cm)	36 inches (91.4 cm)	48 inches (122 cm)	50 ft. x 1 in. (15.2 m x 2.5 cm)	Steel with rubber tread	36 in. x 6 in. (91.4 cm x 15.2 cm)
58 inches (147 cm)	36 inches (91.4 cm)	48 inches (122 cm)	50 ft. x 1 in. (15.2 m x 2.5 cm)	Steel	36 in. x 6 in. (91.4 cm x 15.2 cm)
58 inches (147 cm)	36 inches (91.4 cm)	48 inches (122 cm)	50 ft. x 1 in. (15.2 m x 2.5 cm)	Steel with rubber tread	36 in. x 6 in. (91.4 cm x 15.2 cm)
47 inches (119 cm)	24 inches (61 cm)	26.5 inches (67 cm)	25 ft. x .50 in. (7.6 m x 1.3 cm)	Rubber	12.3 in. x 3.5 in. (31.3 cm x 8.9 cm)
51 inches (128 cm)	26 inches (66 cm)	38 inches (96.5 cm)	50 ft. x .75 in. (15.2 m x 1.9 cm)	Rubber	16 in. x 4 in. (40.6 cm x 10.2 cm)
50 inches (127 cm)	24 inches (61 cm)	42 inches (105 cm)	50 ft. x .75 in. (15.2 m x 1.9 cm)	Rubber	16 in. x 4 in. (40.6 cm x 10.2 cm)
55 inches (139 cm)	32 inches (81.3 cm)	46 inches (117 cm)	50 ft. x .75 in. (15.2 m x 1.9 cm)	Steel	36 in. x 2.5 in. (91.4 cm x 6.4 cm)
55 inches (139 cm)	32 inches (81.3 cm)	46 inches (117 cm)	50 ft. x .75 in. (15.2 m x 1.9 cm)	Steel with rubber tread	36 in. x 2.5 in. (91.4 cm x 6.4 cm)
50 inches (127 cm)	24 inches (61 cm)	42 inches (105 cm)	50 ft. x .75 in. (15.2 m x 1.9 cm)	Rubber	16 in. x 4 in. (40.6 cm x 10.2 cm)
58 inches (147 cm)	36 inches (91.4 cm)	48 inches (122 cm)	50 ft. x 1 in. (15.2 m x 2.5 cm)	Steel	36 in. x 6 in. (91.4 cm x 15.2 cm)
58 inches (147 cm)	36 inches (91.4 cm)	48 inches (122 cm)	50 ft. x 1 in. (15.2 m x 2.5 cm)	Steel with rubber tread	36 in. x 6 in. (91.4 cm x 15.2 cm)
58 inches (147 cm)	36 inches (91.4 cm)	48 inches (122 cm)	50 ft. x 1 in. (15.2 m x 2.5 cm)	Steel	36 in. x 6 in. (91.4 cm x 15.2 cm)
58 inches (147 cm)	36 inches (91.4 cm)	48 inches (122 cm)	50 ft. x 1 in. (15.2 m x 2.5 cm)	Steel with rubber tread	36 in. x 6 in. (91.4 cm x 15.2 cm)

Operating Temperature Range for all wheeled dry chemical extinguishers is -65° to 120°F (-54° to 49°C).



## Wheeled Carbon Dioxide

Our Wheeled Carbon Dioxide extinguishers are designed for one-man operation and are constructed with spun steel cylinders and plated brass valve assemblies. DOT/TC approved cylinders, rugged frames and solid rubber tires are key features of these UL/ULC approved units.

Carbon Dioxide is a residue-free agent and is suitable for use on Class B and Class C fires.

**Typical Uses:** For protecting sensitive electronic equipment in refineries, shipboard, laboratories, construction sites, chemical plants and manufacturing facilities.

Third Party Approvals For Peace Of Mind



Model	C-50-SE	C-100-SE
Description	50 lb. CO2	100 lb. CO2
Part #	35050 (35091)	35100 (35191)
Agent Capacity	50 lb. (22.68 kg)	100 lb. (45.36 kg)
UL Rating	20-B:C	20-B:C
USCG Approval	Type B:C Size IV	Type B:C Size V
Operating Temperature Range	-22° to 120°F (-30° to 49°C)	-22° to 120°F (-30° to 49°C)
Discharge Time	40 sec	80 sec
Range	15 ft. (4.6 m)	15 ft. (4.6 m)
Unit Weight	286 lb. (130 kg)	416 lb. (189 kg)
Unit Height x Width x Depth	60" x 31" x 21" (152.4 x 76.2 x 53.3 cm)	65" x 30" x 21" (165.1 x 76.2 x 53.3 cm)
Hose Diameter & Length	.50 in x 15 ft. (1.27 cm x 4.6 m)	.50 in x 40 ft. (1.27 cm x 12.2 m)







## Kitchen Mister - Restaurant Fire Suppression System

### Tested & Listed To UL-300

Open flames, red-hot cooking surfaces, and a heavily grease-laden environment combine to make the modern commercial kitchen a potentially dangerous fire hazard. Kitchen fires spread quickly and have proven to be very difficult to extinguish, making them the leading cause of structural fire damage in the United States.

Protecting the modern commercial kitchen from the ever-present danger of cooking oil and grease fires is the reason we developed The Buckeye Kitchen Mister™ System. Utilizing state of the art misting technology, the Kitchen Mister System has proven to be the most effective fixed kitchen fire extinguishing system ever developed, extinguishing potentially deadly kitchen fires fast, before they can spread

That's why the Kitchen Mister System is quickly becoming the preferred choice of fire protection professionals throughout the world.

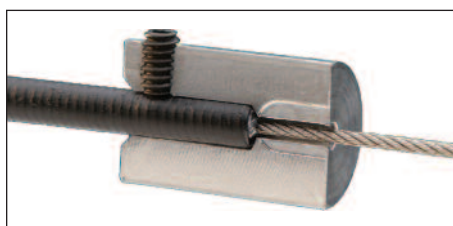
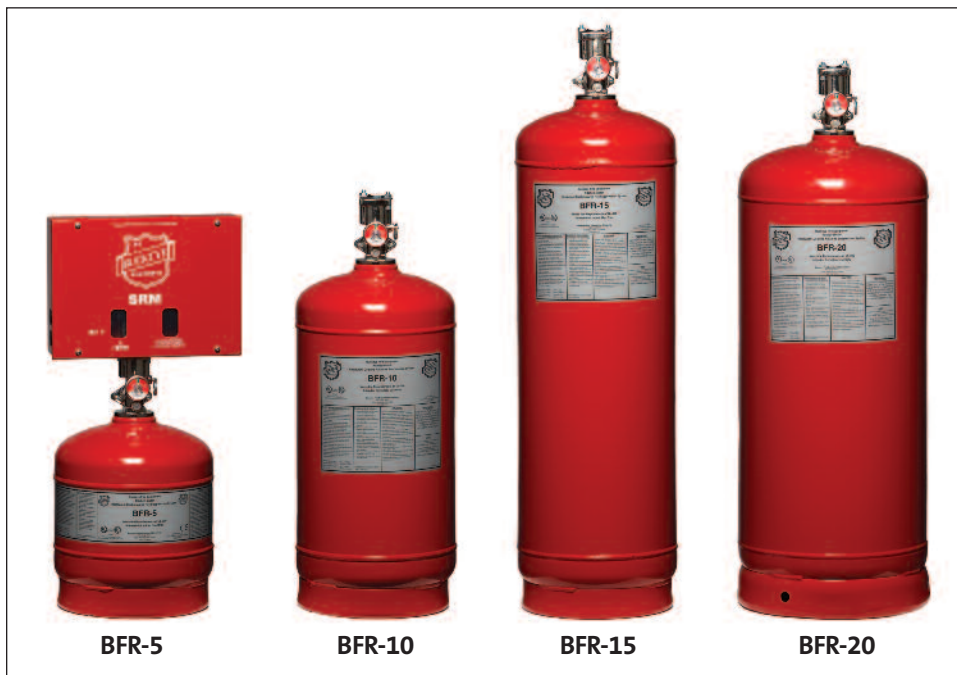
So before fire strikes...**Don't Take Chances -Demand The Best!**

See our companion product (Wet Chemical Class K Portable) used in conjunction with our *Kitchen Mister* System. Page 11.



### System Cylinders

The models BFR-5, BFR-10, BFR-15 and BFR-20 cylinders are designated by flow point capacity (so the BFR-5 supports five (5) flow points) instead of the amount of agent they hold. Recharge is available in 5 and 10 flow point containers so there's never a chance of error.



### Buckeye Shielded Cable

The Kitchen Mister Shielded Cable Interface is used to connect Buckeye Shielded Cable to any standard 1/2 inch conduit connection device. The use of Buckeye Shielded Cable instead of conduit and corner pulleys for connecting the gas valve, remote pull station, and fusible link line to the Systems Releasing Module reduces installation time by up to 50%.

### Listings And Approvals

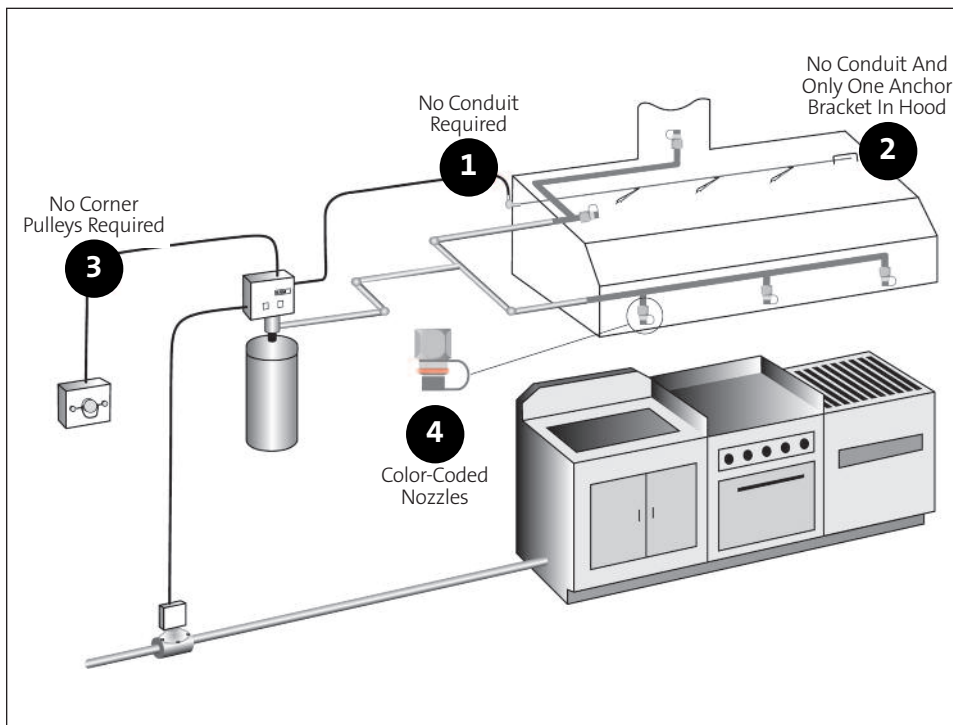
- Listed by Underwriters Laboratories, Inc. (Standard UL-300)
- Listed by Underwriters Laboratories of Canada, Inc.
- Approved by the New York City Fire Department COA #5550
- Complies with NFPA-96 and NFPA-17A Standards
- CE Listed

Third Party Approvals For Peace Of Mind





## Kitchen Mister - Protect with the best & install for less.



### Simplicity Of Design

The constant changes and complicated requirements of most restaurant systems have made design and installation errors a concern of fire protection professionals globally.

The uncomplicated design of the *Kitchen Mister*™ System all but eliminates design and installation errors by combining common sense features and the elimination of confusing design requirements.

### Faster Installations

By eliminating the labor-intensive task of installing conduit, corner pulleys, and detector brackets, the *Kitchen Mister* System dramatically reduces installation time.

The *Kitchen Mister* System is approved for use with Buckeye Shielded Cable instead of traditional conduit and corner pulleys for all system inputs and outputs. This, combined with the elimination of conduit and fusible link brackets in the plenum area, makes installing the *Kitchen Mister* System quick and easy.

### Discharge Nozzles

All five (5) *Kitchen Mister* nozzles come equipped with a color identification band, red, blue, green, white or yellow. This allows for easy identification of the nozzle even when it's installed in difficult locations such as a duct or plenum area. The nozzle is also stamped with its model number.

- 1 No Conduit Required**  
By using Buckeye Shielded Cable no conduit is required for system inputs/outputs. Buckeye Shielded Cable is Listed for the gas valve, detection line, and pull station.
- 2 No Conduit & Only One Anchor Bracket In Hood**  
The *Kitchen Mister* System eliminates the need for conduit in the plenum and requires only one anchor bracket in the exhaust hood.
- 3 No Corner Pulleys Required**  
Buckeye Shielded Cable eliminates the need for corner pulleys, making installation easy and fast.
- 4 Color-Coded Nozzles**  
All *Kitchen Mister* nozzles have a unique color band for easy identification.

### Dealer Friendly Features

- Uncomplicated system design eliminates design and installation errors.
- Installation time significantly reduced.
- Innovative design eliminates conduit and corner pulleys.
- Advanced detection system installs quickly and easily.
- Color-coded nozzles for easy identification.
- Flexible piping requirements allow for unlimited system configurations.
- Best coverage in the industry.
- Online & face to face training.



## Maximum Protection for Every Application



## Foam Concentrates And Equipment

Buckeye Fire Equipment manufactures a complete line of foam agents and hardware that when used in conjunction with one another make an unbeatable fire-fighting combination.

The selection includes bladder tanks, balanced pressure pump skid paks, eductors, monitors, foam chambers, foam makers, high expansion foam generators, foam carts and handline nozzles.

Many of the components can be customized to provide optimal protection for your unique situation. All foam system components are precision made from rugged materials to provide years of dependable service.

### Buckeye's Foam Team Delivers

- The widest selection of Earth-Friendly fire fighting foam concentrates in the industry. Foam concentrates that independent tests have proven to be superior in quality and performance\*.
- A wide selection of foam proportioning hardware and agents designed to maximize performance.
- Knowledgeable, professional in-house foam system design expertise to assist with your fire suppression equipment choice.

*\* Independent tests conducted by Chevron Petroleum and Dow Chemical. Report available on request.*



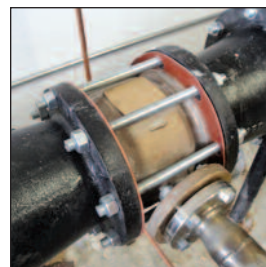
Foam Monitors



Foam Bladder Tanks



Hi-Ex Generators



Foam Concentrate Proportioners



Diesel Pump Skids



## Foam Concentrates

### Protecting the Environment

In addition to delivering superior reliability, Buckeye foam concentrates are all manufactured without EPA reportable components, thus reducing environmental impact.

By using only Earth-Friendly components, we relieve you of the major problems and burdensome paperwork that can result from the discharge of other foam concentrates. This environmental commitment in no way dilutes the fire-fighting effectiveness of Buckeye products.

Every foam concentrate we manufacture is subjected to rigorous quality control standards and comprehensive testing to ensure complete reliability and maximum fire fighting performance.



Foam Concentrate	Model Designation	Part Number 5 Gallon	Part Number 55 Gallon	Part Number 275 Gallon	Listing/ Approvals
Platinum 1% AFFF	BFC-1.1	50325	50330	50335	UL/FM Approved
Platinum 3% AFFF	BFC-3.1	50340	50345	50350	UL/FM Approved
6% AFFF	BFC-6.1	50130	50135	50140	UL
Platinum 3% x 3% AR-AFFF	BFC-33.1	50355	50360	50365	UL/FM Approved
Platinum 3% x 6% AR-AFFF	BFC-36.1	50385	50370	50375	UL
3% Low Temp AFFF	BFC-3LT	50115	50120	50125	UL
3%- 6% Low Temp AR-AFFF	BFC-36LT	50205	50210	50215	Buckeye Quality Assurance
Platinum Class A	BFC-CA.1	50190	50195	50200	USDA Forest Service QPL
2.2% High Expansion	BFC-HX	50235	50240	50245	UL
3% Mil Spec AFFF	BFC-3MS	50285	50290	50295	U.S. Navy QPL (Mil-F-24385)/UL
Training Foam	BFC-TF	50415	50420	50425	Buckeye Quality Assurance



## Gas and Flame Detection

### You Have a New Partner in Detection Systems

Buckeye Fire Equipment Company, a world leader in the fire protection industry, has assembled over 50 years of experience in gas and flame detection, system applications, sales, and service to create the Buckeye Detection Systems Division. Our mission is to provide a state of the art product line that meets our customer's need for a reliable, low maintenance, cost effective, and versatile gas and flame detection system that can seamlessly complement your current fire and/or gas detection equipment.

Our systems are designed to meet the specifications of the end user while maintaining ease of operation. Whether it's a traditional wired system, a versatile wireless system, or a combination of both, Buckeye Detection Systems can offer you the perfect solution for all your hazard detection concerns.

Buckeye Detection Systems is committed to continuing the Buckeye tradition of reliable products, responsive customer service, and knowledgeable technical support that has come to be expected by our customers.

For more information on how Buckeye Detection Systems can help safeguard you, your people, and your business from the real dangers of gas and flames, please contact us.





## Aerosol Fire Suppression

The Buckeye/Stat-X Aerosol Fire Suppression Generators are self-contained fire suppression devices that eliminate the need for expensive pressure vessels and piping, reducing installation time, manpower, and cost. Due to their fast response time, compact size, low fire extinguishing concentration, and environmental safety, the Buckeye/Stat-X fire suppression systems can be used in critical applications across a wide range of industries.

UTILITIES / POWER GEN INDUSTRY

TRANSPORTATION INDUSTRY

MINING INDUSTRY

MANUFACTURING INDUSTRY

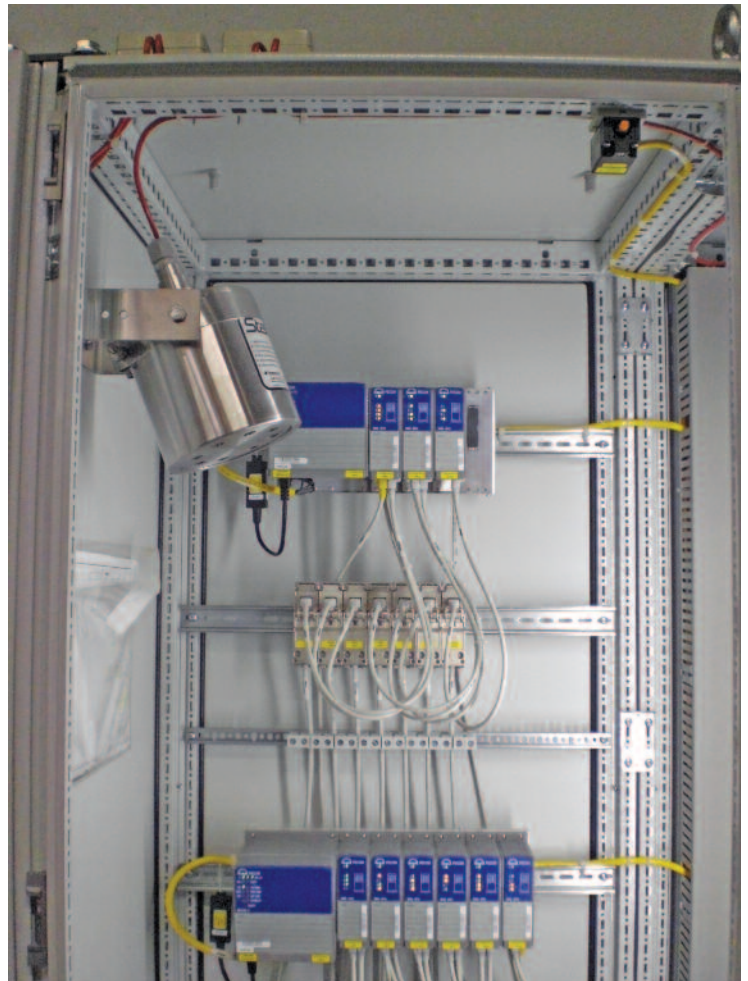
LABORATORIES INDUSTRIES

MARINE & OFFSHORE INDUSTRY

TELECOM / DATA CENTERS

FIRE FIGHTING SERVICES INDUSTRY

**Stat-X**<sup>®</sup>



## Features

- Total flooding system for enclosed spaces
- Fire detection & extinguishing systems or stand-alone suppression- Electrically or thermally activated
- Available in a full range of sizes to meet the specifics of your application
- Provides an exceptional solution in areas where weight and space savings are important
- Listed for Class A (surface), B, & C fire hazards
- Ultra-fine solid particle aerosol mixed with and propelled by self-generated low pressure inert Nitrogen gas
- Environmentally friendly
- 0 ODP, ~0 GWP, 0 Atmospheric Life
- EPA SNAP listed as a halon 1301 replacement
- EPA approved for use in both occupied and unoccupied areas
- Manufactured in the United States to demanding ISO standards



### Dry Chemical



**Purple K**  
Pt. # 61200



**ABC**  
Pt. # 61000



**Standard (BC)**  
Pt. # 61400

Also Available For Class D  
Pt. # 62000

50 lb Containers

### Recharge Agents

Buckeye Fire Equipment carries a full line of extinguishing agent recharge products. Maintain the UL Listing and ensure optimal performance of your Buckeye Fire Equipment products by recharging with our high quality agents, agents made to the same standards and tested to the same requirements as the originals.

See Page 23 for Foam Agents.

### Wet Chemical Class K



**6 Liter Container**  
Pt. # 600872

### Water Mist

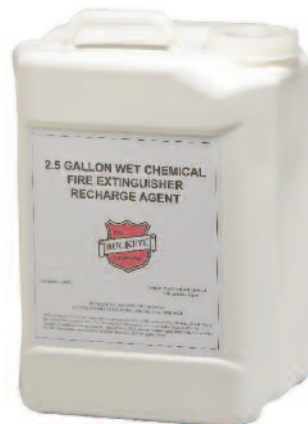


**2.5 Gallon Container**  
Pt. # 600910

### Halotron I



**40 lb. - Pt. # 64040**  
**150 lb. - Pt. # 64150**  
**200 lb. - Pt. # 64200**



**2.5 Gallon Container**  
Pt. # 600871



## Wall Hooks



Pt. # 700202



Pt. # 700203



Pt. # 700204



Pt. # 700247



Pt. # 700249



Pt. # 900935  
Pt. # 900937

Part Number	Suitable for Typical Extinguisher Sizes	Reference Diameter
700202	2.5 lb., 5 lb. & 5.5 lb. Dry Chemical and Halotron	3.25 - 4.25 inches
700203	10 lb. Tall Dry Chemical and 5 lb. CO2	4.75 - 5.5 inches
700204	10 lb. Short Dry Chemical	5.0 - 6.5 inches
700247	20 lb. & 30 lb. Dry Chemical, 10 lb. & 15 lb. CO2, 11 lb. & 15 lb. Halotron	6.75 - 7.5 inches
700249	20 lb. CO2	7.5 - 8.0 inches
900935	Wet Chemical & Water	7.0 inches
900937*	Water Mist	7.0 inches

\*Stainless Steel





## Marine/Vehicle Brackets

Buckeye Fire Equipment manufactures strong and durable mounting hardware for all our portable fire extinguishers.

Whether you are looking for vehicle or marine vessel mounting, or simply to mount on a wall, you can be sure that all our brackets and wall hooks are designed to keep your Buckeye fire extinguisher secure and readily accessible.



Pt. # 700287



Pt. # 700270



Pt. # 700260



Pt. # 700430



Pt. # 700224

Pt. # 700226

Pt. # 700228

Pt. # 700229

Pt. # 700230

Part Number	Model	Suitable for Typical Extinguisher Sizes	Reference Diameter
700287 700287DS	A-2 A2 Double Strap	2.5 lb. Dry Chemical, Halotron & MiniGuard (horizontal) 2.5 lb. Dry Chemical, Halotron & MiniGuard (horizontal)	3.375 inches 3.375 inches
700270 700270TS 700270DS	A-6 A6 Top Strap A6 Double Strap	5 lb. & 5.5 lb. Dry Chemical, Halotron & MiniGuard (horizontal) 5 lb. & 5.5 lb. Dry Chemical, Halotron & MiniGuard (horizontal) 5 lb. & 5.5 lb. Dry Chemical, Halotron & MiniGuard (horizontal)	4.25 inches 4.25 inches 4.25 inches
700260	B-6	5 lb. & 5.5 lb. Dry Chemical and Halotron	4.25 inches
700430	B-12	10 lb. Tall Dry Chemical	5.125 inches
700224	5DC	5 lb. & 5.5 lb. Dry Chemical, Halotron & MiniGuard (horizontal)	4.25 inches
700226	809	10 lb. Tall Dry Chemical, MiniGuard (horizontal) and 5 lb. CO2	5.0 - 5.25 inches
700228	810	10 lb. & 15 lb. CO2. 11 lb. & 15 lb. Halotron. 2.5 gal Water, Water Mist and Wet Chemical (6 liter and 2.5 gallon) 18 lb. MiniGuard (horizontal), 13 lb. High Flow	6.5 - 7.25 inches
700229	811	20 lb. & 30 lb. Dry Chemical, 30 lb. Class D., 20 lb. CO2 20 lb. & 25 lb. MiniGuard (horizontal), 20 lb. & 30 lb. High Flow	7.0 - 8.0 inches
700230	812	10 lb. Short Dry Chemical, 10 lb. High Flow	6.0 - 6.25 inches



## Frequently Asked Questions

### How do I clean up dry chemical after a fire?

Clean up of the product is best achieved using a vacuum or wet sweep and shovel. Either method will minimize the generation of dust. Bag or drum the product for disposal. If the product has been used on a fire or has become contaminated, use personal protective equipment and containment means that are appropriate for the composition of the mixture.

### How do I dispose of dry chemical?

Buckeye dry chemical extinguishing agents are not characteristically hazardous or listed as hazardous waste. Dispose of in accordance with state or local laws, which may be more restrictive than federal regulations. Keep in mind that if the product was used on a fire the characteristics of the waste mixture may have been altered or contaminated. Disposal of this waste may require different disposal considerations. As each situation may be different, Buckeye suggests consulting the appropriate regulatory agency for guidance on disposal.

### Are Spot Protection extinguishers refillable?

No. Spot Protection units are considered disposable and should be replaced after use or twelve years, whichever comes first (Ref. NFPA 10, Para. 7.3.1.2.1.3).

### Where do I find the year of manufacture on a portable extinguisher?

The year of manufacture is stamped into the bottom of steel cylinder extinguishers (Dry Chemical and Halotron units). On the bottom you will see three letters with two numbers underneath. The two numbers are the last two digits of the year of manufacture. For example, if the number 15 is stamped on the cylinder bottom, that indicates the year of manufacture as 2015. 09 would indicate 2009, 99 would indicate 1999, etc.

On the stainless steel cylinders (Class K, Water, and Water Mist units) the date of manufacture will either be stamped into the hanger loop of the cylinder or printed on the nameplate label (left-hand side, above the barcode).

On CO2 extinguishers the year of manufacture is stamped into the shoulder of the cylinder. You will see two numbers followed by an "A" shape and two more numbers. The two numbers following the "A" shape are the numbers for the year of manufacture, they are the last two digits of the year.

### Are the fasteners for the extinguisher mounting hardware included with the unit?

No. The type of fastener used for mounting the extinguisher is dependent on the surface to which it will be mounted. The Owner's Manual included with every hand-held portable extinguisher has mounting instructions and the recommended type of fastener to be used for various surfaces.

### Since CO2 extinguishers don't have a pressure gauge, how do I know if it is under-pressurized?

The carbon dioxide in the extinguisher is in a liquid state and remains a liquid because of the pressure it is under, a pressure that it self-creates as it tries to turn into a gaseous state. Even if there were half of the amount of carbon dioxide in an extinguisher as there should be, it would still create the same amount of pressure in the cylinder. It is for this reason that CO2 extinguishers are checked for proper weight during the monthly inspection. Refer to the nameplate label for proper fill weight.

### Where do I find the Inspection Record that must be attached to each extinguisher?

The Inspection Record is found on the Owner's Manual that is included in the box of every portable fire extinguisher. The Record is cut off the Manual and attached to the extinguisher.



## Frequently Asked Questions

### How does temperature affect the pressure reading of a stored pressure fire extinguisher?

As the extreme temperature months of summer and winter come upon us, Buckeye receives a number of questions about “leakers” or over-pressurized extinguishers. Users will see that the pressure gauge indicator is not pointing straight up, that it is positioned in the low or high side of the green pie-shaped “charged” zone. In most cases it turns out that the extinguisher has been subjected to extremes in cold or heat during transit, storage, or mounting location.

In the manufacturing process extinguishers are filled with extinguishing agent and pressurized with expellant gas at an ambient temperature of 68-70°F. The pressure gauge on the extinguisher is calibrated to show the normal charged pressure at this temperature and the pressure indicator on the gauge will be pointing straight up. As the extinguisher is exposed to extremes in temperature (hot or cold) the expellant gas will expand or contract accordingly. This will cause the pressure indicator to move left or right of center. As a visual aid the green pie-shaped area on the gauge is intended to show a charged condition for the extinguisher through the temperature range for which the extinguisher is rated.

For example, a dry chemical fire extinguisher has an operable temperature range of -65° to +120°F. An extinguisher that is subjected to temperature ranges between -65° and +70°F will have the pressure indicator register between the left edge of the green pie and the upright middle position. Conversely, extinguishers exposed to temperature ranges of 70° to 120°F will have the pressure indicator register between the upright position and the far right edge of the green area. In either case, if the pressure indicator is within the green “charged” zone the extinguisher will operate as intended.

### Are Buckeye fire extinguishers certified to NFPA or OSHA Standards?

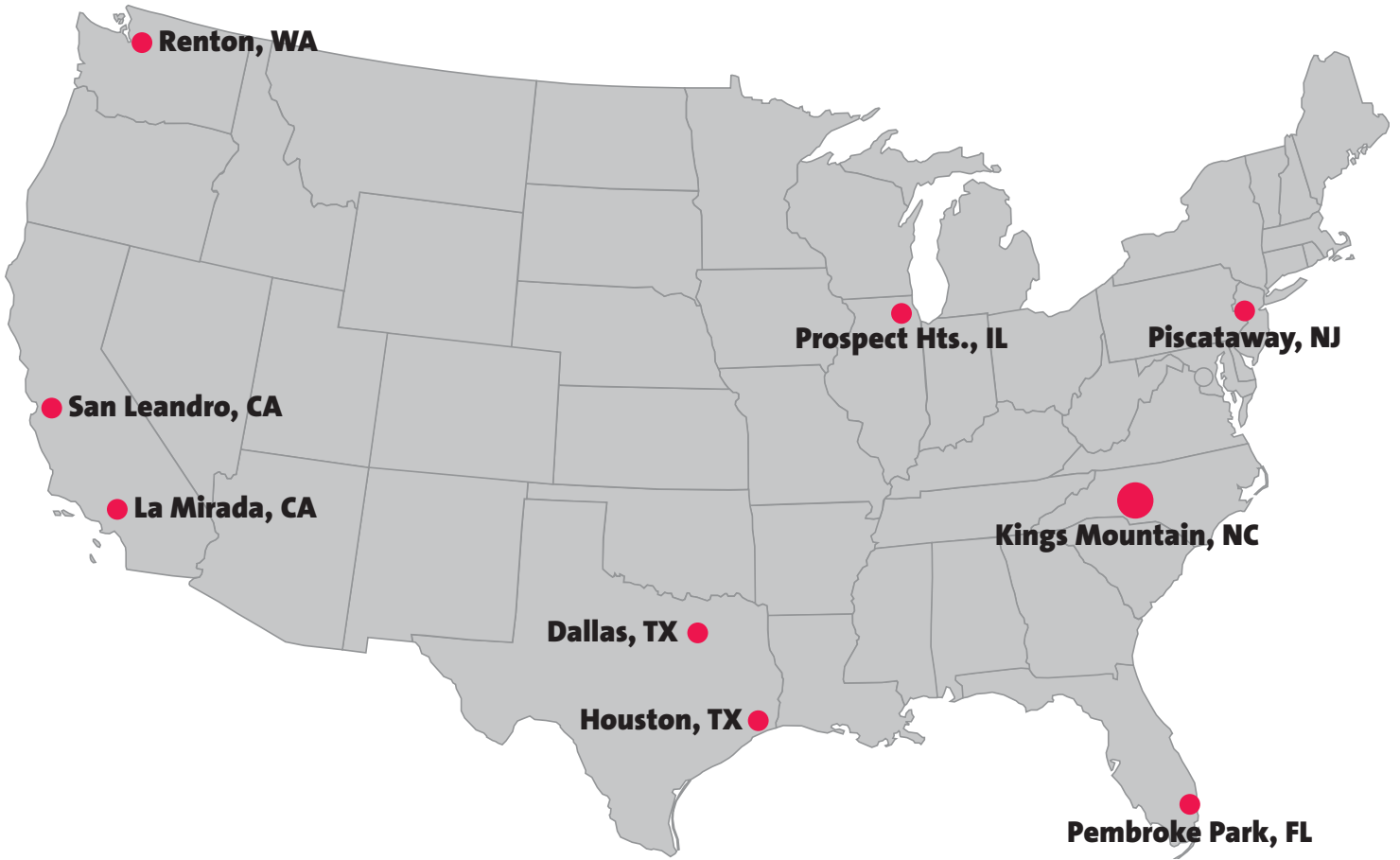
OSHA Standards, NFPA Standards, and local codes are Standards and codes that deal with the selection, installation, inspection, and maintenance of fire extinguishers. All of those issues are under the control of the party that purchases the fire extinguisher. As manufacturers we cannot control what happens to the extinguishers once they leave our factory. It would be misleading for Buckeye to state that our extinguishers comply with those Standards or codes. What we can say is that the extinguishers have been tested and Listed by UL as meeting the

construction and performance Standards appropriate for that model of extinguisher (e.g. UL 299 and UL 711 for dry chemical fire extinguishers) and wherever local codes or a Standard such as NFPA 10 or OSHA requires a UL Listed extinguisher, Buckeye fire extinguishers can be used to fulfill that requirement.

### Can I get a Coast Guard Certificate of Compliance for Buckeye fire extinguishers?

The Coast Guard does not conduct approval review of portable fire extinguishers. The regulations require that extinguishers are tested, listed, and labeled by a Coast Guard recognized Independent Testing Laboratory. Currently, Underwriters Laboratories, Inc. (UL) and Underwriters Laboratories of Canada (ULC) are Recognized Independent Laboratories. Essentially, UL and ULC administer the Coast Guard’s extinguisher approval program on the Coast Guard’s behalf with Coast Guard oversight.

The Coast Guard does not issue certificates of approval for portable fire extinguishers. Instead, an approved extinguisher can be identified by the marine type label, such as “Marine Type, USCG approved, Type X. Size X, USCG approval number 162.028/XX.” Buckeye’s USCG approved extinguishers are listed in the UL On-Line Certification Directory.



**Warehouse Distribution Centers**

**Buckeye Fire Equipment Company**

PO Box 428 • 110 Kings Road • Kings Mountain • North Carolina 28086

Tel: 704.739.7415 • Fax: 704.739.7418 • Email: [bfec@buckeyefire.com](mailto:bfec@buckeyefire.com)

[www.buckeyefire.com](http://www.buckeyefire.com)

For more information please contact: