

**Information Required to Obtain Correct Parts for  
Bilco Roof Scuttles**

1. Age of Unit: \_\_\_\_\_
  2. Cover Material (If unsure of material, test with magnet): \_\_\_\_\_
  3. Curb Material (If unsure of material, test with magnet): \_\_\_\_\_
- Note: Cover and Curb may be fabricated from different materials.
4. Number of Hinges: \_\_\_\_\_ Hinge Location (Refer to Fig. 2 Below)
  5. Length and width of frame opening (fig. 1) note hinge side if unit is not square: \_\_\_\_\_
  6. Is unit Single or Double leaf? \_\_\_\_\_

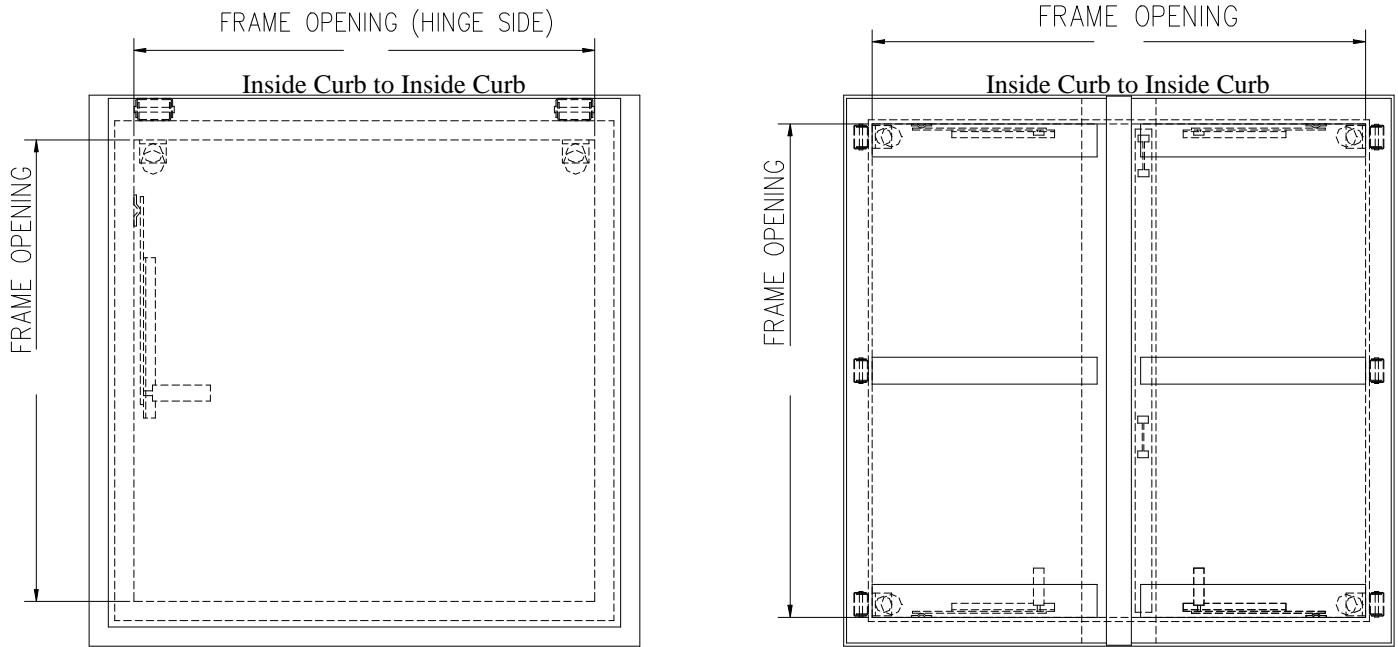


FIG. 1

SINGLE LEAF UNIT

DOUBLE LEAF UNIT

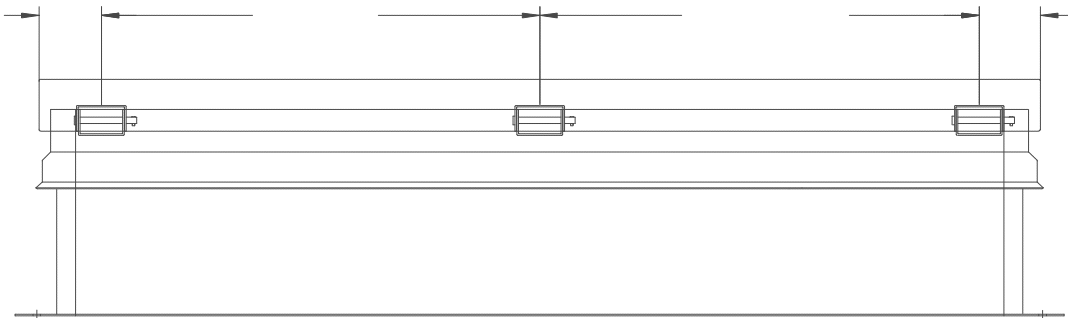


FIG. 2

7. When lifting mechanisms are required, provide the following information:
- A. Number of lifting mechanisms in each corner: \_\_\_\_\_
  - B. Is lower mounting-shoe square or round (fig. 3)? \_\_\_\_\_
  - C. Diameter of upper and lower tubes (fig. 3): \_\_\_\_\_

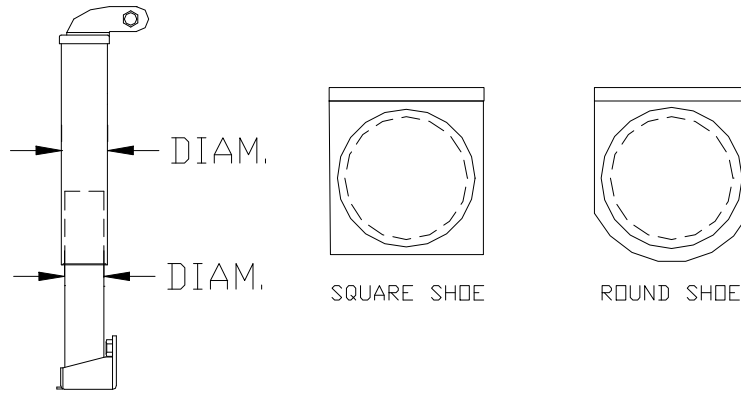


FIG. 3

8. When either hold-open arms or guide arms are needed, provide the following (fig. 4):
- A. Total length of arm: \_\_\_\_\_
  - B. Length from center to center of pivot points: \_\_\_\_\_
  - C. Arm thickness: \_\_\_\_\_
  - D. Arm width: \_\_\_\_\_

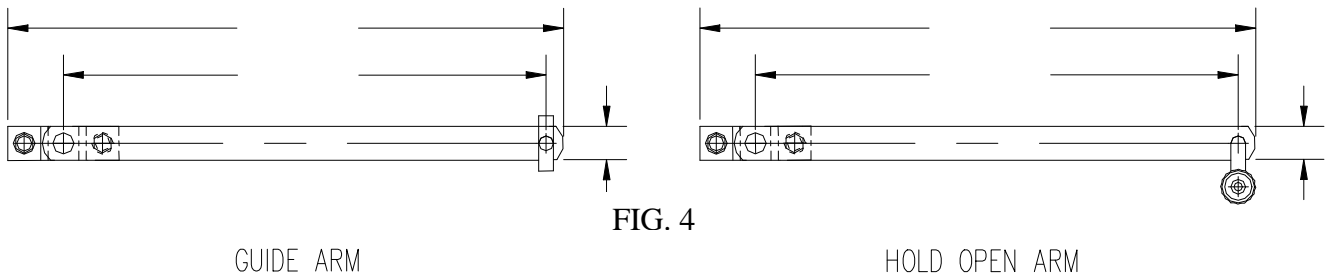


FIG. 4

GUIDE ARM

HOLD OPEN ARM

9. For a single point lock assembly (for doors with a hinge side length under 8'0"), provide the Dimensions required in fig. 5 to determine whether the lock assembly must be modified for old style mounting. For doors with hinge side length of 8'-0" or greater, refer to fig. 6 and supply the required dimension.

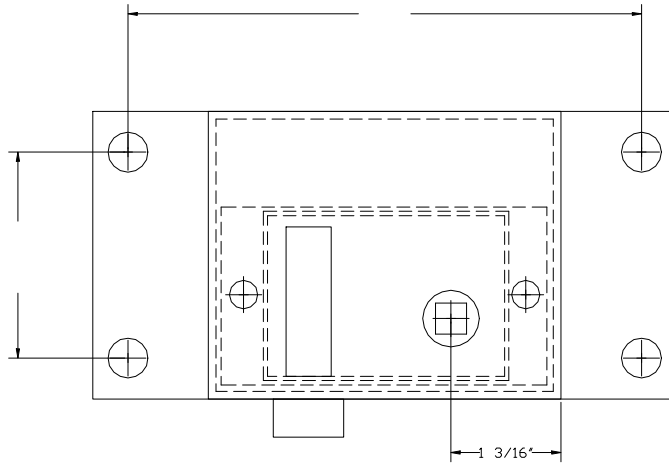


FIG. 5  
LOCK ASSEMBLY MOUNTING

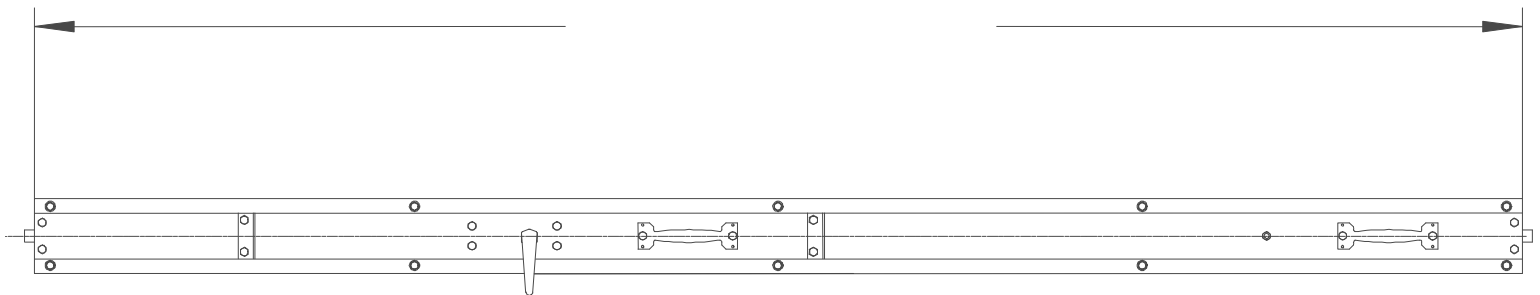


FIG. 6  
2-POINT LOCK

**IMPORTANT NOTE:**

Photographs of the product from various angles will greatly assist in determining the required replacement parts.

Any other features such as special locks, unique modifications, sloped units, etc. that may be of importance should also be noted.