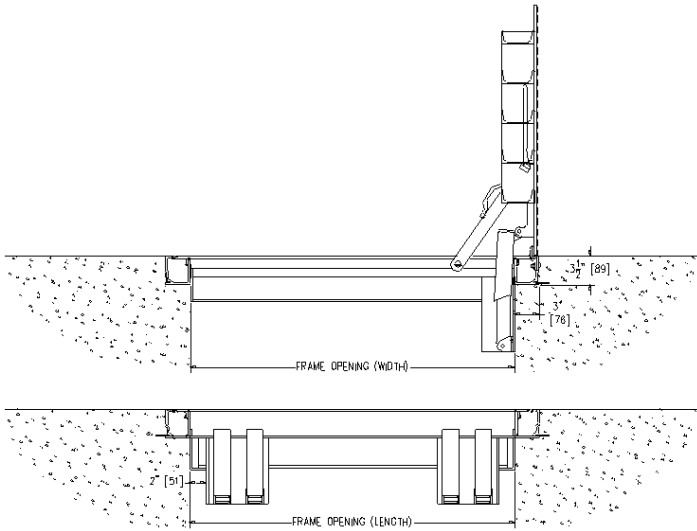
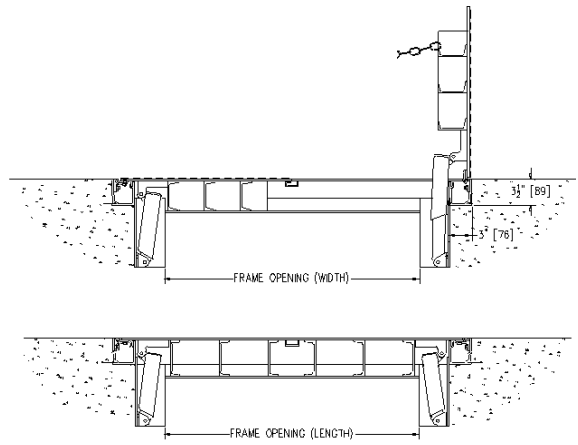


**Information Required to Obtain Correct Parts for**  
**Bilco J-H20 Series Sidewalk Doors**

1. Age of Unit: \_\_\_\_\_
2. Is Unit steel or aluminum? (If unsure of material, test with magnet): \_\_\_\_\_
3. Length and width of frame opening (fig. 1) note hinge side if unit is not square: \_\_\_\_\_
4. Is unit Single or Double leaf? \_\_\_\_\_
5. Provide number of hinges (per leaf if JD): \_\_\_\_\_



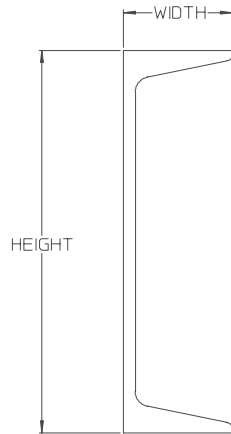
**SINGLE LEAF**



**DOUBLE LEAF**

FIG. 1

6. Provide approximate channel dimensions as shown: Height \_\_\_\_\_ Width \_\_\_\_\_



7. When lifting mechanisms are needed, provide the following information:
- A. Number of lifting mechanisms in each corner: \_\_\_\_\_
  - B. Is material black nylon, zinc plated steel, or stainless steel? \_\_\_\_\_
  - C. Is lower mounting-shoe square or round (fig. 2)? \_\_\_\_\_
  - D. Diameter of upper and lower tubes (fig. 2): \_\_\_\_\_

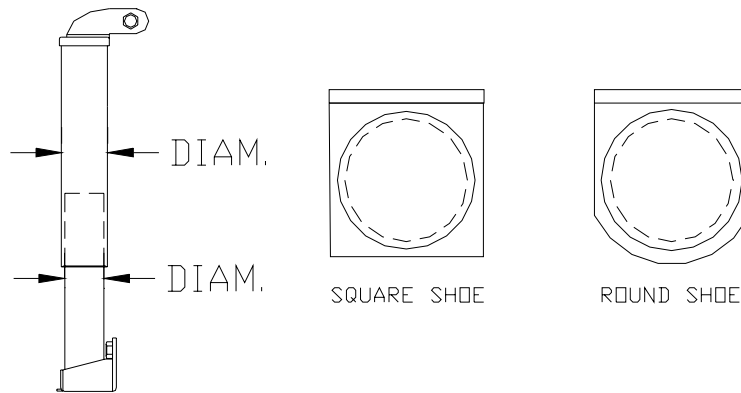
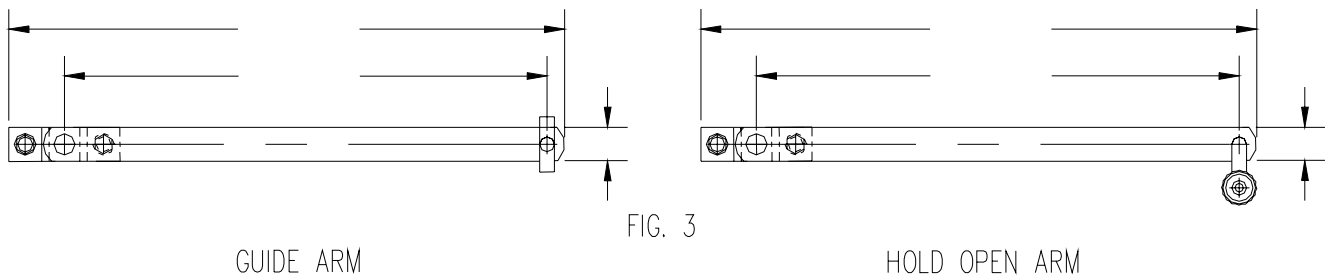


FIG. 2

8. When either hold-open arm or guide arm are needed, provide the following (fig. 3):
- A. Length from center to center of pivot points: \_\_\_\_\_
  - B. Arm thickness: \_\_\_\_\_
  - C. Arm width: \_\_\_\_\_



**IMPORTANT NOTE:**

Photographs of the product from various angles will greatly assist in determining the required replacement parts.

Any other features such as special locks, unique modifications, sloped units, etc. that may be of importance should also be noted.