

# 11 ANSUL - FIRE EXTINGUISHER PARTS

## DRY CHEMICAL

SY-0513, SY-0514, SY-0613, SY-0614, SY-0623, SY-0624, SY-0633, SY-0634, SY-1013, SY-1014, SY-1015, SY-1023, SY-1024, SY-1033, SY-1034, SY-2013, SY-2014, SY-2023, SY-2024, SY-2033, SY-2034

## HALON 1211

SY-0541, SY-0942, SY-1441, SY-1741

## CLEANGUARD (FE36)

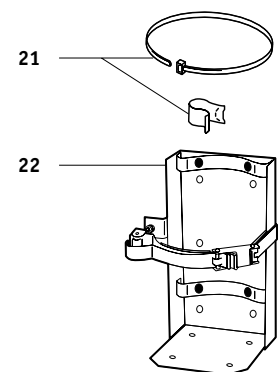
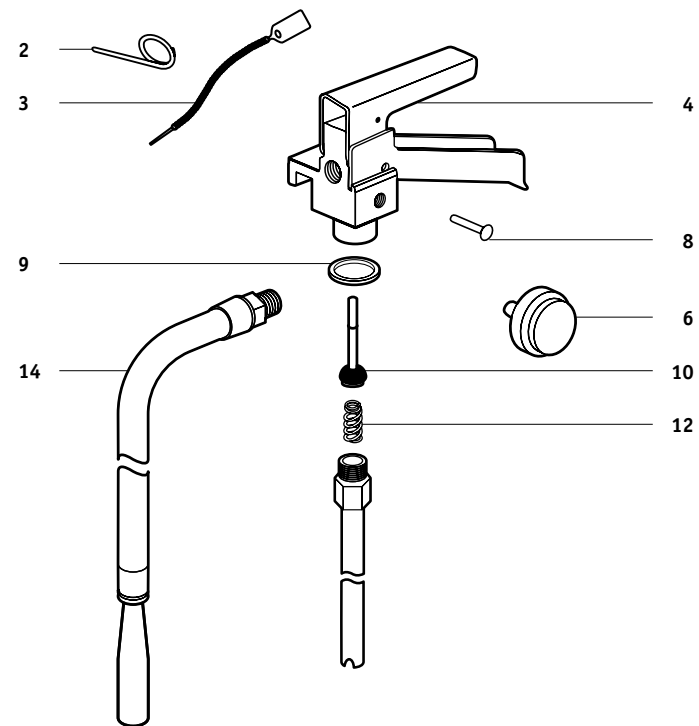
CA-0581, CA-0681, CA-0981, CA-1081, CA-1381, CA-1481

### FIG. P/N SERVICE & MAINTENANCE PART DESCRIPTION

2		Pull Pin
3		Tamper Seal
4	31793AS	Lever
6	G100H	Gauge - 100 (Halon) SY-0541
6	G125H	Gauge - 125 (Halon) SY-0941
6	G195	Gauge - 195 All Dry Chemical
6	G195H	Gauge - 195 (Halon) SY-1441, 1741
6	428940AS	Gauge (FE36) (Replaces 419493) All Cleanguard
9	16222AS	Collar Quad Ring All Dry Chemical
9	21882AS	Collar Quad Ring All Halon, Cleanguard
10	ASVS4	Valve Stem Assembly
12	29256AS	Spring
14	30617AS	Hose & Nozzle Assembly SY-2013, 2014, 2033, 2034
14	30618AS	Hose & Nozzle Assembly SY-2023, 2024

### FIG. P/N ACCESSORY PART DESCRIPTION

21		Universal Hose Strap/Clip
22	10HB	Heavy-Duty Vehicle Bracket 9-14 lb
22	15HB	Heavy-Duty Vehicle Bracket 17, 20 lb
N/S	ASWH2	Wall Hanger Up to 9 lb, SY-1015
N/S	ASWH3	Wall Hanger 10, 14 lb (Except SY-1015)
N/S	ASWH4	Wall Hanger 17, 20 lb
N/S	AD30	Recharge Adapter
N/S	HTA9	Hydrostatic Test Adapter
N/S	7602AC	Hydrostatic Test Instructions



**DRY CHEMICAL**

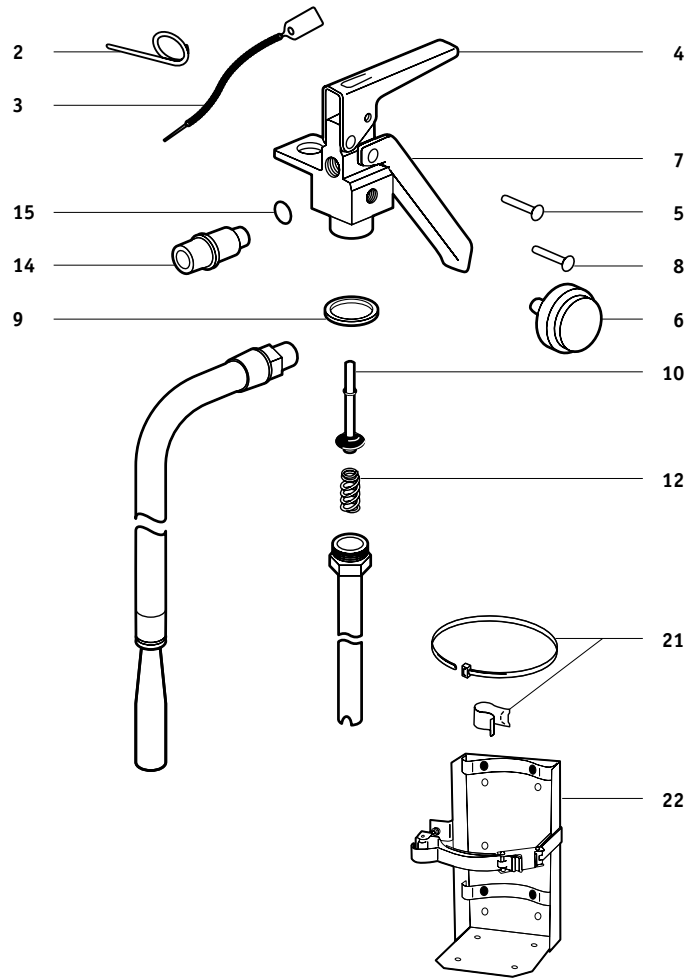
SY-0212, SY-0214, SY-0215, SY-0216, SY-0236, SY-0515, SY-0516, SY-0517, SY-0521, SY-0531, SY-0635

**HALON**

SY-0241, SY-0242, SY-0243

FIG.	P/N	SERVICE & MAINTENANCE PART DESCRIPTION
2		Pull Pin
3		Tamper Seal
4	ASL1	Lever (Replaces 68169)
5	25719AS	Lever Rivet
6	G100H	Gauge - 100 (Halon)
6	G195	Gauge - 195 All, Except SY-0241, 0242, 0243
7	ASH1	Handle (Replaces 79119)
8	25720AS	Handle Rivet
9	79122AS	Collar O-Ring (Replaces Quad-Ring 25765) Dry Chemical
10	ASVS5	Valve Stem Assembly (Replaces 21858) All, Except SY-0516, 0517, 0521, 0531
10	429099AS	Valve Stem Assembly SY-0516, 0517, 0521, 0531, SY-0241, 0242, 0243
12	415565AS	Spring SY-0516, 0517, 0521, 0531
14	ASN1	Nozzle (Replaces 27099) SY-0212, 0214, 0215, 0216
14	54444AS	Nozzle SY-0515 w/o Hose
15	16047AS	O-Ring, Nozzle SY-0212, 0214, 0215, 0216, 0236, 0515

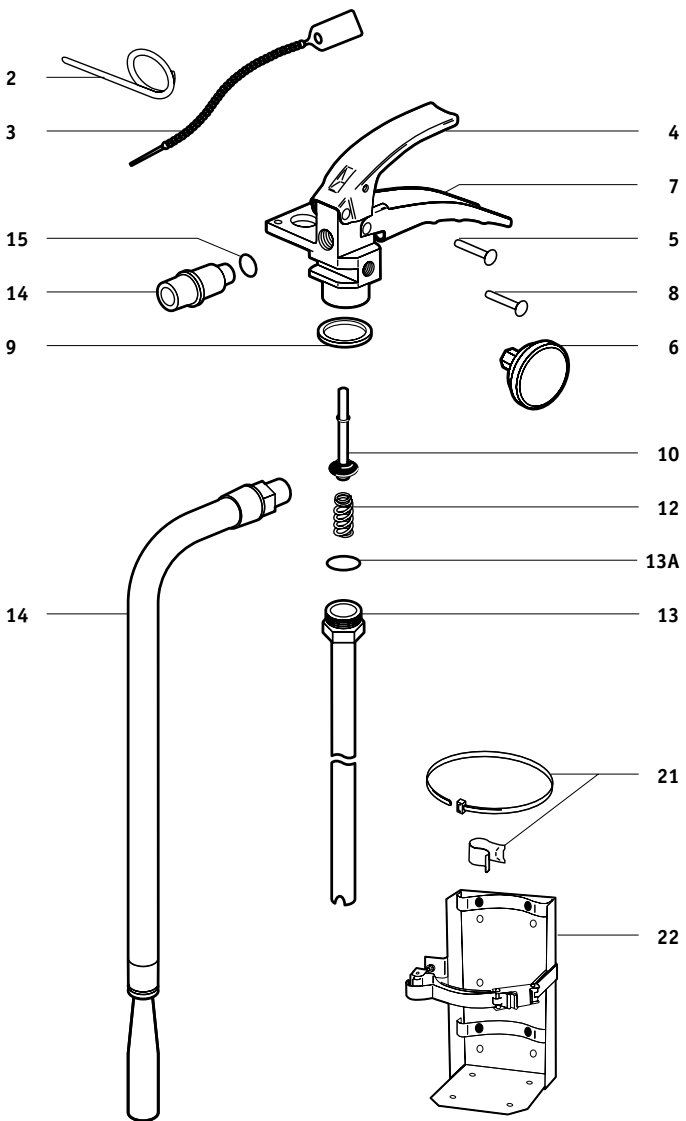
FIG.	P/N	ACCESSORY PART DESCRIPTION
21		Universal Hose Strap/Clip
N/S	24610AS	Bracket Assembly SY-0212, 0214, 0216, 0236
N/S	415824AS	Bracket Assembly SY-0516, 0517, 0521, 0531
22	5DC	Heavy-Duty Vehicle Bracket SY-0516, 0517, 0521, 0531
N/S	AD22	Recharge Adapter SY-0212, 0214, 0215, 0216, 0236, 0515
N/S	AD35	Recharge Adapter SY-0516, 0517, 0521, 0531
N/S	HTA11	Hydrostatic Test Adapter
N/S	7602AC	Hydrostatic Test Instructions



# 11 ANSUL - FIRE EXTINGUISHER PARTS

## DRY CHEMICAL

A10I, PK10I, C10I, A20I, PK20I, C20I, AA10SI, AA20SI, PK10SI



### FIG. P/N SERVICE & MAINTENANCE PART DESCRIPTION

2		Pull Pin
3		Tamper Seal
4	428428AS	Lever
5	428130AS	Lever Rivet
6	G195	Gauge - 195
7	428429AS	Handle
8	428130AS	Handle Rivet
9	428327AS	Collar O-Ring
10	428431AS	Valve Stem Assembly
12	415565AS	Spring
13	428797AS	Siphon Tube
		All 10 lb
13	428799AS	Siphon Tube
		All 20 lb
13A	76076AS	Siphon Tube O-Ring
14	428733AS	Hose & Nozzle Assembly
		A10I, C10I
14	428735AS	Hose & Nozzle Assembly
		PK10I
14	428737AS	Hose & Nozzle Assembly
		A20I
14	428739AS	Hose & Nozzle Assembly
		PK20I

### FIG. P/N ACCESSORY PART DESCRIPTION

21		Universal Hose Strap/Clip
22	10HB	Heavy-Duty Vehicle Bracket
		All 10 lb
22	15HB	Heavy-Duty Vehicle Bracket
		All 20 lb
N/S	WH15	Wall Hanger
		All 10 lb
N/S	WH20	Wall Hanger
		All 20 lb
N/S	AD23	Recharge Adapter
N/S	HTA43	Hydrostatic Test Adapter
N/S	7602AC	Hydrostatic Test Instructions



**DRY CHEMICAL**

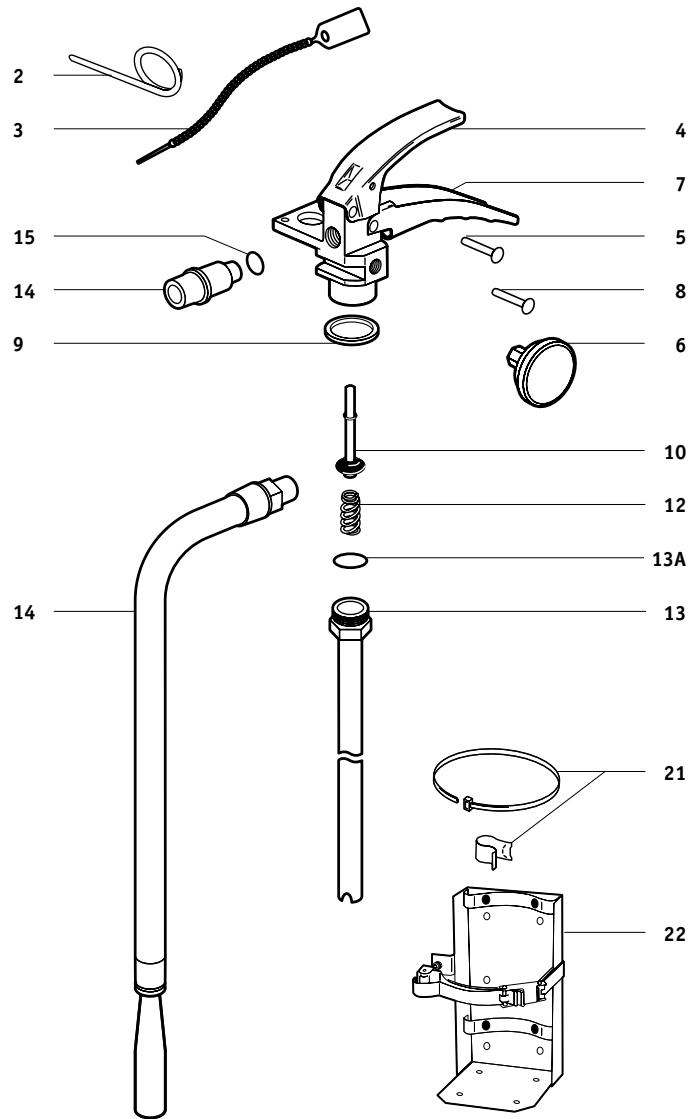
A02, A02VB, A02S, A02SVB, C02VB, A05, AA05, AA05-1, A05VB, AA05VB, PK05, C05, A10H, A10T, AA10S, PK10, PK10S, C10, C10S, AA20, AA20-1, PK20, C20

**CLEANGUARD (FE36)**

FE02VB, FE05, FE09, FE13

FIG.	P/N	SERVICE & MAINTENANCE PART DESCRIPTION
1	429084ASD	Valve Assembly All 5 lb, Except Cleanguard
1	429085ASD	Valve Assembly A10H, C10, PK10
1	429087ASD	Valve Assembly All 20 lb
2		Pull Pin
3		Tamper Seal
4	429096AS	Lever All Except A02S, A02SVB
5	428130AS	Lever Rivet
6	G125	Gauge - 125 A02S, A02SVB
6	G195	Gauge - 195 All Dry Chemical Except A02S, A02SVB
6	426264AS	Gauge (FE36) FE02VB, FE05
6	428940AS	Gauge (FE36) FE09, FE13
7	429097AS	Handle All Except A02S, A02SVB
8	428130AS	Handle Rivet
9	428327AS	Collar O-Ring
10	429099AS	Valve Stem Assembly
12	415565AS	Spring
13	428795AS	Siphon Tube All 2½ lb Dry Chemical, FE02VB
13	428796AS	Siphon Tube All 5 lb Except Cleanguard
13	428797AS	Siphon Tube A10H, C10, PK10, FE09, AA10S, C10S, PK10S
13	428798AS	Siphon Tube A10T, FE05
13	428799AS	Siphon Tube All 20 lb, FE13
13A	76076AS	Siphon Tube O-Ring
14	428269AS	Nozzle A02, A02VB
→ 14	436805AS	Nozzle A02S, A02SVB
14	428729AS	Hose & Nozzle Assembly AA05, AA05VB
14	428728AS	Hose & Nozzle Assembly A05, A05VB
14	428732AS	Hose & Nozzle Assembly A10T, A10H, C10, C10S
14	428734AS	Hose & Nozzle Assembly PK10, PK10S
14	428736AS	Hose & Nozzle Assembly AA20, AA20-1
14	428738AS	Hose & Nozzle Assembly PK20
14	428740AS	Hose & Nozzle Assembly C20
15	434908AS	Hose & Nozzle Assembly AA05-1, AA05VB-1
15	436592AS	Hose & Nozzle Assembly AA10S
15	57744AS	Nozzle O-Ring FE02VB

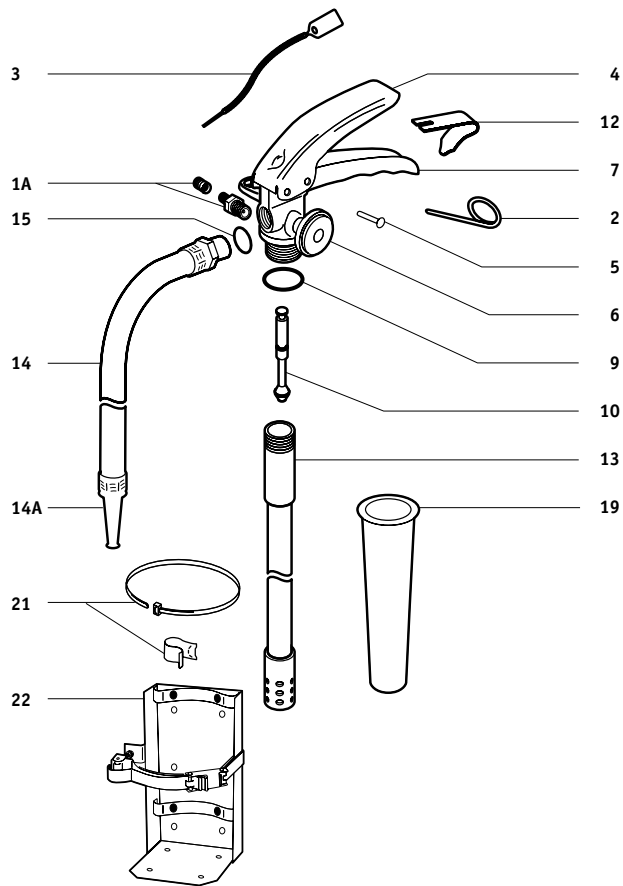
FIG.	P/N	ACCESSORY PART DESCRIPTION
21		Universal Hose Strap/Clip
22	5DC	Heavy-Duty Vehicle Bracket 5 lb
22	10HB	Heavy-Duty Vehicle Bracket 9-14 lb
22	15HB	Heavy-Duty Vehicle Bracket 17, 20 lb
N/S	WH5	Wall Hanger Up to 9 lb
N/S	WH15	Wall Hanger 10, 14 lb
N/S	WH20	Wall Hanger 17, 20 lb
N/S	AD23	Recharge Adapter
→ N/S	AD38	Recharge Adapter A02S, A02SVB
N/S	HTA43	Hydrostatic Test Adapter
N/S	7602AC	Hydrostatic Test Instructions



2014 © BROOKS EQUIPMENT COMPANY, LLC



# 11 ANSUL - FIRE EXTINGUISHER PARTS



## WATER & WET CHEMICAL

W02, K01

FIG.	P/N	SERVICE & MAINTENANCE PART DESCRIPTION
2		Pull Pin, Stainless Steel
3		Tamper Seal
4	429163AS	Lever
5	429165AS	Lever Rivet
6	G100WS	Gauge - 100
7	429160AS	Handle
9	429537AS	Collar O-Ring
10	552144FG	Valve Stem Assembly
12	429162AS	Spring
13	430851AS	Siphon Tube
14	430055AS	Hose & Nozzle Assembly
14A	426074AS	Nozzle Tip
15	429544AS	Hose O-Ring
19	429541AS	Fill Tube
N/S	A430182	PRX Liquid Agent, 6lit
N/S	A423320	PRX Liquid Agent, 5 gal

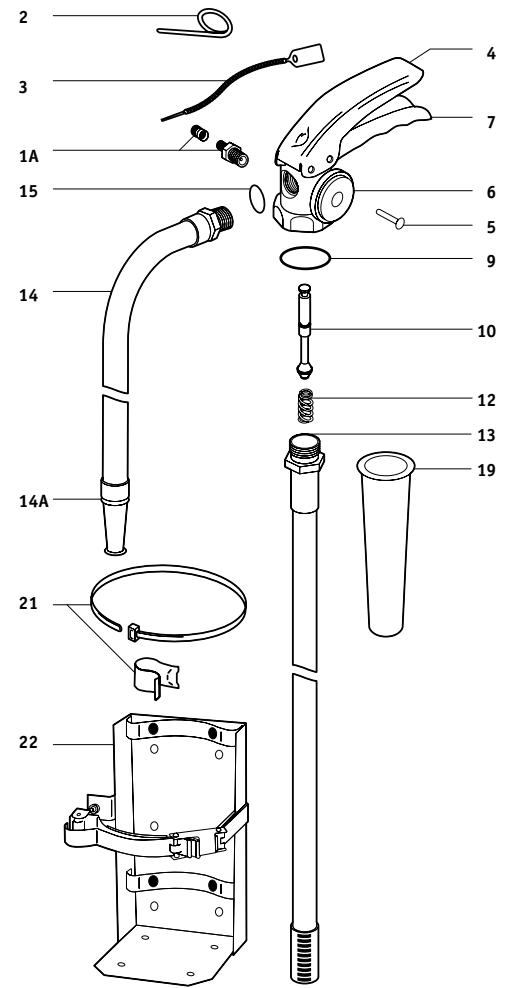
FIG.	P/N	ACCESSORY PART DESCRIPTION
1A	AV1	Pressure Valve & Cap Assembly
N/S	CORE	Pressure Valve Core, Pkg/50
N/S	AVC	Pressure Cap, Pkg/50
21		Universal Hose Strap/Clip
22	15HB	Heavy-Duty Vehicle Bracket
N/S	WH20	Wall Hanger
N/S	AD24	Recharge Adapter
N/S	HTA46	Hydrostatic Test Adapter
N/S	429656AS	Service Manual (Wet Chemical)
N/S	7602AC	Hydrostatic Test Instructions



## WATER & WET CHEMICAL

W02-1, K01-1, K01-2, K01-3

FIG.	P/N	SERVICE & MAINTENANCE PART DESCRIPTION
2		Pull Pin, Stainless Steel
3		Tamper Seal
4	430924AS	Lever
5	430250AS	Lever Rivet
6	G100WS	Gauge - 100
7	430273AS	Handle
9	56909AS	Collar O-Ring
10	429099AS	Valve Stem Assembly
12	430004AS	Spring
→ 13	439713AS	Siphon Tube
13	430793AS	Siphon Tube K01-1, K01-2, K01-3
→ 14	439495AS	Hose & Nozzle Assembly W02-1
14	429543AS	Hose & Nozzle Assembly K01-1, K01-2, K01-3
14A	426074AS	Nozzle Tip W02-1
15	429544AS	Hose O-Ring K01-1, K01-2
19	429541AS	Fill Tube
N/S	A430182	PRX Liquid Agent, 6lit K01-1
N/S	A423320	PRX Liquid Agent, 5 gal K01-1
N/S	A79372	Ansulex Chemical Agent, 3 gal K01-2
<b>FIG.</b>	<b>P/N</b>	<b>ACCESSORY PART DESCRIPTION</b>
1A	AV1	Pressure Valve & Cap Assembly W02-1
N/S	CORE	Pressure Valve Core, Pkg/50 W02-1
N/S	AVC	Pressure Cap, Pkg/50 W02-1
21		Universal Hose Strap/Clip
22	15HB	Heavy-Duty Vehicle Bracket
N/S	WH2	Wall Hanger
N/S	AD24	Recharge Adapter K01-1, K01-2
N/S	429656AS	Service Manual (Wet Chemical)
N/S	7602AC	Hydrostatic Test Instructions



# 11 ANSUL - FIRE EXTINGUISHER PARTS

## CARTRIDGE OPERATED

All 10 - 30 lb E & G Series

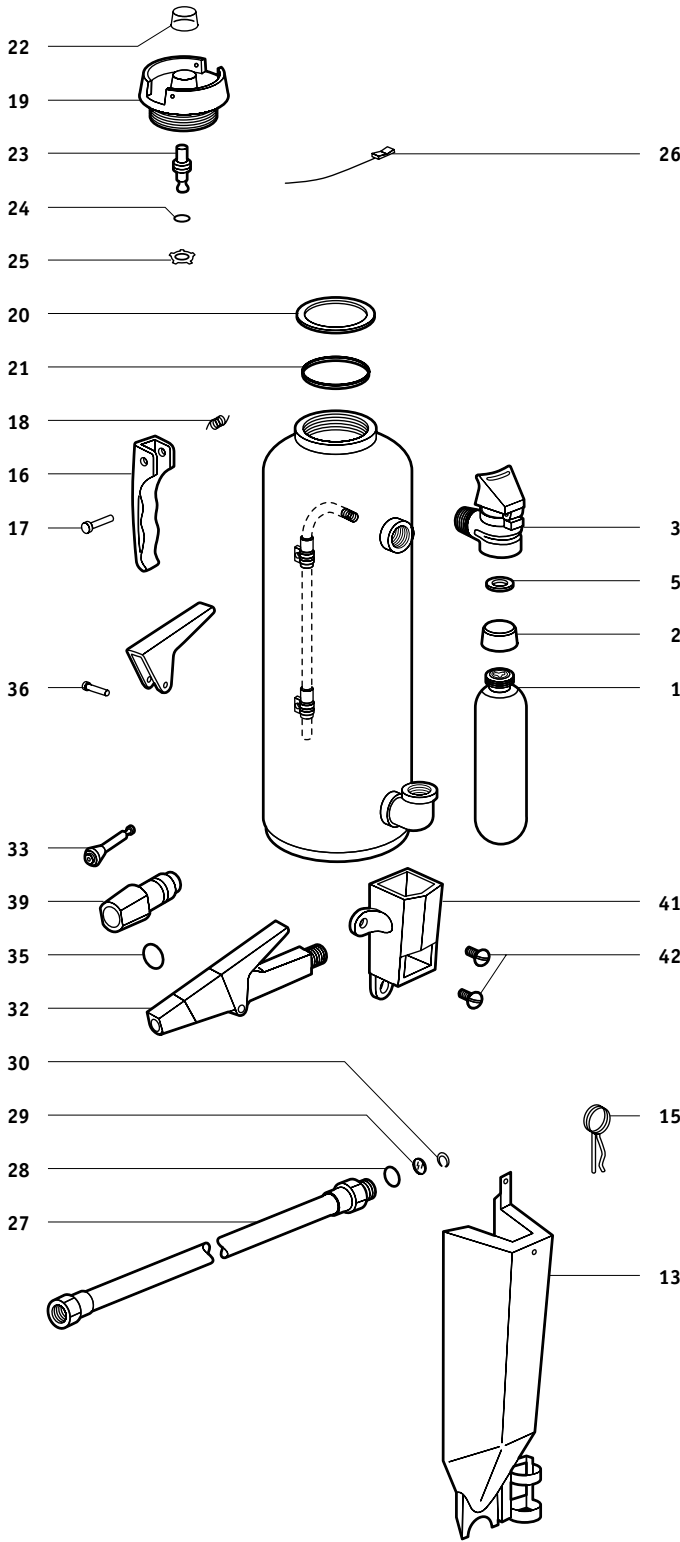


FIG.	P/N	SERVICE & MAINTENANCE PART DESCRIPTION
1	A5373	Cartridge, Nitrogen 30 lb LT, ML
1	A7032	Cartridge, Nitrogen 20 lb LT
1	4616AC	Cartridge, Carbon Dioxide All 10 lb, Except LT
1	4614AC	Cartridge, Carbon Dioxide All 20 lb, Except LT
1	4615AC	Cartridge, Carbon Dioxide All 30 lb, Except LT, ML
2		Cartridge Shipping Cap
3	3626AC	Cartridge Receiver Assembly All, Except CR, LT, ML
5	181AC	Gasket, Cartridge Receiver
13	3652AC	Cartridge Guard Assembly, Metal All 10 lb E Series, Except CR, RP, LT
13	6287AC	Cartridge Guard Assembly, Metal All 30 lb E Series, Except CR, RP, LT
13	6302AC	Cartridge Guard Assembly, Metal All 20 lb E Series, Except CR, RP, LT
13	416346AC	Cartridge Guard Assembly, Plastic All 20 lb G Series, Except RP, LT
13	418025AC	Cartridge Guard Assembly, Plastic All 30 lb G Series, Except RP, LT
15	7066AC	Ring Pin
16	6169AC	Carrying Handle
17	1265AC	Carrying Handle Rivet
18	2902AC	Carrying Handle Spring
19	17999AC	Fill Cap Assembly w/ Indicator
20	6190AC	Gasket, Fill Cap
21	6273AC	Quad Ring, Fill Cap
22	17633AC	Cap, Plastic
23	27648AC	Stem, Indicator
24	17630AC	Quad Ring
25	1239AC	Retaining Ring
26	VIS10	Visual Inspection Seal, Pkg/10
27	7083AC	30 lb Hose Assembly
27	7091AC	20 lb Hose Assembly
27	13005AC	10 lb Hose Assembly
28	6263AC	Hose O-Ring (10 lb)
28	6323AC	Hose O-Ring (20 lb)
28	6324AC	Hose O-Ring (30 lb)
29	415659AC	Hose Seal (10 lb G Series)
29	415660AC	Hose Seal (20 lb E & G Series)
29	415661AC	Hose Seal (30 lb G Series)
30	415855AC	Retaining Ring (10 lb G Series), Pkg/10
30	415856AC	Retaining Ring (20 lb E & G Series), Pkg/10
30	415857AC	Retaining Ring (30 lb G Series), Pkg/10
32	14045AC	Nozzle Assembly 30 lb Regular Dry Chemical
32	14551AC	Nozzle Assembly 20 lb Regular Dry Chemical
32	30778AC	Nozzle Assembly 30 lb ABC, PK
32	30789AC	Nozzle Assembly 20 lb ABC, PK
32	31407AC	Nozzle Assembly 10 lb ABC
33	56117AC	Nozzle Plunger
35	1230AC	O-Ring, Nozzle (w/o O-Ring Groove)
35	3469AC	O-Ring, Nozzle
36	3621AC	Rivet, Nozzle Handle
39	17908AC	Tip, Nozzle Assembly 20 lb Regular Dry Chemical
39	17932AC	Tip, Nozzle Assembly 30 lb Regular Dry Chemical
39	30790AC	Tip, Nozzle Assembly 20 lb ABC, PK
39	30791AC	Tip, Nozzle Assembly 30 lb ABC, PK
41	74206AC	Nozzle Holder Assembly (E Series)
42	14908AC	Nozzle Platform Screw (E Series)
N/S	ACWH1	Hanger Hook
N/S	DCA	Discharge Adapter
N/S	CCW1	Cap Wrench
N/S	13133ACD	Cartridge Receiver Wrench
N/S	AGTSET	Hydrostatic Test Adapter Set
N/S		Vehicle Brackets
N/S	7674AC	Service Manual
N/S	7602AC	Hydrostatic Test Instructions

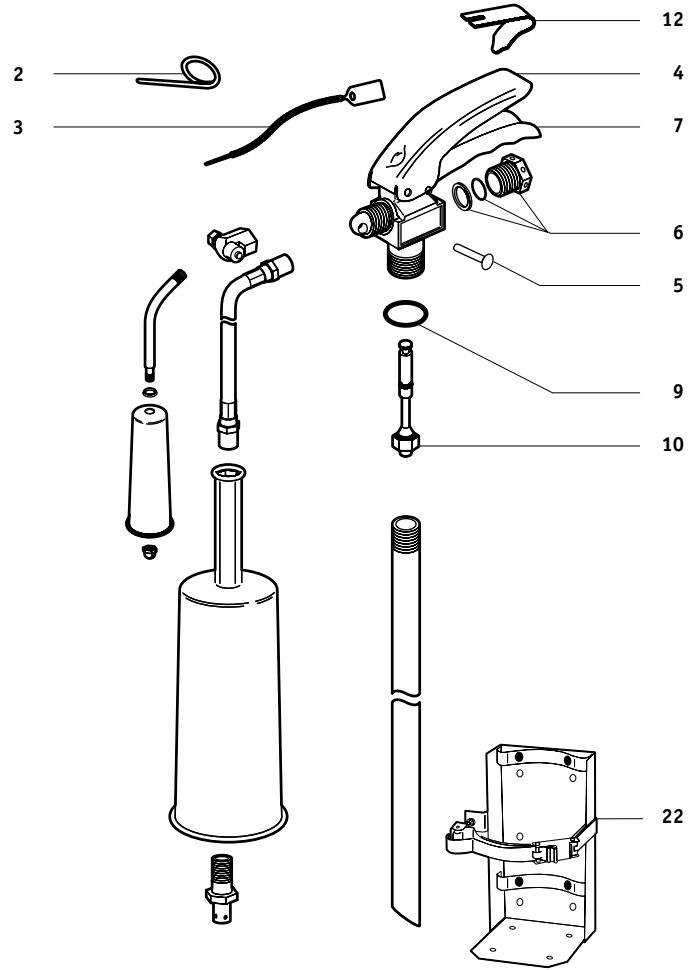


## CARBON DIOXIDE (w/ Flag Valve)

CD05, CD05A, CD10, CD10A, CD15, CD15A, CD20, CD20A, CD05-1, CD05A-1, CD10-1, CD10A-1, CD15-1, CD15A-1, CD20-1, CD20A-1

FIG.	P/N	SERVICE & MAINTENANCE PART DESCRIPTION
2		Pull Pin, Stainless Steel
3		Tamper Seal
4	429163AS	Lever (Black)
4	432775AS	Lever (Chrome)
5	429165AS	Lever Rivet
6	429515AS	Safety Disc, Gasket, & Nut Assembly
7	429160AS	Handle (Black)
7	432776AS	Handle (Chrome)
9	429170AS	Collar O-Ring
10	429154AS	Valve Stem Assembly
12	429162AS	Spring (Leaf Style)
12	415565AS	Spring (Coil Style)

FIG.	P/N	ACCESSORY PART DESCRIPTION
N/S	RDS15	Band 10, 15 lb Aluminum Cylinder
N/S	RDS20	Band 20 lb Aluminum Cylinder
N/S	RDBACLIP	Horn Clip All 10, 15, 20 lb
N/S	SET6	Hardware Set All 10, 15, 20 lb
N/S	BL209	Replacement Nameplate 5 lb (Non-UL) All 5 lb
N/S	BL210	Replacement Nameplate 10-20 lb (Non-UL) All 10, 15, 20 lb
N/S	WH5	Wall Hanger All 5 lb
N/S	WH15	Wall Hanger All 10, 15 lb
N/S	WH20	Wall Hanger All 20 lb
22	5HB	Heavy-Duty Vehicle Bracket All 5 lb
22	15HB	Heavy-Duty Vehicle Bracket All 10, 15 lb
22	20HB	Heavy-Duty Vehicle Bracket All 20 lb
N/S	429425AS	Service Manual

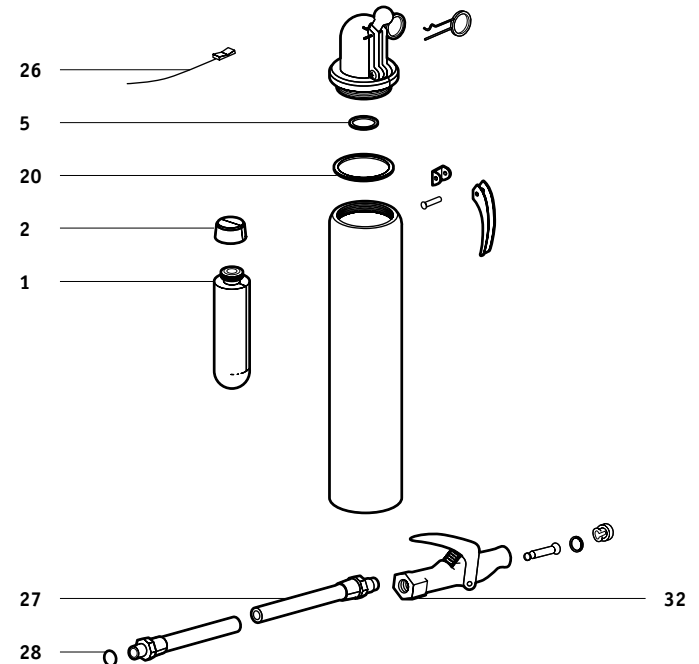


## CARTRIDGE OPERATED DRY CHEMICAL

5, A-5, K-5, LR-5, LT-5, LT-A-5, LT-K-5

FIG.	P/N	SERVICE & MAINTENANCE PART DESCRIPTION
1	4523AC	Cartridge All, Except LT
5	181AC	Gasket, Cartridge Receiver
20	615AC	Gasket, Fill Cap
27	15799AC	Hose Assembly w/ Couplings After 1967
28	6263AC	O-Ring
32	6673AC	Nozzle Assembly 5, LT-5

FIG.	P/N	ACCESSORY PART DESCRIPTION
N/S	79758AC	Bracket
2	LHSC	Cartridge Shipping Cap All, Except LT
26	VIS10	Visual Inspection Seal, Pkg/10
N/S	AGTSET	Hydrostatic Test Adapter Set
N/S	HTA13	Hydrostatic Test Adapter (Cylinder Only)

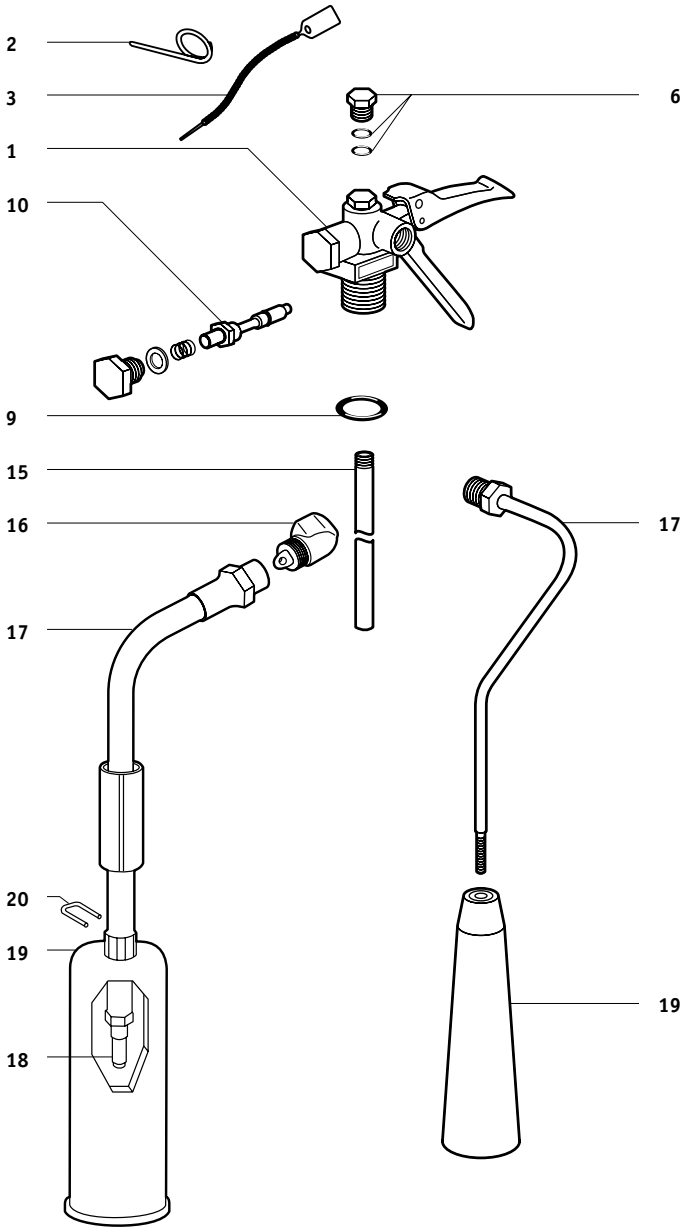




# 11 ANSUL - FIRE EXTINGUISHER PARTS

## CARBON DIOXIDE (w/ R.S. Valve)

SY-0571, SY-0572, SY-1071, SY-1072, SY-1571, SY-1572, SY-2071, SY-2072

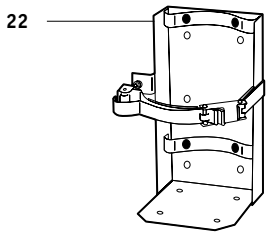


### FIG. P/N SERVICE & MAINTENANCE PART DESCRIPTION

1	79470AS	Valve Assembly SY-0572 (Aluminum Cylinder)
1	79438AS	Valve Assembly SY-1072, 1572, 2072 (Aluminum Cylinder)
2		Pull Pin, Stainless Steel
3		Tamper Seal
6	RS5	Safety Disc, Gasket, & Nut Assembly
9	79805AS	Collar O-Ring
10	418682AS	Valve Stem Assembly
15	79478AS	Siphon Tube All 15-20 lb
16	79352AS	Elbow All 10, 15, 20 lb
17	73861AS	Discharge Tube Assembly All 5 lb
17	77628AS	Hose Assembly All 10, 15, 20 lb
18	79474AS	Nozzle All 15, 20 lb
19	79350AS	Horn All 5 lb
19	77892AS	Horn w/ Handle All 10, 15 lb
19	77893AS	Horn w/ Handle All 20 lb
20	77894AS	U-Pin All 10, 15, 20 lb

### FIG. P/N ACCESSORY PART DESCRIPTION

N/S	RDS15	Strap 10-15 lb Aluminum Cylinder
N/S	RDS20	Strap 20 lb Aluminum Cylinder
N/S	RDBACLIP	Horn Clip All 10, 15, 20 lb
N/S	SET6	Hardware Set All 10, 15, 20 lb
N/S	BL209	Replacement Nameplate (Non-U.L.) All 5 lb
N/S	BL210	Replacement Nameplate (Non-U.L.) All 10, 15, 20 lb
N/S	WH5	Wall Hanger All 5 lb
N/S	WH15	Wall Hanger All 10-15 lb
N/S	WH20	Wall Hanger All 20 lb
22	5HB	Heavy-Duty Vehicle Bracket All 5 lb
22	15HB	Heavy-Duty Vehicle Bracket All 10-15 lb
22	20HB	Heavy-Duty Vehicle Bracket All 20 lb
N/S	83148AS	Service Manual



## CYLINDER OPERATED WHEELED EXTINGUISHERS

150, 350 lb ("C" Models)

FIG.	P/N	SERVICE & MAINTENANCE PART DESCRIPTION
1	27335AW	Fill Cap, Indicator All, Except Met-L-X, NAX
1A	17633AC	Indicator Cap
1B	27648AC	Indicator Stem
1C	17630AC	Quad Ring
2	3461AW	Gasket
5	Z78705AWD	Valve (Special Order)
8	423581AW	Nitrogen Hose Assembly (Valve to Regulator)
N/S	8750AW	Low Pressure Hose (Regulator to Tank) 150-350 lb (1969-1973)
9	14236AW	Hose Visual Inspection Disc, Strips of 6 ea 150 lb
9	14237AW	Hose Visual Inspection Disc, Strips of 5 ea 350 lb
10	670AW	Gasket 150 lb
10	8105AW	Gasket 350 lb
11	960AWD	Hose, 3/4" x 50', Special Order 150 lb, Except LT
12A	8101AWD	Ball Valve 150 lb, Except Met-L-X, NAX
12C	11112AW	Gasket, Valve To Hose 150 lb Gasket, Valve to Hose
12D	8105AW	Gasket, Nozzle All, Except LR
12F	29507AWD	Body, Nozzle All, Except LR
N/S	79012AW	Service Manual
N/S	53141AW	Regulator Test Manual
N/S	7602AC	Hydrostatic Test Instructions
12E	12703AW	Nozzle Tip 150 lb, Except Met-L-X, NAX
12E	12707AW	Nozzle Tip 350 lb, Except Met-L-X, NAX

