

FLASHship™

24-Hour Shipping Program

ASSA ABLOY

The ASSA ABLOY FLASHship™ Program includes products from leading brands:

MARKAR | MCKINNEY | PEMKO | RIXSON | ROCKWOOD | YALE

The global leader in
door opening solutions



FLASHship™ General Information 3

Finishes 3

Terms and Conditions 4

MARKAR

 Stainless Steel Pin and Barrel Continuous Hinges..... 5

McKINNEY®

 Spring Hinges..... 7

 3 & 5 Knuckle Hinges 7

 MacPro® & ElectroLynx® Hinges..... 8

PEMKO

 Thresholds 9-10

 Door Shoes, Jamb Sets & Sweeps 10-11

 Astragals, Rain Drips & Automatic Door Bottoms 12-13

 Aluminum Geared Continuous Hinges, Adhesive Gaskets & Modular Ramps..... 13-15

RIXSON®

 Pivot Sets & Intermediate Pivots..... 17

 Checkmate® Stops & Holders 18

 Electromagnetic Door Holder/Releases..... 18

ROCKWOOD®

 Push & Pull Plates 19-20

 Door Pulls and Lock Protectors 20

 Door Stops 20-22

 Flush Bolts, Dust Proof Strikes, Surface Bolts, Roller Latches 22-23

 Door Guards, Silencers, Knockers, Coat Hooks & Misc. Pulls 23

 Coordinators, Automatic Flush Bolts, Filler & Protection Plates..... 24

YALE®

 Masterkeying Program..... 25-26

 Mortise Locks & Cylinders 27-28

 Cylindrical Locks, Grade 1..... 29-30

 Cylindrical Locks, Grade 2 31-33

 Cylindrical Deadbolts..... 34

 Exit Devices..... 35-36

 Exit Device Trim, Mullions & Cylinders 37-39

 Door Closers..... 40-42

 Touchscreen Locks..... 43

Order Form 45-46

Hardwiring Made Easy™



ElectroLynx®
 As part of their promise to provide innovative, fast and effective high security solutions to their customers, certain ASSA ABLOY Group brands offer ElectroLynx®, a universal quick-connect system that simplifies the electrification of the door opening.

ElectroLynx® is a registered trademark of ASSA ABLOY Inc.

Introduction

The ASSA ABLOY FLASHship™ program allows the convenience of placing a single order with Yale for architectural hardware plus accessory products from five different ASSA ABLOY brands. This program contains selected popular products from Markar, McKinney, Pemko, Rixson, Rockwood, and Yale all shipping from our Berlin, Connecticut location within 24-hours.

Enjoy the convenience of one purchase order, one acknowledgement and one invoice; use the FLASHship program today!

Qualifications

To place a qualifying order for the FLASHship program, customer must either

- a. Use the "FLASHship Order Form" and indicate product by FLASHship part number as stated in the current FLASHship program book, or
- b. Use own purchase order with "FLASHship Program" prominently indicated. Also, products must be indicated by their FLASHship part number or by the exact model number for available product configurations in the current FLASHship program book, or
- c. Enter FLASHship order by using the on-line order entry process.

Online Order Entry

FLASHship orders can be entered by using our convenient online order entry system. The dedicated FLASHship icon takes the user directly to the web-based form which offers easy-to-use drop-down menus to assist with product search and selection.

Contact your customer service representative to set up online order entry access and training.

Order Form

Please use the form on pages 43-44 when placing orders for FLASHship products.

Lead Time

Lead time is 24-hours from receipt of order. We reserve the right to limit quantities.

Only items printed in this current publication will be given 24-hour lead times for shipping.

Part Numbers

Specific part numbers are assigned to each unique configuration. These FLASHship part numbers should be included on the purchase order to ensure ease of processing.

Mixed Orders

To ensure expedited processing, FLASHship products must be submitted on separate purchase orders. Any orders received including items that are not currently published in the FLASHship offering will be returned to the customer for re-submittal.

Customer Service

For FLASHship customer service questions and/or issues, call: 800-438-1951

Hours of Operation

8:00 am – 4:30 pm EST

Technical Product Support

For technical questions and/or issues with products, please contact the brands' technical support:

Brand	Hours of Operation	Toll-Free
Markar	7:00 am – 7:00 pm CST	800-824-3018
McKinney	8:00 am – 4:30 pm EST	800-346-7707
Pemko	7:00 am – 7:00 pm CST	800-824-3018
Rixson	8:00 am – 4:30 pm EST	800-457-5670
Rockwood	8:00 am - 7:00 pm EST Mon.-Thurs. 8:00 am - 4:30 pm EST Friday	800-458-2424
Yale	8:00 am – 4:30 pm EST	800-438-1951

Finishes

ANSI/ BHMA Code	Finish Description	US Finish Code
600	Primer	P
603	Zinc Plated	2C
605	Bright Brass, Clear Coated	3
612	Satin Bronze, Clear Coated	10
613	Dark Oxidized Satin Bronze, Oil Rubbed	10B
619	Satin Nickel Plated, Clear Coated	15
625	Bright Chrome Plated	26
626	Satin Chrome Plated	26D
628	Aluminum, Clear Anodized	28
630	Satin Stainless Steel	32D
689	Aluminum Painted	ALM
690	Dark Bronze Painted	
—	Aluminum, Extra Dark Bronze Anodized	314
711	Aluminum, Black Anodized	315
—	Bright Nickel	NP
—	Bright Chrome Plate	CRM
—	Dull Chrome	DCRM
—	Antique Brass	ANT
—	Bright Brass	BRS
—	Satin Nickel	STNN

Fax FLASHship orders to 877-888-2772, email to flashship@assaabloy.com or use Online Order Entry at www.assaabloydss.com/extranet by clicking the FLASHship icon.

Minimum Order

Minimum invoice is \$50.00 net product value.

Quotes

Quoted projects do not qualify for the FLASHship™ program. Standard buying program discounts only.

Freight

All orders are shipped FOB factory/warehouse, except as expressly provided below. When delivered to the Transportation Company, the Purchaser assumes the risk of loss or damage in transit.

Customer orders with net product value in excess of \$1,500.00 for the continental United States and \$2,000.00 for Alaska and Hawaii will be shipped prepaid by the ASSA ABLOY carrier of choice to a single destination point in the United States.

Customer orders with net product value in excess of \$1,500.00 for the continental US and \$2,000.00 for Alaska and Hawaii will be shipped prepaid by the ASSA ABLOY carrier of choice to a single destination point in the United States.

A minimum freight and handling charge of \$15.00 will be charged on orders with net product value of \$400.00 or less.

For orders with net product value greater than \$400.00 and less than \$1,500.00, freight charges will be calculated as a percentage of the net invoice value and will be added to Customer's invoice. The percentage is based on the National U.S. Average On Highway Diesel Fuel Prices as reported by the US Department of Energy in effect at the beginning of each quarter. On the first Monday of each quarter, the new rate will be published on the ASSA ABLOY Door Security Solutions extranet and will go into effect on the 2nd Monday of the quarter. Please refer to the ASSA ABLOY distributor extranet for the rate chart and information on the current freight charge percentage. The percentage in effect at the time of shipment of the order will be charged.

If a customer provides their own freight account number for the freight charges, ASSA ABLOY will apply a handling fee of \$25.00 to the invoice.

Expedited shipping options – If the customer requests an expedited method of shipment such as “Next Day Air” the charges will be prepaid by ASSA ABLOY and the full rate for the service, as published by the carrier, will be added to the customer's invoice.

Packing – ASSA ABLOY will pack, mark and ship the products according to its standard procedures for shipment, unless the parties agree, in writing, that ASSA ABLOY will comply with any special instructions provided by the customer. Special instructions must be submitted, in writing, at time of order placement. Compliance with special instructions may result in an increased price.

Delivery

Orders will be acknowledged and given a scheduled delivery date based on estimated manufacturing lead times. Complete information is required to process all orders. Orders with insufficient information for processing (i.e. part numbers) may be subject to extended lead times which are relative to the time required in obtaining the necessary information for order processing. Manufacturing lead time will begin once all information is received to process an order. Yale will use reasonable efforts to deliver products as estimated, but makes no guarantees as to delivery dates.

Yale will not be liable for back charges incurred based on availability of product or as a result of delays in delivery caused by insufficient information required to process an order. Yale will not be held responsible for delays in delivery caused by strikes, fires, floods or any other causes beyond our control, including the delivery of material to us. Under no circumstances shall Yale be liable or accountable for consequential damages due to failure of delivery.

Changes/Cancellations

Due to the promptness of delivery, no changes or cancellations can be accepted.

Prices

All shipments will be made at prices prevailing at time of shipment.

Terms

Invoices dated the 1st through the 15th will be due for 2% discount on the 10th of the following month. Invoices dated the 16th through the 31st will be due for 2% discount on the 25th of the following month. Net immediately thereafter.

Returned Goods

All FLASHship products returned as “Goodwill” must meet the following criteria to be considered a return:

- Be in original, unmarked and undamaged cartons.
- Shipped and invoiced within the previous 30 days.

No restocking fee will apply. Upon receipt and verification that the returned merchandise meets the foregoing conditions, a credit will be issued for the original invoice amount.

Consult the current Price Books for pricing information and a complete list of Terms & Conditions.

Warranties

All standard limited warranties apply. Consult current Price Books for a complete list of warranty information.



300 Series Hinges

Model #	Description	FLASHship™ #	Approx. Wt. Each (Lbs)
14 Gauge Stainless Steel Pin & Barrel Continuous Hinges			
FM300-83	Edge Mount Pin & Barrel Hinge, Stainless Steel, 83-1/8" Long	085546	12.9
FM300-95	Edge Mount Pin & Barrel Hinge, Stainless Steel, 95" Long	085547	14.8
FM300-79	Edge Mount Pin & Barrel Hinge, Stainless Steel, 79-3/16" Long	085548	12.5
HG305-83	Edge Mount Pin & Barrel Hinge Guard, Double Return, Stainless Steel, 83-1/8" Long	085549	13.5
HG305-95	Edge Mount Pin & Barrel Hinge Guard, Double Return, Stainless Steel, 95" Long	085550	15.5
HG315-83	Edge Mount Pin & Barrel Hinge Guard, Single Return, Stainless Steel, 83-1/8" Long	085551	13.3
HG315-95	Edge Mount Pin & Barrel Hinge Guard, Single Return, Stainless Steel, 95" Long	085552	15.3

Note: FLASHship™ reserves the right to limit quantities.



1502 Spring Hinge



TA2714 Five Knuckle Hinge

Model #	Size (in.)	Options	Finish	FLASHship™ #	Approx. Wt. Each (Lbs)
Spring Hinges - Standard Weight					
1502	4-1/2" x 4-1/2"	-	US26D	085496	1
3 Knuckle Hinges - Heavy Weight					
TA786	4-1/2" x 4-1/2"	-	US26D	085521	2
3 Knuckle Hinges - Standard Weight					
TA714	4-1/2" x 4-1/2"	-	US26D	085520	1
5 Knuckle Hinges - Standard Weight					
TA2314	4-1/2" x 4-1/2"	-	US26D	085513	1
TA2314	4-1/2" x 4-1/2"	NRP	US26D	085514	1
TA2314	4-1/2" x 4-1/2"	-	US32D	085515	1
TA2314	4-1/2" x 4-1/2"	NRP	US32D	085516	1
T2714	4-1/2" x 4-1/2"	-	US26D	085498	1
TA2714	4-1/2" x 4-1/2"	-	USP	085499	1
TA2714	4-1/2" x 4-1/2"	-	US3	085500	1
TA2714	4-1/2" x 4-1/2"	-	US15	085502	1
TA2714	4-1/2" x 4-1/2"	-	US26	085503	1
TA2714	4-1/2" x 4-1/2"	-	US26D	085504	1
TA2714	4-1/2" x 4-1/2"	-	US10	085501	1
TA2714	4-1/2" x 4-1/2"	NRP	US26D	085505	1
TB2714	4-1/2" x 4-1/2"	-	US26D	085508	1
TA2714	5" x 4-1/2"	-	US26D	085509	1
5 Knuckle Hinges - Heavy Weight					
T4A3786	4-1/2" x 4-1/2"	-	US26D	085510	1.5
T4A3786	4-1/2" x 4-1/2"	NRP	US26D	085511	1.5
T4A3786	4-1/2" x 4-1/2"	-	USP	086086	1.5
T4A3786	4-1/2" x 4-1/2"	NRP	USP	086087	1.5
T4A3786	5" x 4-1/2"	-	US26D	085512	2
T4A3386	4-1/2" x 4-1/2"	-	US32D	085517	1.5
T4A3386	4-1/2" x 4-1/2"	NRP	US32D	085518	1.5
T4A3386	5" x 4-1/2"	NRP	US32D	085519	2

Note: FLASHship™ reserves the right to limit quantities.
NRP=Non Removable Pin



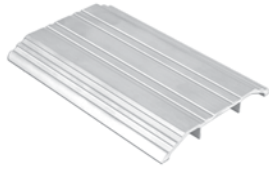
MacPro® MP79 Hinge



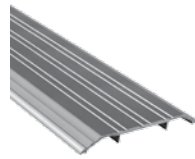
ElectroLynx® Hinge

Model #	Size (in.)	Options	Finish	FLASHship™ #	Approx. Wt. Each (Lbs)
MacPro® Hinges					
MPB79	4-1/2" x 4-1/2"	-	US26D	085527	1
MPB79	4-1/2" x 4-1/2"	NRP	US26D	085528	1
MPB79	4-1/2" x 4-1/2"	-	USP	085529	1
MPB79	4-1/2" x 4-1/2"	-	US10BE	086095	
MPB79	4-1/2" x 4-1/2"	NRP	US10BE	086095	
MPB79	4-1/2" x 4-1/2"	-	US3	086084	1
MPB79	4-1/2" x 4-1/2"	NRP	US3	086085	1
MPB91	4-1/2" x 4-1/2"	-	US32D	085530	1
MPB91	4-1/2" x 4-1/2"	NRP	US32D	085531	1
MP79	4-1/2" x 4-1/2"	-	US26D	085532	1.5
MPB79	4-1/2" x 4-1/2"	NRP	US10BE	086096	1.5
MP79	4-1/2" x 4-1/2"	-	US10BE	086097	1.5
MPB68	4-1/2" x 4-1/2"	-	US26D	085533	1.5
MPB68	4-1/2" x 4-1/2"	NRP	US26D	085534	1.5
MPB99	4-1/2" x 4-1/2"	-	US32D	085535	1.5
MPB99	4-1/2" x 4-1/2"	NRP	US32D	085536	1.5
MPS60	4-1/2" x 4-1/2"	-	US26D	085537	1
ElectroLynx® Hinges					
TA2714	4-1/2" x 4-1/2"	QC4	US26D	085522	1
TA2714	4-1/2" x 4-1/2"	QC8	US26D	085524	1
TA2714	4-1/2" x 4-1/2"	QC12	US26D	085526	1
T4A3786	4-1/2" x 4-1/2"	QC4	US26D	085523	1.5
T4A3786	4-1/2" x 4-1/2"	QC8	US26D	085525	1.5
ElectroLynx® Cables					
QC-C003	3"	12 Wire 22AWG	-	085538	0.1
QC-C200	26"	12 Wire 22AWG	-	085539	0.1
QC-C206	32"	12 Wire 22AWG	-	085540	0.1
QC-C300	38"	12 Wire 22AWG	-	085541	0.1
QC-C306	44"	12 Wire 22AWG	-	085542	0.2
QC-C400	50"	12 Wire 22AWG	-	085543	0.2
QC-C1500	15'2"	12 Wire 22AWG	-	085544	0.7
QC-C1500P	15'2'	12 Wire 22AWG	-	085545	0.7

Note: FLASHship™ reserves the right to limit quantities.



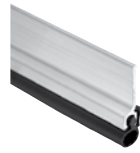
170A Threshold



171A Threshold

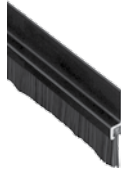
Model #	Description	FLASHship™ #	Approx. Wt. Each (Lbs)
Thresholds			
151A36	3" Flat Saddle Threshold, 1/4" High, 36" Long	085553	1.4
154A36	5" Flat Saddle Threshold, 1/4" High, 36" Long	085554	2.8
170A36	4" Fluted Saddle Threshold, 1/2" High, 36" Long	085555	2.1
170A72	4" Fluted Saddle Threshold, 1/2" High, 72" Long	085558	4.1
170D36	4" Fluted Saddle Threshold, 1/2" High, 36" Long, Dark Bronze	085559	2.1
170A48	4" Fluted Saddle Threshold, 1/2" High, 48" Long	085557	2.8
170A36WS/PA	4" Fluted Saddle Threshold, 1/2" High, 36" Long with Wood Screws and Plastic Anchors	085556	2.1
171A36	5" Fluted Saddle Threshold, 1/2" High, 36" Long	085561	2.7
171A36WS/PA	5" Fluted Saddle Threshold, 1/2" High, 36" Long, With Wood Screws and Plastic Anchors	085562	2.7
171A48	5" Fluted Saddle Threshold, 1/2" High, 48" Long	085563	3.6
171A72	5" Fluted Saddle Threshold, 1/2" High, 72" Long	085564	5.4
171D36	5" Fluted Saddle Threshold, 1/2" High, 36" Long, Dark Bronze	085565	2.7
1715A36	5" Heavy Duty Saddle Threshold, 1/2" High, 36" Long	085560	5.2
172A36	6" Fluted Saddle Threshold, 1/2" High, 36" Long	085566	3.1
172A48	6" Fluted Saddle Threshold, 1/2" High, 48" Long	085567	4.1
172A72	6" Fluted Saddle Threshold, 1/2" High, 72" Long	085568	5.5
172D36	6" Fluted Saddle Threshold, 1/2" High, 36" Long, Dark Bronze	085569	3.1
2548A36	8" Fluted Saddle Threshold, 1/2" High, 36" Long	085601	4
2548A72	8" Fluted Saddle Threshold, 1/2" High, 72" Long	085602	8
270A36	4" Fluted Saddle Threshold, 1/4" High, 36" Long	085603	2
270A72	4" Fluted Saddle Threshold, 1/4" High, 72" Long	085604	3.9
271A36	5" Fluted Saddle Threshold, 1/4" High, 36" Long	085606	2.5
271A48	5" Fluted Saddle Threshold, 1/4" High, 48" Long	085608	3.3
271A72	5" Fluted Saddle Threshold, 1/4" High, 72" Long	085609	5
271D36	5" Fluted Saddle Threshold, 1/4" High, 36" Long, Dark Bronze	085610	2.5
272A36	6" Fluted Saddle Threshold, 1/4" High, 36" Long	085611	3
272A48	6" Fluted Saddle Threshold, 1/4" High, 48" Long	085613	4
272A72	6" Fluted Saddle Threshold, 1/4" High, 72" Long	085614	6.1
272D36	6" Fluted Saddle Threshold, 1/4" High, 36" Long, Dark Bronze	085615	3
2748A36	8" Fluted Saddle Threshold, 1/4" High, 36" Long	085616	3.9
2748A72	8" Fluted Saddle Threshold, 1/4" High, 72" Long	085617	7.8
2005AT36	5" Latching Panic Threshold, 1/2" High, 36" Long with TPE Seal	085584	2.5
2005AT48	5" Latching Panic Threshold, 1/2" High, 48" Long with TPE Seal	085585	3.3
2005AT72	5" Latching Panic Threshold, 1/2" High, 72" Long with TPE Seal	085586	5

Note: FLASHship™ reserves the right to limit quantities.


210AV Door Shoe

303AS Jamb Set

Model #	Description	FLASHship™ #	Approx. Wt. Each (Lbs)
Thresholds (Cont.)			
2008STCxQ380A36	4" Acoustic Threshold, 1/2" High, 36" Long with Encased Foam Seal	085587	1.7
252X3AFG36	5-1/8" Thermal Barrier Saddle Threshold, 1/2" High, 36" Long	085600	3.3
Door Shoes			
210AV36	Aluminum L Shape Door Shoe, Drip Ledge, Vinyl Bottom Seal, 36"	085588	1
210DV36	Dark, Aluminum L Shape Door Shoe, Drip Ledge, Vinyl Bottom Seal, 36"	085589	1
210DV48	Dark, Aluminum L Shape Door Shoe, Drip Ledge, Vinyl Bottom Seal, 48"	085590	1.2
216AV36	Aluminum U Shape Door Shoe, Drip Ledge, Vinyl Bottom Seal, 1-3/4" Door, 36"	085591	1.2
216DV36	Dark, Aluminum U Shape Door Shoe, Drip Ledge, Vinyl Bottom Seal, 1-3/4" Door, 36"	085592	1.2
216PWV36	Painted White, Aluminum U Shape Door Shoe, Drip Ledge, Vinyl Bottom Seal, 1-3/4" Door, 36"	085593	1.2
2173AV36	Aluminum U Shape Door Shoe, Notched Vinyl Bottom Seal, 1-3/4" Door, 36"	085595	1
2173DV36	Dark, Aluminum U Shape Door Shoe, Notched Vinyl Bottom Seal, 1-3/4" Door, 36"	085596	1
221AV36	Aluminum U Shape 3" Door Shoe/Kickplate, Vinyl Bottom Seal, 1-3/4" Door, 36"	085597	3.1
2343AV36	Aluminum Door Shoe, Notched Vinyl Bottom Seal, 1-3/16" Wide, 36"	085598	1
Jamb Sets			
303AS3684	Silicone Perimeter Door Seal Kit, Aluminum Channel, 36" x 84" Opening	085629	1.2
303AS7284	Silicone Perimeter Door Seal Kit, Aluminum Channel, 72" x 84" Opening	085630	1.4
303DS3684	Silicone Perimeter Door Seal Kit, Dark Bronze Aluminum Channel, 36" x 84" Opening	085634	1.2
303AV3684	Vinyl Perimeter Door Seal Kit, Aluminum Channel, 36" x 84" Opening	085631	1.2
303AV3684TK	Vinyl Perimeter Door Seal Kit w/Tek Screws, Aluminum Channel, 36" x 84" Opening	085632	1.2
303DV3684	Vinyl Perimeter Door Seal Kit, Dark Bronze Aluminum Channel, 36" x 84" Opening	085635	1.2
303AV7284	Vinyl Perimeter Door Seal Kit, Aluminum Channel, 72" x 84" Opening	085633	1.4
305CR3684	Perimeter Gasketing, Clear Aluminum Black Sponge EPDM Insert, 36" x 84" Opening	085638	1.2
305CN84	Split Astragal/Meeting Stile Seal, Clear Aluminum, Gray EPDM Insert, 84"	085636	0.5
305CN96	Split Astragal/Meeting Stile Seal, Clear Aluminum, Gray EPDM Insert, 96"	085637	0.6
319CN3684	Perimeter Gasketing, Clear Anodized Aluminum with Black EPDM insert, 36" x 84" Opening	085645	1.8
332CR3684	Perimeter Gasketing, Clear Anodized Aluminum with Black Sponge EPDM insert, 36" x 84" Opening	085646	1.4
Door Sweeps			
18061CNB36	Brush Door Sweep, 3/4" Clear Aluminum Channel, 5/8" Brush, 36" Long	085571	0.4
18061CNB48	Brush Door Sweep, 3/4" Clear Aluminum Channel, 5/8" Brush, 48" Long	085572	0.5
18061CNB84	Brush Door Sweep, 3/4" Clear Aluminum Channel, 5/8" Brush, 84" Long	085573	0.9
18061CNB96	Brush Door Sweep, 3/4" Clear Aluminum Channel, 5/8" Brush, 96" Long	085574	1.2
18061DNB36	Brush Door Sweep, 3/4" Dark Bronze Aluminum Channel, 5/8" Brush, 36" Long	085575	0.4

Note: FLASHship™ reserves the right to limit quantities.



18061DNB Brush Door Sweep 345DV Door Bottom Sweep

Model #	Description	FLASHship™ #	Approx. Wt. Each (Lbs)
Door Sweeps (Cont.)			
18061DNB84	Brush Door Sweep, 3/4" Dark Bronze Aluminum Channel, 5/8" Brush, 84" Long	085576	0.9
18062CNB36	Brush Door Sweep, 7/8" Clear Aluminum Channel, 5/8" Brush, 36" Long	085577	0.6
18062CNB48	Brush Door Sweep, 7/8" Clear Aluminum Channel, 5/8" Brush, 48" Long	085578	0.5
18062CNB84	Brush Door Sweep, 7/8" Clear Aluminum Channel, 5/8" Brush, 84" Long	085579	0.9
18062DNB36	Brush Door Sweep, 7/8" Dark Bronze Aluminum Channel, 5/8" Brush, 36" Long	085580	0.5
18100CNB36	Brush Door Sweep, 7/8" Clear Aluminum Channel, 1" Brush, 36" Long	085581	0.5
18100CNB48	Brush Door Sweep, 7/8" Clear Aluminum Channel, 1" Brush, 48" Long	085582	0.7
18137CNB36	Brush Door Sweep, 7/8" Clear Aluminum Channel, 1-3/8" Brush, 36" Long	085583	0.5
29324CNB84	Snap Cover W/S, Clear Anodized Aluminum, Gray Nylon Brush, 84"	085625	1.5
29326CNB36	Snap Cover W/S, Clear Anodized Aluminum, Gray Nylon Brush, 36"	085626	0.8
29326CNB36	Snap Cover Weatherstrip, Clear Anodized Aluminum, 1/4" x 7/8", with 5/8" Gray Nylon Brush, 36"	085626	0.8
315CN36	Neoprene Door Sweep, 1-1/4" Clear Aluminum Channel, 7/16" Neoprene, 36" Long	085639	0.4
315CN36TK	Neoprene Door Sweep w/Tek Screws, 1-1/4" Clear Aluminum Channel, 7/16" Neoprene, 36" Long	085640	0.4
315CN42	Neoprene Door Sweep, 1-1/4" Clear Aluminum Channel, 7/16" Neoprene, 42" Long	085641	0.5
315CN48	Neoprene Door Sweep, 1-1/4" Clear Aluminum Channel, 7/16" Neoprene, 48" Long	085642	1
315DN36	Neoprene Door Sweep, 1-1/4" Dark Bronze Aluminum Channel, 7/16" Neoprene, 36" Long	085643	0.4
315DN48	Neoprene Door Sweep, 1-1/4" Dark Bronze Aluminum Channel, 7/16" Neoprene, 48" Long	085644	1
345AV36	Door Bottom Sweep w/Rain Drip, Mill Finish Aluminum, Gray Vinyl Insert, 36" Long	085652	0.5
345AV48	Door Bottom Sweep w/Rain Drip, Mill Finish Aluminum, Gray Vinyl Insert, 48" Long	085653	0.6
345DV36	Door Bottom Sweep w/Rain Drip, Dark Bronze Aluminum, Gray Vinyl Insert, 36" Long	085655	0.5
345ANB36	Door Bottom Sweep w/Rain Drip, Mill Finish Aluminum, Nylon Brush Insert, 36" Long	085650	0.5
345A36	Door Bottom Rain Drip, Mill Finish Aluminum, 36" Long	085649	0.5
345D36	Door Bottom Rain Drip, Dark Bronze Aluminum, 36" Long	085654	0.5
345ANB48	Door Bottom Sweep with Rain Drip, Mill Finish Aluminum, Nylon Brush Insert, 48" Long	085651	0.6
3452CNB36	Door Bottom Sweep with Rain Drip, Clear Aluminum, Nylon Brush Insert, 36" Long	085648	0.5
3452AV36	Door Bottom Sweep with Rain Drip, Mill Finish Aluminum, Vinyl Insert, 36" Long	085647	0.5
Overlapping Astragals			
357SP84	Overlapping Astragals, 1/8" Thick, 2" Wide, Galvannealed Steel (11 ga), 84" Long	085661	5.9
357C84	Overlapping Astragals, 1/8" Thick, 2" Wide, Clear Anodized Aluminum, 84" Long	085659	2.1
357SP96	Overlapping Astragals, 1/8" Thick, 2" Wide, Galvannealed Steel (11 ga), 96" Long	085662	6.8
357SS84	Overlapping Astragals, 1/8" Thick, 2" Wide, Stainless Steel (11 ga), 84" Long	085663	9
357C96	Overlapping Astragals, 1/8" Thick, 2" Wide, Clear Anodized Aluminum, 96" Long	085660	2.4

Note: FLASHship™ reserves the right to limit quantities.

Fax 877-888-2772, email flashship@assaabloyusa.com or use Online Order Entry at www.assaabloydss.com|extranet by clicking the FLASHship™ icon.



346C Rain Drip



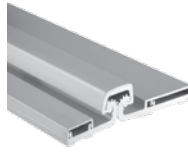
411APKL Automatic Door Bottom

Model #	Description	FLASHship™ #	Approx. Wt. Each (Lbs)
Meeting Stile Split Astragal			
18041CNB84	Brush Meeting Stile Gasketing, 3/4" Clear Aluminum Channel, 3/8" Exposed Brush, 1 piece @84"	085570	0.9
29310CS84	Straight Snap-Cover Meeting Stile, Clear Anodized Aluminum, Silicone Seal, 1 piece @84"	085623	1.5
29324CNB84	Snap Cover W/S, Clear Anodized Aluminum, 1/4" x 7/8", with 3/8" Gray Nylon Brush, 1 piece @84"	085625	1.5
369AP84	Meeting Stile Mill Aluminum Pile Insert, 84"	085664	0.3
Rain Drip			
346C40	Door Top Rain Drip, 2-1/2" Clear Aluminum Projection, 40" Long	085656	1.2
346C52	Door Top Rain Drip, 2-1/2" Clear Aluminum Projection, 52" Long	085657	1.5
346C76	Door Top Rain Drip, 2-1/2" Clear Aluminum Projection, 76" Long	085658	2.2
Automatic Door Bottoms			
411APKL36	Full Mortised Auto Door Bottom, 1-3/8" x 9/16" Aluminum Channel, PemkoPrene™ Insert, Low Closing Force	085667	1.5
411ARL32	Full Mortised Auto Door Bottom, Mill Finish Aluminum with Black Sponge EPDM Insert, 32" Long	085668	1.3
411ARL36	Full Mortised Auto Door Bottom, 1-3/8" x 9/16" Aluminum Channel, Sponge EPDM Insert, Low Closing Force	085669	1.5
411ANBL36	Full Mortised Auto Door Bottom, Mill Finish Aluminum w/ Black Nylon Brush Insert, 36" Long	085666	1.5
434APKL36	Full Mortised Auto Door Bottom, 1-5/16" x 27/32" Aluminum Channel, PemkoPrene™ Insert	085673	1.6
434ARL36	Full Mortised Auto Door Bottom, Mill Finish Aluminum with Black Sponge EPDM Insert, 36" Long	085674	2.5
4131CRL36	Surface and Semi Mortised Auto Door Bottom, Clear Aluminum, Black Sponge EPDM Insert, 36" Long	085671	1.5
4131CPKL36	Surface and Semi Mortised Auto Door Bottom, Clear Aluminum, Black PemkoPrene™ Insert, 36" Long	085670	1.5
4131DRL36	Surface and Semi Mortised Auto Door Bottom, Dark Bronze Aluminum, Black Sponge EPDM Insert, 36" Long	085672	1.5
PDB411AE36	Acoustic Automatic Door Bottom, Full Mortised, Mill Finish Aluminum, Black EPDM Insert, 36" Long	085695	1.5
PDB411AE48	Acoustic Automatic Door Bottom, Full Mortised, Mill Finish Aluminum, Black EPDM Insert, 48" Long	085697	3
PDB4131DE36	Acoustic Automatic Door Bottom, Semi Mortised, Dark Bronze Anodized Aluminum, Black EPDM Insert, 36" Long	085699	1.5
Aluminum Geared Continuous Hinges			
CFM83HD1	Continuous Geared Hinge, Full Mortise, Clear Aluminum, Heavy Duty 83"	085677	6.3
CFM83SLF-HD1	Continuous Geared Hinge, Full Mortise, Short Leaf Flush, Clear Aluminum, Heavy Duty 83"	085678	6

Note: FLASHship™ reserves the right to limit quantities.

Fax 877-888-2772, email flashship@assaabloyusa.com or use Online Order Entry at www.assaabloydss.com | extranet by clicking the FLASHship™ icon.

PEMKO



CFM Continuous Geared Hinges

CFS-CP Continuous Geared Hinges

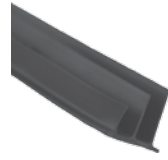
Model #	Description	FLASHship™ #	Approx. Wt. Each (Lbs)
Aluminum Geared Continuous Hinges (Cont.)			
CFM83SLI-HD1	Continuous Geared Hinge, Full Mortise, Short Leaf Inset, Clear Aluminum, Heavy Duty 83"	085679	5.5
CFM95HD1	Continuous Geared Hinge, Full Mortise, Clear Aluminum, Heavy Duty 95"	085680	7.2
CFM95SLF-HD1	Continuous Geared Hinge, Full Mortise, Short Leaf Flush, Clear Aluminum, Heavy Duty 95"	085681	7.2
CFS83	Continuous Geared Hinge, Full Surface, Clear Aluminum, Standard Duty, 83"	085682	7.4
CFS83CP	Continuous Geared Hinge, Full Surface, Center Pivot, Clear Aluminum, Standard Duty, 83"	085683	7.5
CFS83HD1	Continuous Geared Hinge, Full Surface, Clear Aluminum, Heavy Duty 83"	085685	7.4
CFS83CP-HD1	Continuous Geared Hinge, Full Surface, Center Pivot, Clear Aluminum, Heavy Duty 83"	085684	7.7
DFM83HD1	Continuous Geared Hinge, Full Mortise, Dark Bronze Aluminum, Heavy Duty 83"	085686	6.3
DFS83	Continuous Geared Hinge, Full Surface, Dark Bronze Aluminum, Standard Duty, 83"	085687	7.4
Adhesive Gasket			
HSS2000-18	HSS Adhesive Intumescent Gasket, 3/64" x 7/16", 18' Roll	085688	0.2
HSS2000-21	HSS Adhesive Intumescent Gasket, 3/64" x 7/16", 21' Roll	085689	0.4
HSS2000-24	HSS Adhesive Intumescent Gasket, 3/64" x 7/16", 24' Roll	085690	0.4
HSS2000xS88D3684	Combination HSS Adhesive Intumescent Gasket and S88 Silicone Gasketing, Dark Brown, 36" x 84" Opening	085692	0.7
HSS2000xS88D4884	Combination HSS Adhesive Intumescent Gasket and S88 Silicone Gasketing, Dark Brown, 48" x 84" Opening	085693	0.8
HSS2000xS44D4884	Combination HSS Adhesive Intumescent Gasket and S44 Silicone Gasketing, Dark Brown, 48" x 84" Opening	085691	0.5
PK33BL17	PemkoPrene™ Adhesive Perimeter Gasket, 3/16" x 3/8", Black, 17' Roll	085700	0.2
PK33D17	PemkoPrene™ Adhesive Perimeter Gasket, 3/16" x 3/8", Dark Brown, 17' Roll	085702	0.2
PK33BL20	PemkoPrene™ Adhesive Perimeter Gasket, 3/16" x 3/8", Black, 20' Roll	085701	0.2
PK55D17	PemkoPrene™ Adhesive Gasket, 3/16" x 1/2", Dark, 17' Roll	085705	0.3
PK55D20	PemkoPrene™ Adhesive Gasket, 3/16" x 1/2", Dark, 20' Roll	085706	0.3
PK55BL17	PemkoPrene™ Adhesive Gasket, 3/16" x 1/2", Black, 17' Roll	085703	0.3
PK55BL20	PemkoPrene™ Adhesive Gasket, 3/16" x 1/2", Black, 20' Roll	085704	0.3
S44D17	Silicone Fin Smoke Gasket, 5/16" x 7/16", Dark 17' Roll with Self Adhesive	085713	0.5
S44D20	Silicone Fin Smoke Gasket, 5/16" x 7/16", Dark 20' Roll with Self Adhesive	085714	0.6
S44D21	Silicone Fin Smoke Gasket, 5/16" x 7/16", Dark 21' Roll with Self Adhesive	085715	0.6
S44D25	Silicone Fin Smoke Gasket, 5/16" x 7/16", Dark 25' Roll with Self Adhesive	085716	0.8
S44W17	Silicone Fin Smoke Gasket, 5/16" x 7/16", White 17' Roll with Self Adhesive	085717	0.5
S88BL17	Silicone Bulb Smoke Gasket, 1/4" x 1/2", Black, 17' Roll with Self Adhesive	085729	0.5
S88BL20	Silicone Bulb Smoke Gasket, 1/4" x 1/2", Black, 20' Roll with Self Adhesive	085730	0.6
S88BL510	Silicone Bulb Smoke Gasket, 1/4" x 1/2", Black, 510' Roll with Self Adhesive	085731	13.6

Note: FLASHship™ reserves the right to limit quantities.

Fax 877-888-2772, email flashship@assaabloyusa.com or use Online Order Entry at www.assaabloydss.com|extranet by clicking the FLASHship™ icon.



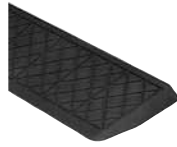
S44D Adhesive Gasket



S773D Adhesive Gasket

Model #	Description	FLASHship™ #	Approx. Wt. Each (Lbs)
Adhesive Gasket (Cont.)			
S88D17	Silicone Bulb Smoke Gasket, 1/4" x 1/2", Dark, 17' Roll with Self Adhesive	085732	0.5
S88D18	Silicone Bulb Smoke Gasket, 1/4" x 1/2", Dark, 18' Roll with Self Adhesive	085733	0.6
S88D20	Silicone Bulb Smoke Gasket, 1/4" x 1/2", Dark, 20' Roll with Self Adhesive	085734	0.6
S88D21	Silicone Bulb Smoke Gasket, 1/4" x 1/2", Dark, 21' Roll with Self Adhesive	085736	0.7
S88D25	Silicone Bulb Smoke Gasket, 1/4" x 1/2", Dark, 25' Roll with Self Adhesive	085737	0.7
S88D204	Silicone Bulb Smoke Gasket, 1/4" x 1/2", Dark, 204' Roll with Self Adhesive	085735	0.6
S88D510	Silicone Bulb Smoke Gasket, 1/4" x 1/2", Dark, 510' Roll with Self Adhesive	085738	13.6
S88W17	Silicone Bulb Smoke Gasket, 1/4" x 1/2", White, 17' Roll with Self Adhesive	085739	0.5
S88W20	Silicone Bulb Smoke Gasket, 1/4" x 1/2", White 20' Roll with Self Adhesive	085740	0.6
S771D7	Silicone Astragal/Meeting Stile Gasket, 9/32" x 7/16", Dark, 7' Roll with Self Adhesive	085719	0.1
S771C7	Silicone Astragal/Meeting Stile Gasket, 9/32" x 7/16", Clear, 7' Roll with Self Adhesive	085718	0.1
S772D7	Silicone Astragal/Meeting Stile Gasket, 3/16" x 1/2", Dark, 7' Roll with Self Adhesive	085720	0.1
S772D8	Silicone Astragal/Meeting Stile Gasket, 3/16" x 1/2", Dark, 8' Roll with Self Adhesive	085721	0.1
S773D17	Silicone Triple Fin Acoustic/Smoke Gasket, 3/8" x 1/2", Dark 17' Roll with Self Adhesive	085724	0.4
S773D18	Silicone Triple Fin Acoustic/Smoke Gasket, 3/8" x 1/2", Dark 18' Roll with Self Adhesive	085725	0.4
S773D20	Silicone Triple Fin Acoustic/Smoke Gasket, 3/8" x 1/2", Dark 20' Roll with Self Adhesive	085726	0.5
S773D21	Silicone Triple Fin Acoustic/Smoke Gasket, 3/8" x 1/2", Dark 21' Roll with Self Adhesive	085727	0.5
S773BL17	Silicone Triple Fin Acoustic/Smoke Gasket, 3/8" x 1/2", Black 17' Roll with Self Adhesive	085722	0.4
S773BL20	Silicone Triple Fin Acoustic/Smoke Gasket, 3/8" x 1/2", Black 20' Roll with Self Adhesive	085723	0.5
S773W17	Silicone Triple Fin Acoustic/Smoke Gasket, 3/8" x 1/2", White 17' Roll with Self Adhesive	085728	0.4
Perimeter Gasket			
369AP84	Meeting Stile Mill Aluminum Pile Insert, 84"	085664	0.3
379CR84	Adjustable Jamb W/S Clear Anodized Aluminum Sponge EPDM Seal, 84"	085665	2.2
45041CNB3684	Door Sweep, 45-Degree Retainer with 13/32" Nylon Brush Clear Anodized , 3/0 x 7/0 Opening	085675	4.3
2891AS36	1/4" x 1-1/2" x 36" Perimeter Gasket, Heavy duty, Mill Aluminum w/Silicone Insert	085619	1.2
2891AS3684	1/4" x 1-1/2" Perimeter Gasket, Heavy Duty, Mill Aluminum, Silicon Insert for 3/0 x 7/0 Opening	085620	7
2891APK3684	1/4" x 1-1/2" Perimeter Gasket, Heavy Duty, Mill Aluminum PemkoPrene™ Seal for 3/0 x 7/0 Opening	085618	7
290APK84	1/4" x 1-1/2" x 84", Jamb Weatherstrip, Mill Aluminum w/PemkoPrene™ seal	085621	1.5
29310CS84	Straight Snap-Cover Meeting Stile, Clear Anodized Aluminum, Silicone Seal, 1 piece @84"	085623	1.5

Note: FLASHship™ reserves the right to limit quantities.



MAG349D Adhesive Gasketing

RR1.25FMR Rubber Ramp

Model #	Description	FLASHship™ #	Approx. Wt. Each (Lbs)
Perimeter Gasket			
29324CNB36	Snap Cover Weatherstrip, Clear Anodized Aluminum, 1/4" x 7/8", with 3/8" Gray Nylon Brush, 36"	085624	0.7
29324CNB84	Snap Cover Meeting Stile, Clear Anodized Aluminum, 1/4" x 7/8", with 3/8" Gray Nylon Brush, 1 piece @84"	085625	1.5
29326CNB36	Snap Cover Weatherstrip, Clear Anodized Aluminum, 1/4" x 7/8", with 5/8" Gray Nylon Brush, 36"	085626	0.8
29326DNB36	Snap Cover Weatherstrip, Dark Bronze Anodized Aluminum, 1/4" x 7/8", with 5/8" Black Nylon Brush, 36"	085627	0.8
297AS3684	Jamb Weatherstrip Mill Aluminum w/Silicone Insert 1/4" x 13/16" for 3/0 x 7/0 Opening	085628	1.2
MAG349D-85	Magnetic Kerf-In Weatherstrip, Dark, Foam with Magnetic Insert, 85" Long	085694	0.6
Q102D-97	Pemko, 5/8" Reach, Encased Foam Kerf-In Weatherstrip, Dark, 97" Long	085709	0.3
Q103D-97	Pemko, 3/8" Reach, Encased Foam Kerf-In Weatherstrip, Dark, 97" Long	085710	0.2
Q106D-97	Pemko, 5/8" Reach, Encased Foam Kerf-In Weatherstrip, Dark, 97" Long	085711	0.3

Model #	Finish	Size	FLASHship™ #	Approx. Wt. Each (Lbs)
Lite Kits (sold in case quantities; 3 lite kits per case)				
LT-B1G	Prime Coat	5" x 20"	086073	?
LT-B1G	Prime Coat	10" x 10"	086074	?
LT-B1G	Prime Coat	4" x 25"	086075	?
LT-B1G	Prime Coat	22" x 28"	086076	?

Note: FLASHship™ reserves the right to limit quantities.



147 Offset Pivot



195 Offset Pivot



370 Center Hung Pivot



EM19 Power Transfer Intermediate Pivot

Model #	Description	Hand	Finish	FLASHship™ #	Approx. Wt. Each (Lbs)
3/4" Offset Pivot Sets (Includes Top Pivot)					
117	Regular (250#) Interior	RH	626	085422	3
117	Regular (250#) Interior	LH	626	085423	3
147	Regular (500#) Interior/Exterior	RH	613	085428	2
147	Regular (500#) Interior/Exterior	LH	613	085429	2
147	Regular (500#) Interior/Exterior	RH	626	085426	2
147	Regular (500#) Interior/Exterior	LH	626	085427	2
L147	Heavy Weight (700#) Lead 1-3/4" Door	LH	613	085433	5
L147	Heavy Weight (700#) Lead 1-3/4" Door	RH	613	085432	5
L147	Heavy Weight (700#) Lead 1-3/4" Door	RH	626	085430	5
L147	Heavy Weight (700#) Lead 1-3/4" Door	LH	626	085431	5
195	Regular (400#) Frame Attached	RH	613	085436	3
195	Regular (400#) Frame Attached	LH	613	085437	3
195	Regular (400#) Frame Attached	RH	626	085434	3
195	Regular (400#) Frame Attached	LH	626	085435	3
Center Hung Pivot Sets (Includes Top Pivot)					
128-3/4	250#	-	613	085441	2
128-3/4	250#	-	626	085440	2
127-3/4	250# Frame Attached	-	613	085439	2
127-3/4	250# Frame Attached	-	626	085438	2
370	400#	-	613	085443	3
370	400#	-	626	085442	3
Intermediate Pivots					
M19	Regular	RH	613	085446	2
M19	Regular	LH	613	085447	2
M19	Regular	RH	626	085444	2
M19	Regular	LH	626	085445	2
EM19	Low Voltage Transfer Pivot, ElectroLynx® 8-Wire	RH	626	085448	2
EM19	Low Voltage Transfer Pivot, ElectroLynx® 8-Wire	LH	626	085449	2

Note: FLASHship™ reserves the right to limit quantities.



Checkmate® Stops & Holders

994 Electromagnetic Holder/Release

Model #	Description	Finish	FLASHship™ #	Approx. Wt. Each (Lbs)
Checkmate® Stops and Holders				
Concealed				
1-326	Heavy Duty Holder, Size 3	613	085457	5
1-326	Heavy Duty Holder, Size 3	630	085455	5
1-336	Heavy Duty Stop, Size 3	613	085456	5
1-336	Heavy Duty Stop, Size 3	630	085454	5
6-336	Low Profile Stop, Size 3	630	085462	5
2-346	Standard Duty Adjustable Combo, Size 3	613	085465	2
2-346	Standard Duty Adjustable Combo, Size 3	630	085464	2
Surface				
9-326	Heavy Duty Holder, Size 3	613	085461	4
9-326	Heavy Duty Holder, Size 3	630	085459	4
9-336	Heavy Duty Stop, Size 3	613	085460	4
9-336	Heavy Duty Stop, Size 3	630	085458	4
10-346	Standard Duty Adjustable Combo, Size 3	613	085467	2
10-346	Standard Duty Adjustable Combo, Size 3	630	085466	2
Electromagnetic Door Holder/Releases				
Triple Voltage Door Holders (12VDC, 24VAC/DC and 120VAC)				
996	Surface Wired	689	085472	2
996	Surface Wired	690	085473	2
994	Adjustable Short Armature Concealed Wiring	689	085470	2
994	Adjustable Short Armature Concealed Wiring	690	085471	2
980	Floor Mounted	689	085468	3
980	Floor Mounted	690	085469	3
997	Wall Mounted	689	086077	2
997	Wall Mounted	690	086078	2
998	Wall Mounted	689	086079	3
998	Wall Mounted	690	086080	3
Armature Extensions				
900	Base Unit	689	085474	0.1
900	Base Unit	690	085475	0.1
900-50	1/2" Armature Extension Filler*	689	085476	0.1
900-50	1/2" Armature Extension Filler*	690	085477	0.1
900-75	3/4" Armature Extension Filler*	689	085478	0.1
900-75	3/4" Armature Extension Filler*	690	085479	0.1
900-100	1" Armature Extension Filler*	689	085480	0.1
900-100	1" Armature Extension Filler*	690	085481	0.1

*Extension spacers and bend must be used with 900 base unit armature extension

Note: FLASHship™ reserves the right to limit quantities.



94C Flush Pull



106 x 70C Pull Plate



70C Push Plate

Model #	Description	Finish	FLASHship™ #	Approx. Wt. Each (Lbs)
Push Plates				
70B	3-1/2" x 15"	US10B	085885	1
70B	3-1/2" x 15"	US28	085886	1
70B	3-1/2" x 15"	US32D	085887	1
70C	4" x 16"	US3	085891	1
70C	4" x 16"	US10B	085888	1
70C	4" x 16"	US26D	085889	1
70C	4" x 16"	US28	085890	1
70C	4" x 16"	US32D	085892	1
70E	6" x 16"	US32D	085893	2
70F	8" x 16"	US32D	085894	2
Flush Pulls				
94	3-1/2" x 5"	US32D	085906	0.6
94BTB	Set BTB	US32D	085907	0.1
94C	3-1/2" x 5"	US32D	085908	0.6
95A	2-3/16" x 3-1/4"	US26D	085909	0.6
95B	2-11/16" x 4-3/16"	US26	085910	0.6
95B	2-11/16" x 4-3/16"	US26D	085911	0.6
Pull Plates				
102 x 70B	5/8" D x 5-1/2" CTC	US32D	085743	2
102 x 70C	5/8" D x 5-1/2" CTC	US32D	085744	2
105 x 70B	3/4" D x 5-1/2" CTC	US32D	085745	2
105 x 70C	3/4" D x 5-1/2" CTC	US32D	085746	2
106 x 70B	3/4" D x 6" CTC	US32D	085748	2
106 x 70C	3/4" D x 6" CTC	US10B	085749	2
106 x 70C	3/4" D x 6" CTC	US32D	085750	2
107 x 70B	3/4" D x 8" CTC	US32D	085752	2
107 x 70C	3/4" D x 8" CTC	US10B	085753	2
107 x 70C	3/4" D x 8" CTC	US32D	085754	2
110 x 70C	1" D x 8" CTC	US32D	085763	3.5
111 x 70C	1" D x 10" CTC	US32D	085765	4
122 x 70C	3/8" x 1-1/4" x 6" CTC	US10B	085766	2
122 x 70C	3/8" x 1-1/4" x 6" CTC	US32D	085767	2
125 x 70C	1" HR x 6" CTC	US32D	085768	2
126 x 70C	1" HR x 8" CTC	US32D	085769	2

Note: FLASHship™ reserves the right to limit quantities.



132 x 70C Pull Plate



Offset Push Bar Set



320 Lock Protector

Model #	Description	Finish	FLASHship™ #	Approx. Wt. Each (Lbs)
Pull Plates (Cont.)				
132 x 70B	Cast x 5-1/2" CTC	US32D	085771	2
132 x 70C	Cast x 5-1/2" CTC	US32D	085772	2
Straight Door Pulls				
106	3/4" x 6"	US32D	085747	1.2
107	3/4" x 8"	US32D	085751	1.4
110	1" x 8"	US32D	085762	3
111	1" x 10"	US32D	085764	3
Offset Door Pulls				
BF157	1" x 10"	US28	085912	2
BF157	1" x 10"	US32D	085915	2
BF157	1" x 10"	314	085913	2
BF157BTB16	1" x 10"	US28	085919	3
BF158	1" x 12"	US32D	085922	4
Offset Push Pull Sets				
BF15747CT3	10" Offset Pull Bar Set	US28	085916	4.8
BF15747CT3	10" Offset Pull Bar Set	US32D	085918	4.8
BF15747CT3	10" Offset Pull Bar Set	315	085917	4.8
Lock Protectors				
320	Protector	US32D	085783	1.5
320CL	Cylindrical Notched	US32D	085784	1.5
321	Mortise	US32D	085785	1.5
Door Stops				
400	Wall; Cast Convex	US26D	085787	0.3
403	Wall; Cast Concave	US10B	085788	0.3
403	Wall; Cast Concave	US26D	085789	0.3
406	Wall; Wrought Convex	US10B	085790	0.2
406	Wall; Wrought Convex	US26D	085791	0.2
406	Wall; Wrought Convex	US32D	085792	0.2
409	Wall; Wrought Concave	US3	085797	0.2
409	Wall; Wrought Concave	US10	085793	0.2
409	Wall; Wrought Concave	US10B	085794	0.2
409	Wall; Wrought Concave	US26	085795	0.2
409	Wall; Wrought Concave	US26D	085796	0.2

Note: FLASHship™ reserves the right to limit quantities.



409 Concave Door Stop



430 Convex Door Stop



441H Dome Stop



446 Door Stop



466 Heavy Duty Door Stop

Model #	Description	Finish	FLASHship™ #	Approx. Wt. Each (Lbs)
Door Stops (Cont.)				
409	Wall; Wrought Concave	US32D	085798	0.2
415	Cast Wall Stop	US26D	085799	0.3
430	Wall; Convex	US26D	085800	0.1
440	Low Dome Stop	US10B	085801	0.2
440	Low Dome Stop	US26D	085802	0.2
441	Low Dome Stop	US10B	085803	0.2
441	Low Dome Stop	US26D	085804	0.2
441CU	Dome Stop w/Riser	US26D	085805	0.3
441H	Cast Universal Dome Stop	US26D	085806	0.2
442	High Dome Stop	US10B	085807	0.2
442	High Dome Stop	US26D	085808	0.2
443	High Dome Stop	US26D	085809	0.2
445	Low Dome Stop	US26D	085810	0.3
446	Round Stop	US10B	085811	0.4
446	Round Stop	US26	085812	0.4
446	Round Stop	US26D	085813	0.4
455	Curved Roller Stop	US26D	085814	0.5
456	Straight Roller Stop	US26D	085815	0.5
456L	Straight Roller Stop	US26D	085816	0.5
459	Spring Loaded Plunger	US26D	085817	1.3
460	Kick Down Stop	ALM	085818	0.1
461	Kick Down Stop	US10B	085819	0.1
461	Kick Down Stop	US26D	085820	0.1
461L	Kick Down Stop	US10B	085821	0.1
461L	Kick Down Stop	US26D	085822	0.1
462	Heavy Duty Stop	US2C	085823	0.6
463	Heavy Duty Stop	US32D	085824	0.6
465	Heavy Duty Stop	US26D	085826	0.6
466	Heavy Duty Stop	N/A	085827	0.6
467	Heavy Duty Stop	N/A	085828	0.6
470	Floor Stop	US26D	085829	0.7
471	Floor Stop	US26D	085830	0.7
472	Floor Stop	US26D	085831	0.7
473	Floor Stop	US26D	085832	0.7
474	Floor Stop	US26D	085833	0.7
476	Floor Stop	US26D	085834	0.7

Note: FLASHship™ reserves the right to limit quantities.



470 Door Stop



555 Flush Bolt



476 Door Stop



570 Dust Strike

Model #	Description	Finish	FLASHship™ #	Approx. Wt. Each (Lbs)
Door Stops (Cont.)				
481	Wall Stop	US26D	085836	0.6
481H	Wall Stop	US26D	085837	0.6
482	Wall Stop	US26D	085838	0.6
483	Wall Stop	US26D	085839	0.6
485	Wall Stop	US26D	085840	0.6
486	Angle Stop	US2C	085841	0.4
487	Heavy Duty Stop	US26D	085842	0.8
491	Automatic Stop	US26D	085843	0.8
494	Automatic Stop	US26D	085844	0.8
518	Brass Wall Stop	US26D	085847	0.2
519	Brass Wall Stop	US26D	085848	0.2
526	Spring Base Stop	NP	085850	0.2
528	Hinge Pin Stop	NP	085851	0.2
Lever Extension Flush Bolts				
550	Flush Bolt	US26D	085852	0.8
555	Flush Bolt	US10B	085853	0.8
555	Flush Bolt	US26	085854	0.8
555	Flush Bolt	US26D	085855	0.8
555	Flush Bolt Extension Rod, 24"	-	086081	1
557	Flush Bolt	US26D	085856	0.8
Dust Proof Strike				
570	Strike	US10B	085857	0.4
570	Strike	US26D	085858	0.4
Surface Bolts				
580-8	8" Bolt Length	US26D	085859	1.1
630-4	4" Bolt Length	US26D	085883	0.8
Roller Latches				
590	w/Cast Strike	US26D	085860	0.6
591	w/ANSI Strike	US26D	085861	0.6
592	w/#161 Strike	US26D	085862	0.6
593	w/Angle Strike	US26D	085863	0.6
594	w/#161 Strike	US26D	085864	0.6

Note: FLASHship™ reserves the right to limit quantities.

ROCKWOOD



580 Surface Bolt



603 Door Guard



614V Door Knocker/Viewer



622 Door Viewer



802 Coat Hook

Model #	Description	Finish	FLASHship™ #	Approx. Wt. Each (Lbs)
Door Guards				
602	Secret Gate Latch	US26D	085865	1
603	Cast Aluminum	CRM	085867	0.4
604	Cast Brass	US26D	085870	0.4
605	Brass	US26D	085871	0.3
606	Clear Rubber	N/A	085872	0.3
Door Silencers				
608	Gray Rubber	N/A	085873	0.01
608CA	Clear Rubber	N/A	085874	0.01
609	Gray Rubber	N/A	085875	0.01
Door Knockers/Viewers				
614V	Knocker/w 190° Viewer	US26D	085876	0.4
620	160° Viewer	CRM	085877	0.1
622	190° Viewer	ANT	085878	0.1
622	190° Viewer	BRS	085879	0.1
622	190° Viewer	CRM	085880	0.1
622	190° Viewer	DCRM	085881	0.1
622	190° Viewer	STNN	085882	0.1
Coat Hooks				
796	Small Hook	US26D	085895	0.3
802	Medium Hook	US26D	085896	0.4
806	Medium Hook	US26D	085897	0.4
Misc. Pulls / Catches				
853	Wire Pull	US26D	085899	0.5
860	Flush Cup Pull	US32D	085900	0.9
872	Cast Flush Pull	US26D	085901	0.9
900	HD Magnetic Catch	ALM	085904	0.4
901	XHD Magnetic Catch	ALM	085905	0.4
Coordinators				
2601AB	Mounting Bracket	Black Prime Coat	085776	1
2601C	Mounting Bracket	Black Prime Coat	085777	1
2660	Coordinator	Black Prime Coat	085741	4.5
2672	Coordinator	Black Prime Coat	085778	4.5
2696	Coordinator	Black Prime Coat	085742	4.5
1700	Universal	Black Prime Coat	085775	3.5
Automatic Flush Bolts				
2842	Automatic	US26D	085779	2.4
2845	Self Latching	US26D	085780	2.4
2942	Automatic	US26D	085781	2.4
2945	Self Latching	US26D	085782	2.4

Note: FLASHship™ reserves the right to limit quantities.

Fax 877-888-2772, email flashship@assaabloyusa.com or use Online Order Entry at www.assaabloydss.com|extranet by clicking the FLASHship™ icon.



2600 Coordinator



1700 Universal Coordinator



2842 Automatic Flush Bolt



R111LPB Trim Protector Bar



K1050 Kick Plate

Model #	Description	Finish	FLASHship™ #	Approx. Wt. Each (Lbs)
Filler Plates				
DFF4	Frame Hinge	Prime Coat	085924	0.02
LF161	Door Edge	Prime Coat	085927	0.02
DF86	Door Edge	Prime Coat	085923	0.02
SFASA	Strike	Prime Coat	085929	0.02
HS42	Hinge Shim	-	085925	0.1
HS44	Hinge Shim	-	085926	0.1
Trim Protection Bars				
R111LPB	Lever Handle Protector	US32D	085928	4.5
Protection Plates				
K1050	4 x 35	US32D	085845	2
K1050	6 x 34	US32D	085884	3
K1050	8 x 34	US10B	085930	4.5
K1050	8 x 34	US32D	085902	4
K1050	8 x 35	US32D	085903	4.5
K1050	10 x 34	US10B	085932	5.5
K1050	10 x 34	US28	085931	3
K1050	10 x 34	US32D	085755	5
K1050	10 x 34 (4BE)	US32D	085757	5
K1050	10 x 34-1/2	US32D	085758	5
K1050	10 x 35	US32D	085759	5.5
K1050	10 x 40	US32D	085760	6
K1050	10 x 46	US32D	085761	5
K1050	12 x 34	US32D	085770	6
K1050	16 x 34	US32D	085774	8
K1050	34 x 34	US32D	085786	17

Note: FLASHship™ reserves the right to limit quantities.

For small masterkeyed systems of 50 changes or less, the FLASHship™ Masterkeying program offers a way to get Yale masterkeyed products in a flash! FLASHship™ MasterKeyed products MUST be ordered through the Online Order Entry portal on the ASSA ABLOY Door Security Solutions extranet site.

- Only orders for new Masterkey systems in PARA keyway will be accepted
- Offered for product in 626, 630 or 689 finishes; all cylinders provided in 626
- Products only available through FLASHship in Berlin, CT

The factory will maintain detailed project and distributor information in the Key Records department based on the MasterKey Registry number.

8800FL Series Mortise Locks - Masterkeyed

Sectional Trim - Single Cylinder Functions

Function	Finish	Trim	Cylinder	Keyway	Keying	Strike	Collar	FLASHship™ #
8805FL Storeroom								
8805FL	626	AUR	2153	PARA	MK	2815	1765.250	085992
8805FL	626	PBR	2153	PARA	MK	2815	1765.250	085993
8807FL Entry								
8807FL	626	AUR	2153	PARA	MK	2815	1765.250	085994
8807FL	626	PBR	2153	PARA	MK	2815	1765.250	085995
8808FL Classroom								
8808FL	626	AUR	2153	PARA	MK	2815	1765.250	085996
8808FL	626	PBR	2153	PARA	MK	2815	1765.250	085997
8822FL Dormitory								
8822FL	626	AUR	2153	PARA	MK	2815	1765.250	085998
8822FL	626	PBR	2153	PARA	MK	2815	1765.250	085999
8847FL Apartment								
8847FL	626	AUR	2153	PARA	MK	2815	1765.250	086000
8847FL	626	PBR	2153	PARA	MK	2815	1765.250	086001

Escutcheon Trim - Single Cylinder Functions

Function	Finish	Trim	Cylinder	Keyway	Keying	Strike	FLASHship™ #
8805FL Storeroom							
8805FL	626	AUCN	2153	PARA	MK	2815	086002
8807FL Entry							
8807FL	626	AUCN	2153	PARA	MK	2815	086003
8808FL Classroom							
8808FL	626	AUCN	2153	PARA	MK	2815	086004
8822FL Dormitory							
8822FL	626	AUCN	2153	PARA	MK	2815	086005
8847FL Apartment							
8847FL	626	AUCN	2153	PARA	MK	2815	086006

Key-in-Lever Cylindrical Masterkeyed Locks

4700LN Series Grade 1 Locks

Function	Finish	Lever	Cylinder	Keyway	Keying	Strike	Latch	Adapter Sleeves	FLASHship™ #
4705LN Storeroom									
4705LN	626	AU	1804	PARA	MK	497	694	14-5305-9078-999	085967
4705LN	626	PB	1804	PARA	MK	497	694	14-5305-9078-999	085968
4705LN	626	MO	1804	PARA	MK	497	694	14-5305-9078-999	085969
4707LN Entry									
4707LN	626	AU	1804	PARA	MK	497	694	14-5305-9078-999	085970
4707LN	626	PB	1804	PARA	MK	497	694	14-5305-9078-999	085971
4707LN	626	MO	1804	PARA	MK	497	694	14-5305-9078-999	085972
4708LN Classroom									
4708LN	626	AU	1804	PARA	MK	497	694	14-5305-9078-999	085973
4708LN	626	PB	1804	PARA	MK	497	694	14-5305-9078-999	085974
4708LN	626	MO	1804	PARA	MK	497	694	14-5305-9078-999	085975

**4600LN Series Grade 2 Locks**

Function	Finish	Lever	Cylinder	Keyway	Keying	Strike	Latch	Adapter Sleeves	FLASHship™ #
4605LN Storeroom									
4605LN	626	AU	1806	PARA	MK	497	MCD234	NA	085976
4605LN	626	PB	1806	PARA	MK	497	MCD234	NA	085977
4605LN	626	MO	1806	PARA	MK	497	MCD234	NA	085978
4607LN Entry									
4607LN	626	AU	1806	PARA	MK	497	MCD234	NA	085979
4607LN	626	PB	1806	PARA	MK	497	MCD234	NA	085980
4607LN	626	MO	1806	PARA	MK	497	MCD234	NA	085981
4608LN Classroom									
4608LN	626	AU	1806	PARA	MK	497	MCD234	NA	085982
4608LN	626	PB	1806	PARA	MK	497	MCD234	NA	085983
4608LN	626	MO	1806	PARA	MK	497	MCD234	NA	085984

**D Series Cylindrical Deadbolts - Masterkeyed
D100 Grade 1**

Function	Finish	Cylinder	Keyway	Keying	Strike	Latch	FLASHship™ #
Cylinder x Thumbturn							
D112	626	1807	PARA	MK	D243	D34	085985
Double Cylinder							
D122	626	1807	PARA	MK	D243	D34	085986
D200 Grade 2							
Cylinder x Thumbturn							
D212	626	1807	PARA	MK	D243	D34	085987
Double Cylinder							
D222	626	1807	PARA	MK	D243	D34	085988

E4761LN Access Control Keypad Lock Cylindrical Grade 1 - Masterkeyed

inTouch Keypad Lock	Finish	Lever	Cylinder	Keyway	Keying	Strike	Latch	Adapter Sleeves	FLASHship™ #
E4761LN	626	AU	1802	Para	MK	497	E694	14-5305-9078-999	085989

Key-in-Lever Exit Device Trim - Masterkeyed

Classroom Function Trim	Finish	Lever	Cylinder	Keyway	Keying	Adapter Sleeves	FLASHship™ #
446F	626	AU	1802	PARA	MK	14-5305-9078-999	085990
446F	626	PB	1802	PARA	MK	14-5305-9078-999	085991

Escutcheon x Lever Exit Device Trim - Masterkeyed

Classroom Function Trim	Finish	Lever	Cylinder	Keyway	Keying	Collar	FLASHship™ #
426F	630	AU	1109	PARA	MK	1765.250	086007
426F	630	PB	1109	PARA	MK	1765.250	086008

Cylinders

Cylinder	Finish	Cylinder	Keyway	Keying	Collar	FLASHship™ #
Mortise Cylinder	626	2153	PARA	MK	1765.250	085933
Rim Cylinder	626	1109	PARA	MK	1765.250	085934

Cut Masterkeys

Cut Masterkeys	FLASHship™ #
RN11	085941



Augusta - AUR



Pacific Beach - PBR

Design	Model #	Finish	Hand	Strike	Cylinder	FLASHship™ #	Approx. Wt. Each (Lbs)
8801FL - Passage or Closet Latch							
AUR	8801FL	613E	RH	2815	—	085398	6
AUR	8801FL	626	RH	2815	—	085015	6
PBR	8801FL	626	RH	2815	—	085016	6
8802FL - Privacy, Bedroom or Bath Lock							
AUR	8802FL	613E	RH	2815	—	085400	6
AUR	8802FL	626	RH	2815	—	085017	6
PBR	8802FL	613E	RH	2815	—	085403	6
PBR	8802FL	626	RH	2815	—	085018	6
8805FL - Storeroom or Closet Lock							
AUR	8805FL	613E	RH	2815	Less Cylinder	085404	6
AUR	8805FL	626	RH	2815	Less Cylinder	085019	6
PBR	8805FL	613E	RH	2815	Less Cylinder	085406	6
PBR	8805FL	626	RH	2815	Less Cylinder	085020	6
8807FL - Entry Lock							
AUR	8807FL	613E	RH	2815	Less Cylinder	085407	6
AUR	8807FL	626	RH	2815	Less Cylinder	085021	6
PBR	8807FL	613E	RH	2815	Less Cylinder	085409	6
PBR	8807FL	626	RH	2815	Less Cylinder	085022	6
8808FL - Classroom Lock							
AUR	8808FL	613E	RH	2815	Less Cylinder	085410	6
AUR	8808FL	626	RH	2815	Less Cylinder	085023	6
PBR	8808FL	626	RH	2815	Less Cylinder	085024	6
8822FL - Dormitory or Exit Lock							
AUR	8822FL	613E	RH	2815	Less Cylinder	085412	7
AUR	8822FL	626	RH	2815	Less Cylinder	085025	7
PBR	8822FL	626	RH	2815	Less Cylinder	085026	7
8847FL - Apartment Corridor Door Lock							
AUR	8847FL	613E	RH	2815	Less Cylinder	085416	7
AUR	8847FL	626	RH	2815	Less Cylinder	085027	7
PBR	8847FL	613E	RH	2815	Less Cylinder	085417	7
PBR	8847FL	626	RH	2815	Less Cylinder	085028	7
8801FL - Passage or Closet Latch							
AUCN	8801FL	613E	RH	2815	—	085399	6.5

Note: FLASHship™ reserves the right to limit quantities.



Augusta - AU x CN

Design	Model #	Finish	Hand	Strike	Cylinder	FLASHship™ #	Approx. Wt. Each (Lbs)
AUCN	8801FL	626	RH	2815	—	085330	6.5
8802FL - Privacy, Bedroom or Bath Lock							
AUCN	8802FL	613E	RH	2815	—	085401	7.5
AUCN	8802FL	626	RH	2815	—	085331	7.5
8805FL - Storeroom or Closet Lock							
AUCN	8805FL	613E	RH	2815	Less Cylinder	085405	7.5
AUCN	8805FL	626	RH	2815	Less Cylinder	085332	7.5
8807FL - Entry Lock							
AUCN	8807FL	613E	RH	2815	Less Cylinder	085408	7.5
AUCN	8807FL	626	RH	2815	Less Cylinder	085333	7.5
8808FL - Classroom Lock							
AUCN	8808FL	613E	RH	2815	Less Cylinder	085411	7.5
AUCN	8808FL	626	RH	2815	Less Cylinder	085334	7.5
8822FL - Dormitory or Exit Lock							
AUCN	8822FL	613E	RH	2815	Less Cylinder	085413	7.5
AUCN	8822FL	626	RH	2815	Less Cylinder	085335	7.5
8847FL - Apartment Corridor Door Lock							
AUCN	8847FL	613E	RH	2815	Less Cylinder	085415	7.5
AUCN	8847FL	626	RH	2815	Less Cylinder	085336	7.5

Mortise Cylinders and Keyblanks

Model #	Description	Key Section	Finish	Collar Size Included	FLASHship™ #	Approx. Wt. Each (Lbs)
Mortise Cylinders						
2153 x 1-1/8"	6-Pin, Keyed Random	PARA	613E	1765.250	085396	0.4
2153 x 1-1/8"	6-Pin, Keyed Random	PARA	626	1765.250	085000	0.4
2553 x 1-1/8"	6-Pin, Schlage® Keyed Random	C	613E	1765.250	085420	0.4
2553 x 1-1/8"	6-Pin, Schlage® Keyed Random	C	626	1765.250	085001	0.4
Mortise Housings						
K660 x 1-3/8"	SFIC Housing Only, Less Core	—	613E	1765.563	085421	0.4
K660 x 1-3/8"	SFIC Housing Only, Less Core	—	626	1765.563	085002	0.4

Model #	Description	Key Section	FLASHship™ #	Approx. Wt. Each (Lbs)
Keyblanks				
RN11	6-Pin Blank	PARA	085006	0.1

Note: FLASHship™ reserves the right to limit quantities.

4700LN Series Grade 1 Cylindrical Locks 2-3/4" Backset



Augusta - AU



Monroe - MO



Pacific Beach - PB

Design	Model #	Finish	Strike	Cylinder	FLASHship™ #	Approx. Wt. Each (Lbs)
4701LN - Passage or Closet Latch						
AU	4701LN	613E	497 ANSI	—	085370	4
AU	4701LN	626	497 ANSI	—	085045	4
MO	4701LN	613E	497 ANSI	—	085372	4
MO	4701LN	626	497 ANSI	—	085239	4
PB	4701LN	613E	497 ANSI	—	085371	4
PB	4701LN	626	497 ANSI	—	085046	4
4702LN - Privacy, Bedroom or Bath Lock						
AU	4702LN	613E	497 ANSI	—	085373	4
AU	4702LN	626	497 ANSI	—	085047	4
MO	4702LN	613E	497 ANSI	—	085375	4
MO	4702LN	626	497 ANSI	—	085240	4
PB	4702LN	613E	497 ANSI	—	085374	4
PB	4702LN	626	497 ANSI	—	085048	4
4705LN - Storeroom or Closet Lock						
AU	4705LN	613E	497 ANSI	1804, 6-Pin, PARA Keyed Random	085376	5
AU	4705LN	613E	497 ANSI	2804, 6-Pin, Schlage® C Keyed Random	085377	5
AU	4705LN	626	497 ANSI	1804, 6-Pin, PARA Keyed Random	085049	5
AU	4705LN	626	497 ANSI	2804, 6-Pin, Schlage® C Keyed Random	085050	5
MO	4705LN	613E	497 ANSI	1804, 6-Pin, PARA Keyed Random	085380	5
MO	4705LN	613E	497 ANSI	2804, 6-Pin, Schlage® C Keyed Random	085381	5
MO	4705LN	626	497 ANSI	1804, 6-Pin, PARA Keyed Random	085241	5
MO	4705LN	626	497 ANSI	2804, 6-Pin, Schlage® C Keyed Random	085242	5
PB	4705LN	613E	497 ANSI	1804, 6-Pin, PARA Keyed Random	085378	5
PB	4705LN	613E	497 ANSI	2804, 6-Pin, Schlage® C Keyed Random	085379	5
PB	4705LN	626	497 ANSI	1804, 6-Pin, PARA Keyed Random	085051	5
PB	4705LN	626	497 ANSI	2804, 6-Pin, Schlage® C Keyed Random	085052	5
4705LN - Storeroom or Closet Lock (Small Format Interchangeable Core)						
BAU	4705LN	613E	497 ANSI	Less Core	085382	5
BAU	4705LN	626	497 ANSI	Less Core	085053	5
4707LN - Entry Lock						
AU	4707LN	613E	497 ANSI	1804, 6-Pin, PARA Keyed Random	085383	5
AU	4707LN	613E	497 ANSI	2804, 6-Pin, Schlage® C Keyed Random	085384	5
AU	4707LN	626	497 ANSI	1804, 6-Pin, PARA Keyed Random	085054	5
AU	4707LN	626	497 ANSI	2804, 6-Pin, Schlage® C Keyed Random	085055	5
MO	4707LN	613E	497 ANSI	1804, 6-Pin, PARA Keyed Random	085387	5

Note: FLASHship™ reserves the right to limit quantities.



Augusta - AU



Monroe - MO



Pacific Beach - PB

Design	Model #	Finish	Strike	Cylinder	FLASHship™ #	Approx. Wt. Each (Lbs)
4707LN - Entry Lock (Cont)						
MO	4707LN	613E	497 ANSI	2804, 6-Pin, Schlage® C Keyed Random	085397	5
MO	4707LN	626	497 ANSI	1804, 6-Pin, PARA Keyed Random	085243	5
MO	4707LN	626	497 ANSI	2804, 6-Pin, Schlage® C Keyed Random	085244	5
PB	4707LN	613E	497 ANSI	1804, 6-Pin, PARA Keyed Random	085385	5
PB	4707LN	613E	497 ANSI	2804, 6-Pin, Schlage® C Keyed Random	085386	5
PB	4707LN	626	497 ANSI	1804, 6-Pin, PARA Keyed Random	085056	5
PB	4707LN	626	497 ANSI	2804, 6-Pin, Schlage® C Keyed Random	085057	5
4707LN - Entry Lock (Small Format Interchangeable Core)						
BAU	4707LN	613E	497 ANSI	Less Core	085388	5
BAU	4707LN	626	497 ANSI	Less Core	085058	5
4708LN - Classroom Lock						
AU	4708LN	613E	497 ANSI	1804, 6-Pin, PARA Keyed Random	085389	5
AU	4708LN	613E	497 ANSI	2804, 6-Pin, Schlage® C Keyed Random	085390	5
AU	4708LN	626	497 ANSI	1804, 6-Pin, PARA Keyed Random	085059	5
AU	4708LN	626	497 ANSI	2804, 6-Pin, Schlage® C Keyed Random	085060	5
MO	4708LN	613E	497 ANSI	1804, 6-Pin, PARA Keyed Random	085393	5
MO	4708LN	613E	497 ANSI	2804, 6-Pin, Schlage® C Keyed Random	085394	5
MO	4708LN	626	497 ANSI	1804, 6-Pin, PARA Keyed Random	085245	5
MO	4708LN	626	497 ANSI	2804, 6-Pin, Schlage® C Keyed Random	085246	5
PB	4708LN	613E	497 ANSI	1804, 6-Pin, PARA Keyed Random	085391	5
PB	4708LN	613E	497 ANSI	2804, 6-Pin, Schlage® C Keyed Random	085392	5
PB	4708LN	626	497 ANSI	1804, 6-Pin, PARA Keyed Random	085061	5
PB	4708LN	626	497 ANSI	2804, 6-Pin, Schlage® C Keyed Random	085062	5
4708LN - Classroom Lock (Small Format Interchangeable Core)						
BAU	4708LN	613E	497 ANSI	Less Core	085395	5
BAU	4708LN	626	497 ANSI	Less Core	085063	5

Note: FLASHship™ reserves the right to limit quantities.

4600LN Series Grade 2 Cylindrical Locks 2-3/4" Backset



Augusta - AU



Monroe - MO



Pacific Beach - PB

Design	Model #	Finish	Strike	Cylinder	FLASHship™ #	Approx. Wt. Each (Lbs)
4601LN - Passage or Closet Latch						
AU	4601LN	613E	497 ANSI	—	085307	4
AU	4601LN	626	497 ANSI	—	085089	4
MO	4601LN	613E	497 ANSI	—	085360	4
MO	4601LN	626	497 ANSI	—	085247	4
PB	4601LN	613E	497 ANSI	—	085308	4
PB	4601LN	626	497 ANSI	—	085090	4
4602LN - Privacy, Bedroom or Bath Lock						
AU	4602LN	613E	497 ANSI	—	085309	4
AU	4602LN	626	497 ANSI	—	085091	4
MO	4602LN	613E	497 ANSI	—	085361	4
MO	4602LN	626	497 ANSI	—	085248	4
PB	4602LN	613E	497 ANSI	—	085310	4
PB	4602LN	626	497 ANSI	—	085092	4
4605LN - Storeroom or Closet Lock						
AU	4605LN	613E	497 ANSI	1806, 6-Pin, PARA Keyed Random	085311	5
AU	4605LN	613E	497 ANSI	2806, 6-Pin, Schlage® C Keyed Random	085312	5
AU	4605LN	626	497 ANSI	1806, 6-Pin, PARA Keyed Random	085093	5
AU	4605LN	626	497 ANSI	2806, 6-Pin, Schlage® C Keyed Random	085094	5
MO	4605LN	613E	497 ANSI	1806, 6-Pin, PARA Keyed Random	085362	5
MO	4605LN	613E	497 ANSI	2806, 6-Pin, Schlage® C Keyed Random	085363	5
MO	4605LN	626	497 ANSI	1806, 6-Pin, PARA Keyed Random	085249	5
MO	4605LN	626	497 ANSI	2806, 6-Pin, Schlage® C Keyed Random	085250	5
PB	4605LN	613E	497 ANSI	1806, 6-Pin, PARA Keyed Random	085313	5
PB	4605LN	613E	497 ANSI	2806, 6-Pin, Schlage® C Keyed Random	085314	5
PB	4605LN	626	497 ANSI	1806, 6-Pin, PARA Keyed Random	085095	5
PB	4605LN	626	497 ANSI	2806, 6-Pin, Schlage® C Keyed Random	085096	5
4605LN - Storeroom or Closet Lock (Small Format Interchangeable Core)						
BAU	4605LN	613E	497 ANSI	Less Core	085315	5
BAU	4605LN	626	497 ANSI	Less Core	085097	5
4607LN - Entry Lock						
AU	4607LN	613E	497 ANSI	1806, 6-Pin, PARA Keyed Random	085316	5
AU	4607LN	613E	497 ANSI	2806, 6-Pin, Schlage® C Keyed Random	085317	5
AU	4607LN	626	497 ANSI	1806, 6-Pin, PARA Keyed Random	085098	5
AU	4607LN	626	497 ANSI	2806, 6-Pin, Schlage® C Keyed Random	085099	5
MO	4607LN	613E	497 ANSI	1806, 6-Pin, PARA Keyed Random	085364	5
MO	4607LN	613E	497 ANSI	2806, 6-Pin, Schlage® C Keyed Random	085365	5
MO	4607LN	626	497 ANSI	1806, 6-Pin, PARA Keyed Random	085251	5
MO	4607LN	626	497 ANSI	2806, 6-Pin, Schlage® C Keyed Random	085252	5
PB	4607LN	613E	497 ANSI	1806, 6-Pin, PARA Keyed Random	085318	5
PB	4607LN	613E	497 ANSI	2806, 6-Pin, Schlage® C Keyed Random	085319	5
PB	4607LN	626	497 ANSI	1806, 6-Pin, PARA Keyed Random	085100	5
PB	4607LN	626	497 ANSI	2806, 6-Pin, Schlage® C Keyed Random	085101	5

Note: FLASHship™ reserves the right to limit quantities.

Fax 877-888-2772, email flashship@assaabloyusa.com or use
Online Order Entry at www.assaabloydss.com|extranet by clicking the FLASHship™ icon.



4600LN Series Grade 2 Cylindrical Locks 2-3/4" Backset



Augusta - AU



Monroe - MO



Pacific Beach - PB

Design	Model #	Finish	Strike	Cylinder	FLASHship™ #	Approx. Wt. Each (Lbs)
4607LN - Entry Lock (Small Format Interchangeable Core)						
BAU	4607LN	613E	497 ANSI	Less Core	085320	5
BAU	4607LN	626	497 ANSI	Less Core	085102	5
4608LN - Classroom Lock						
AU	4608LN	613E	497 ANSI	1806, 6-Pin, PARA Keyed Random	085321	5
AU	4608LN	613E	497 ANSI	2806, 6-Pin, Schlage® C Keyed Random	085322	5
AU	4608LN	626	497 ANSI	1806, 6-Pin, PARA Keyed Random	085103	5
AU	4608LN	626	497 ANSI	2806, 6-Pin, Schlage® C Keyed Random	085104	5
MO	4608LN	613E	497 ANSI	1806, 6-Pin, PARA Keyed Random	085366	5
MO	4608LN	613E	497 ANSI	2806, 6-Pin, Schlage® C Keyed Random	085367	5
MO	4608LN	626	497 ANSI	1806, 6-Pin, PARA Keyed Random	085253	5
MO	4608LN	626	497 ANSI	2806, 6-Pin, Schlage® C Keyed Random	085254	5
PB	4608LN	613E	497 ANSI	1806, 6-Pin, PARA Keyed Random	085323	5
PB	4608LN	613E	497 ANSI	2806, 6-Pin, Schlage® C Keyed Random	085324	5
PB	4608LN	626	497 ANSI	1806, 6-Pin, PARA Keyed Random	085105	5
PB	4608LN	626	497 ANSI	2806, 6-Pin, Schlage® C Keyed Random	085106	5
4608LN - Classroom Lock (Small Format Interchangeable Core)						
BAU	4608LN	613E	497 ANSI	Less Core	085325	5
BAU	4608LN	626	497 ANSI	Less Core	085107	5
4628LN - Communicating Passage Lock						
AU	4628LN	613E	497 ANSI	—	085326	5
AU	4628LN	626	497 ANSI	—	085108	5
MO	4628LN	613E	497 ANSI	—	085368	5
MO	4628LN	626	497 ANSI	—	085255	5
PB	4628LN	613E	497 ANSI	—	085327	5
PB	4628LN	626	497 ANSI	—	085109	5
4655LN - Dummy Trim						
AU	4655LN	613E	—	—	085328	2
AU	4655LN	626	—	—	085110	2
MO	4655LN	613E	—	—	085369	2
MO	4655LN	626	—	—	085256	2
PB	4655LN	613E	—	—	085329	2
PB	4655LN	626	—	—	085111	2

Note: FLASHship™ reserves the right to limit quantities.



Carolina - CA

Design	Model #	Finish	Strike	Cylinder	FLASHship™ #	Approx. Wt. Each (Lbs)
4601 - Passage or Closet Latch						
CA	4601	630	371	—	085257	2
4602 - Privacy, Bedroom or Bath Lock						
CA	4602	630	371	—	085258	2
4605 - Storeroom or Closet Lock						
CA	4605	630	371	1805, 6-Pin, PARA Keyed Random	085262	2.5
CA	4605	630	371	2805, 6-Pin, Schlage® C Keyed Random	085264	2.5
4605 - Storeroom or Closet Lock (Small Format Interchangeable Core)						
BCA	4605	630	371	Less Core	085266	2.5
4607 - Entry Lock						
CA	4607	630	371	1805, 6-Pin, PARA Keyed Random	085270	2.5
CA	4607	630	371	2805, 6-Pin, Schlage® C Keyed Random	085272	2.5
4607 - Entry Lock (Small Format Interchangeable Core)						
BCA	4607	630	371	Less Core	085274	2.5
4608 - Classroom Lock						
CA	4608	630	371	1805, 6-Pin, PARA Keyed Random	085281	2.5
CA	4608	630	371	2805, 6-Pin, Schlage® C Keyed Random	085283	2.5
4608 - Classroom Lock (Small Format Interchangeable Core)						
BCA	4608	630	371	Less Core	085285	2.5
4655 - Dummy Trim						
CA	4655	630	—	—	085286	1

Latchbolts							
Model #	Finish	Front	Backset	Front Width	FLASHship #	Approx. Wt. Each (Lbs)	
Plain							
MCP238	626	Square	2-3/8"	1"	086037	1	
MCP238	613	Square	2-3/8"	1"	086039	1	
Deadlocking							
MCD238	626	Square	2-3/8"	1"	086038	1	
MCD238	613	Square	2-3/8"	1"	086040	1	

Strikes for Cylindrical Locks						
Model #	Finish	Description	FLASHship #	Approx. Wt. Each (lbs)		
70S	626	Full lip Strike with anti-rattle tab	086041	1		
70S	613	Full lip Strike with anti-rattle tab	086044	1		
71S	626	Full lip Strike with anti-rattle tab, rounded corners	086042	1		
71S	613	Full lip Strike with anti-rattle tab, rounded corners	086045	1		
371	626	T-Strike for knob & lever	086043	1		
371	613	T-Strike for knob & lever	086046	1		

Note: FLASHship™ reserves the right to limit quantities.



D212 Deadbolt

Model #	Finish	Strike	Cylinder	FLASHship™ #	Approx. Wt. Each (Lbs)
Cylinder x Thumbturn					
D112	613E	D243	1807, 6-Pin, PARA Keyed Random	086048	2
D112	613E	D243	2807, 6-Pin, Schlage® C Keyed Random	086050	2
D112	626	D243	1807, 6-Pin, PARA Keyed Random	086047	2
D112	626	D243	2807, 6-Pin, Schlage® C Keyed Random	086049	2
D212	613E	D243	1807, 6-Pin, PARA Keyed Random	085337	2
D212	613E	D243	2807, 6-Pin, Schlage® C Keyed Random	085338	2
D212	626	D243	1807, 6-Pin, PARA Keyed Random	085133	2
D212	626	D243	2807, 6-Pin, Schlage® C Keyed Random	085134	2
Cylinder x Thumbturn (Small Format Interchangeable Core)					
B-D112	613E	D243	Less Core	086052	2
B-D112	626	D243	Less Core	086051	2
B-D212	613E	D243	Less Core	085339	2
B-D212	626	D243	Less Core	085135	2
Cylinder x Cylinder					
D122	613E	D243	1808, 6-Pin, PARA Keyed Random	086054	2
D122	613E	D243	2808, 6-Pin, Schlage® C Keyed Random	086056	2
D122	626	D243	1808, 6-Pin, PARA Keyed Random	086053	2
D122	626	D243	2808, 6-Pin, Schlage® C Keyed Random	086055	2
D222	613E	D243	1808, 6-Pin, PARA Keyed Random	085340	2
D222	613E	D243	2808, 6-Pin, Schlage® C Keyed Random	085341	2
D222	626	D243	1808, 6-Pin, PARA Keyed Random	085136	2
D222	626	D243	2808, 6-Pin, Schlage® C Keyed Random	085137	2
Cylinder x Cylinder (Small Format Interchangeable Core)					
B-D122	613E	D243	Less Core	086058	2
B-D122	626	D243	Less Core	086057	2
B-D222	613E	D243	Less Core	085342	2
B-D222	626	D243	Less Core	085138	2
Cylinder x Classroom					
D162	613E	D243	1807, 6-Pin, PARA Keyed Random	086060	2
D162	613E	D243	2807, 6-Pin, Schlage® C Keyed Random	086062	2
D162	626	D243	1807, 6-Pin, PARA Keyed Random	086059	2
D162	626	D243	2807, 6-Pin, Schlage® C Keyed Random	086061	2
D262	613E	D243	1807, 6-Pin, PARA Keyed Random	086067	2
D262	613E	D243	2807, 6-Pin, Schlage® C Keyed Random	086068	2
D262	626	D243	1807, 6-Pin, PARA Keyed Random	086065	2
D262	626	D243	2807, 6-Pin, Schlage® C Keyed Random	086066	2
Cylinder x Classroom (Small Format Interchangeable Core)					
B-D162	613E	D243	Less Core	086064	2
B-D162	626	D243	Less Core	086063	2
B-D262	613E	D243	Less Core	086070	2
B-D262	626	D243	Less Core	086069	2
Blank Plate x Thumbturn					
D242	613E	D243	—	085343	2
D242	626	D243	—	085139	2
Occupancy Indicator x Thumbturn					
D292	613E	D243	—	085419	2
D292	626	D243	—	085418	2
Model #	Finish	Backset	Throw	FLASHship™ #	Approx. Wt. Each (Lbs)
Deadbolt Assemblies					
D38	613	2-3/8"	1"	086072	1
D38	626	2-3/8"	1"	086071	1

Note: FLASHship™ reserves the right to limit quantities.



2100 Rim



2110 Surface Vertical Rod

Model #	Description	Finish	Hand*	Strike	FLASHship™ #	Approx. Wt. Each (Lbs)
2100 - Rim						
2100-36	Rim Exit Device, 36"	630	—	757F	085148	11
2100-36	Rim Exit Device, 36"	689	—	757F	086021	11
2100-48	Rim Exit Device, 48"	630	—	757F	085149	11
2100-48	Rim Exit Device, 48"	689	—	757F	086025	11
2100F-36	3 Hour Fire Rated Rim Exit Device, 36"	630	—	757F	085150	11
2100F-36	3 Hour Fire Rated Rim Exit Device, 36"	689	—	757F	086022	11
2100F-48	3 Hour Fire Rated Rim Exit Device, 48"	630	—	757F	085151	11
2100F-48	3 Hour Fire Rated Rim Exit Device, 48"	689	—	757F	086026	11
2110 - Surface Vertical Rod						
2110-36	SVR Exit Device, 36"	630	RHR	791 Top, 790 Bottom	085152	15
2110-36	SVR Exit Device, 36"	689	RHR	791 Top, 790 Bottom	086023	15
2110F-36	3 Hour Fire Rated SVR Exit Device, 36"	630	RHR	791 Top, 790 Bottom	085154	15
2110F-36	3 Hour Fire Rated SVR Exit Device, 36"	689	RHR	791 Top, 790 Bottom	086024	15

*Units are field reversible

Note: FLASHship™ reserves the right to limit quantities.



1800 Rim



1810 Surface Vertical Rod

Model #	Description	Finish	Hand*	Strike	FLASHship™ #	Approx. Wt. Each (Lbs)
1800 - Rim						
1800-36	Rim Exit Device, 36"	689	—	757F	085163	11
1800-36	Rim Exit Device, 36"	695	—	757F	085287	11
1800-48	Rim Exit Device, 48"	689	—	757F	085164	12
1800-48	Rim Exit Device, 48"	695	—	757F	085288	12
1800F-36	3 Hour Fire Rated Rim Exit Device, 36"	689	—	757F	085165	11
1800F-36	3 Hour Fire Rated Rim Exit Device, 36"	695	—	757F	085289	11
1800F-48	3 Hour Fire Rated Rim Exit Device, 48"	689	—	757F	085166	12
1800F-48	3 Hour Fire Rated Rim Exit Device, 48"	695	—	757F	085290	12
1810 - Surface Vertical Rod						
1810-36	SVR Exit Device, 36"	689	RHR	791 Top, 790 Bottom	085167	15
1810-36	SVR Exit Device, 36"	695	RHR	791 Top, 790 Bottom	085291	15
1810F-36	3 Hour Fire Rated SVR Exit Device, 36"	689	RHR	791 Top, 790 Bottom	085169	15
1810F-36	3 Hour Fire Rated SVR Exit Device, 36"	695	RHR	791 Top, 790 Bottom	085292	15

*Units are field reversible

Note: FLASHship™ reserves the right to limit quantities.

210F Series: Plate Trim



217F Plate Trim

Model #	Finish	Cylinder	FLASHship™ #	Approx. Wt. Each (Lbs)
Dummy Trim Pull Plate				
214F	689	—	085178	1
214F	695	—	085293	1
Nightlatch Cylinder x Pull				
217F	689	Less Cylinder	085179	1
217F	695	Less Cylinder	085294	1

Note: See page 37 for cylinder options

440F Series: Rose Trim



Augusta - AU



Pacific Beach - PB

Design	Model #	Finish	Cylinder	FLASHship™ #	Approx. Wt. Each (Lbs)
Nightlatch					
AU	441F	626	1802, 6-Pin, PARA Keyed Random	086019	2.5
AU	441F	626	2802, 6-Pin, Schlage® C Keyed Random	086020	2.5
AU	441F	689	1802, 6-Pin, PARA Keyed Random	086015	2.5
AU	441F	689	2802, 6-Pin, Schlage® C Keyed Random	086016	2.5
Classroom					
AU	446F	626	1802, 6-Pin, PARA Keyed Random	085180	2.5
AU	446F	626	2802, 6-Pin, Schlage® C Keyed Random	085181	2.5
AU	446F	689	1802, 6-Pin, PARA Keyed Random	086017	2.5
AU	446F	689	2802, 6-Pin, Schlage® C Keyed Random	086018	2.5
AU	446F	695	1802, 6-Pin, PARA Keyed Random	085299	2.5
AU	446F	695	2802, 6-Pin, Schlage® C Keyed Random	085300	2.5
PB	446F	626	1802, 6-Pin, PARA Keyed Random	085182	2.5
PB	446F	626	2802, 6-Pin, Schlage® C Keyed Random	085183	2.5
Classroom (Small Format Interchangeable Core)					
BAU	446F	626	Less Core	085184	2.5
BAU	446F	695	Less Core	085303	2.5
Dummy Free-Wheeling Lever					
AU	448F	626	—	085185	2.5
AU	448F	695	—	085304	2.5
PB	448F	626	—	085186	2.5
PB	448F	695	—	085305	2.5

Note: FLASHship™ reserves the right to limit quantities.

Fax 877-888-2772, email flashship@assaabloyusa.com or use

Online Order Entry at www.assaabloydss.com/extranet by clicking the FLASHship™ icon.



420F Series: Escutcheon Trim

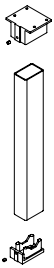


426F Escutcheon Trim

Design	Model #	Finish	Hand*	Cylinder	FLASHship™ #	Approx. Wt. Each (Lbs)
Classroom/Storeroom						
AU	426F	630	RHR	Less Cylinder	085187	2.7
AU	426F	695	RHR	Less Cylinder	085295	2.7
PB	426F	630	RHR	Less Cylinder	085188	2.7
PB	426F	695	RHR	Less Cylinder	085296	2.7
Passage/Dummy						
AU	428F	630	RHR	—	085189	2.7
AU	428F	695	RHR	—	085297	2.7
PB	428F	630	RHR	—	085190	2.7

Note: See page 37 for cylinder options
*Units are field reversible

M200 Series: Removable Mullions



Model #	Description	FLASHship™ #	Approx. Wt. Each (Lbs)
For 8 Ft. Openings			
M200-8	Complete for Panic Exits	085202	37
M200F-8	Complete for Fire Exits	085203	37

Note: FLASHship™ reserves the right to limit quantities.

Cylinders for Exit Device Trims And Mullions

Model #	Description	Key Section	Finish	Collar Size Included	FLASHship™ #	Approx. Wt. Each (Lbs)
Rim Cylinders						
1109	6-Pin, Keyed Random	PARA	613E	1765.250	085344	0.4
1109	6-Pin, Keyed Random	PARA	626	1765.250	085003	0.4
2109	6-Pin, Schlage® Keyed Random	C	613E	1765.250	085345	0.4
2109	6-Pin, Schlage® Keyed Random	C	626	1765.250	085004	0.4
Rim Housings						
K680 x 1-3/8"	SFIC Housing Only, Less Core	—	613E	1765.375	085346	0.5
K680 x 1-3/8"	SFIC Housing Only, Less Core	—	626	1765.375	085005	0.5

Miscellaneous Hardware for Exit Devices

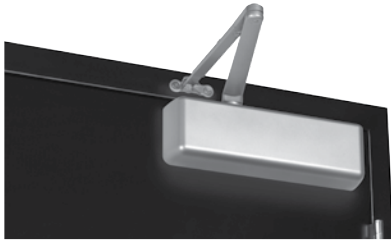
Model #	Description	Finish	FLASHship™ #	Approx. Wt. Each (Lbs)
Extension Rods - For All Exit Device Series				
2010-12	12" (305mm) Length	630	085204	1
2010-12	12" (305mm) Length	689	085205	1
2010-12	12" (305mm) Length	695	085306	1
Shim Kits for 2100 Series				
223	For 2100(F) rim	693	086027	1
224	For 2110(F) SVR	693	086028	1
Strike Pack				
793	Optional for double door applications	—	086029	1

Stand-Alone Door Alarm

Model #	Description	Finish	FLASHship™ #	Approx. Wt. Each (Lbs)
SDA16	Battery-operated door alarm	—	086030	3

Note: FLASHship™ reserves the right to limit quantities.

5800 Series: Cast Iron



5801 Non-Hold Open



5821T Hold Open

Model #	Description	Finish	FLASHship™ #	Approx. Wt. Each (Lbs)
Non-Hold Open With Sleeve Nuts				
5801 x SN	Multi-Size 1-6	689	085230	12
5801 x SN	Multi-Size 1-6	690	085351	12
Non-Hold Open, With Sleeve Nuts				
5821 x SN	Stop Only, Multi-Size 1-6	689	085232	14
5821 x SN	Stop Only, Multi-Size 1-6	690	085352	14
Hold Open With Sleeve Nuts				
5811 x SN	Multi-Size 1-6	689	085231	12
5811 x SN	Multi-Size 1-6	690	085353	12
Hold Open, With Sleeve Nuts				
5821T x SN	Holder/Stop Thumbturn, Multi-Size 1-6	689	085233	14
5821T x SN	Holder/Stop Thumbturn, Multi-Size 1-6	690	085354	14
Accessories				
SN-134	Sleeve Nut Pkg., 1-3/4" Door	689	085225	0.2
SN-134	Sleeve Nut Pkg., 1-3/4" Door	690	085355	0.2
5800RDP	Narrow Frame Drop Plate, regular arm	689	086031	4
5800RDP	Narrow Frame Drop Plate, regular arm	690	086032	4
5800NDP	Narrow Top Rail Drop Plate, parallel arm	689	086033	4
5800NPD	Narrow Top Rail Drop Plate, parallel arm	690	086034	4

- Notes:
- Closers tri-packed
 - Case quantity = 4
 - SN-134 = 4 per pack; supplied standard with all 5800 door closers
 - TBGN134-47 = 4 sets per pack
 - FLASHship™ reserves the right to limit quantities
 - For heavy-duty parallel rigid arm applications, specify 5821 or 5821T, stop is removable

2700 Series: Architectural



2701 Non-Hold Open



2721T Hold Open

Model #	Description	Finish	FLASHship™ #	Approx. Wt. Each (Lbs)
Non-Hold Open, With Sleeve Nuts				
2701	Multi-Size 1-6	689	085191	6.5
2701	Multi-Size 1-6	690	085347	6.5
Non-Hold Open, With Sleeve Nuts				
2721 x SN	Stop Only, Multi-Size 1-6	689	085193	7.75
2721 x SN	Stop Only, Multi-Size 1-6	690	085348	7.75
Hold Open, With Sleeve Nuts				
2711	Multi-Size 1-6	689	085192	6.5
2711	Multi-Size 1-6	690	085349	6.5
Hold Open, With Sleeve Nuts				
2721T x SN	Holder/Stop Thumbturn, Multi-Size 1-6	689	085194	7.75
2721T x SN	Holder/Stop Thumbturn, Multi-Size 1-6	690	085350	7.75
Accessories				
SN-134	Sleeve Nut Pkg., 1-3/4" Door	689	085225	0.2
SN-134	Sleeve Nut Pkg., 1-3/4" Door	690	085355	0.2
3158	Exposed-Back/Narrow Top Rail Drop Plate	689	086035	2
3158	Exposed-Back/Narrow Top Rail Drop Plate	690	086036	2

- Notes:
- Closers tri-packed
 - Case quantity:
2701 = 6
2711, 2721, 2721T = 4
 - SN-134 = 4 per pack; supplied standard with all 2700 door closers
 - TBGN134-38 = 4 sets per pack
 - FLASHship™ reserves the right to limit quantities
 - For heavy-duty parallel rigid arm applications, specify 2721 or 2721T, stop is removable

1100 Series: Industrial



1101BF Non-Hold Open

Model #	Description	Finish	FLASHship™ #	Approx. Wt. Each (Lbs)
Non-Hold Open With Sleeve Nuts				
1101BF	Multi-Size 1-4	689	085227	6
1101BF	Multi-Size 1-4	690	085357	6
Hold Open With Sleeve Nuts				
1111BF	Multi-Size 1-4	689	085228	8
1111BF	Multi-Size 1-4	690	085358	8
Accessories				
1100COV	Optional Cover for 1100 Series	689	085229	0.5
1100COV	Optional Cover for 1100 Series	690	085359	0.5
SN-134	Sleeve Nut Pkg., 1-3/4" Door	689	085225	0.2
SN-134	Sleeve Nut Pkg., 1-3/4" Door	690	085355	0.2

Notes:

- Closers tri-packed
- Case quantity:
1101BF = 6
1111BF = 4
- SN-134 = 4 per pack; supplied standard with all 1100 door closers
- TBGN134-38 = 4 sets per pack
- FLASHship™ reserves the right to limit quantities.



Augusta - AU

Design	Model #	Finish	Strike	Cylinder	FLASHship™ #	Approx. Wt. Each (Lbs)
With Cylinder Override						
AU	E4761LN	626	497 ANSI	1802, 6-Pin, PARA Keyed Random	085236	7.2
AU	E4761LN	626	497 ANSI	2802, 6-Pin, Schlage® C Keyed Random	085237	7.2
With Cylinder Override (Small Format Interchangeable Core)						
BAU	E4761LN	626	497 ANSI	Less Core	085238	7.2

Note: FLASHship™ reserves the right to limit quantities.



ASSA ABLOY is the global leader in door opening solutions, dedicated to satisfying end-user needs for security, safety and convenience.

ASSA ABLOY

Industry-Leading Brands

To bring you the best and most complete security and life-safety solutions, ASSA ABLOY provides the products of brands known for quality, service and innovation. This group of hardware manufacturers works together to create openings that are strong, durable and meet today's needs for advanced safety and security solutions.

MARKAR | www.markar.com
Complete range of continuous hinges

McKINNEY | www.mckinneyhinge.com
Standard hinges, electric hinges, decorative hinges, specialty hinges, and custom hinges

PEMKO | www.pemko.com
Thresholds, gasketing products, continuous geared hinges, lites, louvers and accessories

RIXSON | www.rixson.com
Concealed closers, pivots and mechanical/electromechanical door holders

ROCKWOOD | www.rockwoodmfg.com
Architectural door pulls, door stops and holders, bolts and latches, specialty door trim

YALE | www.yalelocks.com
Mortise, cylindrical & auxiliary locks, exit devices, door closers, electromechanical products, and key systems

www.assaabloydss.com



Scan this Microsoft® Tag with your mobile phone to find your local ASSA ABLOY Door Security Solutions sales representative.

We are where you are. Connect with us online:



www.facebook.com/assaabloydss



www.twitter.com/assaabloydssus

ASSA ABLOY Door Security Solutions

110 Sargent Drive
New Haven, CT 06511
800.DSS.EZ4U (377.3948) | 203.624.5225
www.assaabloydss.com

Copyright © 2013-2015, ASSA ABLOY Door Security Solutions, an ASSA ABLOY Group company. All rights reserved. Reproduction in whole or in part without the express written permission of ASSA ABLOY Door Security Solutions is prohibited.

2500-1707 11/15R