



CORBIN-RUSSWIN CLOSER X ABH HOLDER COMPATIBILITY CHART

BASED ON 36" DOORS, 90 DEG. OPENING, BUTT HINGES

CORBIN-RUSSWIN CLOSER	CONCEALED			SURFACE				
	1000 1000 ADJ	1000SL 1000SA	4000	4400	7000	8000 & HD8000	9000	9000A
DC6200/DC6400 (Reg. Arm)	No	No	Yes	Yes	No	No	No	No
DC6200/DC6400 (Reg. Arm) x 294F40**	Yes	Yes	Yes	Yes	Yes***	No	No	No
DC6210/DC6410 (Par.Arm)	Yes	Yes	Yes	No	No	No	No	No
DC6210/DC6410 x A13 (Par.Arm)	Yes	Yes	Yes	Yes	Yes	No	Yes	Yes
DC6210/DC6420 x M83 (Par.Arm)*	Yes	Yes	Yes	Yes	Yes	Yes	Yes	No
DC6220-DC6420 (Top Jamb)	No	No	Yes	No	No	No	No	No
DC6220/DC6420 x Drop Plate (Top Jamb)	Yes	Yes	Yes	Yes	No	No	Yes	Yes

DC3200 (Reg. Arm)	No	No	Yes	Yes	No	No	No	No
DC3210 (Par. Arm)	Yes	Yes	Yes	No	No	No	No	No
DC3210 x M83 (Par. Arm)*	Yes	Yes	Yes	Yes	Yes	No	Yes	No
DC3220 (Top Jamb)	No	Yes	Yes	No	No	No	No	No
DC3220 x Drop Plate (Top Jamb)	Yes	Yes	Yes	Yes	No	Yes	Yes	Yes

DC8200 (Reg. Arm)	No	Yes	Yes	No	No	No	No	No
DC8200 (Reg. Arm) x 754F24 Plate**	Yes	Yes	Yes	Yes	Yes***	Yes	Yes	Yes
DC8210 (Par. Arm)	Yes	Yes	Yes	No	No	No	No	No
DC8210 x A13 (Par. Arm)	Yes	Yes	Yes	Yes	No	No	Yes	Yes
DC8210 x M83 (Par. Arm)*	Yes	Yes	Yes	Yes	No	No	Yes	No
DC8220 (Top Jamb)	No	Yes	Yes	No	No	No	No	No
DC8220 x Drop Plate (Top Jamb)	Yes	Yes	Yes	Yes	No	No	Yes	Yes

* Minimum 2-7/16" stop width required to install closer bracket and overhead holder bracket in same location

** For interference between the SNB and 297F40 or 754F24 plates, see ABH Template T-CC

***For 7000 Series, door portion must be mounted with SNB.

FOR SOME PARALLEL ARM INSTALLATIONS "NO" IS LISTED BECAUSE THE LOCATION OF THE OVERHEAD HOLDER/STOP BRACKET WILL INTERFERE WITH THE PA BRACKET



DORMA CLOSER X ABH HOLDER COMPATIBILITY CHART

BASED ON 36" DOORS, 90 DEG. OPENING, BUTT HINGES

DORMA CLOSER	CONCEALED			SURFACE				
	1000 1000ADJ	1000SL 1000SA	4000	4400	7000	8000 & HD8000	9000	9000A
8900x AF90 (Reg. Arm)	No	No	No	No	No	No	No	No
8900 x AF90 (Reg. Arm) x BP89**	No	No	Yes	No	No	No	No	No
8900 x AF89P (Par. Arm)	Yes	Yes	Yes	No	No	No	No	No
8900 x PDx AF89 (Par. Arm)	Yes	Yes	Yes	*Yes	Yes	No	*Yes	No
8900 x AF89J (Top Jamb)	No	Yes	Yes	No	No	No	No	No
8900 x BP89 Drop Plate (Top Jamb)	Yes	Yes	Yes	Yes	No	No	No	No
8600 x AF86 (Reg. Arm)	No	Yes	No	No	No	No	No	No
8600 x AF86 (Reg. Arm) x BP86**	No	No	Yes	Yes	No	Yes	No	No
8600 x AF86P (Par. Arm)	Yes	Yes	Yes	No	No	No	No	No
8600 x PD (Par. Arm)	Yes	Yes	Yes	*Yes	Yes	No	*Yes	No
8600 x AF86J (Top Jamb)	No	Yes	Yes	No	No	No	No	No
8600 x DP86 Drop Plate (Top Jamb)	Yes	Yes	Yes	Yes	No	Yes	Yes	No
7400 x AR (Reg. Arm)	No	Yes	No	No	No	No	No	No
7400 x AR (Reg. Arm) x BP74**	No	No	Yes	Yes	No	Yes	No	No
7400 x ARP (Par. Arm)	Yes	Yes	Yes	No	No	No	No	No
7400 x PD (Par. Arm)	Yes	Yes	Yes	*Yes	Yes	No	*Yes	No
7400 x ARJ (Top Jamb)	No	Yes	Yes	No	No	No	No	No
7400 x DP74 Drop Plate (Top Jamb)	Yes	Yes	Yes	Yes	No	Yes	Yes	No
7300 x AR (Reg. Arm)	No	Yes	Yes	No	No	No	No	No
7300 x AR (Reg. Arm) x BP73**	No	No	Yes	Yes	No	Yes	No	No
7300 x ARP (Par. Arm)	Yes	Yes	Yes	No	No	No	No	No
7300 x PD (Par. Arm)	Yes	Yes	Yes	*Yes	Yes	No	*Yes	No
7300 x ARJ (Top Jamb)	No	Yes	Yes	No	No	No	No	No
7300 x DP73 Drop Plate (Top Jamb)	Yes	Yes	Yes	Yes	No	Yes	No	No

* Minimum 2-7/16" stop width required to install closer bracket and overhead holder bracket in same location

** For interference between the SNB and BP89, BP86, PB74, BP73 plates, see ABH Template T-CC

FOR SOME PARALLEL ARM INSTALLATIONS "NO" IS LISTED BECAUSE THE LOCATION OF THE OVERHEAD HOLDER/STOP BRACKET WILL INTERFERE WITH THE PA BRACKET



LCN CLOSER X ABH HOLDER COMPATIBILITY CHART

BASED ON 36" DOORS, 90 DEG. OPENING, BUTT HINGES

LCN CLOSER	CONCEALED			SURFACE				
	1000 1000ADJ	1000SL 1000SA	4000	4400	7000	8000 & HD8000	9000	9000A
4040 (Reg. Arm)	No	No	Yes	Yes	No	Yes	No	No
4040 (Reg. Arm) x 4040-18TJ**	Yes***	Yes***	Yes	Yes	Yes***	Yes	Yes	Yes
4040P (Par. Arm)	Yes	Yes	Yes	No	No	No	No	No
4040P x 62A (Par. Arm)*	Yes	Yes	Yes	Yes	Yes	No	Yes	Yes
4040TJ (Top Jamb)	No	No	No	No	No	No	No	No
4040TJ x 18G (Top Jamb)	Yes	Yes	Yes	Yes	No	No	No	No
4010 (Reg. Arm)	No	No	Yes	Yes	No	No	No	No
4010 (Reg. Arm) x 4020-18**	Yes***	Yes***	Yes	Yes	Yes***	No	No	No
4110 (Par. Arm)	Yes	Yes	Yes	No	No	No	No	No
4110 x 62G (Par. Arm)*	Yes	Yes	Yes	No	No	No	No	No
4020 (Top Jamb)	No	Yes	Yes	No	No	No	No	No
4020 x 18G (Top Jamb)	Yes	Yes	Yes	Yes	No	No	No	No
1461R (Reg. Arm)	No	No	Yes	No	No	No	No	No
1461R (Reg. Arm) X 1461-18**	Yes	Yes	Yes	No	No	No	No	No
1461P (Par. Arm)	Yes	Yes	Yes	No	No	No	No	No
1461P x 62A (Par. Arm)*	Yes	Yes	Yes	Yes	Yes	No	Yes	Yes
1461TJ (Top Jamb)	No	Yes	Yes	No	No	No	No	No
1461TJ x 18 Drop Plate (Top Jamb)	Yes	Yes	Yes	No	No	No	No	No
1261R (Reg. Arm)	No	No	No	No	No	No	No	No
1261R (Reg. Arm) x 1260-18**	Yes	Yes	Yes	No	Yes***	No	No	No
1261P (Par. Arm)	Yes	Yes	Yes	No	No	No	No	No
1261P x 62A (Par. Arm)*	Yes	Yes	Yes	Yes	Yes	No	Yes	Yes
1261TJ (Top Jamb)	No	Yes	Yes	No	No	No	No	No
1261TJ x 18 Drop Plate (Top Jamb)	Yes	Yes	Yes	No	No	No	No	No

*For Stop widths up to and including 3-1/4" wide, 62A and 62G shoes are always mounted in the rabbet opposite the door.

** For interference between the SNB and 297F40 or 754F24 plates, see ABH Template T-CC

***1000 and 1000SL Series use on metal doors only. 7000 Series door portion must be mounted with SNB.

FOR SOME PARALLEL ARM INSTALLATIONS "NO" IS LISTED BECAUSE THE LOCATION OF THE OVERHEAD HOLDER/STOP BRACKET WILL INTERFERE WITH THE PA BRACKET



NORTON/YALE CLOSER X ABH HOLDER COMPATIBILITY CHART

BASED ON 36" DOORS, 90 DEG. OPENING, BUTT HINGES

	CONCEALED			SURFACE				
	1000 1000ADJ	1000SL 1000SA	4000	4400	7000	8000 & HD8000	9000	9000A
NORTON-YALE CLOSER								
7500/4400 (Reg. Arm)	No	No	No	No	No	No	No	No
7500/4400 (Reg Arm x 7786HO Plate)**	Yes***	Yes***	Yes	Yes	Yes***	Yes	Yes	Yes
P7500/P4400 (Par. Arm)	Yes	Yes	Yes	No	No	No	No	No
P7500/P4400 x 2018S/290 (Par. Arm) *	Yes	Yes	Yes	Yes	Yes	Yes	Yes	No
J7500/TJ4400 (Top Jamb)	No	Yes	No	No	No	No	No	No
J7500/TJ4400 x 7787/487 Drop Plate (Top Jamb)	Yes	Yes	Yes	Yes	No	No	Yes	Yes
<hr/>								
7700/400 (Reg. Arm)	No	No	No	No	No	No	No	No
7700/400 (Reg Arm x 7786HO Plate)**	Yes***	Yes***	Yes	Yes	Yes***	Yes	Yes	Yes
R7700/P400 (Par. Arm)	Yes	Yes	Yes	No	No	No	No	No
P7700/P400 x 2018S-290 (Par. Arm) *	Yes	Yes	Yes	Yes	Yes	Yes	Yes	No
J7700/TJ400 (Top Jamb)	No	Yes	No	No	No	No	No	No
J7700/TJ400 x 7787/487 Drop Plate (Top Jamb)	Yes	Yes	Yes	Yes	No	No	Yes	Yes
<hr/>								
8000/3000 (Reg. Arm)	No	No	No	No	No	No	No	No
8000/3000 (Reg. Arm x 8146 Plate)	Yes***	Yes***	Yes	Yes	Yes***	Yes	Yes	Yes
P8000/P3000 (Par. Arm)	Yes	Yes	Yes	No	No	No	No	No
P8000/P3000 x 2018S/290 (Par. Arm) *	Yes	Yes	Yes	Yes	Yes	Yes	Yes	No
J8000/J3000 (Top Jamb)	No	Yes	No	No	No	No	No	No
J8000/J3000 x 8146/3146 Drop Plate (Top Jamb)	Yes	Yes	Yes	Yes	No	No	Yes	Yes
<hr/>								
1600/50BC (Reg. Arm)	No	No	No	No	No	No	No	No
P1600/P50BC (Par. Arm)	Yes	Yes	Yes	No	No	No	No	No
P1600/P50BC x 2018S/290 (Par. Arm) *	Yes	Yes	Yes	Yes	Yes	No	Yes	No
J1600/TJ50BC (Top Jamb)	No	Yes	No	No	No	No	No	No
J1600/TJ50BC x 1688/214 Drop Plate (Top Jamb)	Yes	Yes	Yes	Yes	No	No	Yes	Yes

* Minimum 2-7/16" stop width required. Install closer bracket back from the face of the door to the 1-3/4" dimension indicated on the template in order to install overhead bracket in the same location.

** For interference between the SNB and 7786HO or 8146 plate, see ABH Template T-CC

***1000 and 1000SL Series use on metal doors only. 7000 Series door portion must be mounted with SNB.

FOR SOME PARALLEL ARM INSTALLATIONS "NO" IS LISTED BECAUSE THE LOCATION OF THE OVERHEAD HOLDER/STOP BRACKET WILL INTERFERE WITH THE PA BRACKET



SARGENT CLOSER X ABH HOLDER COMPATIBILITY CHART

BASED ON 36" DOORS, 90 DEG. OPENING, BUTT HINGES

SARGENT CLOSER	CONCEALED			SURFACE				
	1000 1000ADJ	1000SL 1000SA	4000	4400	7000	8000 & HD8000	9000	9000A
281-O (Reg. Arm)	No	No	No	No	No	No	No	No
281-O (Reg. Arm) x 281-B**	Yes	Yes	Yes	Yes	Yes***	Yes	Yes	Yes
281-P9 (Par. Arm)	Yes	Yes	Yes	No	No	No	No	No
281-P3 (Par. Arm)*	Yes	Yes	Yes	Yes	Yes	No	Yes	No
281-O (Top Jamb)	No	Yes	Yes	No	No	No	No	No
281-OZ x 281B Drop Plate (Top Jamb)	Yes	Yes	Yes	Yes	No	Yes	Yes	Yes
<hr/>								
351-O (Reg. Arm)	No	No	No	No	No	No	No	No
351-O (Reg. Arm) x 351-B**	Yes	Yes	Yes	Yes	Yes***	No	No	No
351-P9 (Par. Arm)	Yes	Yes	Yes	No	No	No	No	No
351-P3 (Par. Arm)*	Yes	Yes	Yes	Yes	Yes	No	Yes	No
351-O (Top Jamb)	No	Yes	Yes	No	No	No	No	No
351-OZ x 351B Drop Plate (Top Jamb)	Yes	Yes	Yes	Yes	No	No	Yes	Yes
<hr/>								
1431-O (Reg. Arm)	No	Yes	No	No	No	No	No	No
1431-O (Reg. Arm) x 1430-B**	Yes	Yes	Yes	Yes	Yes***	Yes	Yes	Yes
1431-P9 (Par. Arm)	Yes	Yes	Yes	No	No	No	No	No
1431-P3 (Par. Arm)*	Yes	Yes	Yes	Yes	Yes	No	Yes	No
1431-O (Top Jamb)	No	Yes	Yes	Yes	No	Yes	No	No
1431TJ x 18 Drop Plate (Top Jamb)	Yes	Yes	Yes	Yes	No	Yes	Yes	Yes
<hr/>								
1331-JO (Reg. Arm)	No	Yes	No	No	No	No	No	No
1331-JO (Reg. Arm) x 1330-B**	Yes	Yes	Yes	No	Yes***	No	No	No
1331-JP9 (Par. Arm)	Yes	Yes	Yes	No	No	No	No	No
1331-JO (Top Jamb)	No	Yes	Yes	No	No	No	No	No
1331-JO x 1331B Drop Plate (Top Jamb)	Yes	Yes	Yes	Yes	No	No	No	No

* Minimum 2-7/16" stop width required to install closer bracket and overhead holder bracket in same location

** For interference between the SNB and 297F40 or 754F24 plates, see ABH Template T-CC

***For 7000 Series, door portion must be mounted with SNB.

FOR SOME PARALLEL ARM INSTALLATIONS "NO" IS LISTED BECAUSE THE LOCATION OF THE OVERHEAD HOLDER/STOP BRACKET WILL INTERFERE WITH THE PA BRACKET



STANLEY CLOSER X ABH HOLDER COMPATIBILITY CHART

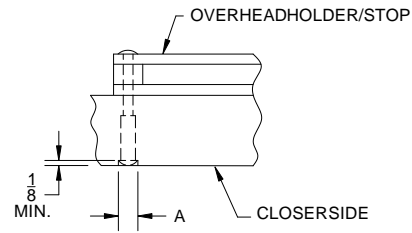
BASED ON 36" DOORS, 90 DEG. OPENING, BUTT HINGES

STANLEY CLOSER	CONCEALED			SURFACE				
	1000 1000ADJ	1000SL 1000SA	4000	4400	7000	8000 & HD8000	9000	9000A
D-3550/D-3551 REG. ARM	No	Yes	No	No	No	No	No	Yes
D-3500/D-3551PA ARM	Yes	Yes	Yes	No	No	No	No	No
D-3550/D-3551 PA W/P45-113	Yes	Yes	Yes	No	No	No	no	No
D-3500/D-3551 TJ	No	Yes	Yes	No	No	No	No	No
D-3550/D-3551 HD ARM	Yes	Yes	Yes	No	No	No	No	No
D-4550/D-4551 REG. ARM	No	No	No	No	No	No	No	Yes
D-4550/D-4551PA ARM	Yes	Yes	Yes	No	No	No	No	No
D-4550/D-4551 PA W/P45-113	Yes	Yes	Yes	No	No	No	No	No
D-4550/D-4551 TJ	No	Yes	Yes	No	No	No	No	No
D-4550/D-4551 HD ARM	Yes	Yes	Yes	No	No	No	No	No
D-1650/D-1651 REG. ARM	No	No	No	No	No	No	No	Yes
D-1650/D-1651 PA ARM	Yes	Yes	Yes	No	No	No	No	No
D-1650/D-1651 TJ	No	Yes	Yes	No	No	No	No	No

FOR SOME PARALLEL ARM INSTALLATIONS "NO" IS LISTED BECAUSE THE LOCATION OF THE OVERHEAD HOLDER/STOP BRACKET WILL INTERFERE WITH THE PA BRACKET

FOR CLOSER AND HOLDER MOUNTING HOLE INTERFERENCE, SEE TEMPLATE T-CC

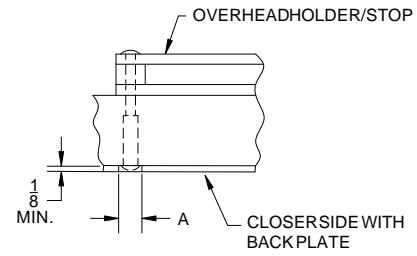
SNB HEAD RECESSED INTO WOOD DOOR
WHEN CONFLICTS OCCUR



MODEL	A
3300ADJ, 4400,	5/8" DIA.
7000, 8000*, HD8000*	11/16" DIA.
9000, 9000ADJ	7/8" DIA.

*HOLD OPEN MODEL CANNOT BE MOUNTED ON PULL SIDE

CLEARANCE HOLE IN BACKPLATE WHEN
CONFLICTS OCCUR IN WOOD OR METAL DOOR



MODEL	A
3300ADJ, 4400,	5/8" DIA.
7000, 8000*, HD8000*	11/16" DIA.
9000, 9000ADJ	7/8" DIA.

*HOLD OPEN MODEL CANNOT BE MOUNTED ON PULL SIDE

OVERHEADHOLDERSWITHCLOSER-01.DWG



www.abhmfg.com
E-mail: abhinfo@abhmfg.com
Architectural Builders Hardware Mfg., Inc.
1222 Ardmore Ave., Itasca, IL 60143
630.875.9900; FAX 800.9FAXABH (932.9224)

©2012 ABHMfg., Inc.
printed in USA

T-CC
REVISED 10-11-12