

A:H[®] ... So much more



Overhead Holders & Stops



Push / Pull Latches



Electro-Magnetic Holders



Electrical Power Transfer



Pivots & Pivot Sets



Rescue Hardware



Aluminum Geared Hinges



Stainless Steel Hinges



Door Edge Guards



Slide Bolts



Custom Strikes



Miscellaneous Hardware



How soon do you need it?????

All products listed below will ship within 3 business days from date of order entry at Standard Buying Program !

- All orders must be clearly marked **Target 1** or the order will default to the standard lead time.
- Orders placed with additional products not listed on the **Target 1** will revert to standard lead time.
- ABH also offers **Target 3** program (50% limited discount) for other products based upon availability.

Overhead Stops & Holders	<ul style="list-style-type: none"> • 1000-US32D – Concealed Mount, Heavy Duty • 9000-US32D – Surface Mount, Heavy Duty • 7000-US32D – Surface Mount, Heavy Duty 	<ul style="list-style-type: none"> • 4000-US32D – Concealed Mount, Medium Duty • 4400-US32D – Surface Mount, Medium Duty
Hospital Push/Pull Latches	<ul style="list-style-type: none"> • 6800-US32D – Low Profile 2-3/4" or 5" Cylindrical Latch • 6000-US32D – 2-3/4" or 5" Cylindrical Latch 	<ul style="list-style-type: none"> • 605912-US32D - 1-1/2" Extended Lip ASA Strike • 605958-US32D - 1-5/8" Extended Lip ASA Strike
Electro-Magnetic Holders	<ul style="list-style-type: none"> • 2100-US28 - Recessed Mount, Tri-Voltage • 2300-US28 - Surface Mount, Tri-Voltage 	<ul style="list-style-type: none"> • 2400-US28 - Flush Mount, Tri-Voltage • 2600-US28 - Single Floor Mount, Tri-Voltage
Aluminum Continuous Geared Hinges	<ul style="list-style-type: none"> • A110HDC083 - Full Concealed, Edge Mount, Clear, 83" • A111HDC083 - Full Concealed, 1/8" Inset, Clear, 83" • A240HDC083 - Full Concealed, Edge Protector, Clear, 83" • A210HDC083 - Full Surface, Swing Clear, Clear, 83" • A570HDC083 - Full Surface, Narrow Frame, Clear, 83" 	<ul style="list-style-type: none"> • A110HDD083 - Full Concealed, Edge Mount, Dark, 83" • A111HDD083 - Full Concealed, 1/8" Inset, Dark, 83" • A240HDD083 - Full Concealed, Edge Protector, Dark, 83" • A210HDD083 - Full Surface, Swing Clear, Dark, 83" • A570HDD083 - Full Surface, Narrow Frame, Dark, 83"
Stainless Steel Pin & Barrel Continuous Hinges	<ul style="list-style-type: none"> • A5000070-SS - Full Concealed, Edge Mount, 83-1/8" • A5020070-SS - Full Surface, 83-1/8" • A5050070-SS - Full Concealed w/ Dual Edge Guards, 83-1/8" • A5110070-SS - Full Concealed, Swing Clear w/ Edge Guard, 83-1/8" • A5150070-SS - Full Concealed w/ Single Edge Guard, 83-1/8" 	
Pivots & Pivot Sets	<ul style="list-style-type: none"> • 0128-US32D – Center Hung Pivot Set (0320 Top Pivot included) • 0147-US32D – Floor Mount Pivot Set , 3/4" Offset (0180 Top Pivot included) • 0195-US32D – Side Jamb Mount Pivot Set, 3/4" Offset (0180 Top Pivot included) • 019-US32D – Intermediate Pivot, 3/4" Offset • 0519-US32D – Pocket Pivot 	
Electrical Power Transfers	<ul style="list-style-type: none"> • PT1000-US28 – (10) 24 AWG Wires • PT200-US28 – (2) 18 AWG Wires 	<ul style="list-style-type: none"> • PT105-US32D – Allows for up to 105 Degree Opening • PT180-US32D – Allows for up to 180 Degree Opening
Flush Bolts	<ul style="list-style-type: none"> • 1860P-US32D – Automatic Flush Bolts for Metal Doors 	<ul style="list-style-type: none"> • 1862P-US32D – Automatic Flush Bolts for Wood Doors
Coordinators	<ul style="list-style-type: none"> • 3780-USP – Universal Coordinator 	<ul style="list-style-type: none"> • 3721-US28 – For Equal Pairs of Doors 56-1/16" – 72"
Surface Bolts	<ul style="list-style-type: none"> • N1815BLT-US32D 8" w/ Top & Bottom Strike & Locking Bracket 	<ul style="list-style-type: none"> • N1815TB-US32D 8" with Top & Bottom Strike
Slide Bolts	<ul style="list-style-type: none"> • 1884A-US32D – Slide Bolt with Locking Feature, ASA Strike 	
Roller Latches	<ul style="list-style-type: none"> • 1890-US32D – Roller Latch with 1-11/16" Cast Strike 	



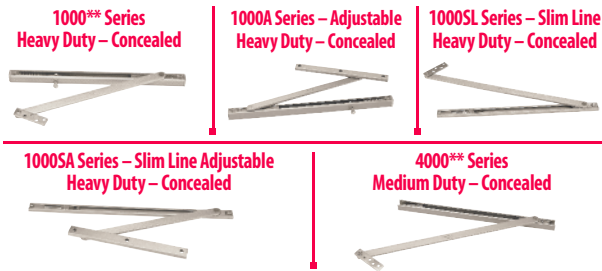
Standard Features

- Meets and/or exceeds BHMA Standard 156.8
- Classified by UL as Miscellaneous Fire Door Accessory (Stop Only)
- Available in most standard BHMA finishes – **Done in-house**
- Contains **no plastic parts**
- Stainless Steel used as standard base material (except the 3500)
- **TARGET 1 QUICK SHIP – US32D****

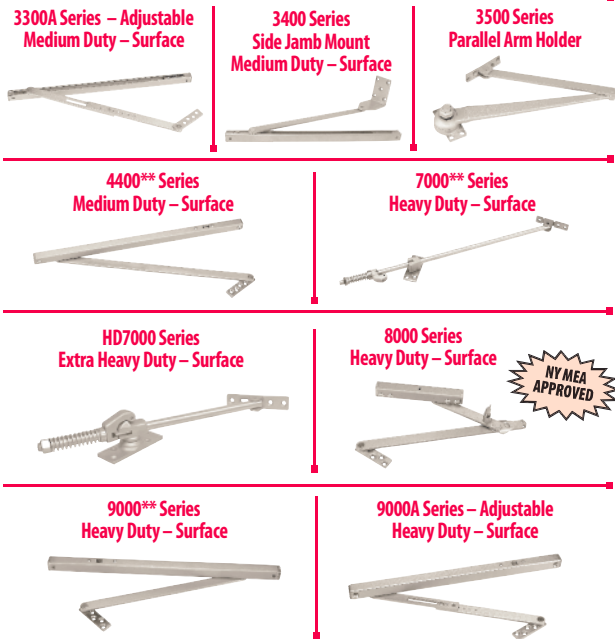
Options

- Angle Jamb Brackets available (44443, 70377, 90541)
- Frame Reinforcements available (R4401, R90541)
- Jamb Bracket Fillers/Shims available (4000JF, 7000JF, 9000JF)
- Hold-Open & Friction Conversion Kits available (Specify model)
- 100% All Stainless Steel (Non-Ferrous) Components available (Prefix "N" Series)
- Custom units available to fit almost any application

Concealed Mount



Surface Mount



Cross Reference							
Type	ABH*	GJ*	ASSA Abloy*			Dorma*	ANSI/BHMA
			Rixson*	Sargent*	Rockwood*		
Concealed Mount - Heavy Duty	1010SL Hold Open	100H	-	-	-	-	C01511
	1020SL Stop	100S	6-x36	1760S	-	-	C01541
	1010SA Hold Open	100HADJ	-	-	-	-	C01511
	1020SA Stop	100SADJ	6ADJ-x36	-	-	-	C01541
	1010 Hold Open	-	1-x26	690H 1710H	11010 OH100H	910H	C01511
	1020 Stop	-	1-x36	690S 1710S	11020 OH100S	910S	C01541
	1030 Friction	-	-	-	11030	910F	C01531
	1010A Hold Open	-	1ADJ-x26	-	-	-	C01511
	1020A Stop	-	1ADJ-x36	-	-	-	C01541
	1030A Friction	-	1ADJ-x16	-	-	-	C01531
Concealed Mount - Medium Duty	4010 Hold Open	410H	2-x26 5-x26	1530H 1720M	14010	710H	C04511
	4020 Stop	410S	2-x36 5-x36	1530S 1720M	14020 OH200S	710S	C04541
	4030 Friction	410F	2-x16	1530F 1720M	14030	710F	C04531
Surface Mount - Medium Duty	4410 Hold Open	450H	10-x26 55-x26	1540H 1700M	14410	700H	C05511
	4420 Stop	450S	10-x36 55-x36	1540S 1700M	14420 OH1000S	700S	C05541
	4430 Friction	450F	10-x16	1540F 1700M	14430	700F	C05531
Surface Mount - Heavy Duty	7010 Hold Open	70H	-	-	17010	-	C08511
	7020 Stop	70S	-	-	17020	-	C08541
	HD7010 Hold Open	79H	-	-	-	-	C08511
	HD7020 Stop	79S	-	-	-	-	C08541
	8010 Hold Open	81H	8-x26	-	-	-	C03511
	8020 Stop	81S	8-x36	-	-	-	C03541
	9010 Hold Open	90H	9-x26	590H 1790H	19010 OH900H	900H	C02511
	9020 Stop	90S	9-x36	590S 1790S	19020 OH900S	900S	C02541
	9030 Friction	90F	9-x16	-	19030	900F	C02531
	9010A Hold Open	-	9ADJ-x26	-	-	-	C02511
9020A Stop	-	9ADJ-x36	-	-	-	C02541	
9030A Friction	-	-	-	-	-	C02531	

*Brand names are trademarks or registered trademarks of their respective companies.

**These Models available on the Target 1 Quick Ship program at no additional cost.

Standard Features

- One continuous spring for smoother operation and extended life
- Least amount of moving parts needed to retract latch in the industry
- Units are non-handed and handles can be mounted horizontal or vertical position (except 6800)
- Units are UL listed
- **TARGET 1 QUICK SHIP – US32D****

Options

- Lead-lining available (Suffix "L")
- Engraved handles "PUSH" & "PULL" (Suffix "P")
- Rounded Covers (Prefix "RC")
- Junior Covers – compact 3-1/2" x 2-3/4" (Prefix "J")
- Hip Paddle (Prefix "H")
- Slip-on Extended Handle (Prefix "X")
- 6" Extended Handle (Prefix "EX")
- Anti-Microbial Coating (Suffix "AM")
- **Extended lip & custom strikes available**

Cross Reference

ABH*	GJ*	ASSA Abloy*			Trimco*
		Rockwood*	Sargent*	Corbin Russwin*	
6000**	HL6	596	-	HL10	-
6800**	HL6	596	114 / 115	-	1562
69800	-	-	HPU15ALP	HP3010 HPSK	-
601LB	-	-	-	-	1593RK
6040	HL6-EO	-	-	-	-
6840	HL6-EO	-	-	-	1562AE
6100	-	-	-	-	-
6200	-	-	-	-	-
6400 / 6500	PL7 / PL8	-	-	-	-
6830	-	-	-	-	1591
6600	HL6-9000	-	7800 PT	-	1562 Q55
69600	-	-	8200 ALP	-	-
6700	-	-	-	-	-
69700	-	-	-	-	-

*Brand names are trademarks or registered trademarks of their respective companies.

These Models available on the **TARGET 1 QUICK SHIP program at no additional cost.

6800** Low Profile Cylindrical Latch



6000** Cylindrical Push/Pull



6830 Low Profile Cylindrical Reverse Latch



6040 Cylindrical Exit Only



6100 Cylindrical 161 Prep (No additional Prep Required)



69800 Ligature Resistant Cylindrical Latch



6200 Cylindrical Asylum (also available for Mortise)



6400/6500 Privacy Cylindrical Push/Pull Latch



"J" Junior Cover Push Pull Latch



"H" Hip Paddle for Push Pull Latch



6600 Series Push/Pull Latch with Mortise Lock Body



69600 Ligature Resistant Push/Pull Latch w/Mortise Lock



6700 Series Push/Pull for OTHER Manufacturers' Mortise Locks



Standard Features

- 30-45 lbs. holding power (except 2510 model = 300 lbs.)
- Meets and/or exceeds ANSI/BHMA Standard 156.15
- UL/ULC listed
- California State Fire Marshall & NYC MEA listed
- All units come **tri-voltage** for installation ease (except 2510 model)
- Door armature has 360° mobility
- No special armature adapter piece required to add extensions
- Positive release button on armature initiates door closing
- **No Plastic Parts**
- Units supplied with a **complimentary 1" extension**
- Offered in US28, US32D, US32 and Painted Finishes
- **TARGET 1 QUICK SHIP – US28****

Options

- Standard size extensions: 3/8", 1/2", 3/4", 1", 2", 4" and 6"
- S20020 Custom Door Armature Extension available (10" or greater)

Cross Reference				
ABH*	ASSA Abloy*		LCN*	Dorma*
	Rixson*	Sargent*		
2100**	FM998 FM997	1561	SEM7850 SEM7840	EM-504 EM-505
2300**	FM996	1560	SEM7830	EM-508
2400**	FM990	-	-	EM-509
2400L	FM989	-	-	-
2510	FM993	-	-	-
2600**	FM980	1562	SEM7820	EM-501
2700	FM981	1563	SEM7870	EM-502

*Brand names are trademarks or registered trademarks of their respective companies.
 These Models available on the **Target 1 Quick Ship program at no additional cost.

Performance Data			
Model	Volts	mAMPS	VA
2100, 2300, 2400, 2400L, 2600, 2700	12DC	60	.72
	24AC	30	.72
	24DC	30	.72
	120AC	30	3.60
2510	24AC/DC	105	1.26

2100**
Recessed Wall Mount



Door Armature = 1 5/8" Projection
Wall = 1" Projection

2300**
Surface Wall Mount



Door Armature = 1 5/8" Projection
Wall = 3" Projection

2400**
Flush Wall Mount



Door Armature = 1 5/8" Projection
Wall = 1/4" Projection

2400L
Flush Wall Mount



Door Armature = 7/8" Projection
Wall = 1/4" Projection

2510
Surface Wall Mount
300 lb.



Door Armature = 2" Projection
Wall = 2 1/16" Projection

2600**
Single Floor Mount



Door Armature = 1 5/8" Projection

2700
Double Floor Mount



Door Armatures = 1 5/8" Projection

S20020
Custom Armature Extension



Special for lengths over 10"

Armatures & Extensions



20120
120° Swivel

20020
Door Armature
1 5/8" Projection

Standard Extensions
3/8", 1/2", 3/4", 1", 2", 4", 6"



Standard Features

- Means of transferring electrical power from frame to door
- PT1000 & PT200 fit into the same prep as EPT-2, EPT-10 and CEPT
- **No plastic parts**
- **TARGET 1 QUICK SHIP****

Cross Reference				
ABH*	Von Duprin*	ASSA Abloy*		Dorma*
		Securitron*	Adams Rite*	
PT1000**	EPT-10	CEPT-10	-	-
PT200**	EPT-2		-	-
PT1000EZ	-	EL-CEPT	-	-
PTC5E	-	CEPT-C5E	-	-
PT105**	-	EPT	-	ES105
PTR105	-	-	4612-1	-
PT180**	-	EPTL	-	-
PTR180	-	-	4612-2	-

*Brand names are trademarks or registered trademarks of their respective companies.

These Models available on the **Target 1 Quick Ship program at no additional cost.

Options

- Molex Connectors available – **EZ Connect**
 - 4-Wire Hinge with Molex (Suffix “EZ4”)
 - 8-Wire Hinge with Molex (Suffix “EZ8”)
 - 12-Wire Hinge with Molex (Suffix “EZ12”)
 - PT1000 - 12-Wire with Molex (Suffix “EZ”)
 - PT200 - 2-Wire with Molex (Suffix “EZ”)
- CAT-5E Cable Wire available – PTC5E
- Security screws available
- Electrified mortise lock bodies available “E6600” – Contact Factory



(10) 24 AWG Wires



(2) 18 AWG Wires

PTR105 / PTR180



Rounded
(No Wire Provided)

PT105 / PT180



Square
(No Wire Provided)

E0340



Electrified Center Hung
Top Pivot

E019



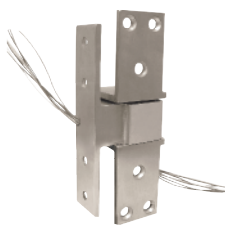
Electrified Intermediate Pivot
8-Wire

EZ Connect



Molex Connector
Option

E0519



Electrified Pocket Pivot
8-Wire

Concealed Thru Wire



4, 8 and 12 wires available
for Continuous Hinges

Removable “R”



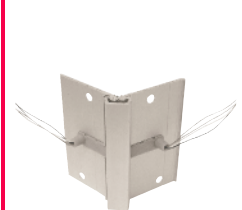
Removable section for
Electrified Aluminum
Geared Hinge (Serviceable)

Moveable “M”



Moveable section for
Electrified Continuous
Hinges (Accessible)

A110RC4



Electrified Geared
Hinge – 4” section
to be field added
to existing hinge

Standard Features

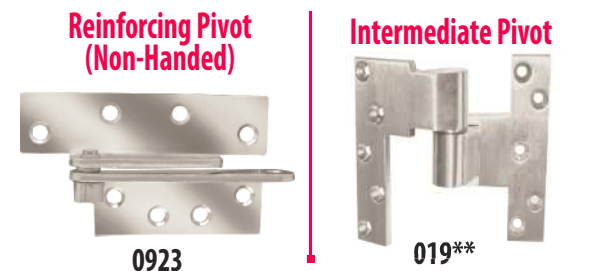
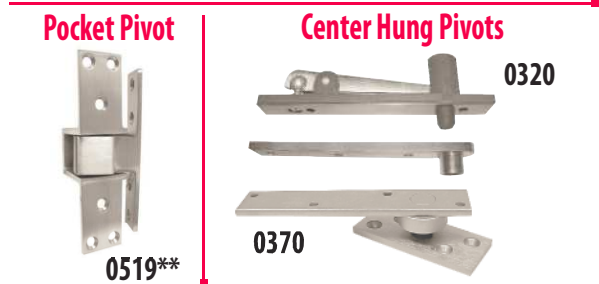
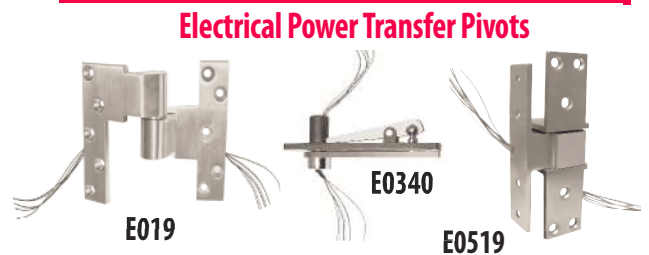
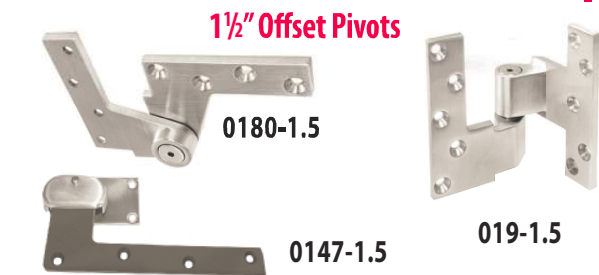
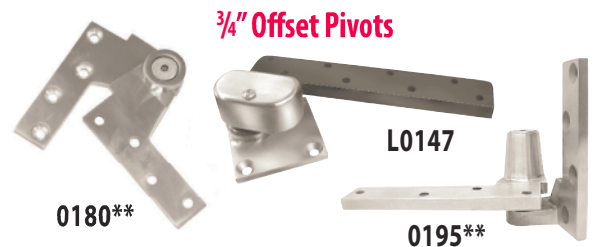
- Stainless Steel base material – **Standard (No additional charge)**
- Heavy duty needle bearings – **Standard (No additional charge)**
- Offset pivots UL/ULC Listed for 3 hours – **Standard (No additional charge)**
- Available in most standard BHMA finishes – **Done in-house**
- **TARGET 1 QUICK SHIP – US32D****

Options

- Electrical power transfer modification available
- Extended spindles and pivot pins available
- Pin-in-torx security screws available
- Custom applications available – Contact factory

Cross Reference					
	ABH*	Rixson*	Ives*	Dorma*	ANSI/BHMA*
3/4" Offset Pivots	0117	117	-	OP440	C07162/C07202
	0117.25	117-1/4	7212	-	C07172
	0117.50	117-1/2	7227	-	C07121/C07202
	0147**	147	7226	OP440	C07162/C07202
	0165	165	-	-	C07162 (modified)
	0180**	180	7215TOP	75120	-
	019**	M19	7215INT	75220	C07321/C07371
	0195**	195	7215	OPJ350	C07131
	0547	547	-	-	C07162 (modified)
	L0117	L117	-	-	C07111
	L0147	L147	7230F	OPL440	C07162/C07202
	L0180	L180	7230FTOP	75140	-
L019	ML19	7230FINT	75240	C07311	
1/8" Inset	0923	-	-	-	-
Center Hung Pivots	0127	127-3/4	7255J	-	C07042
	0128**	128-3/4	-	-	C07032
	0320**	320	-	-	-
	0321	-	-	-	-
	0327	-	-	-	C07042
	0340	340	7255TOP	8062	-
	0370	370	7255	CP440	C07032
1-1/2" Offset Pivots	0147-1.5	147 x 1-1/2	7224F	OP15200	C07162
	0180-1.5	180 x 1-1/2	7244FTOP	15120	-
	019-1.5	M19 x 1-1/2	7244FINT	15220	C07321/C07371
Pocket Pivot	0519**	F519	91105F	75520	C07611
Electrical Power Transfer Pivots	E019	EM19	7215PT	75200	-
	E019-1.5	-	-	-	-
	E0340	EH340	-	E8062	-
	E0519	EF519	91105FPT	-	-
	EL019	EML19	-	-	-

*Brand names are trademarks or registered trademarks of their respective companies.
 These Models available on the **TARGET 1 QUICK SHIP program at no additional cost.



Standard Features

- Stainless Steel base material
- Spring-loaded
- Non-handed unit
- Hold-back option built-in (half-moon style only)
- Can be used with ABH® center hung pivot sets (0127, 0128, 0370, 0327)
- Available in most standard BHMA finishes – **Done in-house**
- Can be ordered with 0127 or 0128 center hung pivot sets for added discount (examples shown below)

SCRM4500



CUSTOM
Size Combination
Rescue Stop
(Any Size Available)

Options

- Also available for use with **mortise locks** – Part Number SCRM4500
- Any custom size available – **Go online for order forms**
- Locking units available – Contact factory

Cross Reference					
	ABH*	Size	McKinney*	Stanley*	Hager*
Double Lipped Strikes	DS4510	5-3/4" x 2-3/4" - Center Hung	DLS-8	DLS-2	451
	DS4520	6-3/4" x 2-3/4" - Center Hung	DLS-8	DLS-2	452
	DS4530	5-3/4" x 2-3/4" - 1/8" Inset	DLS-8	DLS-1	453
	DS4540	6-3/4" x 2-3/4" - 1/8" Inset	DLS-8	DLS-1	454
Rescue Stop/Strike Combo	CR4550	5-3/4" x 2-3/4" - Center Hung	-	-	455
	CR4560	6-3/4" x 2-3/4" - Center Hung	-	-	456
	CR4570	5-3/4" x 2-3/4" - 1/8" Inset	-	-	457
	CR4580	6-3/4" x 2-3/4" - 1/8" Inset	-	-	458
	CR4591	5-3/4" x 2-3/4" - Center Hung	CSS-9	-	-
	CR4592	6-3/4" x 2-3/4" - Center Hung	CSS-9	-	-
	CR4593	6-3/4" x 2-3/4" - 1/8" Inset	CSS-9	-	-
	CR4594	5-3/4" x 2-3/4" - 1/8" Inset	CSS-9	-	-
Rescue Stop	4590	Stand Alone	DS-6	ES-1	610

*Brand names are trademarks or registered trademarks of their respective companies.

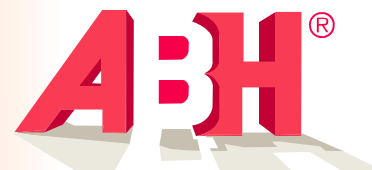
<p>CR4550 / CR4560</p>	<p>CR4570 / CR4580</p>	<p>DS4510 / DS4520</p>	<p>4590 Stand Alone Rescue Stop</p>
<p>CR4591 / CR4592</p> <p>Combination Rescue Stops Center Hung</p>	<p>CR4594 / CR4593</p> <p>Combination Rescue Stops 1/8" Inset</p>	<p>DS4530 / DS4540</p> <p>Double Lipped Strikes</p>	

Rescue Hardware Pivot Sets

<p>012750 Hardware Set 0127 + CR4550 = 012750</p> <p>0127 Center Hung Pivot Set</p>	<p>CR4550 Rescue Stop</p>	<p>012870 Hardware Set 0128 + CR4570 = 012870</p> <p>0128 Center Hung Pivot Set</p>	<p>CR4570 Rescue Stop</p>
---	---------------------------	---	---------------------------



Aluminum Continuous Geared Hinges



Standard Features

- ABH® provides **Heavy Duty hinges at Standard Duty prices**
- Hinges are anodized after milling and drilling
- Extruded 6063-T6 Aluminum Alloy
- UL / ULC Listed
- Standard lengths: 79", 83", 85", 95", and 120"
- **TARGET 1 QUICK SHIP** – 83" Clear and 83" Dark Bronze Anodized**

Options

- Custom anodized & powder coated finishes available
- Full line of hinge modifications **Done in-house – See Cross Reference on right**
- Cut to custom lengths available - **No additional charge**
- Security screws available

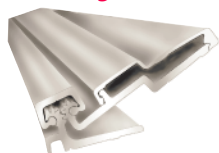
A110**
Full Concealed
Edge Mount



A240**
Full Concealed
w/Door Edge Protector



A210**
Full Surface
Swing Clear



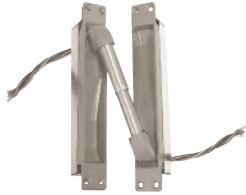
A570**
Full Surface



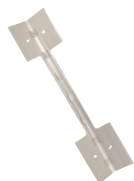
**Hospital Tip
Suffix "HT"**



**PT1000, PT200
Power Transfers**



**Power Transfer Prep
Suffix "PT"**



**TW4, TW8, TW12
Concealed Thru-Wires
(EZ Connect Molex available)**



Cross Reference

	ABH*	Hager*	Select*	ASSAAbloy*		Stanley*	Ives*
				Pemko*	McKinney*		
Full Concealed	A110**	780-112	SL11	FMSLF	MCK-12	661	112
	A110WT	780-235	SL40	WTFM	MCK-WT	-	-
	A111**	780-111	SL18	-	MCK-14	-	-
	A130	780-113	SL71	FMSF	MCK-38	-	-
	A140	-	-	FMSLI	-	-	-
	A240**	780-224	SL24	FM	MCK-25	662	224
	A260	-	SL26	-	-	-	-
	A270	780-226	SL27	FMSLF	-	-	-
	A410	780-041	SL41	OSFM	-	-	-
Half Surface	A211	780-211	-	OSHS	-	-	-
	A213	780-213	-	-	-	-	-
	A450	780-045	-	-	-	-	045
	A460	780-046	-	-	-	-	046
	A530	780-053	SL53	-	-	-	053
	A540	780-054	SL54	HS	MCK-54	663	054
	A550	780-155	-	HSSF	-	-	-
Full Surface	A210**	780-210	SL21	FS	MCK-22	665	210
	A570**	780-157	SL57	FSCP	MCK-58	664	157
	A571	780-057	SL60	FSBP	-	-	-

Aluminum Geared Hinge Modifications

	FR	U/L-STUD	FR3	FIRE PINS	FIRE PINS KIT	FP	-
Fire Studs - 3-Hour Fire Rating (Metal Frame/Metal Door)	FR	U/L-STUD	FR3	FIRE PINS	FIRE PINS KIT	FP	-
Hospital Tip	HT	Avail	HT	HT	HT	HT	-
Dutch Door	DD	Avail	DD	-	DD	Avail	-
School Cap	SC	Avail	SO	-	-	Avail	-
Power Transfer Cut-Out	PT	EPT	EPT	PT	PT	EPT	EPT
Concealed Elec. Thru-Wire (Indicate # of Wires)	TW4	ETW-4	CTW-4	CC-4	-	CE-54	TW4
	TW8	ETW-8	CTW-8	CC-8	-	CE-58	TW8
	TW12	-	CTW-12	CC-12	-	-	-
Concealed Elec. Thru-Wire w/ "EZ" Molex Connectors (Indicate # of Wires)	EZ4	QC	-	QC-4	QC-4	-	-
	EZ8	QC	-	QC-8	QC-8	-	-
	EZ12	-	-	QC-12	QC-12	-	-
Exposed Electrical Contacts (Indicate # of Contacts)	EC	E	EC	-	-	-	-
Exposed Electrical Switch	ES	E1S	EMS	-	-	-	-
Concealed Electrical	EM	EMN	-	-	-	CS	-
Concealed Electrical Thru-Wire & Monitoring Switch (Indicate # of Wires)	MT	ETM	EMS/CTW	-	-	-	-
Moveable Electrical Access (One Continuous Hinge Cap)	M	-	AP	ACC	ACC	-	-
Removeable Electrical Access (3-Section Hinge)	R	RETW	RP	SER	SER	-	-
Magnetic Monitoring Prep	MM	-	CMG	CM	MM	-	-

*Brand names are trademarks or registered trademarks of their respective companies.

These Models available on the **TARGET 1 QUICK SHIP program at no additional cost.

Innovation, Quality, Customer Service . . . **ABH**® Makes Life Simple



Tel (630) 875-9900 • Fax (800) 932-9224 • www.abhmfg.com • abhinfo@abhmfg.com

Stainless Steel Pin & Barrel Continuous Hinges



Standard Features

- Meets ANSI/BHMA Standard A156.26
- All 304 14 gauge Stainless Steel (A5500-12 gauge)
- UL and ULC Listed for 3 hours
- Standard lengths: 78³/₄", 83¹/₈", 85", 95" and 118³/₄"
- Custom lengths and modifications available
- **TARGET 1 QUICK SHIP – 83¹/₈" US32D****

Options

- Custom powder coated finishes available – **Contact Factory**
- Full line of hinge modifications **Done in-house** – **See Cross Reference on right**

A500**
Full Concealed



A505**
Concealed w/ Edge Guard



A506
Half Surface w/Edge Guard



A502**
Full Surface



A515** Concealed
w/Edge Guard



A511**
Swing Clear w/Edge Guard



TW4, TW8, TW12
Concealed Thru-Wires
(EZ Connect Molex available)



A500HT
Welded Hospital Tip



Cross Reference

	ABH*	ASSA Abloy*		Hager*	Stanley*	Ives*
		Markar*	McKinney*			
Full Concealed	A500**	FM300	MCK-FM300	790-900	651	700
	A500WT	FM300WT	-	-	-	-
	A505**	HG305	MCK-HG305	790-905	652	705
	A511**	HG311	MCK-HG311	790-911	656	711
	A515**	HG315	MCK-HG315	790-915	653	715
	A526	HG326	MCK-HG326	790-926	-	-
A5500	FM3500	MCK-FM3500	-	651HD	-	
Full Surface	A502**	FS302	MCK-FS302	-	657	702
Half Surface	A503	HS303	MCK-HS303	790-903	-	-
Half Mortise	A504	HM304	MCK-HM304	790-904	654	-
	A506	HG306	MCK-HG306	790-906	655	-
Stainless Steel Hinge Modifications						
Hospital Tip	HT	HT-MP	HT	HT	HT	HT
Dutch Door	DD	DDP-MP	DDP	DD	DD	DD
Power Transfer Cut-Out	PT	CTP	EPT	EPT	EPT	EPT
Security Pins	SP	AVAIL	SECURITY STUDS	-	AVAIL	-
Welded End Pins	WP	AVAIL	WELD END PINS	-	AVAIL	-
Sheared Leaf	SL	AVAIL	SHEARED LEAF	-	AVAIL	-
Adjustable Studs	AS	AS	AS	-	-	-
Clinical Bearings	CB	MB	MB	-	-	-
Lead-Lined Cover	LL	LL-MP	LL	-	-	-
Raised Barrel (Swaged)	RB	RB-MP	RB	AVAIL	RB	-
Concealed Electrical Thru-Wire (Specify # of Wires)	TW4	-	CC-4	ETW-4	-	TW4
	TW8	-	CC-8	ETW-8	CE-600	TW8
	TW12	-	-	-	-	-
Concealed Electrical Thru-Wires with Molex Connectors - EZ Connect (Specify # of Wires)	EZ4	EL4	EL4	ETW-4	-	TW4
	EZ8	EL8	EL8	ETW-8	-	TW8
	EZ12	EL12	EL12	-	-	-
Moveable Panel for Electrical Thru-Wire Access	M	ETAP	ETAP	-	-	-
Power Transfer Contact Switch for 16 AMP Surge Current, 1/4-20 Screw Posts to Accommodate Any Gauge Wire (No Wire Provided)	CT-4	-	-	-	-	-
	CT-8	-	-	-	-	-
Exposed Monitoring Switch	ES	-	ES	EIS	-	-
Adjustable Monitoring	AMS	AMS	AMS	-	-	-

*Brand names are trademarks or registered trademarks of their respective companies.

These Models available on the **Target 1 Quick Ship program at no additional cost.

Innovation, Quality, Customer Service . . . **ABH** Makes Life Simple

Tel (630) 875-9900 • Fax (800) 932-9224 • www.abhmfg.com • abhinfo@abhmfg.com



Standard Features

- 304 Stainless Steel material
- UL Rated
- Standard Finishes – US32D, US32, US3^Δ, US4^Δ, US10^Δ, US10B^Δ
- #6 x 5/8" FH SMS fasteners
- Specify any length up to 120"

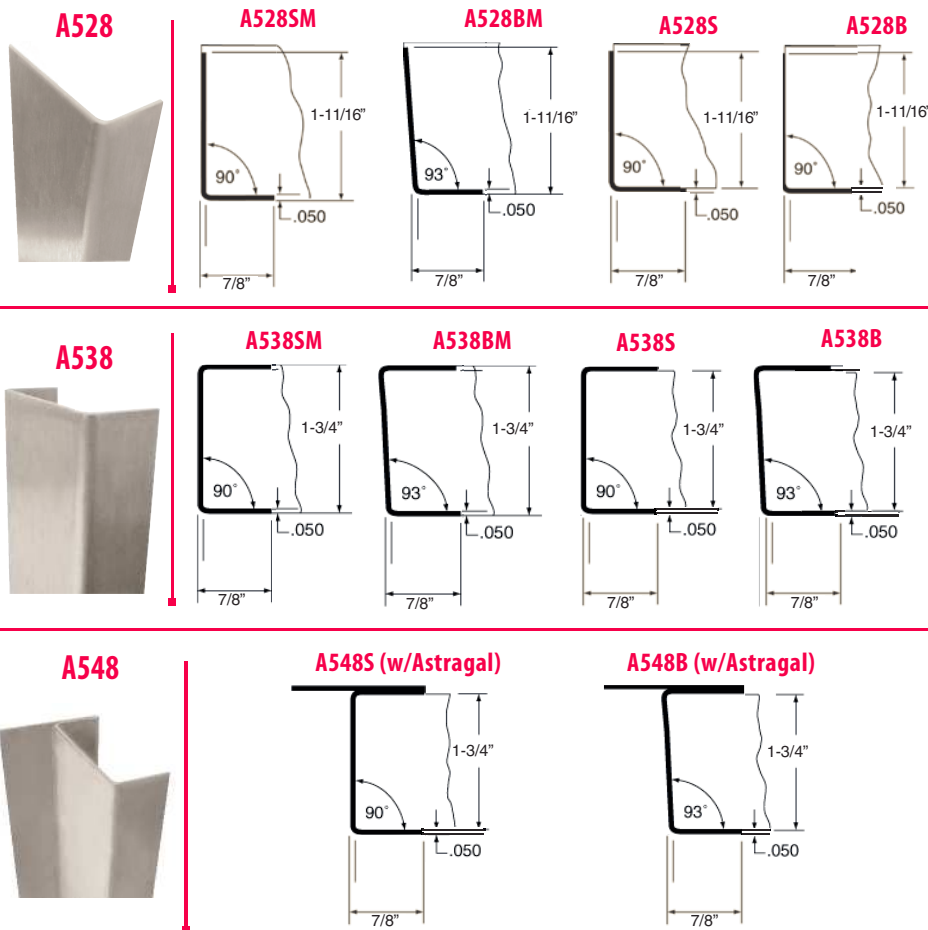
Options

- Standard cut-outs shown below – **Done in-house**
- **Additional cut-outs available – Contact factory or visit www.abhmfg.com for order forms**
- Security screws available
- Custom door thicknesses and leg sizes available – **Contact factory**

Description	ABH*	ASSA Abloy*		Trimco*	Hager*
		Markar*	Rockwood*		
Mortised- 2 Sided- Square Edge	A528SM	-	300	KE31-1	180H
Mortised- 2 Sided- Bevel Edge	A528BM	-	301	KE32-1	180K
Mortised- 3 Sided- Square Edge	A538SM	-	302	KE33-1	180M
Mortised- 3 Sided- Bevel Edge	A538BM	-	302B	KE33-1-93	180P
Mortised- 3 Sided- Radius Edge	A538RM	-	-	KE34-1	180Q
Non-Mortised- 2 Sided- Square Edge	A528S	EG-C-308	304	-	182H
Non-Mortised- 2 Sided- Bevel Edge	A528B	EG-C-308	305	-	182K
Non-Mortised- 3 Sided- Square Edge	A538S	EG-308	306	-	182M
Non-Mortised- 3 Sided- Bevel Edge	A538B	EG-308	306B	-	182P
Non-Mortised- 3 Sided- Radius Edge	A538R	-	307	-	182Q
Overlapping- Non-Mortised- 2 Sided- Square Edge	A528SO	-	308	KE35-1	181H
Overlapping- Non-Mortised- 2 Sided- Bevel Edge	A528BO	-	309	KE36-1	181K
Overlapping- Non-Mortised- 3 Sided- Square Edge	A538SO	-	310	KE37-1	181M
Overlapping- Non-Mortised- 3 Sided- Bevel Edge	A538BO	-	310B	KE37-1-93	181P
Non-Mortised- 3 Sided- Square Edge w/Astragal	A548S	EG-T-308	306-AST	-	-
Non-Mortised- 3 Sided- Bevel Edge w/Astragal	A548B	EG-T-308	306B-AST	-	-

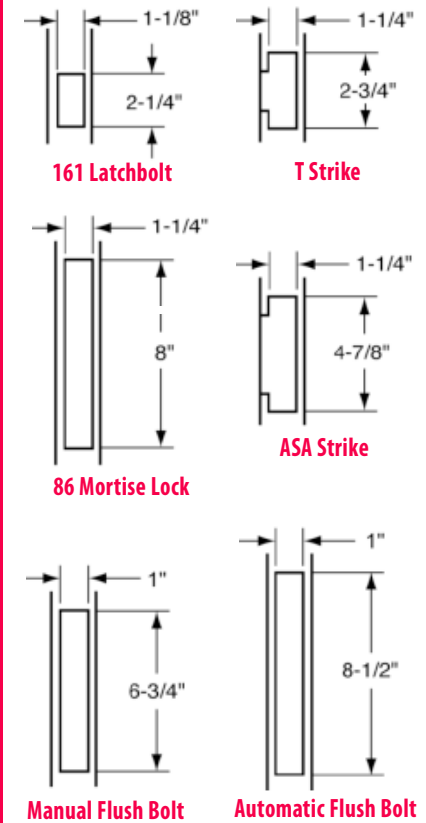
*Brand names are trademarks or registered trademarks of their respective companies.

Δ US3, US4, US10, US10B finishes only available for 44" and smaller.



Standard Cut-Outs

For additional cut-outs – Contact factory



Slide Bolts, Surface Bolts & Flush Bolts



1880 Slide Bolt Padlock Latch

- **Lock-out option** offers the option for adding another padlock (**Suffix "LO"**)
- Ideal for lockers & temporary locking situations
- Non-handed reversible with built-in fail safe
- Stainless steel assembly
- Supplied standard with ASA or T-Strike
- For use with $\frac{3}{8}$ " diameter padlock (not provided)

1884** Slide Bolt - $2\frac{3}{4}$ " backset (161 prep)
1888 Slide Bolt - $2\frac{3}{8}$ " backset (160 prep)



1805 Surface Bolts

- **All stainless steel components**
- N1805 locking bracket (**Suffix "L"**) or double-locking bracket (**Suffix "DL"**)
- **N1805** features $\frac{3}{16}$ " x $\frac{3}{4}$ " bar
- Standard lengths = 8" (**N1815**) or 12" (**N1825**)
- **HD1805** features $\frac{3}{4}$ " x $\frac{3}{4}$ " bar
- Standard lengths = 12" (**HD1825**) or 24" (**HD1835**)
- Custom lengths available – **Contact factory**
- Specify if top (**Suffix "T"**) or bottom strike (**Suffix "B"**) is required

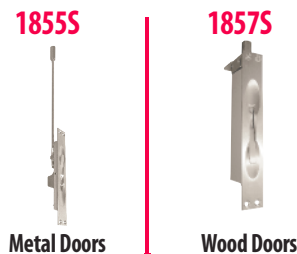


Cross Reference					
ABH*	Rockwood*	Ives*	DCI*	Hager*	Trimco*
N1815**	580	SB453-8	1008F	275D	3922
N1815L**	-	SBO454-8	1008P	-	3922L
N1825	581	SB453-12	1012F	276D	3923
N1825L	-	SBO454-12	1012P	-	-
HD1825	-	SB360	-	-	-
HD1835	-	-	-	-	-

*Brand names are trademarks or registered trademarks of their respective companies.
These Models available on the **TARGET 1 QUICK SHIP program at no additional cost.

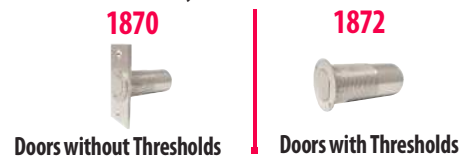
Manual Flush Bolts

- Used to lock and unlock the inactive door when the active door is open
- When the inactive door is closed, moving the lock lever up locks and moving it down unlocks it
- $\frac{5}{8}$ " throw with $\frac{7}{8}$ " vertical adjustment
- UL Listed



Dust Proof Strikes

- Prevents dirt, dust & debris from clogging floor strikes
- Can be used with any ABH® flush bolt



Automatic Flush Bolts

- When active door is closed the bolt automatically projects to lock inactive door
- Bolt automatically retracts when active door is opened
- $\frac{3}{4}$ " throw with 2" vertical alignment (1860P) and $\frac{3}{4}$ " vertical alignment (1862P)
- UL Listed



Cross Reference					
ABH*	Rockwood*	Ives*	DCI*	Hager*	Trimco*
1855S	555	FB458	780	282D	3917
1857S	557	FB358	790	283D	3913
1860P**	1842	FB31P	842	292D	3810
1862P**	1942	FB41P	942	291D	3815
1870	570	DP2	82	280X	3910
1872	-	DP1	81	-	3910N

*Brand names are trademarks or registered trademarks of their respective companies.
These Models available on the **TARGET 1 QUICK SHIP program at no additional cost.

Innovation, Quality, Customer Service . . . **ABH** Makes Life Simple

Tel (630) 875-9900 • Fax (800) 932-9224 • www.abhmfg.com • abhinfo@abhmfg.com



Standard Features

- Easily adjustable roller ensures proper contact between door and frame
- Stainless steel base material standard
- Available in most standard BHMA finishes – **Done in-house**
- Meets ANSI/BHMA Standard A156.16 E19091
- **TARGET 1 QUICK SHIP – US32D****

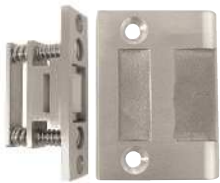
Options

- Custom strikes available (1890S) – **Contact factory**

Cross Reference					
ABH*	Rockwood*	Ives*	DCI*	Hager*	Trimco*
1890**	590	RL30	4030	1442	1559A
1890S	590DA	-	-	-	-
1891	591	RL30A	-	1443	1559C
1892	592	-	-	318D	1559B
1893	593	RL1152	4040	318S	1559BL
1894	-	-	-	-	-
1895	594	RL32	-	320R	1554B
1896	-	RL32A	-	-	1554C
1897	-	-	-	-	1554A
1898	-	-	-	-	-

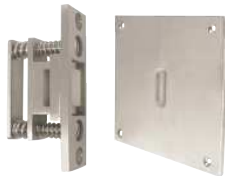
*Brand names are trademarks or registered trademarks of their respective companies.
 These Models available on the **TARGET 1 QUICK SHIP program at no additional cost.

1890**



Cast Strike = $1\frac{11}{16}$ " x $2\frac{1}{4}$ "
 Roller latch face = 1 " x $3\frac{3}{8}$ "
 Maximum roller projection = $\frac{5}{16}$ "

1890S



Custom Strike = Contact factory
 Roller latch face = 1 " x $3\frac{3}{8}$ "
 Maximum roller projection = $\frac{5}{16}$ "

1891



ASA Strike = $1\frac{3}{8}$ " (lip to center) x $4\frac{7}{8}$ "
 Roller latch face = 1 " x $3\frac{3}{8}$ "
 Maximum roller projection = $\frac{5}{16}$ "

1892



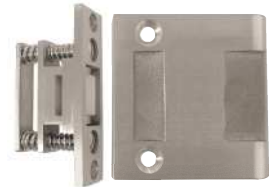
T Strike = $1\frac{3}{8}$ " (lip to center) x $2\frac{3}{4}$ "
 Roller latch face = 1 " x $3\frac{3}{8}$ "
 Maximum roller projection = $\frac{5}{16}$ "

1893



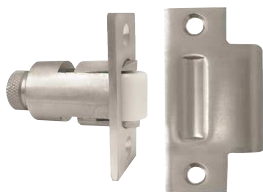
Cast Strike = $1\frac{1}{8}$ " x $2\frac{1}{4}$ "
 Roller latch face = $1\frac{1}{2}$ " x $4\frac{1}{2}$ "
 (with integrated angle stop)
 Maximum roller projection = $\frac{5}{16}$ "

1894



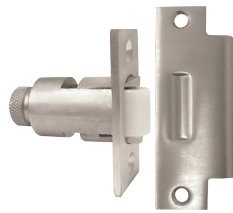
Extended Cast Strike = $2\frac{1}{8}$ " x $2\frac{1}{4}$ "
 Roller latch face = 1 " x $3\frac{3}{8}$ "
 Maximum roller projection = $\frac{5}{16}$ "

1895



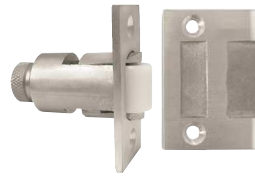
T Strike = $1\frac{3}{8}$ " (lip to center) x $2\frac{3}{4}$ "
 Roller latch face = $1\frac{1}{8}$ " x $2\frac{1}{4}$ "
 Maximum roller projection = $\frac{1}{2}$ "

1896



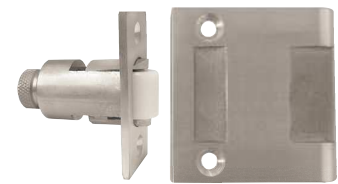
ASA Strike = $1\frac{3}{8}$ " (lip to center) x $4\frac{7}{8}$ "
 Roller latch face = $1\frac{1}{8}$ " x $2\frac{1}{4}$ "
 Maximum roller projection = $\frac{1}{2}$ "

1897



Cast Strike = $1\frac{11}{16}$ " x $2\frac{1}{4}$ "
 Roller latch face = $1\frac{1}{8}$ " x $2\frac{1}{4}$ "
 Maximum roller projection = $\frac{1}{2}$ "

1898



Extended Cast Strike = $2\frac{1}{8}$ " x $2\frac{1}{4}$ "
 Roller latch face = $1\frac{1}{8}$ " x $2\frac{1}{4}$ "
 Maximum roller projection = $\frac{1}{2}$ "



A:B:H[®]

A:B:H[®]

Innovation, Quality, Customer Service . . . *Makes Life Simple*



Tel (630) 875-9900 • Fax (800) 932-9224 • www.abhmfg.com • abhinfo@abhmfg.com