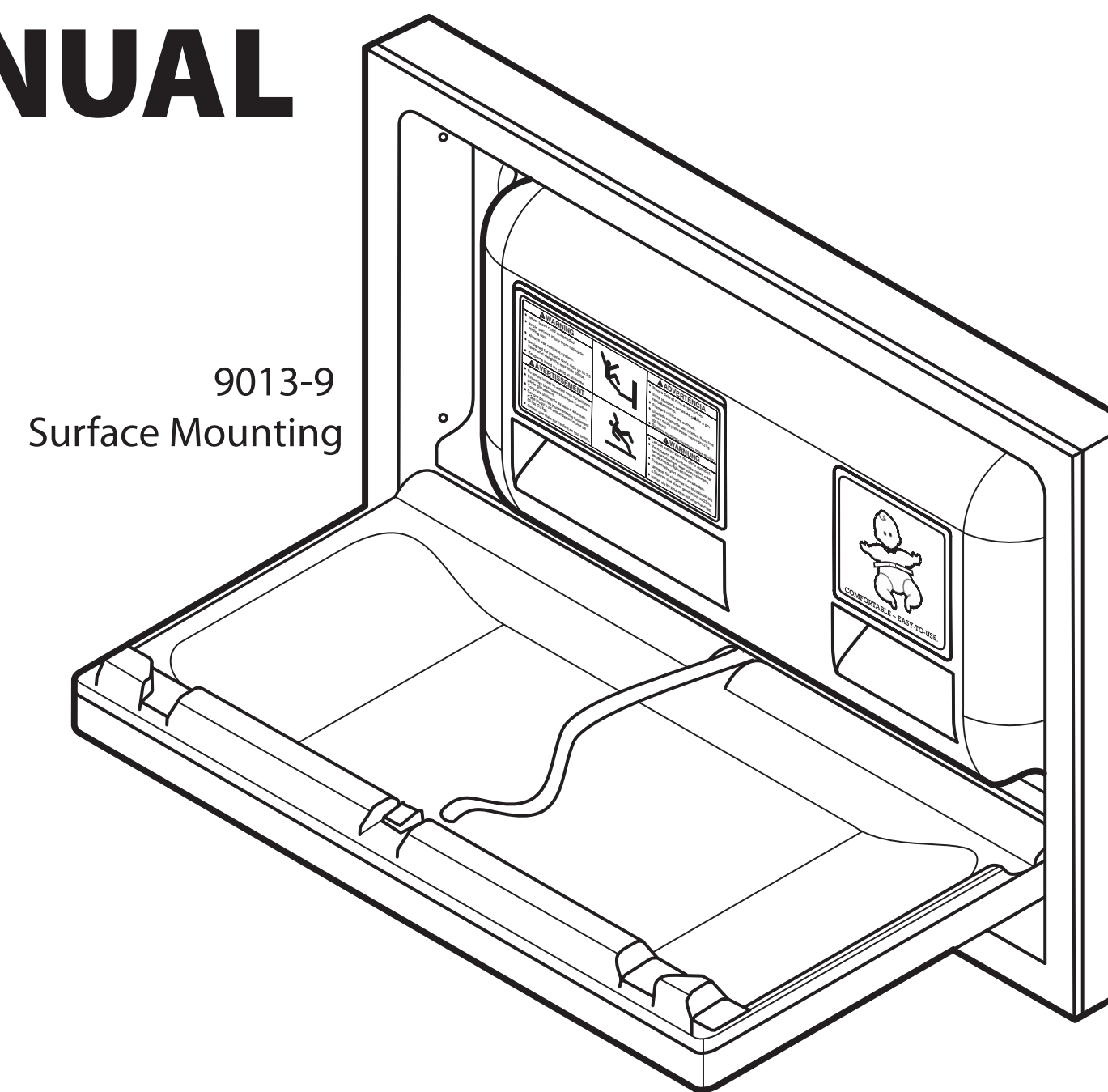
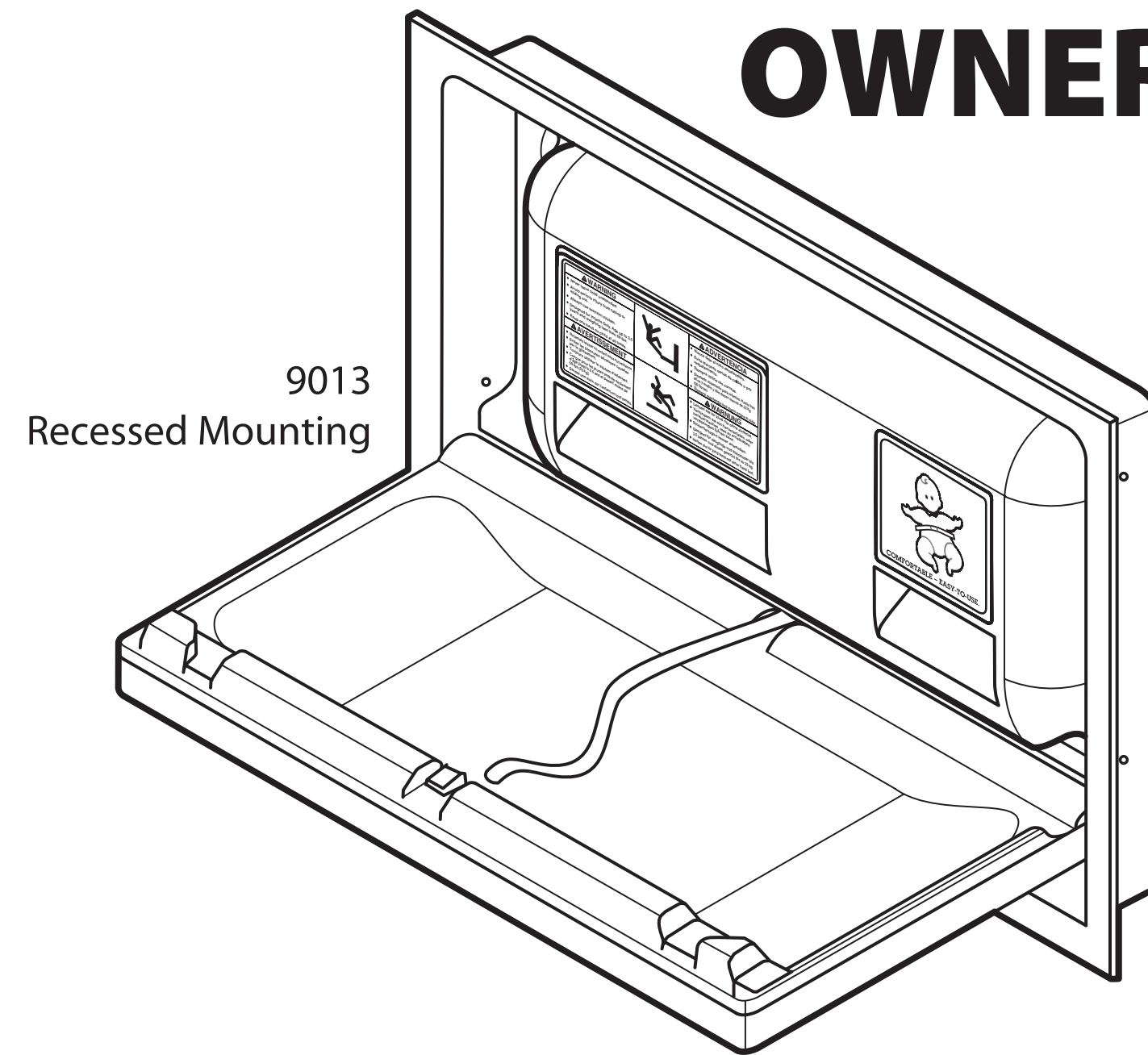


BABY CHANGING STATION

Installation, Maintenance and Operation

OWNER'S MANUAL

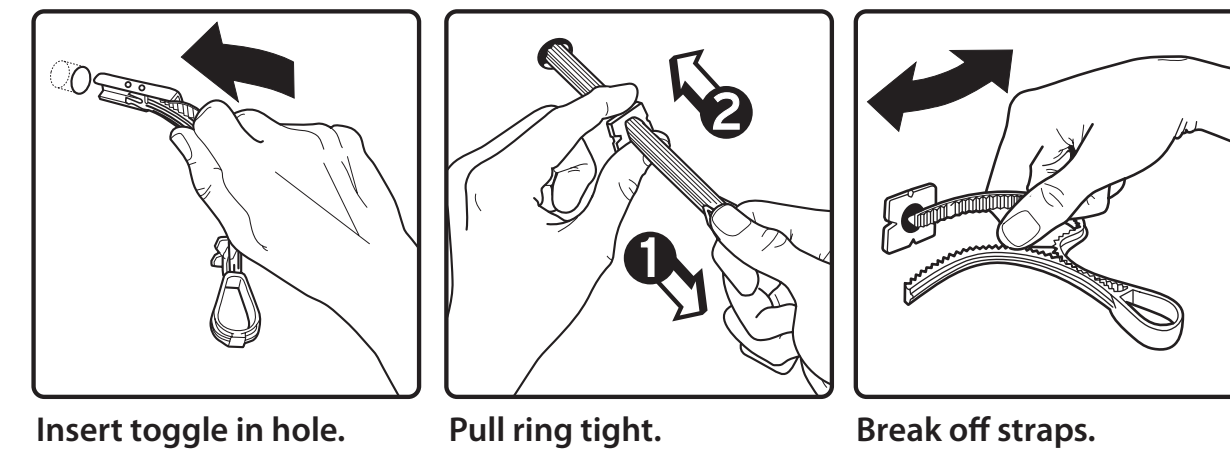
ASI AMERICAN SPECIALTIES, INC.
441 Saw Mill River Road, Yonkers, NY 10701 (914) 476-9000
www.americanspecialties.com



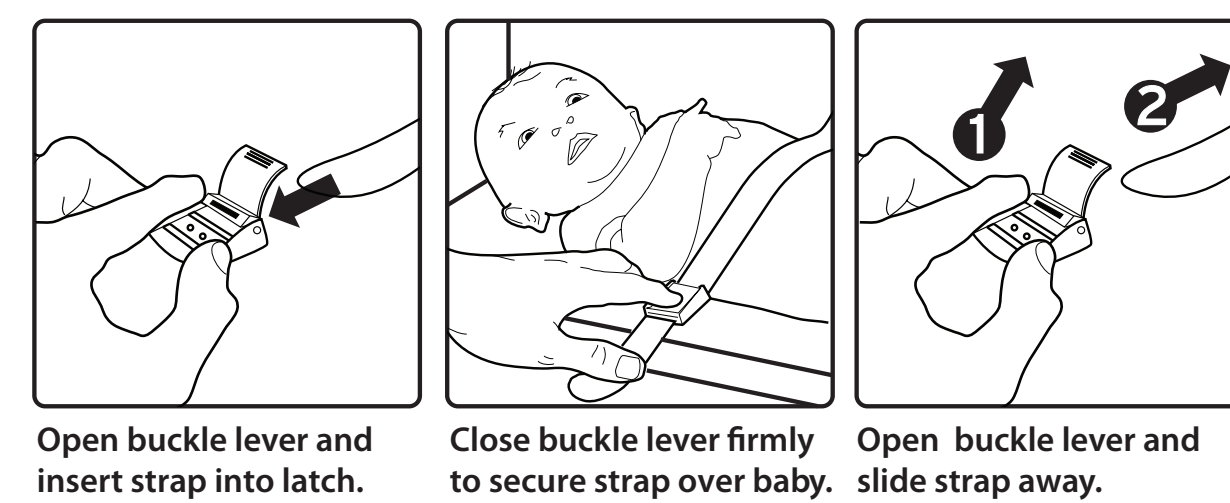
13" (330)

34 1/4" - 36 1/4" (870 - 921)
TO FLOOR

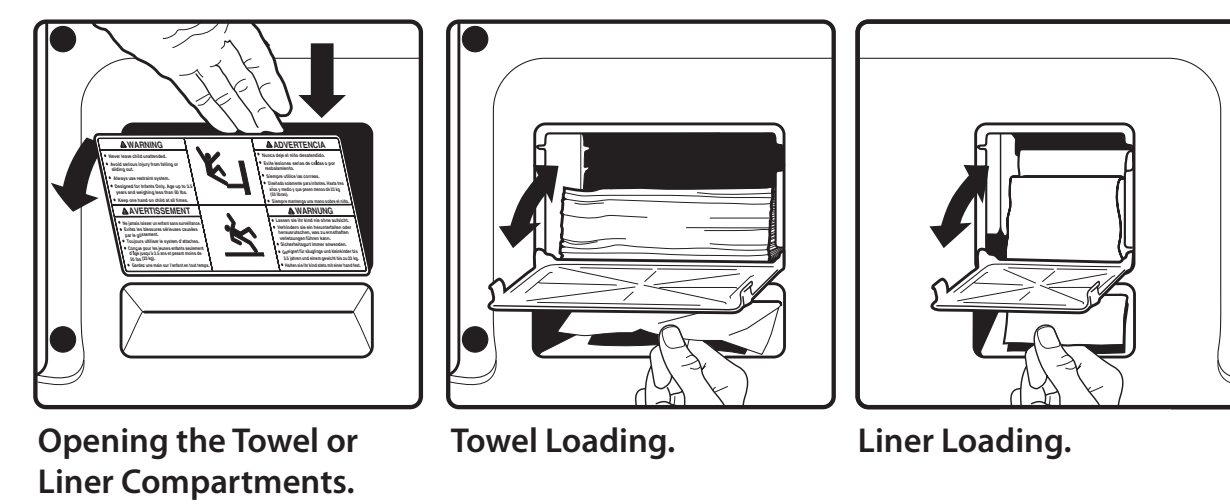
TOGGLE ANCHOR INSTALLATION



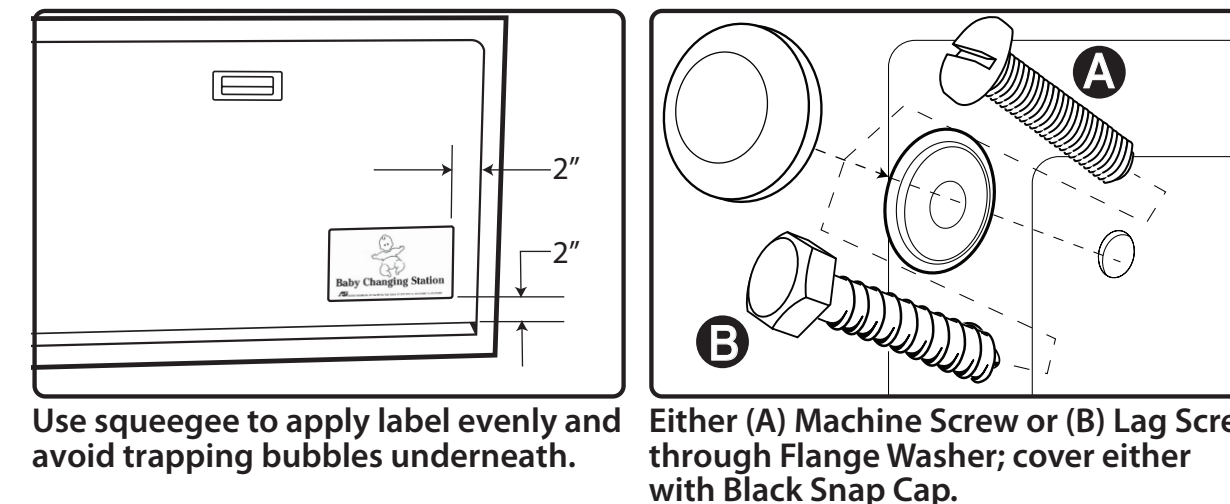
CHILD PROTECTION SAFETY STRAP



TOWEL & LINER DISPENSERS LOADING



LABEL & SCREW COVER INSTALLATION



INSTALLATION

General

- A qualified installer should install the Baby Changing Station. The Baby Changing Station can support a load of more than 500 lbs (227kg), however it is intended for use with a child of no more than 50 lbs (23kg) and age up to 3.5 years.
- Appropriate wall mounting is critical to the safe use of this product. If stability of mounting or wall structure is in doubt, consult the manufacturer.
- The unit weight alone is 91 lbs (41.3 kg).
- The wall and attachment method should be sturdy enough to support more than the maximum combined load of unit weight and user-applied weight. Ensure that the installer utilizes adequate screws and wall anchors (dowels) to suit wall conditions for wall mounted changing units.
- This product complies with ANSI Z535.1, Z535.3, Z535.4, ASTM F-2285-04 and BS EN 12221-1:2000 & BS EN 12221-2:2000.
- Read this complete Owner's Manual before beginning installation.

The manufacturer and distributors of this Baby Changing Station will not be liable in any way or responsible in any manner for units that have been improperly installed.

Prior to installation

- Inspect the carton for visible damage and report any product damage immediately
- Verify that all items are included.

Carton Contents

- 1 Baby Changing Station, protective plastic bag wrapped and film covered
- 1 Owner's Manual
- 1 Product Data Sheet
- 1 Installation Diagram sheet
- 1 Exterior Product Identification Label, self-adhesive application
- 1 Hardware bag, containing the following:
 - Ø3/8" (M10) Cup Washers, Qty. 4
 - Ø3/8" (M10) Black Washer Cover, Qty. 4
 - Ø3/8" x 2" (M10 x 50mm) Hex Head Lag Screw, Qty. 4
 - Nº10 x 1-1/2" (M5 x 38mm) Pan Head Self-Tapping Screw, Qty. 4
 - Ø3/8"-16 x 1-1/2" (M9.5 x 38mm, ref) Slotted Pan Head Screw, Qty. 4
 - Ø3/8"-16 Toggle® Toggle Anchors, Qty. 4
 - Ø1/4" (M6.4) Black Hole Plug, Qty. 4
 - Ø7/16" (M11) Black Hole Plug, Qty. 4

- Locate the Baby Changing Station in an area where it will not obstruct walkways or doors. Allow sufficient space in front of the unit to provide appropriate access for all approaches.
- For compliance with ADA Accessibility Guidelines, install unit so that top edge of changing table is 32" to 32-3/8" (813 mm to 822 mm) above finished floor (AFF).
- For a table height of 32-34 inches AFF (813-864 mm) the lower mounts should be between 34-1/4" and 36-1/4" (870-921 mm) AFF.
- See installation instruction diagram sheet packed with unit.

For 9013, 9013-W: Recessed Mounting

Provide rough wall opening (RWO) 34-1/4" W x 22-3/4" H x 3-3/4" minimum depth (870 mm x 578 mm x 95 mm). Provide adequate in-wall blocking to prepare to mount unit in wall opening using either four (4) Nº10 x 1-1/2" long (M5 x 38 mm) self-tapping screws through side holes or four (4) Ø3/8" x 2" (Ø10 x 50 mm) lag screws (or other fasteners appropriate for wall conditions) through mounting holes in rear wall of cabinet.

For 9013-9: Surface Mounting

Use this sheet as a template to mark the four (4) mounting points. Provide adequate in-wall blocking to prepare to mount unit on wall using four (4) Ø3/8" x 2" (Ø10 x 50 mm) lag screws (or other fasteners appropriate for wall conditions) through mounting holes in rear wall of cabinet. Use a level to ensure that the mounting is horizontal.

Recessed Mounting In Hollow Walls With Framed RWO (9013, 9013-W)

Important: Unit mounting must be adequately reinforced to carry rated load. All mounting screws should fully penetrate RWO framing and blocking.

For Wood Framing

- Use Ø3/8" x 2" (Ø10 x 50 mm) hex head lag screws with Ø3/8" cup washers through rear wall into adequate blocking at rear wall mounting points (4).
- Alternatively, use Nº10 x 1-1/2" (M5 x 38 mm) pan head self-tapping screws into side framing.
- Shim to level and tighten all screws.

For Metal Framing

- Drill Ø3/4" (Ø19 mm) hole into hollow wall metal blocking at four (4) rear wall mounting points.
- Install Toggle® BC anchors (provided) into wall at rear wall mounting points.
- Provide welded, wired, riveted, or screwed metal shims to level unit.
- Use Ø3/8-16 x 1-1/2" pan head screws (supplied) with Ø3/8" cup washer into Toggle BC anchors (supplied, installed first) and tighten securely.
- Alternatively, use Nº10 x 1-1/2" (M5 x 38 mm) pan head self-tapping screws into side framing.
- Shim to level and tighten all screws.

Surface Mounting on Hollow Walls (9013-9 Only)

IMPORTANT: Unit mounting must be adequately reinforced to carry rated load. Adequate blocking must be provided in wall to support and retain the fastener system used to allow the Baby Changer unit to hold the rated load. Use this sheet template to mark the four (4) rear wall mounting points. For a table height of 32-34 inches AFF (813-864 mm) lower mounts should be between 34-1/4" to 36-1/4" (870-921 mm) AFF. Use a level to ensure that the mounting is horizontal.

For Wood Stud Framing Dry Wall

- Drill Ø3/16" (Ø4.8 mm) pilot holes into the wood at the four mounting points. If only two holes fall on a stud, drill two Ø3/4" (Ø19 mm) holes into the hollow wall at the non-stud side and install the toggle anchors (Toggle® BC, supplied) as described in the illustrated guide.
- Install the unit with the Ø3/8 x 2" hex head lag screws (or Ø3/8-16 x 1-1/2" pan head machine screws with toggle anchors, supplied) and cup washers provided.
- Do not tighten yet.**
- After unit is hung on four mounting bolts and stabilized, use a level to make sure unit is square horizontal and plumb and then tighten the four bolts securely.

For Metal Stud Framing Dry Wall

- Drill Ø3/4" (Ø19 mm) holes at the four mounting points. Make sure at least two holes on the same side penetrate a metal stud.
- Install the toggle anchors (Toggle® BC, supplied) as described in the illustrated guide.
- Install the unit with Ø3/8-16 x 1-1/2" pan head machine screws (supplied) and cup washers provided.
- Do not tighten yet.**
- After unit is hung on four mounting bolts and stabilized, use a level to make sure unit is square horizontal and plumb and then tighten the four bolts securely.

For Ceramic Tile Face Hollow Walls

- When mounting the unit over ceramic tile you will need to drill clearance holes through the tile only, with a masonry bit. Use a large enough bit to provide clearance for lag screws or for toggle anchors.
- Drill clearance holes through the TILE ONLY as follows:
 - With wood stud framing and Ø3/8 x 2" (Ø10 x 50 mm) lag screws, drill Ø7/16" or Ø1/2" (Ø11 mm or Ø13 mm) with a masonry bit.
 - Proceed as above for wood stud framing dry walls.
 - With metal stud framing and Ø3/8 x 1-1/2" machine screws - toggle anchors, drill Ø3/4" (Ø19 mm) holes at the four (4) mounting points with a masonry bit.
 - Proceed as above for metal stud framing dry walls.

Mounting on Masonry Wall - Only 9013-9

- Installation on a masonry wall requires four (4) Ø3/8" x 1" (Ø10 mm x 25 mm) expansion anchors and four (4) Ø3/8" x 1-1/2" (Ø10 mm x 38 mm) lag bolts or other mounting system compliant with local building codes and suitable for wall conditions and load (all not supplied).
- Drill the correct diameter holes (usually indicated on the expansion anchor) 1-3/8" (35 mm) deep minimum if using anchors as above at the four (4) mounting points.
 - Insert the four (4) expansion anchors and tap flush to the wall with a hammer.
 - Install the unit with four (4) lag bolts and the cup washers provided.
 - Do not tighten yet.**
 - After unit is hung on mounting bolts and stabilized, use a level to make sure unit is square horizontal and plumb and then tighten the four (4) lag bolts securely with a socket wrench.

Testing and Final Assembly

- Open and close the unit several times to check for smooth operation.
- Place a weight of approximately 180 lbs (82 kg) on the bed table and check that unit remains securely fastened and that there is no movement away from the wall, and that the unit remains square and level horizontally both parallel and perpendicular to wall.
- Install the four (4) black snap washer covers over the mounting bolts or screws and cup washers on the rear wall using firm pressure if rear mounting was used.
- Install black hole plugs in unused mounting holes as follows:
 - Ø7/16" (M11) Black Hole Plug, Qty. 4, in rear mounting holes if recess mounted using side holes only
 - Ø1/4" (M6.4) Black Hole Plug, Qty. 4, in side mounting holes if surface mounted using rear holes only
- Remove all the protective plastic film from outside surfaces. Clean any remaining adhesive residue. Refer to Product Care & Maintenance bulletin (PCM.pdf) available on the web site.
- If the installation instructions have been followed correctly the Baby Changing Station is now safe and ready for use.
- Plastic bags are not play toys. To avoid the DANGER OF SUFFOCATION remove the plastic bag cover before putting the unit in service. The bag should be disposed of properly and kept away from children.

MAINTENANCE

General

- Ensure that the towel and liner compartments are always adequately stocked. Liners are essential to provide a comfortable barrier between the baby and the bed of the unit, and to help protect against the spread of infection.
- Thoroughly clean the unit daily either with warm water and mild anti-bacterial detergent dampened cleaning cloths, followed by a rinse with clean water dampened clean cloth and dry, or with commercial spray disinfectant cleaning products and clean soft cloths. DO NOT SOAK OR HOSE DOWN UNIT. Do not use any abrasive cleaning agents. Refer to Product Care & Maintenance bulletin (PCM.pdf) available on the web site.
- Periodically inspect the unit to ensure that it remains securely attached to the wall, and that the integrity of the unit and the wall mounting has not been affected by vandalism or abnormal wear.
- Regularly check the safety belt to ensure safe operation. Make sure the screw mountings remain tight. Make sure the cam latch securely locks the strap when clamped.

Opening the Towel or Liner Compartments

The compartment door is hinged at the bottom and retained by concealed catches at the top corners

- Apply downward pressure with fingertips to top edge of door.
- While maintaining pressure, smartly pull door top towards yourself to slightly bow the top edge of door.
- As the cover flexes, the catches will release and the cover will pivot forward.

Towel Loading

Multi-fold towels conforming to CID A-A-696A, Type II, Size 2, having folded size 9-1/4 x 2-5/8 ± 1/8 D (23.5 ± 1.3 mm W x 5.7 ± 0.3 mm D) will fit in the towel dispenser compartment.

- Open a standard (200 count) towel pack by removing the paper band wrap.
- Load compartment with towel leading edge on stack bottom facing towards the user.
- Grasp leading edge of towel with thumb and index finger through dispenser slot on bottom of compartment and pull first fold to verify proper feeding.
- Snap closed compartment door.

Liner Loading

Quilted and waxed liners conforming to the maximum folded dimensions of 6-1/8" W x 10" D (155 mm W x 254 mm D) to provide an unfolded liner measuring 15" x 30" (381 mm x 762 mm) will fit in the liner dispenser compartment.

- Open a standard (100 count) liner package and remove approximately 50 liners
- Load compartment with the folded liners tilted up and angled against the rear wall so the short dimension of the folded liner is presented above the dispenser slot.
- Grasp leading edge of folded liner with thumb and index finger through dispenser slot on bottom of compartment and pull single folded liner to verify proper feeding.
- Snap closed compartment door.

OPERATION

Use of Bag Hooks

Hanging personal belongings (e.g. baby supplies, bags, backpacks, shopping bags) adds to the weight carried by the baby table. The unit can support a load weighing in excess of 500 lbs (227 kg). Good practice, however, dictates prudence. A good guideline is to not hang more than 150 lbs (68 kg) total weight on the bag hooks. **WARNING!** Excessive weight beyond this limit may cause a hazardous unstable condition to exist. Parcels or accessory items, or both, placed on the baby changing table may cause the unit to become unstable.

Use of Table Edge for User Support

Transfer of partial adult weight (e.g. leaning on, slouching against, fall & grab) contributes to load carried by the Baby Table. The unit can support in excess of 500 lbs (227 kg). Good practice, however, dictates prudence. A good guideline is to not add more than 260 lbs (118 kg) total weight to front edge of table. **WARNING!** Excessive weight beyond this limit may cause a hazardous unstable condition to exist. Parcels or accessory items, or both, placed on the baby changing table may cause the unit to become unstable.

Use of Child Protection Safety Strap

WARNING! Avoid serious injury from falling or sliding out. Always use restraint system. Never leave the child unattended. Secure child in place with the child protection safety strap by sliding the safety strap into the cam buckle until it is snug on child. Tighten or loosen the strap by pulling the strap end through and clamping the buckle. To unbuckle the strap simply lift the buckle lever and pull the strap out.

General Warnings and Cautions

WARNING! Do not leave the child unattended.
CAUTION: Be aware of the risk of open fire and other sources of strong heat, such as electric heaters or gas heaters (bar fires) or heat lamps, etc., in the near vicinity of the changing unit.

* 9013-9 **ONLY MUST** use these holes; 9013 should also use these holes but may use the side holes provided as an alternate. See the INSTALLATION section for full details.

ALL DIMENSIONS INCH (mm)

32" (813)