

TABLE OF CONTENTS

How to Order Closers	1	Parts and Components	5
Available Finishes.....	1	OHC Series Concealed	6
Common Applications.....	2	8200 Series Auto Operator	7
SC Series Options.....	3	Warranty	8
SC Series Surface Mount	4		

HOW TO ORDER SC SERIES CLOSERS, COMPONENTS, & ACCESSORIES

1. The SC60, SC70 & SC80 Series Closers are each certified to meet the requirements of ANSI Standard A156.4, Grade 1. The SC90 Series Closers are certified to meet the requirements of ANSI Standard A156.4, Grade 3.
2. All SC Series Closers are available in AL (689) and DKBRZ (695). BRASS(696) may be available but with longer leadtime. Consult factory for details.
3. SC80 Series Closers are shipped with a standard 'slim cover' unless an optional 'full cover' is specified. SC60 Series Closers are shipped 'less cover' unless an optional 'slim cover' is specified (SC60 & SC61 only). SC90 Series Closers are shipped 'less cover' unless an optional 'slim cover' is specified.
4. All SC Series Closers are furnished with a TBWMS fastener pack.
5. All SC60 and SC80 Series Closers are packed with six (6) identical closers per master carton. SC70 Series Closers are packed with four (4) identical closers per master carton.

HOW TO ORDER THE OHC100 SERIES CLOSERS, COMPONENTS & ACCESSORIES

1. OHC100 Series Closers are available with cylinders that allow either a 90° or 105° of door swing. Please specify at time of order.
2. The OHC100 Series Closer is UL listed.
3. The OHC101 Series Closer is ADA compliant. The OHC100 is not ADA compliant.
4. An OHC100 Series cylinder body will always be DKBRZ.
5. The OHC100 Series would be a retrofit for the following models; Norton 4900, Jackson 20-330, Global TC7000, International 100 or 200 and the Kawneer Husky II.
6. The OHC100 Series 'A' Style arm is an 'end load' arm, the 'S' Style arm is a 'side load' arm and 'VO' Style is used on doors hung with offset pivots or butt hinges.

FALCON Customer Care & Technical Support
Phone (877) 671-7011 or Fax (800) 288-4242

STANDARD FINISHES

AL (BHMA 689)
 Aluminum

DKBRZ (BHMA 695)
 Dark Bronze

OPTIONAL FINISH

BRASS (BHMA 696)
 (Extra Lead Time - Consult Factory)

IRFASTTRACK Customers, please refer to **IRFASTTRACK** Price Book for 24-hour/5-day product availability. Please fax orders to 800-288-4242.

Prices subject to change without notice

COMMON APPLICATIONS

	Series	Duty	Applications
	SC70 Series	Heavy	Commercial / Exterior Door Commercial / Interior Door Aluminum Store Front
	SC80 Series	Medium	Commercial / Exterior Door Commercial / Interior Door Aluminum Store Front
	SC60 Series	Light-Medium	Commercial / Exterior Door Commercial / Interior Door Aluminum Store Front
	SC90 Series	Light	Commercial / Interior Door Aluminum Store Front
	OHC100 Series	Medium	Aluminum Store Front Retail

Prices subject to change without notice

SC Closer Configuration

To meet your unique requirements, SC closers can be configured by selecting specific options. To verify availability of options please contact customer service.

Cylinder Options

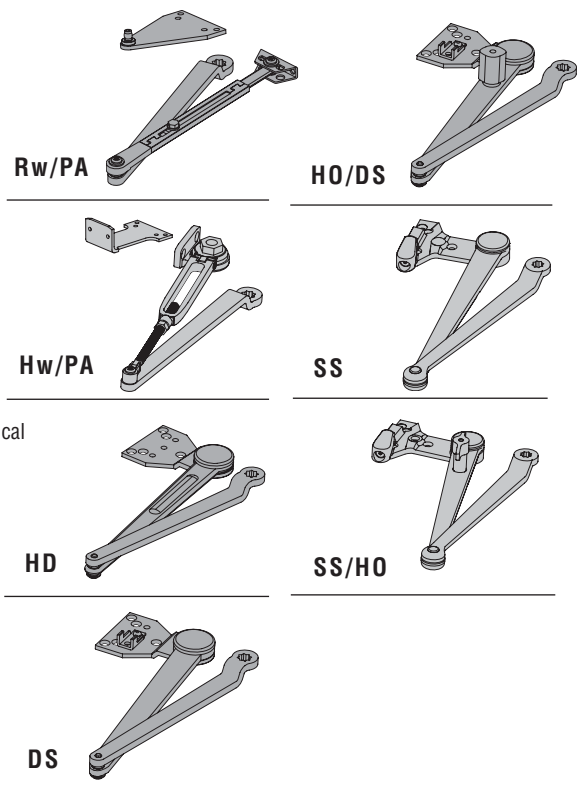
- **STD** (standard cylinder) - Standard cylinder provides a main speed function to control the motion of the door from maximum opening angle until the door is a few inches from the latch where function controls the final closing motion. The opening swing is controlled by the hydraulic backcheck function from about 70° to maximum opening angle.
- **DEL** (delayed action cylinder) - Special cylinder provides a separate delayed closing motion from maximum opening angle to approximately 70°. Then the main speed function controls the door motion until the door is a few inches from the latch where latch function controls the final closing motion. During the opening swing, the door is controlled by the hydraulic backcheck function from about 70° to maximum opening angle.

Cover Options

- **FULL** - Cover encloses the closer body and the unused pinion shaft.
- **SLIM** - Cover encloses the closer body with a cap on the unused pinion shaft.

Arm Options

- **Rw/PA** (regular arm with parallel arm bracket) - Nonhold-open arm with adjustable forearm assembly to accommodate a range of door and frame reveal conditions. Includes PA bracket to allow installation in a parallel arm configuration.
- **Hw/PA** (hold open arm with parallel arm bracket) - Hold-open arm with adjustable forearm assembly to accommodate a range of door and frame reveal conditions.
- **HD** (heavy duty arm) - Heavy-duty, parallel arm for use in high-traffic applications.
- **DS** (dead stop arm) - Heavy-duty, parallel arm includes a positive mechanical stop and nonadjustable forearm assembly for high volume traffic or potentially abusive installation conditions.
- **DS/HO** (dead stop hold open arm) - Heavy-duty, parallel arm includes a positive mechanical stop and nonadjustable forearm assembly for high volume traffic or potentially abusive installation conditions. Also includes a manually selective hold-open function.
- **SS** (Spring N' Stop) – Extra heavy-duty, forged constructed parallel arm includes an integral spring stop and non-adjustable forearm assembly for high volume traffic or potentially abusive installation conditions.
- **SS/HO** (Spring N' Stop Hold-Open) – Extra heavy-duty, forged constructed parallel arm includes an integral spring stop and non-adjustable forearm assembly for high volume traffic or potentially abusive installation conditions. Also includes a manually selectively hold-open function.



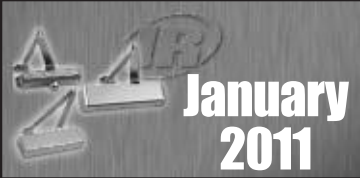
Fastener Pack

- **TBWMS** (thru bolts with wood machine screws) - Fasteners for installation on wood, hollow metal or aluminum storefront-type doors. Thru bolts for installations on 1-3/4" thick, hollow core doors are included.

ADA Accessibility Requirements

- Closers are preset at the factory or can be configured by the installer to generate less than a 5lb opening force on a 36" wide interior door to comply with the requirements of the ADA law, Sections 4.13.10 and 4.13.11, and ANSI Standard A117.1, Sections 4.13.10 and 4.13.11.
- Closers with the optional delayed closing cylinder also comply with the additional advisory suggestions of the ADA law, Section A4.13.10, and ANSI Standard A117.1, Section A4.1310.

SC SERIES CLOSERS
PRICE LIST

CLOSER SERIES NUMBER		STANDARD FINISHES AL (689) DKBRZ (695)	S H E I P I N G	
SERIES NUMBER	ARM TYPE			

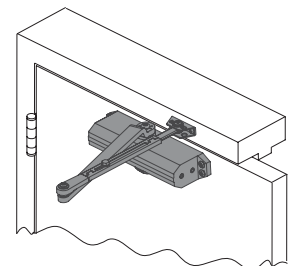
ALL PRICES IN U.S. DOLLARS

COMPLETE CLOSERS

SC60 Series

SC61	Rw/PA	\$190
SC61	Hw/PA	215
SC61	HD/PA	215
SC61	DS	235
SC61	DS/HO	260
SC61	SS	305
SC61	SS/HO	339

Add for; Slim Cover (**SLIM**) (\$15), Delayed Action (**DEL**) (\$22).
BRASS (696) finish may be available at an extended lead time (consult factory).
IR FastTrack items are available in AL (689) finish only.

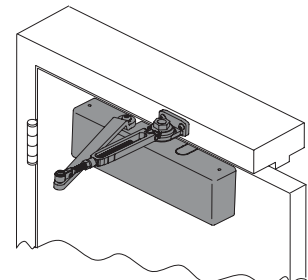


SC60 Series

SC70 Series

SC71	Rw/PA	\$331
SC71	Hw/PA	356
SC71	HD/PA	356
SC71	DS	376
SC71	DS/HO	401
SC71	SS	446
SC71	SS/HO	480

Full Cover is Standard.
Add for; Delay Action (**DEL**) (\$22).
BRASS (696) finish may be available at an extended lead time (consult factory).
IR FastTrack items are available in AL (689) finish only.

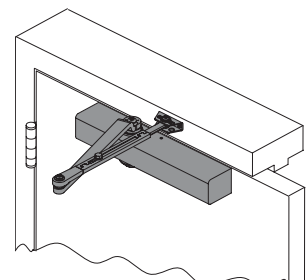


SC70 Series

SC80 Series

SC81	Rw/PA	\$263
SC81	Hw/PA	288
SC81	HD/PA	288
SC81	DS	308
SC81	DS/HO	333
SC81	SS	378
SC81	SS/HO	412

SC80 Series Closers ship with 'slim' cover unless 'full' cover is specified.
Add for; Full Cover (**FC**) (\$5), Delayed Action (**DEL**) (\$22)
BRASS (696) finish may be available at an extended lead time (consult factory).
IR FastTrack items are available in AL (689) finish only.

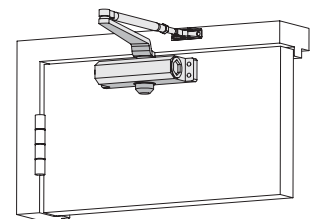


SC80 Series
(w/ full cover shown)

SC90 Series

SC91, SC93, or SC94	Rw/PA	\$135
SC91 or SC94	Hw/PA	160

Add for; Standard Cover (**STD**) (\$10) (N/A on SC91)
BRASS (696) finish may be available at an extended lead time (consult factory).




SC90 Series
(SC91 shown)



FT - Also available through IR FASTTRACK.
Prices subject to change without notice

Parts and Components
PRICE LIST

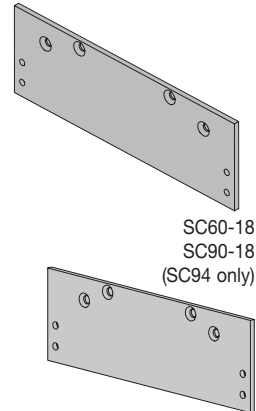
CLOSER SERIES NUMBER		STANDARD FINISHES AL (689) DKBRZ (695)	S H E E P I N G	
SERIES NUMBER	ARM TYPE			
ALL PRICES IN U.S. DOLLARS				

PARTS & COMPONENTS

SC60 Series

SC61-3071	Cylinder
SC61-3071DEL	Delay Cylinder
SC60-72	Slim Cover
SC60-3077/PA	Regular Arm w/PA Bracket
SC60-3049/PA	HO Arm w/PA Bracket
SC60-3077HD	Heavy Duty Parallel Arm
SC60-3077DS	Dead Stop Parallel Arm
SC60-3049DS	HO Dead Stop Parallel Arm
SC60-3077SS	Spring 'N Stop Arm
SC60-3049SS	Spring 'N Stop Hold-Open Arm
SC60-18	Mounting Plate - Top Jamb
SC60-18PA	Mounting Plate - Push Side
SC60-30	Cush Shoe Support
SC60-61	Blade Stop Spacer
SC60-62A	Offset Auxiliary Shoe

\$120	9
142	9
15	1
70	3
95	3
95	3
115	5
140	5
185	5
219	5
27	2
27	2
18	1
20	1
15	1



SC60-18
SC90-18
(SC94 only)

SC60-18PA
SC90-18PA
(SC94 only)

SC60-18
SC70-18

SC70-18PA

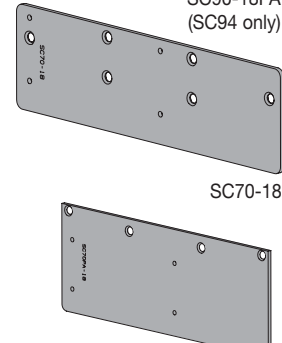
SC80-18

SC80-18PA

SC70 Series

SC71-3071	Cylinder
SC71-3071DEL	Delay Cylinder
SC70-72	Full Cover
SC70-3077/PA	Regular Arm w/PA Bracket
SC70-3049/PA	HO Arm w/PA Bracket
SC70-3077HD	Heavy Duty Parallel Arm
SC70-3077DS	Dead Stop Parallel Arm
SC70-3049DS	HO Dead Stop Parallel Arm
SC70-3077SS	Spring 'N Stop Arm
SC70-3049SS	Spring 'N Stop Hold-Open Arm
SC70-18	Narrow Frame Back Plate
SC70-18PA	Narrow Top Rail Drop Plate
SC70-30	Cush Shoe Support
SC70-61	Blade Stop Spacer
SC70-62A	Offset Auxiliary Shoe

\$241	12
263	12
20	1
70	3
95	3
95	3
115	5
140	5
185	5
219	5
46	3
46	4
18	1
20	1
15	1



SC70-18
SC70-18PA

SC70-18
SC70-18PA

SC70-18PA

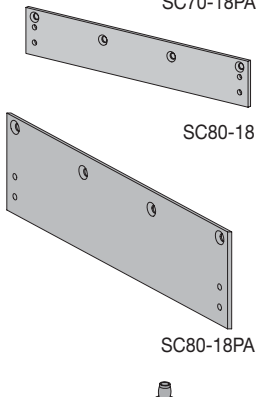
SC70-18PA

SC70-18PA

SC80 Series

SC81-3071	Cylinder
SC81-3071DEL	Delay Cylinder
SC80-72	Slim Cover
SC80-72FC	Full Cover
SC80-3077/PA	Regular Arm w/PA Bracket
SC80-3049/PA	HO Arm w/PA Bracket
SC80-3077HD	Heavy Duty Parallel Arm
SC80-3077DS	Dead Stop Parallel Arm
SC80-3049DS	HO Dead Stop Parallel Arm
SC80-3077SS	Spring 'N Stop Arm
SC80-3049SS	Spring 'N Stop Hold-Open Arm
SC80-18	Mounting Plate - Top Jamb
SC80-18PA	Mounting Plate - Push Side
SC80-30	Cush Shoe Support
SC80-61	Blade Stop Spacer
SC80-62A	Offset Auxiliary Shoe

\$178	10
200	10
15	1
20	1
70	3
95	3
95	3
115	5
140	5
185	5
219	5
27	2
27	2
18	1
20	1
15	1



SC70-18PA

SC80-18

SC80-18PA

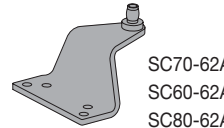
SC80-18PA

SC80-18PA

SC90 Series

SC91-3071	Cylinder
SC90-72	Slim Cover
SC90-3077/PA	Regular Arm w/PA Bracket
SC90-3049/PA	HO Arm w/PA Bracket
SC90-18	Mounting Plate - Top Jamb
SC90-18PA	Mounting Plate - Push Side

\$65	6
10	1
70	3
95	3
27	2
27	2




SC70-62A
SC60-62A
SC80-62A

NOTE - SC Series parts may be available in a BRASS (696) finish but at an extended lead time (consult factory).

Prices subject to change without notice

**OHC100 SERIES
PRICE LIST**

CLOSER SERIES NUMBER		STANDARD FINISH	S H E E T P R I N T	 January 2011
SERIES NUMBER	ARM TYPE			

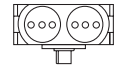
ALL PRICES IN U.S. DOLLARS

NEW
Adjustable
1-3
Grade 1

OHC100 Series - Overhead Concealed (90° - w/o Hold Open)
 OHC100 or OHC101 (SO90).....EL-DP
 OHC100 or OHC101 (SO90).....VO*
 OHC100 or OHC101 (SO90).....SL/GE

\$203
203
203

16
16
16

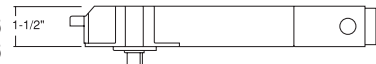


NEW
Adjustable
3-5

OHC100 Series - Overhead Concealed (90° - w/ Hold Open)
 OHC100 or OHC101 (HO90).....EL-DP
 OHC100 or OHC101 (HO90).....VO*
 OHC100 or OHC101 (HO90).....SL/GE

\$203
203
203

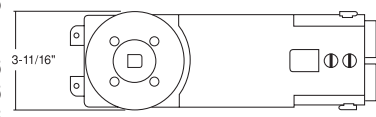
16
16
16



OHC100 Series - Overhead Concealed (105° - w/o Hold Open)
 OHC100 or OHC101 (S105).....EL-DP
 OHC100 or OHC101 (S105).....VO*
 OHC100 or OHC101 (S105).....SL/GE

\$203
203
203

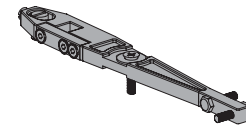
16
16
16



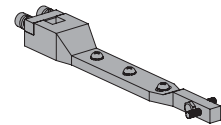
OHC100 Series - Overhead Concealed (105° - w/ Hold Open)
 OHC100 or OHC101 (H105).....EL-DP
 OHC100 or OHC101 (H105).....VO*
 OHC100 or OHC101 (H105).....SL/GE

\$203
203
203

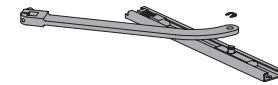
16
16
16



"S"



"A"



"VO"

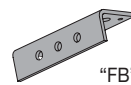
OHC100 Closers are Grade 1 and adjustable size 3 to 5.
 OHC101 Closers are Grade 1 and adjustable size 1 to 3.
 OHC100 Series Closers utilize a 'Hold-Open' feature within the cylinder assembly.
 *VO Style offset arm and track available in (AL) (689) or (DKBRZ) (695)

PARTS & COMPONENTS

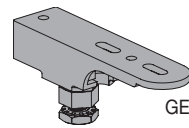
OHC100 Series
 OHC100 or OHC101-S090Standard 90° Cylinder
 OHC100 or OHC101-H090Hold Open 90° Cylinder
 OHC100 or OHC101-S105Standard 105° Cylinder
 OHC100 or OHC101-H105Hold Open 105° Cylinder
 OHC100-FBMounting Bracket & Hardware
 OHC100-EL "A" Style End Load
 OHC100-SL "S" Style Side Load Arm
 OHC100-VO "VO" Style Offset Arm & Track
 OHC100-GECenter Hung Floor Pivot
 OHC100-DPCenter Hung Floor Pivot

\$178
178
178
178
13
44
30
44
24
24

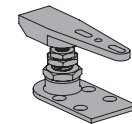
12
12
12
12
1
2
2
4
2
2



"FB"



GE Pivot




DP Pivot

OHC100 Series Closers utilize a 'Hold-Open' feature within the cylinder assembly.
 *VO Style offset arm and track available in (AL) (689) or (DKBRZ) (695)

Prices subject to change without notice

**8200 SERIES AUTOMATIC OPERATOR
PRICE LIST**

CLOSER SERIES NUMBER		FINISH AL (689)	S H E I P P I N G	 January 2011
SERIES NUMBER	ARM TYPE			
ALL PRICES IN U.S. DOLLARS				

FALCON OPERATORS

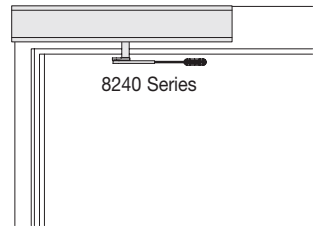
8230 Series – Falcon

8231.....STD (Pull) **\$1,975**
Ships with standard 26" length header.
For parts and accessories, see below.



8240 Series – Falcon

8242.....REG (Push) **1,975**
Ships with standard 26" length header.
For parts and accessories, see below.



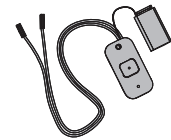
8310 Series Actuators & Accessories

6" Round – Text w/ Logo

8310-852T..... Push Plate, Wall Mount **\$199**
8310-869F.....Mounting Box, Flush **121**
8310-869S.....Mounting Box, Surface **121**
8310-802..... Weather Ring **17**



8310-852T



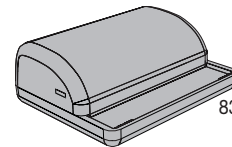
8310-844

1 1/2" x 4 3/4" Jamb – Text w/ Logo

8310-818T..... Push Plate, Jamb Mount **\$129**
8310-819F.....Mounting Box, Flush **29**
8310-819S.....Mounting Box, Surface **29**



8310-818T



8310-865

Wireless Transmitters & Receiver

8310-844..... Transmitter, Wall Mount **\$148**
8310-844J..... Transmitter, Jamb Mount **148**
8310-861Transmitter, Handheld **148**
8310-865..... Receiver **155**

NOTE - Additional actuators and accessories are available through LCN - please see the LCN Price List.

8200 Parts List

8230 Series

8230-3077TStandard Arm **\$175**
8230-3077PLCMStandard Arm w/Track **225**
8230-3038Track **60**
8230-72MCMetal Cover **350**
8230-MSScrew Pack **20**
8230-3018Mounting Bracket **230**
8230-3034Track Roller **15**
8230-3155Label Kit **19**
8230-3454Motor Gearbox Assembly **1,596**
8230-3462Control Box **999**
8230-3498-2AA/C Power Cable **35**

8240 Series

8240-3077Regular Arm **\$150**
8240-72MCMetal Cover **350**
8240-MSScrew Pack **20**
8240-3018.....Mounting Bracket **230**
8240-79Rod **40**
8240-77Main Arm **125**
8240-3155Label Kit **19**
8240-3454Motor Gearbox Assembly **1,596**
8240-3462Control Box **999**
8240-3498-2AA/C Power Cable **35**

Prices subject to change without notice

WARRANTY

Falcon warrants its products manufactured to be free from defects in materials and workmanship for a period of ten (10) years from the date of manufacturer, except for the OHC100 products, which have a five (5) year limited warranty (see Table below for warranty periods).

PRODUCTS	YEARS
SC60, SC70, SC80 AND SC90 SURFACE CLOSERS	10 YEARS
OHC100 CONCEALED CLOSERS	5 YEARS
8230/8240 SERIES OPERATORS	1 YEAR

This limited warranty does not cover products that (i) are not the proper size for the application; (ii) are not installed in accordance with Falcon published installation instructions; (iii) are installed with improper or incorrect parts [Note: It is recommended that the products be installed with the Falcon fasteners provided with the product.]; (iv) have been, in the opinion of Falcon, modified, repaired, or altered in any way without the express written consent of Falcon; (v) are used for purposes which they are not designed or intended; or (vi) are subjected to misuse, abuse, negligence, or accident. The following costs and expenses are not covered by the provisions of this limited warranty: (i) labor costs for the removal and reinstallation of products; (ii) shipping and freight expenses required to return products to Falcon; (iii) normal maintenance; and (iv) economic losses.

Falcon will replace the products which, in the opinion of Falcon, are found to be defective, provided said products are returned to Falcon, Warranty and Replacement Department, 121 West Railroad Avenue, P.O. Box 100, Princeton, Illinois USA 61356-0100.

FALCON SHALL IN NO EVENT BE LIABLE FOR ANY INCIDENTAL, CONSEQUENTIAL, INDIRECT, SPECIAL, OR PUNITIVE DAMAGES FOR ANY CLAIM WHETHER BASED ON CONTRACT, WARRANTY, TORT (INCLUDING, BUT NOT LIMITED TO, STRICT LIABILITY OR NEGLIGENCE), PATENT INFRINGEMENT, OR OTHERWISE, EVEN IF ADVISED OF THE POSSIBILITY OF SUCH DAMAGES.

This limited warranty is in place of all other warranties, expressed or implied, and excludes any warranties of fitness for a particular purpose or merchantability. No agent, representative, dealer, or employee of Falcon has the authority to increase or alter the obligations of this limited warranty.

Note: Should the Product be considered a "consumer product" as may be covered by the Magnuson-Moss Federal Warranty Act, please be advised that: (1) Some states do not allow limitations on incidental or consequential damages or how long an implied warranty lasts, so that the above limitations may not fully apply; and (2) This warranty gives specific legal rights and a user may have other rights which may vary from state to state.

FALCON

121 West Railroad Avenue
Princeton, IL 61356



Ingersoll Rand's Security Technologies Sector is a leading global provider of products and services that make environments safe, secure and productive. The sector's market-leading products include electronic and biometric access-control systems; time-and-attendance and personnel scheduling systems; mechanical locks; portable security; door closers, exit devices, architectural hardware, and steel doors and frames; and other technologies and services for global security markets.

877-671-7011

www.falcon.ingersollrand.com www.ingersollrand.com