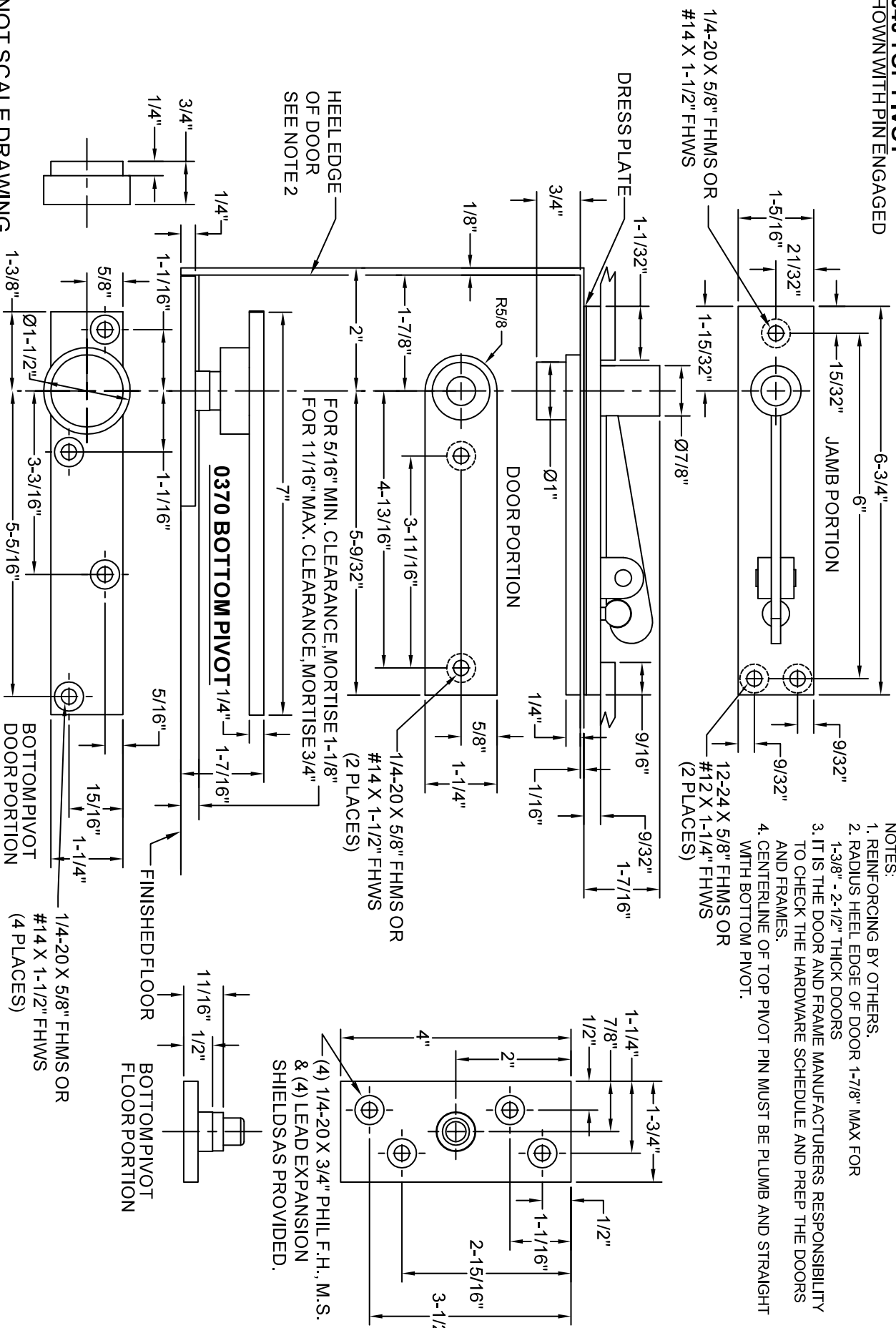


0370 CENTER HUNG PIVOT SET TEMPLATE

0340 TOP PIVOT
SHOWN WITH PIN ENGAGED

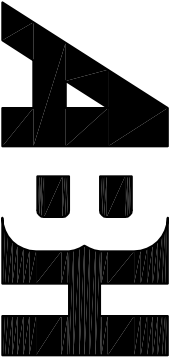


- NOTES:
1. REINFORCING BY OTHERS.
 2. RADIUS HEEL EDGE OF DOOR 1-7/8" MAX FOR 1-3/8" - 2-1/2" THICK DOORS
 3. IT IS THE DOOR AND FRAME MANUFACTURERS RESPONSIBILITY TO CHECK THE DOOR AND FRAME SCHEDULE AND PREP THE DOORS AND FRAMES.
 4. CENTERLINE OF TOP PIVOT PIN MUST BE PLUMB AND STRAIGHT WITH BOTTOM PIVOT.

FOR 5/16" MIN. CLEARANCE MORTISE 1-1/8"
FOR 11/16" MAX. CLEARANCE MORTISE 3/4"

(4) 1/4-20 X 3/4" PHIL F.H., M.S.
& (4) LEAD EXPANSION
SHIELDS AS PROVIDED.

DO NOT SCALE DRAWING



www.abhmf.com

E-mail: abhinfo@abhmf.com

Architectural Builders Hardware Mfg., Inc.

1222 Ardmore Ave., Itasca, IL 60143

630.875.9900, FAX 800.9FAXABH (932.9224)

© 2009 ABH Mfg., Inc.
printed in USA

0370

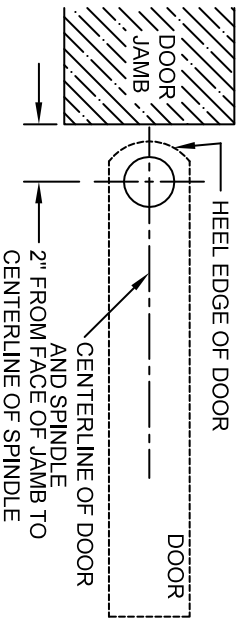
REVISED 06-04-09

0370-1-04.DWG

0370 CENTER HUNG PIVOT SET INSTALLATION INSTRUCTIONS

1. LOCATE PIVOT

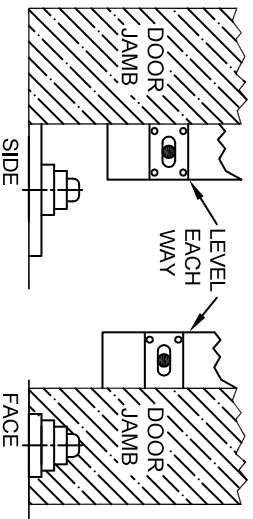
- A. MEASURE 2" OUT FROM DOOR JAMB ON CENTERLINE OF DOOR. THIS IS THE LOCATION OF SPINDLE CENTER.
- B. ROUND HEEL EDGE AND PREPARE DOOR FOR 1/8" MIN. CLEARANCE THRU ENTIRE OPENING.



2. INSTALL PIVOT SET

NOTE: BOTTOM PIVOT MUST BE LEVEL. USE LEVEL PER ILLUSTRATION.

- 0370 BOTTOM PIVOT FLOOR PORTION:
- A. LOCATE FLOOR PORTION.
- B. ANCHOR PORTION SECURELY TO FLOOR.



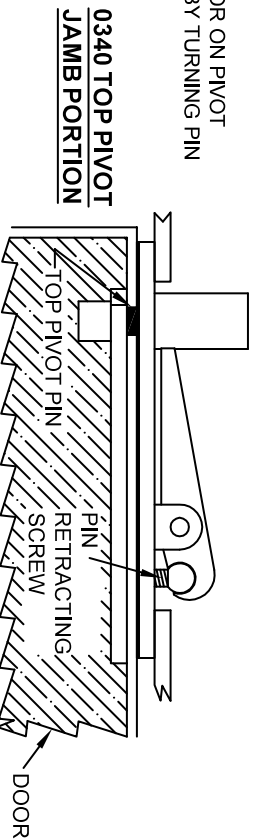
3. INSTALL TOP PIVOT AND PIVOT ARM

- A. INSTALL DOOR PORTION OF PIVOT PER TEMPLATE.
- B. INSTALL JAMB PORTION OF TOP PIVOT IN FRAME PER TEMPLATE.
- C. CENTERLINE OF PIVOT SHOULD ALIGN WITH CENTERLINE OF BOTTOM SPINDLE. USE A PLUMB LINE TO ASSURE ACCURACY.
- D. MORTISE BOTTOM OF DOOR TO RECEIVE ARM (MORTISE VARIES WITH REQUIRED CLEARANCE REFER TO TEMPLATE.)

SEE
FIGURE 1

4. HANG DOOR

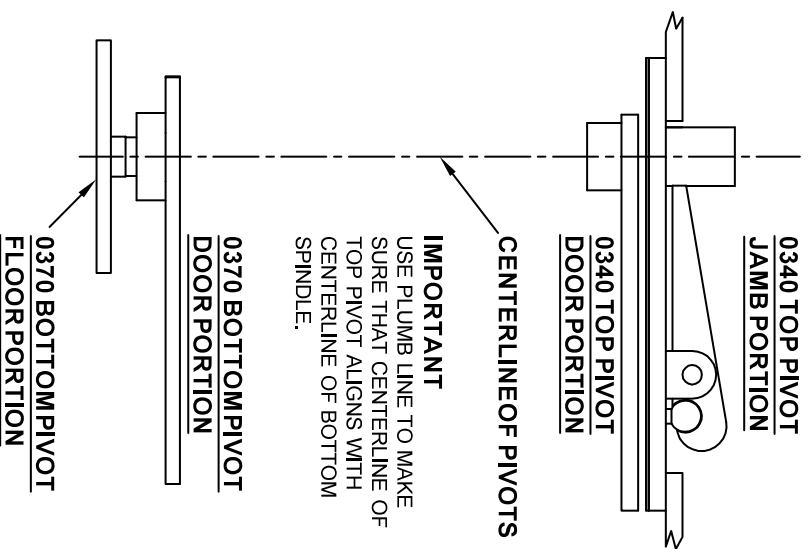
SET BOTTOM PIVOT ARM INSTALLED IN DOOR ON PIVOT SPINDLE AND ENGAGE THE TOP PIVOT PIN BY TURNING PIN RETRACTING SCREW CLOCKWISE.



5. DISMOUNT DOOR (IF REQUIRED)

OPEN THE DOOR ENOUGH TO DISENGAGE THE TOP PIVOT. ROTATE THE DOOR TO CLOSED POSITION AND WITH THE TOP OF THE DOOR LEANING TOWARD YOU, LIFT THE DOOR CLEAR OF THE SPINDLE.

FIGURE 1



www.abhmf.com

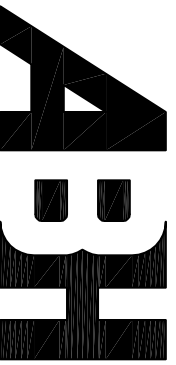
E-mail: abhinfo@abhmf.com

Architectural Builders Hardware Mfg., Inc.

1222 Ardmore Ave., Itasca, IL 60143

630.875.9900, FAX 800.9FAXABH (932.9224)

© 2009 ABH Mfg., Inc.
printed in USA



0370

REVISED 06-04-09

0370-2-04.DWG